

O.D.O.T. DISTRICT 2 SURVEY OFFICE (USE ONLY)

PERSONNEL

REFERENCE NO. 33

SHEET 35 OF 48

NOTES VAN DUSEN

DATE 6/4/01

ROUTE SR 18

H.C. ROUSOS

WEATHER SUNNY

COUNTY SENECA

R.C. BROWN

TEMP. 60°

TOWNSHIP HOPEWELL

DWG BY NIESE

PID NO PID

SECTION 17

T 2 N R 14 E

TYPE MONUMENT P.K./WASHER

ON SURFACE - ~~BELOW~~ ON

OFFSET \varnothing PAVEMENT 1.0' LT : RT

9.5' TO LT EDGE PAVEMENT

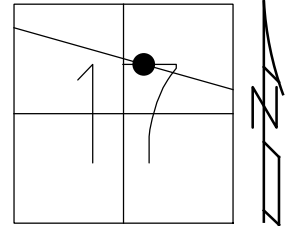
STATION: 467+23

HORZ.DATUM: NAD83(2011)

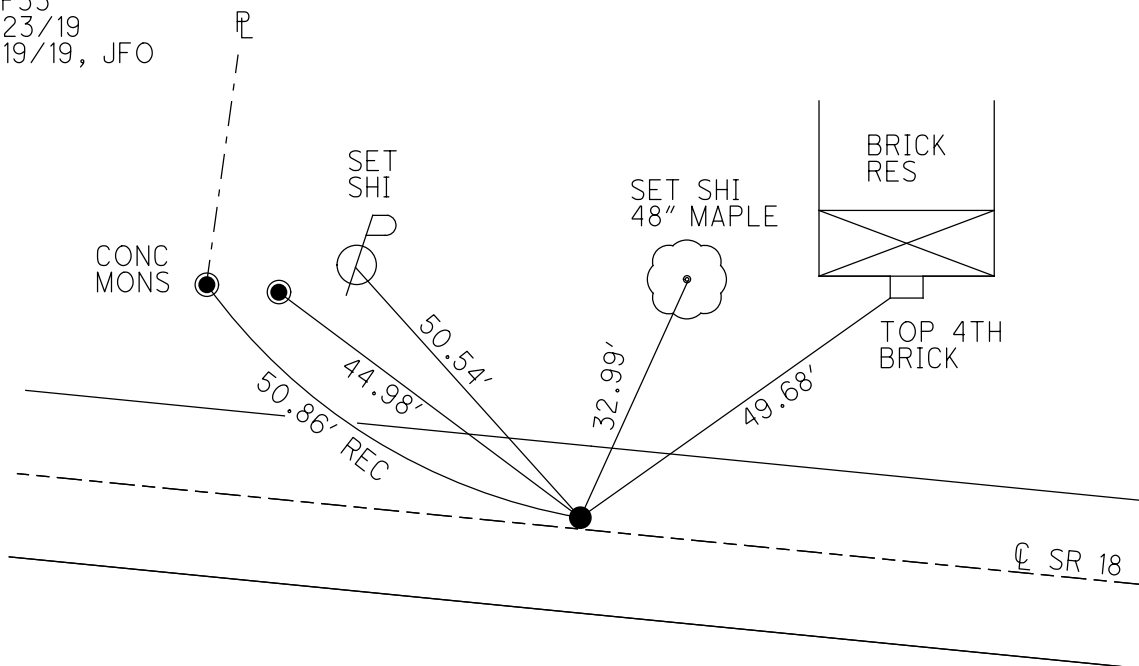
GEOID: 2012A

GRID: NORTHING: 534804.034

EASTING: 1755720.557



RECORD: P.I.
 STA. 454+66.89
 $\Delta = 0^\circ 42' 00''$ LT
 PREV MONUMENTS:
 P.K./WASHER
 R.R.SPIKE
 FD P.K./WASHER
 6/4/01, BVD
 SET P.K./WASHER
 8/1/01, SAH
 FD P.K./WASHER
 REF33
 4/23/19
 8/19/19, JFO



O.D.O.T. DISTRICT 2 SURVEY OFFICE

PERSONNEL

REFERENCE NO. 33

SHEET 14 OF 26

NOTES Vandugra

H.C. Rousor

R.C. Brown

DATE 6-4-01

WEATHER Sunny

TEMP. 60°F.

ROUTE 18

COUNTY Seneca

TOWNSHIP Hopwell

SECTION 17

T 2 N R 14 E

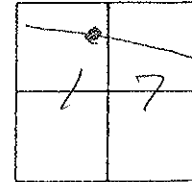
TYPE MONUMENT PK/W

~~ON SURFACE~~ ~~BELOW~~ Surface

~~LEFT - & PAV'T.~~ ~~RIGHT~~ 1'.0

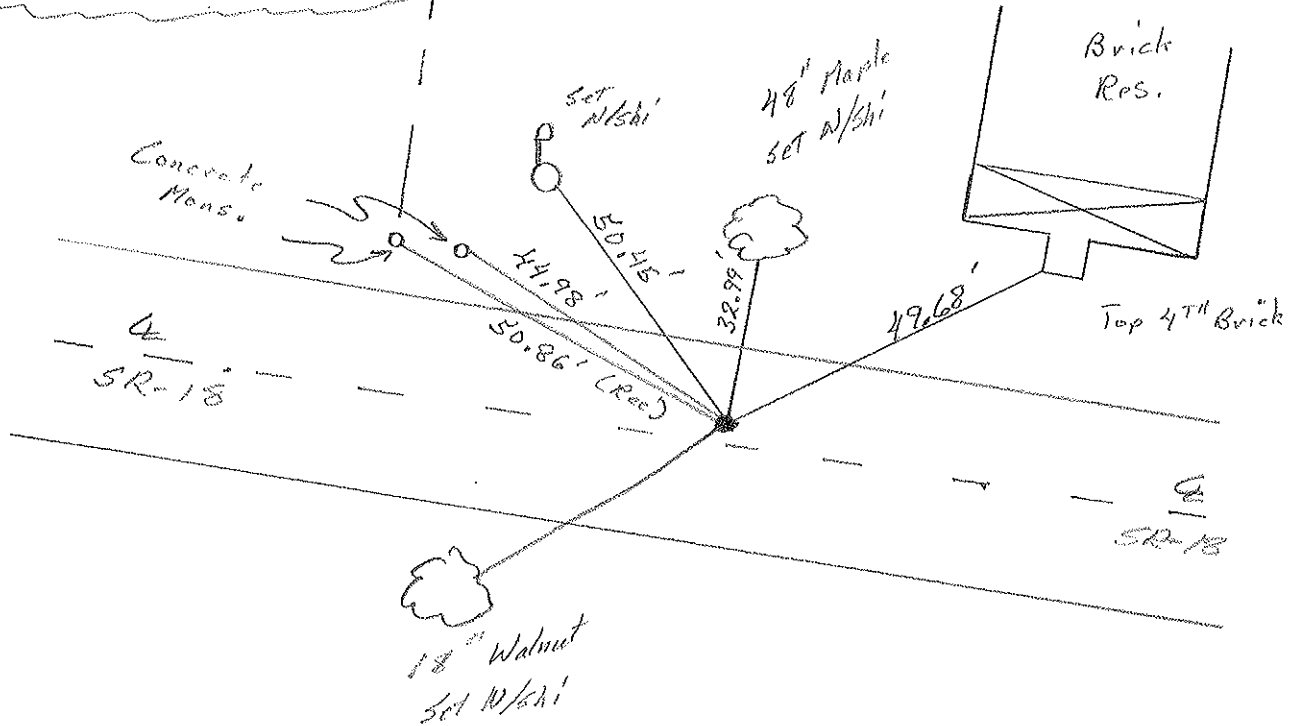
9.5' TO N₁ EDGE PAVEMENT

S.L.M. 467123



Record:
Plan Sta. 454+66.89
Prev. Mons. - PK/W, Respt.

(Sta PK/W
8-1-01
SAM)



O.D.O.T. DISTRICT 2 SURVEY OFFICE

PERSONNEL

REFERENCE NO. 33

SHEET 14 OF 27

NOTES CHENEY

H.C. RIPPLE

DATE 11-5-1991

ROUTE 18

R.C. BARBOUR

WEATHER PARTLY CLOUDY

COUNTY SENECA

GEYMAN

TEMP. 25°

TOWNSHIP HOPEWELL

SECTION 17

T2N R14E

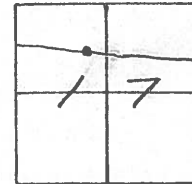
TYPE MONUMENT SET PK/WASHER

ON SURFACE - ~~BELOW~~ _____

LEFT- & PAV'T. - RIGHT 1'

2.5 TO N. EDGE PAVEMENT

S.L.M. 466+94

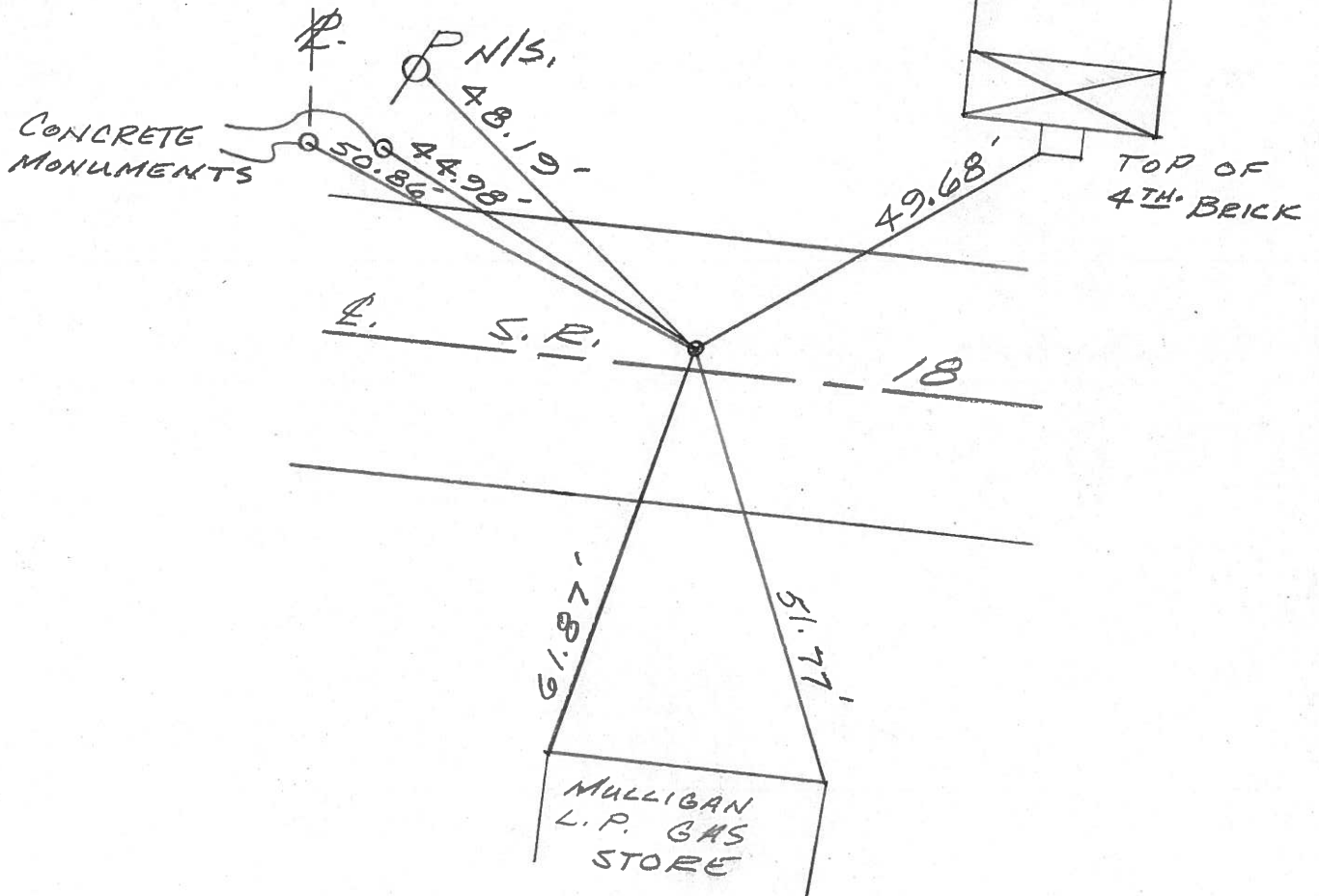


PREVIOUS MONUMENTS:

P.K./SHINER

R.R. SPK.

PLAN STA = 454+66.89



ODOT. DISTRICT 2 SURVEY OFFICE

Sht. of

County Seneca S.R. # 18°

Township Hopewell

Section 17

T 2 N, R 14 E

Personnel Schneider

Mosser

Barbour

Cronin

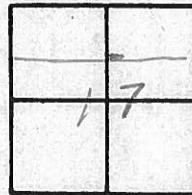
Ripple Gayman

Date 5-16-80

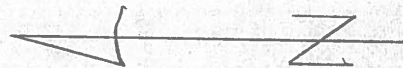
OK 9-12-80 G.W.S.

Weather Fair

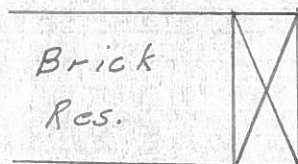
Temp. 60°



33



S.R. # 18



Brick Res.

top 2nd. brick

46.97'

0.6 down from siding

51.77' Plumbed

Mulligan L.P. Gas

store

61.87'

44.99'

Conc. Mon.

P. I.

454 + 66.89

R. R. SPK.

SET P.K & SHI.

PERSONNEL	TITLE	PERSONNEL	TITLE	COUNTY	Seneca	DATE	10-21-68
Schnéider		Potts		S. R.	18	WEATHER	Cloudy
Mosser				SEC.	Bascom to Tiffin	TEMP.	50°
Barbour							
Redding							

DESCRIPTION Ties for Control Points JOB NO. _____

