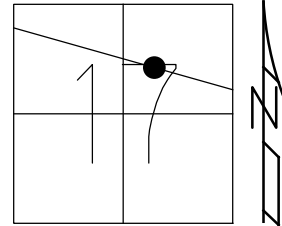


O.D.O.T. DISTRICT 2 SURVEY OFFICE (USE ONLY)

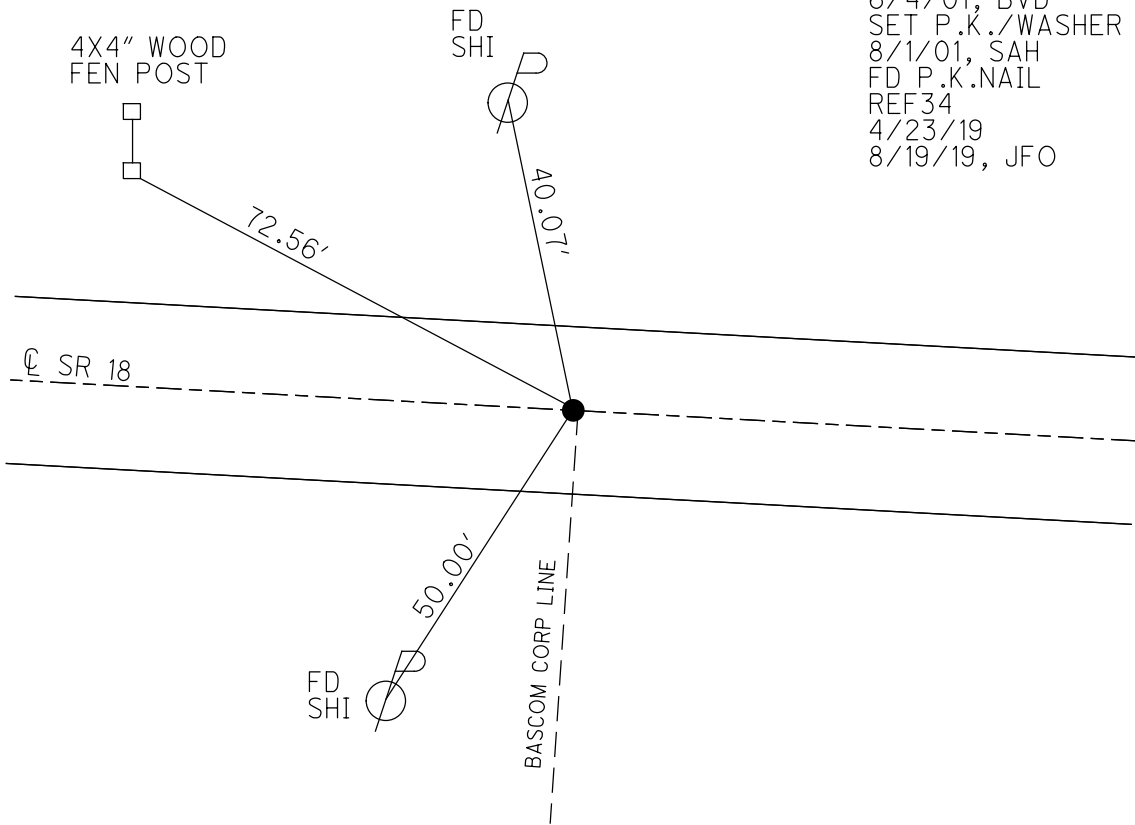
PERSONNEL \_\_\_\_\_ REFERENCE NO. 34 SHEET 36 OF 48  
 NOTES VAN DUSEN DATE 6/4/01 ROUTE SR 18  
 H.C. ROUSOS WEATHER SUNNY COUNTY SENECA  
 R.C. BROWN TEMP. 60° TOWNSHIP HOPEWELL  
 SECTION 17  
 DWG BY NIESE PID NO PID T 2 N R 14 E

TYPE MONUMENT P.K./WASHER  
 ON SURFACE - ~~BELOW~~ ON \_\_\_\_\_  
 OFFSET  $\text{C}$  PAVEMENT 0.5' LT : ~~RT~~  
10.5' TO LT EDGE PAVEMENT  
 STATION: 471+38



HORZ.DATUM: NAD83(2011) GEOID: 2012A  
 GRID: NORTHING: 534760.742 EASTING: 1756133.195

RECORD:  
 PREV MONUMENTS:  
 P.K./SHINER  
 R.R.SPIKE  
 FD P.K./WASHER  
 6/4/01, BVD  
 SET P.K./WASHER  
 8/1/01, SAH  
 FD P.K.NAIL  
 REF34  
 4/23/19  
 8/19/19, JFO





O.D.O.T. DISTRICT 2 SURVEY OFFICE

PERSONNEL

REFERENCE NO. 34

SHEET 15 OF 27

NOTES CHENEY

H.C. RIPPLE

R.C. BARBOUR

GEYMAN

DATE 11-5-1991

WEATHER PARTLY CLOUDY

TEMP. 25°

ROUTE 18

COUNTY SENECA

TOWNSHIP HOPEWELL

SECTION 17

T. 2 N R. 14 E

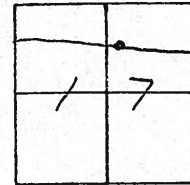
TYPE MONUMENT SET PK/WASHER

ON SURFACE - BELOW

LEFT - & PAW'T. - RIGHT 0.5'

10.5' TO N. EDGE PAVEMENT

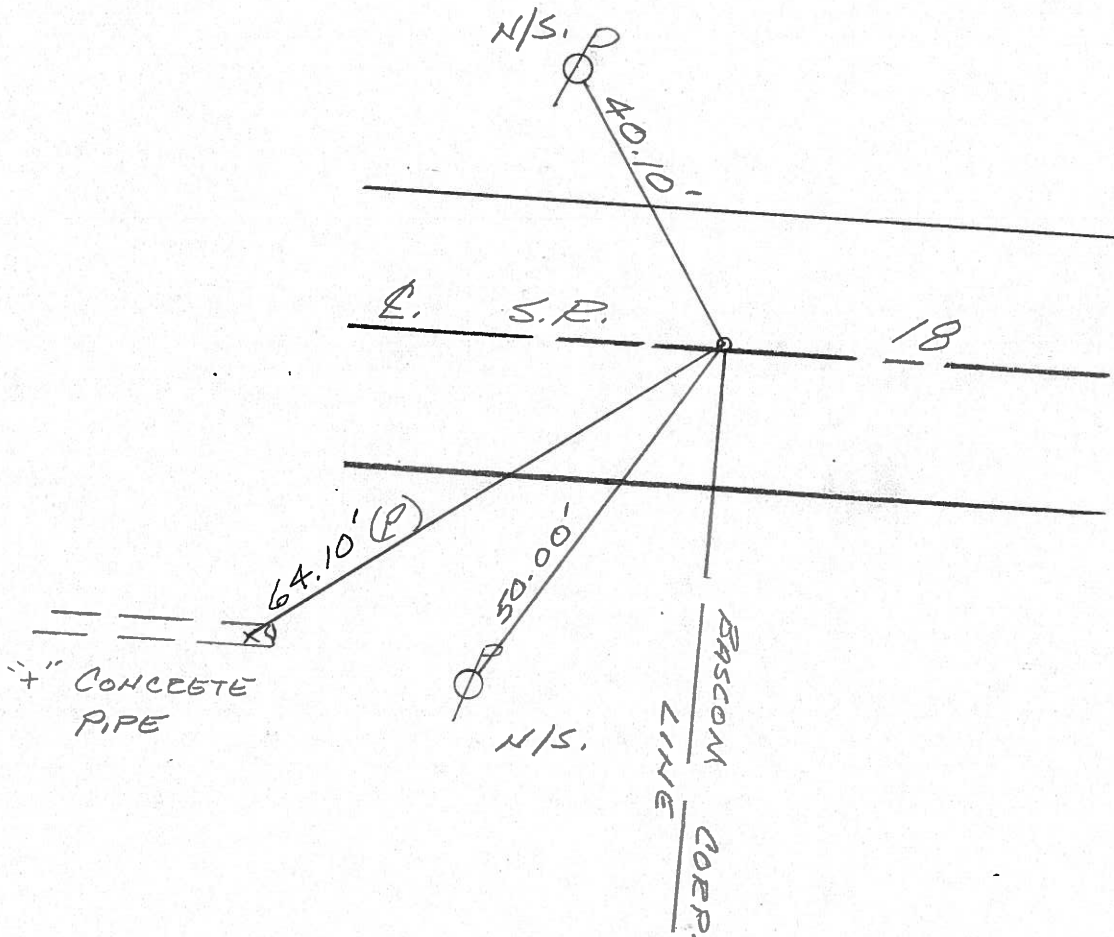
S.L.M. 471+10



PREVIOUS MONUMENTS:

P.K./SHINER

E.F. SPK.



County Seneca S.R. # 18

Township Hopewell

Section 17

T2N, R14E

Personnel Schneider

Mosser

Barbour

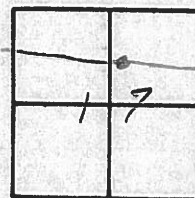
Gronin

Ripple Geyman

Date 5-19-80 OK-9-12-80 G.W.S.

Weather Cloudy

Temp. 58°



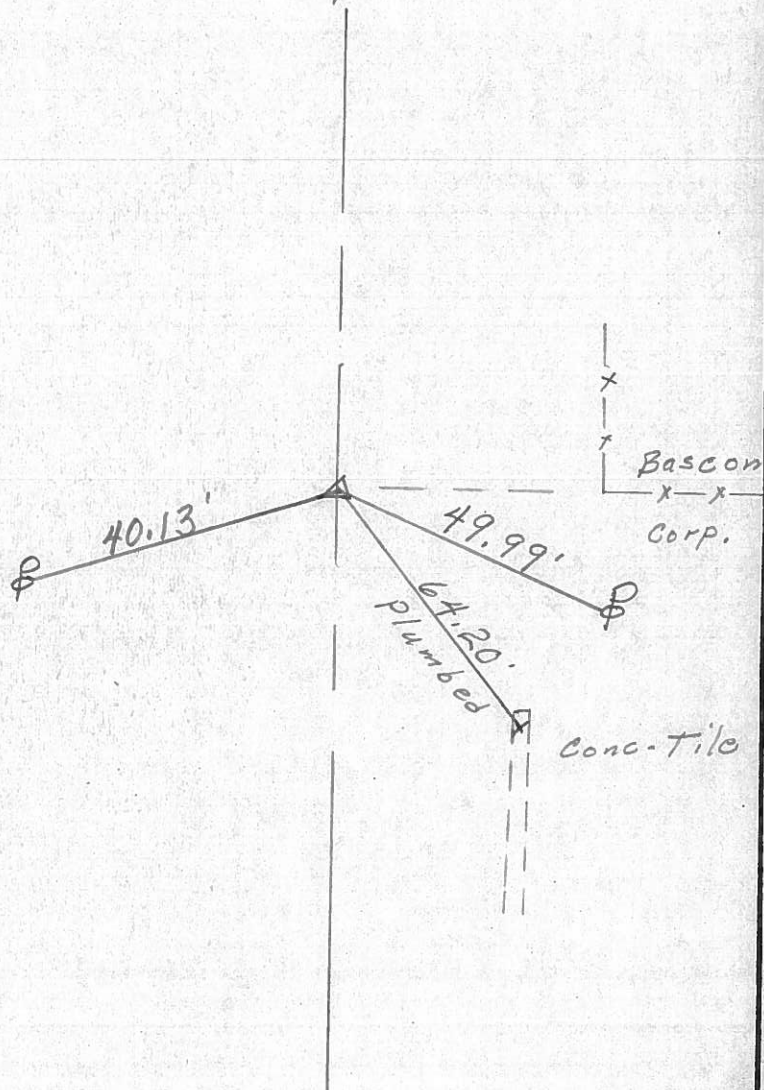
34



SR. # 18

R.R. SPK.

SET P.K. & SHI.





PERSONNEL TITLE PERSONNEL TITLE COUNTY Seneca DATE 10-24-68  
 Schneider \_\_\_\_\_ Potts \_\_\_\_\_  
 Mosser \_\_\_\_\_ S. R. 1.8 WEATHER Cloudy-Rain  
 Barbour \_\_\_\_\_  
 Redding \_\_\_\_\_ SEC. Bascom to Tiffin TEMP. 50°  
 DESCRIPTION Ties for Control Points JOB NO. \_\_\_\_\_

