

O.D.O.T. DISTRICT 2 SURVEY OFFICE (USE ONLY)

PERSONNEL _____ REFERENCE NO. 36 SHEET 38 OF 48
 NOTES VAN DUSEN DATE 6/4/01 ROUTE SR 18
 H.C. ROUSOS WEATHER SUNNY COUNTY SENECA
 R.C. BROWN TEMP. 60° TOWNSHIP HOPEWELL
 SECTION 17
 DWG BY NIESE PID NO PID T 2 N R 14 E

TYPE MONUMENT 1" IRON PIN

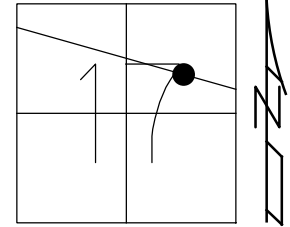
~~ON SURFACE~~ - BELOW ±

OFFSET Q PAVEMENT 36.5' LT : ~~RT~~
25.5' TO LT EDGE PAVEMENT

STATION: 477+88

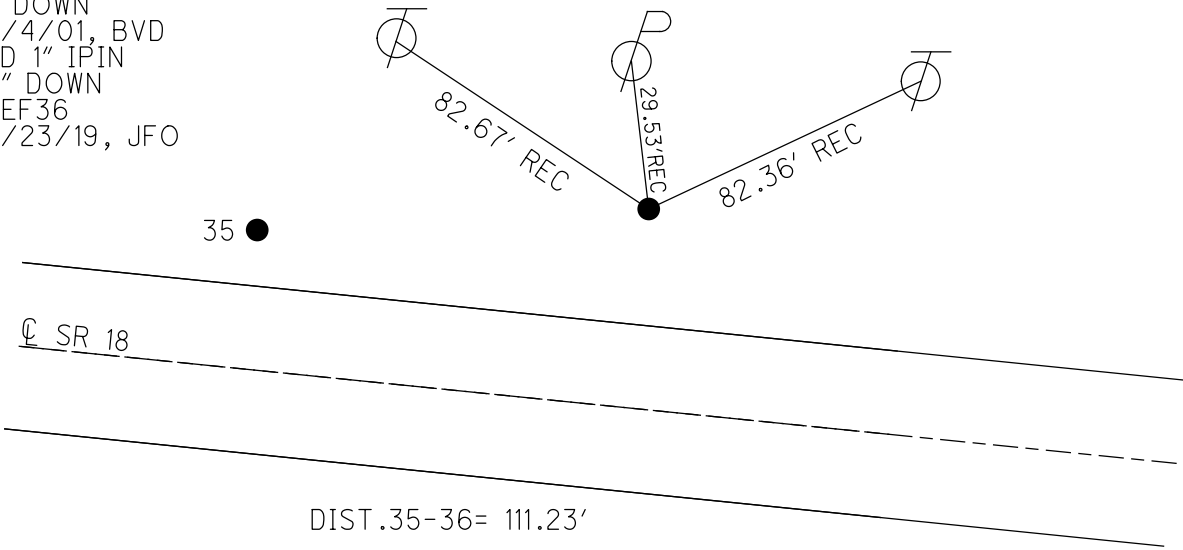
HORZ. DATUM: NAD83(2011) GEOID: 2012A

GRID: NORTHING: 534688.743 EASTING: 1756809.523



RECORD P.I.
 SURVEY
 STA. 465+61.90
 $\Delta = 18^\circ 49' 00''$ RT
 $D = 8^\circ 30' 00''$
 $R = 674.07'$
 $L = 221.37'$
 $T = 111.69'$
 $E = 9.19'$
 FD 1" IPIN
 ± DOWN
 6/4/01, BVD
 FD 1" IPIN
 3" DOWN
 REF36
 4/23/19, JFO

FD
 SHI'S



O.D.O.T. DISTRICT 2 SURVEY OFFICE

PERSONNEL

REFERENCE NO. 35436

SHEET 16 OF 26

NOTES DauDugan

H.C. Rousos

R.C. Brown

DATE 6-4-01

WEATHER Sunny

TEMP. 60°F.

ROUTE 18

COUNTY Seneca

TOWNSHIP Hopewell

SECTION 17

T 2 N R 14 E

TYPE MONUMENT

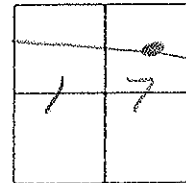
- (A) - Bolt.
- (B) - 1" Iron Pin

ON SURFACE - (BELOW)

LEFT ~~ON PAVT~~ RIGHT (A) = 18.5' (B) 36.5'

^{A = 8.7'}
^{B = 25.5'} TO N. EDGE PAVEMENT

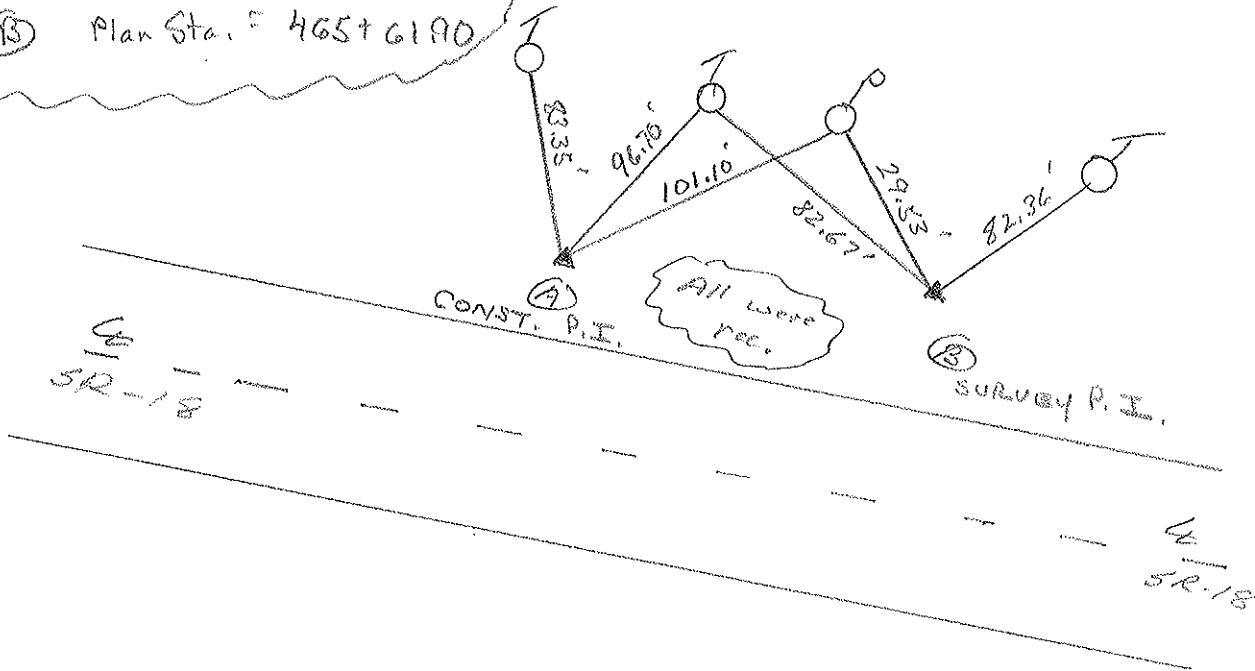
S.L.M. (A) 476179 (B) 477188



Record:

(A) Plan Sta. = 464+50.21

(B) Plan Sta. = 465+61.90



O.D.O.T. DISTRICT 2 SURVEY OFFICE

PERSONNEL

REFERENCE NO. 35+36

SHEET 16 OF 27

NOTES CHENEY

H.C. RIPPLE

DATE 11-5-1991

ROUTE 18

R.C. BARBOUR

WEATHER PARTLY CLOUDY

COUNTY SENECA

GEYMAN

TEMP. 25°

TOWNSHIP HOPWELL

SECTION 17

T2 N R 14 E

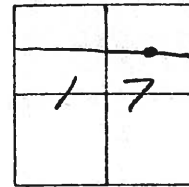
TYPE MONUMENT 1" I. PIN - Q. SURVEY - P.I.
BOLT - Q. CONST. - P.I.

~~ON SURFACE~~ - BELOW

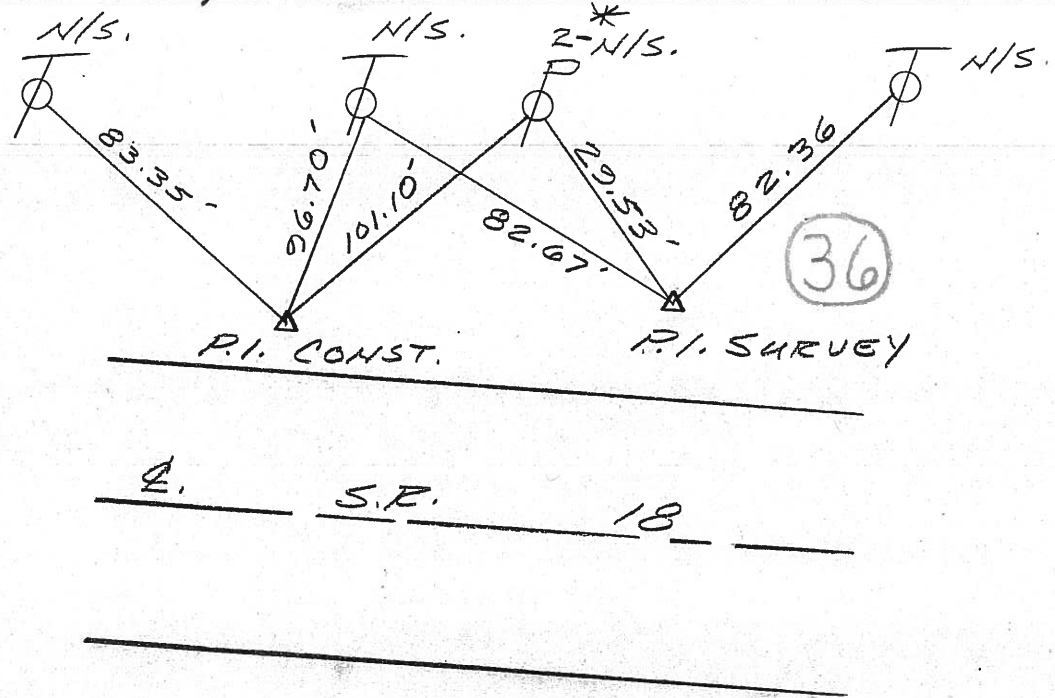
LEFT - Q. PAV'T. - ~~RIGHT~~ 36.5' - SURVEY
28.5' - CONST.

TO N. EDGE PAVEMENT

S.L.M. 477+88 - SURV., 476+79 - CONST.



SURV. - 25.5'
 CONST. - 8.0'



PLAN STA = 464+50.21

PLAN STA 465+61.90

ODOT. DISTRICT 2 SURVEY OFFICE

Sht. ___ of ___

OK-9-12-80-G.W.S.

County Seneca S.R. # 18

Date 5-19-80

Township Hopewell

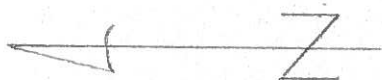
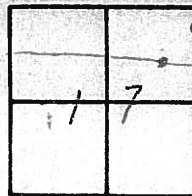
Weather Cloudy

Section 17

Temp. 58°

T2N, R14E

Personnel Schneider
Mosser
Barbour
Cronin
Ripple Geyman

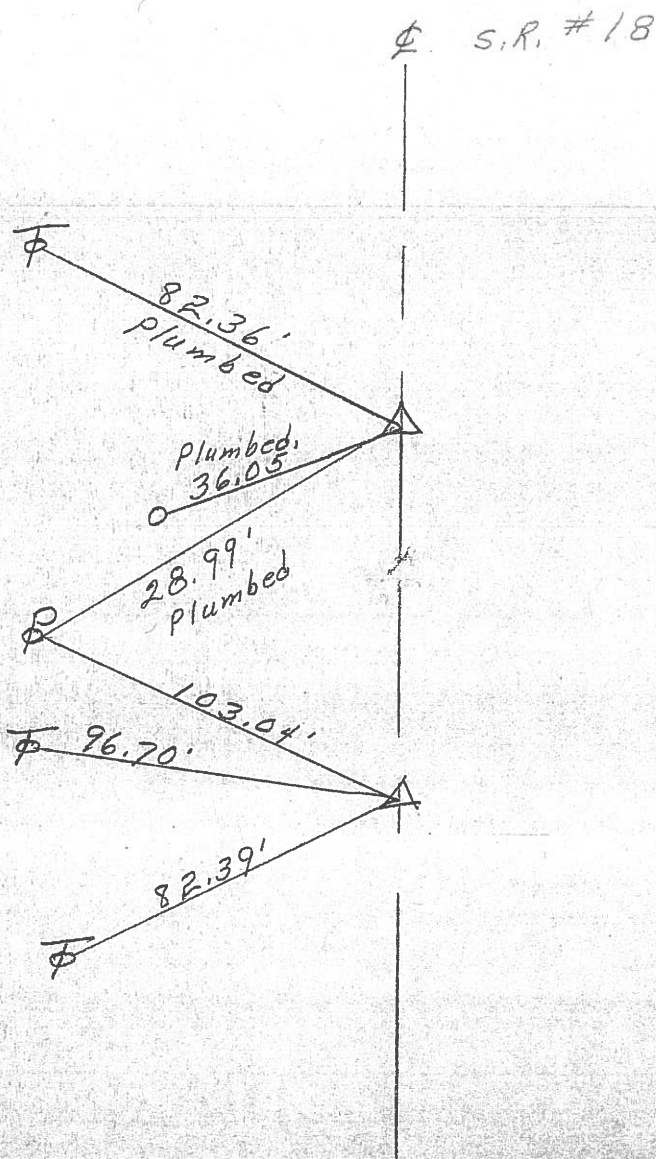


36

OK
P.I. Survey
465 + 61.90
Iron Pin

OK
P.I. Const. -
464 + 50.21
sq. bolt

35



PERSONNEL	TITLE	PERSONNEL	TITLE	COUNTY	DATE	WEATHER	TEMP.
Schneider		Potts		Seneca	10-24-68	Cloudy - Rain	50°
Mosser				S. R. 18			
Barbour				SEC. Bascom to Tiffin			
Redding							

DESCRIPTION Ties for Control Points JOB NO. _____

