

O.D.O.T. DISTRICT 2 SURVEY OFFICE (USE ONLY)

PERSONNEL

REFERENCE NO. 37

SHEET 39 OF 48

NOTES SAVAGE  
 H.C. AUBLE  
 R.C. NIESE

DATE 9/2/21  
 WEATHER SUNNY  
 TEMP. 64°

ROUTE SR 18  
 COUNTY SENECA  
 TOWNSHIP HOPEWELL  
 SECTION 16

DWG BY RHOADES PID PAVTRAIN

T 2 N R 14 E

TYPE MONUMENT P.K.SHANK

~~ON SURFACE~~ - BELOW 1 1/2"

OFFSET  $\text{C}$  PAVEMENT 22.5' ~~LT~~ : RT  
12.0' TO RT EDGE PAVEMENT

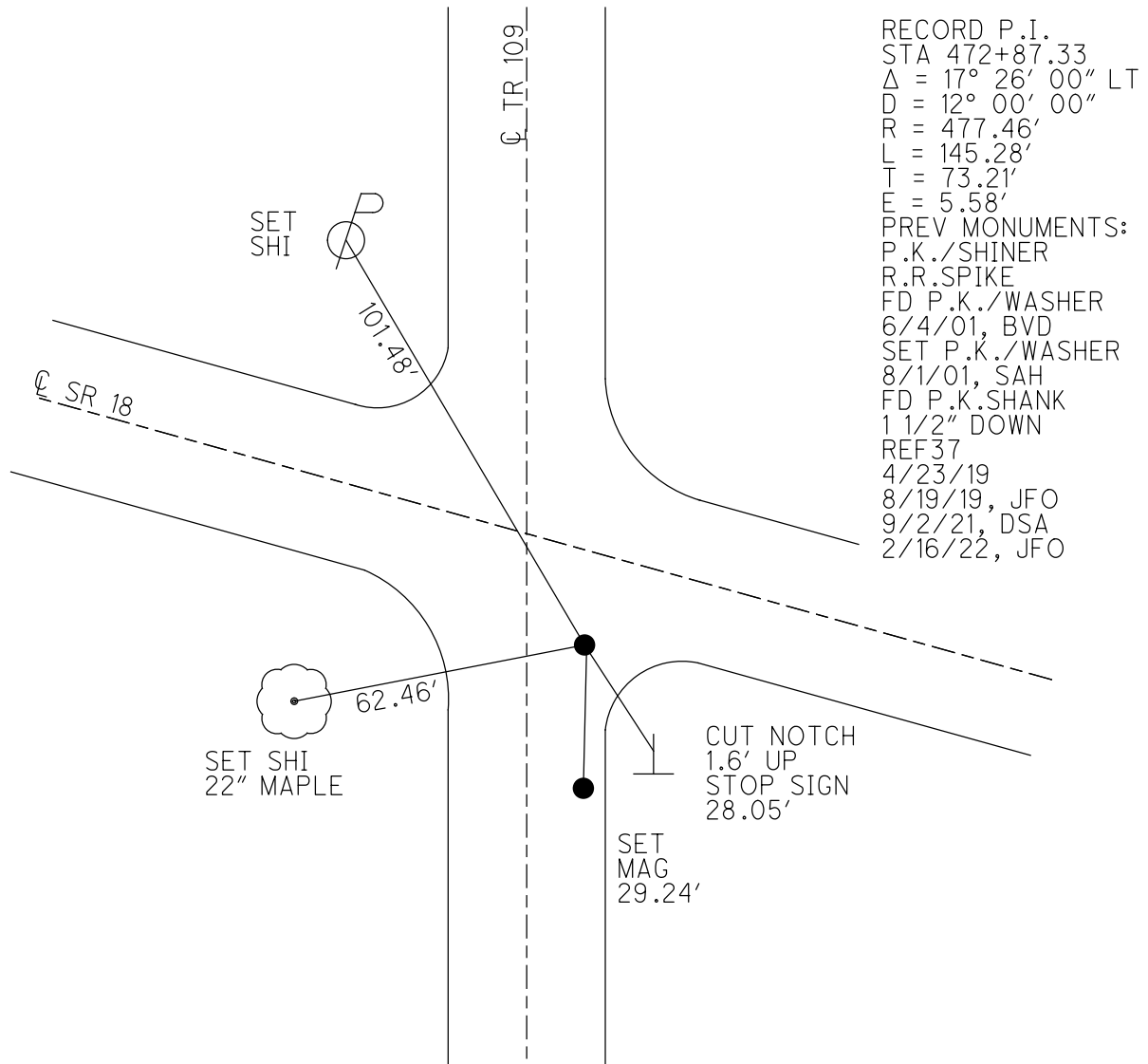
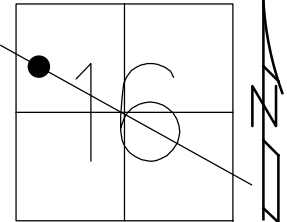
STATION: 485+30

HORZ.DATUM: NAD83(21011)

GEOID: 2012A

GRID: NORTHING: 534382.771

EASTING: 1757469.238



RECORD P.I.  
 STA 472+87.33  
 $\Delta = 17^\circ 26' 00''$  LT  
 $D = 12^\circ 00' 00''$   
 $R = 477.46'$   
 $L = 145.28'$   
 $T = 73.21'$   
 $E = 5.58'$   
 PREV MONUMENTS:  
 P.K./SHINER  
 R.R.SPIKE  
 FD P.K./WASHER  
 6/4/01, BVD  
 SET P.K./WASHER  
 8/1/01, SAH  
 FD P.K.SHANK  
 1 1/2" DOWN  
 REF37  
 4/23/19  
 8/19/19, JFO  
 9/2/21, DSA  
 2/16/22, JFO

O.D.O.T. DISTRICT 2 SURVEY OFFICE (USE ONLY)

PERSONNEL

REFERENCE NO. 37

SHEET 39 OF 48

NOTES VAN DUSEN

DATE 6/4/01

ROUTE SR 18

H.C. ROUSOS

WEATHER SUNNY

COUNTY SENECA

R.C. BROWN

TEMP. 60°

TOWNSHIP HOPEWELL

SECTION 16

DWG BY NIESE PID NO PID

T 2 N R 14 E

TYPE MONUMENT P.K./WASHER

ON SURFACE - ~~BELOW~~ ON

OFFSET 22.5' ~~LT~~ : RT  
12.0' TO RT EDGE PAVEMENT

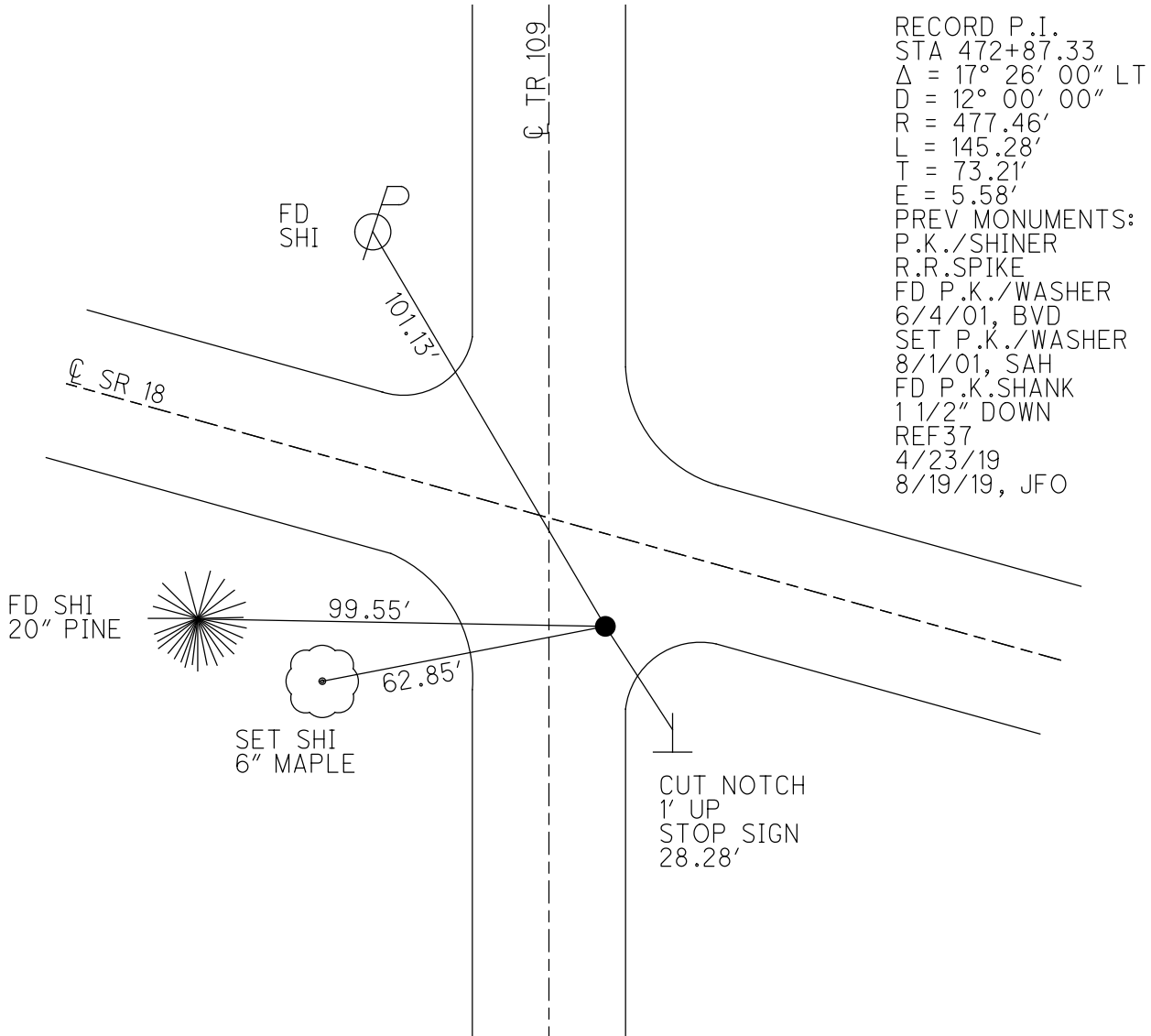
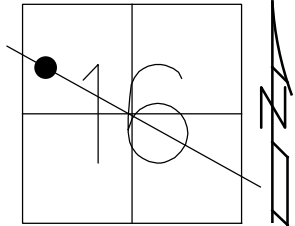
STATION: 485+30

HORIZ.DATUM: NAD83(21011)

GEOID: 2012A

GRID: NORTHING: 534382.771

EASTING: 1757469.238



RECORD P.I.  
 STA 472+87.33  
 $\Delta = 17^\circ 26' 00''$  LT  
 $D = 12^\circ 00' 00''$   
 $R = 477.46'$   
 $L = 145.28'$   
 $T = 73.21'$   
 $E = 5.58'$   
 PREV MONUMENTS:  
 P.K./SHINER  
 R.R.SPIKE  
 FD P.K./WASHER  
 6/4/01, BVD  
 SET P.K./WASHER  
 8/1/01, SAH  
 FD P.K.SHANK  
 1 1/2" DOWN  
 REF37  
 4/23/19  
 8/19/19, JFO

O.D.O.T. DISTRICT 2 SURVEY OFFICE

PERSONNEL

REFERENCE NO. 37

SHEET 17 OF 26

NOTES VAN DUSEN

H.C. ROUSOS

R.C. ADAM B.

DATE 6-4-01

WEATHER SUNNY

TEMP. +60°F

ROUTE 18

COUNTY SENECA

TOWNSHIP HOPEWELL

SECTION 16

T2 N R 14 E

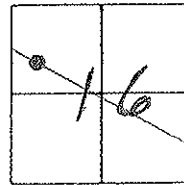
TYPE MONUMENT PK/WASHER

ON SURFACE - BELOW YES

LEFT - CL PAV'T. - RIGHT 22.5

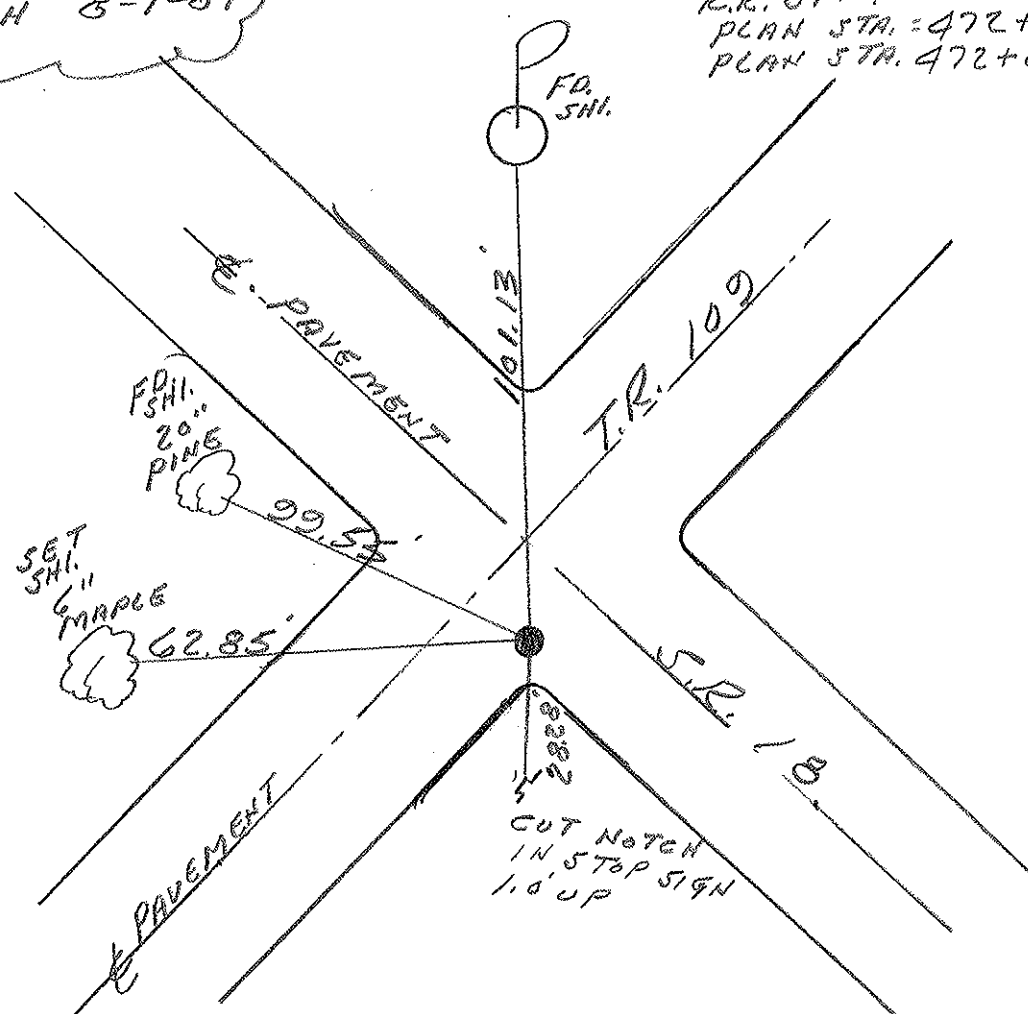
12' TO S. EDGE PAVEMENT

S.L.M. 485+30



SET PK/WASHER  
SAH 8-1-01

PREVIOUS MONUMENTS:  
P.K. / SHINER  
R.R. SPK.  
PLAN STA. = 472+87.33  
PLAN STA. 472+66.22



O.D.O.T. DISTRICT 2 SURVEY OFFICE

PERSONNEL

REFERENCE NO. 37

SHEET 17 OF 27

NOTES CHENEY

H.C. RIPPLE

DATE 11-5-1991

ROUTE 18

R.C. BARBOUR

WEATHER BTLY CLOUDY

COUNTY SENECA

GEYMAN

TEMP. 30°

TOWNSHIP HOPEWELL

SECTION 10

T2 N R 14 E

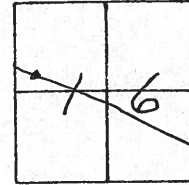
TYPE MONUMENT SET PK/WASHER

ON SURFACE - BELOW

~~LEFT~~ - ℄ PAV'T. - RIGHT 22.5'

12' TO S. EDGE PAVEMENT

S.L.M. 485+08



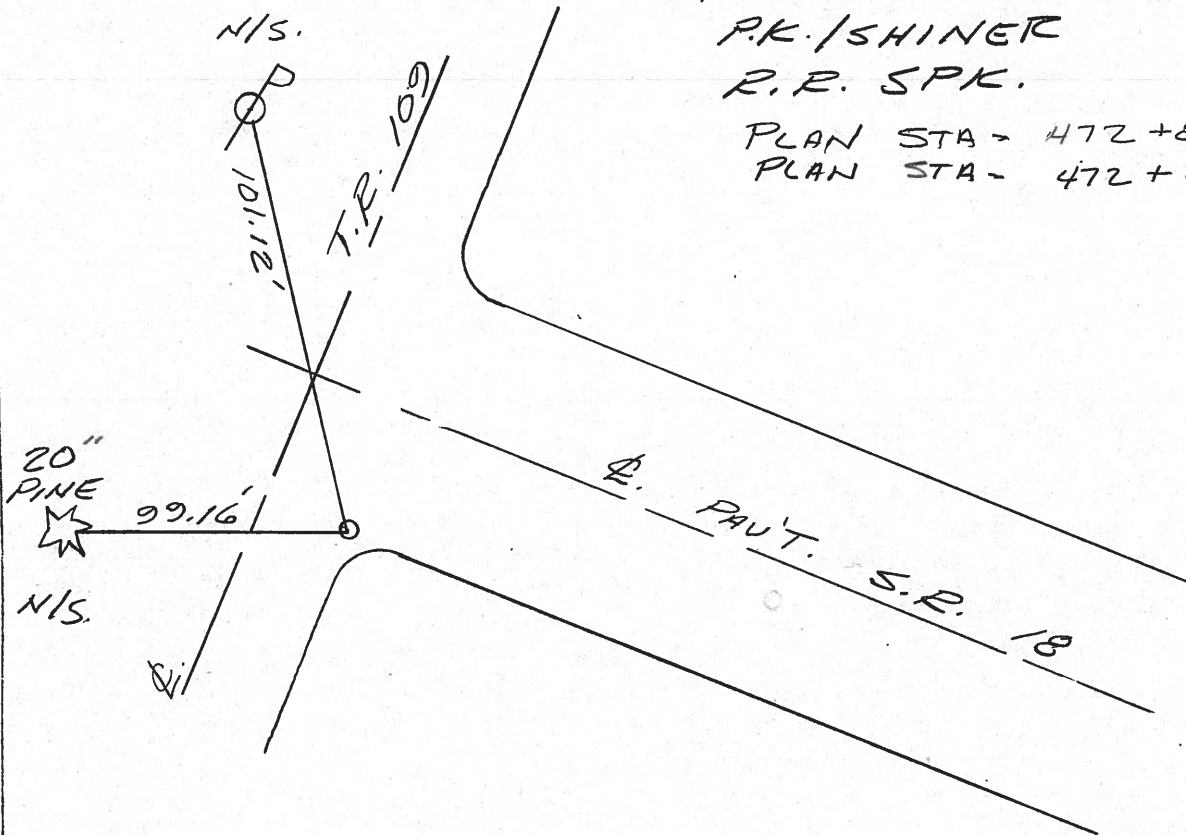
PREVIOUS MONUMENTS:

P.K. / SHINER

R.R. SPK.

PLAN STA - 472+87.33

PLAN STA - 472+66.22



County Seneca S.R. #18

Date OK-9-12-80 @w.s.  
5-19-80

Township: Hopewell

Weather: Cloudy

Section 16

Temp. 58°

T2N, R14E

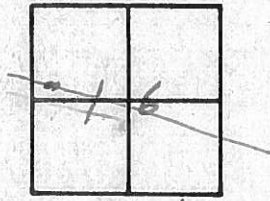
Personnel Schneider

Mosser

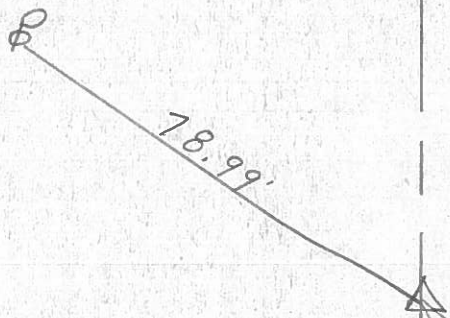
Barbour

Cronin

Ripple Geyman



S.R. #18



472+87.33

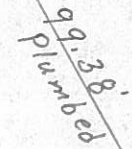
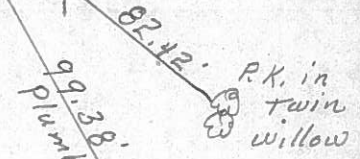
R.R. SPK.

472+66.22

R.R. SPK.

SET P.K. & SHI.

Twp. Rd. #109



20" Pine

PERSONNEL	TITLE	PERSONNEL	TITLE	COUNTY	DATE	WEATHER	TEMP.
Schneider		Potts		Seneca	10-24-68	Cloudy - Rain	50°
Mosser				S. R. 18			
Barbour				SEC. Bascom to Tiffin			
Redding							

DESCRIPTION Ties for Control Points JOB NO. \_\_\_\_\_

