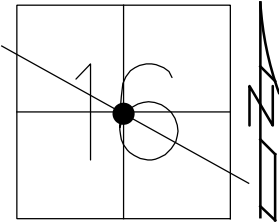


O.D.O.T. DISTRICT 2 SURVEY OFFICE (USE ONLY)

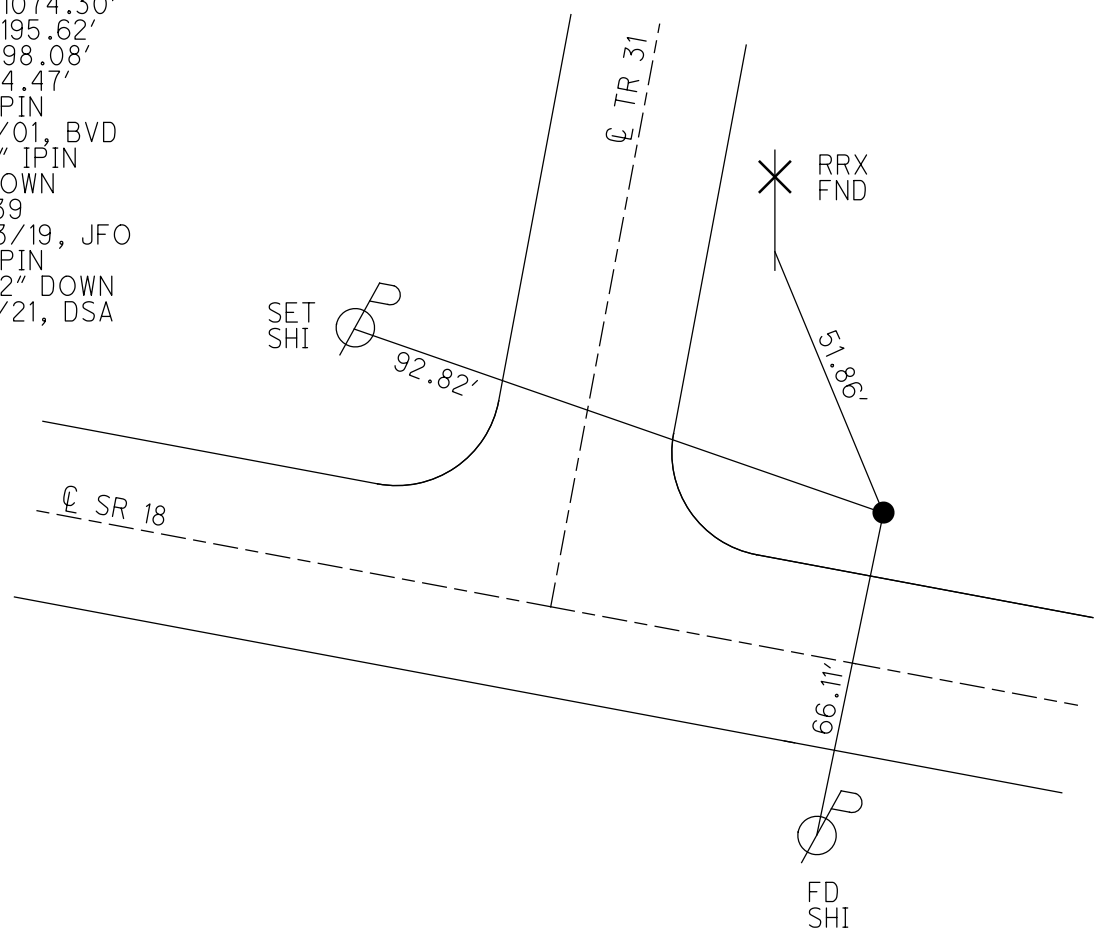
PERSONNEL _____ REFERENCE NO. 39 SHEET 41 OF 48
 NOTES SAVAGE DATE 9/2/21 ROUTE SR 18
 H.C. AUBLE WEATHER SUNNY COUNTY SENECA
 R.C. NIESE TEMP. 64° TOWNSHIP HOPEWELL
 _____ SECTION 16
 DWG BY RHOADES PID PVTRAIN T 2 N R 14 E

TYPE MONUMENT IPIN
~~ON SURFACE~~ - BELOW 3 1/2"
 OFFSET ☉ PAVEMENT 24.0' LT : ~~RT~~
13.5' TO LT EDGE PAVEMENT
 STATION: 501+04



HORZ. DATUM: NAD83(2011) GEOID: 2012A
 GRID: NORTHING: 534285.482 EASTING: 1759035.245

RECORD P.I.
 STA 488+57.14
 $\Delta = 10^{\circ} 26' 00''$ RT
 $D = 5^{\circ} 20' 00''$
 $R = 1074.30'$
 $L = 195.62'$
 $T = 98.08'$
 $E = 4.47'$
 FD IPIN
 6/4/01, BVD
 FD 1" IPIN
 2" DOWN
 REF39
 4/23/19, JFO
 FD IPIN
 3 1/2" DOWN
 9/2/21, DSA



O.D.O.T. DISTRICT 2 SURVEY OFFICE (USE ONLY)

PERSONNEL

REFERENCE NO. 39

SHEET 41 OF 48

NOTES VAN DUSEN

DATE 6/4/01

ROUTE SR 18

H.C. ROUSOS

WEATHER SUNNY

COUNTY SENECA

R.C. BROWN

TEMP. 60°

TOWNSHIP HOPEWELL

SECTION 16

DWG BY NIESE

PID NO PID

T 2 N R 14 E

TYPE MONUMENT IPIN

ON SURFACE - ~~BELOW~~ ON

OFFSET \odot PAVEMENT 24.0' LT : ~~RT~~

13.5' TO LT EDGE PAVEMENT

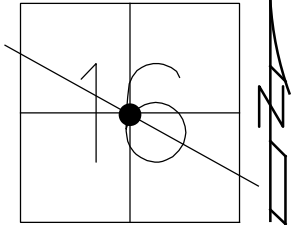
STATION: 501+04

HORZ.DATUM: NAD83(2011)

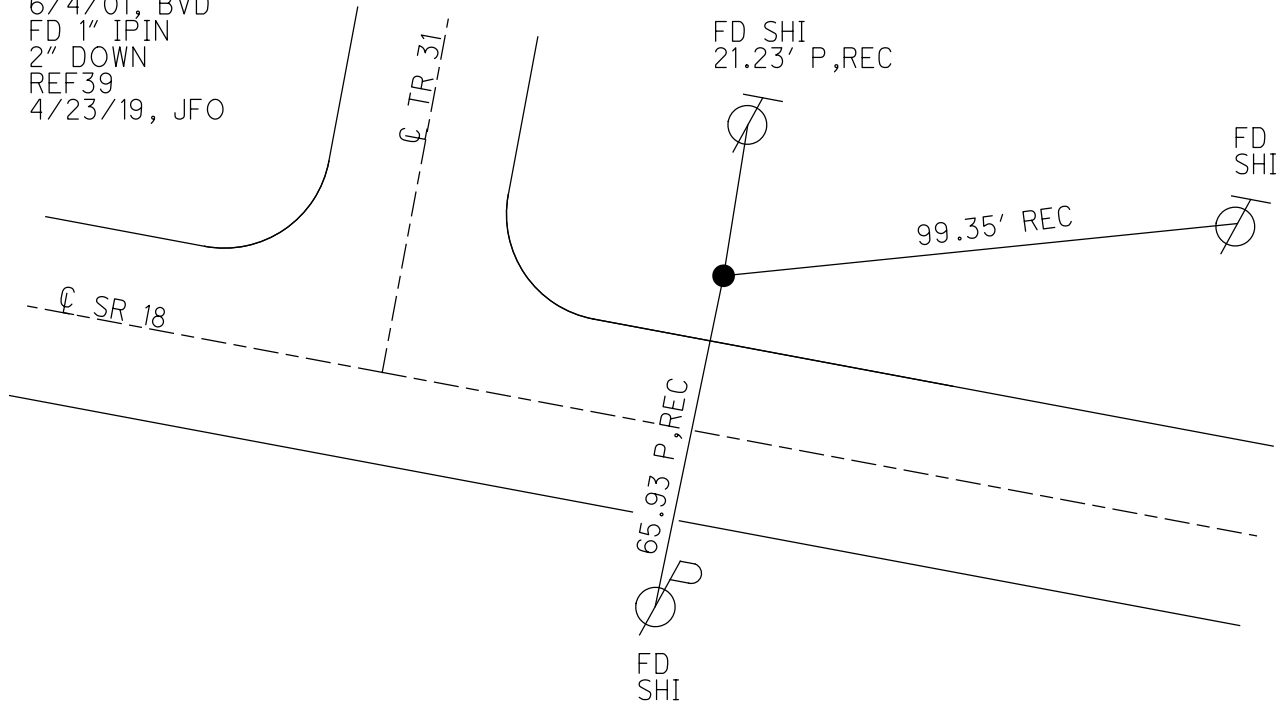
GEOID: 2012A

GRID: NORTHING: 534285.482

EASTING: 1759035.245



RECORD P.I.
 STA 488+57.14
 $\Delta = 10^{\circ} 26' 00''$ RT
 $D = 5^{\circ} 20' 00''$
 $R = 1074.30'$
 $L = 195.62'$
 $T = 98.08'$
 $E = 4.47'$
 FD IPIN
 6/4/01, BVD
 FD 1" IPIN
 2" DOWN
 REF39
 4/23/19, JFO



O.D.O.T. DISTRICT 2 SURVEY OFFICE

PERSONNEL _____

REFERENCE NO. 39

SHEET 19 OF 26

NOTES VanRusen

H.C. Rousos

R.C. Brown

DATE 6-4-01

WEATHER Sunny

TEMP. +60°

ROUTE 18

COUNTY Schoen

TOWNSHIP Hopewell

SECTION 16

T 2 N R 14 E

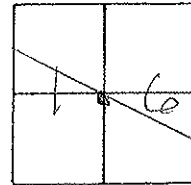
TYPE MONUMENT Ivan Pill

ON SURFACE - ~~BELOW~~

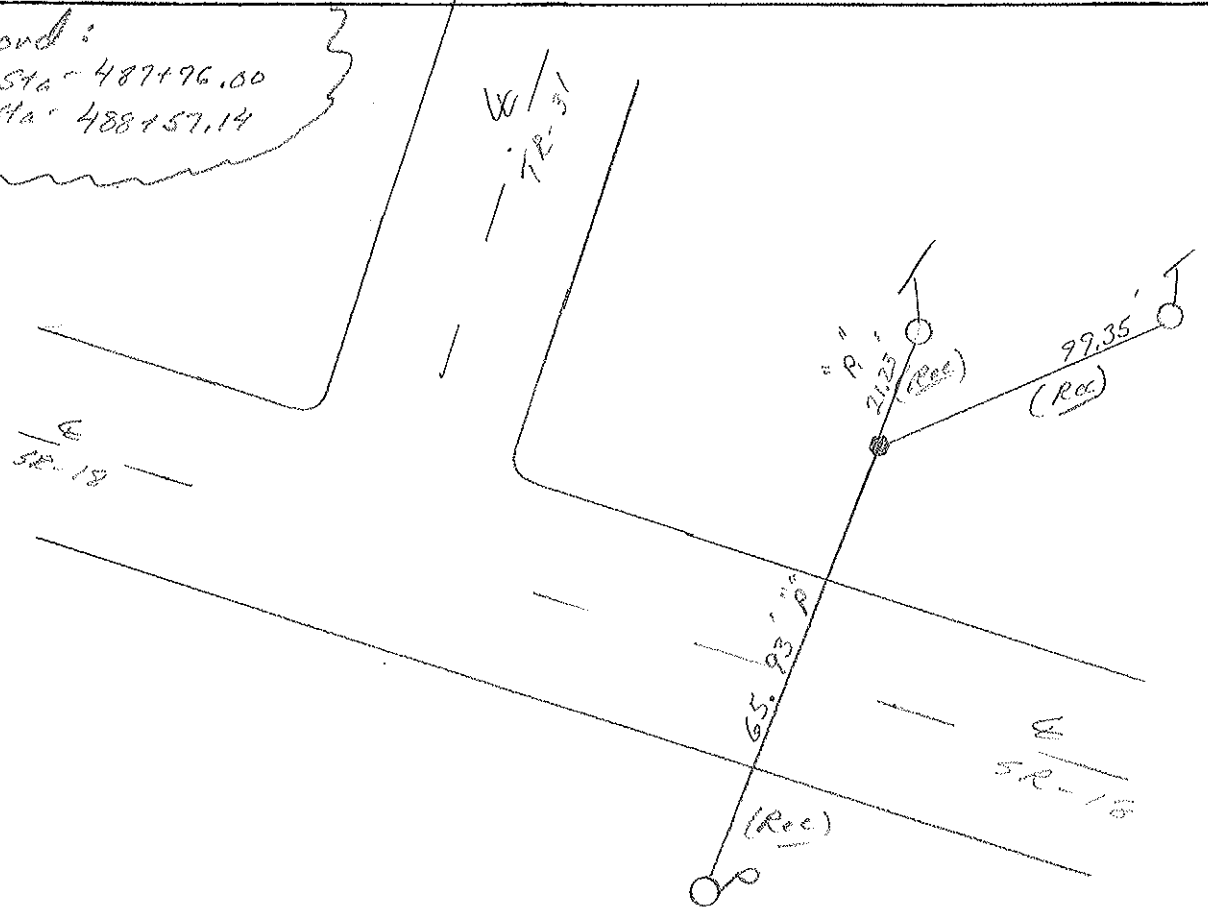
LEFT - ~~RIGHT~~ 24' Lt.

13.5 TO N. EDGE PAVEMENT

S.L.M. 500778



Record:
 Plan Sta - 487+96.00
 Plan Sta - 488+57.14



O.D.O.T. DISTRICT 2 SURVEY OFFICE

PERSONNEL _____

REFERENCE NO. 39

SHEET 19 OF 27

NOTES RIPPLE

H.C. BARBOUR

DATE 6-24-1991

ROUTE 18

R.C. GEYMAN

WEATHER _____

COUNTY SENECA

TEMP. 81°

TOWNSHIP HOPEWELL

SECTION 16

T. 2 N R. 14 E

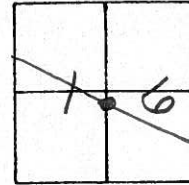
TYPE MONUMENT "500+78 (OLD STA) IRON PIN, R.R. SPIKE"

ON SURFACE - BELOW _____

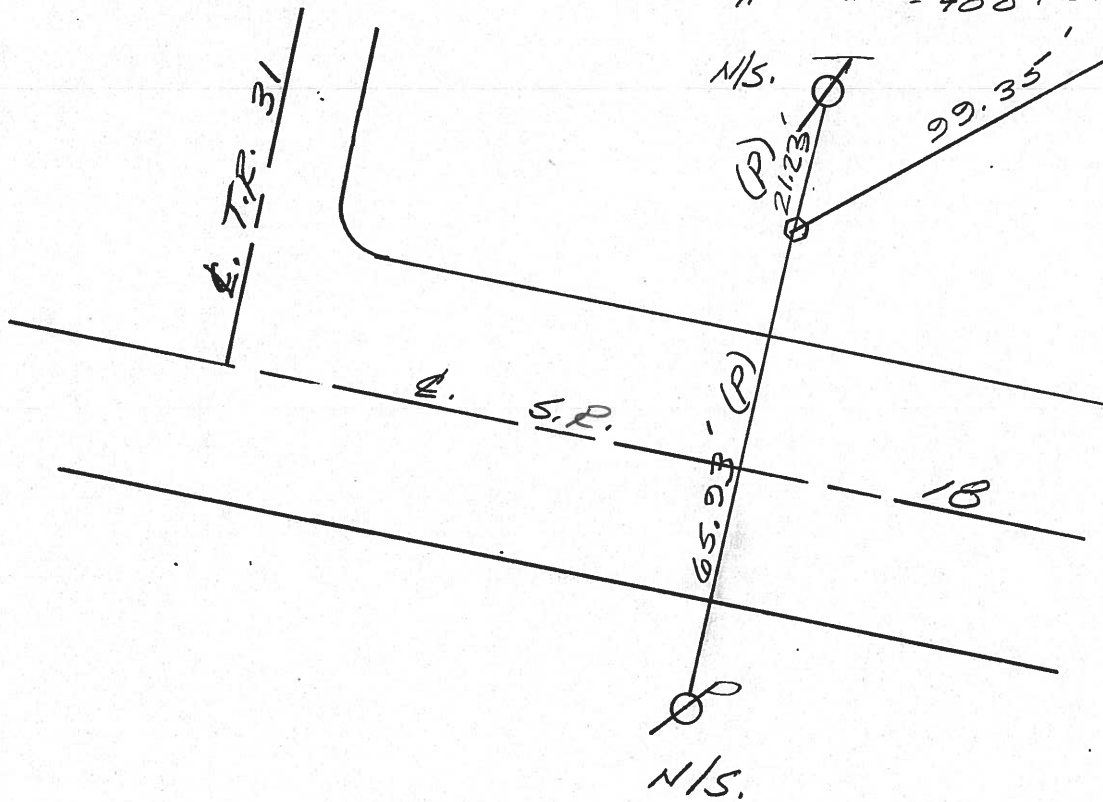
LEFT - 0 PAV'T. - RIGHT FIN-24'

13.5 TO N EDGE PAVEMENT

S.L.M. 500+78



PLAN STA = 487 + 96.06 RR SPIKE
 " " = 488 + 57.14 I. PIN
 N/S.



ODOT. DISTRICT 2 SURVEY OFFICE

Sht. of

19

OK-9-12-80 G.W.S.

County Seneca S.R. #18

Date 5-19-80

Township Hopewell

Weather Cloudy

Section 16

Temp. 58°

T2N, R14E

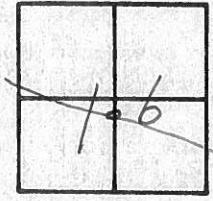
Personnel Schneider

Mosser

Barbour

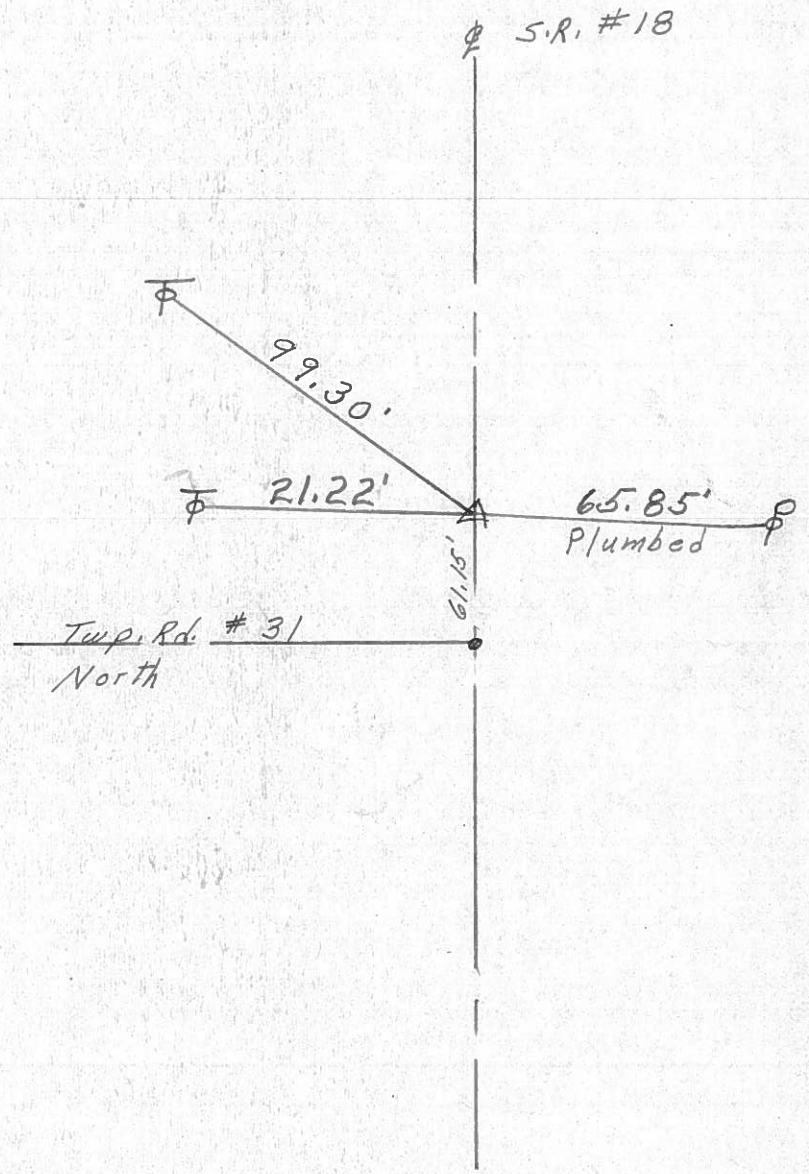
Cronin

Ripple Geyman



39

OK
 488+57.14
 Iron Pin
 487+96.00
 R.R. SPK.



PERSONNEL	TITLE	PERSONNEL	TITLE	COUNTY	DATE	WEATHER	TEMP.
Schneider		Potts		Seneca	10-21-68	Cloudy-Rain	45°
Masser				S. R. 18			
Barbour				SEC. Bascom to Tiffin			
Redding							

DESCRIPTION Ties for Control Points JOB NO. _____

