

O.D.O.T. DISTRICT 2 SURVEY OFFICE (USE ONLY)

PERSONNEL

REFERENCE NO. 41

SHEET 44 OF 48

NOTES SAVAGE
 H.C. AUBLE
 R.C. NIESE

DATE 9/2/21
 WEATHER SUNNY
 TEMP. 64°

ROUTE SR 18
 COUNTY SENECA
 TOWNSHIP HOPEWELL
 SECTION 15
 T 2 N R 14 E

DWG BY RHOADES PID PVTRAIN

TYPE MONUMENT P.K./WASHER

ON SURFACE - ~~BELOW~~ ON

OFFSET 11.0' TO LT EDGE PAVEMENT
 PAVEMENT 0.8' LT : RT

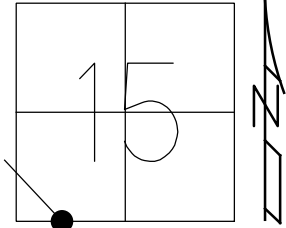
STATION: 558+87

HORZ.DATUM: NAD83(2011)

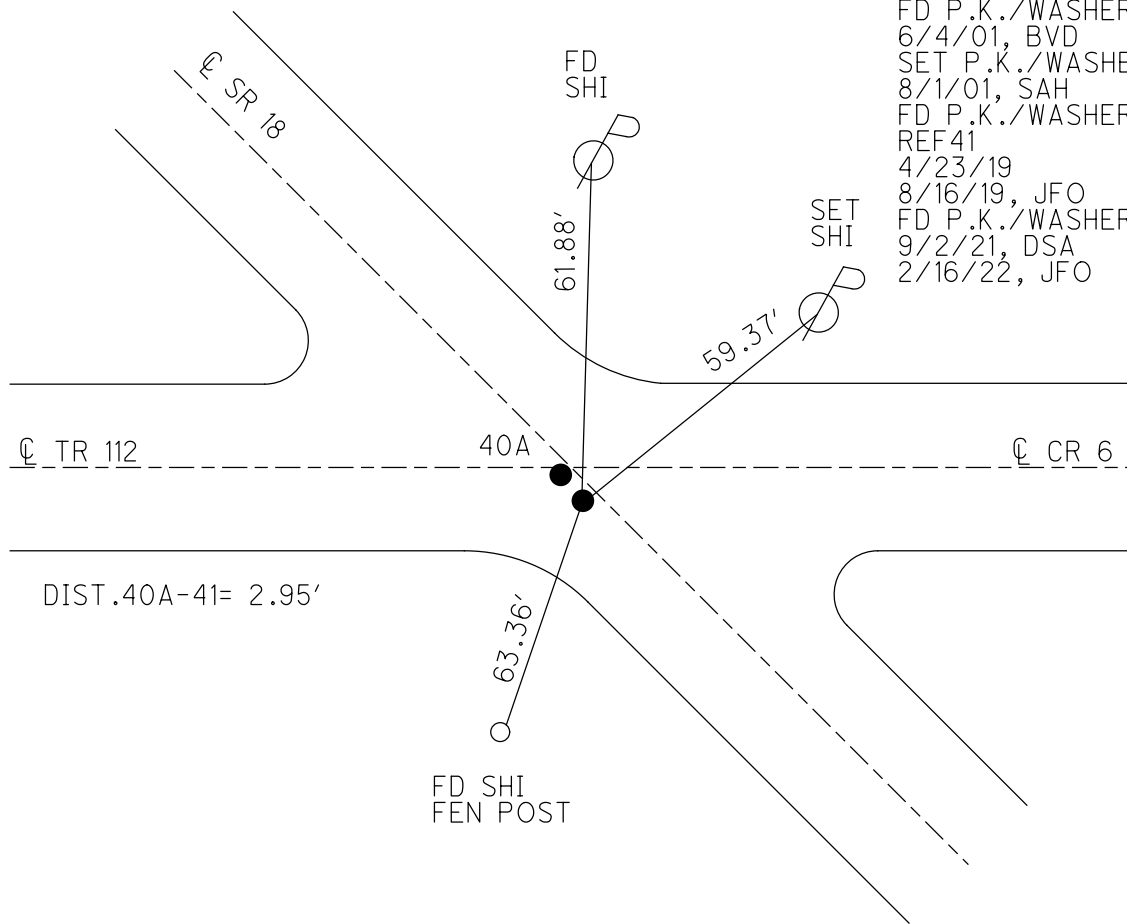
GEOID: 2012A

GRID: NORTHING: 531634.177

EASTING: 1763997.671



RECORD:
 FD P.K./WASHER
 11/5/91
 FD P.K./WASHER
 6/4/01, BVD
 SET P.K./WASHER
 8/1/01, SAH
 FD P.K./WASHER
 REF41
 4/23/19
 8/16/19, JFO
 FD P.K./WASHER
 9/2/21, DSA
 2/16/22, JFO

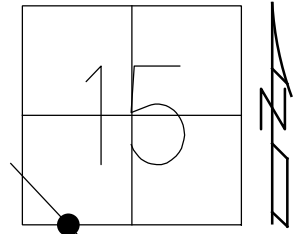


O.D.O.T. DISTRICT 2 SURVEY OFFICE (USE ONLY)

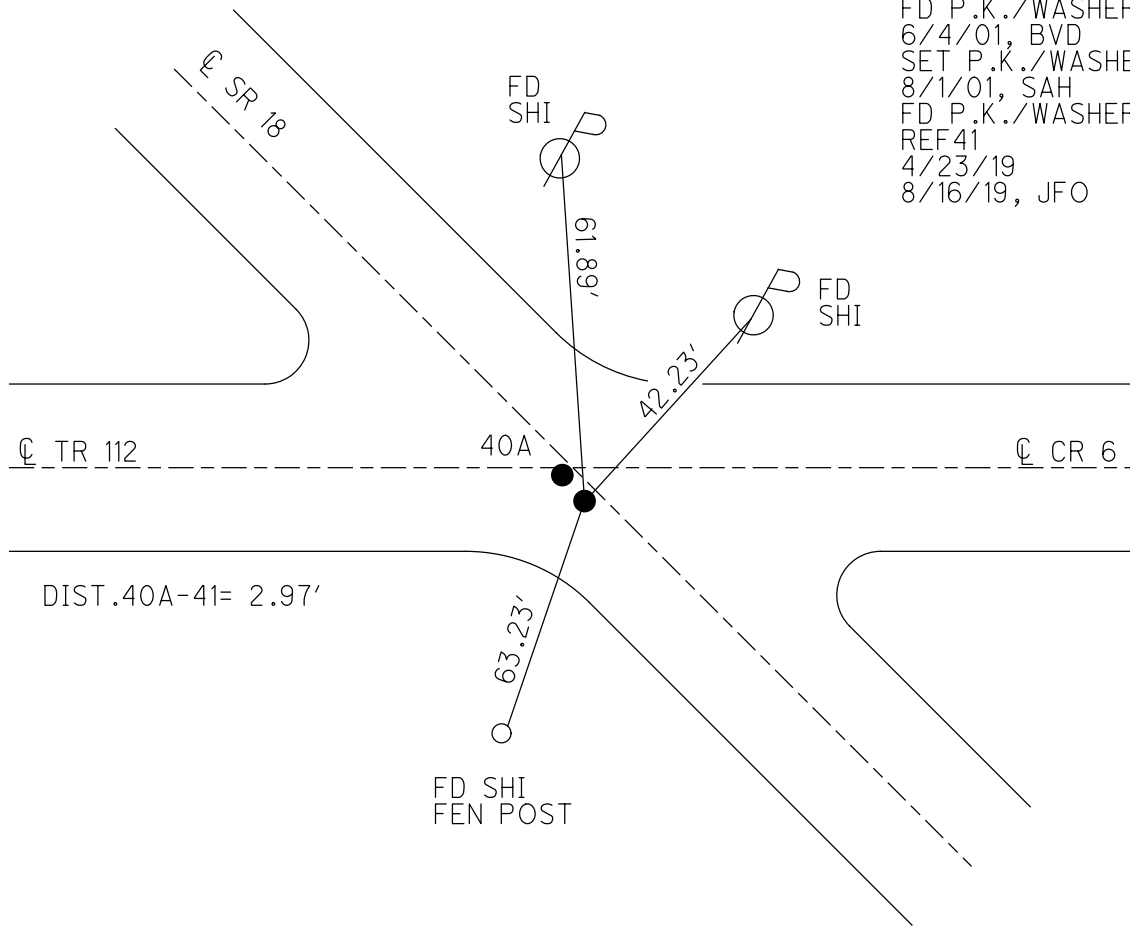
PERSONNEL _____ REFERENCE NO. 41 SHEET 44 OF 48
 NOTES VAN DUSEN DATE 6/4/01 ROUTE SR 18
 H.C. ROUSOS WEATHER SUNNY COUNTY SENECA
 R.C. BROWN TEMP. 60° TOWNSHIP HOPEWELL
 SECTION 15
 DWG BY NIESE PID NO PID T 2 N R 14 E

TYPE MONUMENT P.K./WASHER
 ON SURFACE - ~~BELOW~~ ON
 OFFSET C PAVEMENT 0.8' ~~LT~~ : RT
11.0' TO LT EDGE PAVEMENT
 STATION: 558+87

HORZ.DATUM: NAD83(2011) GEOID: 2012A
 GRID: NORTHING: 531634.177 EASTING: 1763997.671



RECORD:
 FD P.K./WASHER
 11/5/91
 FD P.K./WASHER
 6/4/01, BVD
 SET P.K./WASHER
 8/1/01, SAH
 FD P.K./WASHER
 REF41
 4/23/19
 8/16/19, JFO



Q.D.O.T. DISTRICT 2 SURVEY OFFICE

Sht. ___ of ___

OK-9-12-80-G.W.S.

County Seneca S.R. # 18

Date 5-19-80

Township Hopewell

Weather cloudy

Section 15 & 22

Temp. 58°

T2N, R1E

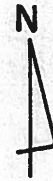
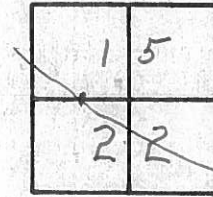
Personnel Schneider

Mosser

Barbour

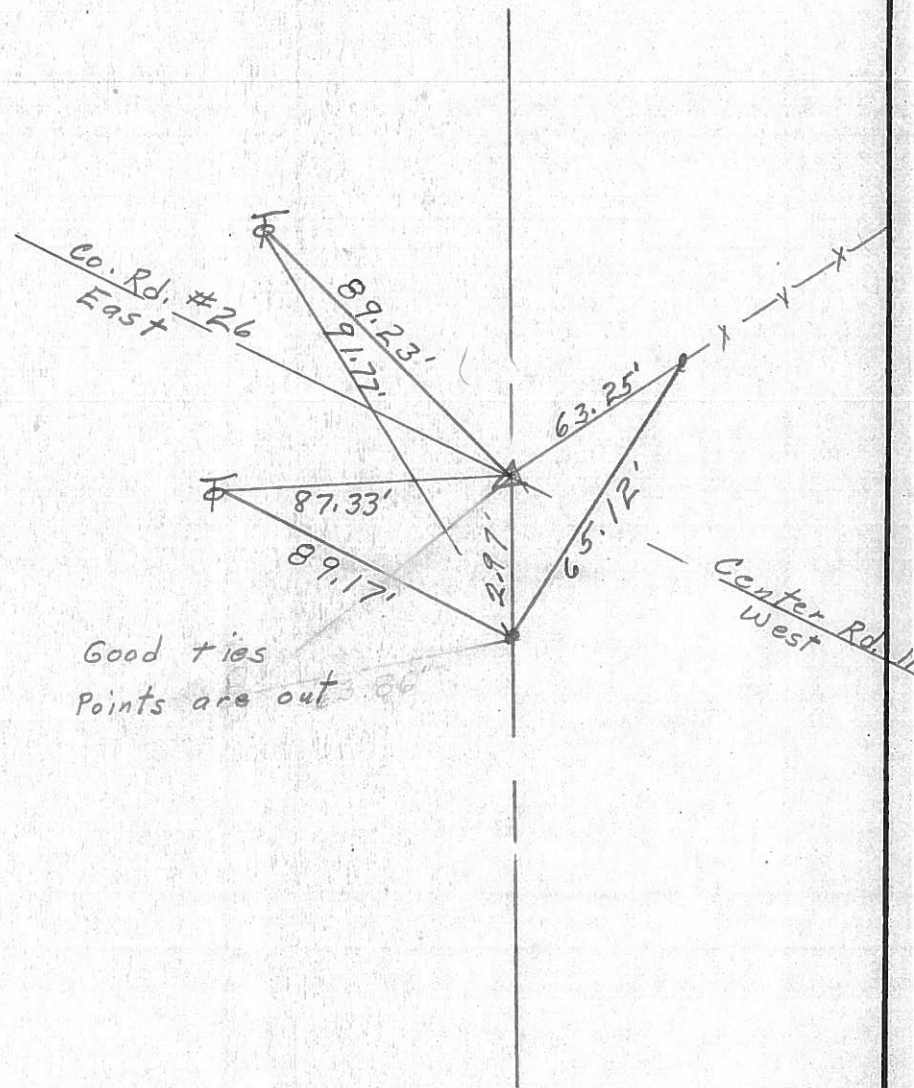
Cronin

Ripple Geyman



41

Co. Rd. #18



45.14 77.4

1942 Plan

SET P.K. NAILS & SHI.

Good ties
Points are out 66'

PERSONNEL	TITLE	PERSONNEL	TITLE	COUNTY	DATE	WEATHER	TEMP.
Schneider		Potts		Seneca	10-21-68	Cloudy-Rain	45°
Masser				S. R. 18			
Barbour				SEC. Bascom to Tiffin			
Redding							

DESCRIPTION: Ties for Control Points

