

O.D.O.T. DISTRICT 2 SURVEY OFFICE (USE ONLY)

PERSONNEL

REFERENCE NO. 41 A

SHEET 45 OF 48

NOTES RHOADES

DATE 9/8/21

ROUTE SR 18

H.C. AUBLE

WEATHER SUNNY

COUNTY SENECA

R.C. NIESE

TEMP. 68°

TOWNSHIP HOPEWELL

SECTION 22

DWG BY WHITAKER

PID PVTRN

T 2 N R 14 E

TYPE MONUMENT P.K./WASHER

ON SURFACE - ~~BELOW~~ ON

OFFSET Q PAVEMENT 4.0' ~~RT~~ : RT

5.0' TO RT EDGE PAVEMENT

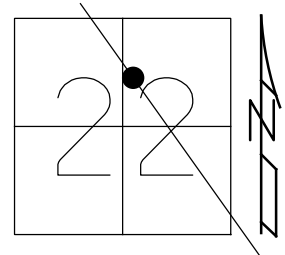
STATION: 589+95

HORIZ.DATUM: NAD83(2011)

GEOID: 2012A

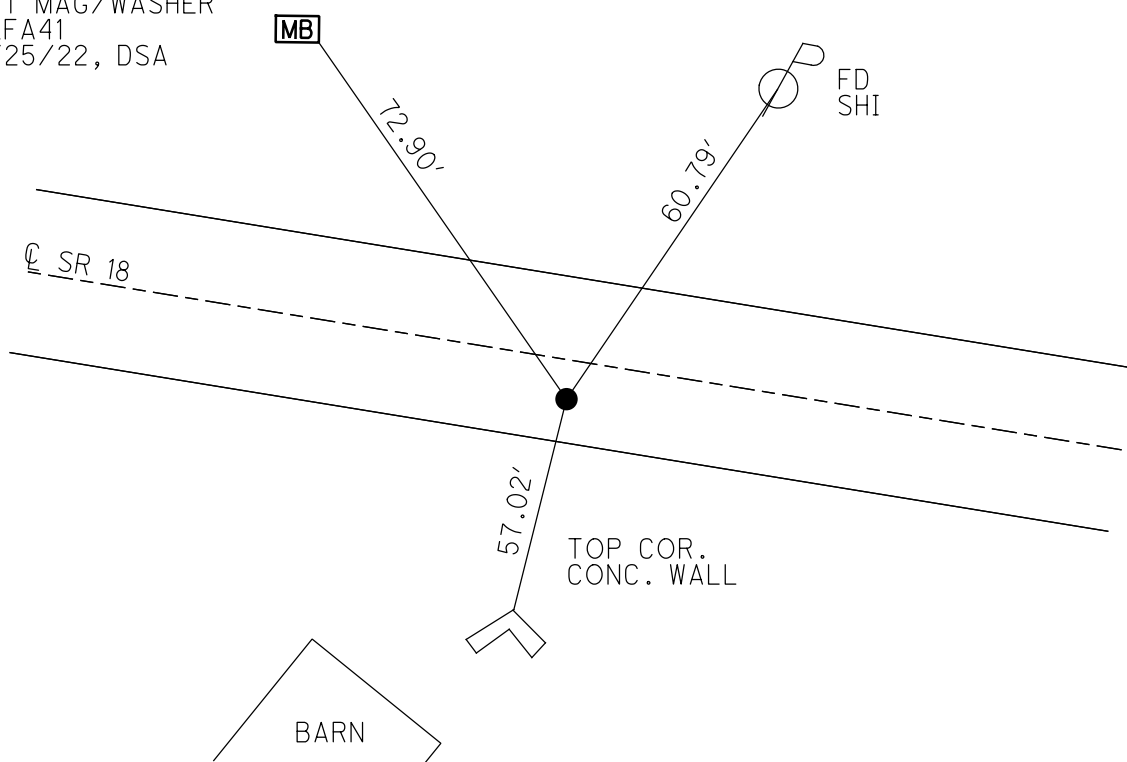
GRID: NORTHING: 529503.892

EASTING: 1766259.289



RECORD:  
 FD P.K.SHANK  
 FD P.K./WASHER  
 6/4/01, BVD  
 SET P.K./WASHER  
 8/1/01, SAH  
 FD P.K./WASHER  
 REFA41  
 4/23/19  
 8/16/19, JFO  
 D.N.F  
 2/16/22, JFO  
 SET MAG/WASHER  
 REFA41  
 7/25/22, DSA

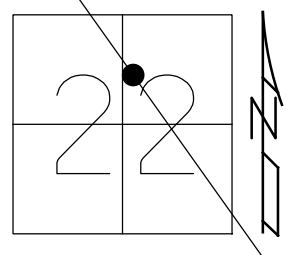
FD TACK  
 #3343



O.D.O.T. DISTRICT 2 SURVEY OFFICE (USE ONLY)

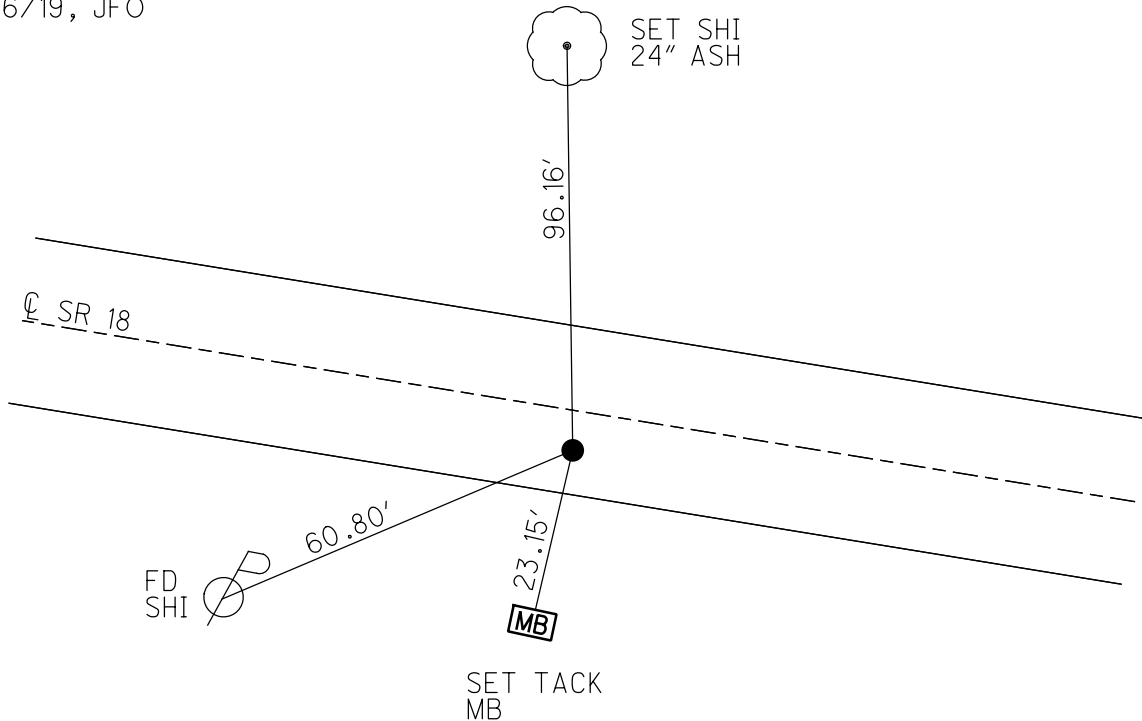
PERSONNEL \_\_\_\_\_ REFERENCE NO. 41 A SHEET 45 OF 48  
 NOTES VAN DUSEN DATE 6/4/01 ROUTE SR 18  
 H.C. ROUSOS WEATHER SUNNY COUNTY SENECA  
 R.C. BROWN TEMP. 60° TOWNSHIP HOPEWELL  
 SECTION 22  
 DWG BY NIESE PID NO PID T 2 N R 14 E

TYPE MONUMENT P.K./WASHER  
 ON SURFACE - ~~BELOW~~ ON  
 OFFSET CL PAVEMENT 4.0' ~~RT~~ : RT  
5.0' TO RT EDGE PAVEMENT  
 STATION: 589+95



HORZ.DATUM: NAD83(2011) GEOID: 2012A  
 GRID: NORTHING: 529503.892 EASTING: 1766259.289

RECORD:  
 PREV. MOUMENT  
 P.K.SHANK  
 FD P.K./WASHER  
 6/4/01, BVD  
 SET P.K./WASHER  
 8/1/01, SAH  
 FD P.K./WASHER  
 REFA41  
 4/23/19  
 8/16/19, JFO



O.D.O.T. DISTRICT 2 SURVEY OFFICE

PERSONNEL

REFERENCE NO. 41-A

SHEET 22 OF 26

NOTES VAN DUSEN

H.C. Rousos

R.C. ADAM B.

DATE 6-4-01

WEATHER SUNNY

TEMP. +60° F

ROUTE 18

COUNTY SENECA

TOWNSHIP HOPEWELL

SECTION 22

T. 2 N R. 14 E

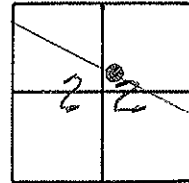
TYPE MONUMENT PK&WASHER

ON SURFACE - BELOW YES

LEFT - 0 PAV'T. - RIGHT 4'

5 TORT. EDGE PAVEMENT

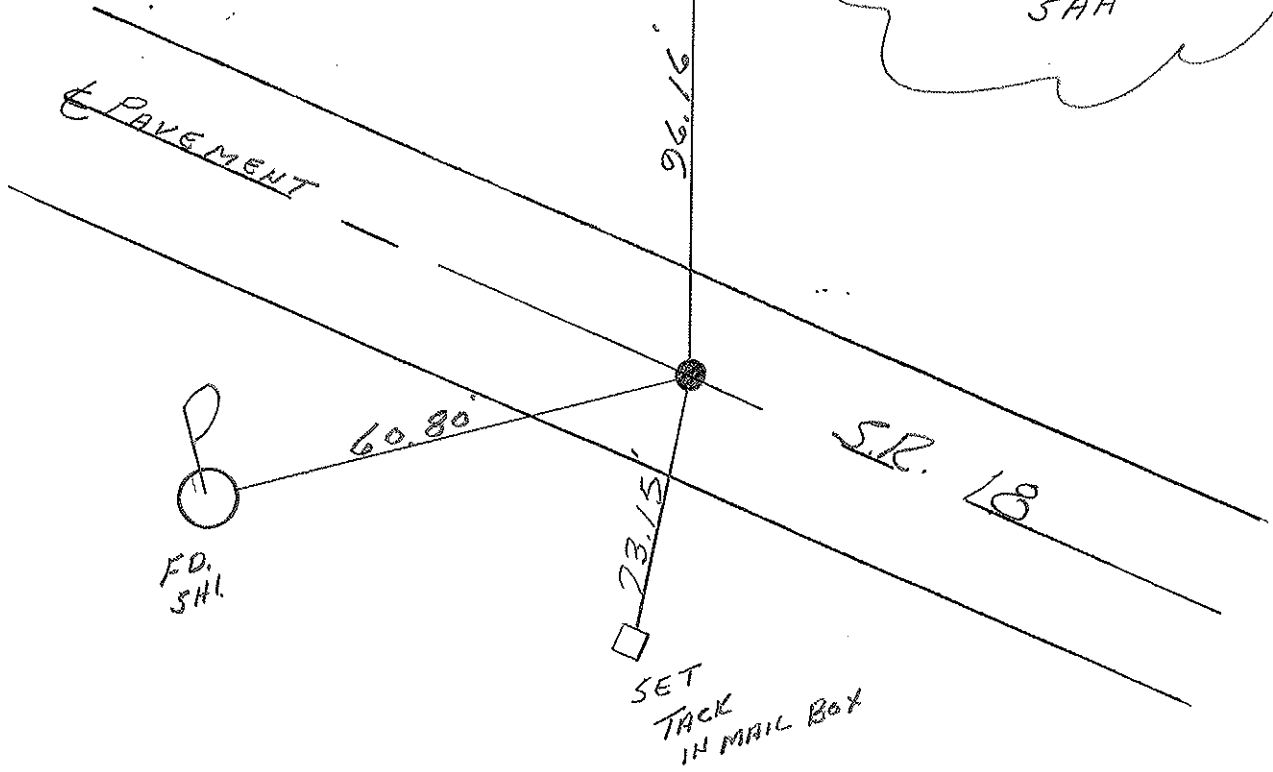
S.L.M. 589+9.5



PREVIOUS MONUMENT  
BROKEN PK,

SET  
SHI. " 24 ASH

SET PK&WASHER  
8-1-01  
SAH



O.D.O.T. DISTRICT 2 SURVEY OFFICE

PERSONNEL

REFERENCE NO. 41 A

SHEET 23 OF 27

NOTES CHENEY

H.C. RIPPLE

R.C. BARBOUR

DATE 10-8-1991

WEATHER SUNNY

TEMP. 60°

ROUTE 18

COUNTY SENECA

TOWNSHIP HOPWELL

SECTION 22

T2 N R 14 E

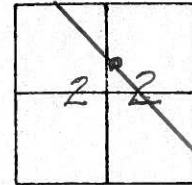
TYPE MONUMENT SET PK/WASHER

ON SURFACE - ~~BELOW~~

~~LEFT~~ - ℄ PAV'T. - RIGHT 4'

TO EDGE PAVEMENT

S.L.M. 589+84



PREVIOUS MONUMENT:

BROKEN P.K.

