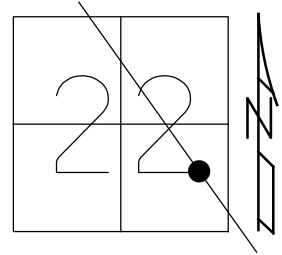


O.D.O.T. DISTRICT 2 SURVEY OFFICE (USE ONLY)

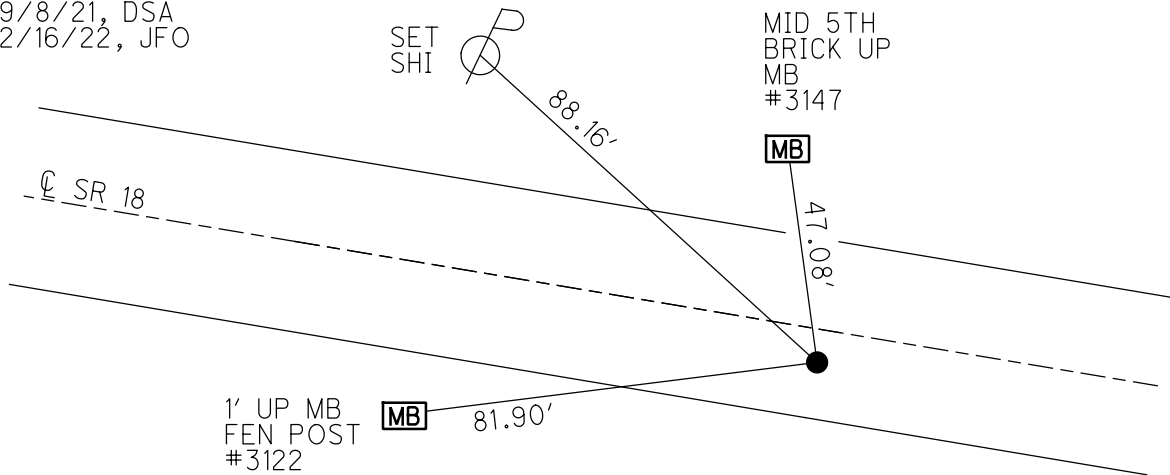
PERSONNEL _____ REFERENCE NO. 42 SHEET 48 OF 48
 NOTES RHOADES DATE 9/8/21 ROUTE SR 18
 H.C. AUBLE WEATHER SUNNY COUNTY SENECA
 R.C. NIESE TEMP. 68° TOWNSHIP HOPEWELL
 DWG BY RHOADES PID PVTRAIN SECTION 22
 T 2 N R 14 E

TYPE MONUMENT P.K.NAIL
 ON SURFACE - ~~BELOW~~ ON
 OFFSET CL PAVEMENT 3.0' ~~LT~~ : RT
8.0' TO RT EDGE PAVEMENT
 STATION: 603+06

HORIZ.DATUM: NAD83(2011) GEOID: 2012A
 GRID: NORTHING: 528627.034 EASTING: 1767234.773



RECORD:
 PREV MONUMENTS:
 P.K./SHINER
 P.K.NAIL
 FD P.K./WASHER
 6/4/01, BVD
 SET P.K./WASHER
 8/1/01, SAH
 FD P.K./WASHER
 REF42
 4/22/19
 8/18/19, JFO
 FD P.K.NAIL
 9/8/21, DSA
 2/16/22, JFO



O.D.O.T. DISTRICT 2 SURVEY OFFICE (USE ONLY)

PERSONNEL

REFERENCE NO. 42

SHEET 48 OF 48

NOTES VAN DUSEN

DATE 6/4/01

ROUTE SR 18

H.C. ROUSOS

WEATHER SUNNY

COUNTY SENECA

R.C. BROWN

TEMP. 60°

TOWNSHIP HOPEWELL

SECTION 22

DWG BY NIESE PID NO PID

T 2 N R 14 E

TYPE MONUMENT P.K./WASHER

ON SURFACE - ~~BELOW~~ ON

OFFSET 3.0' ~~LT~~ : RT

8.0' TO RT EDGE PAVEMENT

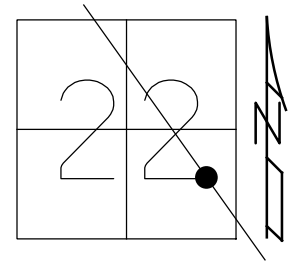
STATION: 603+06

HORIZ.DATUM: NAD83(2011)

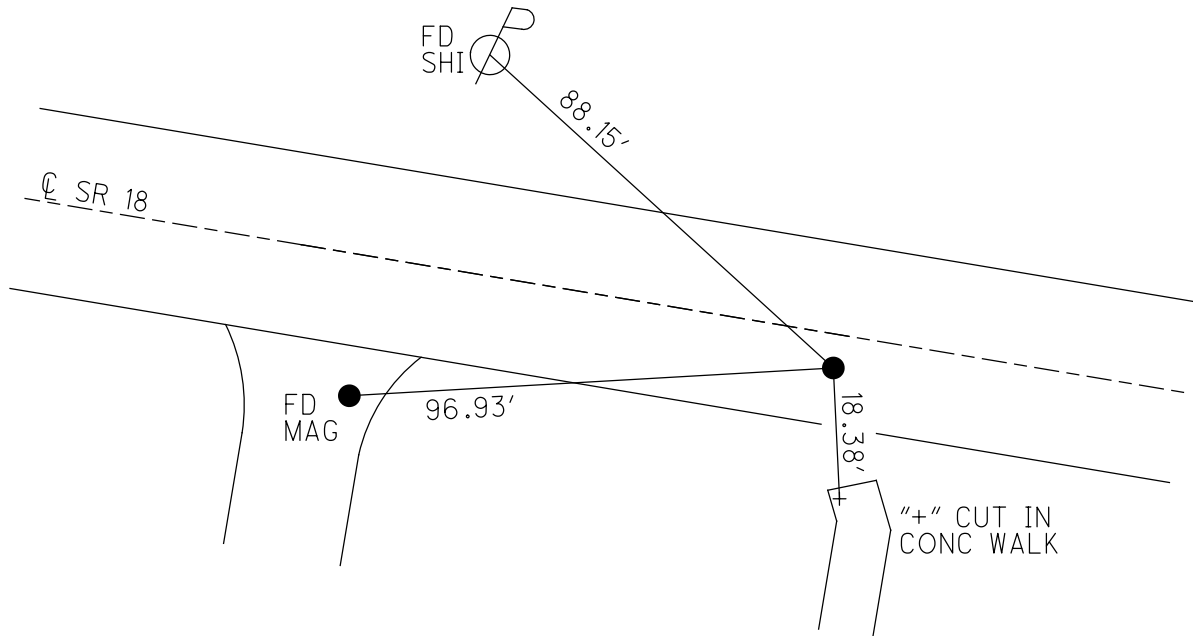
GEOID: 2012A

GRID: NORTHING: 528627.034

EASTING: 1767234.773



RECORD:
 PREV MONUMENTS:
 P.K./SHINER
 P.K.NAIL
 FD P.K./WASHER
 6/4/01, BVD
 SET P.K./WASHER
 8/1/01, SAH
 FD P.K./WASHER
 REF42
 4/22/19
 8/18/19, JFO



O.D.O.T. DISTRICT 2 SURVEY OFFICE

PERSONNEL

REFERENCE NO. 42

SHEET 25 OF 26

NOTES VAN DUSEN

H.C. KOUSOS

R.C. ADAM B.

DATE 6-4-01

WEATHER SUNNY

TEMP. +60° F

ROUTE 18

COUNTY SENECA

TOWNSHIP HOPEWELL

SECTION 22

T. 2 N. R. 14 E.

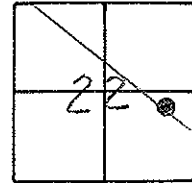
TYPE MONUMENT PK& WASHER

ON SURFACE - BELOW YES

LEFT - 0 PAV'T. - RIGHT 3'

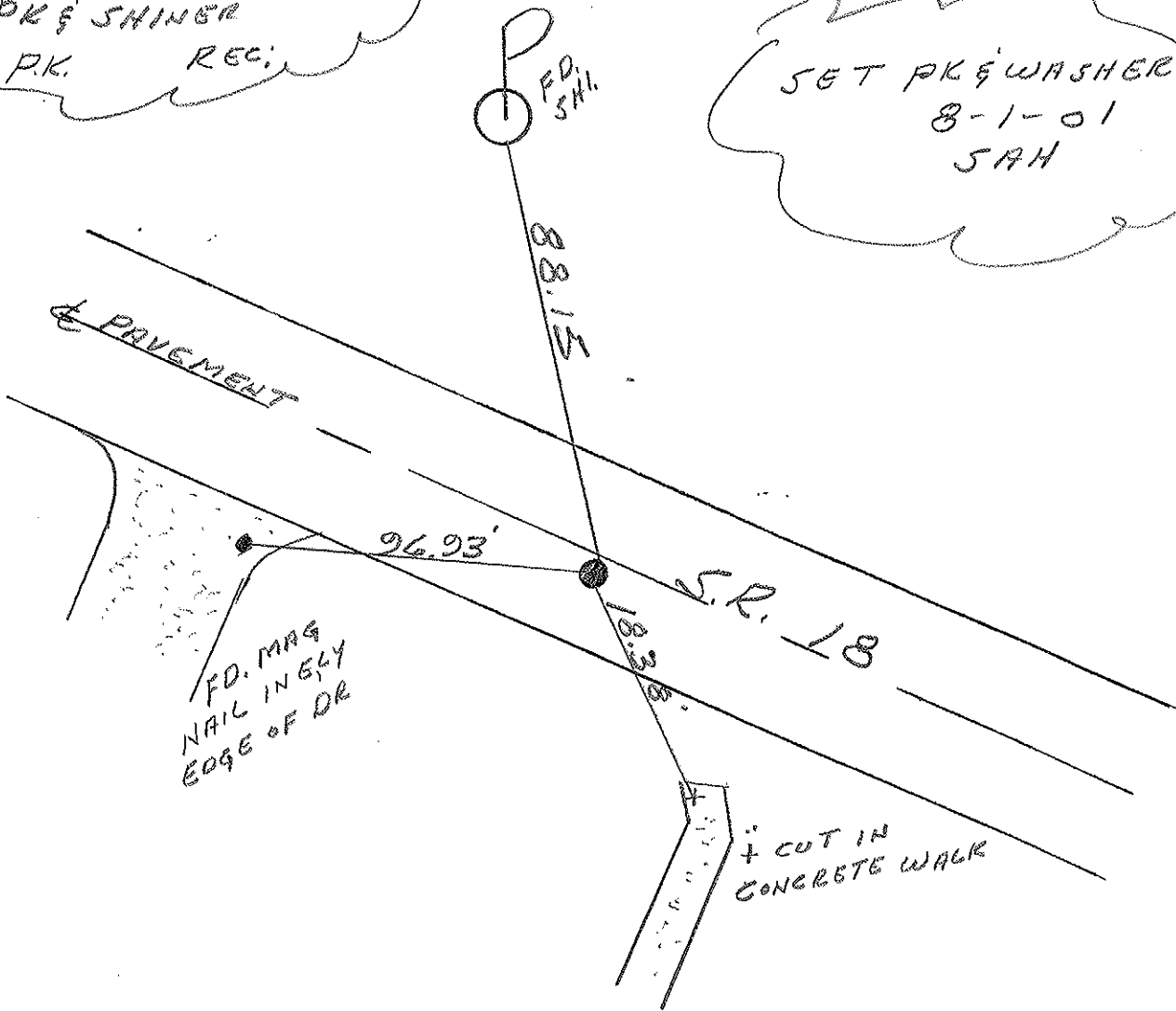
8' TO RT. EDGE PAVEMENT

S.L.M. 603+06



PREVIOUS MONUMENTS:
PK& SHINGR
P.K. REC:

SET PK& WASHER
8-1-01
JAH



O.D.O.T. DISTRICT 2 SURVEY OFFICE

PERSONNEL _____

REFERENCE NO. 42

SHEET 22 OF 27

NOTES CHENEY

H.C. RIPPLE

R.C. BARBOUR

DATE 10-8-1991

WEATHER SUNNY

TEMP. 60°

ROUTE 18

COUNTY SENECA

TOWNSHIP HOPEWELL

SECTION 22

T2N R14E

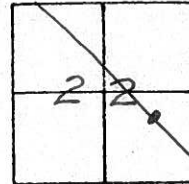
TYPE MONUMENT SET PK/WASHER

ON SURFACE - ~~BELOW~~ _____

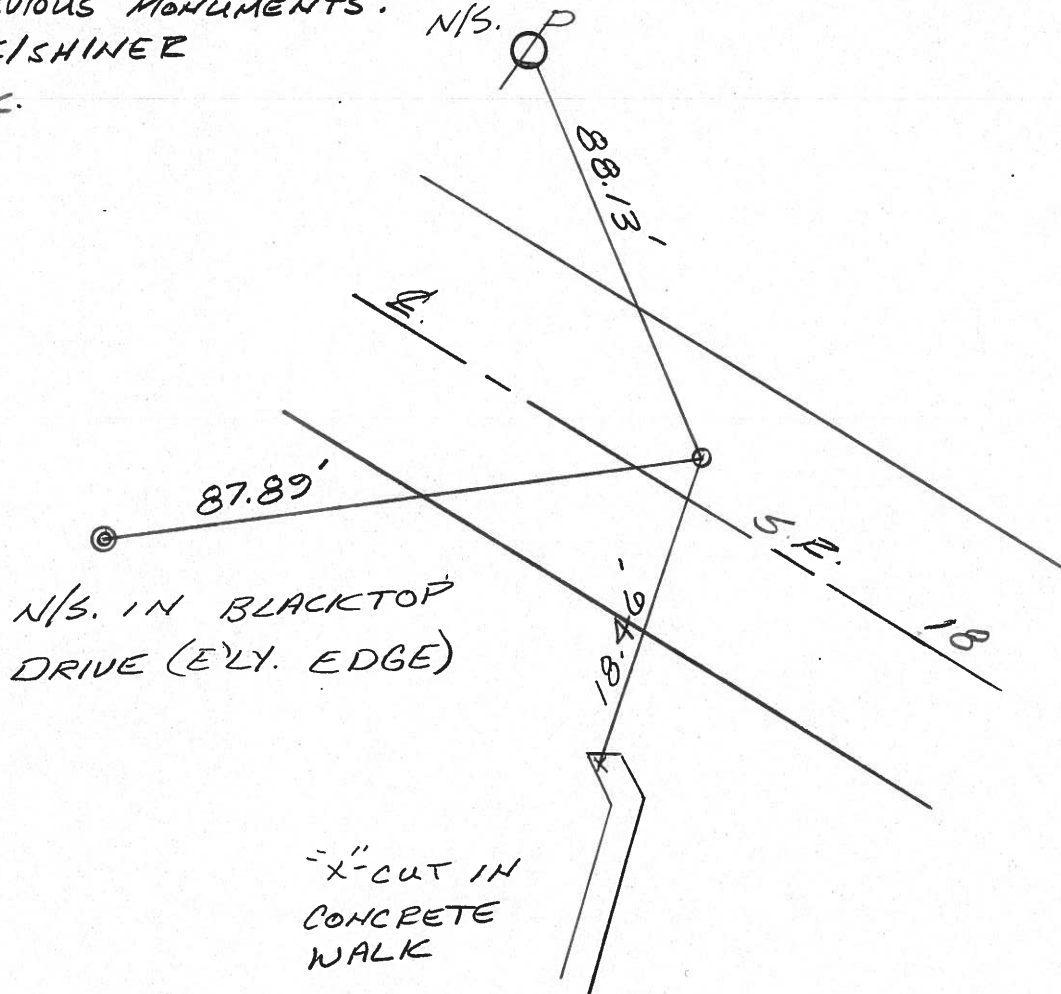
~~LEFT~~ & PAV'T. - RIGHT 3'

8' TO RT. EDGE PAVEMENT

S.L.M. 602+97



PREVIOUS MONUMENTS:
 PK/SHINER
 PK.



Q.D.O.T. DISTRICT 2 SURVEY OFFICE

Sht. ___ of ___

OK. 9-12-80 - G.W.S.

County Seneca S.R. # 18

Date 5-19-80

Township Hopewell

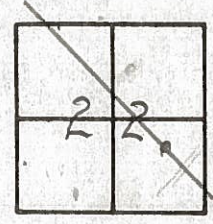
Weather cloudy

Section 22

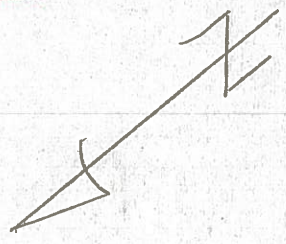
Temp. 58°

T2N, R14E

Personnel Schneider
Mosser
Barbour
Cronin
Ripple Geyman

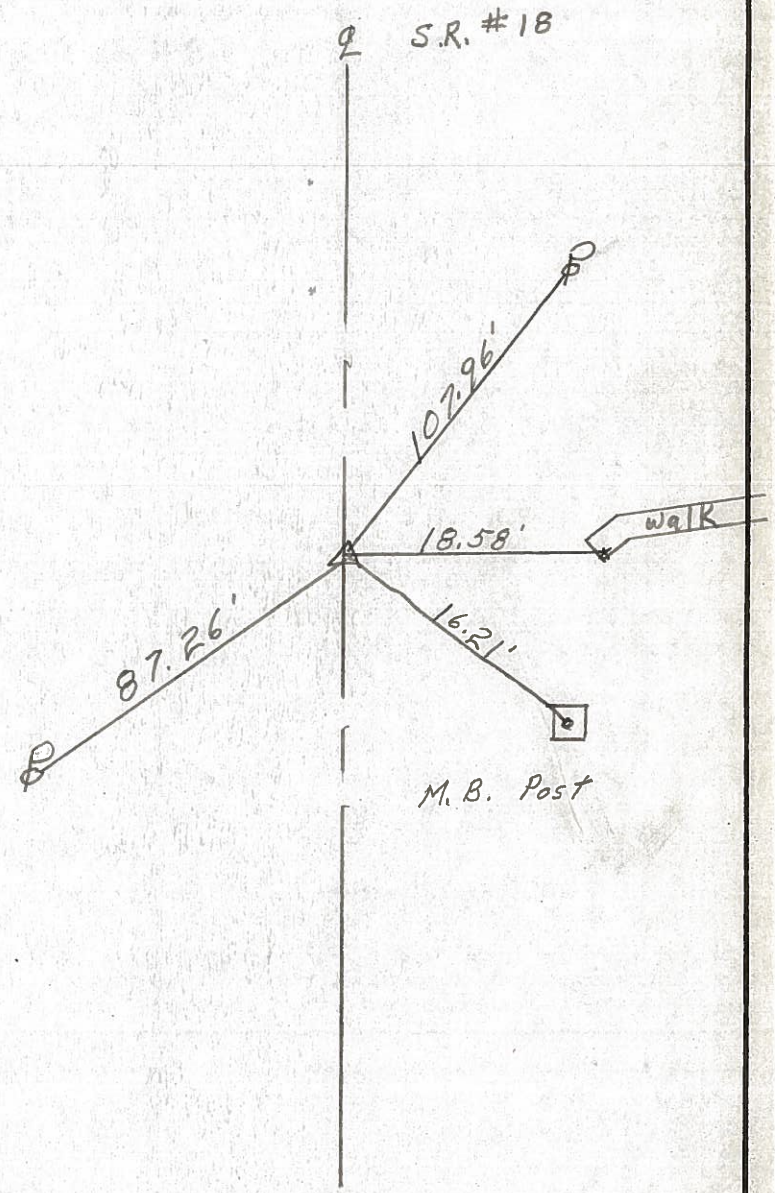


42



P.K. Nail
 2' Rt. of \perp

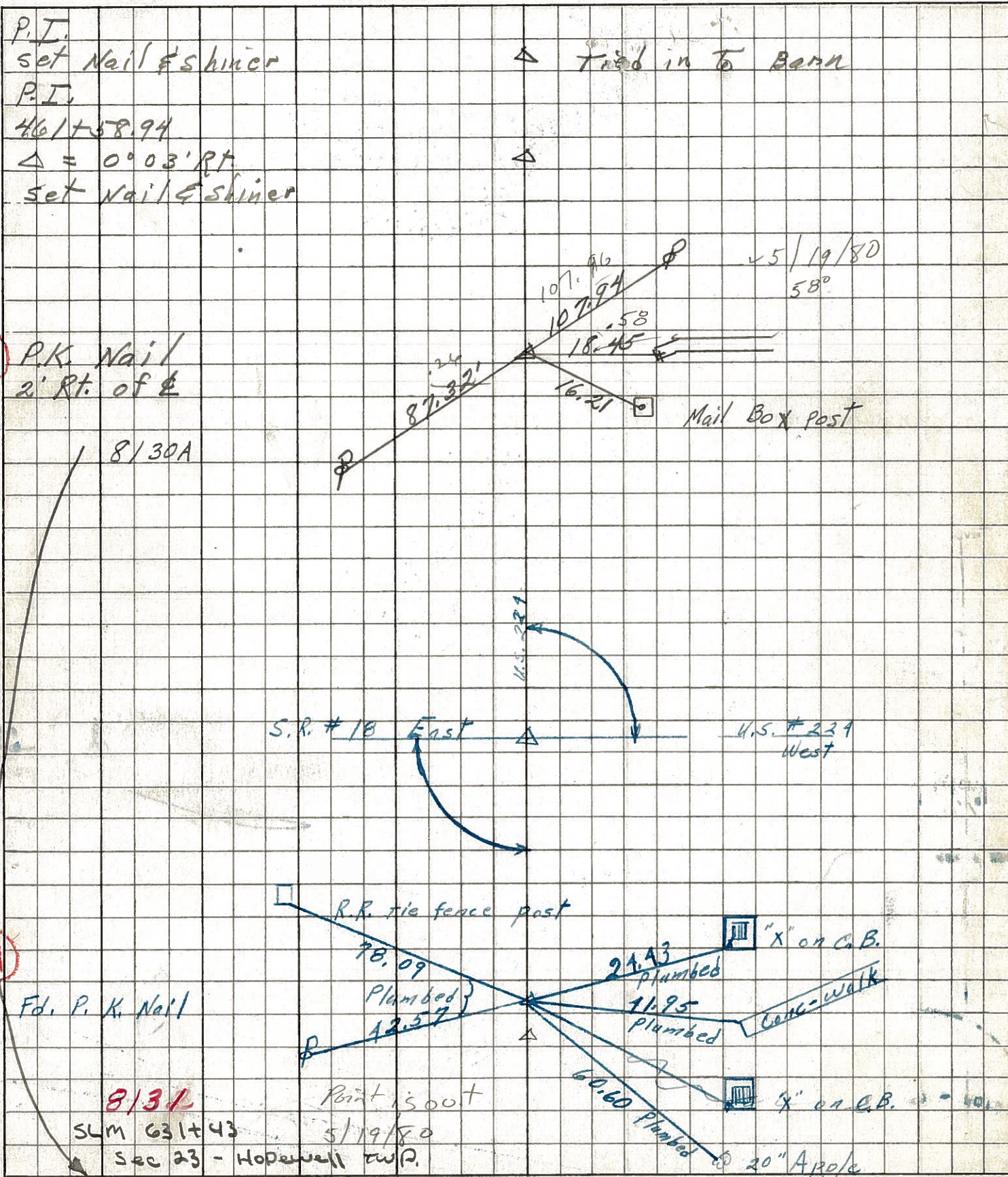
SET P.K. NAIL \perp SH.



PERSONNEL	TITLE	PERSONNEL	TITLE
Schneider			
Barbour			
Redding			
Potts			

COUNTY Seneca DATE 10-29-68
 S. R. 18 WEATHER Fair-Cold
 SEC. Bascon to Tiffin TEMP. 35°

DESCRIPTION Ties for Control Points JOB NO. _____
 LEFT CENTER LINE RIGHT



42

42A