

O.D.O.T. DISTRICT 2 SURVEY OFFICE (USE ONLY)

PERSONNEL

REFERENCE NO. 42 A

SHEET 1 OF 18

NOTES VAN DUSEN

DATE 6/4/01

ROUTE SR 18

H.C. ROUSOS

WEATHER SUNNY

COUNTY SENECA

R.C. BROWN

TEMP. 60°

TOWNSHIP HOPEWELL

SECTION 23

DWG BY NIESE

PID _____

T 2 N R 14 E

TYPE MONUMENT P.K./WASHER

ON SURFACE - ~~BELOW~~ ON

OFFSET \varnothing PAVEMENT ON LT : RT

11.5' TO LT EDGE PAVEMENT

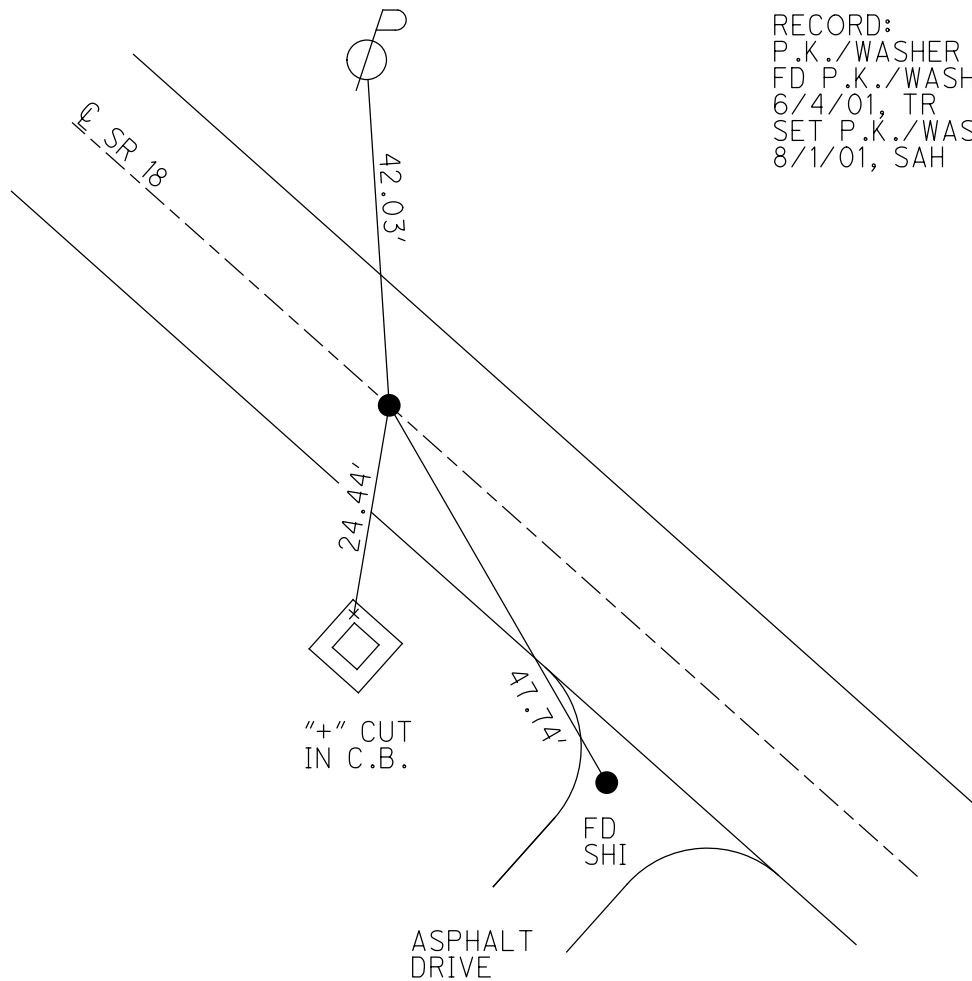
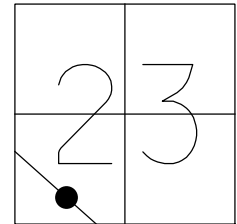
STATION: 631+52

HORIZ.DATUM: _____

GEOID: _____

GRID: NORTHING: _____

EASTING: _____



RECORD:
P.K./WASHER
FD P.K./WASHER
6/4/01, TR
SET P.K./WASHER
8/1/01, SAH

O.D.O.T. DISTRICT 2 SURVEY OFFICE

PERSONNEL _____

REFERENCE NO. 42A

SHEET 26 OF 26

NOTES Van Rensen

H.C. Russos

R.C. Brown

DATE 6-9-01

WEATHER Sunny

TEMP. 60°F

ROUTE 18

COUNTY Sheridan

TOWNSHIP Hopewell

SECTION 23

T 2 N R 14 E

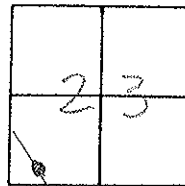
TYPE MONUMENT PK/W

ON SURFACE - ~~BELOW~~ Surface

~~LEFT~~ - C PART - ~~RIGHT~~ to Pavt.

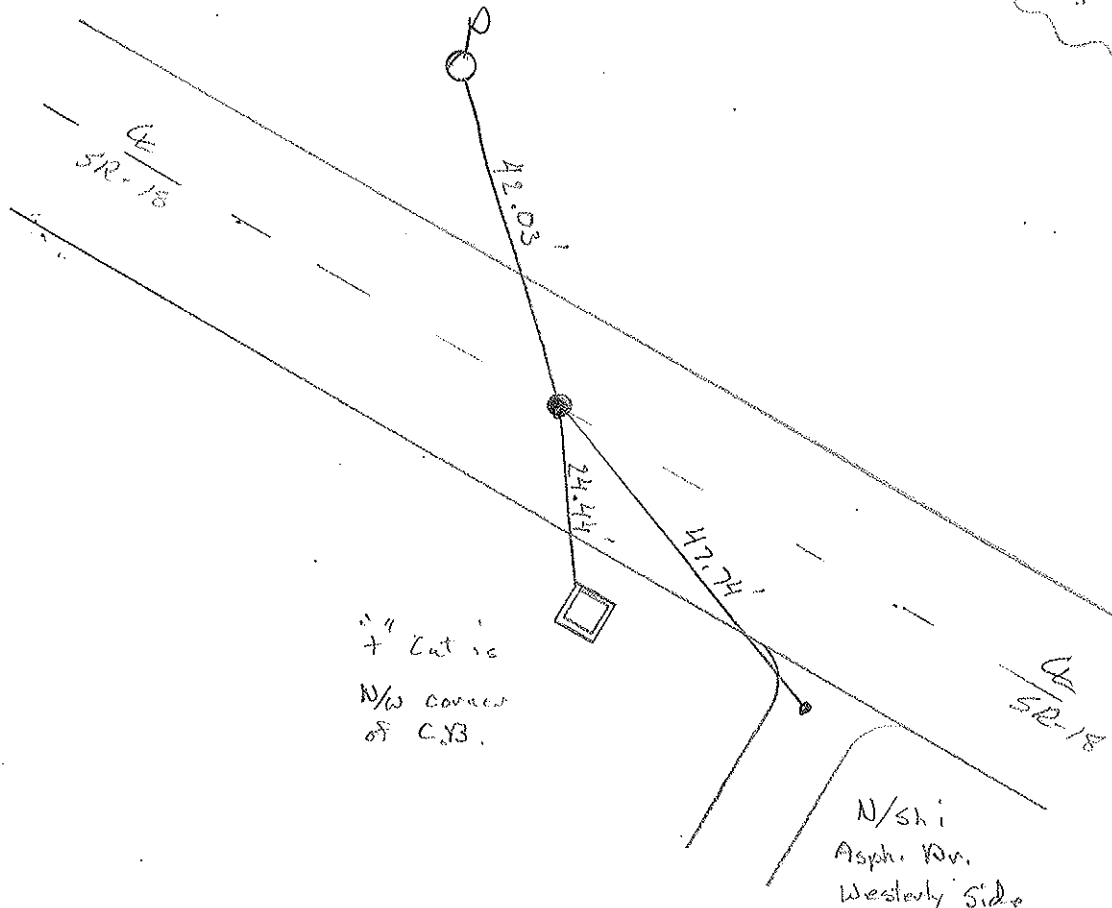
145' TO N EDGE PAVEMENT

S.L.M. 631 + 52



Record;
Prev. Mon. - PK/W

Sel PK/W
8-1-01
SAH



1" Lat is
+ Lat is
N/W corner
of C.B.

N/sh i
Asph. Pk.
Westly Side

O.D.O.T. DISTRICT 2 SURVEY OFFICE

PERSONNEL

REFERENCE NO. 43

SHEET 26 OF 27

NOTES CHENEY

H.C. RIPPLE

R.C. BARBOUR

GEYMAN

DATE 11-5-1991

WEATHER PARTLY CLOUDY

TEMP. 30°

ROUTE 18

COUNTY SENECA

TOWNSHIP HOPEWELL

SECTION 23

T 2 N R 14 E

TYPE MONUMENT SET PK/WASHER

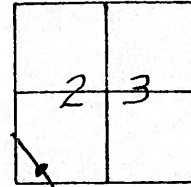
ON SURFACE - ~~BELOW~~

~~LEFT~~ - & PAV'T. - ~~RIGHT~~

11.5' TO N. EDGE PAVEMENT

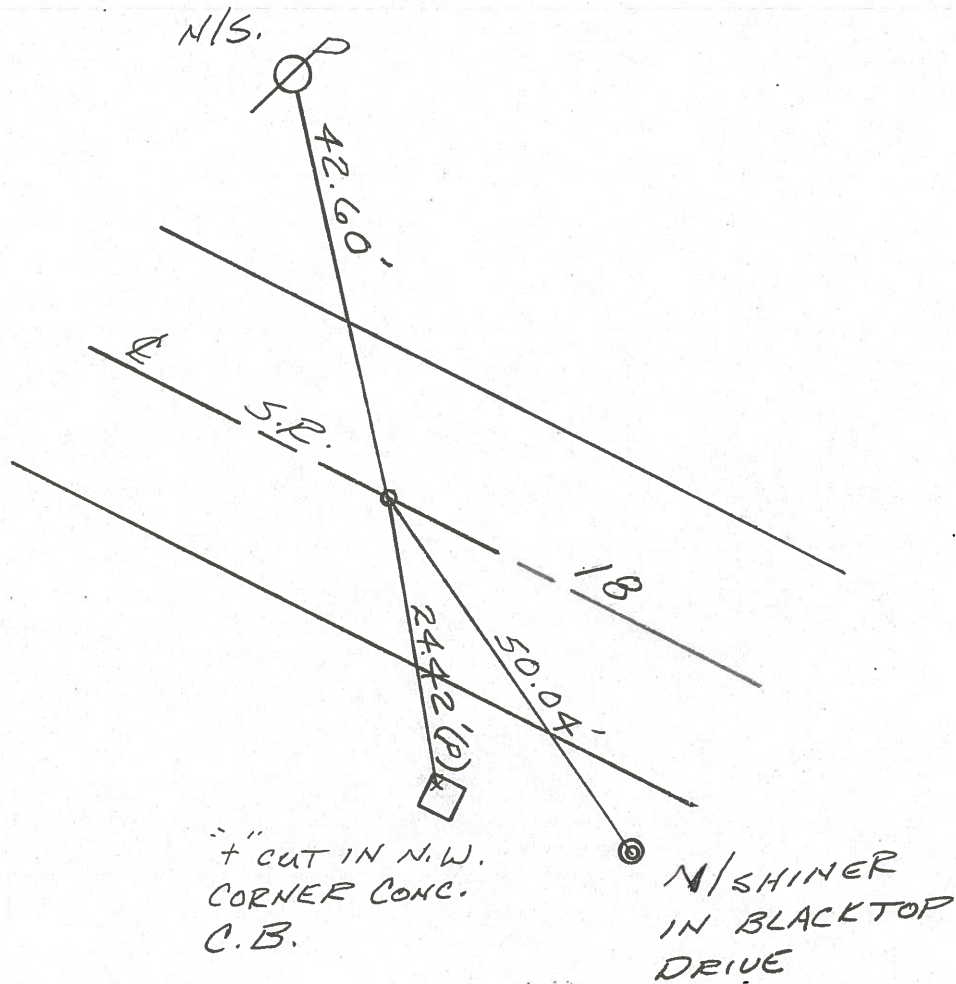
S.L.M. 631+43

42-A



PREVIOUS MONUMENT:

PK. NAIL



PERSONNEL TITLE PERSONNEL TITLE

COUNTY Seneca DATE 10-29-68

Schneider

Barbour

Redding

Potts

S. R. 18

WEATHER Fair - Cold

SEC. Bascon to Tiffin

TEMP. 35°

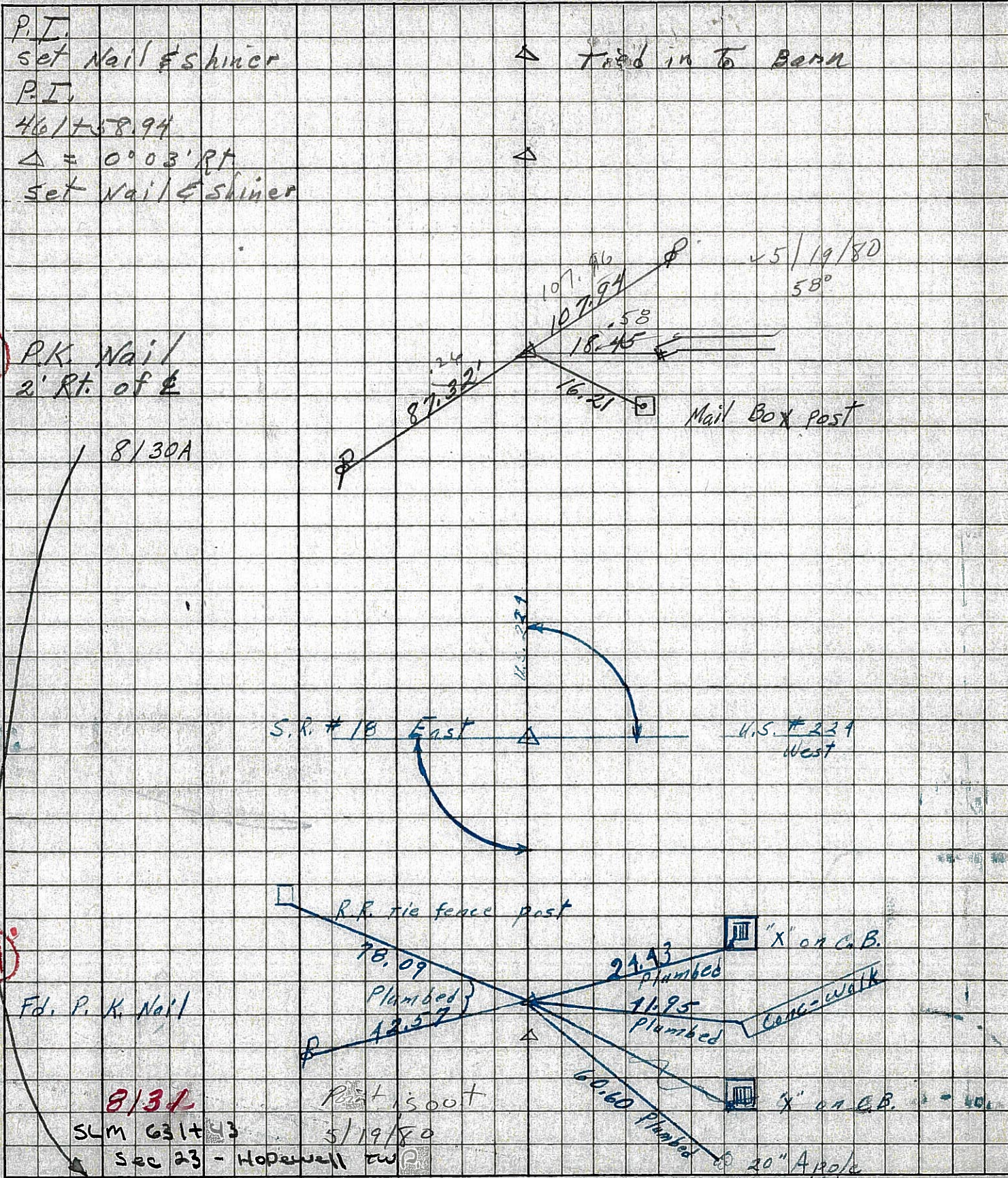
DESCRIPTION Ties for Control Points

JOB NO.

LEFT

CENTER LINE

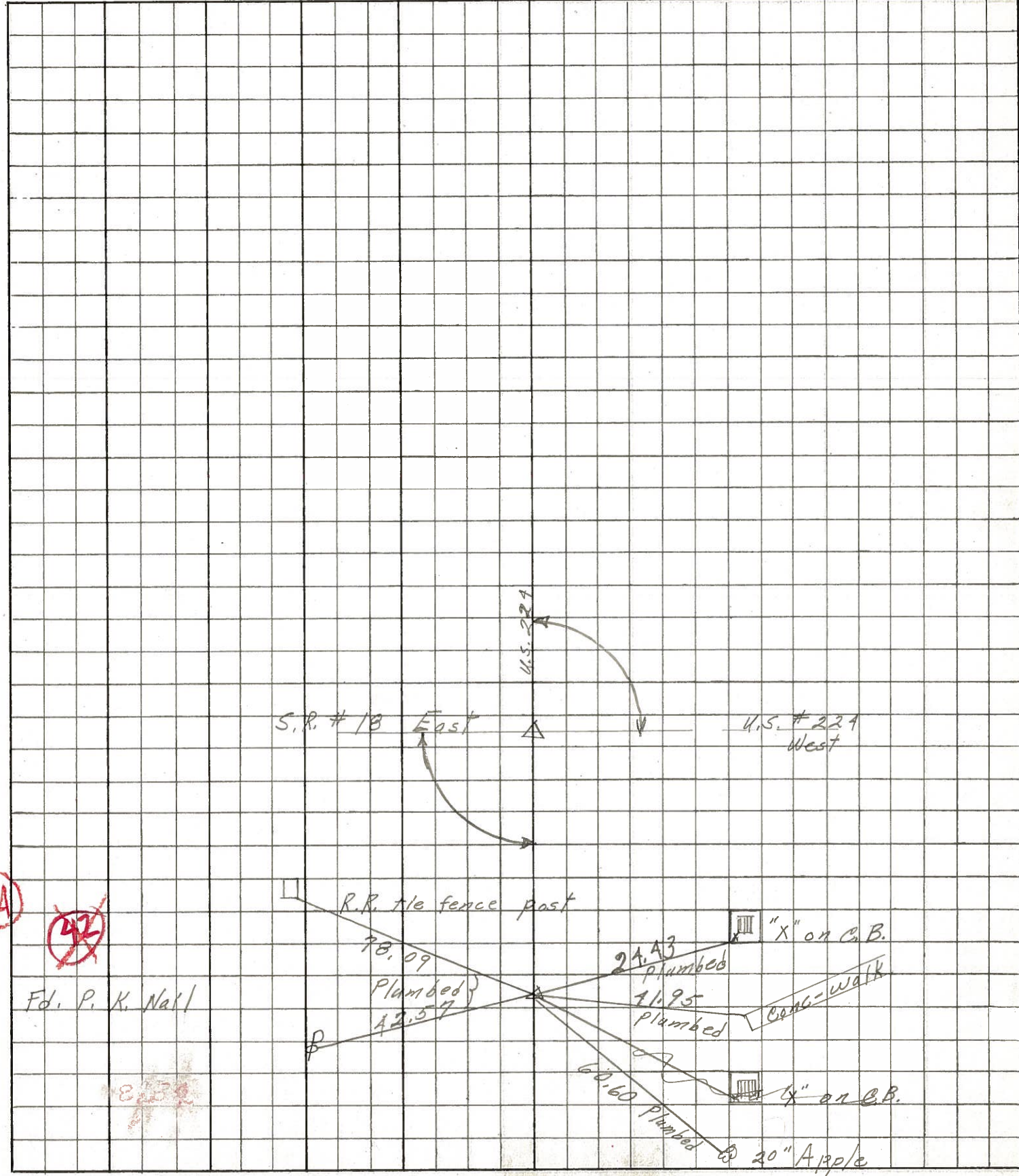
RIGHT



PERSONNEL	TITLE	PERSONNEL	TITLE	COUNTY	DATE	WEATHER	TEMP.
Schneider				Seneca	10-29-68	Fair-cold	35°
Barbour				S. R. 18			
Redding				SEC. Boscon to Tiffin			
Potts							

DESCRIPTION Ties for Control Points JOB NO. _____

LEFT CENTER LINE RIGHT



42A

~~42~~

8.31