

O.D.O.T. DISTRICT 2 SURVEY OFFICE (USE ONLY)

PERSONNEL

REFERENCE NO. 42 B

SHEET 2 OF 18

NOTES ASTON

DATE 9/14/23

ROUTE SR 18

H.C. NIESE

WEATHER SUNNY

COUNTY SENECA

R.C. ASTON

TEMP. 70°

TOWNSHIP HOPEWELL

DWG BY RHOADES PID R/W

SECTION 26

T 2 N R 14 E

TYPE MONUMENT MON BOX W/ 1" IPIN

ON SURFACE - ~~BELOW~~ ON

OFFSET CL PAVEMENT ON LT : RT

- TO - EDGE PAVEMENT

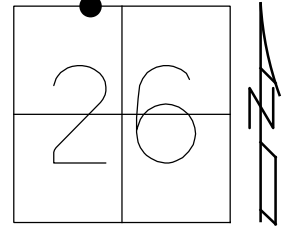
STATION: 638+35

HORZ. DATUM: NAD83 (2011)

GEOID: NAVD88 2018

GRID: NORTHING: 526252.172

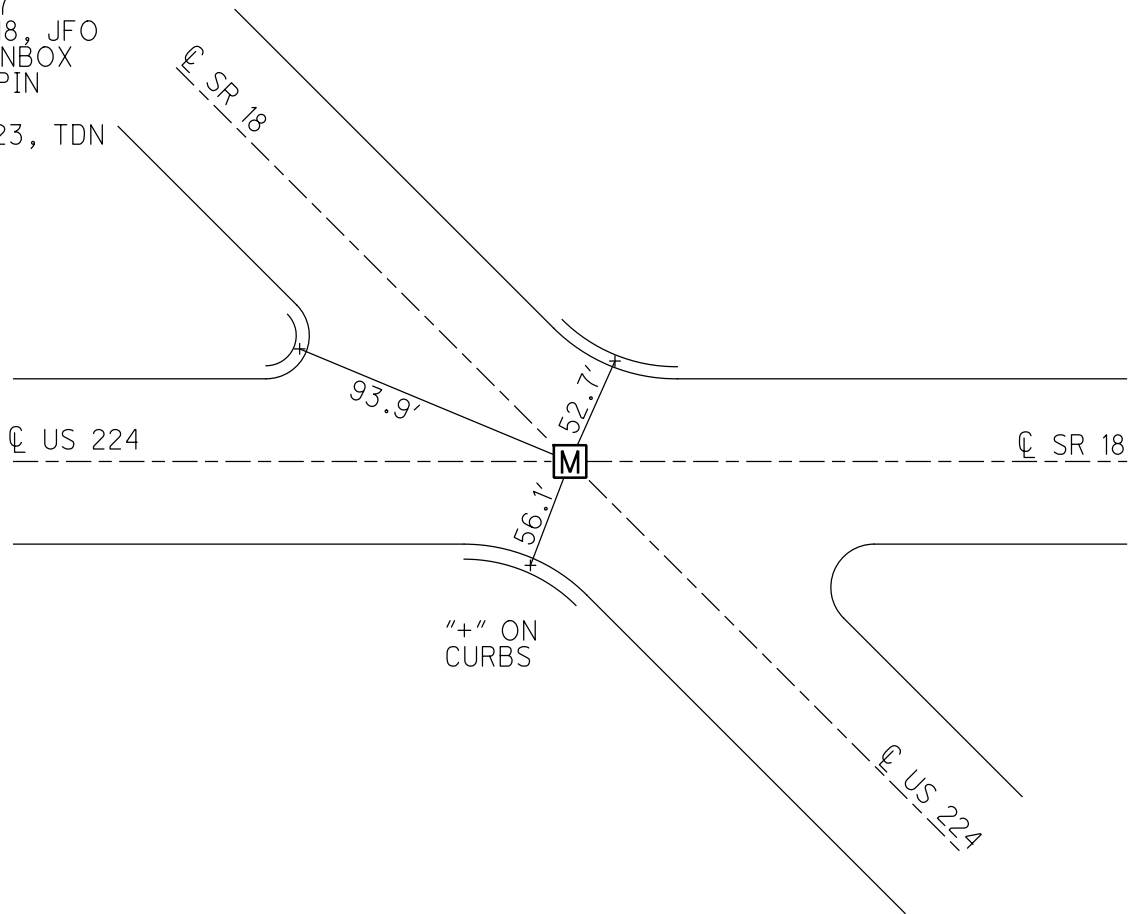
EASTING: 1769858.373



RECORD: P.I.
FD MONBOX
11/5/91, CHENEY
FD MONBOX
W/ 1" IPIN
REF37
6-13-17
12-17-18, JFO
FD MONBOX
W/1" IPIN
REF37
9/14/23, TDN

NOTE: REF 37 SR 224

SENECA LDP:
N: 294888.904
E: 144511.264



O.D.O.T. DISTRICT 2 SURVEY OFFICE (USE ONLY)

PERSONNEL

REFERENCE NO. 42 B

SHEET 2 OF 18

NOTES CHENEY DATE 11/5/91
H.C. RIPPLE WEATHER SUNNY
R.C. BARBOUR TEMP. 34°
GEYMAN

ROUTE SR 18
COUNTY SENECA
TOWNSHIP HOPEWELL
SECTION 26

DWG BY MILLER PID 102819

T 2 N R 14 E

TYPE MONUMENT MONBOX W/ 1" IPIN

ON SURFACE - ~~BELOW~~ ON

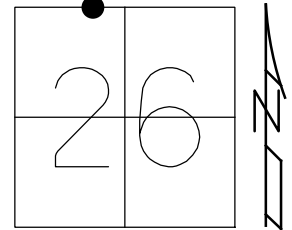
OFFSET Q PAVEMENT ON LT : RT

- TO - EDGE PAVEMENT

STATION: 638+35

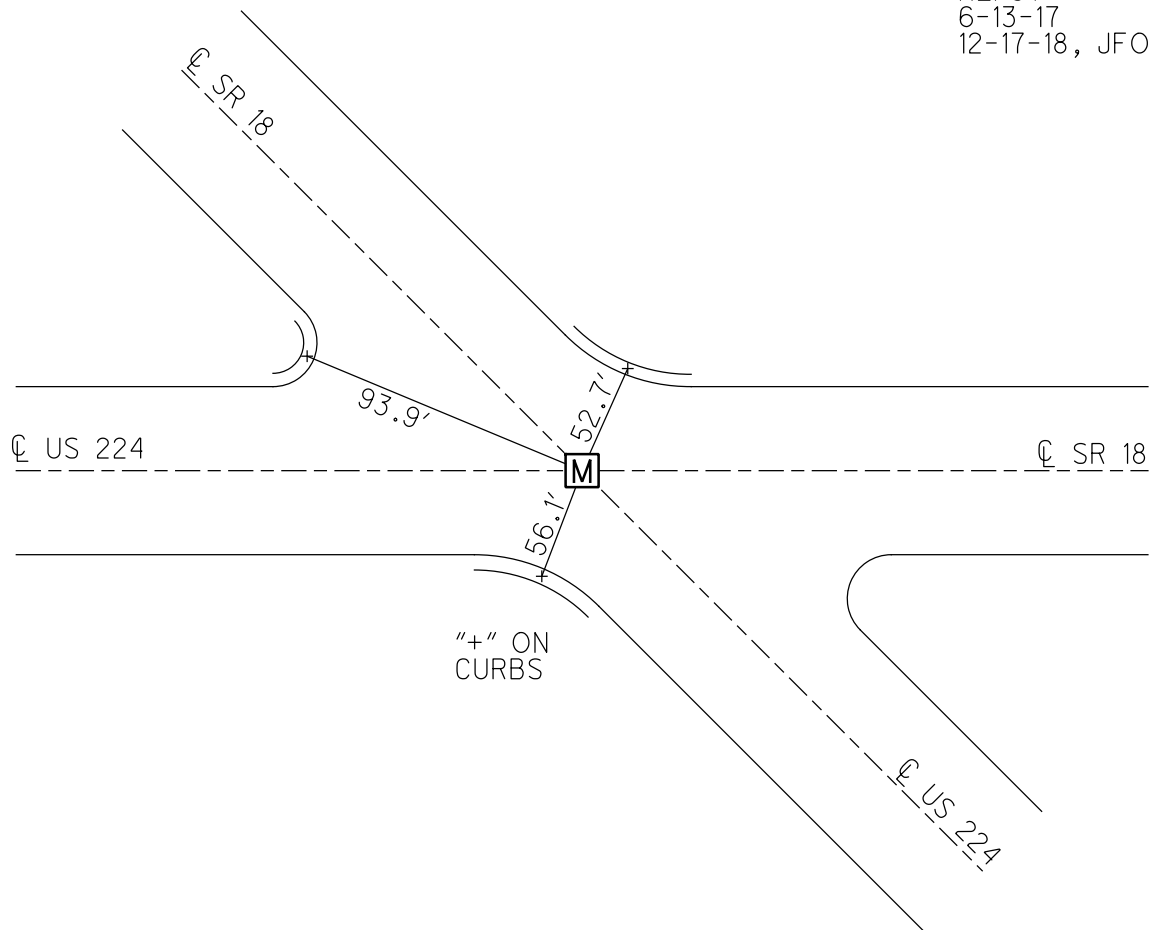
HORZ.DATUM: NAD83 (2011) GEOID: 2012A

GRID: NORTHING: 526252.172 EASTING: 1769858.373



NOTE: REF 37 SR 224

RECORD: P.I.
FD MONBOX
11/5/91, CHENEY
FD MONBOX
W/ 1" IPIN
REF37
6-13-17
12-17-18, JFO



O.D.O.T. DISTRICT 2 SURVEY OFFICE

PERSONNEL

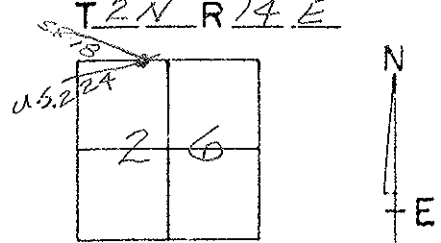
REFERENCE NO. 42-B SHEET 27 OF 27
37 ON 05 22 4

NOTES CHENEY
H.C. RIPPLE
R.C. BARBOUR
GEYMAN

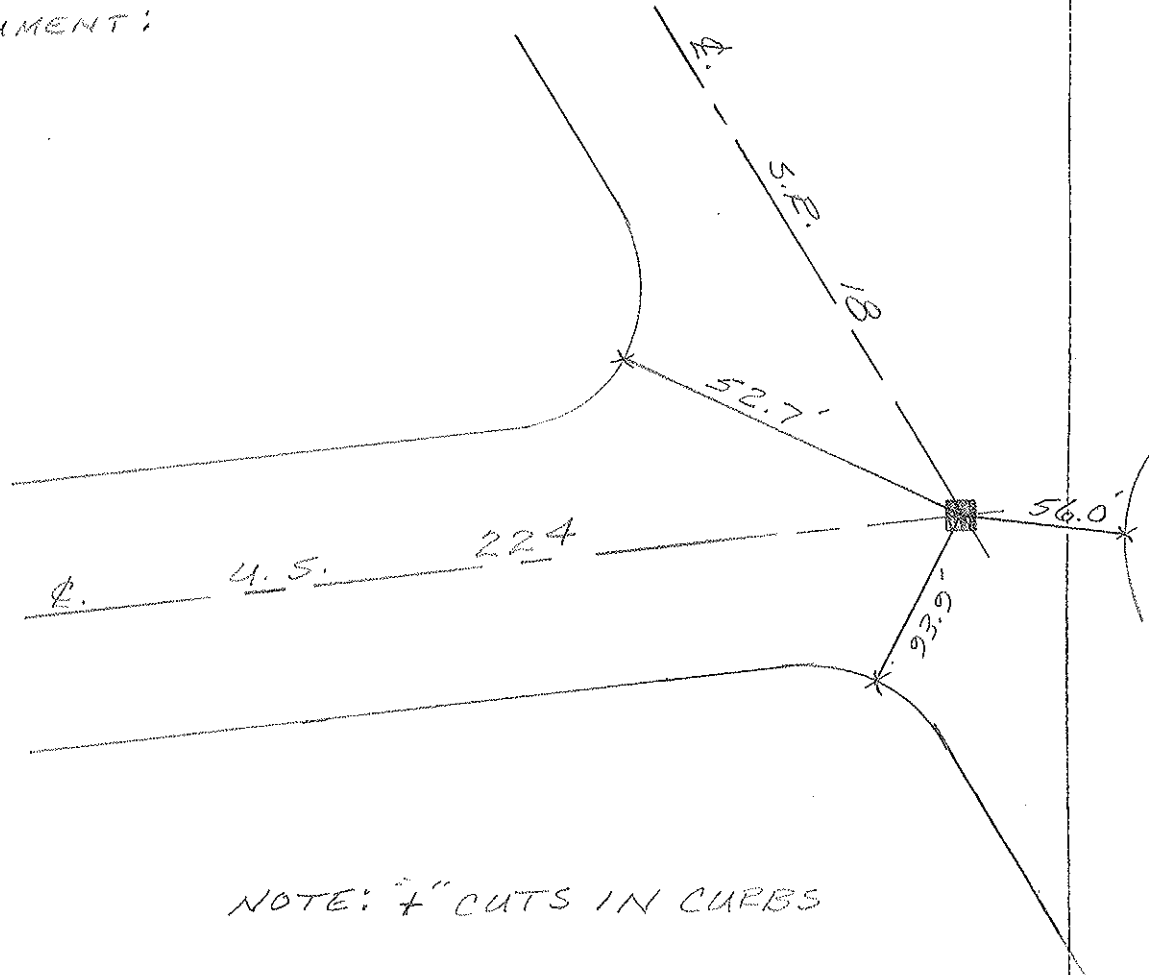
DATE 11-5-1991
WEATHER PARTLY CLOUDY
TEMP. 30°

ROUTE 18
COUNTY SENECA
TOWNSHIP HOPEWELL
SECTION 26
T 2 N R 14 E

TYPE MONUMENT MONUMENT BOX
ON SURFACE - BELOW
LEFT- & PAV'T. - RIGHT "+" ROADS
— TO — EDGE PAVEMENT
S.L.M. 638+50±



PREVIOUS MONUMENT:
PK/WASHER



NOTE: "+" CUTS IN CURBS

County Seneca - S.E. #224 & 18

Township Hopewell

Section 26

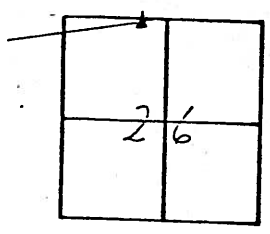
T2N, R14E

Personnel Cronin
Ripple
Schneider
Mosser
Barbour

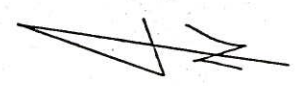
Date 12/13/79

Weather overcast

Temp. 31°



42-B



20' x 00'
 'K E' washer on
 surface

