

O.D.O.T. DISTRICT 2 SURVEY OFFICE (USE ONLY)

PERSONNEL

REFERENCE NO. 43

SHEET 3 OF 18

NOTES CRONIN DATE 12/13/79
 H.C. RIPPLE WEATHER OVERCAST
 R.C. SCHNEIDER TEMP. 33°
MOSSER/BARBOUR

ROUTE SR 18
 COUNTY SENECA
 TOWNSHIP HOPEWELL
 SECTION 23

DWG BY NIESE PID _____

T 2 N R 14 E

TYPE MONUMENT P.K./WASHER

ON SURFACE - ~~BELOW~~ ON

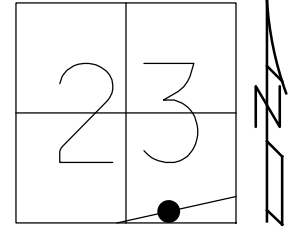
OFFSET ☐ PAVEMENT ON LT : RT

- TO - EDGE PAVEMENT

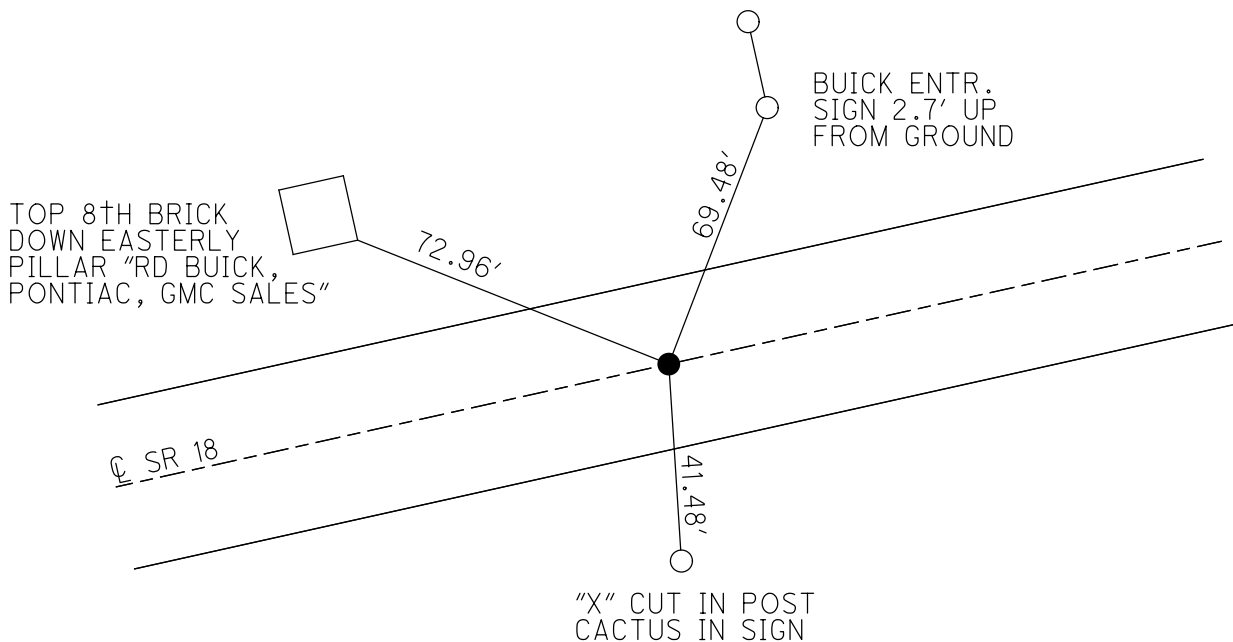
STATION: 642+57

HORZ. DATUM: _____ GEOID: _____

GRID: NORTHING: _____ EASTING: _____



RECORD: P.I.
 $\Delta = 00^\circ 57' 00''$ LT
 STA 24+61.60
 FD P.K./WASHER
 12/13/79, CRONIN



County Seneca - S.R. #18

Date 12/13/79

Township Hopewell

Weather overcast

Section 23

Temp. 33°

T2N, R14E

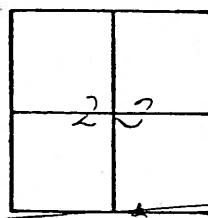
Personnel Cronin

Ripple

Schneider

Hosser

Barbour



43

Buick Entrance sign
2.7' up from ground

69.48'

S.R. #18

41.48'

'x' cut in post
of cactus in sign.

72.94'

top of 8th
brick down
Easterly Pillar
R.D. Buick-Pontiac
GMC Sales Inc.

P.I. $\Delta = 00^{\circ} 57' \text{ Lt.}$

24+58.22 Bk. =

24+61.60 Ahd

P.K. ϵ Washer on surface

