

O.D.O.T. DISTRICT 2 SURVEY OFFICE (USE ONLY)

PERSONNEL

REFERENCE NO. 49

SHEET 3 OF 12

NOTES CHENEY

DATE 6-30-1993

ROUTE SR 18

H.C. RIPPLE

WEATHER CLOUDY

COUNTY SENECA

R.C. GEYMAN

TEMP. 75°

TOWNSHIP CLINTON

SECTION 20

DWG BY AUBLE

PID 107060

T 2 N R 15 E

TYPE MONUMENT 1.25" IPIPE

~~ON SURFACE~~ - BELOW 5"

OFFSET \varnothing PAVEMENT 1.5' ~~LT~~ : RT

15.5' TO LT EDGE PAVEMENT

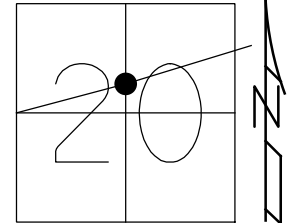
STATION: 814+25

HORIZ.DATUM: -

GEOID: -

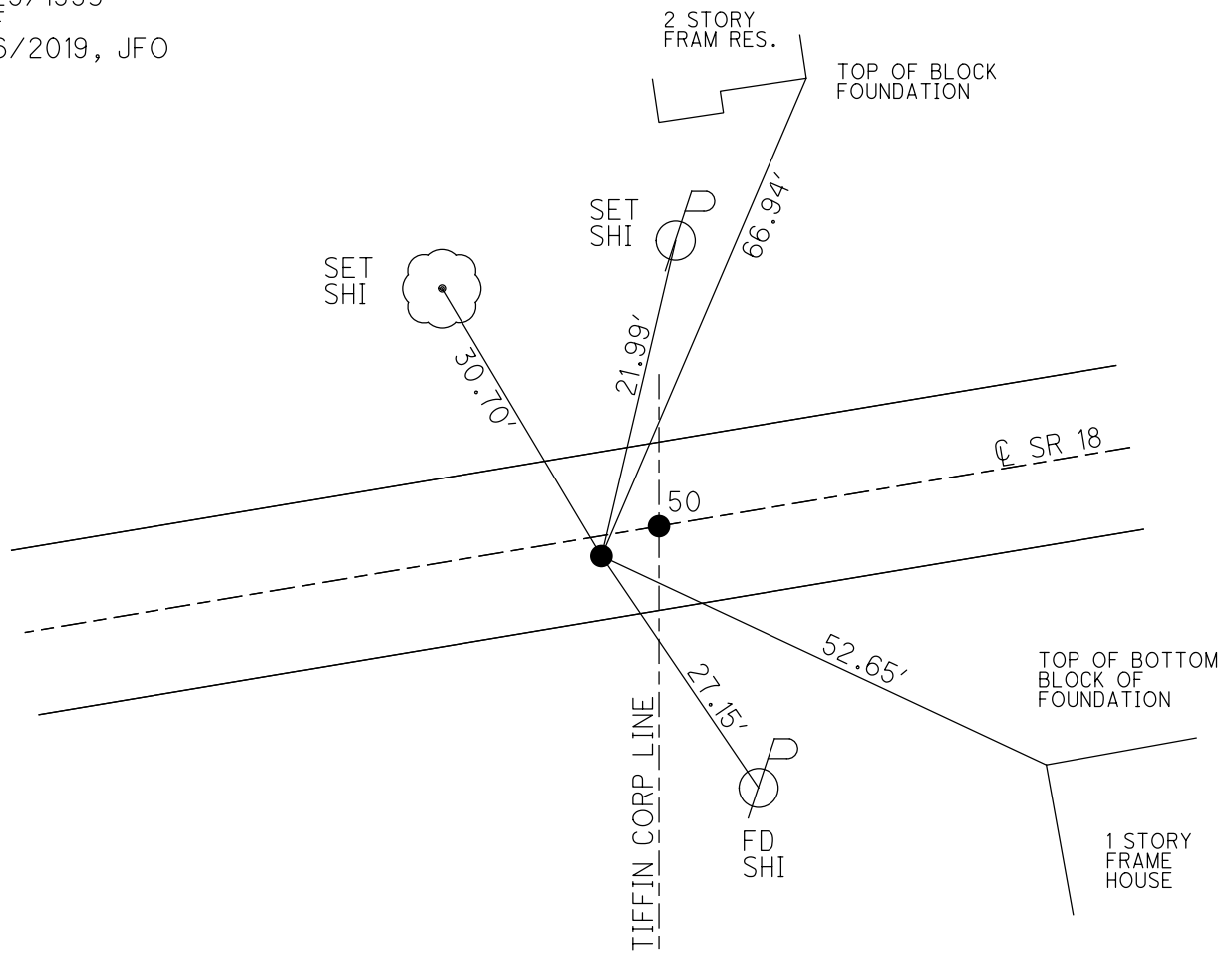
GRID: NORTHING: -

EASTING: -



RECORD:
ORIGIN UNKNOWN
SET P.K./WASHER
8/25/1993
DNF
3/6/2019, JFO

DIST. 49-50= 1.75' REC



O.D.O.T. DISTRICT 2 SURVEY OFFICE

PERSONNEL

REFERENCE NO. 50

SHEET 1 OF 24

NOTES CHENEY

H.C. RIPPLE

DATE 6-30-1993

ROUTE #18

R.C. GEYMAN

WEATHER Cloudy

COUNTY SENECA

TEMP. 75°

TOWNSHIP CLINTON

SECTION 20

T 2 N R 15 E

TYPE MONUMENT

1/2" MINE SPK. - HEAD BROKEN OFF

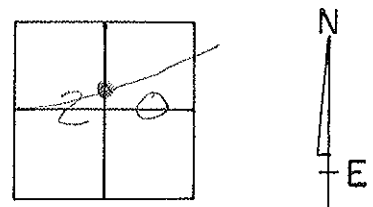
~~ON SURFACE~~ - BELOW A" = 3" ±, B" = 5" ±

B" = 1.25" PIPE

LEFT - Q PAU'T. - RIGHT A" = 0.0 ±, B" = 1.5' RT.

A" = 1.4', B" = 15.5' TO LT. EDGE PAVEMENT

S.L.M. 814+25



RECORDED: 3-18-1976 ^{PT. "A"}

TIFFIN CORP. STA. 0+00

FD. SMALL RR. SPK.

1.5" DOWN

SET PK/WASHER (9-7-76)

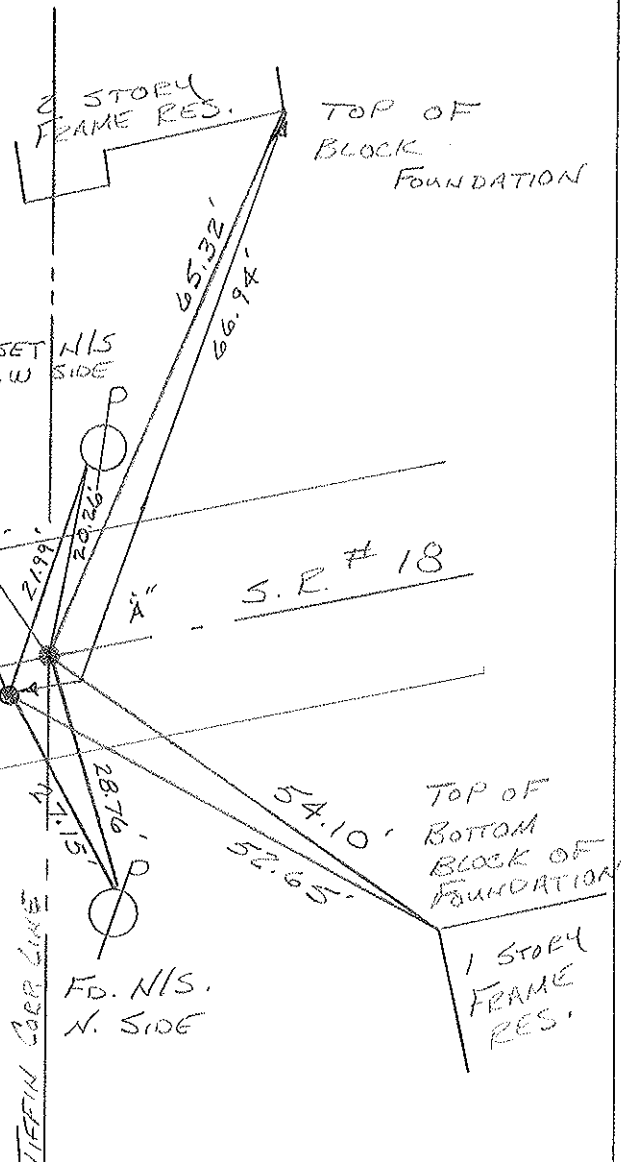
SET PK.'s/WASHERS

8-25-1993

RCC

SET NIS. S. SIDE

SET NIS S.W. SIDE



PT. "B"

PIPE IS 1.75' S.W. OF MINE SPK. (ORIGIN UNKNOWN)