

O.D.O.T. DISTRICT 2 SURVEY OFFICE (USE ONLY)

PERSONNEL

REFERENCE NO. 50

SHEET 2 OF 12

NOTES CHENEY

DATE 6-30-1993

ROUTE SR 18

H.C. RIPPLE

WEATHER CLOUDY

COUNTY SENECA

R.C. GEYMAN

TEMP. 75°

TOWNSHIP CLINTON

DWG BY AUBLE

PID 107060

SECTION 20

T 2 N R 15 E

TYPE MONUMENT MINE SPIKE SHANK

~~ON SURFACE~~ - BELOW 3"

OFFSET ☉ PAVEMENT ON LT : RT

14' TO LT EDGE PAVEMENT

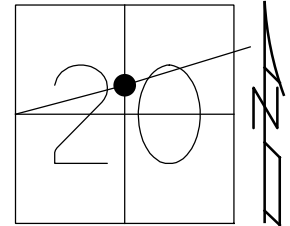
STATION: 814+25

HORZ. DATUM: -

GEOID: -

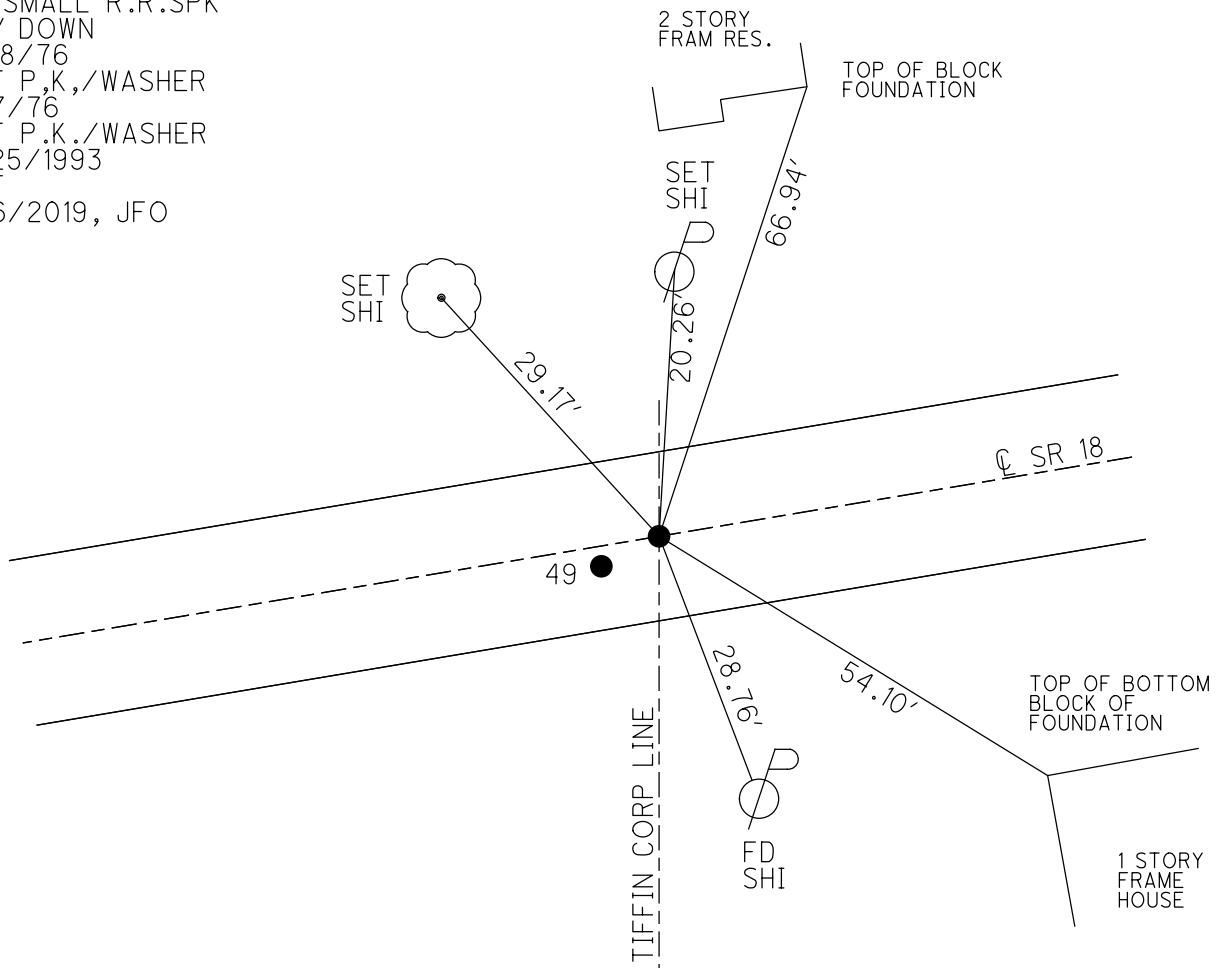
GRID: NORTHING: -

EASTING: -



RECORD:  
 TIFFIN CORP.  
 STA. 0+00  
 FD SMALL R.R. SPK  
 1.5" DOWN  
 3/18/76  
 SET P.K./WASHER  
 9/7/76  
 SET P.K./WASHER  
 8/25/1993  
 DNF  
 3/6/2019, JFO

DIST. 49-50 = 1.75' REC



# O.D.O.T. DISTRICT 2 SURVEY OFFICE

PERSONNEL

REFERENCE NO. 50

SHEET 1 OF 24

NOTES CHENEY

H.C. RIPPLE

DATE 6-30-1993

ROUTE #18

R.C. GEYMAN

WEATHER Cloudy

COUNTY SENECA

TEMP. 75°

TOWNSHIP CLINTON

SECTION 20

T 2 N R 15 E

TYPE MONUMENT

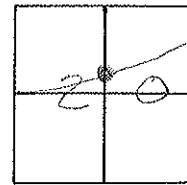
1/2" MINE SPK. - HEAD BROKEN OFF

~~ON SURFACE~~ - BELOW A" = 3" ±, B" = 5" ±

B" = 1.25" PIPE

A" = 14', B" = 15.5' TO LT. EDGE PAVEMENT

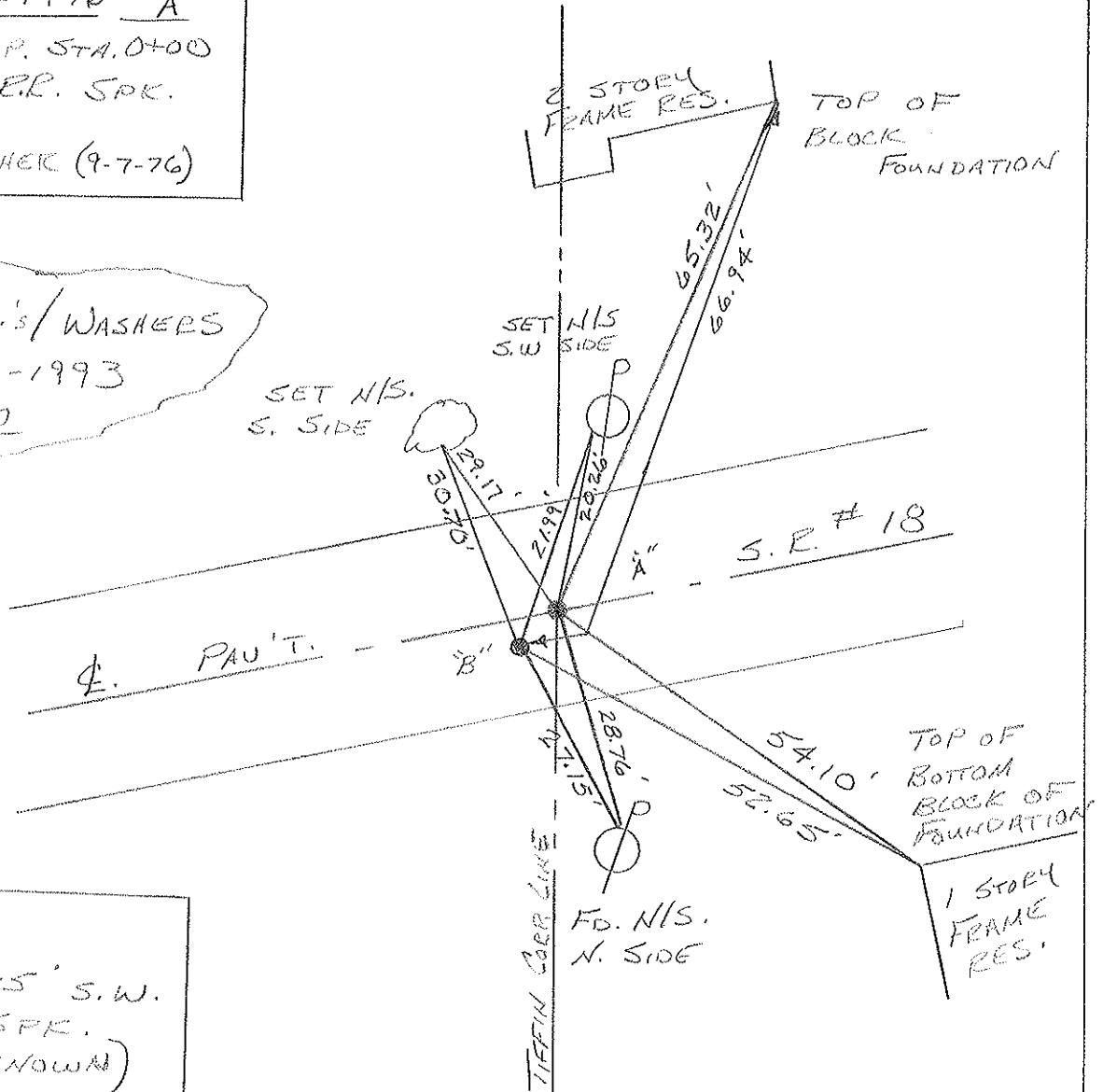
S.L.M. 814+25



RECORDED: 3-18-1976 <sup>PT. "A"</sup>

TIFFIN CORP. STA. 0+00  
FD. SMALL RR. SPK.  
1.5" DOWN  
SET PK/WASHER (9-7-76)

SET PK.'s/WASHERS  
8-25-1993  
RCC



PT. "B"  
PIPE IS 1.75' S.W.  
OF MINE SPK.  
(ORIGIN UNKNOWN)

# Resurfaced 1993

SHEET NO. 1

| PERSONNEL | TITLE | PERSONNEL | TITLE |
|-----------|-------|-----------|-------|
| Ash       |       |           |       |
| Cronin    |       |           |       |
| Ripple    |       |           |       |
| Anderson  |       |           |       |

COUNTY Seneca

drawn 1/27/72

DATE checked 6/9/71

S. R. # 18 (S.H. 449)

WEATHER

SEC. K

TEMP.

DESCRIPTION Ties for Control Points - Tiffin to Republic

JOB NO.

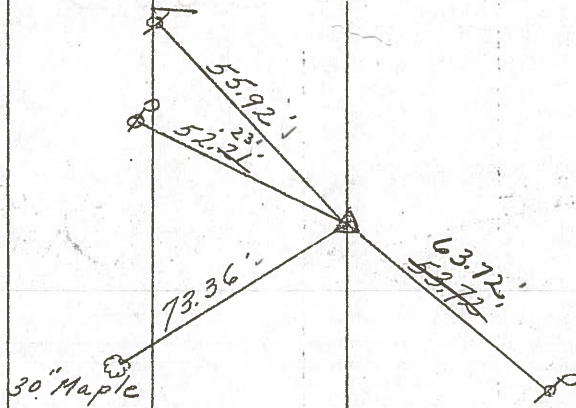
LEFT

CENTER LINE

RIGHT

(51)

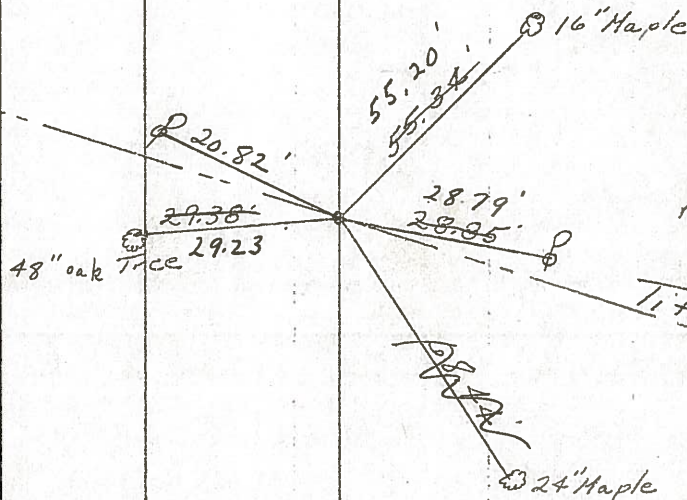
P.I.  
 $\Delta = 0^{\circ} 05' Rt.$   
 15+00  
 Fd. nail & shiner  $1\frac{1}{2}$ "  
 below surface  
 \* Not set by State



Tied 6/9/71  
 retied 3/18/76  
 Temp 30°  
 Reset P.K. Nail & washer  
 9/7/76

(50)

0+00  
 Tiffin Corp.  
 Fd. small P.R. Spk.  $1\frac{1}{2}$ "  
 top of surface  
 below



Tied 6/9/71  
 retied 3/18/76

Tiffin Corp. Line

Reset P.K. Nail & washer  
 9/7/76

PERSONNEL TITLE PERSONNEL TITLE

COUNTY Seneca

DATE checked 6/19/71

Ash

Cronin

Ripple

Anderson

S. R. #18 (S.H. 449)

WEATHER

SEC. K

TEMP.

DESCRIPTION Ties for Control Points - Tiffin to Republic

JOB NO.

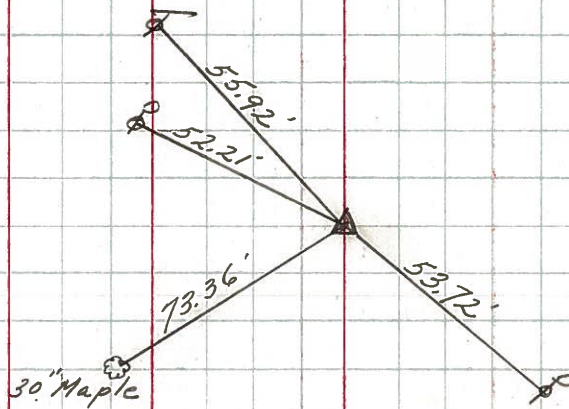
LEFT

CENTER LINE

RIGHT

51

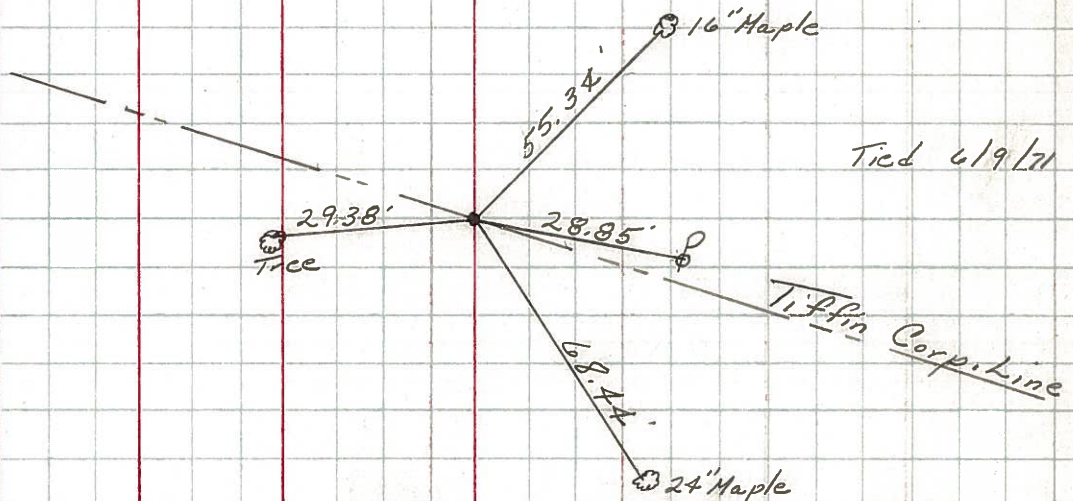
P.I.  
 $A = 0^{\circ}05' \text{ Rt.}$   
 15+00  
 Fd. nail/shiner  $1\frac{1}{2}''$   
 below surface  
 \* Not set by State



50

1

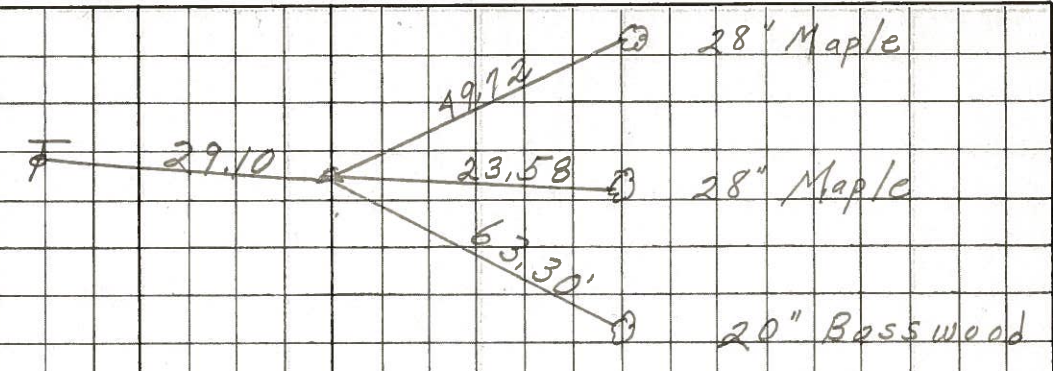
0+00  
 Tiffin Corp.  
 Fd. small R.R. Spike  
 top of surface



PERSONNEL TITLE PERSONNEL TITLE COUNTY Seneca DATE 10-25-68  
Schneider \_\_\_\_\_ Barbour \_\_\_\_\_  
Redding \_\_\_\_\_ Potts \_\_\_\_\_  
 S. R. 18 WEATHER Cloudy - Rain  
 SEC. Tiffin to Republic TEMP. 45°

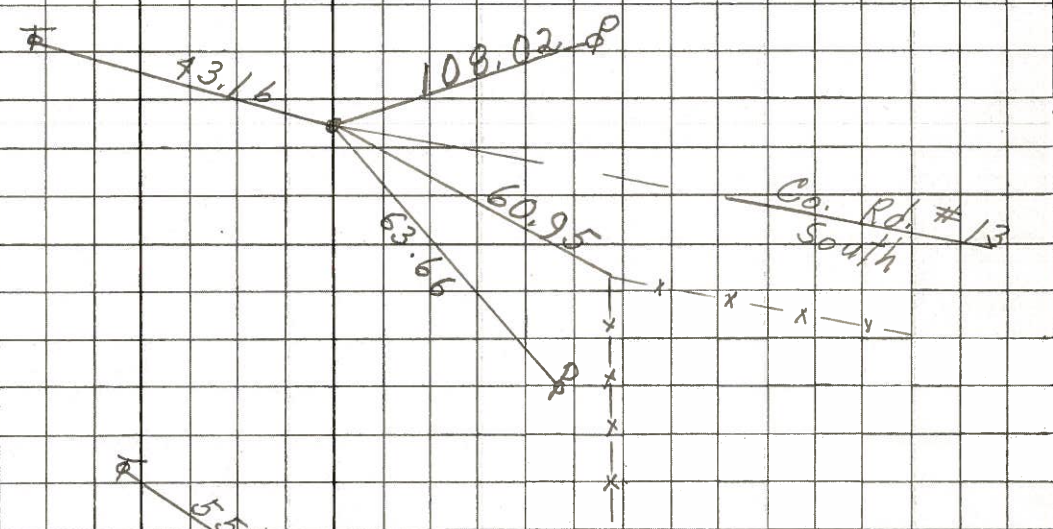
DESCRIPTION Ties for Control Points JOB NO. \_\_\_\_\_  
 LEFT CENTER LINE RIGHT

53 39+36.85  
 $\Delta = 19^{\circ}57' R$   
 Fd. P.K. Nail  
 on top



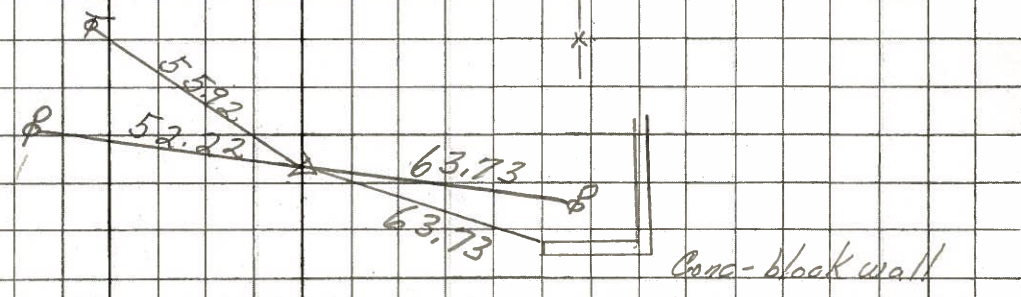
8143

52 Fd. R.R. spk.  
 on surface



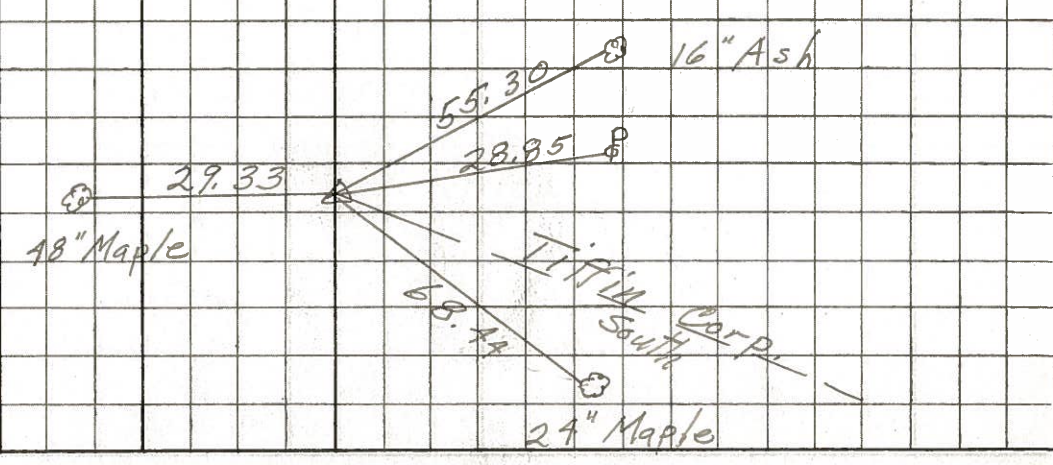
8142

51 15+00  
 $\Delta = 0^{\circ}05' R$   
 Fd. P.K. Nail  
 2" down



8141

50 0+00  
 Tiffin Corp.  
 Fd. small R.R. spk.  
 2" down



8140

