

O.D.O.T. DISTRICT 2 SURVEY OFFICE (USE ONLY)

PERSONNEL

REFERENCE NO. 50 A

SHEET 10 OF 18

NOTES RHOADES

DATE 9/8/21

ROUTE SR 18

H.C. AUBLE

WEATHER SUNNY

COUNTY SENECA

R.C. NIESE

TEMP. 73°

TOWNSHIP CLINTON

DWG BY RHOADES

PID PVTRAIN

SECTION 20

T 2 N R 15 E

TYPE MONUMENT P.K.SHANK/WASHER

ON SURFACE - ~~BELOW~~ ON

OFFSET 0.5' RT : RT

11' TO RT EDGE PAVEMENT

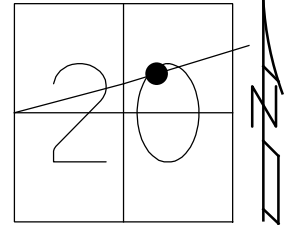
STATION: 823+54

HORIZ.DATUM: NAD83 (2011)

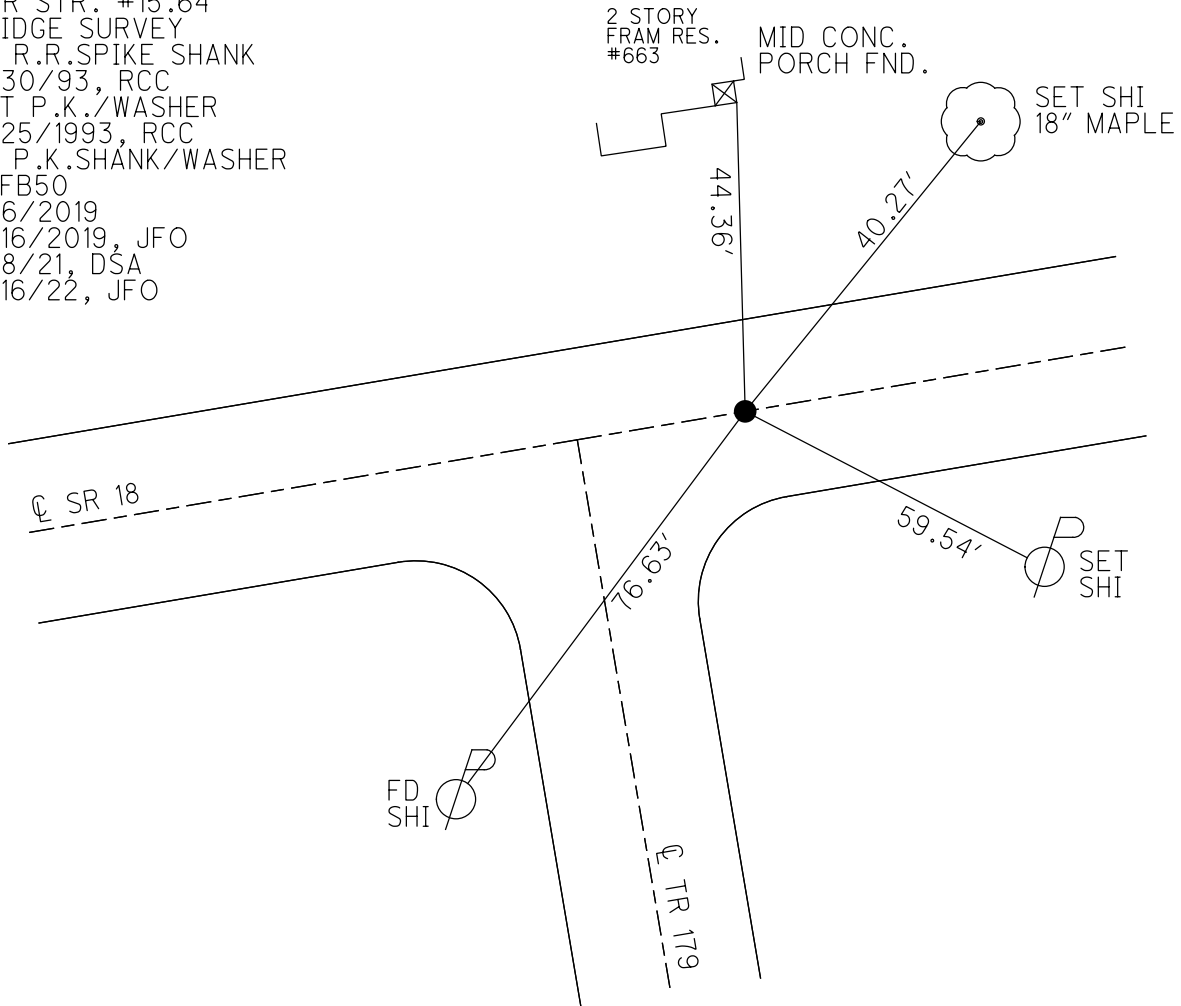
GEOID: 2012A

GRID: NORTHING: 530102.969

EASTING: 1787586.788



RECORD:
 @ SURVEY CONTROL
 FOR STR. #15.64
 BRIDGE SURVEY
 FD R.R.SPIKE SHANK
 6/30/93, RCC
 SET P.K./WASHER
 8/25/1993, RCC
 FD P.K.SHANK/WASHER
 REFB50
 3/6/2019
 8/16/2019, JFO
 9/8/21, DSA
 2/16/22, JFO



O.D.O.T. DISTRICT 2 SURVEY OFFICE (USE ONLY)

PERSONNEL

REFERENCE NO. 50 A

SHEET 4 OF 12

NOTES CHENEY DATE 6-30-1993
 H.C. RIPPLE WEATHER CLOUDY
 R.C. GEYMAN TEMP. 75°

ROUTE SR 18
 COUNTY SENECA
 TOWNSHIP CLINTON
 SECTION 20

DWG BY AUBLE PID 107060

T 2 N R 15 E

TYPE MONUMENT R.R. SPK SHANK

ON SURFACE - ~~BELOW~~ ON

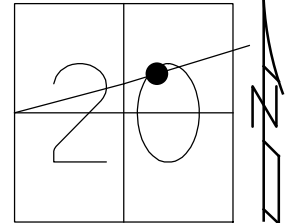
OFFSET 0.5' ± : RT

11' TO RT EDGE PAVEMENT

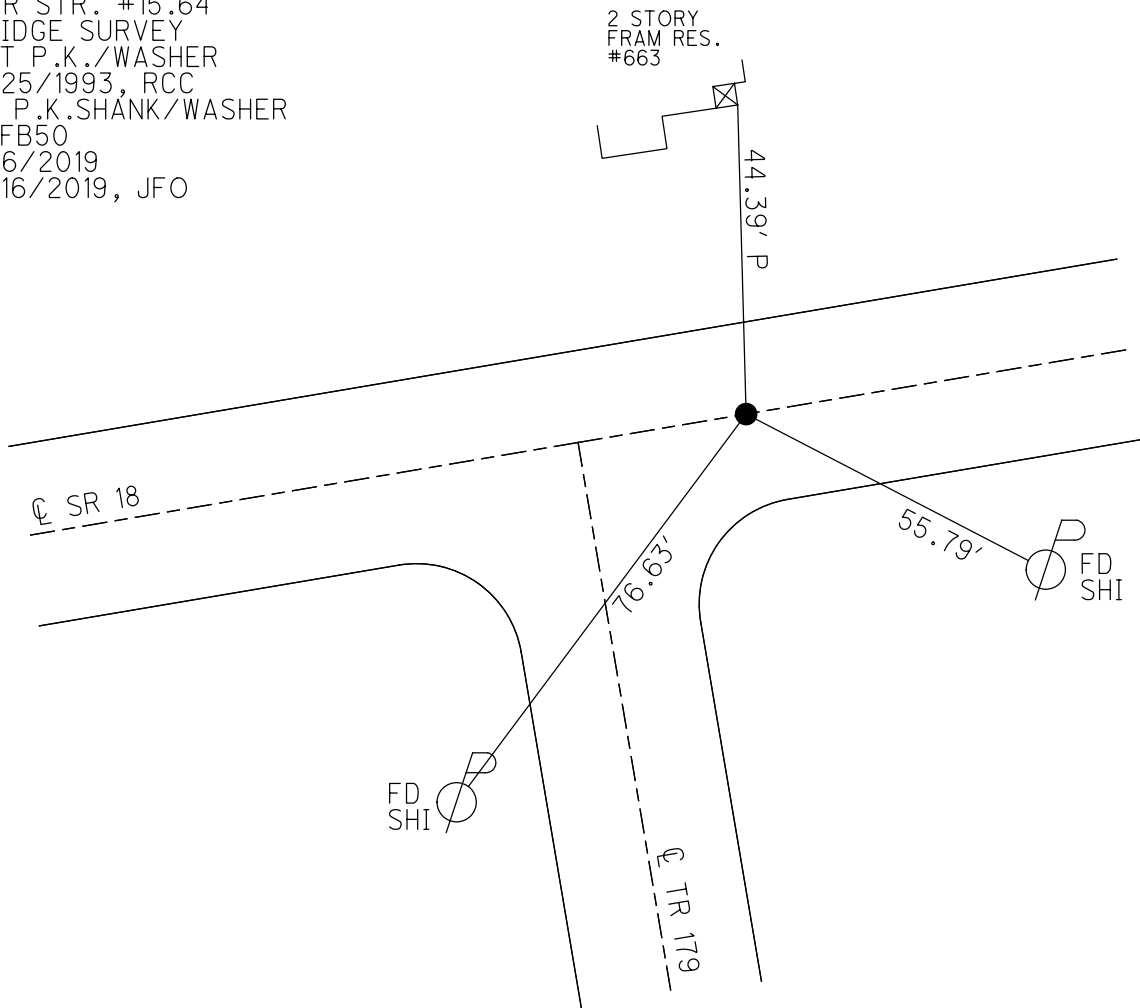
STATION: 823+54

HORZ. DATUM: NAD83 (2011) GEOID: 2012A

GRID: NORTHING: 530102.969 EASTING: 1787586.788



RECORD:
 C SURVEY CONTROL
 FOR STR. #15.64
 BRIDGE SURVEY
 SET P.K./WASHER
 8/25/1993, RCC
 FD P.K.SHANK/WASHER
 REFB50
 3/6/2019
 8/16/2019, JFO



O.D.O.T. DISTRICT 2 SURVEY OFFICE

PERSONNEL _____

REFERENCE NO. _____

SHEET 2 OF 24

NOTES CHENEY

H.C. RIAPLE

DATE 6-30-1993

ROUTE #18

R.C. GEYMAN

WEATHER CLOUDY

COUNTY SENECA

TEMP. 75°

TOWNSHIP CLINTON

SECTION 20

T 2 N R 15 E

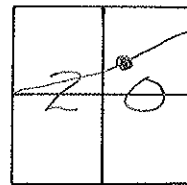
TYPE MONUMENT R.P. SPR. SHAFT

ON SURFACE - BELOW ON

PAV'T. - RIGHT 0.5'

11' TO R. EDGE PAVEMENT

S.L.M. 823+54



NOTE: (MAY NOT BE ON E. EDGE)
 C. OF SURVEY CONTROL
 FOR STR. # 15.64
 BRIDGE SURVEY

SET PK/WASHER
 8-25-1993
 REC

