

O.D.O.T. DISTRICT 2 SURVEY OFFICE (USE ONLY)

PERSONNEL

REFERENCE NO. 51

SHEET 11 OF 18

NOTES RHOADES

DATE 7/25/22

ROUTE SR 18

H.C. AUBLE

WEATHER CLEAR

COUNTY SENECA

R.C. NIESE

TEMP. 75°

TOWNSHIP CLINTON

WHITAKER

DWG BY WHITAKER

PID PVTRN

SECTION 20

T 2 N R 15 E

TYPE MONUMENT MAG/WASHER

ON SURFACE - ~~BELOW~~ ON

OFFSET Q PAVEMENT ON LT : RT

10.5' TO RT EDGE PAVEMENT

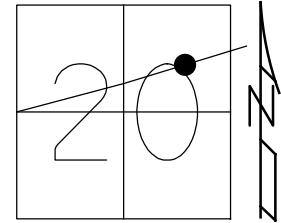
STATION: 829+28

HORZ. DATUM: NAD83 (2011)

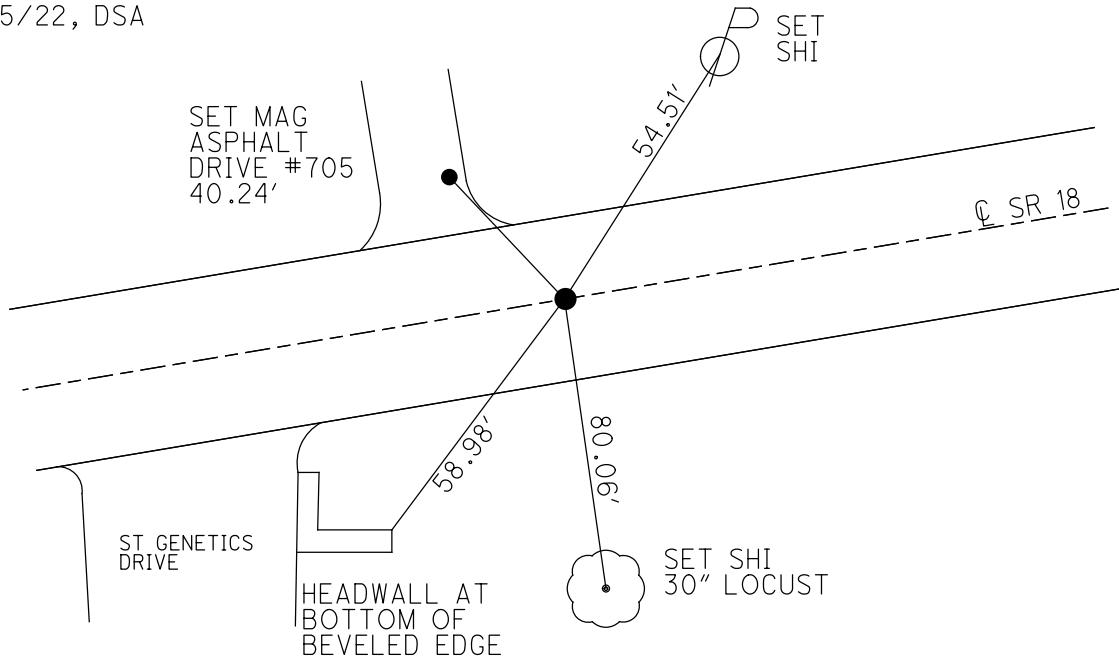
GEOID: 2012A

GRID: NORTHING: 530286.637

EASTING: 1788130.380



RECORD: P.I.
 STA 15+00
 $\Delta = 0^\circ 05' RT$
 FD NAIL/SHINER
 1.5" DOWN
 3/18/76
 SET P.K./WASHER
 9/7/76
 SET P.K./WASHER
 8/25/93, RCC
 FD HOLE REF51
 3/6/2019, JFO
 SET MAG/WASHER
 7/25/22, DSA



O.D.O.T. DISTRICT 2 SURVEY OFFICE (USE ONLY)

PERSONNEL

REFERENCE NO. 51

SHEET 5 OF 12

NOTES CHENEY

DATE 6-30-1993

ROUTE SR 18

H.C. RIPPLE

WEATHER CLOUDY

COUNTY SENECA

R.C. GEYMAN

TEMP. 75°

TOWNSHIP CLINTON

SECTION 20

DWG BY AUBLE PID 107060

T 2 N R 15 E

TYPE MONUMENT P.K./WASHER

ON SURFACE - ~~BELOW~~ ON

OFFSET ☉ PAVEMENT ON LT : RT

10.5' TO RT EDGE PAVEMENT

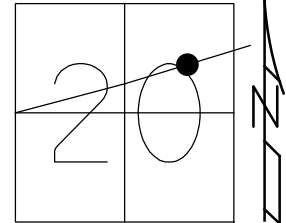
STATION: 829+28

HORZ.DATUM: NAD83 (2011)

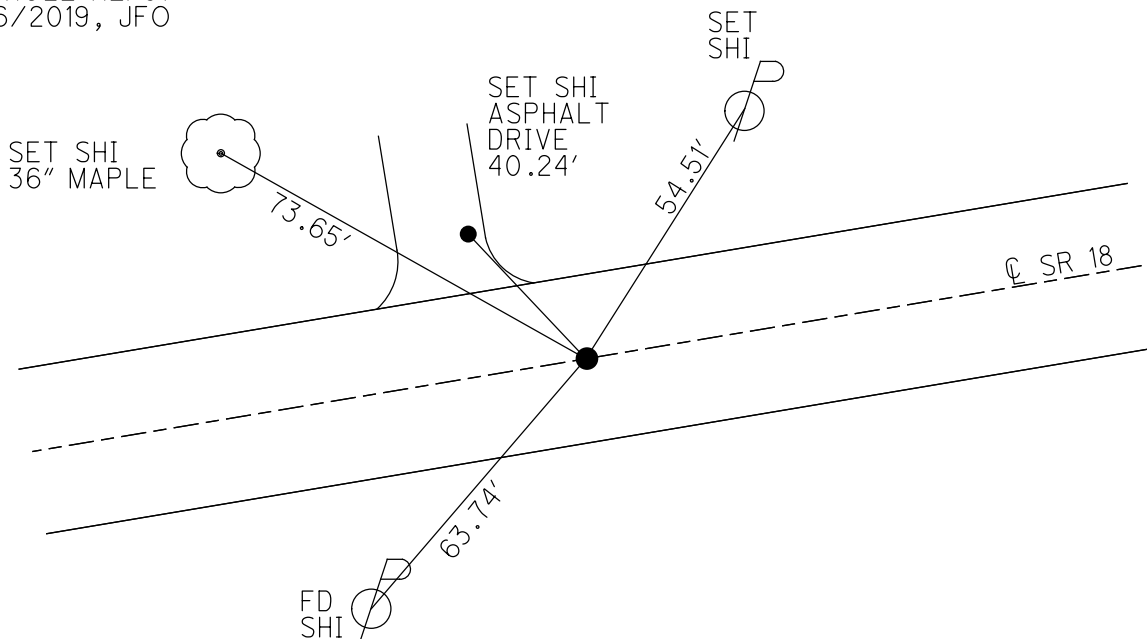
GEOID: 2012A

GRID: NORTHING: 530286.637

EASTING: 1788130.380



RECORD: P.I.
 STA 15+00
 $\Delta = 0^\circ 05' RT$
 FD NAIL/SHINER
 1.5" DOWN
 3/18/76
 SET P.K./WASHER
 9/7/76
 SET P.K./WASHER
 8/25/93, RCC
 FD HOLE REF51
 3/6/2019, JFO



O.D.O.T. DISTRICT 2 SURVEY OFFICE

PERSONNEL

REFERENCE NO. 51

SHEET 3 OF 24

NOTES CHENEY

H.C. RIPPLE

R.C. GEYMAN

DATE 6-30-1993

WEATHER CLOUDY

TEMP. 75°

ROUTE #18

COUNTY SENECA

TOWNSHIP CLINTON

SECTION 20

T 2 N R 15 E

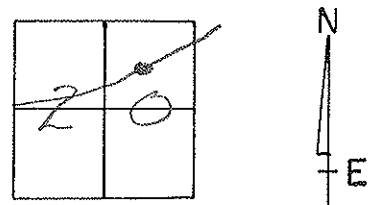
TYPE MONUMENT PK/WASHER

ON SURFACE - ~~BELOW~~ ON

~~LEFT~~ - RIGHT PAV'T. - ON

10.5 TO RT. EDGE PAVEMENT

S.L.M. 825+28



RECORD: 3-18-1976

P.I. STA. 15+00

$\Delta = 0^{\circ}05' RT.$

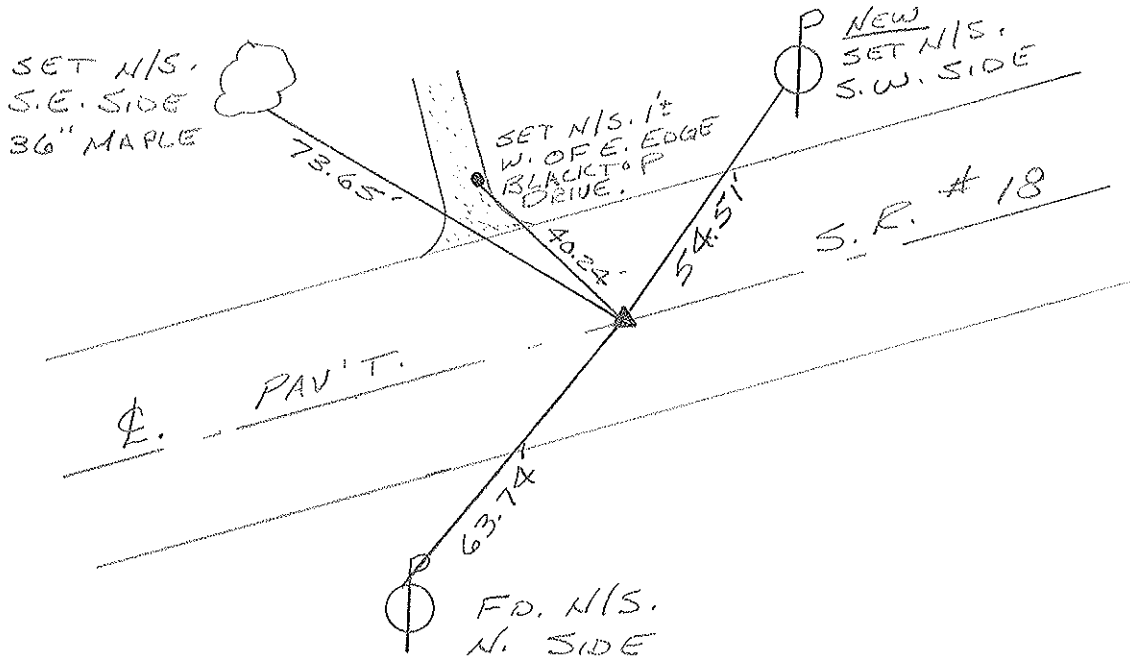
FD. NAIL & SHINER 1.5"

DOWN - NOT SET BY STATE.

SET PK/WASHER

9-7-1976

SET PK/WASHER
 8-25-1993
 RCC



Resurfaced 1993

SHEET NO. 1

PERSONNEL	TITLE	PERSONNEL	TITLE
Ash			
Cronin			
Ripple			
Anderson			

COUNTY Seneca

DATE checked 6/9/71
drawn 1/27/71

S. R. # 18 (S.H. 449)

WEATHER

SEC. K

TEMP.

DESCRIPTION Ties for Control Points - Tiffin to Republic

JOB NO.

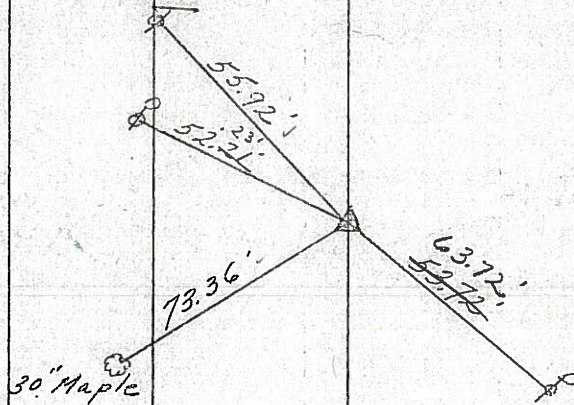
LEFT

CENTER LINE

RIGHT

(51)

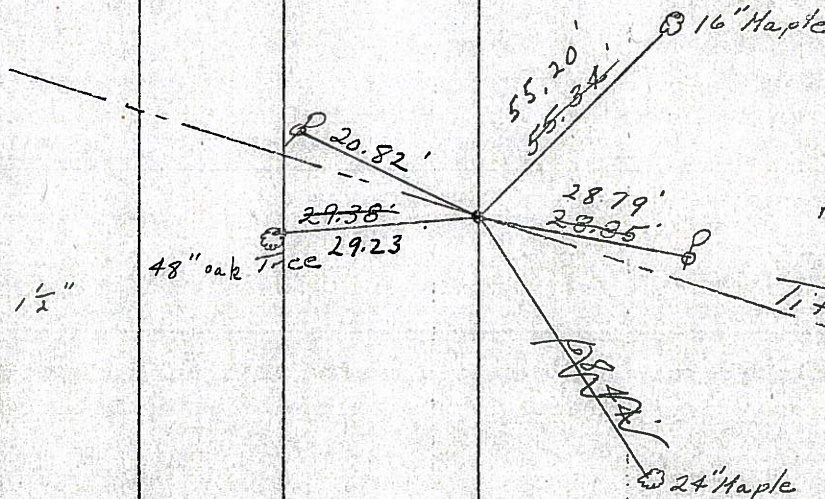
P.I.
 $\Delta = 0^{\circ} 05' \text{ Rt.}$
 15+00
 Fd. nail & shiner $1\frac{1}{2}''$
 below surface
 * Not set by State



Tied 6/9/71
 retied 3/18/76
 Temp 30°
 Reset P.K. Nail & washer
 9/7/76

(50)

0+00
 Tiffin Corp.
 Fd. small R.R. Spk. $1\frac{1}{2}''$
 top of surface
 below



Tied 6/9/71
 retied 3/18/76

Tiffin Corp. Line

Reset P.K. Nail & washer
 9/7/76

PERSONNEL TITLE PERSONNEL TITLE

Ash
Bronin
Ripple
Anderson

COUNTY Seneca

drawn 1/27/72
DATE checked 6/9/71

S. R. #18 (S.H. 449)

WEATHER

SEC. K

TEMP.

DESCRIPTION Ties for Control Points - Tiffin to Republic

JOB NO.

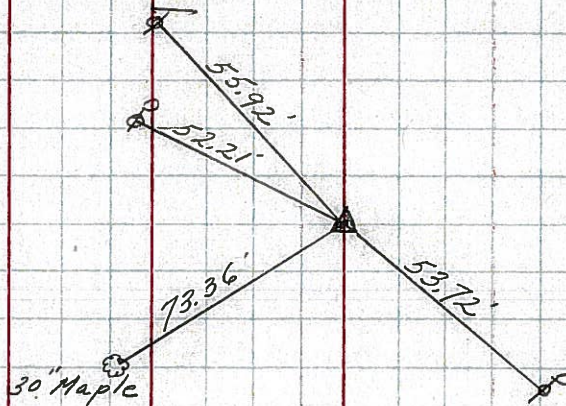
LEFT

CENTER LINE

RIGHT

51

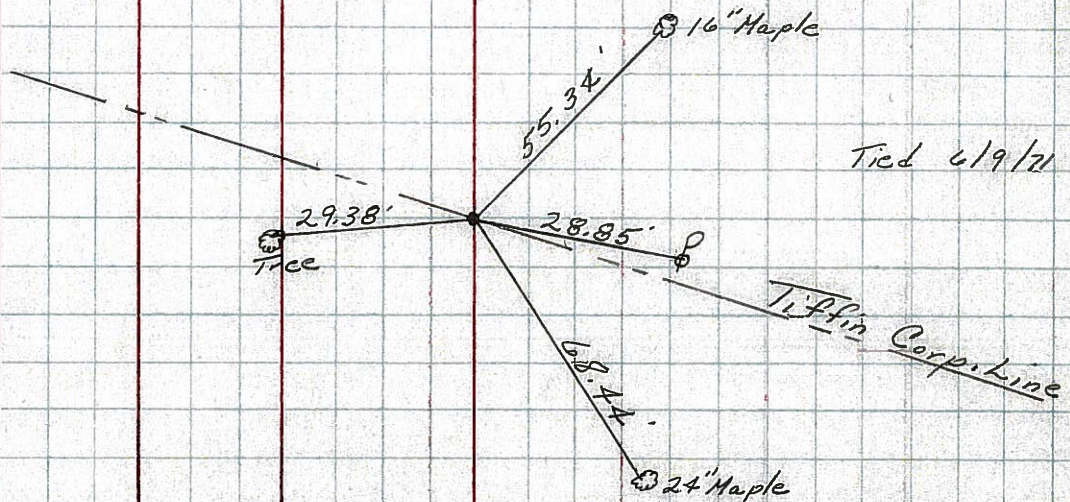
P.I.
 $\Delta = 0^{\circ}05' \text{ Rt.}$
15+00
Fd. nail's shiner $1\frac{1}{2}''$
below surface
* Not set by State



50

1

0+00
Tiffin Corp.
Fd. small R.R. Spk.
top of surface



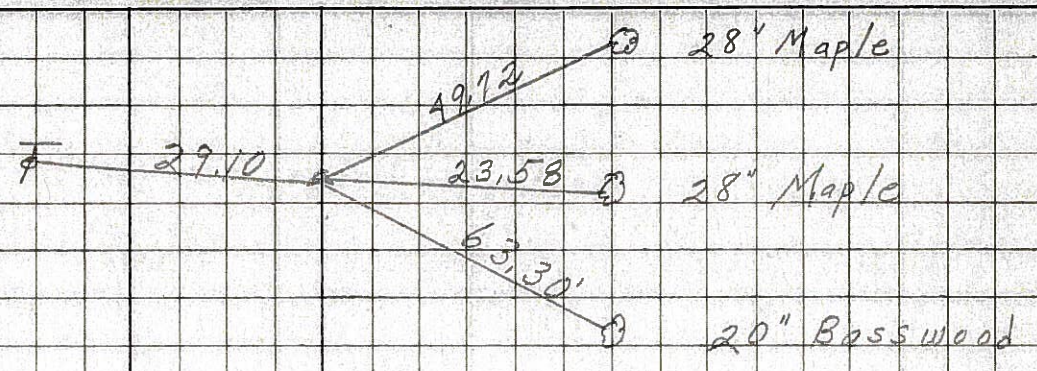
PERSONNEL	TITLE	PERSONNEL	TITLE	COUNTY	Seneca	DATE	10-25-68
Schneider				S. R.	18	WEATHER	Cloudy - Rain
Barbour				SEC.	Tiffin to Republic	TEMP.	45°
Redding							
Potts							

DESCRIPTION Ties for Control Points JOB NO. _____

53

59+56
 $\Delta = 1^{\circ}57' R$
 Fd. P.K. Nail
 on top

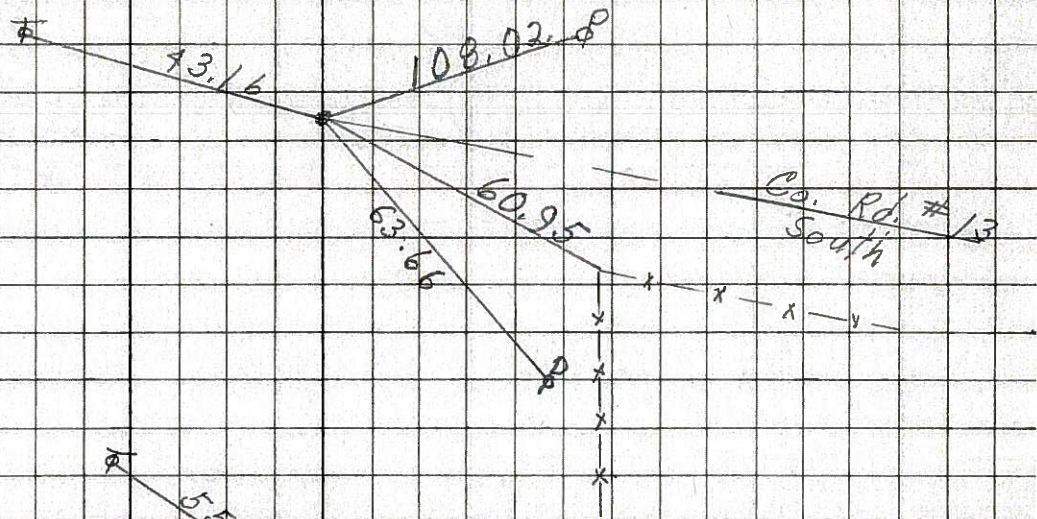
8143



52

Fd. P.R. spk.
 on surface

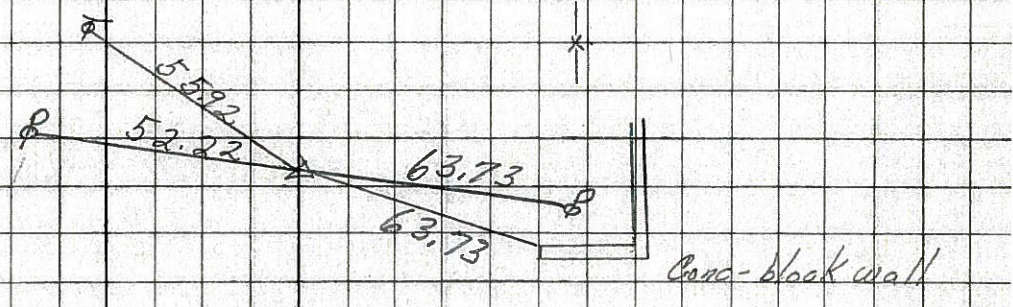
8142



51

15+00
 $\Delta = 0^{\circ}05' R$
 Fd. P.K. Nail
 2" down

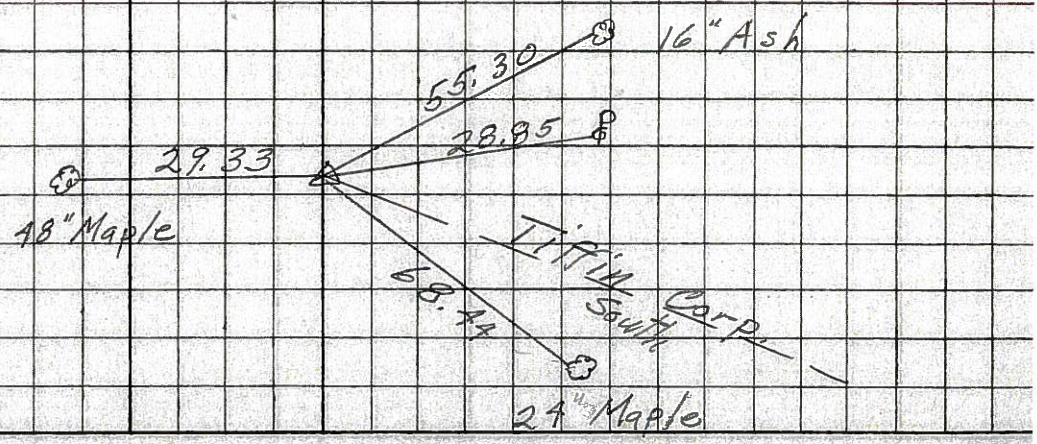
8141



50

0+00
 Tiffin Corp.
 Fd. small R.R. spk.
 2" down

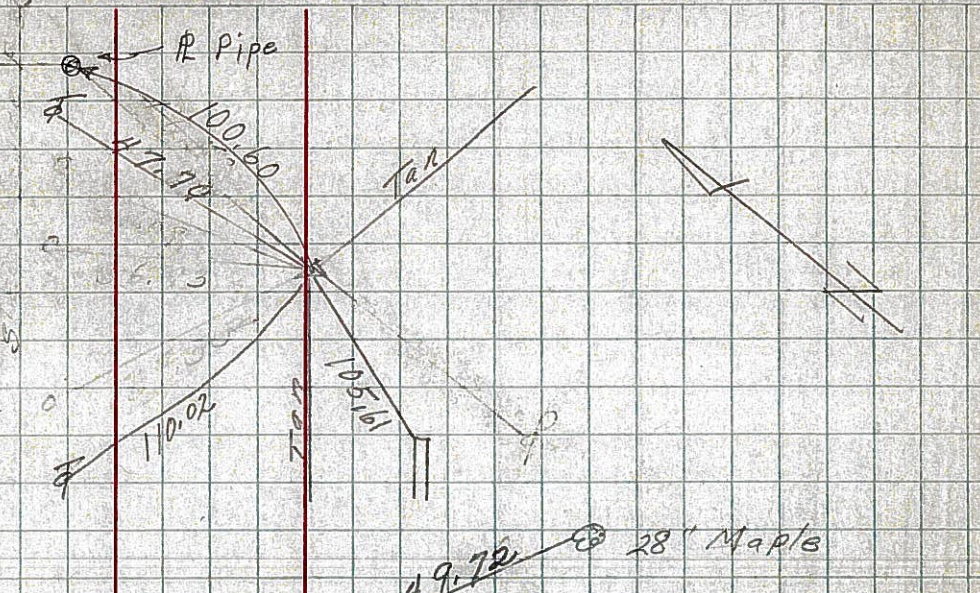
8140



PERSONNEL TITLE PERSONNEL TITLE COUNTY Seneca DATE 12-22-68
Schneider 8 S. R. 18 WEATHER
Crew SEC. K TEMP.
 DESCRIPTION S.H. 449 Tiffin to Republic JOB NO.

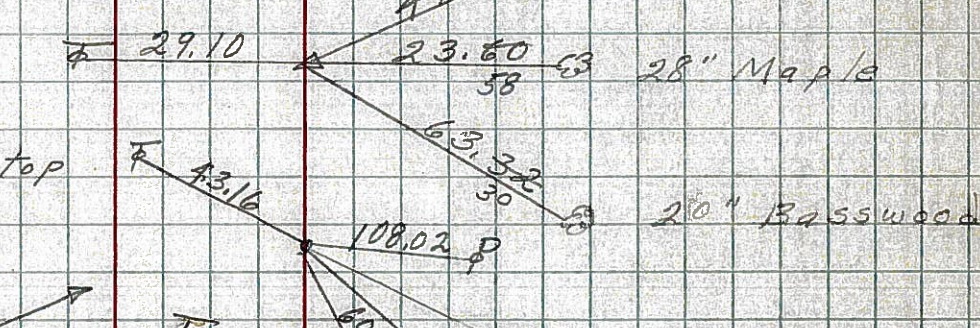
54

Sta. 55+86.85
 $\Delta = 20^{\circ} 01' \text{ Rt.}$
 Set iron pin
 Good ties
 3.75' from edge Pavmt.
~~#~~
8144



53

Sta. 39+56
 $\Delta = 1^{\circ} 57' \text{ Lt.}$
 Found R.R. spk. on top
~~#~~
8143



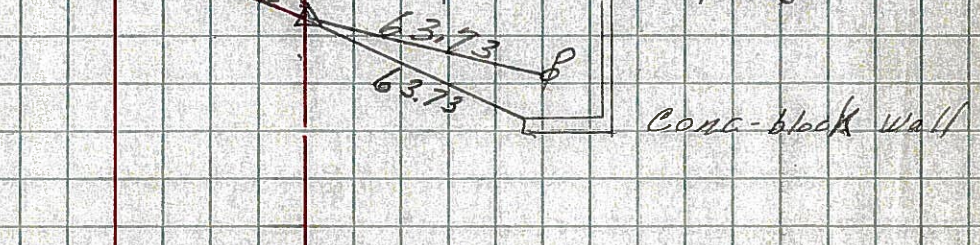
52

Fd. R.R. spk.
 on top
8142



51

Sta. 15+00
 $\Delta = 0^{\circ} 05' \text{ Rt.}$
 Fd. P.K. Nail
 2" down
~~#~~
8141



50

Sta. 0+00
 Tiffin Corp.
 Found small R.R. spk
 3" down
~~#~~
8140

