

O.D.O.T. DISTRICT 2 SURVEY OFFICE (USE ONLY)

PERSONNEL

REFERENCE NO. 52

SHEET 12 OF 18

NOTES RHOADES

DATE 9/8/21

ROUTE SR 18

H.C. AUBLE

WEATHER SUNNY

COUNTY SENECA

R.C. NIESE

TEMP. 73°

TOWNSHIP CLINTON

SECTION 20

DWG BY RHOADES

PID PVTRAIN

T 2 N R 15 E

TYPE MONUMENT P.K.NAIL

ON SURFACE - ~~BELOW~~ ON

OFFSET 8.5' TO RT EDGE PAVEMENT

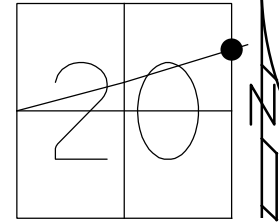
STATION: 842+75

HORZ.DATUM: NAD83 (2011)

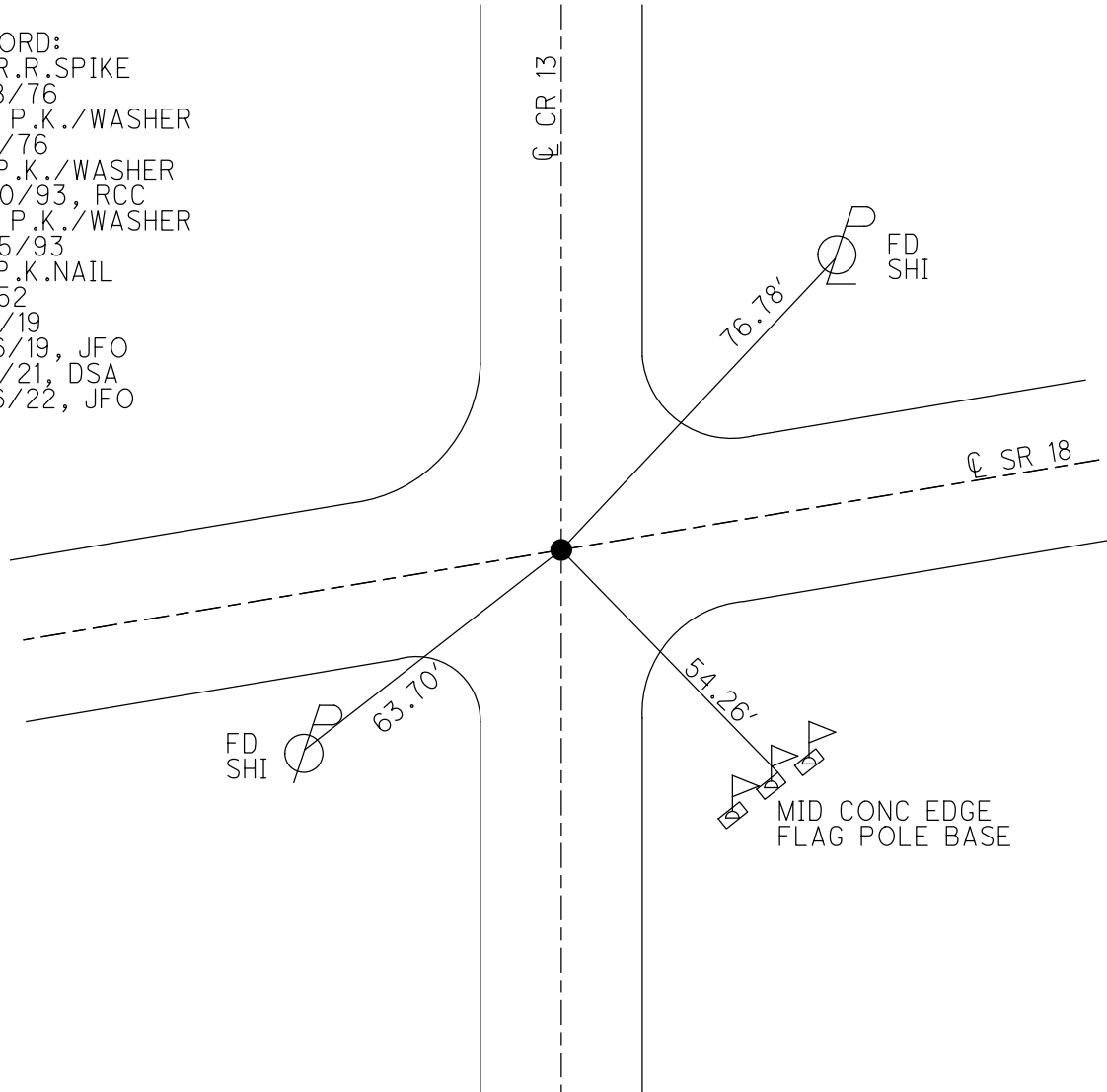
GEOID: 2012A

GRID: NORTHING: 530718.648

EASTING: 1789404.328



RECORD:  
 FD R.R.SPIKE  
 3/18/76  
 SET P.K./WASHER  
 9/7/76  
 FD P.K./WASHER  
 6/30/93, RCC  
 SET P.K./WASHER  
 8/25/93  
 FD P.K.NAIL  
 REF52  
 3/6/19  
 8/16/19, JFO  
 9/8/21, DSA  
 2/16/22, JFO



O.D.O.T. DISTRICT 2 SURVEY OFFICE (USE ONLY)

PERSONNEL

REFERENCE NO. 52

SHEET 6 OF 12

NOTES CHENEY

DATE 6-30-1993

ROUTE SR 18

H.C. RIPPLE

WEATHER CLOUDY

COUNTY SENECA

R.C. GEYMAN

TEMP. 75°

TOWNSHIP CLINTON

SECTION 20

DWG BY AUBLE

PID 107060

T 2 N R 15 E

TYPE MONUMENT P.K./WASHER

ON SURFACE - ~~BELOW~~ ON

OFFSET Q PAVEMENT 1' ~~LT~~ : RT

8.5' TO RT EDGE PAVEMENT

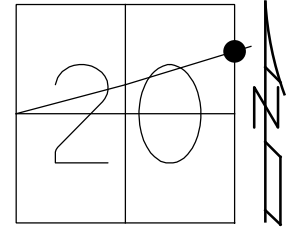
STATION: 842+75

HORIZ.DATUM: NAD83 (2011)

GEOID: 2012A

GRID: NORTHING: 530718.648

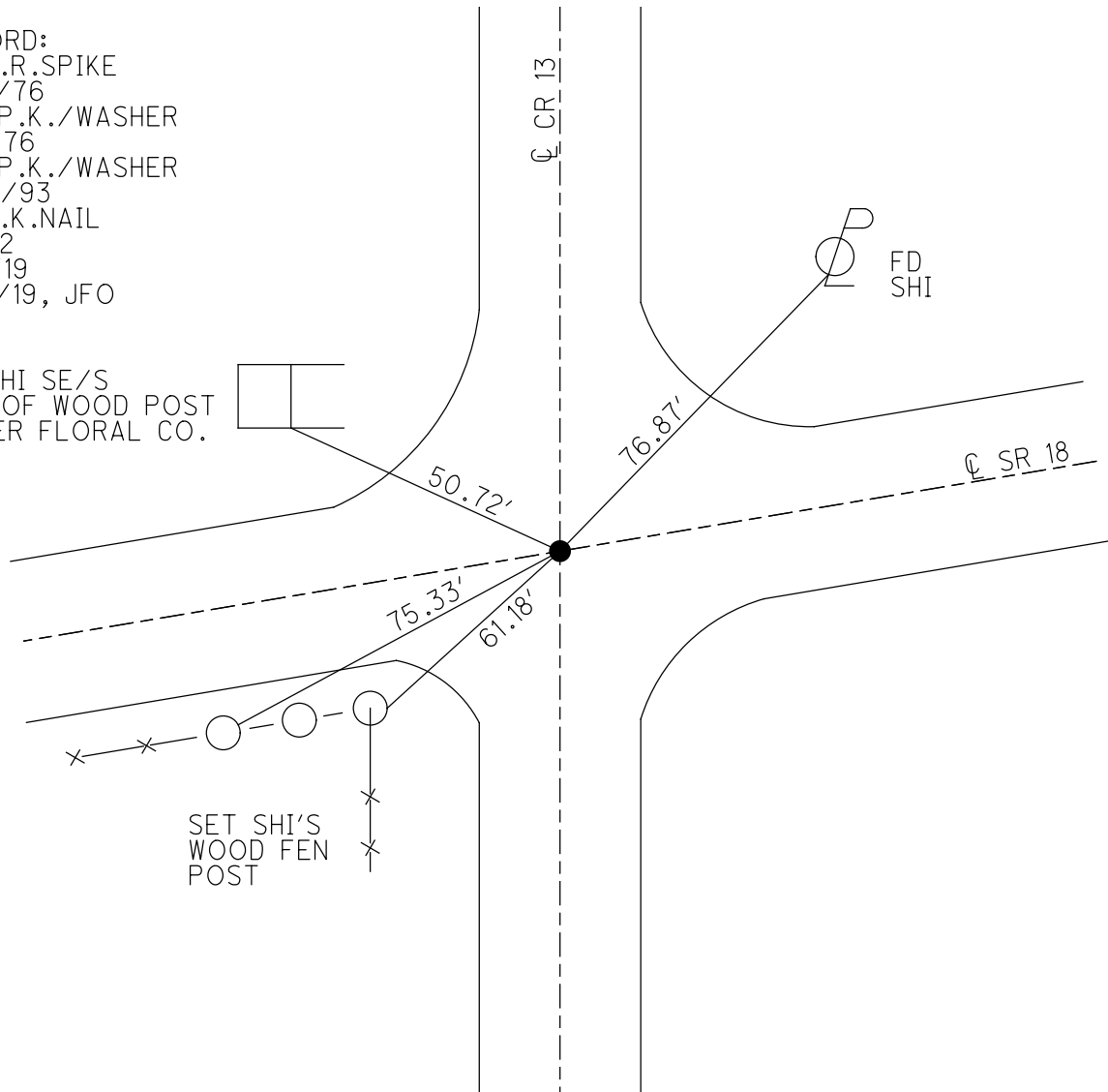
EASTING: 1789404.328



RECORD:  
 FD R.R.SPIKE  
 3/18/76  
 SET P.K./WASHER  
 9/7/76  
 SET P.K./WASHER  
 8/25/93  
 FD P.K.NAIL  
 REF52  
 3/6/19  
 8/16/19, JFO

SET SHI SE/S  
 COR. OF WOOD POST  
 WAGNER FLORAL CO.

SET SHI'S  
 WOOD FEN  
 POST



O.D.O.T. DISTRICT 2 SURVEY OFFICE

PERSONNEL \_\_\_\_\_

REFERENCE NO. 52

SHEET 4 OF 24

NOTES CHEHEY

H.C. RIPPLE

R.C. GEYMAN

DATE 6-30-1993

WEATHER CLOUDY

TEMP. 75°

ROUTE #18

COUNTY SENECA

TOWNSHIP CLINTON

SECTION 20 & 21

T2N R15E

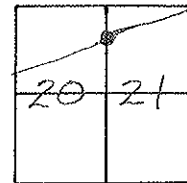
TYPE MONUMENT PK/WASHER

ON SURFACE - ~~BELOW~~ ON

~~1' - C~~ PAV'T. - RIGHT 1'

8.5 TO RT. EDGE PAVEMENT

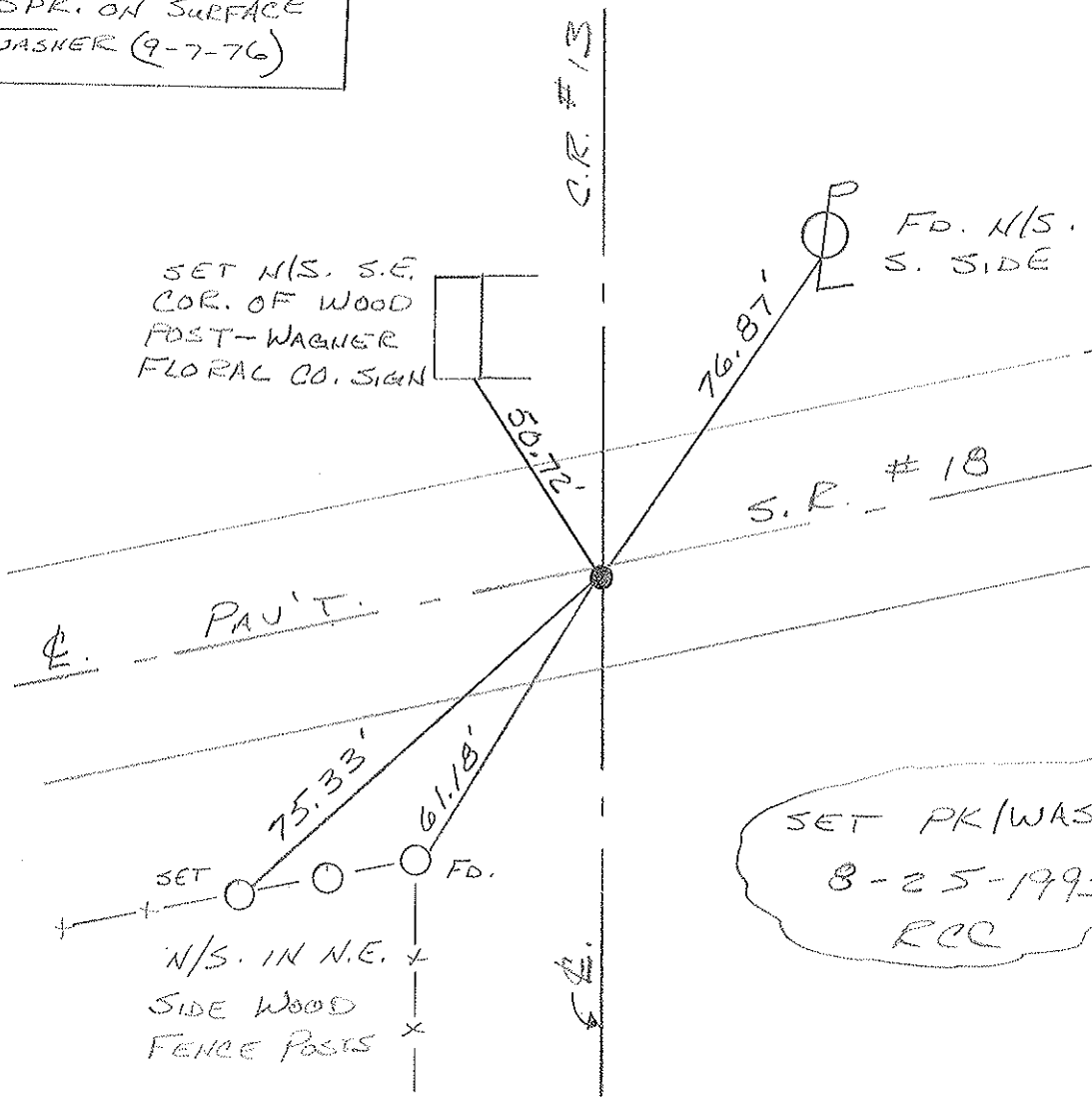
S.L.M. 842+75



RECORD: 3-18-1976

FD. P.R. SPK. ON SURFACE

SET PK/WASHER (9-7-76)



SET PK/WASHER  
8-25-1993  
RCC

PERSONNEL	TITLE	PERSONNEL	TITLE
Cronin			
Ripple			
Geyman			

COUNTY Seneca

DATE 3/18/76

S. R. #18 (S.H. #449)

WEATHER overcast

SEC Tiffin to Republic

TEMP. 30°

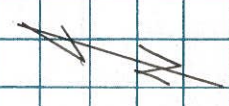
DESCRIPTION Ties for Control Points

JOB NO.

LEFT

CENTER LINE

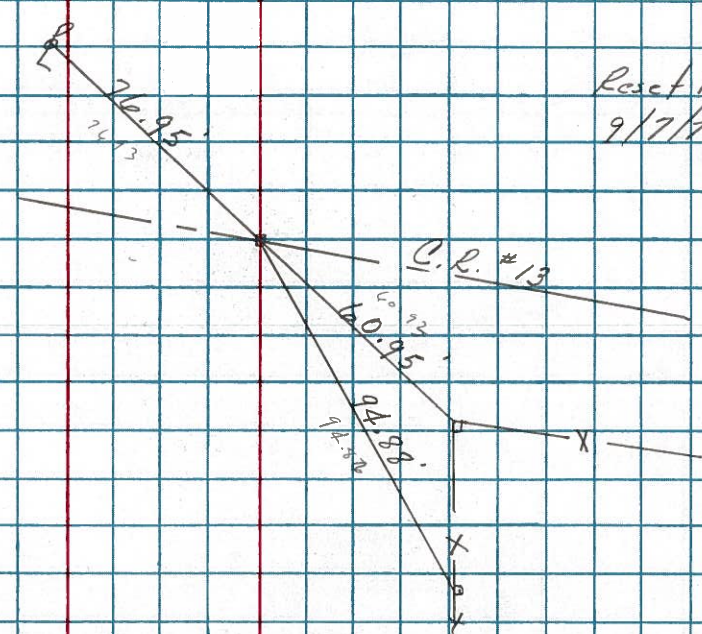
RIGHT



52

Found R.R. spike on surface

Reset P.K. Nail/washer  
9/7/96



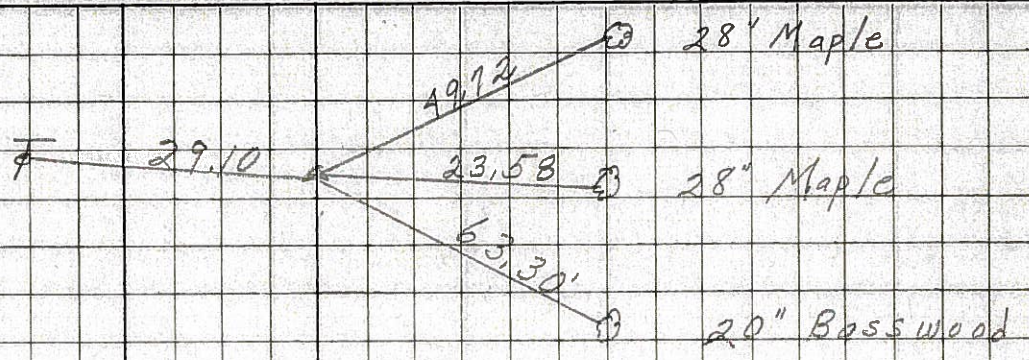
PERSONNEL	TITLE	PERSONNEL	TITLE	COUNTY	Seneca	DATE	10-25-68
Schneider				S. R.	18	WEATHER	Cloudy - Rain
Barbour				SEC.	Tiffin to Republic	TEMP.	45°
Reading							
Potts							

DESCRIPTION Ties for Control Points JOB NO. \_\_\_\_\_

53

39+56  
 $\Delta = 19^{\circ}57' Rt$   
 Fd. P.K. Nail  
 on top

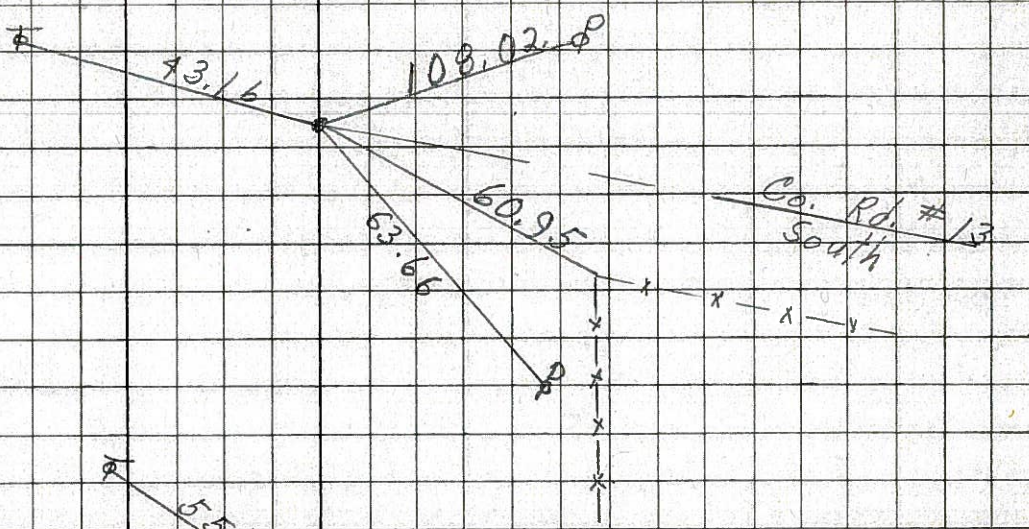
8143



52

Fd. P.R. spk.  
 on surface

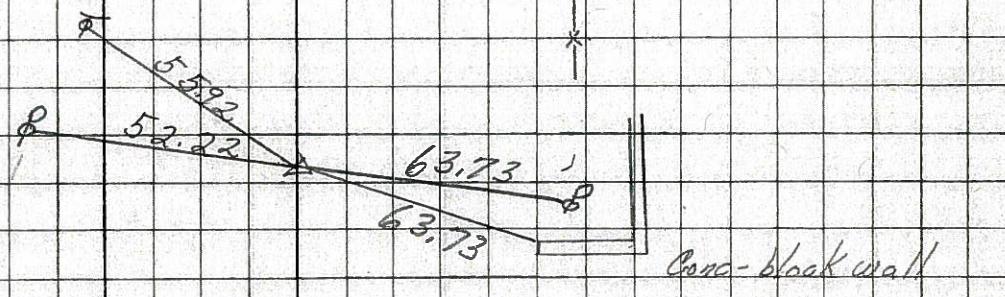
8142



51

15+00  
 $\Delta = 0^{\circ}05' Rt$   
 Fd. P.K. Nail  
 2" down

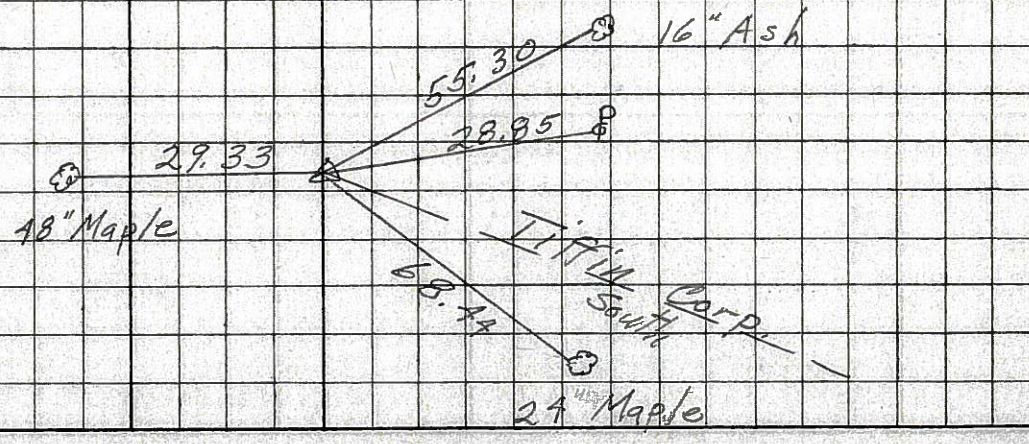
8141



50

0+00  
 Tiffin corp.  
 Fd. small R.R. spk.  
 2" down

8140



PERSONNEL	TITLE	PERSONNEL	TITLE	COUNTY	DATE
Schneider				Seneca	10-25-68
6				S. R.	18
Crew				WEATHER	
				SEC.	K
				TEMP.	

DESCRIPTION S.H. 449 Tiffin to Republic JOB NO. \_\_\_\_\_

54

Sta. 55+86.85  
 $\Delta = 20^{\circ} 01' RT.$   
 Set iron pin  
 Good ties  
 3.75' from edge Parm't.  
 # ~~617~~

8144

53

Sta. 39+56  
 $\Delta = 1^{\circ} 57' Lt.$   
 Found RR. spk. on top  
 # ~~618~~

8143

52

Fd. RR. spk.  
 on top

8142

51

Sta. 15+00  
 $\Delta = 0^{\circ} 05' RT.$   
 Fd. P.K. Nail  
 2" down  
 # ~~619~~

8141

50

Sta. 0+00  
 Tiffin Corp.  
 Found small RR. spk  
 3" down  
 # ~~620~~

8140

