

O.D.O.T. DISTRICT 2 SURVEY OFFICE (USE ONLY)

PERSONNEL

REFERENCE NO. 53

SHEET 13 OF 18

NOTES RHOADES

DATE 7/25/22

ROUTE SR 18

H.C. AUBLE

WEATHER CLOUDY

COUNTY SENECA

R.C. NIESE

TEMP. 75°

TOWNSHIP CLINTON

WHITAKER

PID PVTRN

SECTION 21

DWG BY WHITAKER

T 2 N R 15 E

TYPE MONUMENT MAG/WASHER

ON SURFACE - ~~BELOW~~ ON

OFFSET 0.8' ~~LT~~ : RT

9.5' TO RT EDGE PAVEMENT

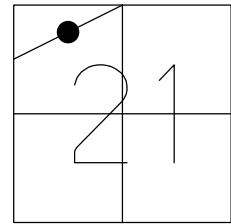
STATION: 853+86

HORZ. DATUM: NAD83 (2011)

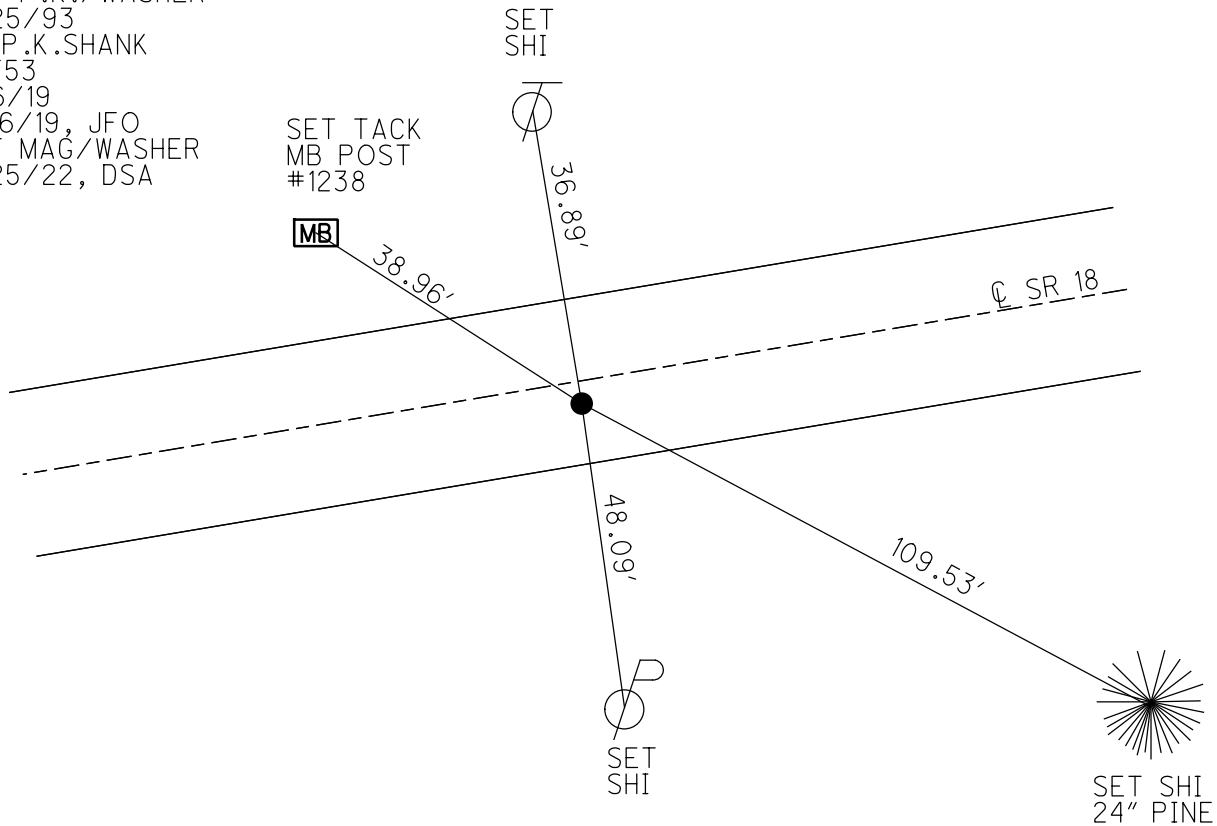
GEOID: 2012A

GRID: NORTHING: 531074.956

EASTING: 1790455.494



RECORD: P.I.
 STA. 39+56
 $\Delta = 1^\circ 57' \text{ LT}$
 FD R.R. SPIKE
 1.5" DOWN
 3/18/76
 SET P.K./WASHER
 9/7/76
 SET P.K./WASHER
 8/25/93
 FD P.K. SHANK
 REF53
 3/6/19
 8/16/19, JFO
 SET MAG/WASHER
 7/25/22, DSA



O.D.O.T. DISTRICT 2 SURVEY OFFICE (USE ONLY)

PERSONNEL

REFERENCE NO. 53

SHEET 7 OF 12

NOTES CHENEY

DATE 6-30-1993

ROUTE SR 18

H.C. RIPPLE

WEATHER CLOUDY

COUNTY SENECA

R.C. GEYMAN

TEMP. 75°

TOWNSHIP CLINTON

DWG BY AUBLE PID 107060

SECTION 21

T 2 N R 15 E

TYPE MONUMENT P.K./WASHER

ON SURFACE - ~~BELOW~~ ON

OFFSET \odot PAVEMENT 1' ~~RT~~ : RT

9.5' TO RT EDGE PAVEMENT

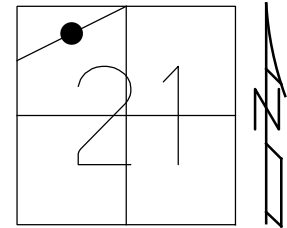
STATION: 853+86

HORIZ.DATUM: NAD83 (2011)

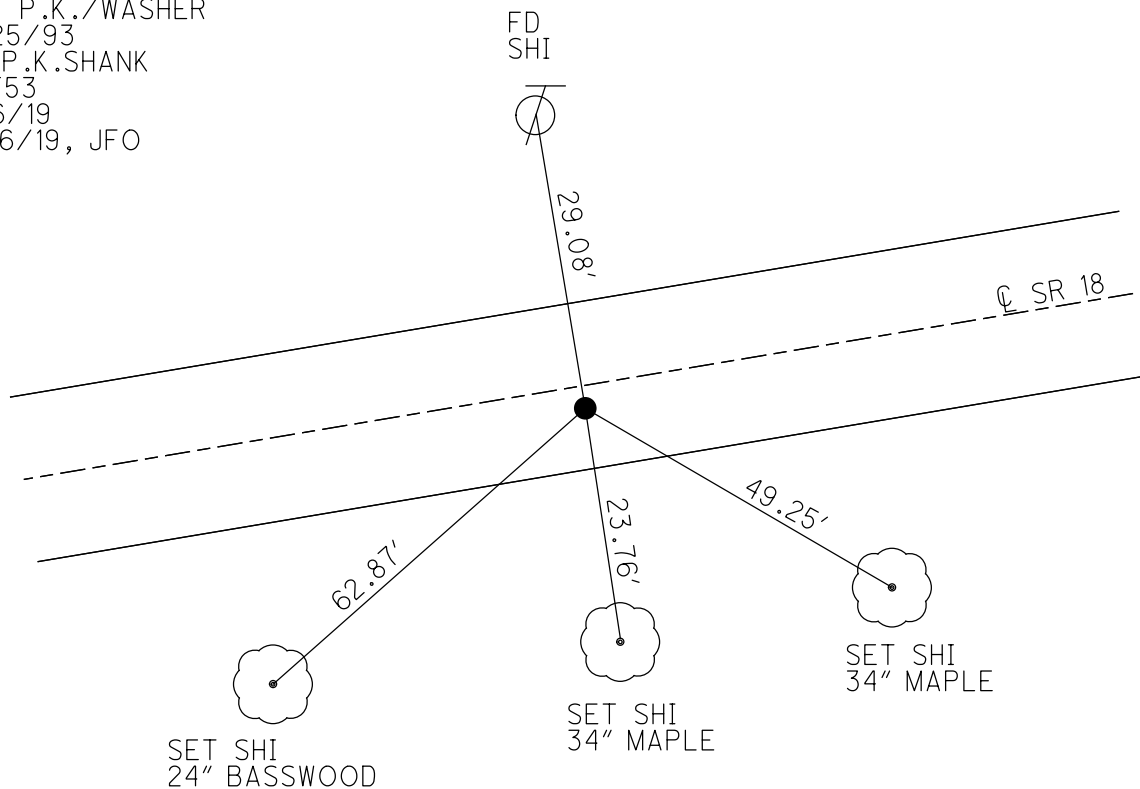
GEOID: 2012A

GRID: NORTHING: 531074.956

EASTING: 1790455.494



RECORD: P.I.
 STA. 39+56
 $\Delta = 1^\circ 57' \text{ LT}$
 FD R.R.SPIKE
 1.5" DOWN
 3/18/76
 SET P.K./WASHER
 9/7/76
 SET P.K./WASHER
 8/25/93
 FD P.K.SHANK
 REF53
 3/6/19
 8/16/19, JFO



O.D.O.T. DISTRICT 2 SURVEY OFFICE

PERSONNEL

REFERENCE NO. 53

SHEET 5 OF 24

NOTES CHENEY

H.C. RIPPLE

DATE 6-30-1993

ROUTE #18

R.C. GEYMAN

WEATHER CLOUDY

COUNTY SENECA

TEMP. 75°

TOWNSHIP CLINTON

SECTION 21

T2N R15E

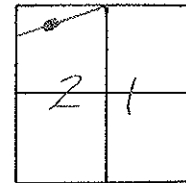
TYPE MONUMENT PK/WASHER

ON SURFACE - ~~BELOW~~ ON

~~LEFT~~ - C PAV'T. - RIGHT 1'

9.5' TO Rt. EDGE PAVEMENT

S.L.M. 853+86



RECORD: 3-18-1976

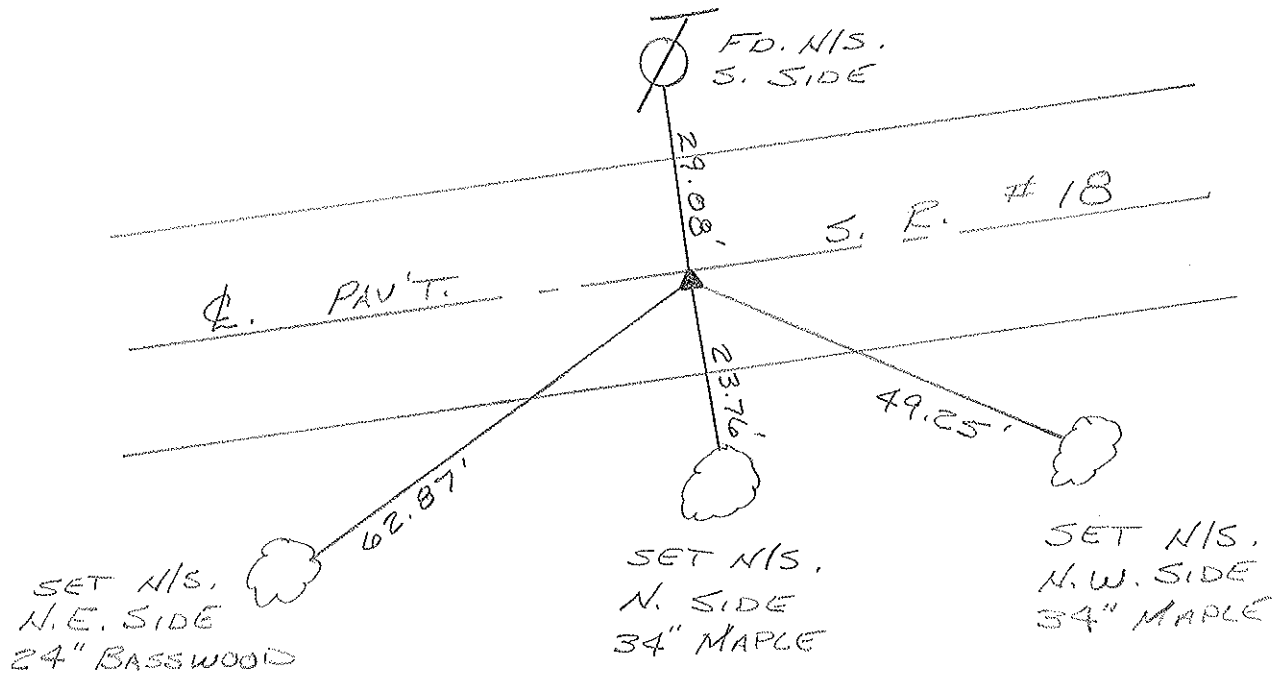
P.I. STA. 39+56

$\Delta = 1^{\circ}57'$ LT.

FD. RR. SPK. 1/5" DOWN

SET PK/WASHER (9-7-76)

SET PK/WASHER
8-25-1993
RCC



PERSONNEL	TITLE	PERSONNEL	TITLE
Ash			
Cronin			
Ripple			
Anderson			

COUNTY Seneca

drawn 1/27/76
DATE checked 6/9/71

S. R. #18 (S.H. 449)

WEATHER _____

SEC. _____

TEMP. _____

DESCRIPTION Ties for Control Bints - Tiffin to Republic

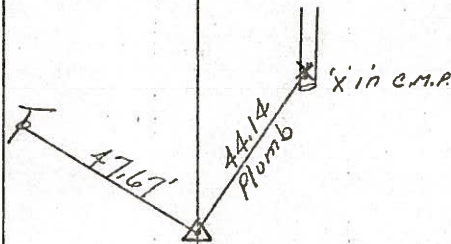
JOB NO. _____

LEFT

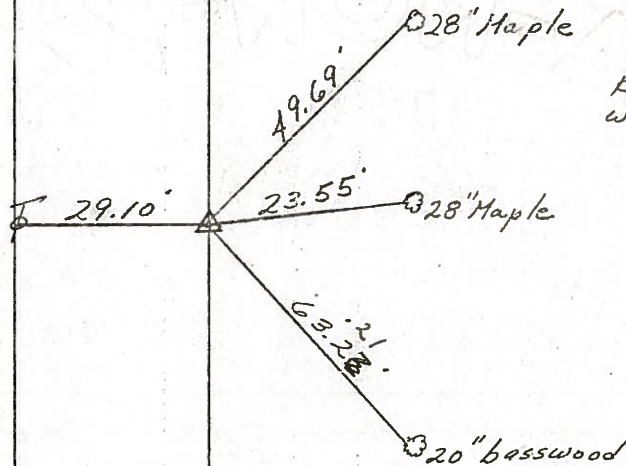
CENTER LINE

RIGHT

(54)
P.I.
 $\Delta = 20^{\circ} 01' \text{ Rt.}$
55+86.85
Fd. Iron Pin



(53)
Tics OK. 3/18/76
P.I.
 $\Delta = 1^{\circ} 57' \text{ Lt.}$
39+56
Fd. R.R. spike $1\frac{1}{2}$ "
below surface



Reset P.K. Nail & washer 9/7/76



PERSONNEL TITLE PERSONNEL TITLE

COUNTY Seneca

DATE checked 6/9/71

Ash

Cronin

Ripple

Anderson

S. R. #18 (S.H. 449)

WEATHER

SEC.

TEMP.

DESCRIPTION Ties for Control Points - Tiffin to Republic

JOB NO.

LEFT

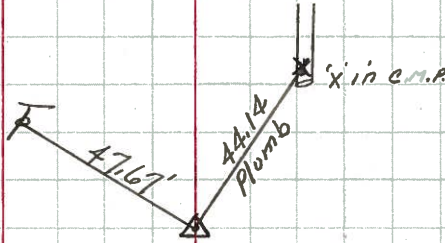
CENTER LINE

RIGHT



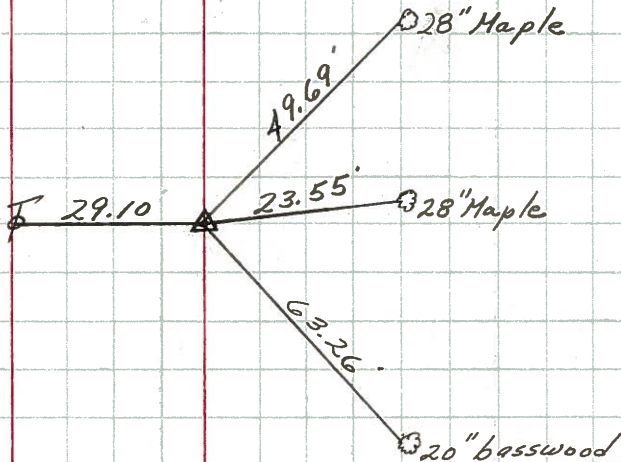
54

P.I.
 $\Delta = 20^{\circ} 01' \text{ Rt.}$
55+86.85
Fd. Iron Pin



53

P.I.
 $\Delta = 1^{\circ} 57' \text{ Lt.}$
39+56
Fd. R.R. 3 pin. $1\frac{1}{2}$ "
below surface

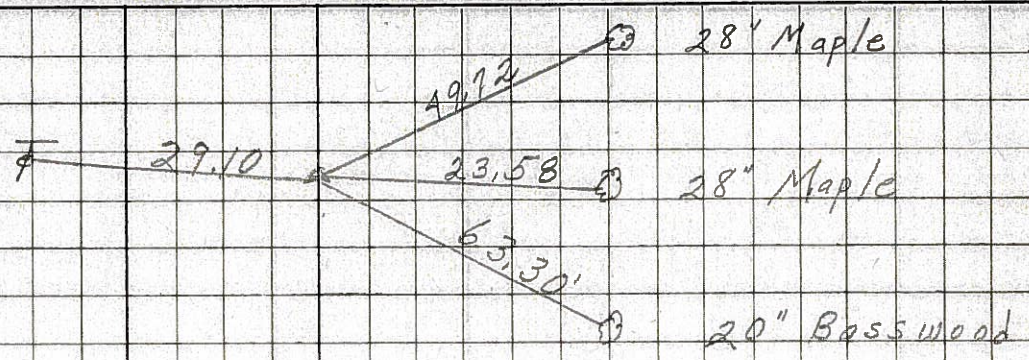


PERSONNEL	TITLE	PERSONNEL	TITLE	COUNTY	Seneca	DATE	10-25-68	
Schneider				S. R.	18	WEATHER	Cloudy - Rain	
Barbour				SEC.	Tiffin to Republic	TEMP.	45°	
Reading								
Potts								
DESCRIPTION				Ties for Control Points			JOB NO.	

53

39+36
 $\Delta = 19^{\circ}57' Rts$
 Fd. P.K. Nail
 on top

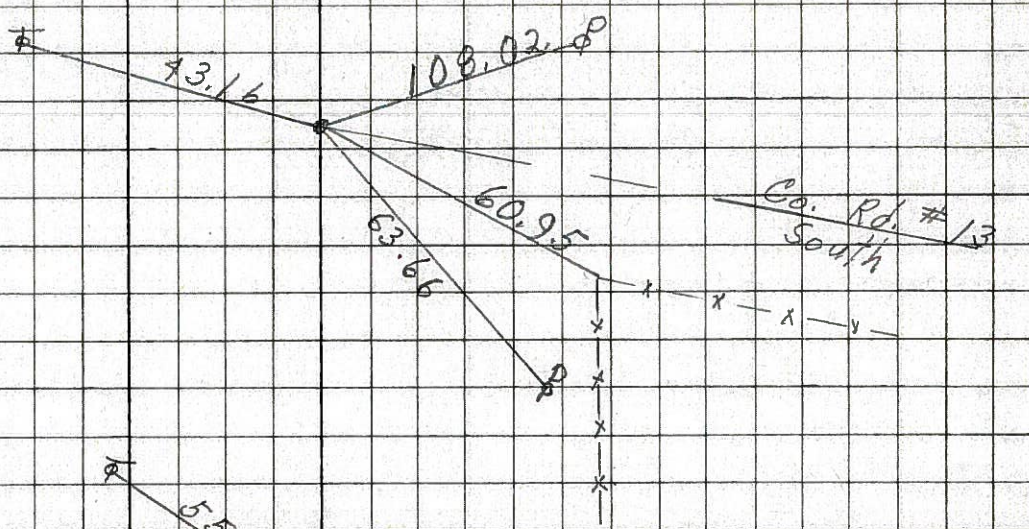
8143



52

Fd. R.R. spk.
 on surface

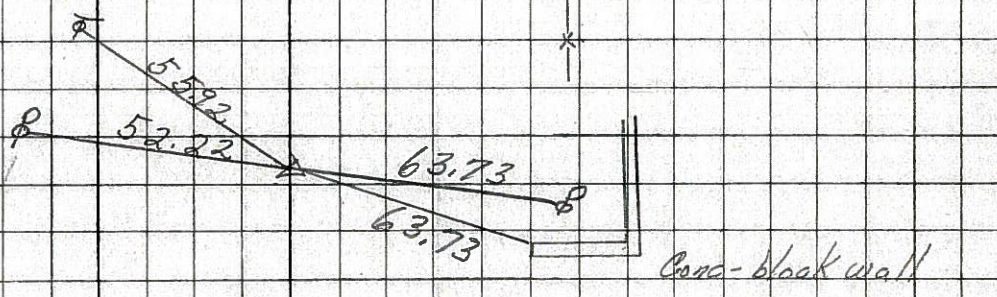
8142



51

15+00
 $\Delta = 0^{\circ}05' Rts$
 Fd. P.K. Nail
 2" down

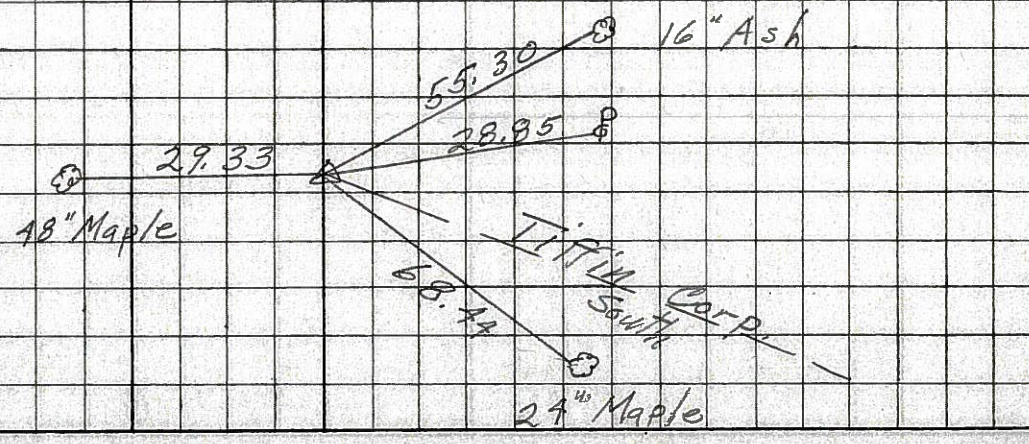
8141



50

0+00
 Tiffin corp.
 Fd. small R.R. spk.
 2" down

8140



PERSONNEL Schneider TITLE _____ PERSONNEL _____ TITLE _____
 COUNTY Seneca DATE 12-22-65
 S. R. 18 WEATHER _____
 SEC. K TEMP. _____

DESCRIPTION S.H. 449 Tiffin to Republic JOB NO. _____
 LEFT CENTER LINE RIGHT

54

Sta 55+86.85
 $\Delta = 20^\circ 01' RT$
 Set iron pin
 Good ties
 3.75' from edge Pavmt.
 # ~~8144~~

8144

53

Sta. 39+56
 $\Delta = 1^\circ 57' Lt.$
 Found R.R. spk. on top

~~8143~~
 8143

52

Fd. R.R. spk.
 on top

8142

51

Sta. 15+00
 $\Delta = 0^\circ 05' Rt.$
 Fd. P.K. Nail
 2" down
 # ~~8141~~

8141

50

Sta. 0+00
 Tiffin Corp.
 Found small R.R. spk
 2" down
 # ~~8140~~

8140

