

O.D.O.T. DISTRICT 2 SURVEY OFFICE (USE ONLY)

PERSONNEL

REFERENCE NO. 54

SHEET 8 OF 12

NOTES CHENEY

DATE 6-30-1993

ROUTE SR 18

H.C. RIPPLE

WEATHER CLOUDY

COUNTY SENECA

R.C. GEYMAN

TEMP. 75°

TOWNSHIP CLINTON

SECTION 21

DWG BY AUBLE

PID 107060

T 2 N R 15 E

TYPE MONUMENT 1" IPIN

~~ON SURFACE~~ - BELOW 2"

OFFSET Q PAVEMENT 66' LT : ~~RT~~

55' TO LT EDGE PAVEMENT

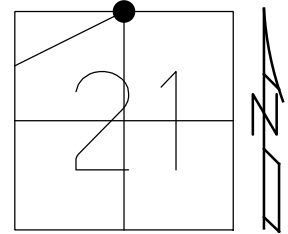
STATION: 870+13

HORIZ.DATUM: NAD83 (2011)

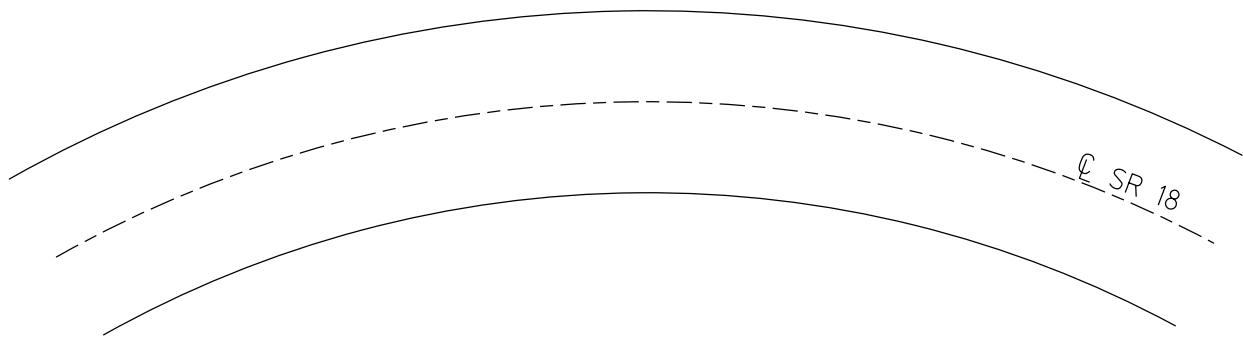
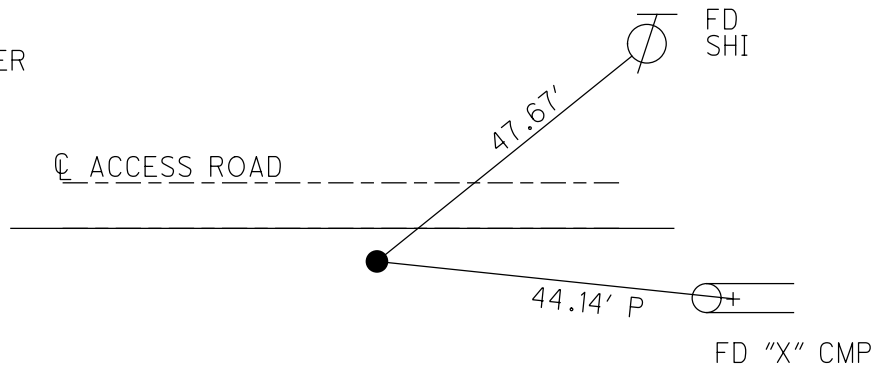
GEOID: 2012A

GRID: NORTHING: 531650.251

EASTING: 1791981.345



RECORD: P.I.
 STA. 55+86.85
 $\Delta = 20^\circ 01' RT$
 FD IPIN
 3/18/76
 SET SURVEY MARKER
 POST ON N/SIDE
 8/25/1993
 FD 1" IPIN
 3" DOWN
 REF54
 3/6/2019, JFO



O.D.O.T. DISTRICT 2 SURVEY OFFICE

PERSONNEL

REFERENCE NO. 54

SHEET 6 OF 24

NOTES CHENEY

H.C. RIPPLE

DATE 6-30-1993

ROUTE #18

R.C. GEYMAN

WEATHER Cloudy

COUNTY SENECA

TEMP. 75°

TOWNSHIP CLINTON

SECTION 21

T. 2 N. R. 15 E

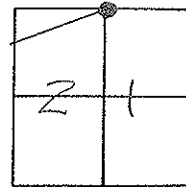
TYPE MONUMENT 1" IRON ROD

~~ON~~ SURFACE - BELOW 2"±

LEFT- ϕ PAV'T. - ~~RIGHT~~ 66'

55' RT. TO LT. EDGE PAVEMENT

S.L.M. 870+13

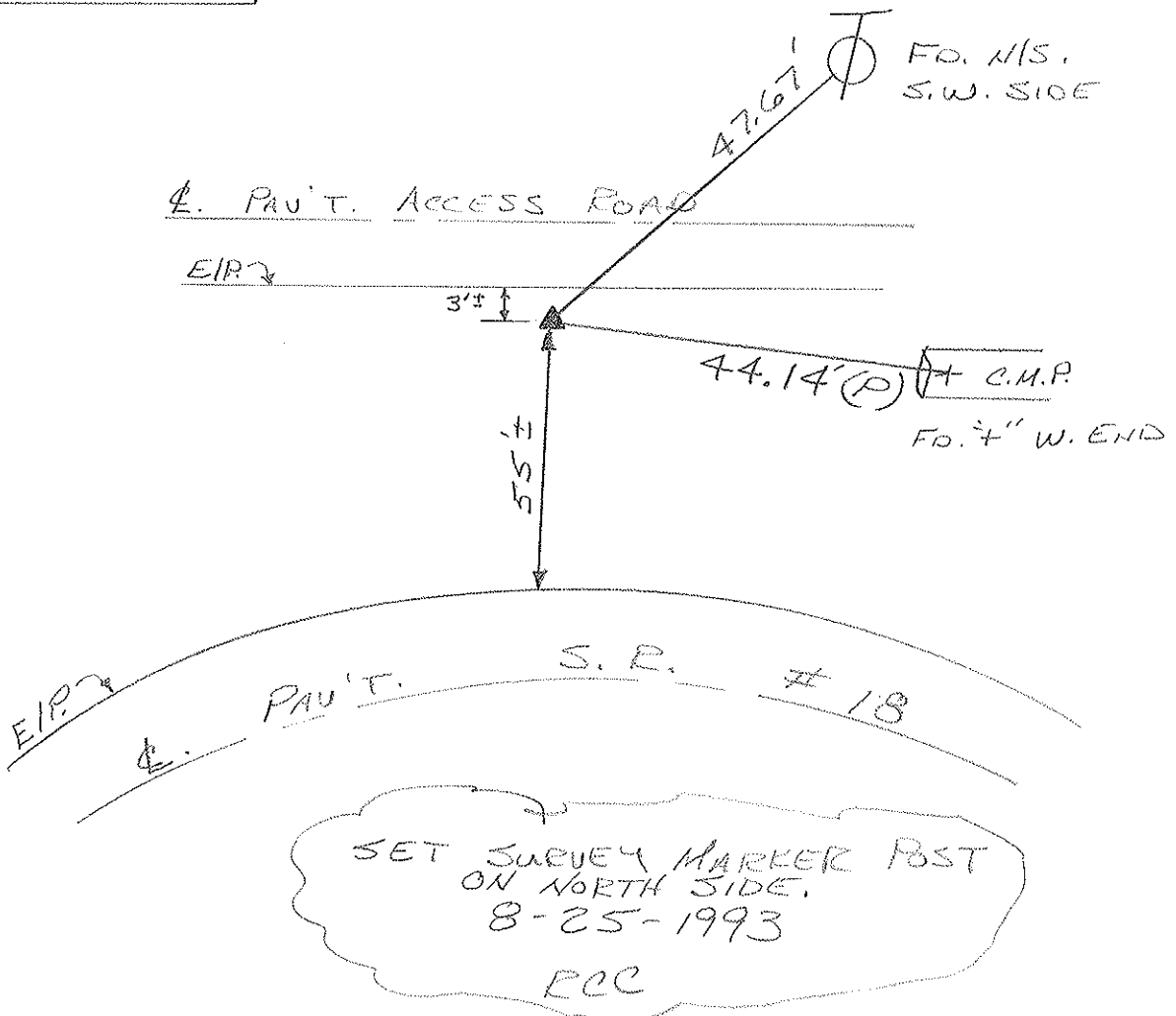


RECORD: 3-18-1970

P.I. STA. 55+86.85

$\Delta = 20^{\circ} 01' RT.$

FD. IRON PIN



PERSONNEL TITLE PERSONNEL TITLE

COUNTY *Seneca*

drawn 1/27/77
DATE checked 6/9/71

Ash

Cronin

Ripple

Anderson

S. R. #18 (S.H. 449)

WEATHER

SEC.

TEMP.

DESCRIPTION *Ties for Control Points - Tiffin to Republic*

JOB NO.

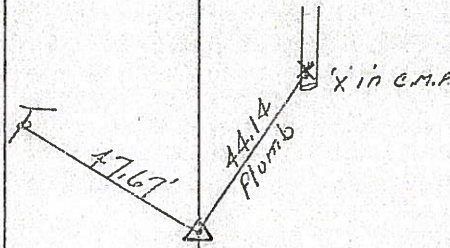
LEFT

CENTER LINE

RIGHT

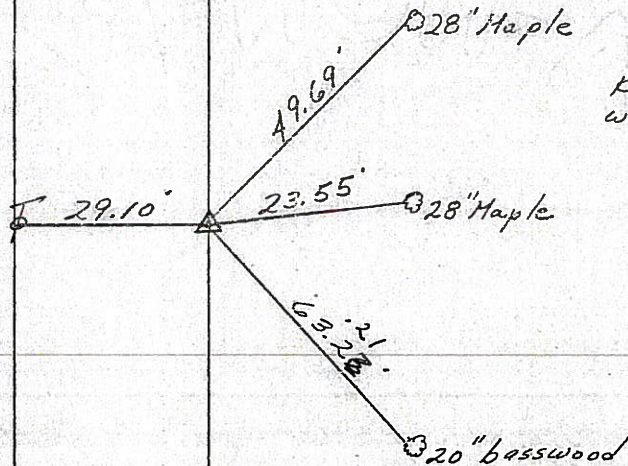
(54)

P.I.
 $\Delta = 20^{\circ} 01' \text{ Rt.}$
55+86.85
Fd. Iron Pin



(53)

Tics OK 3/18/76
P.I.
 $\Delta = 1^{\circ} 57' \text{ Lt.}$
39+56
Fd. R.R. spike $1\frac{1}{2}''$
below surface

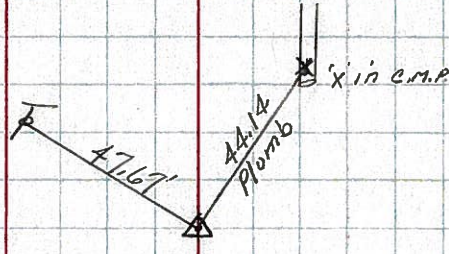


PERSONNEL	TITLE	PERSONNEL	TITLE	COUNTY	DATE	WEATHER	TEMP.
Ash				Seneca	drawn 1/27/72		
Cronin				S. R. #18 (S.H. 449)	checked 6/9/71		
Ripple							
Anderson							

DESCRIPTION Ties for Control Points - Tiffin to Republic JOB NO. _____

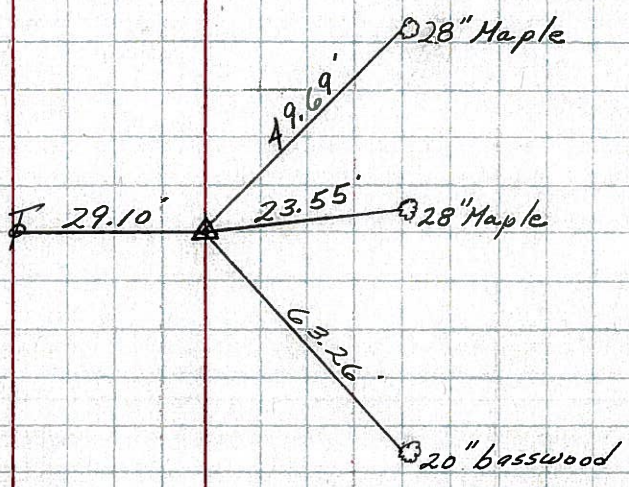
54

P.I.
 $\Delta = 20^{\circ} 01' \text{ Rt.}$
 55+86.85
 Fd. Iron Pin



53

P.I.
 $\Delta = 1^{\circ} 57' \text{ Lt.}$
 39+56
 Fd. R.R. spike $1\frac{1}{2}$ "
 below surface



PERSONNEL TITLE PERSONNEL TITLE

Schneider
 Barbour
 Redding
 Potts

COUNTY Seneca DATE 10-30-68

S. R. 18 WEATHER Fair

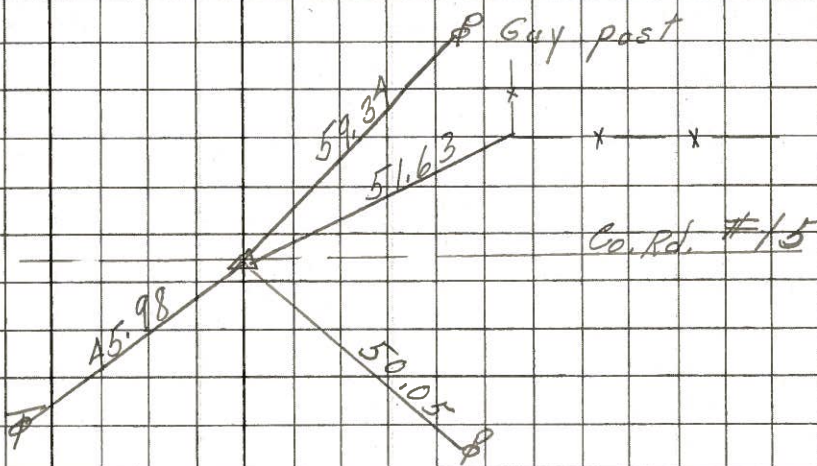
SEC. Tiffin to Republic TEMP. 40°

DESCRIPTION Ties for Control Points JOB NO.

LEFT CENTER LINE RIGHT

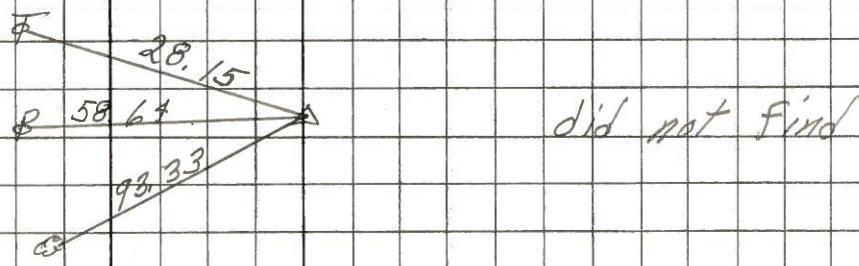
57

82+55
 $\Delta = 0^\circ 40' \text{ Rt.}$
 Co. Rd. North & South
 Small spk.
 8197



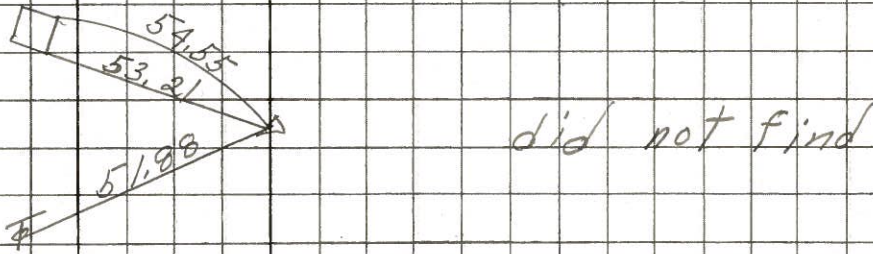
56

65+25.8
 $\Delta = 0^\circ 39' \text{ Lt.}$
 8146



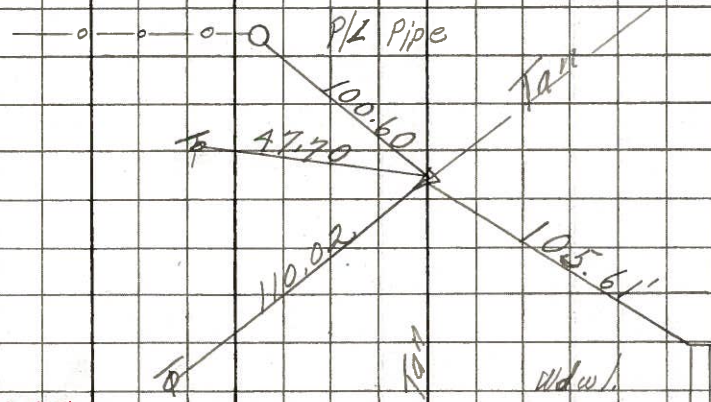
55

63+29.73
 8145



54

55+86.85
 $\Delta = 20^\circ 01' \text{ Rt.}$
 Iron Pin
 3.75' from edge
 Pavmt. Co. Rd.
 8144



PERSONNEL TITLE PERSONNEL TITLE COUNTY Seneca DATE 12-22-68
 PERSONNEL TITLE PERSONNEL TITLE S. R. 18 WEATHER
 Crew SEC. K TEMP.

DESCRIPTION S.H. 449 Tiffin to Republic JOB NO.
 LEFT CENTER LINE RIGHT

54

Sta 55+86.85
 $\Delta = 20^\circ 01' RT$
 Set iron pin
 Good ties
 3.75' from edge Pavmt.
~~#~~

8144

53

Sta 39+56
 $\Delta = 1^\circ 57' LT$
 Found R.R. spk. on top
~~#~~

8143

52

Fd RR. spk.
 on top

8142

51

Sta 15+00
 $\Delta = 0^\circ 05' RT$
 Fd P.K. Nail
 2" down
~~#~~

8141

50

Sta. 0+00
 Tiffin Corp.
 Found small RR. spk
 2" down
~~#~~

8140

