

O.D.O.T. DISTRICT 2 SURVEY OFFICE (USE ONLY)

PERSONNEL

REFERENCE NO. 55

SHEET 9 OF 12

NOTES CHENEY

DATE 7-2-1993

ROUTE SR 18

H.C. RIPPLE

WEATHER CLOUDY

COUNTY SENECA

R.C. BARBOUR

TEMP. 75°

TOWNSHIP CLINTON

GEYMAN

SECTION 21

DWG BY AUBLE PID 107060

T 2 N R 15 E

TYPE MONUMENT D.N.F.

ON SURFACE - BELOW -

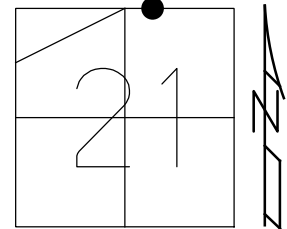
OFFSET \varnothing PAVEMENT - LT : RT

- TO - EDGE PAVEMENT

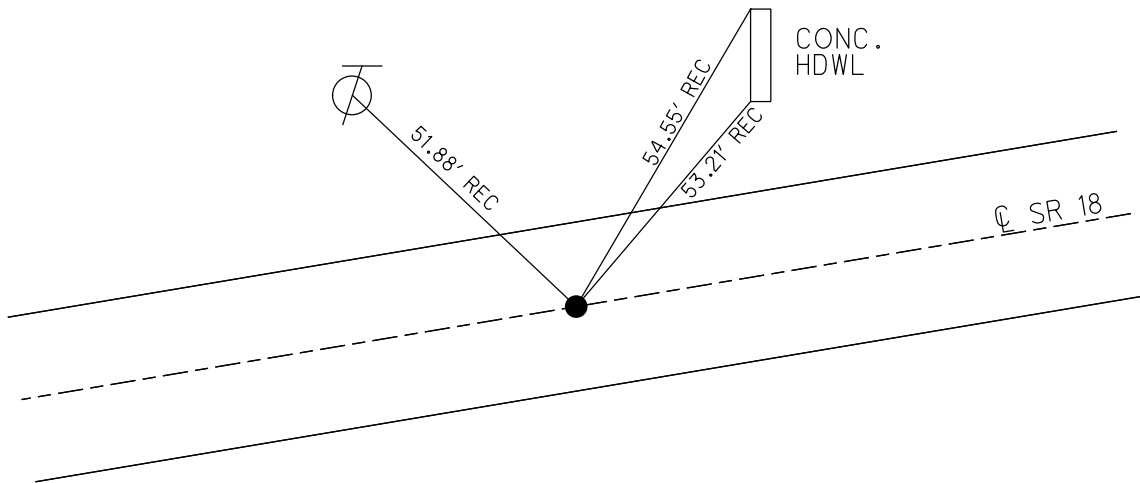
STATION: 877+56

HORIZ.DATUM: - GEOID: -

GRID: NORTHING: - EASTING: -



RECORD: P.I.
STA 63+29.73
DNF
12/22/65
3/18/76
7/2/1993, RCC
3/6/19, JFO



O.D.O.T. DISTRICT 2 SURVEY OFFICE

PERSONNEL

REFERENCE NO. 55

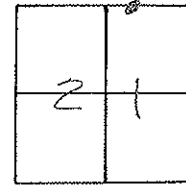
SHEET 7 OF 24

NOTES CHENEY
H.C. RIPPLE
R.C. BARBOUR
GERMAN

DATE 7-2-1993
WEATHER CLOUDY
TEMP. 75°

ROUTE #18
COUNTY SENECA
TOWNSHIP CLINTON
SECTION 21
T2N R15E

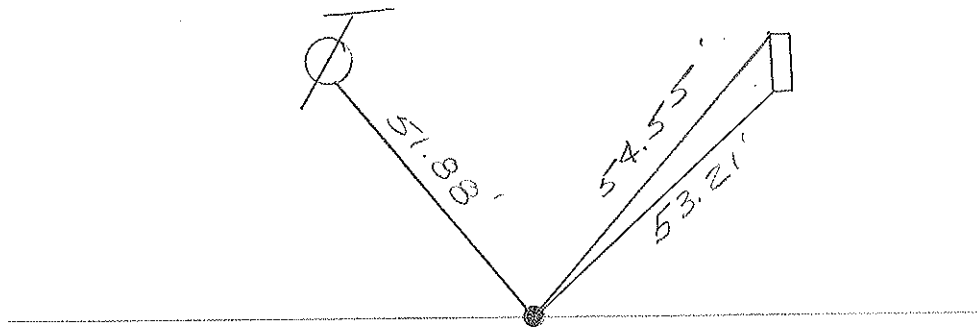
TYPE MONUMENT NOT FOUND
ON SURFACE - BELOW _____
LEFT - < PAV'T. - RIGHT _____
_____ TO _____ EDGE PAVEMENT
S.L.M. 877+56 ±



RECORD: 5-18-1976

STA. 63+29.73
* DID NOT FIND

NOT FOUND
7-2-1993
RCC



* NOTE: TIES ARE RECORD

PERSONNEL	TITLE	PERSONNEL	TITLE
Ash			
Cronin			
Ripple			
Anderson			

COUNTY Seneca

drawn 1/27/76

DATE checked 6/10/76

S. R. #18 (S.H. #449)

WEATHER

SEC. K

TEMP.

DESCRIPTION Ties for Control Points - Tiffin to Republic

JOB NO.

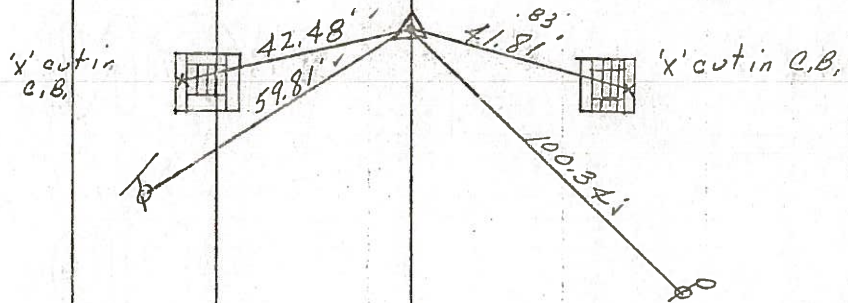
LEFT

CENTER LINE

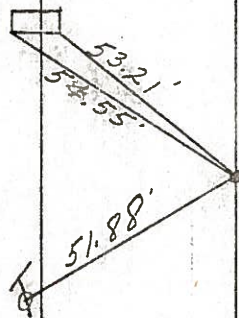
RIGHT

(56)
 P.I.
 $\Delta = 0^{\circ} 39' Lt.$
 65+25.8
 Fd. P.K. Nail on
 surface Reset
 small spike.
 Not set by State

retied 3/18/76
 Reset P.K. Nail & washer
 9/7/76



(55)
 63+29.73
 Did not find



PERSONNEL TITLE PERSONNEL TITLE

COUNTY Seneca

DATE checked 6/10/71

Ash
Cronin
Ripple
Anderson

S. R. #18 (S.H. #449)

WEATHER

SEC. K

TEMP.

DESCRIPTION Ties for Control Points - Tiffin to Republic

JOB NO.

LEFT

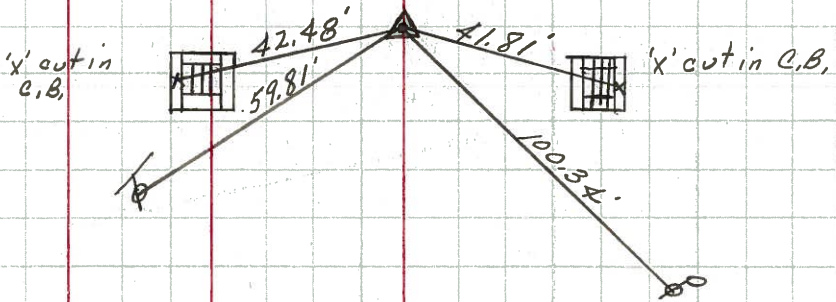
CENTER LINE

RIGHT



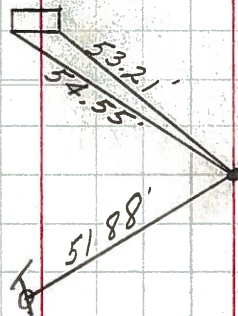
56

P.I.
 $\Delta = 0^{\circ} 39' Lt.$
65+25.8
Fd. P.K. Nail on
surface. Reset
small spike.
Not set by State



55

63+29.73
Did not find

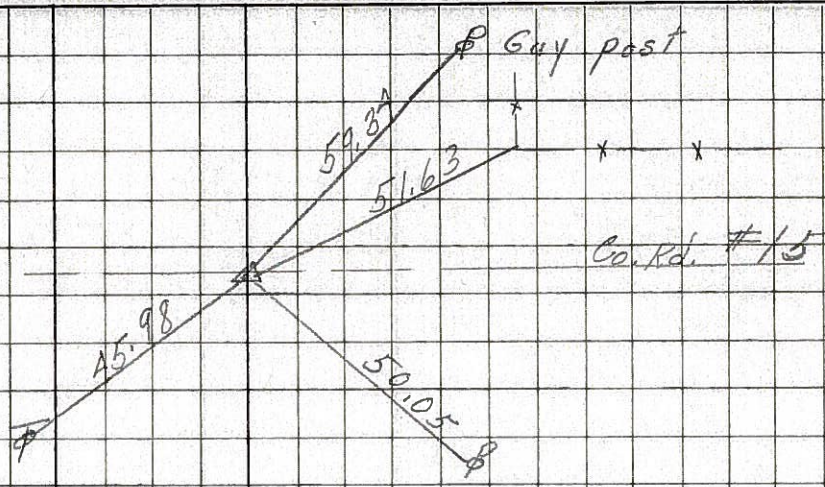


PERSONNEL	TITLE	PERSONNEL	TITLE	COUNTY	DATE
Schneider				Seneca	10-30-68
Barbour				S. R. 18	WEATHER Fair
Redding				SEC. Tiffin to Republic	TEMP. 40°
Potts					

DESCRIPTION *Ties for Control Points* JOB NO.

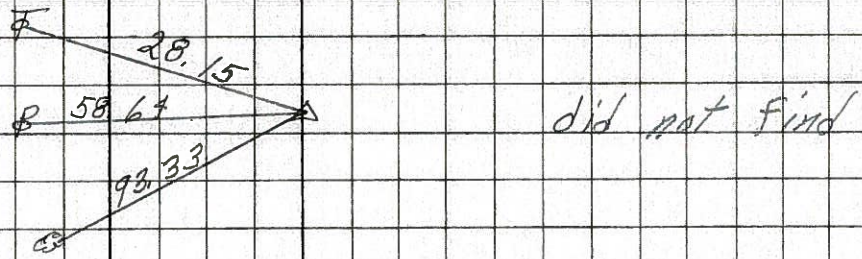
57

82+52
 $\Delta = 0^\circ 40' \text{ Rt.}$
 Co. Rd. North & South
 Small SPK.
8197



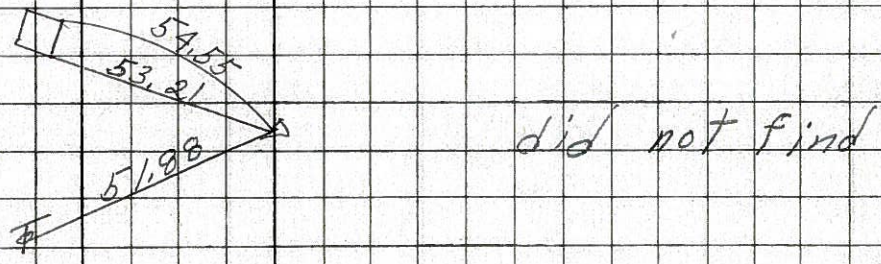
56

65+25.8
 $\Delta = 0^\circ 39' \text{ Lt.}$
8146



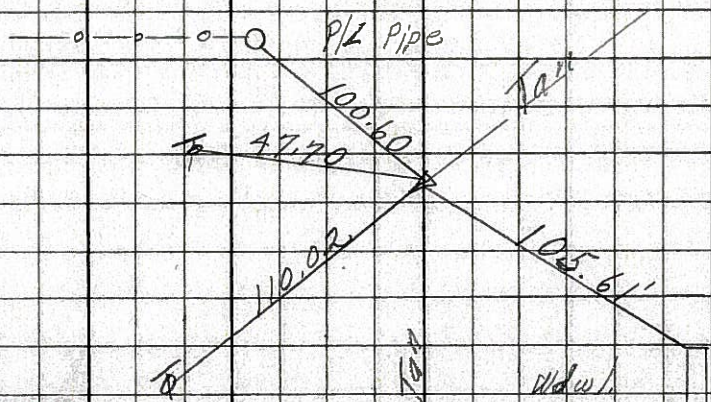
55

63+29.73
8145



54

55+86.85
 $\Delta = 20^\circ 01' \text{ Rt.}$
 1" or Pin
 3.75' from edge
 Pavmt Co. Rd.
8144



PERSONNEL TITLE PERSONNEL TITLE

COUNTY Seneca DATE 12-22-63

S. R. #18 WEATHER

SEC. K TEMP.

DESCRIPTION Tiffin - Republic JOB NO.

LEFT CENTER LINE RIGHT

(58)

Sta. 108+22.5
 $\Delta = 0^\circ 25' \text{ Lt.}$
 Found P.K. Nail
 1 1/2" below surface

75.45 N. 14" Elm
 69.24 B.M. Nail
 75.32 N.W. Tel. pole
 32.67 N.E. Guard Rail Post
 40.58 N.W. " " "
 23.79 S.W. " " "

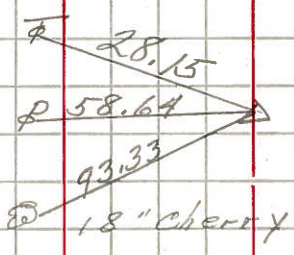
~~8148~~
 8148

(57)

Sta. 82+55
 $\Delta = 0^\circ 40' \text{ Rt.}$
 Co. Rd. North & South
 Found R.R. spk.

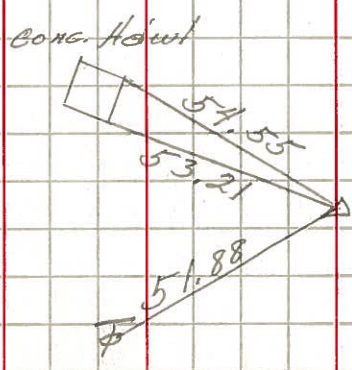
59.34 S.E. Guy Pole
 50.05 S.W. Power Pole
 51.63 S.E.S. cor. E. Post
 45.98 N.W. Tel. pole

~~8147~~
 8147



(56)

Sta. 65+25.8
 $\Delta = 0^\circ 39' \text{ Lt.}$
 did not find



~~8146~~
 8146

(55)

Sta. 63+29.73
 did not find

~~8145~~
 8145