

O.D.O.T. DISTRICT 2 SURVEY OFFICE (USE ONLY)

PERSONNEL

REFERENCE NO. 56

SHEET 16 OF 18

NOTES RHOADES DATE 9/8/21

H.C. AUBLE WEATHER SUNNY

R.C. NIESE TEMP. 73°

ROUTE SR 18

COUNTY SENECA

TOWNSHIP CLINTON

SECTION 21

DWG BY RHOADES PID PVTRAIN

T 2 N R 15 E

TYPE MONUMENT MAG/WASHER

ON SURFACE - ~~BELOW~~ ON

OFFSET ☉ PAVEMENT ON LT : RT

10.5' TO RT EDGE PAVEMENT

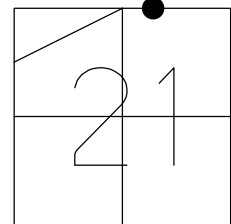
STATION: 879+60

HORZ.DATUM: NAD83 (2011)

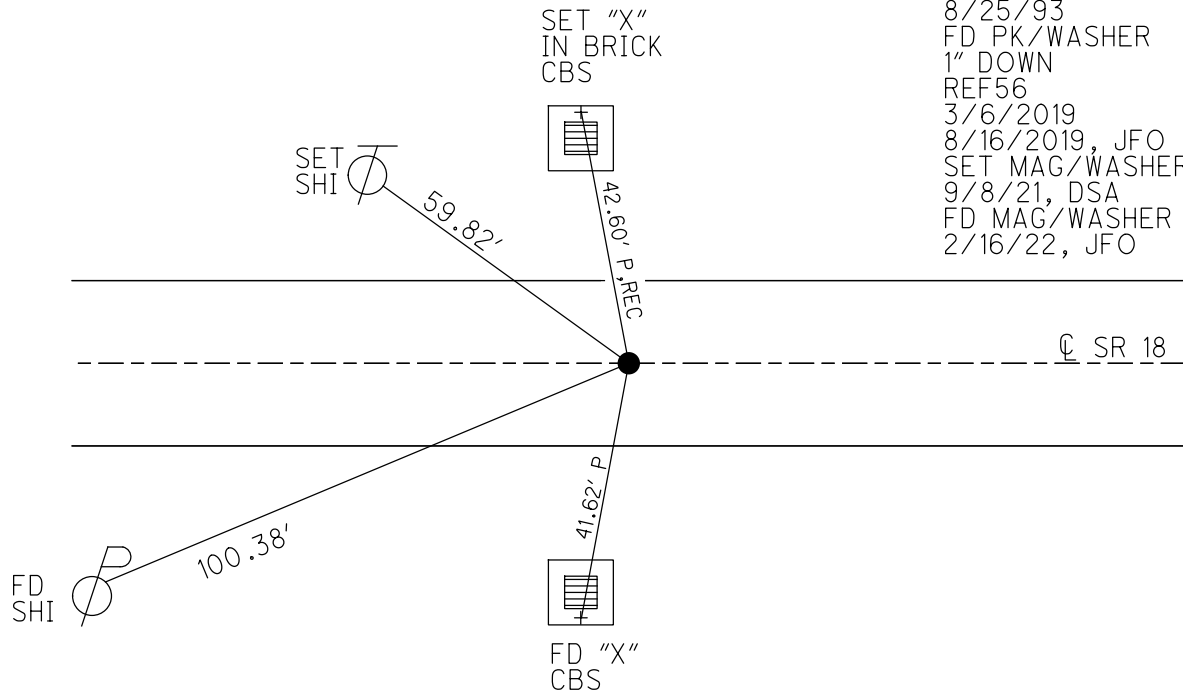
GEOID: 2012A

GRID: NORTHING: 531661.704

EASTING: 1792937.341



RECORD: P.I.  
 STA. 65+25.8  
 $\Delta = 0^\circ 39' \text{ LT}$   
 FD SM.R.R.SPIKE  
 ATOP P.K.NAIL  
 3/18/76  
 SET P.K./WASHER  
 9/7/76  
 FD P.K./WASHER  
 7/2/93, RCC  
 SET P.K./WASHER  
 8/25/93  
 FD PK/WASHER  
 1" DOWN  
 REF56  
 3/6/2019  
 8/16/2019, JFO  
 SET MAG/WASHER  
 9/8/21, DSA  
 FD MAG/WASHER  
 2/16/22, JFO



O.D.O.T. DISTRICT 2 SURVEY OFFICE (USE ONLY)

PERSONNEL

REFERENCE NO. 56

SHEET 10 OF 12

NOTES CHENEY

DATE 7-2-1993

ROUTE SR 18

H.C. RIPPLE

WEATHER CLOUDY

COUNTY SENECA

R.C. BARBOUR

TEMP. 75°

TOWNSHIP CLINTON

GEYMAN

SECTION 21

DWG BY AUBLE PID 107060

T 2 N R 15 E

TYPE MONUMENT P.K./WASHER

ON SURFACE - ~~BELOW~~ ON

OFFSET Q PAVEMENT ON LT : RT

10.5' TO RT EDGE PAVEMENT

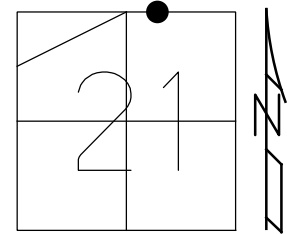
STATION: 879+60

HORZ.DATUM: NAD83 (2011)

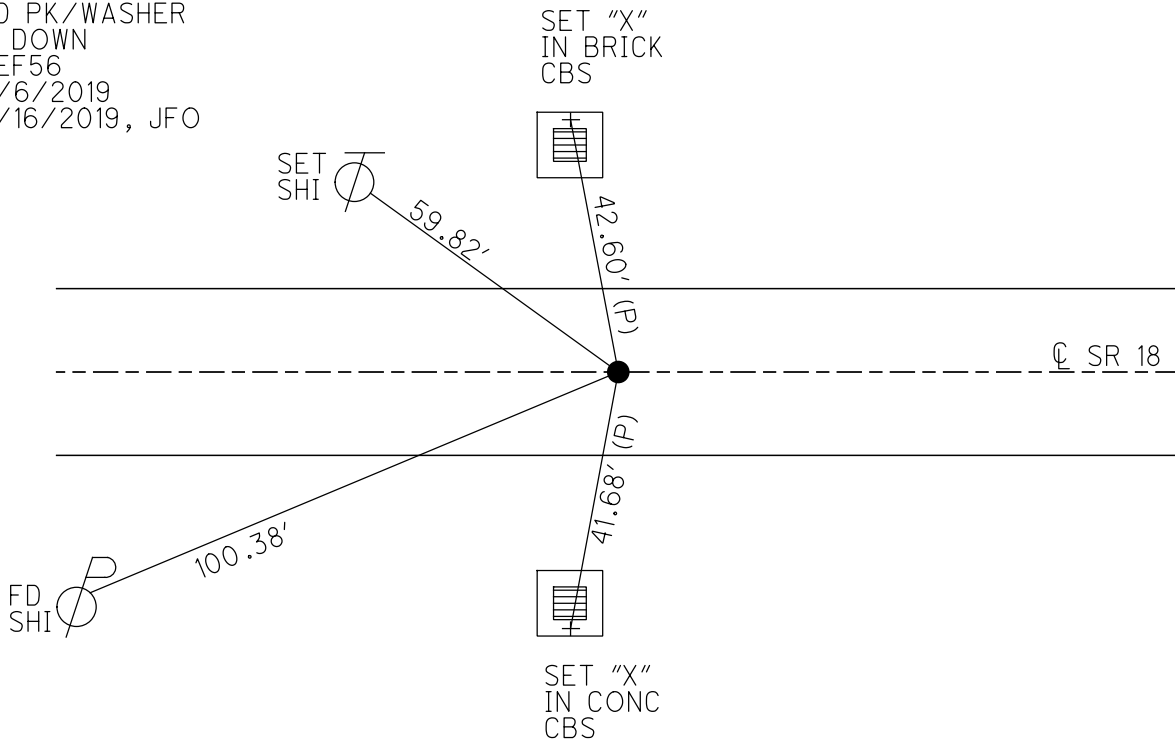
GEOID: 2012A

GRID: NORTHING: 531661.704

EASTING: 1792937.341



RECORD: P.I.  
 STA. 65+25.8  
 $\Delta = 0^{\circ} 39' \text{ LT}$   
 FD SM.R.R.SPIKE  
 ATOP P.K.NAIL  
 3/18/76  
 SET P.K./WASHER  
 9/7/76  
 SET P.K./WASHER  
 8/25/1993  
 FD PK/WASHER  
 1" DOWN  
 REF56  
 3/6/2019  
 8/16/2019, JFO



# O.D.O.T. DISTRICT 2 SURVEY OFFICE

PERSONNEL

REFERENCE NO. 56

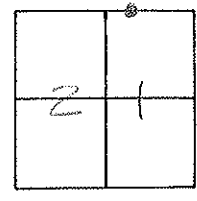
SHEET 8 OF 24

NOTES CHENEY  
 H.C. RIPPLE  
 R.C. BARBOUR  
GEYMAN

DATE 7-2-1993  
 WEATHER CLOUDY  
 TEMP. 75°

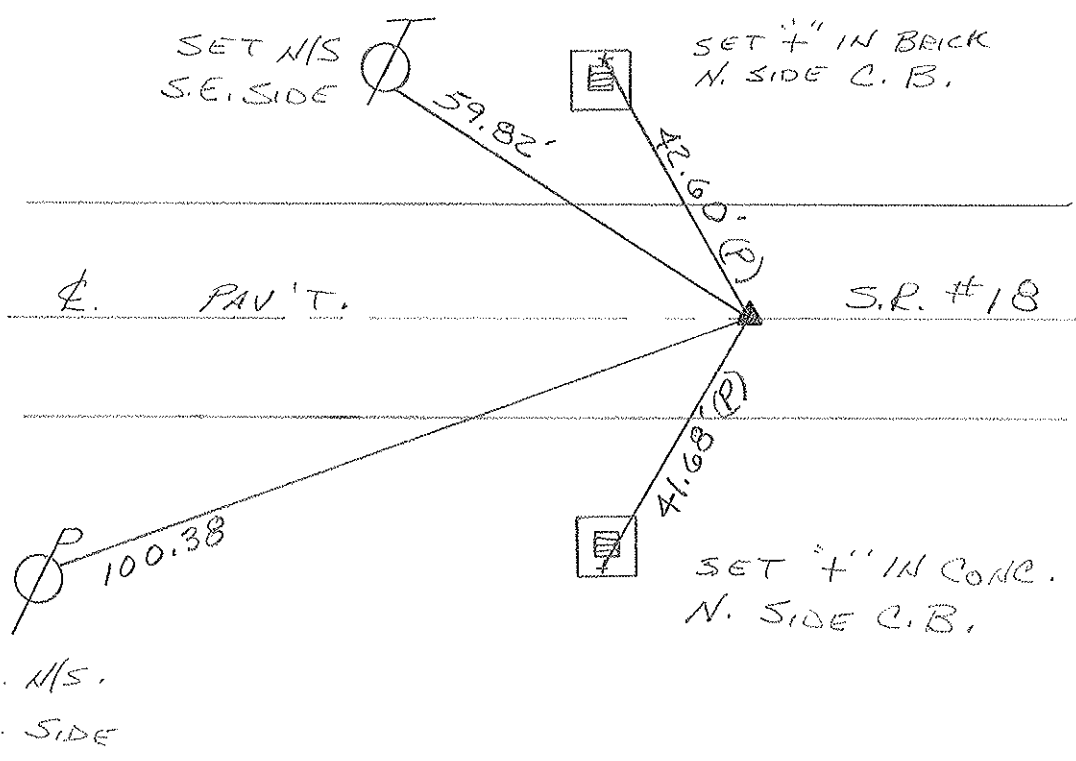
ROUTE #18  
 COUNTY SENECA  
 TOWNSHIP CLINTON  
 SECTION 21  
 T2N R15E

TYPE MONUMENT PK/WASHER  
 ON SURFACE - ~~BEL~~ ON  
~~LEFT - C. PAV'T. - RIGHT ON~~  
10.5 TO RT. EDGE PAVEMENT  
 S.L.M. 879+60



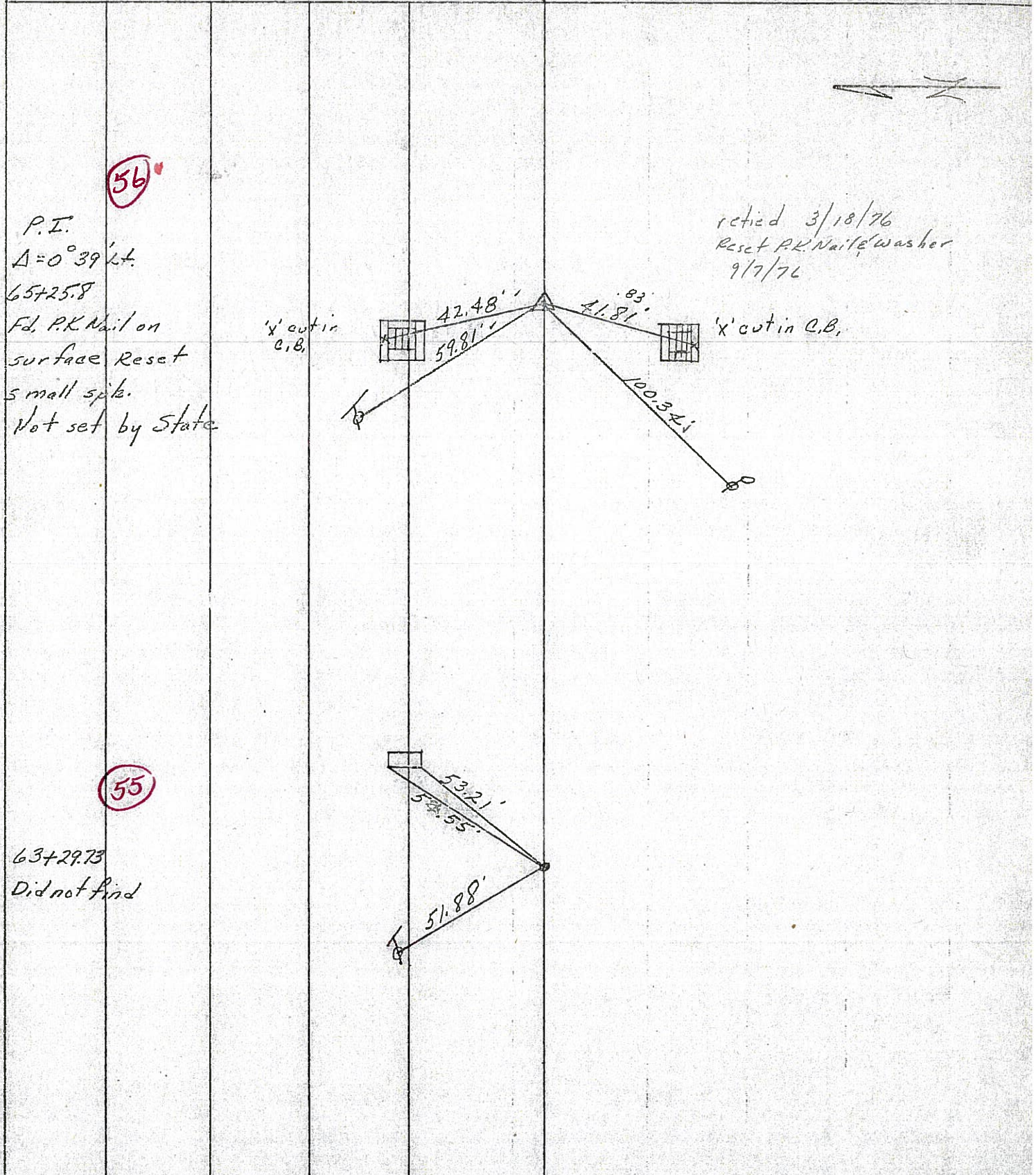
RECORD: 3-18-1976  
 P.I. STA. 65+25.8 Δ = 0°-39' LT.  
 SMALL SPK. ATOP  
 PK: NAIL (NOT SET BY STATE)  
 SET PK/WASHER (9-7-76)

SET PK/WASHER  
 8-25-1993  
 RCC



PERSONNEL	TITLE	PERSONNEL	TITLE	COUNTY	DATE	WEATHER	TEMP.
Ash				Seneca	checked 6/10/76		
Cronin				S. R. #18 (S.H. #449)			
Ripple							
Anderson				SEC. K			

DESCRIPTION Ties for Control Points - Tiffin to Republic JOB NO. \_\_\_\_\_



56

retied 3/18/76  
Reset P.K. Nail & washer  
9/7/76

P.I.  
 $\Delta = 0^{\circ} 39' \text{ Lt.}$   
65+25.8  
Fd. P.K. Nail on  
surface Reset  
small spike.  
Not set by State

55

63+29.73  
Did not find

'x' cut in  
C.B.

'x' cut in C.B.

42.48'

59.81'

41.81'

100.34'

53.21'

52.55'

51.88'

PERSONNEL TITLE PERSONNEL TITLE

COUNTY Seneca

DATE checked 6/10/71

Ash

S. R. #18 (S.H. #449)

WEATHER

Cronin

SEC. K

TEMP.

Ripple

Anderson

DESCRIPTION Ties for Control Points - Tiffin to Republic

JOB NO.

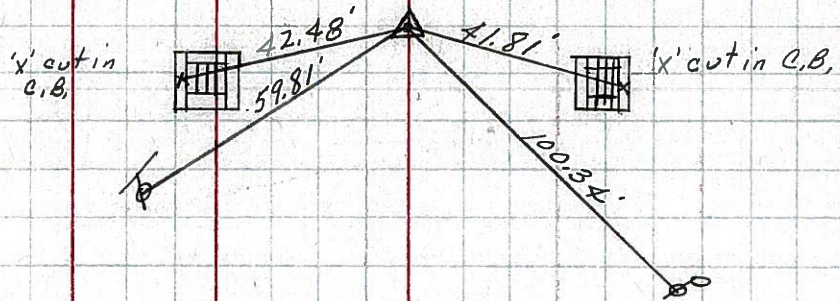
LEFT

CENTER LINE

RIGHT

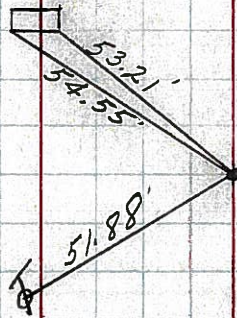
56

P.I.  
A = 0° 39' Lt.  
65+25.8  
Fd. P.K. Nail on  
surface Reset  
small spike.  
Not set by State



55

63+29.73  
Did not find

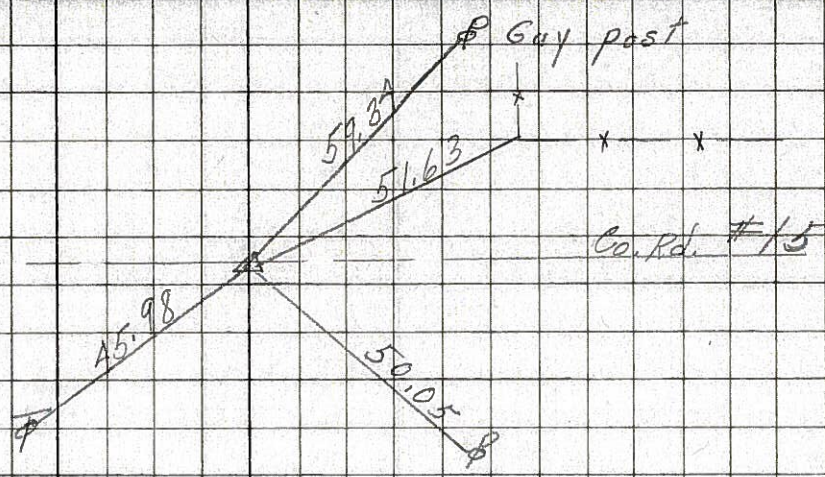


PERSONNEL	TITLE	PERSONNEL	TITLE	COUNTY	DATE	WEATHER	TEMP.
Schneider				Seneca	10-30-68	Fair	40°
Barbour				S. R. 18			
Redding				SEC. Tiffin to Republic			
Potts							

DESCRIPTION Ties for Control Points JOB NO.

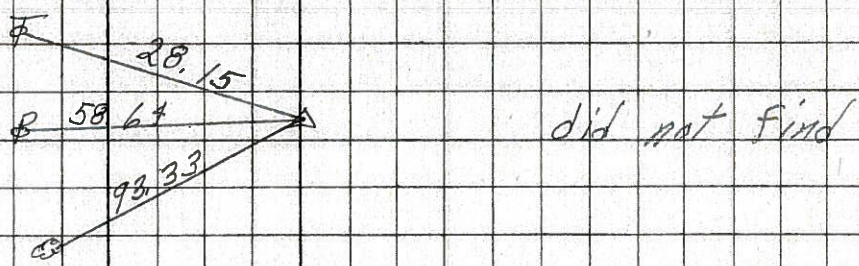
57

82+35  
 $\Delta = 0^\circ 40' \text{ Rt.}$   
 Co. Rd. North & South  
 Small spk.  
**8197**



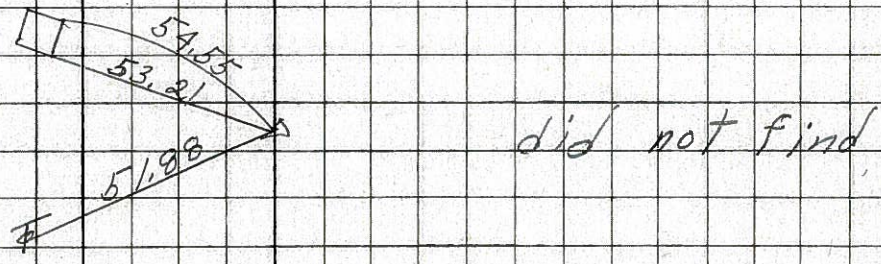
56

65+25.8  
 $\Delta = 0^\circ 39' \text{ Lt.}$   
**8146**



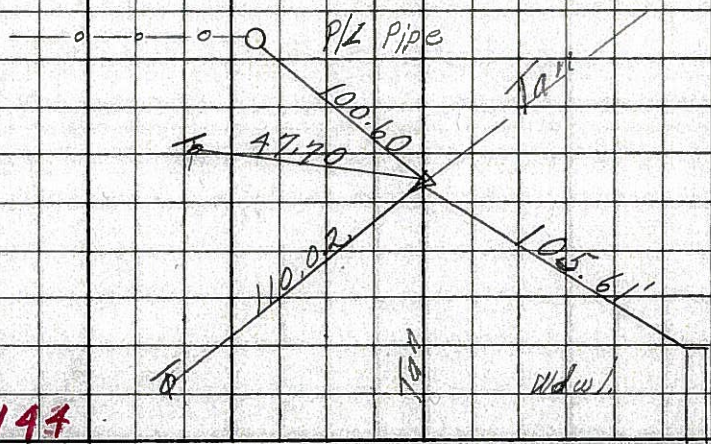
55

63+29.73  
**8145**



54

55+86.85  
 $\Delta = 20^\circ 01' \text{ Rt.}$   
 Iron Pin  
 3.75' from edge  
 Pavmt Co. Rd.  
**8144**



PERSONNEL TITLE PERSONNEL TITLE

COUNTY Seneca DATE 12-22-66

S. R. #18 WEATHER

SEC. X TEMP.

DESCRIPTION Tiffin - Republic LEFT CENTER LINE RIGHT JOB NO.

58

Sta. 108+22.5  
 $\Delta = 0^\circ 25' Lt.$   
Found P.K. Nail  
1 1/2" below surface

# ~~8148~~  
8148

75.45 N. 14" Elm  
69.24 B.M. Nail  
75.32 N.W. Tel. pole  
32.67 N.E. Guard Rail Posi  
40.58 N.W. " " "  
23.79 S.W. " " "

57

Sta. 82+55  
 $\Delta = 0^\circ 40' Rt.$   
Co. Rd. North & South  
Found R.R. spk.

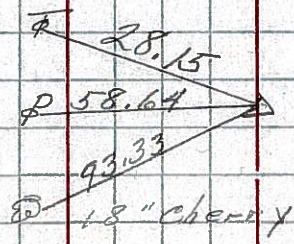
# ~~8147~~  
8147

59.34 S.E. Guy Pole  
50.05 S.W. Power Pole  
51.63 S.E.S. cor. F Post  
45.98 N.W. Tel. pole

56

Sta. 65+25.8  
 $\Delta = 0^\circ 39' Lt.$   
did not find

# ~~8146~~  
8146



55

Sta. 63+29.73  
did not find

# ~~8145~~  
8145

