

O.D.O.T. DISTRICT 2 SURVEY OFFICE (USE ONLY)

PERSONNEL

REFERENCE NO. 57

SHEET 17 OF 18

NOTES RHOADES DATE 9/8/21  
 H.C. AUBLE WEATHER SUNNY  
 R.C. NIESE TEMP. 73°

ROUTE SR 18  
 COUNTY SENECA  
 TOWNSHIP CLINTON  
 SECTION 21

DWG BY RHOADES PID PVTRAIN

T 2 N R 15 E

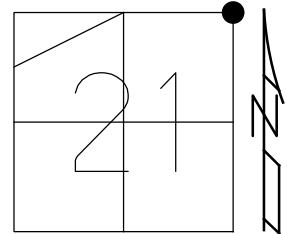
TYPE MONUMENT P.K.SHANK

~~ON SURFACE~~ - BELOW 2"

OFFSET 0.5' LT : ~~RT~~

10.5' TO RT EDGE PAVEMENT

STATION: 896+88



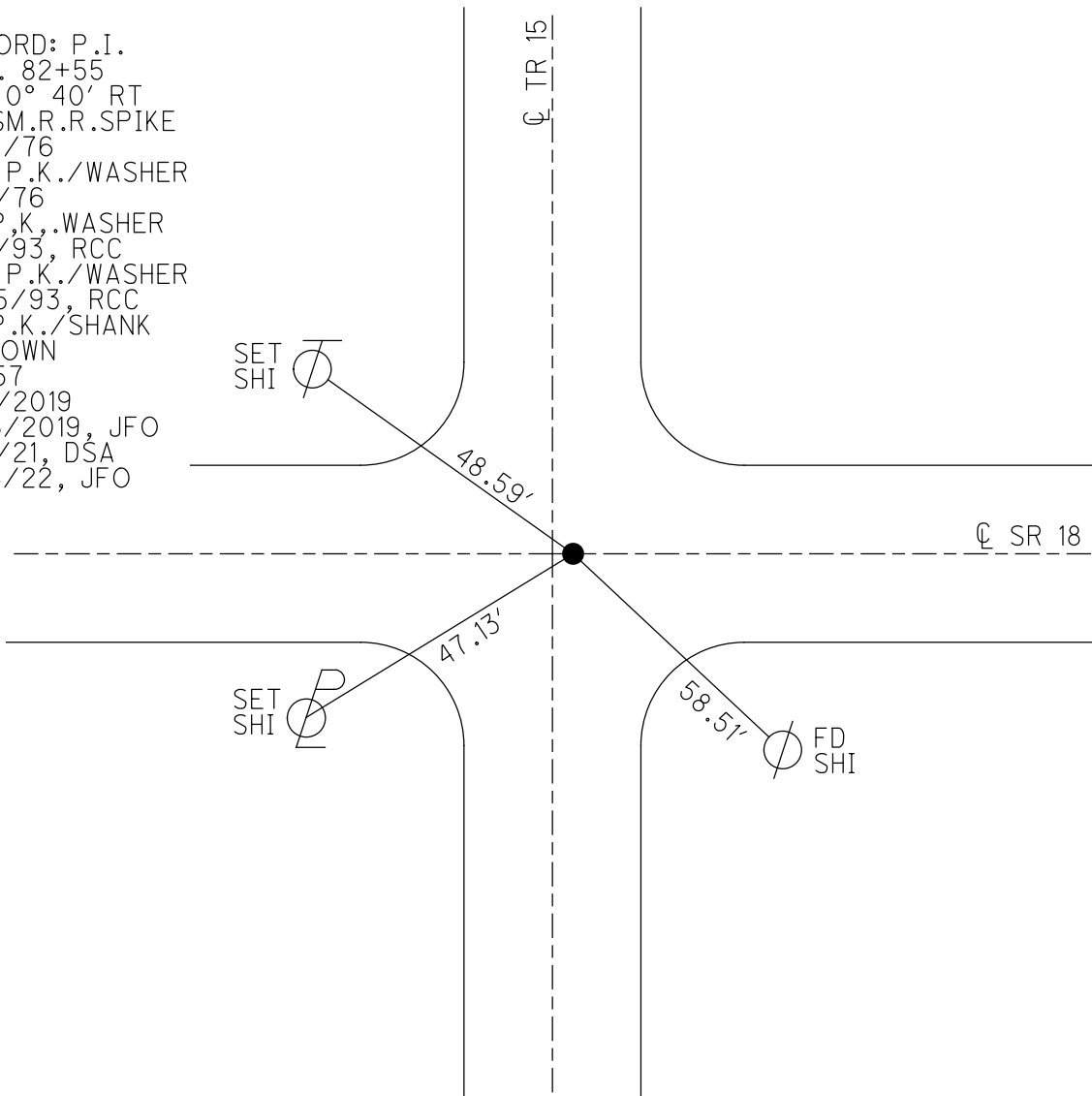
HORZ.DATUM: NAD83 (2011)

GEOID: 2012A

GRID: NORTHING: 531680.046

EASTING: 1794664.848

RECORD: P.I.  
 STA. 82+55  
 $\Delta = 0^\circ 40' RT$   
 FD SM.R.R.SPIKE  
 3/18/76  
 SET P.K./WASHER  
 9/7/76  
 FD P.K., WASHER  
 7/2/93, RCC  
 SET P.K./WASHER  
 8/25/93, RCC  
 FD P.K./SHANK  
 2" DOWN  
 REF57  
 3/6/2019  
 8/16/2019, JFO  
 9/8/21, DSA  
 2/16/22, JFO



O.D.O.T. DISTRICT 2 SURVEY OFFICE (USE ONLY)

PERSONNEL

REFERENCE NO. 57

SHEET 11 OF 12

NOTES CHENEY

DATE 7-2-1993

ROUTE SR 18

H.C. RIPPLE

WEATHER CLOUDY

COUNTY SENECA

R.C. BARBOUR

TEMP. 75°

TOWNSHIP CLINTON

GEYMAN

SECTION 21

DWG BY AUBLE PID 107060

T 2 N R 15 E

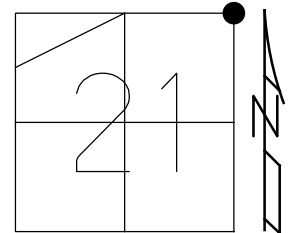
TYPE MONUMENT P.K./WASHER

ON SURFACE - ~~BELOW~~ ON

OFFSET ☉ PAVEMENT ON LT : RT

10.5' TO RT EDGE PAVEMENT

STATION: 896+88



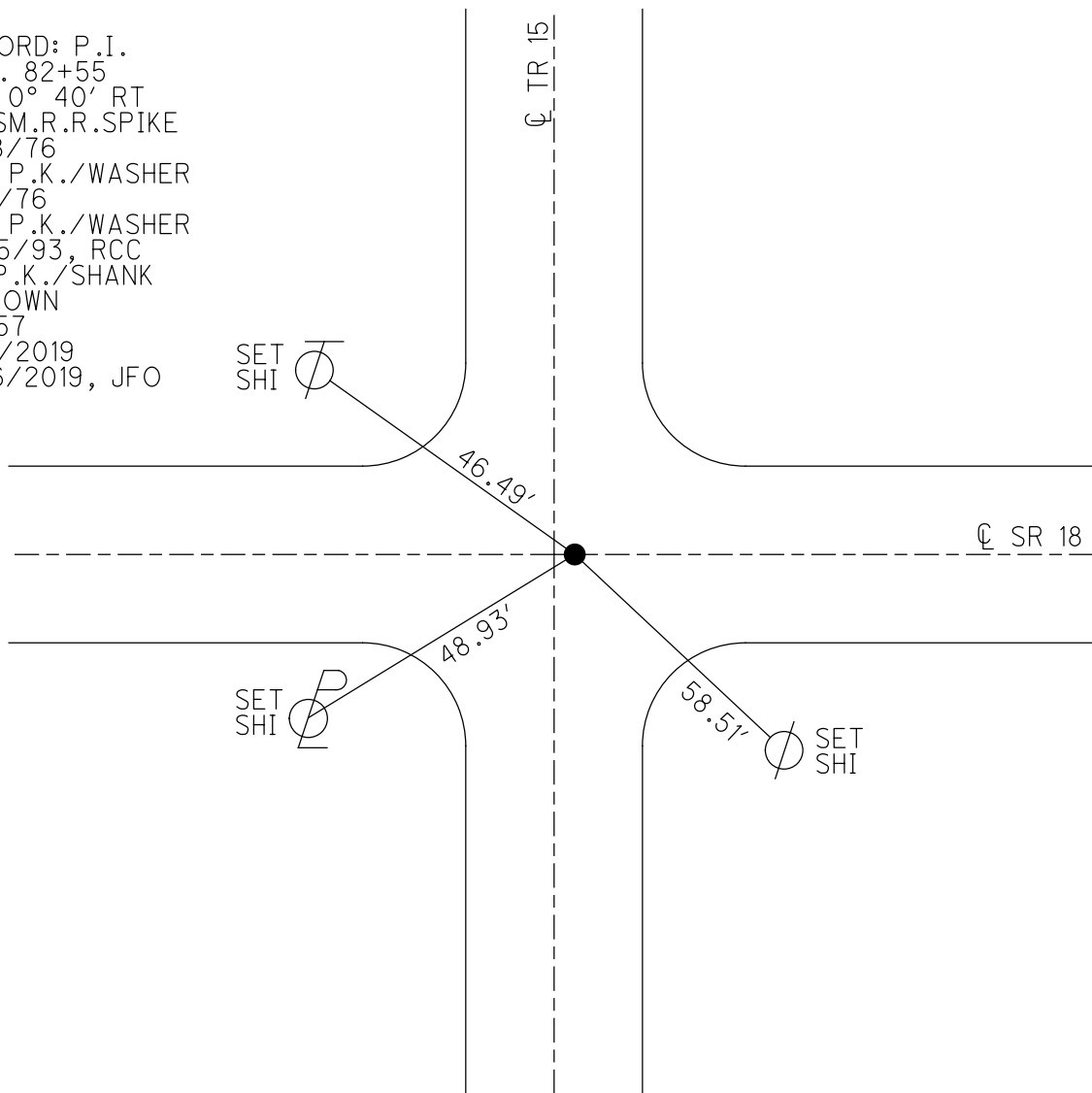
HORZ.DATUM: NAD83 (2011)

GEOID: 2012A

GRID: NORTHING: 531680.046

EASTING: 1794664.848

RECORD: P.I.  
 STA. 82+55  
 $\Delta = 0^\circ 40' RT$   
 FD SM.R.R.SPIKE  
 3/18/76  
 SET P.K./WASHER  
 9/7/76  
 SET P.K./WASHER  
 8/25/93, RCC  
 FD P.K./SHANK  
 2" DOWN  
 REF57  
 3/6/2019  
 8/16/2019, JFO



# O.D.O.T. DISTRICT 2 SURVEY OFFICE

PERSONNEL

REFERENCE NO. 57

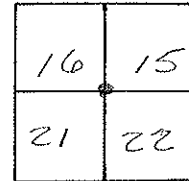
SHEET 9 OF 24

NOTES CHENEY  
 H.C. RIPPLE  
 R.C. BARBOUR  
GEYMAN

DATE 7-2-1993  
 WEATHER Cloudy  
 TEMP. 75°

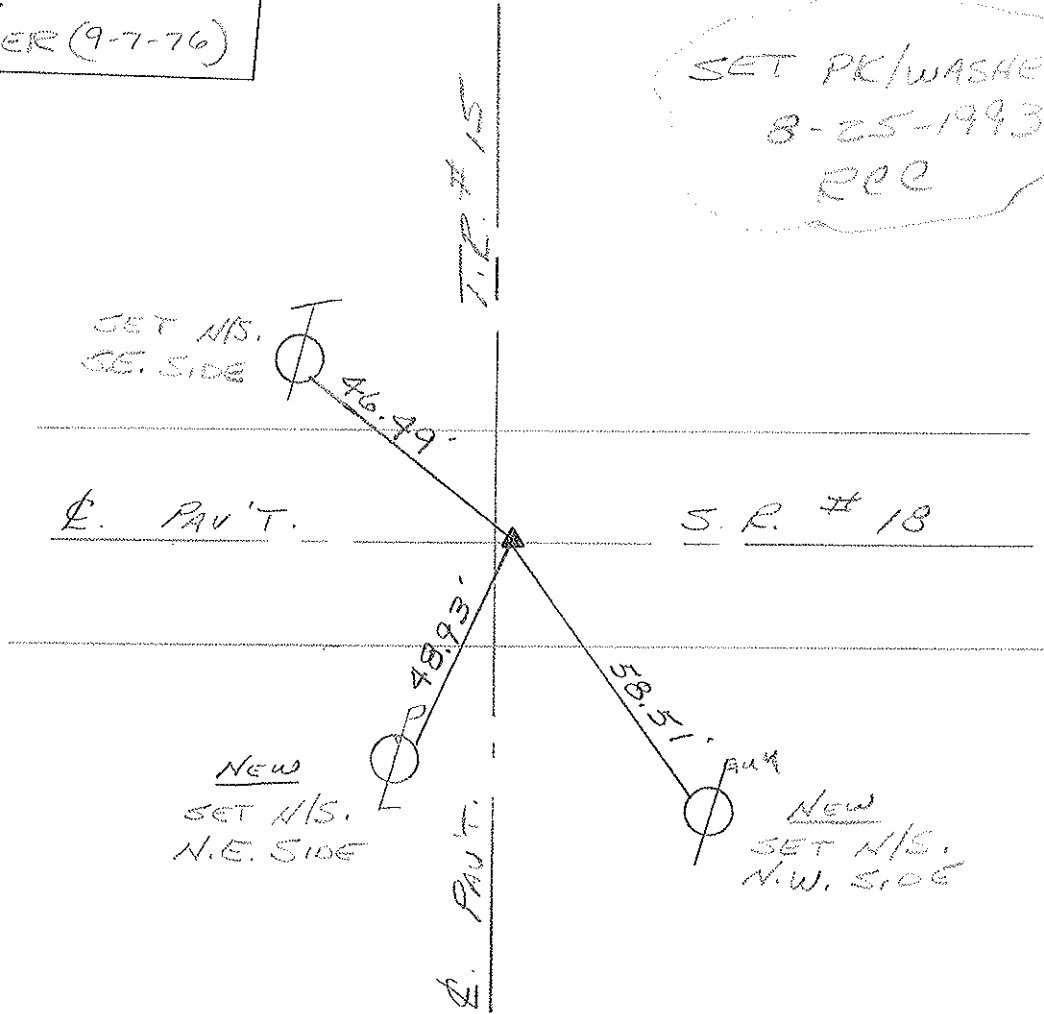
ROUTE #18  
 COUNTY SENECA  
 TOWNSHIP CLINTON  
 SECTION 21 & 22  
T 2 N R 15 E

TYPE MONUMENT PK/WASHER  
 ON SURFACE - BELOW ON  
~~LEFT~~ - Q PAV'T. - RIGHT ON (E.G. T.R.#15)  
10.5 TO LT. EDGE PAVEMENT  
 S.L.M. 896+88



RECORDED: 3-18-1976  
 P.I. STA. 82+55  
 $\Delta = 0^{\circ}40' RT.$   
 FD. RR. SAK.  
 SET PK/WASHER (9-7-76)

SET PK/WASHER  
8-25-1993  
 REC



PERSONNEL TITLE PERSONNEL TITLE

COUNTY *Seneca*

Drawn 1/27/74

DATE checked 6/10/74

*Ash*

*Cronin*

*Ripple*

*Anderson*

S. R. #18 (S.H. #449)

WEATHER

SEC. *K*

TEMP.

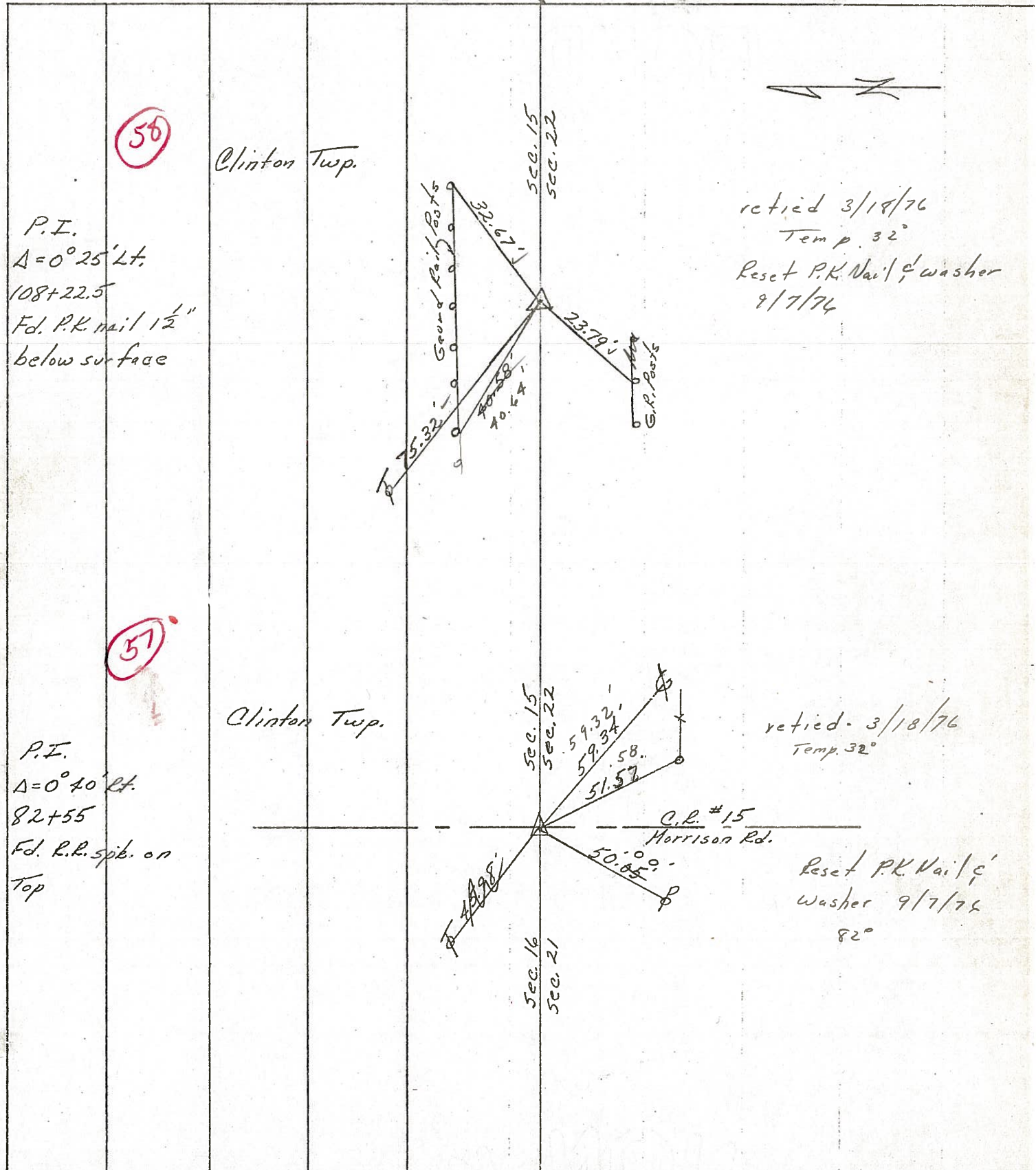
DESCRIPTION *Ties for Control Points - Tiffin to Republic*

JOB NO.

LEFT

CENTER LINE

RIGHT



PERSONNEL TITLE PERSONNEL TITLE

COUNTY Seneca

drawn 1/27/72

Ash

DATE checked 6/10/71

Cronin

S. R. #18 (S.H. #449)

WEATHER

Ripple

SEC. K

TEMP.

Anderson

DESCRIPTION Ties for Control Points - Tiffin to Republic

JOB NO.

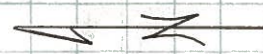
LEFT

CENTER LINE

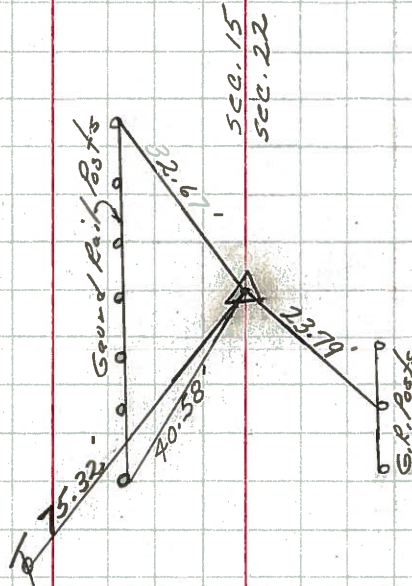
RIGHT

58

Clinton Twp.



P.I.  
 $\Delta = 0^\circ 25' \text{ Lt.}$   
 108+22.5  
 Fd. P.K. nail  $1\frac{1}{2}''$   
 below surface

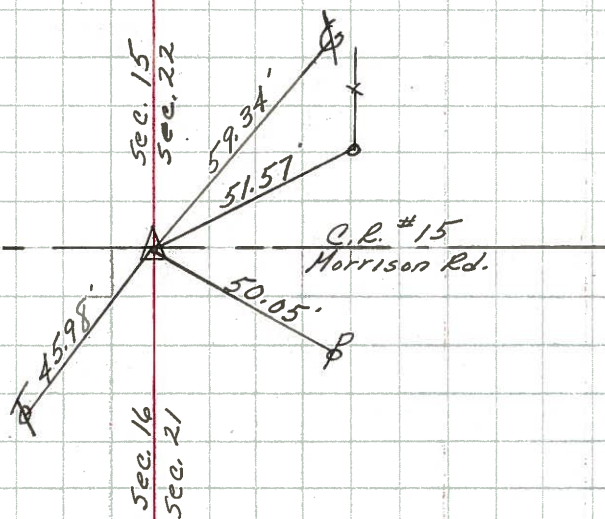


57

4

Clinton Twp.

P.I.  
 $\Delta = 0^\circ 40' \text{ Lt.}$   
 82+55  
 Fd. R.R. spk. on  
 Top



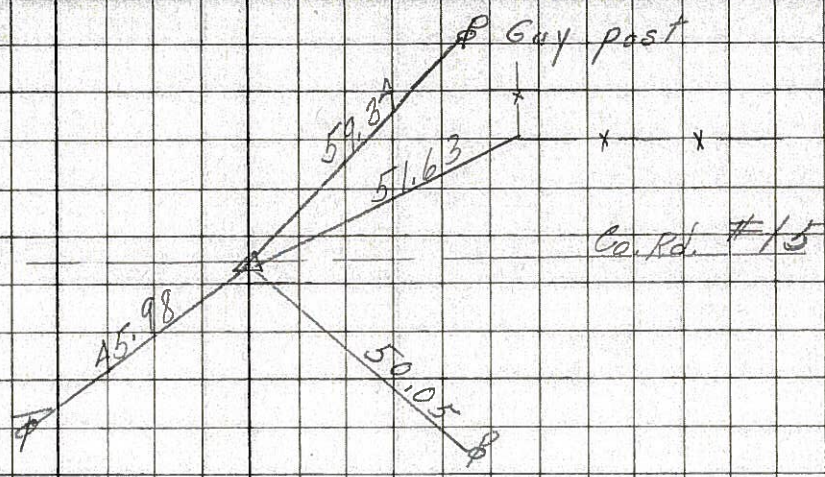


PERSONNEL	TITLE	PERSONNEL	TITLE	COUNTY	DATE	WEATHER	TEMP.
Schneider				Seneca	10-30-68	Fair	40°
Barbour				S. R. 18			
Reading				SEC. Tiffin to Republic			
Potts							

DESCRIPTION Ties for Control Points JOB NO. \_\_\_\_\_

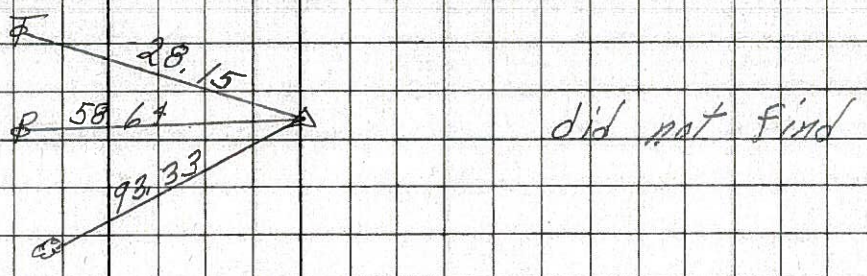
57

82+35  
 $\Delta = 0^\circ 40' \text{ Rt.}$   
 Co. Rd. North & South  
 Small spk.  
**8197**



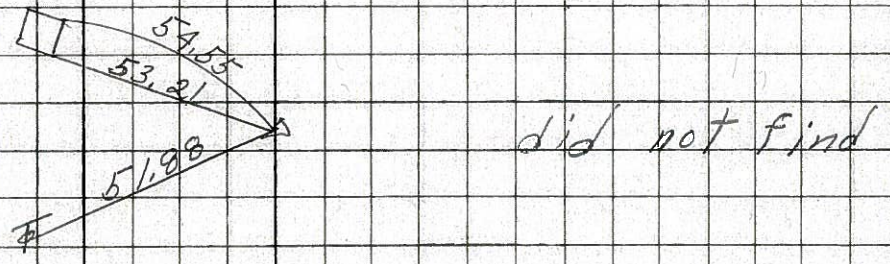
56

65+25.8  
 $\Delta = 0^\circ 39' \text{ Lt.}$   
**8146**



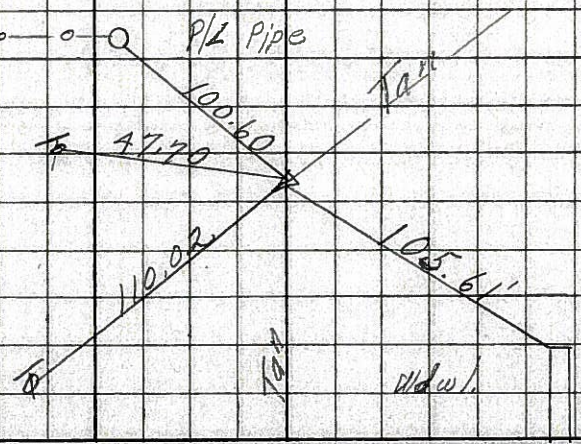
55

63+29.73  
**8145**



54

55+86.85  
 $\Delta = 20^\circ 01' \text{ Rt.}$   
 Iron Pin  
 3.75' from edge  
 Pavmt Co. Rd.  
**8144**





PERSONNEL TITLE PERSONNEL TITLE

COUNTY Seneca DATE 12-22-63

S. R. #18 WEATHER

SEC. K TEMP.

DESCRIPTION Tiffin - Republic LEFT CENTER LINE RIGHT JOB NO.

58

Sta. 108+22.5  
Δ = 0° 25' Lt.  
Found P.K. Nail  
1 1/2' below surface

# ~~8148~~  
8148

75.45 N. 14" Elm  
69.24 B.M. Nail  
75.32 N.W. Tel. pole  
32.67 N.E. Guard Rail Posi  
40.58 N.W. " " "  
23.79 S.W. " " "

57

Sta. 82+55  
Δ = 0° 40' Rt.  
Co. Rd. North & South  
Found R.R. spk.

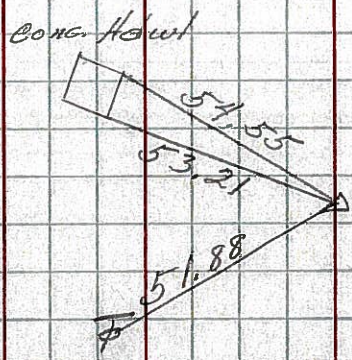
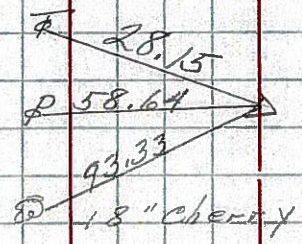
# ~~8147~~  
8147

59.34 S.E. Guy Pole  
50.05 S.W. Power Pole  
51.63 S.E.S. cor. F. Post  
45.98 N.W. Tel. pole

56

Sta. 65+25.8  
Δ = 0° 39' Lt.  
did not find

# ~~8146~~  
8146



55

Sta. 63+29.73  
did not find

# ~~8145~~  
8145



PERSONNEL	TITLE	PERSONNEL	TITLE	PERSONNEL	TITLE	PERSONNEL	TITLE
MARRISON	STATE			COUNTY	Seneca.	DATE	1/14/49
HOLCOMBE				S. H.		WEATHER	Cloudy
SLARDEN				SEC.		TEMP.	+30°
SOASH							

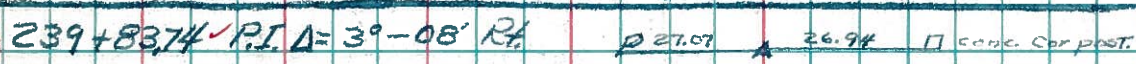
DESCRIPTION P.I.'S & ANGLES S.R. # 18

RECORDED Map. book # 3 pg. 10-13

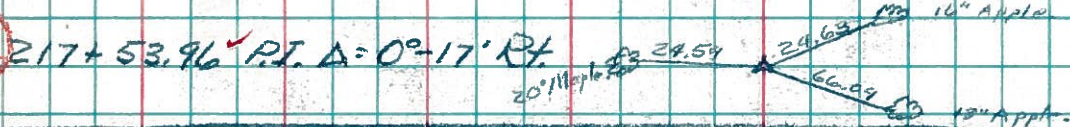
64



63



62



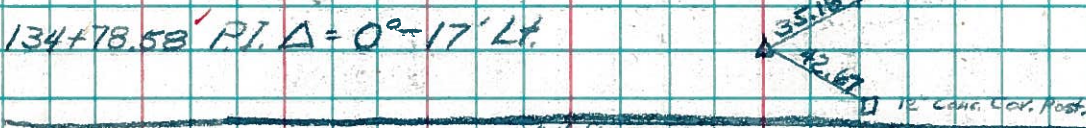
61



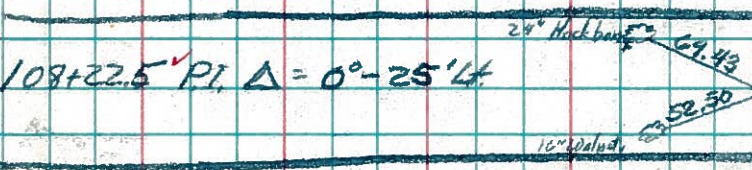
60



59



58



57

