

O.D.O.T. DISTRICT 2 SURVEY OFFICE (USE ONLY)

PERSONNEL

REFERENCE NO. 58

SHEET 18 OF 18

NOTES RHOADES

DATE 9/8/21

ROUTE SR 18

H.C. AUBLE

WEATHER SUNNY

COUNTY SENECA

R.C. NIESE

TEMP. 73°

TOWNSHIP CLINTON

DWG BY RHOADES

PID PVTRAIN

SECTION 22

T 2 N R 15 E

TYPE MONUMENT MAG/WASHER

ON SURFACE - ~~BELOW~~ ON

OFFSET Q PAVEMENT ON LT : RT

11.5' TO LT EDGE PAVEMENT

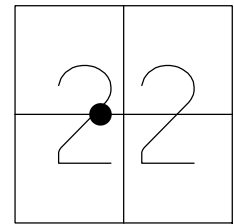
STATION: 922+54

HORIZ.DATUM: NAD83 2011

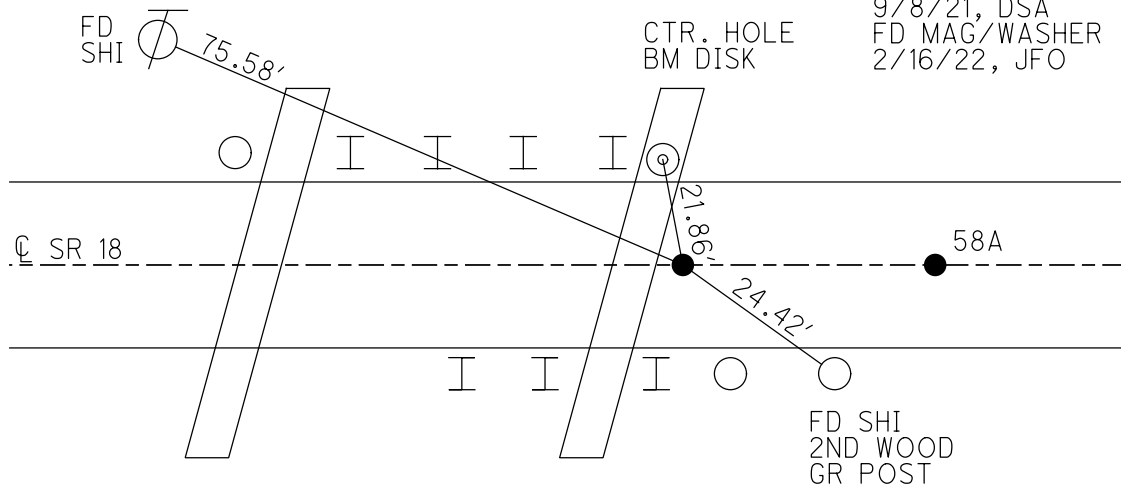
GEOID: NAVD88 2018

GRID: NORTHING: 531676.783

EASTING: 1797231.824



RECORD: P.I.  
 STA. 923+38.39  
 $\Delta = \text{OBS } 0^\circ 23' 20'' \text{ LT}$   
 $\Delta = \text{REC } 0^\circ 24' 31'' \text{ LT}$   
 SET PK/WASHER  
 10/7/91  
 FD P.K./WASHER  
 8/25/1993, RCC  
 SET MAG NAIL  
 3/6/19, JFO  
 SET MAG/WASHER  
 9/8/21, DSA  
 FD MAG/WASHER  
 2/16/22, JFO



RECORD:  
 FD MAG NAIL  
 REFA58  
 3/6/19  
 8/16/2019, JFO  
 N: 531676.982  
 E: 1797269.4278

O.D.O.T. DISTRICT 2 SURVEY OFFICE (USE ONLY)

PERSONNEL

REFERENCE NO. 58

SHEET 12 OF 12

NOTES CHENEY

DATE 7-2-1993

ROUTE SR 18

H.C. RIPPLE

WEATHER CLOUDY

COUNTY SENECA

R.C. BARBOUR

TEMP. 75°

TOWNSHIP CLINTON

GEYMAN

SECTION 22

DWG BY AUBLE

PID 107060

T 2 N R 15 E

TYPE MONUMENT P.K./WASHER

ON SURFACE - ~~BELOW~~ ON

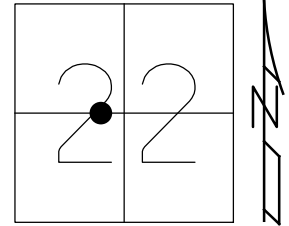
OFFSET 11.5' Q PAVEMENT ON LT : RT

11.5' TO LT EDGE PAVEMENT

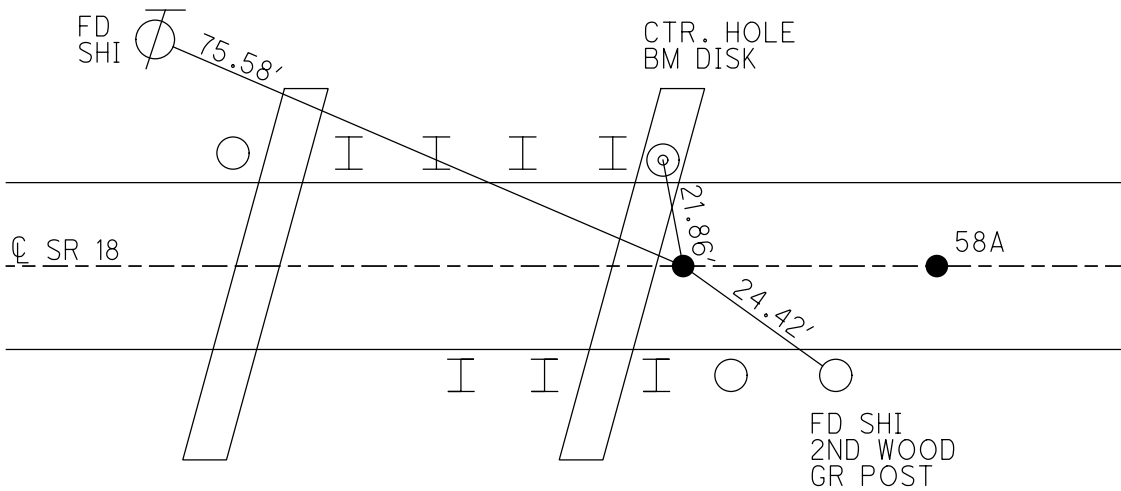
STATION: 922+54

HORZ.DATUM: - GEOID: -

GRID: NORTHING: - EASTING: -



RECORD: P.I.  
 STA. 923+38.39  
 $\Delta = \text{OBS } 0^\circ 23' 20'' \text{ LT}$   
 $\Delta = \text{REC } 0^\circ 24' 31'' \text{ LT}$   
 SET PK/WASHER  
 10/7/91  
 FD P.K./WASHER  
 8/25/1993, RCC  
 SET MAG NAIL  
 3/6/19, JFO



RECORD:  
 FD MAG NAIL  
 REFA58  
 3/6/19  
 8/16/2019, JFO  
 N: 531676.982  
 E: 1797269.4278

# O.D.O.T. DISTRICT 2 SURVEY OFFICE

PERSONNEL

REFERENCE NO. 58

SHEET 10 OF 24

NOTES CHENEY

H.C. RIPPLE

DATE 7-2-1993

ROUTE #18

R.C. BARBOUR

WEATHER CLOUDY

COUNTY SENECA

GEYMAN

TEMP. 75°

TOWNSHIP CLINTON

SECTION 15 & 22

T2N R 15E

TYPE MONUMENT PK/WASHER

ON SURFACE - ~~BELOW~~ ON

~~LEFT - C. PAV'T.~~ - ~~RIGHT~~ ON

11.5 TO LT. EDGE PAVEMENT

S.L.M. 922+54

1	5
2	2



RECORD: 10-7-1991

PI. STA. 923+38.39

$\Delta$  OBS. = 00°23'20" LT.

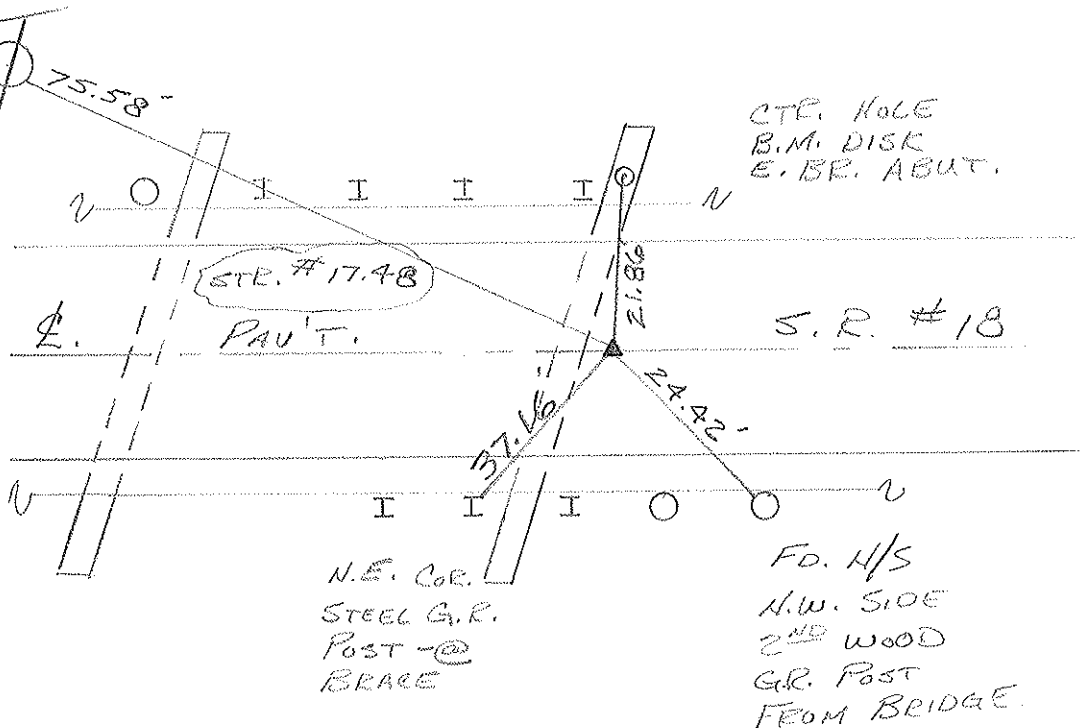
$\Delta$  REC. = 00°24'31" LT.

RE-SET PK/WASHER

CHECKED 8-25-1993

RCO

SET H/S.  
S.E. SIDE



# O.D.O.T. DISTRICT 2 SURVEY OFFICE

PERSONNEL \_\_\_\_\_

REFERENCE NO. \_\_\_\_\_

SHEET 1 OF 1

NOTES CHENEY

H.C. RIPPLE

R.C. BARBOUR

GEYMAN

DATE 10-7-1991

WEATHER PARTLY CLOUDY

TEMP. 55°

ROUTE 18

COUNTY SENECA

TOWNSHIP CLINTON

SECTION \_\_\_\_\_

T2 N R 15 E

TYPE MONUMENT RE-SET PK./WASHER

ON SURFACE - ~~BELOW~~ YES

LEFT - C. PAV'T. - RIGHT YES

14.0 TO 17.0 NE'S EDGE PAVEMENT

S.L.M. 17.49

1	5
2	2

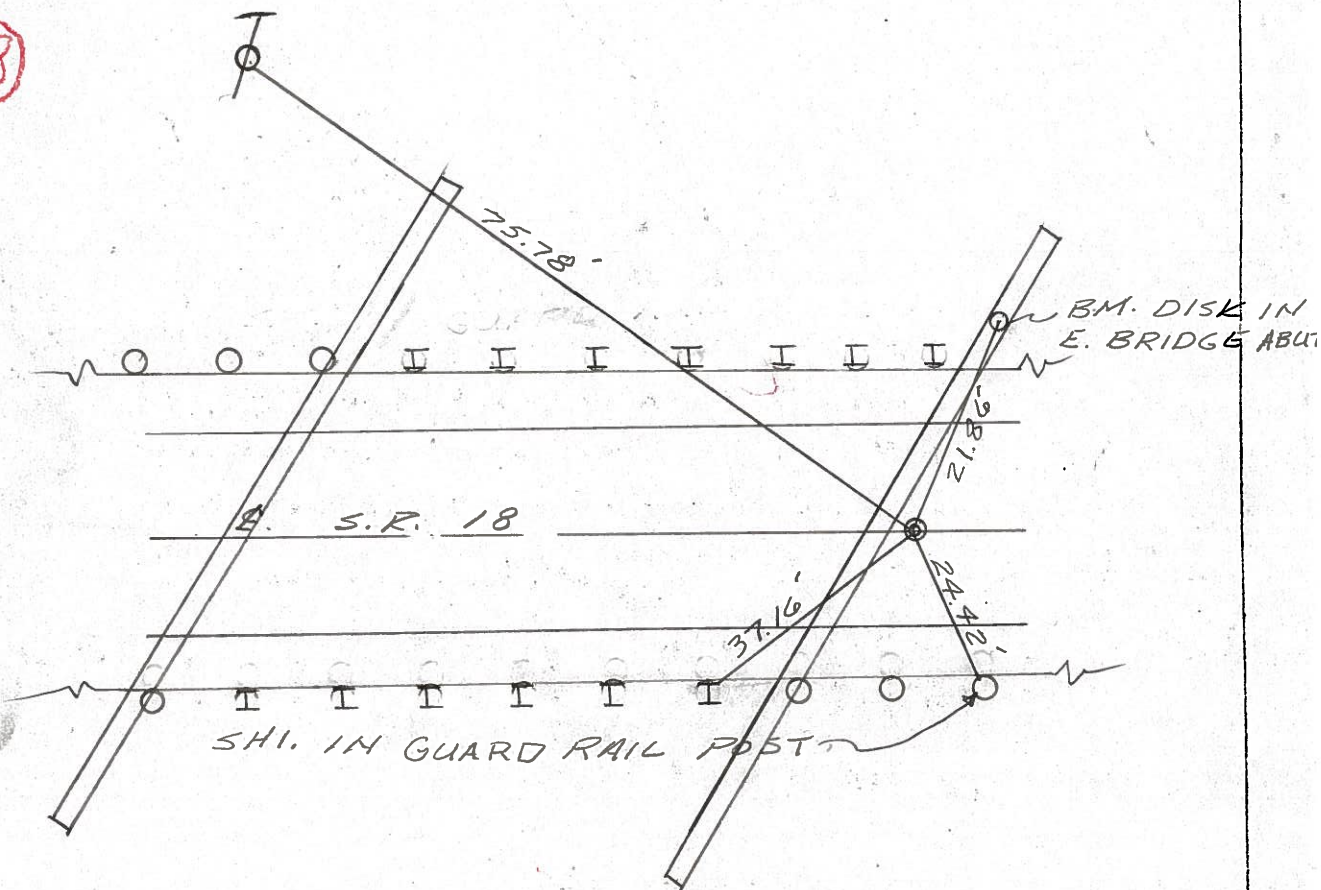


P.I. STA 923+38.39

$\Delta$  OBS. = 0°-23'-20" LT.

REC. = 0°-24'-31" LT.

58





PERSONNEL TITLE PERSONNEL TITLE

COUNTY Seneca

drawn 1/27/76  
DATE checked 6/10/76

Ash

Cronin

Ripple

Anderson

S. R. #18 (S.H. #449)

WEATHER

SEC. K

TEMP.

DESCRIPTION Ties for Control Points - Tiffin to Republic

JOB NO.

LEFT

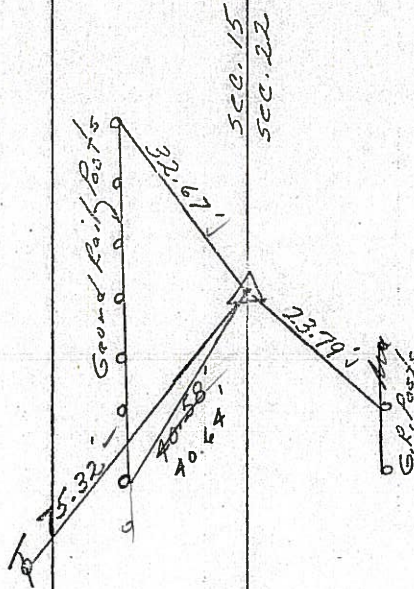
CENTER LINE

RIGHT

56

Clinton Twp.

P.I.  
 $\Delta = 0^{\circ} 25' Lt.$   
108+22.5  
Fd. P.K. nail  $1\frac{1}{2}''$   
below surface

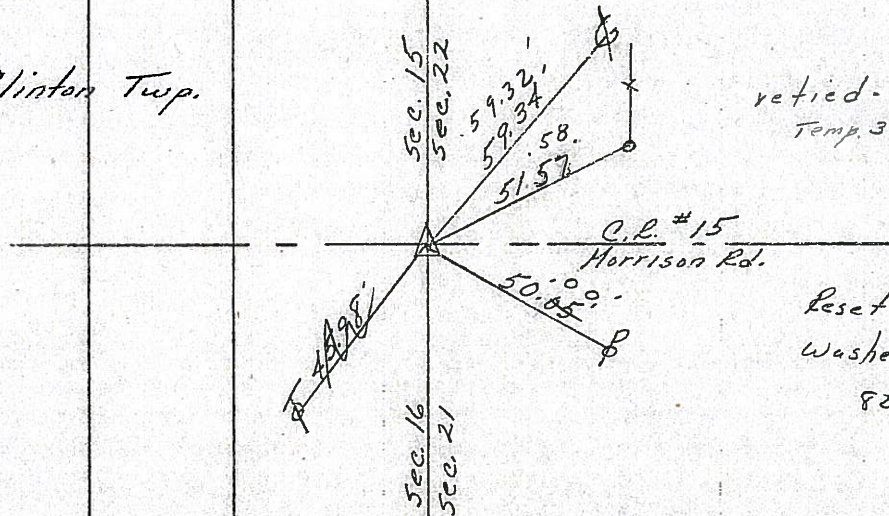


retied 3/18/76  
Temp. 32°  
Reset P.K. Nail & washer  
9/7/76

57

Clinton Twp.

P.I.  
 $\Delta = 0^{\circ} 40' Lt.$   
82+55  
Fd. R.R. spib. on  
Top



retied - 3/18/76  
Temp. 32°

Reset P.K. Nail &  
Washer 9/7/76  
82°



PERSONNEL TITLE PERSONNEL TITLE

Ash  
Cronin  
Bipple  
Anderson

COUNTY Seneca

drawn 1/27/73  
DATE checked 6/10/71

S. R. #18 (S.H. #449)

WEATHER

SEC. K

TEMP.

DESCRIPTION Ties for Control Points - Tiffin to Republic

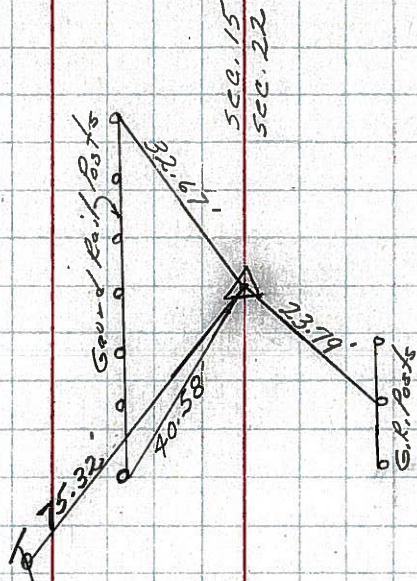
JOB NO.

LEFT CENTER LINE RIGHT

58

Clinton Twp.

P.I.  
 $\Delta = 0^{\circ} 25' Lt.$   
108+22.5  
Fd. P.K. nail  $1\frac{1}{2}''$   
below surface

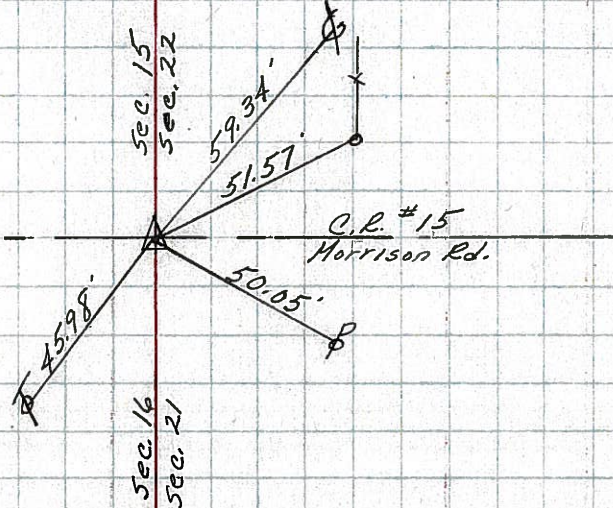


57

4

Clinton Twp.

P.I.  
 $\Delta = 0^{\circ} 40' Lt.$   
82+55  
Fd. R.R. spike on  
Top





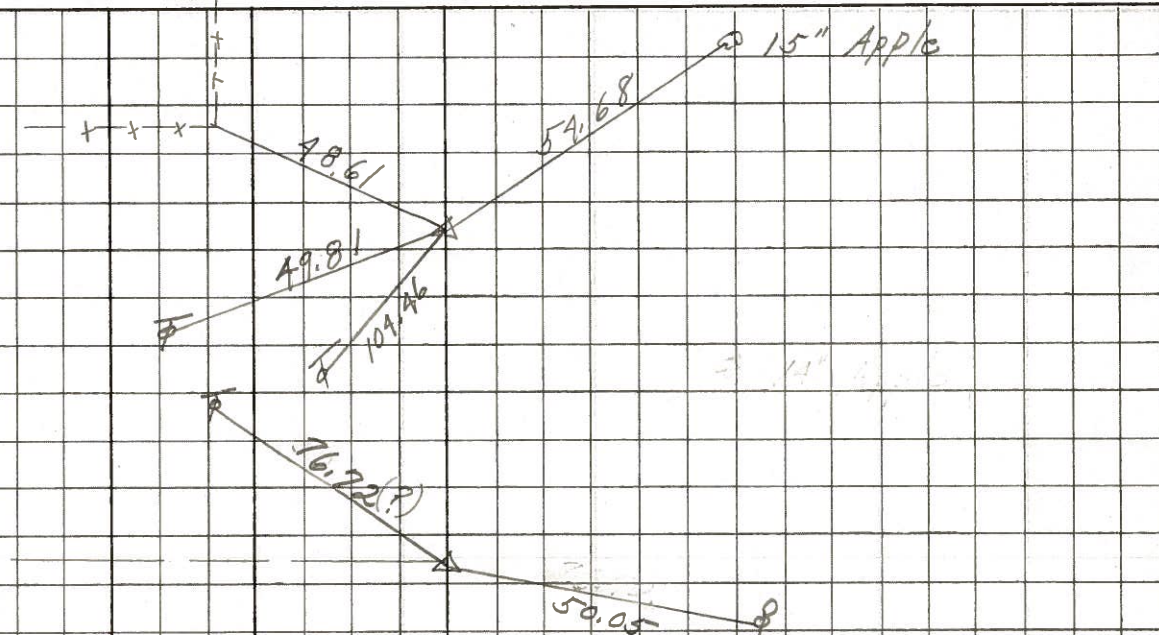
PERSONNEL TITLE PERSONNEL TITLE COUNTY Seneca DATE 10-30-68  
 Schneider TITLE TITLE  
 Barbour TITLE TITLE  
 Redding TITLE TITLE  
 Potts TITLE TITLE  
 S. R. 18 WEATHER Fair  
 SEC. Tiffin to Republic TEMP. 45°

DESCRIPTION Ties for Control Points JOB NO.

62

217+53.96  
 $\Delta = 0^\circ 17' Rt.$

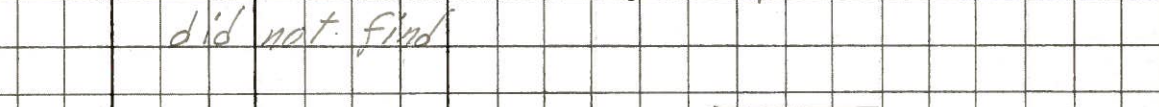
8152



61

186+57.2  
 $\Delta = 1^\circ 22' Rt.$

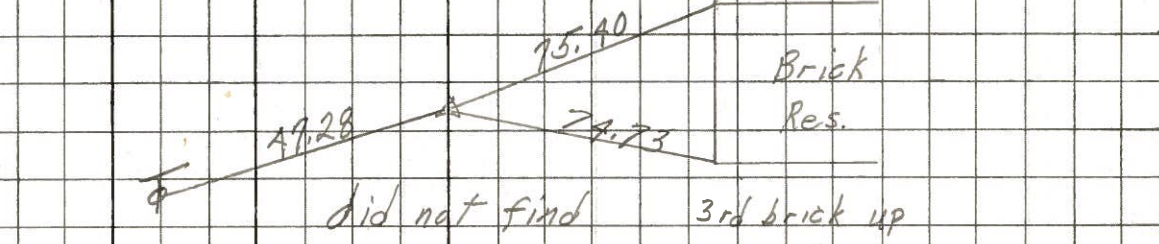
8151



60

164+19.53  
 $\Delta = 0^\circ 29' Rt.$

8150



59

134+78.58  
 $\Delta = 0^\circ 17' Lt.$

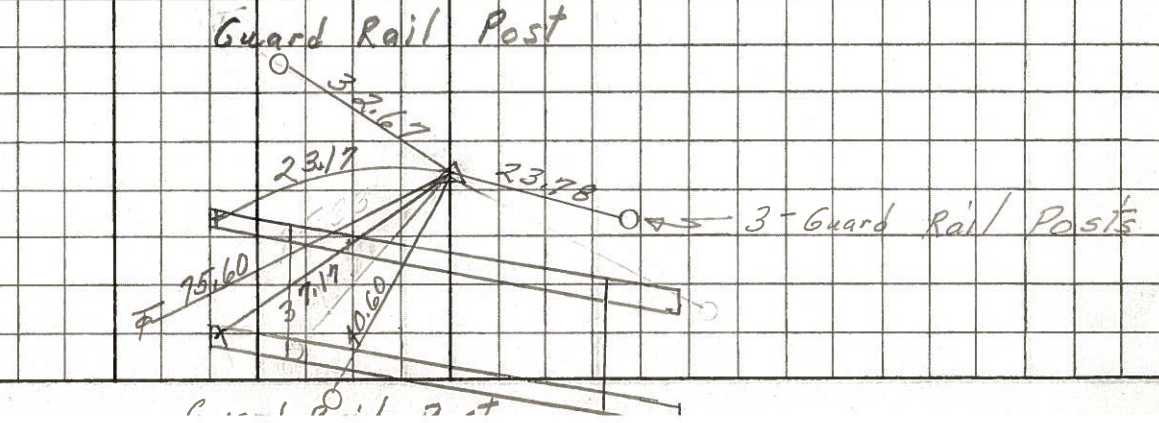
8149



58

108+22.5  
 $\Delta = 0^\circ 25' Lt.$   
 P.K. Nail

8148





PERSONNEL TITLE PERSONNEL TITLE

COUNTY Seneca

DATE 12-22-63

S. R. #18

WEATHER

SEC. X

TEMP.

DESCRIPTION

Tiffin - Republic

JOB NO.

LEFT

CENTER LINE

RIGHT

58

Sta. 108+22.6  
Δ = 0° 25' Lt.  
Found P.K. Nail  
1 1/2" below surface

75.45 N. 14" Elm  
69.24 B.M. Nail  
75.32 N.W. Tel. pole  
32.67 N.E. Guard Rail Post  
40.58 N.W. " " "  
23.79 S.W. " " "

# ~~8146~~

8148

57

Sta. 82+55  
Δ = 0° 40' Rt.  
Co. Rd. North & South  
Found R.R. spk

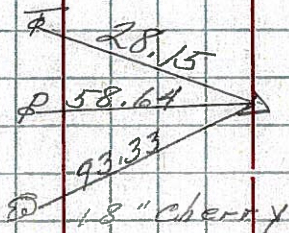
59.34 S.E. Guy Pole  
50.05 S.W. Power Pole  
51.63 S.E.S. cor. F Post  
45.98 N.W. Tel. Pole

# ~~8147~~

8147

56

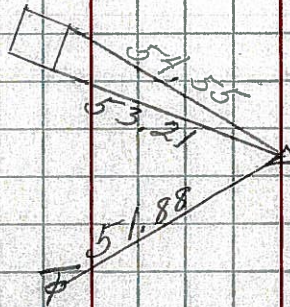
Sta. 65+25.8  
Δ = 0° 39' Lt.  
did not find



# ~~8146~~

8146

conc. Hdwl



55

Sta. 63+29.73  
did not find

# ~~8145~~

8145



PERSONNEL TITLE PERSONNEL TITLE PERSONNEL TITLE

Marrison

COUNTY Seneca

DATE 1/14/49

Holcombe

S. H.

WEATHER Cloudy

Swarden

SEC.

TEMP. 43°

Swash

DESCRIPTION

P.I.'s & ANGLES S.R. # 18

LEFT

CENTER LINE

RIGHT

RECORDED Mon. book # 3 pg. 10-13

64

254+37.35 ✓ P.I. Δ = 5°-00' Lt.



63

239+83.74 ✓ P.I. Δ = 3°-08' Rt.



62

217+53.96 ✓ P.I. Δ = 0°-17' Rt.



61

186+57.2 ✓ P.I. Δ = 1°-22' Rt.



60

164+19.53 ✓ P.I. Δ = 0°-29' Rt.



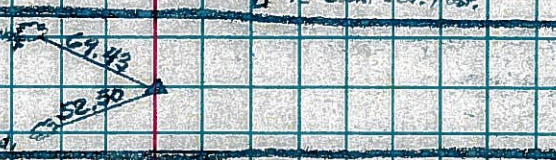
59

134+78.58 ✓ P.I. Δ = 0°-17' Lt.



58

109+22.5 ✓ P.I. Δ = 0°-25' Lt.



57

82+55 ✓ P.I. Δ = 0°-40' Rt.

