

O.D.O.T. DISTRICT 2 SURVEY OFFICE (USE ONLY)

PERSONNEL

REFERENCE NO. 59

SHEET 1 OF 14

NOTES RHOADES

DATE 7/8/2015

ROUTE SR 18

H.C. O'DONNELL

WEATHER SUNNY

COUNTY SENECA

R.C. HOMAN

TEMP. 61° F

TOWNSHIP CLINTON

SECTION 14

DWG BY AUBLE PID 107060

T 2 N R 15 E

TYPE MONUMENT R.R. SPIKE

~~ON SURFACE~~ - BELOW 3"

OFFSET \odot PAVEMENT ON LT : RT

12' TO LT EDGE PAVEMENT

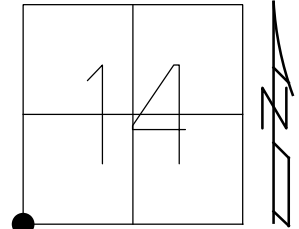
STATION: 949+39.40

HORZ.DATUM: NAD83 (2011)

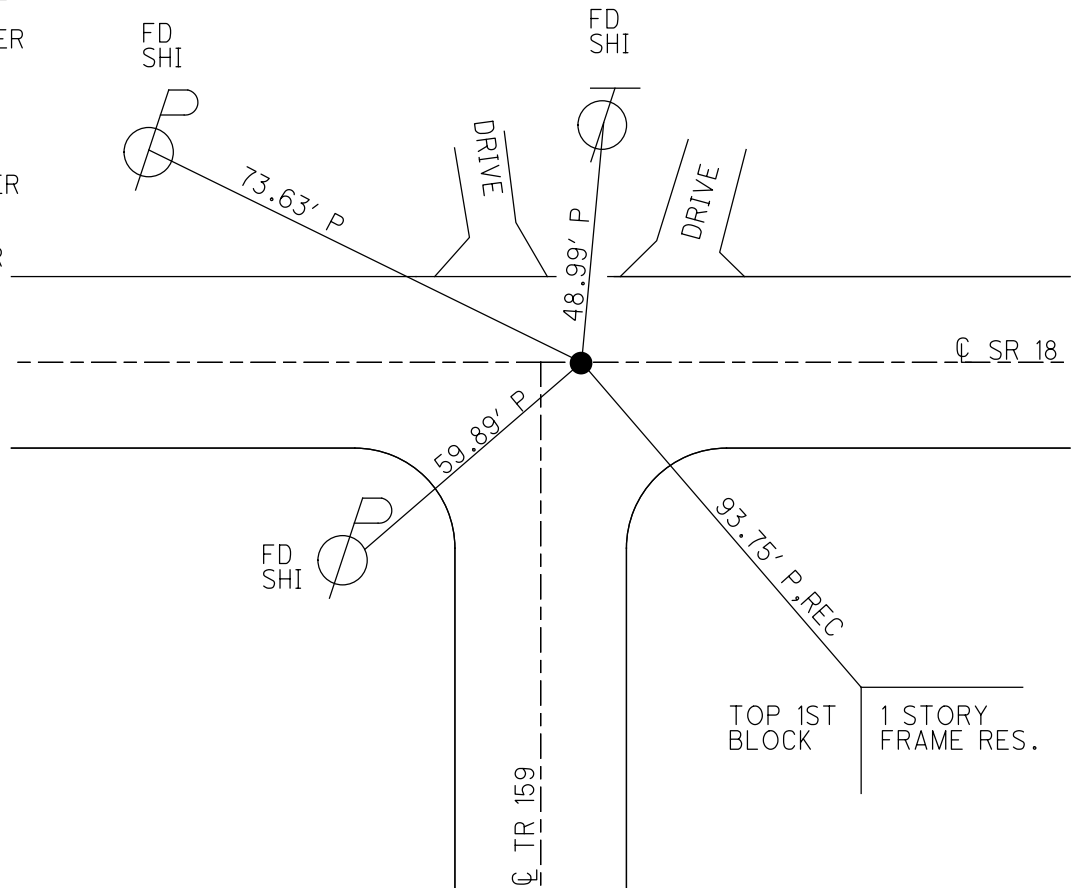
GEOID: 2012A

GRID: NORTHING: 531692.095

EASTING: 1799887.819



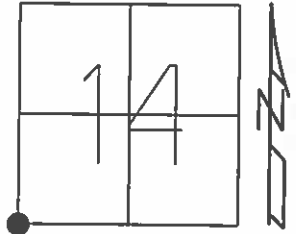
RECORD: P.I.
 SET R.R.SPIKE
 POST WAR PLAN(1950)
 6/71
 STA. 164+19.53
 $\Delta=0^{\circ}17'$ LT
 STA 134+78.58
 3-18-1976
 SET P.K./WASHER
 9-7-76
 SET P.K./WASHER
 8-25-1993, RCC
 FD R.R. SPIKE
 3" BELOW
 REF59
 5-1-14, EBW
 SET MAG/WASHER
 NEWREF59
 7-11-16, DCH
 FD MAG/WASHER
 REF59
 3-6-19
 8/16/19, JFO



O.D.O.T. DISTRICT 2 SURVEY OFFICE (USE ONLY)

PERSONNEL _____ REFERENCE NO. 59 SHEET 1 OF 17
 NOTES RHOADES DATE 7-8-15 ROUTE SR 18
 H.C. O'DONNELL WEATHER SUNNY COUNTY SENECA
 R.C. HOMAN TEMP. 61°F TOWNSHIP CLINTON
 _____ SECTION 14
 _____ T 2 N R 15 E

TYPE MONUMENT RR. SPIKE
~~ON SURFACE~~ - BELOW 3"
 LEFT - ☉ PAV'T - RIGHT ON
12' TO LT EDGE PAVEMENT
 S.L.M. 949+39.40
 Grid: Northing: 531692.1014 Easting: 1799887.8329



RECORD:
 SET RR.SP.K 6-1971 BY
 TIE ON POST WAR PLAN(1950)
 BY MEASRING
 STA. 164+19.53

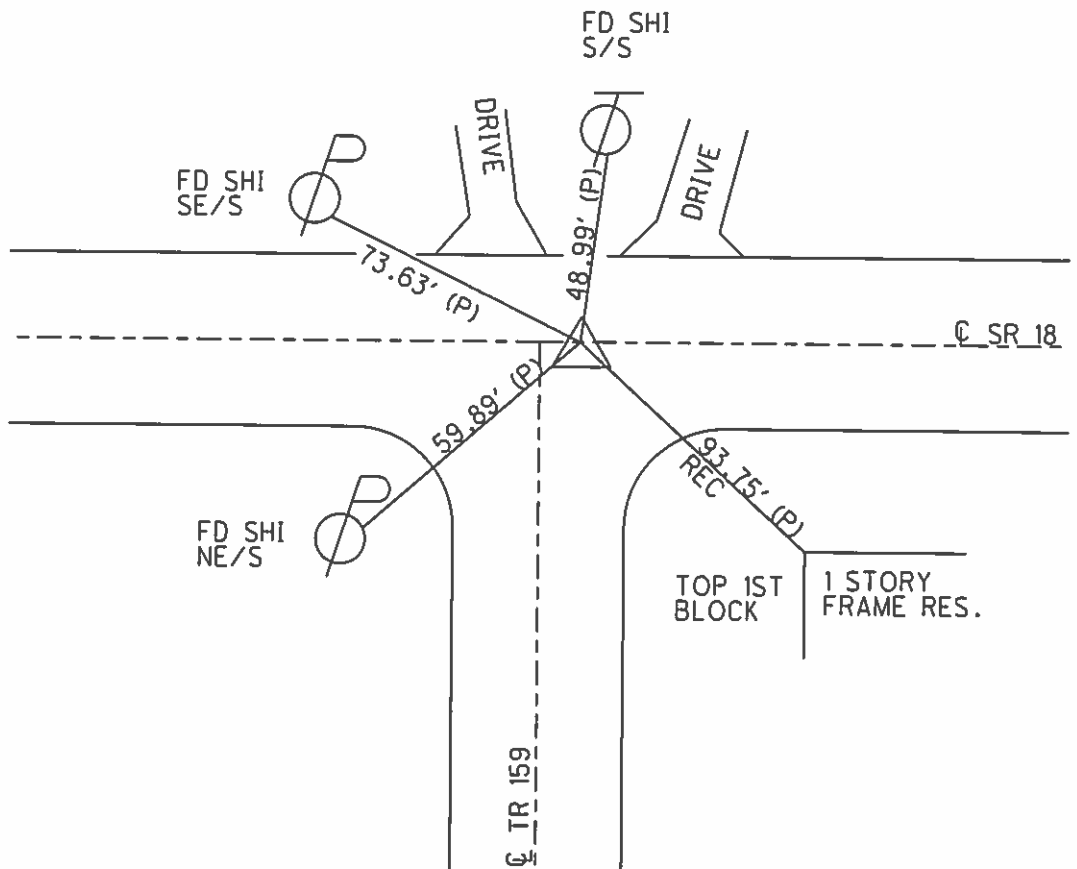
P.I. $\Delta=0^{\circ}17'$ LT
 STA 134+78.58
 3-18-1976

SET PK/WASHER
 9-7-76

SET PK/WASHER
 8-25-1993, RCC

FD RR. SPIKE
 3" BELOW
 GPS, REF59
 5-1-14, JLL, EBW

SET MAG/WASHER
 GPS, NEWREF59
 7-11-16, DCH



O.D.O.T. DISTRICT 2 SURVEY OFFICE

PERSONNEL

REFERENCE NO. 59

SHEET 11 OF 24

NOTES CHENEY

H.C. RIPPLE

DATE 7-2-1993

ROUTE #18

R.C. BARBOUR

WEATHER Cloudy

COUNTY SENECA

GEYMAN

TEMP. 75°

TOWNSHIP CLINTON

SECTION 14, 15, 22 & 23

TEN R 15 E

TYPE MONUMENT R.R. SPK.

~~ON~~ SURFACE - BELOW 2"

~~LEFT~~ - PAV'T. - ~~RIGHT~~ ON (6' E. & T.R. #159)

11' TO LT EDGE PAVEMENT

S.L.M. 949+11

| | |
|----|----|
| 15 | 14 |
| 22 | 23 |



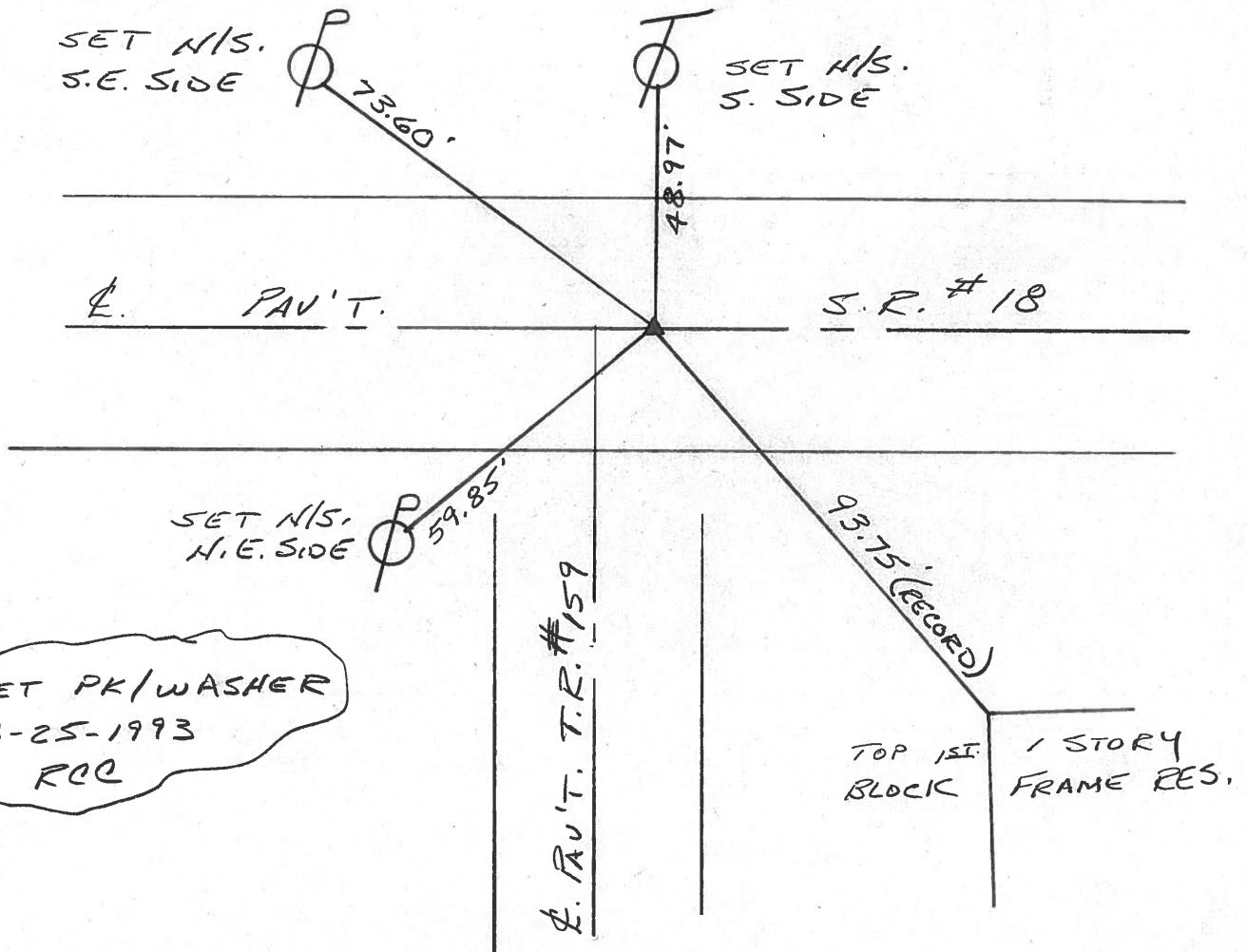
RECORD: 3-18-1976

P.I. STA. 134+78.58

$\Delta = 0^\circ 17' \text{ LT.}$

SET PK/WASHER 9-7-76

R.R. SPK. WAS SET IN 6-1971 BY TIES WRITTEN IN RED ON POST-WAR PLAN (1950) & BY MEASURING BACK FROM STA. 164+19.53.

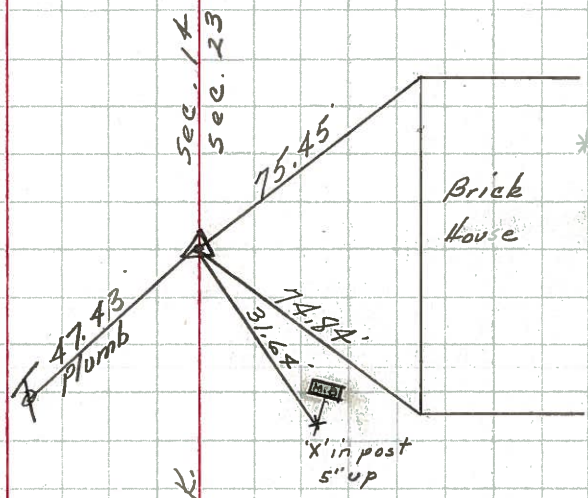


PERSONNEL TITLE PERSONNEL TITLE COUNTY Seneca DATE drawn 11/27/72
Ash _____ checked 6/11/71
Cronin _____
Ripple _____ S. R. #18 (S.H. #449) WEATHER _____
Anderson _____ SEC. K TEMP. _____
 DESCRIPTION Ties for Control Points - Tiffin to Republic JOB NO. _____

60

Clinton Twp

P.I.
 $\Delta = 0^{\circ} 29' \text{ Lt.}$
 164+1953
 Set small spike.
 Used ties from 1953
 plans to re-establish



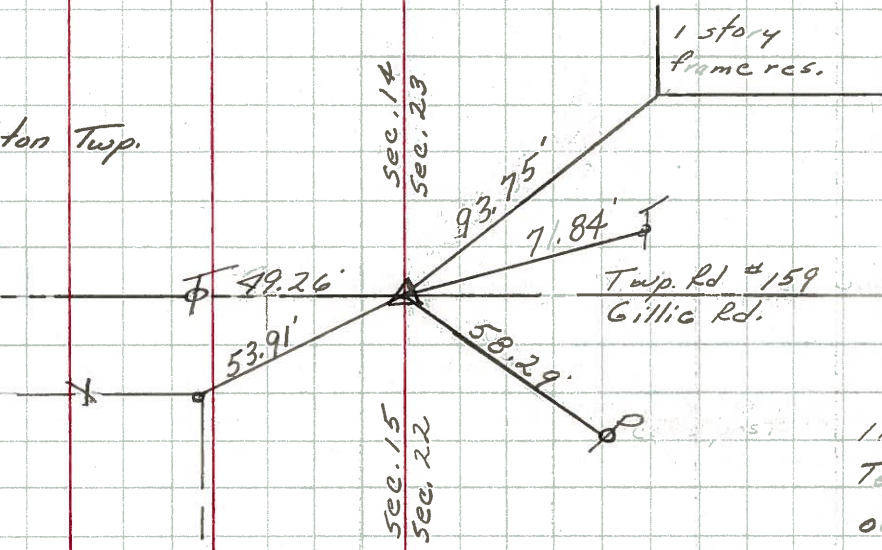
* Ties to corner of house were plumbed up 2 1/2' in order to have a straight line measurement as hill is too steep to plumb.

59

6

Clinton Twp.

P.I.
 $\Delta = 0^{\circ} 17' \text{ Lt.}$
 134+78.58
 Set R.R. spike
 by ties written in
 red on Post War
 Plans (1950) &
 by meas. back
 from Sta. 164+19.53
 Checks good



11/10/72
 Temp 40°
 overcast

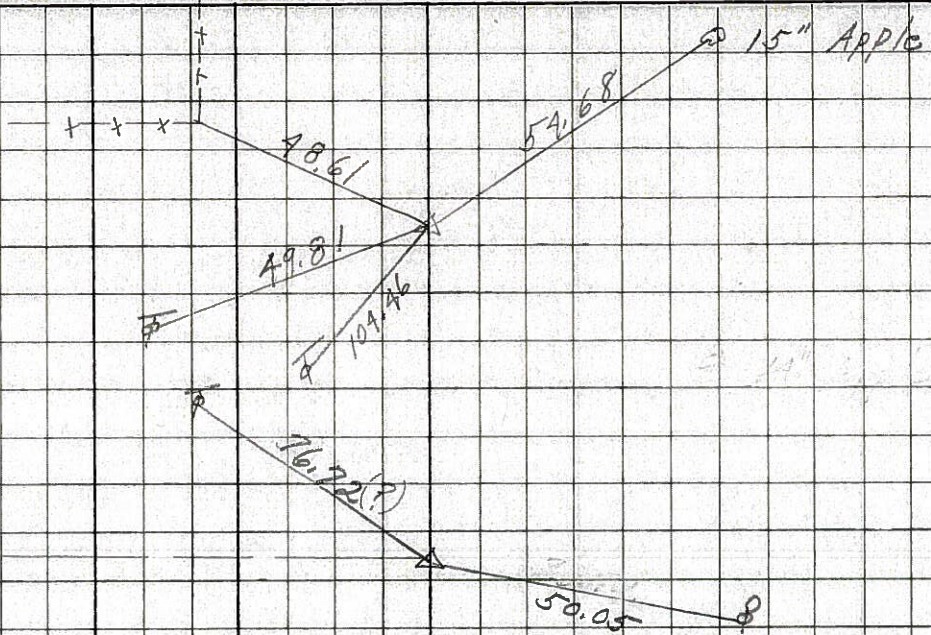
| | | | | | | | |
|-----------|-------|-----------|-------|--------|--------------------|---------|----------|
| PERSONNEL | TITLE | PERSONNEL | TITLE | COUNTY | Seneca | DATE | 10-30-68 |
| Schneider | | | | S. R. | 18 | WEATHER | Fair |
| Barbour | | | | SEC. | Tiffin to Republic | TEMP. | 45° |
| Redding | | | | | | | |
| Potts | | | | | | | |

DESCRIPTION Ties for Control Points JOB NO. _____

(62)

217+53.96
 $\Delta = 0^\circ 17' \text{ Rt.}$

8152

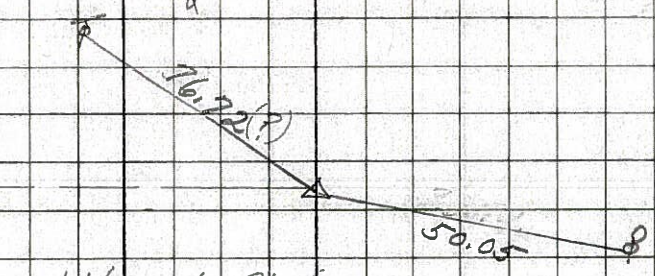


(61)

186+57.2
 $\Delta = 1^\circ 22' \text{ Rt.}$

8151

did not find



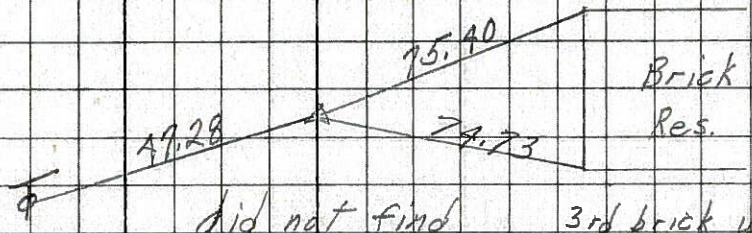
(60)

164+19.53
 $\Delta = 0^\circ 29' \text{ Rt.}$

8150

did not find

Brick Res.
 3rd brick up



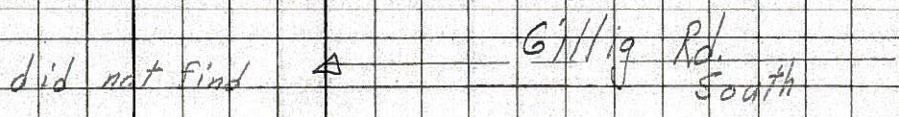
(59)

134+78.58
 $\Delta = 0^\circ 17' \text{ Lt.}$

8149

did not find

Gillig Rd. South



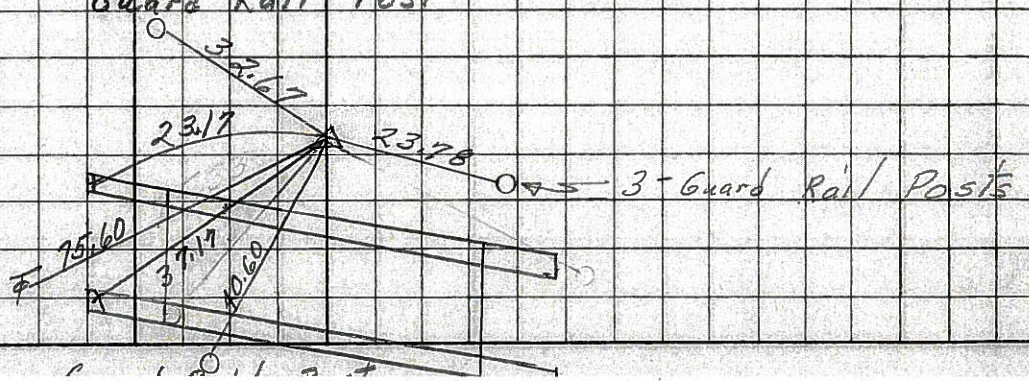
(58)

108+22.5
 $\Delta = 0^\circ 25' \text{ Lt.}$
 P.K. Nail

8148

Guard Rail Post

3-Guard Rail Posts



PERSONNEL TITLE PERSONNEL TITLE

COUNTY Seneca DATE 12-22-65

S. R. # 18 WEATHER

SEC. K TEMP.

DESCRIPTION Tiffin - Republic JOB NO.

LEFT

CENTER LINE

RIGHT

(62)

Sta. 217+53.96
 $\Delta = 0^{\circ} 17' \text{ Rt.}$
 Found R.R. spl.

48.65 S.W. 14" Apple
 54.72 S.E. 15" Apple
 49.81 N.W. Tel. Pole
 48.59 N. Anchor Post

~~657~~

8152

(61)

Sta. 186+57.2
 $\Delta = 10^{\circ} 22' \text{ Rt.}$
 did not find

34.43 N.E. - S.W. cor. Hdwy.
 25.44 S.E. - 24" Apple
 35.66 S.W. - 14" W. Cherry

~~657~~

8151

(60)

Sta. 164+19.53
 $\Delta = 0^{\circ} 29' \text{ Rt.}$
 did not find

53.44 SE 22" Pine
 38.63 S.W. 22" Pine

~~657~~

8150

(59)

Sta. 134+78.58
 $\Delta = 0^{\circ} 17' \text{ Lt.}$
 Gillig Rd.
 did not find

35.18 SE, Tel. Pole
 42.67 S.W. Conc. Post

~~657~~

8149

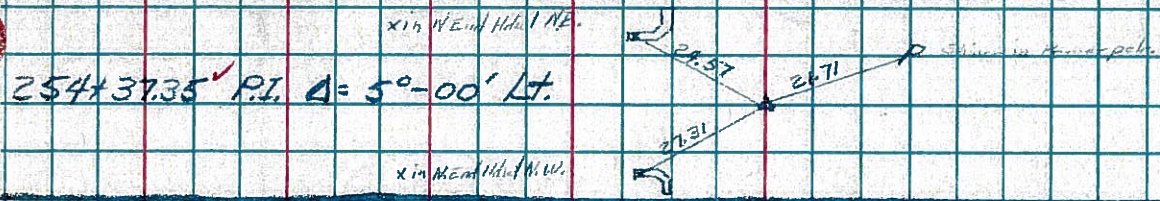
PERSONNEL TITLE PERSONNEL TITLE PERSONNEL TITLE PERSONNEL TITLE PERSONNEL TITLE
 MORRISON _____ COUNTY Seneca. DATE 1/14/49
 HOLCOMBE _____ S. H. _____ WEATHER Cloudy
 SURREN _____ SEC. _____ TEMP. +30°
 Scastr _____

DESCRIPTION P.I.'s & ANGLES S.R. # 18

LEFT CENTER LINE RIGHT

RECORDED Mon. Book # 3 pg. 10-13

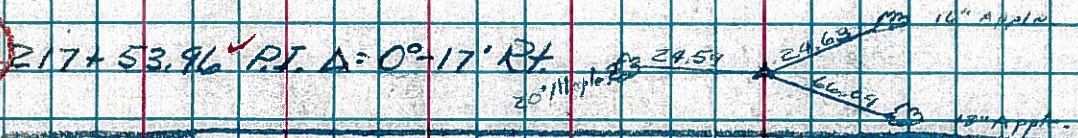
64



63



62



61



60



59



58



57

