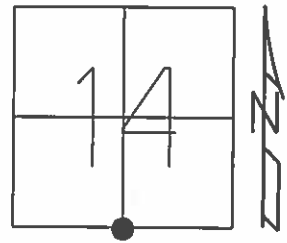


O.D.O.T. DISTRICT 2 SURVEY OFFICE (USE ONLY)

PERSONNEL _____ REFERENCE NO. 60 SHEET 2 OF 17
 NOTES RHOADES DATE 7-8-15 ROUTE SR 18
 H.C. O'DONNELL WEATHER SUNNY COUNTY SENECA
 R.C. HOMAN TEMP. 61°F TOWNSHIP CLINTON
 _____ SECTION 14
 _____ T 2 N R 15 E

TYPE MONUMENT SM. RR. SPIKE
~~ON SURFACE~~ - BELOW 3"
 LEFT - ☉ PAV'T - RIGHT ON
11.3' TO RT EDGE PAVEMENT
 S.L.M. 978+80.41



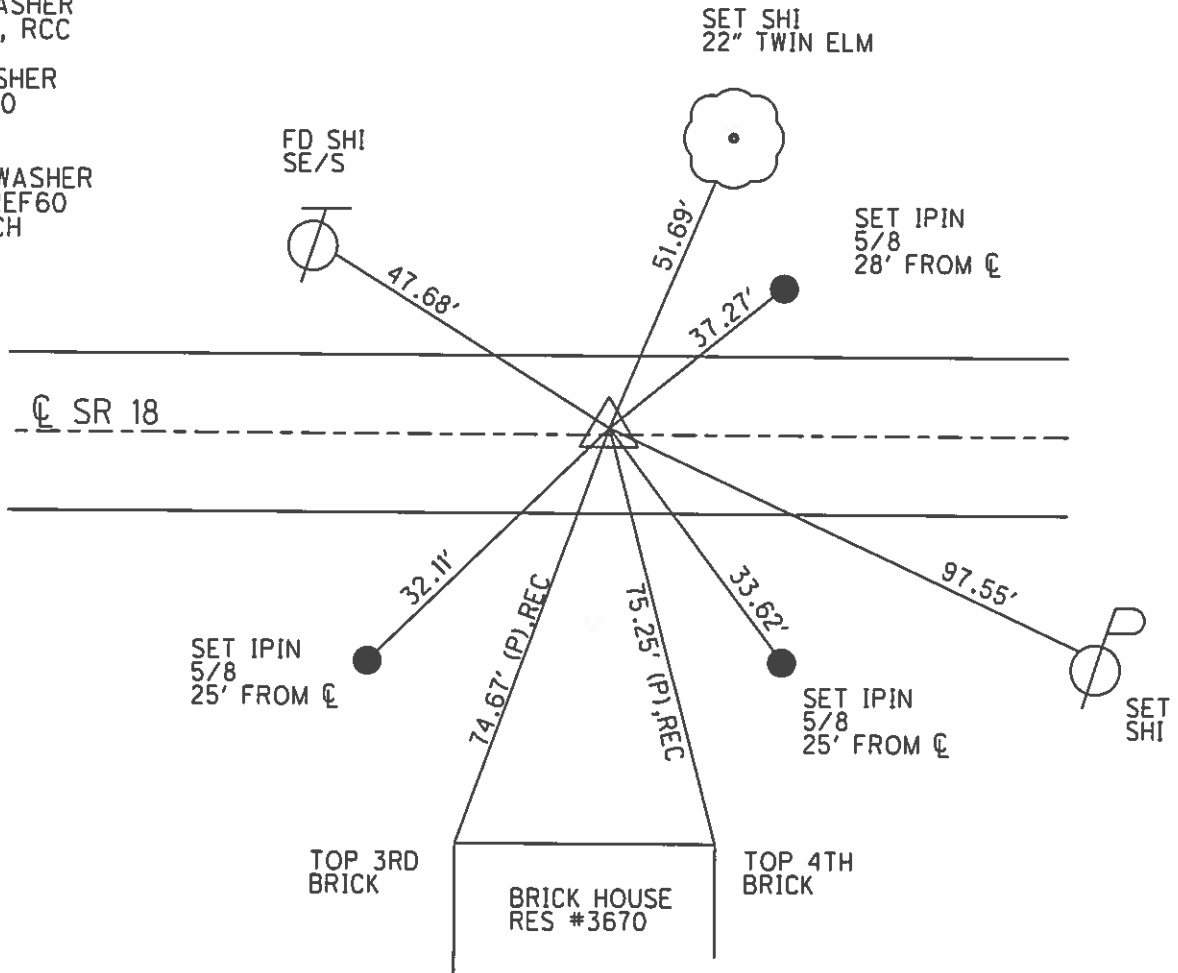
Grid: Northing: 531724.0671 Easting: 1802828.6871

RECORD:
 P.I. $\Delta 0^{\circ}29'$ RT
 STA 164+19.53
 SET SM. SPK
 USED TIES FROM 1953
 PLANS TO ESTABLISHED
 6-11-1971

SET PK/WASHER
 8-25-1993, RCC

FD PK/WASHER
 GPS, REF60
 05-01-14

SET MAG/WASHER
 GPS, NEWREF60
 7-11-16, DCH



SET IPIN
^{5/8}
 25' FROM ☉

SET IPIN
^{5/8}
 25' FROM ☉

TOP 3RD
 BRICK

BRICK HOUSE
 RES #3670

TOP 4TH
 BRICK

O.D.O.T. DISTRICT 2 SURVEY OFFICE

PERSONNEL

REFERENCE NO. 60

SHEET 12 OF 24

NOTES CHENEY

H.C. RIPPLE

R.C. BARBOUR

GEYMAN

DATE 7-2-1993

WEATHER CLOUDY

TEMP. 75°

ROUTE #18

COUNTY SENECA

TOWNSHIP CLINTON

SECTION 14 & 23

T2 N R 15 E

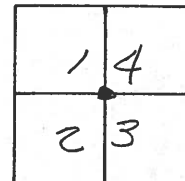
TYPE MONUMENT PK/WASHER

ON SURFACE - ~~BELOW~~ ON

~~LEFT~~ - Q PAV'T. - ~~RIGHT~~ ON

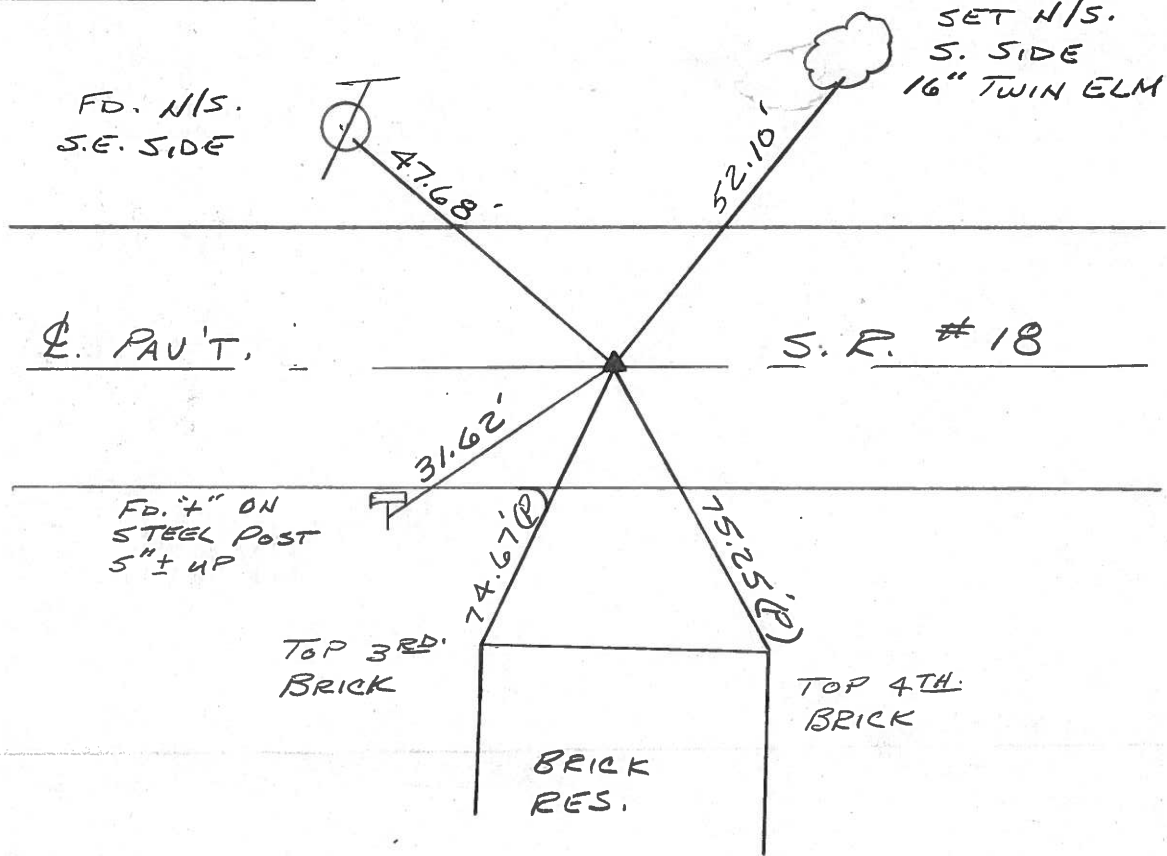
11.5 FT. EDGE PAVEMENT

S.L.M. 978+52



RECORD: 6-11-1971
 P.I. STA. 164+19.53
 $\Delta = 0^{\circ} 29' \text{ Rt.}$
 SET SMALL SPR.
 USED TIES FROM
 1953 PLANS TO
 RE-ESTABLISH.

SET PK/WASHER
 8-25-1993
 RCC



FD. N/S.
S.E. SIDE

SET N/S.
S. SIDE
16" TWIN ELM

Q. PAV'T.

S. R. # 18

FD. 4" DN
STEEL POST
5" ± UP

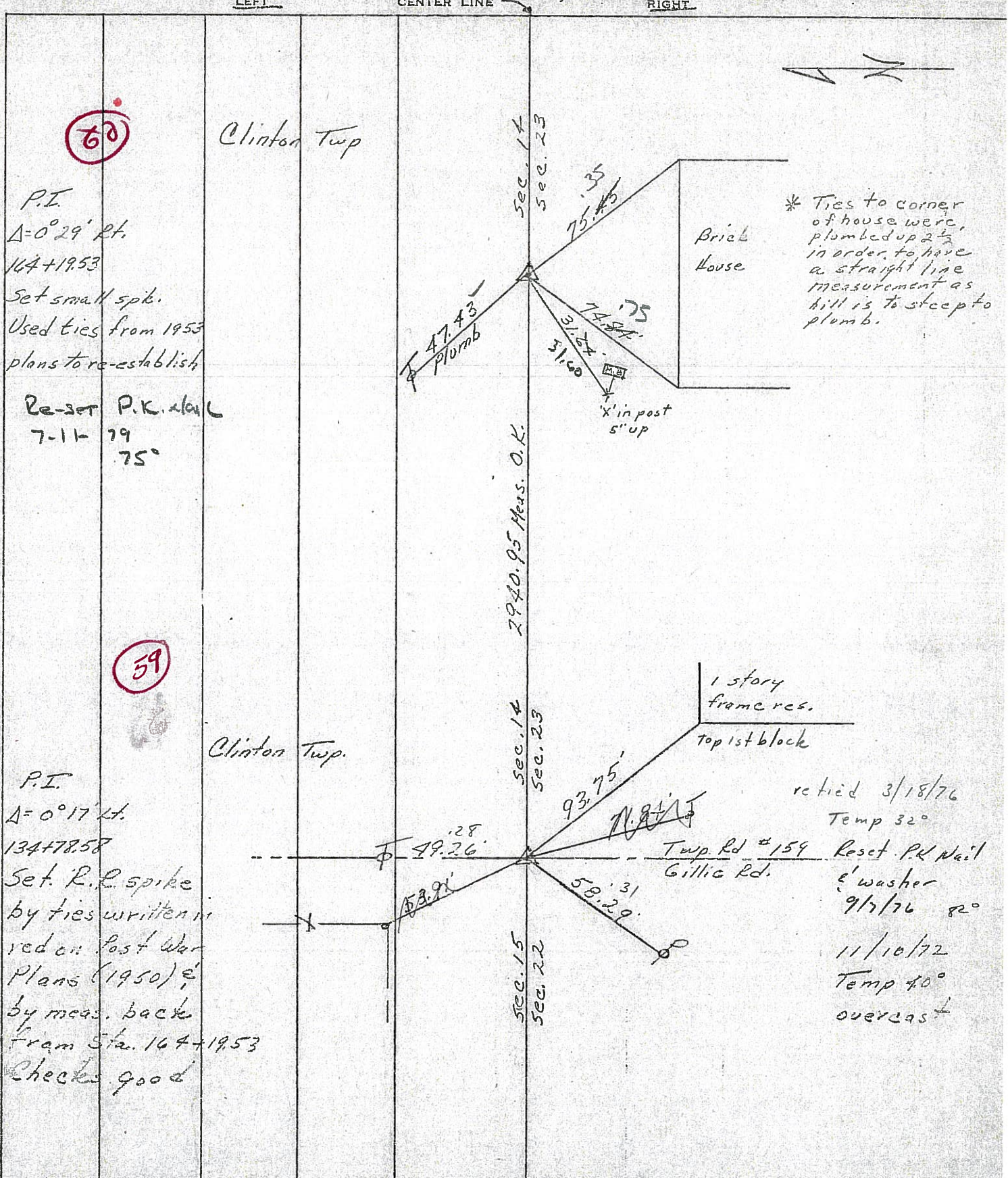
TOP 3RD.
BRICK

TOP 4TH.
BRICK

BRICK
RES.

PERSONNEL	TITLE	PERSONNEL	TITLE
Ash			
Cronin			
Ripple			
Anderson			

COUNTY Seneca DATE checked 6/11/77
 S. R. #18 (S.H. #449) WEATHER _____
 SEC. K TEMP. _____
 DESCRIPTION Ties for Control Points - Tiffin to Republic JOB NO. _____



PERSONNEL TITLE PERSONNEL TITLE

Ash _____ COUNTY Seneca

Cronin _____ S. R. #18 (S.H. #449)

Ripple _____ WEATHER

Anderson _____ SEC. K

DESCRIPTION Ties for Control Points - Tiffin to Republic

LEFT CENTER LINE RIGHT

JOB NO.

drawn 11/27/72
DATE checked 6/11/71

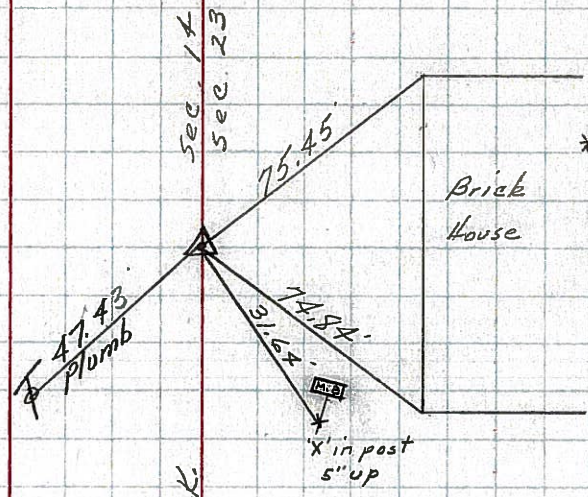
WEATHER

TEMP.

60

Clinton Twp

P.I.
 $\Delta = 0^\circ 29' \text{ Lt.}$
164+19.53
Set small spike.
Used ties from 1953
plans to re-establish

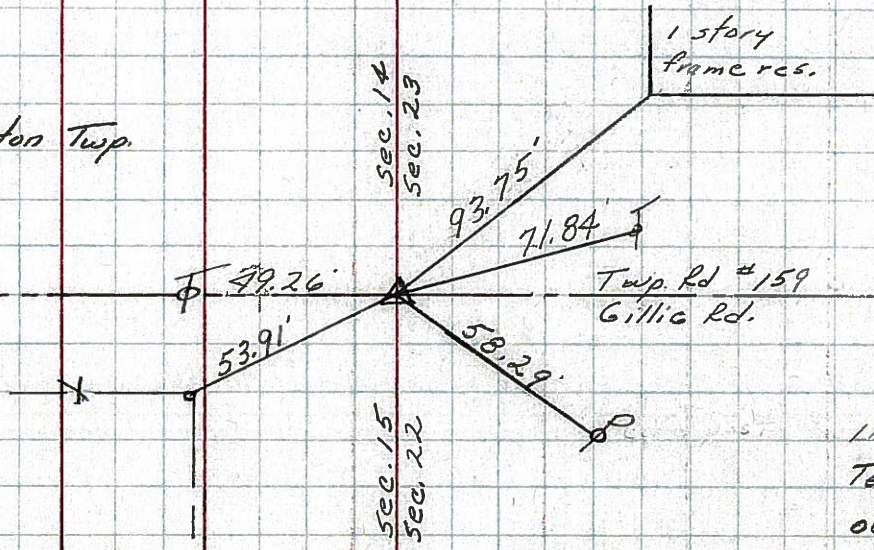


59

6

Clinton Twp

P.I.
 $\Delta = 0^\circ 17' \text{ Lt.}$
134+78.58
Set R.R. spike
by ties written in
red on Post War
Plans (1950),
by meas. back
from Sta. 164+19.53
Checks good



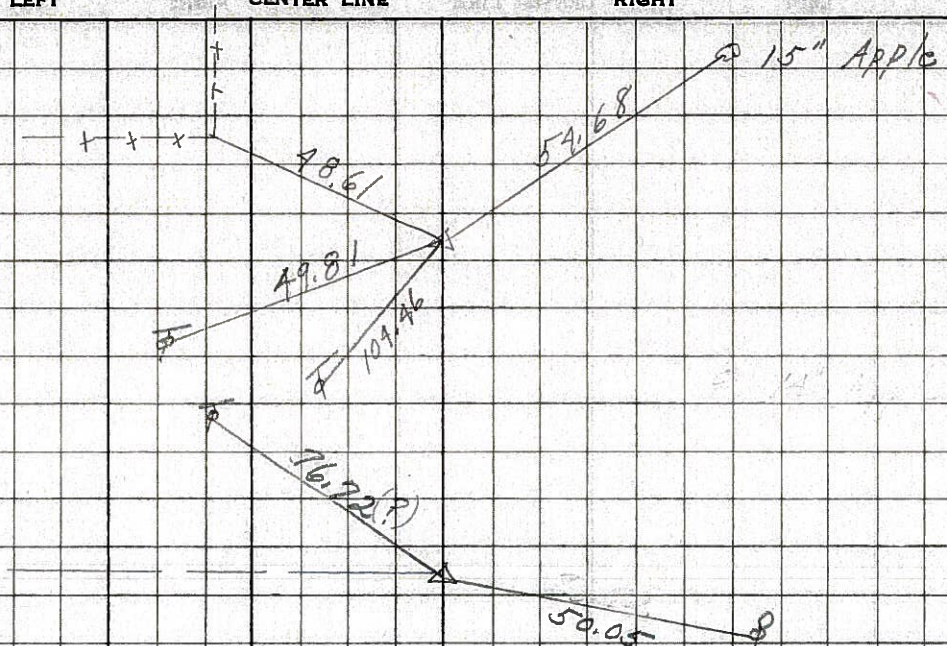
PERSONNEL	TITLE	PERSONNEL	TITLE	COUNTY	DATE	S. R.	WEATHER	TEMP.
Schneider				Seneca	10-30-68	18	Fair	45°
Barbour								
Redding								
Potts								

DESCRIPTION: Ties for Control Points

(62)

217 + 53.96
Δ = 0° 17' Rt.

8152



(61)

186 + 57.2
Δ = 1° 22' Rt.

8151

did not find



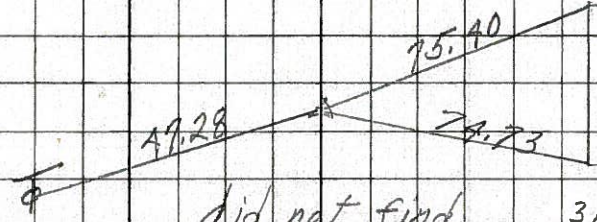
(60)

164 + 19.53
Δ = 0° 29' Rt.

8150

did not find

Brick Res.
3rd brick up



(59)

134 + 78.58
Δ = 0° 17' Lt.

8149

did not find

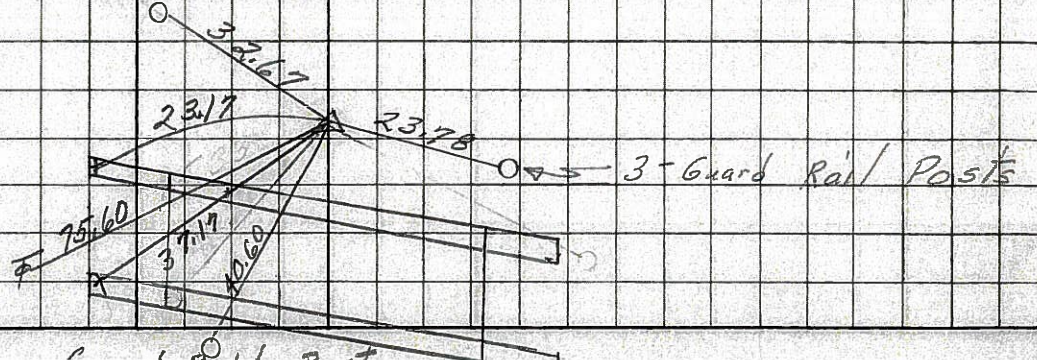
Gilling Rd. South

Guard Rail Post

(58)

108 + 22.5
Δ = 0° 25' Lt.
P.K. Nail

8148



PERSONNEL TITLE PERSONNEL TITLE

COUNTY Seneca DATE 12-22-63

S. R. # 18 WEATHER

SEC. K TEMP.

DESCRIPTION Tiffin - Republic JOB NO.

LEFT CENTER LINE RIGHT

(62)

Sta. 217+53.96
 $\Delta = 0^{\circ} 17' R\ddagger$
 Found R.R. sph.

48.65 S.W. 14" Apple
 54.72 S.E. 15" Apple
 49.81 N.W. Tel. Pole
 48.59 N. Anchor Post

~~652~~

8152

(61)

Sta 186+57.2
 $\Delta = 10^{\circ} 22' R\ddagger$
 did not find

34.43 N.E - S.W. cor. Hdwy.
 25.44 S.E. - 24" Apple
 35.66 S.W. - 14" W. Chert

~~657~~

8151

(60)

Sta. 164+19.53
 $\Delta = 0^{\circ} 29' R\ddagger$
 did not find

53.44 S.E. 22" Pine
 38.63 S.W. 22" Pine

~~650~~

8150

(59)

Sta. 134+78.58
 $\Delta = 0^{\circ} 17' L\ddagger$
 Gillig Rd.
 did not find

35.18 S.E. Tel. Pole
 42.67 S.W. Conc. Post

~~649~~

8149

PERSONNEL TITLE PERSONNEL TITLE PERSONNEL TITLE PERSONNEL TITLE PERSONNEL TITLE
 HARRISON _____ COUNTY Seneca. DATE 1/14/49
 HOLCOMBE _____ S. H. _____ WEATHER Cloudy
 SWARDEN _____ SEC. _____ TEMP. +30°
 SOAST _____

DESCRIPTION P.I.'s & ANGLES S.R. # 18

LEFT

CENTER LINE

RIGHT

RECORDED Man. Book # 3 pg. 10-13

64

254+37.35 P.I. Δ = 5°-00' Lt.

x in NE of H.H. 1 NE.



63

239+83.74 P.I. Δ = 3°-08' Rt.

x in NE of H.H. 1 W.



62

217+53.96 P.I. Δ = 0°-17' Rt.

20' Maple



61

186+57.2 P.I. Δ = 1°-22' Rt.

conc. H.H.



60

164+19.53 P.I. Δ = 0°-29' Rt.



59

134+78.58 P.I. Δ = 0°-17' Lt.



58

108+22.5 P.I. Δ = 0°-25' Lt.

24' Hackberry



57

82+55 P.I. Δ = 0°-40' Rt.

Sign Post corner ties

