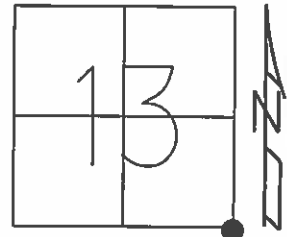


O.D.O.T. DISTRICT 2 SURVEY OFFICE (USE ONLY)

PERSONNEL _____ REFERENCE NO. 63 SHEET 5 OF 17
 NOTES RHOADES DATE 7-8-15 ROUTE SR 18
 H.C. O'DONNELL WEATHER SUNNY COUNTY SENECA
 R.C. HOMAN TEMP. 61°F TOWNSHIP CLINTON
 _____ SECTION 13
 _____ T 2 N R 15 E

TYPE MONUMENT PK NAIL
 ON SURFACE - ~~BELOW~~ _____ ON _____
 LEFT - ☉ PAV'T - ~~RIGHT~~ 3'
7' TO LT EDGE PAVEMENT
 S.L.M. 1054+44



Grid: Northing: 531603.9316 Easting: 1810390.7329

RECORD:
 P.I. $\Delta=3^{\circ}08'$ RT
 STA 239+83.74
 FD RR. SPK @ SURFACE
 6-14-1971

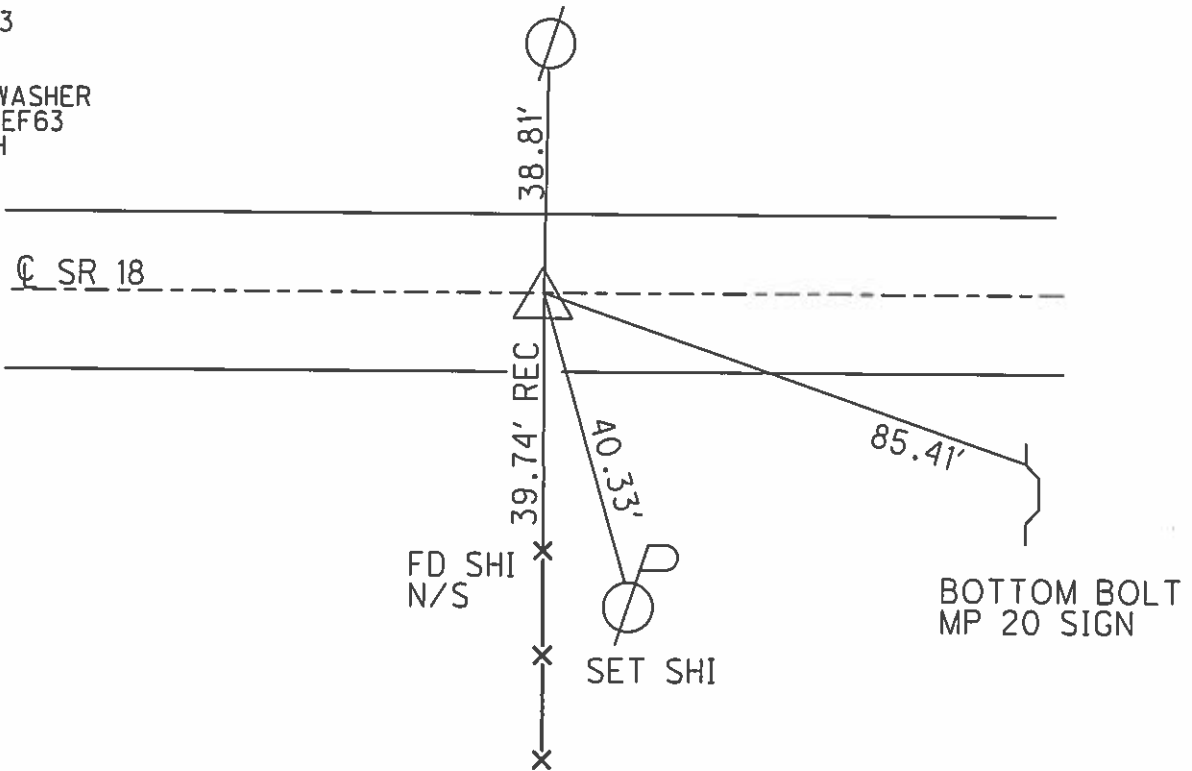
SET PK/WASHER
 8-26-1993, RCC

FD RR. SPK
 GPS, REF63
 05-06-14, JLL, EBW

GPS, REF63
 5-29-14

SET MAG/WASHER
 GPS, NEWREF63
 7-11-16, DCH

FD. SHI
 S/S
 CUT POLE



O.D.O.T. DISTRICT 2 SURVEY OFFICE

PERSONNEL

REFERENCE NO. 63

SHEET 15 OF 24

NOTES CHENEY

H.C. RIPPLE

DATE 7-2-1993

ROUTE #18

R.C. BARBOUR

WEATHER CLOUDY

COUNTY SENECA

GREYMAN

TEMP. 75°

TOWNSHIP CLINTON, SCIPIO

SECTION _____

T2 N R15E16E

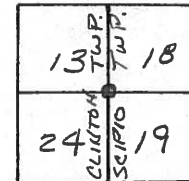
TYPE MONUMENT PK/WASHER

ON SURFACE - ~~BELOW~~ ON

LEFT - CL PAV'T. - ~~POST~~ 3'

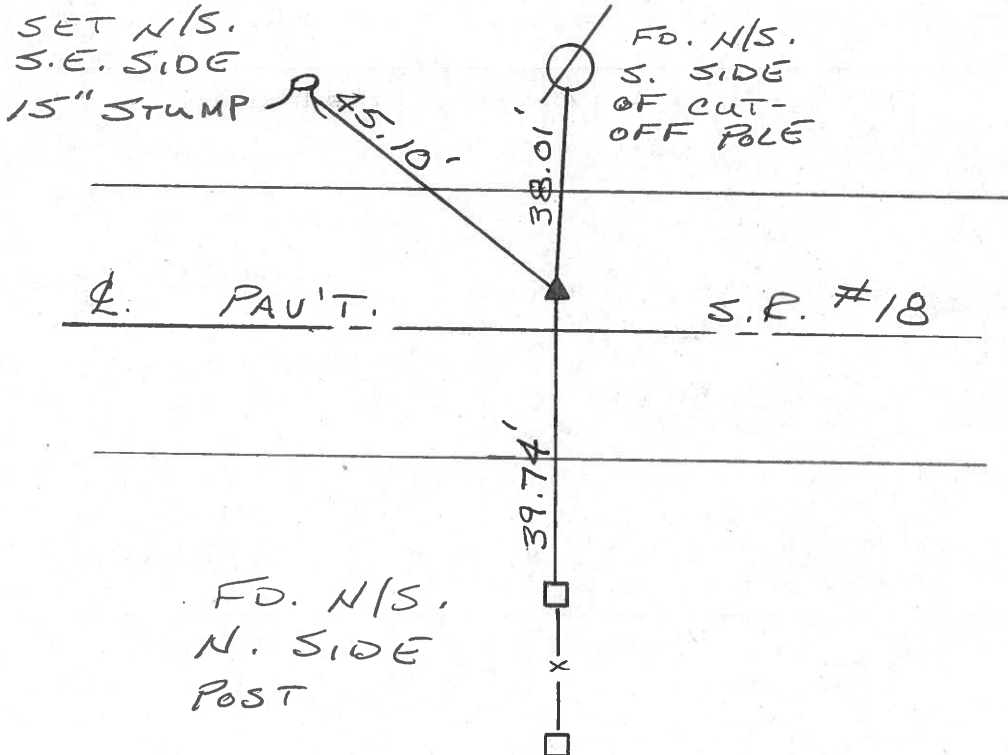
7' TO LT. EDGE PAVEMENT

S.L.M. 1054 + 28



RECORD: 6-14-1971
 P.I. STA. 239+83.74
 $\Delta = 3^{\circ}08'$ RT.
 FD. R.R. SPK. @
 SURFACE.

SET PK/WASHER
 8-26-1993
 RCC



PERSONNEL	TITLE	PERSONNEL	TITLE
<u>Ash</u>			
<u>Gronin</u>			
<u>Ripole</u>			
<u>Anderson</u>			

COUNTY Seneca DATE 11/10/72
 S. R. #10 (S.H. 449) WEATHER overcast
 SEC. K TEMP. 50°

DESCRIPTION Ties for Control Points - Twp. 12 N. East Cor. to Republic JOB NO. _____
 LEFT CENTER LINE RIGHT

(64)

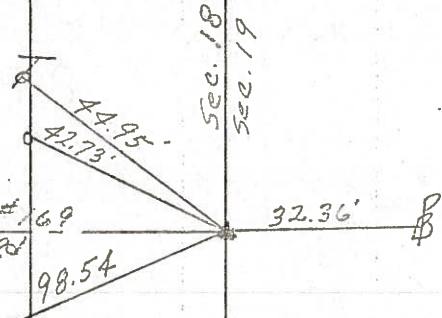
12

$\Delta = 5^{\circ}00' Lt.$
 P.I.
 254+37.35
 Fd. R.R. spike
 on surface

Scipio Twp.

Twp. Rd. #169
 Schubert Rd

conc.
 wall



Tied 6/14/71

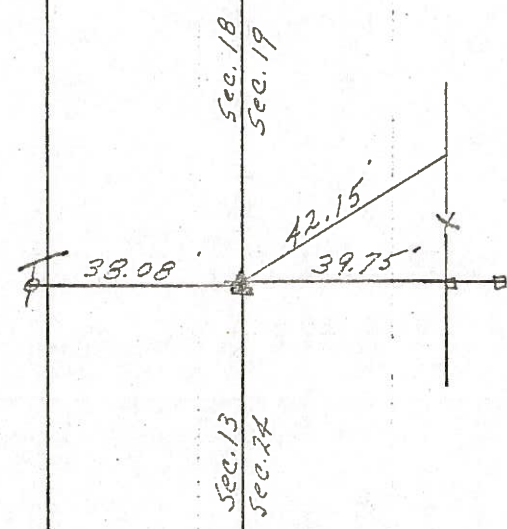
(63)

11

$\Delta = 3^{\circ}08' Rt.$
 P.I.
 239+83.74
 Fd. R.R. spike
 on surface

Scipio Twp.

Clinton Twp.



Tied 6/14/71

PERSONNEL TITLE PERSONNEL TITLE

COUNTY Seneca

DATE 11/10/72

Ash
Cronin
Lipple
Anderson

S. R. #18 (S.H. 449)

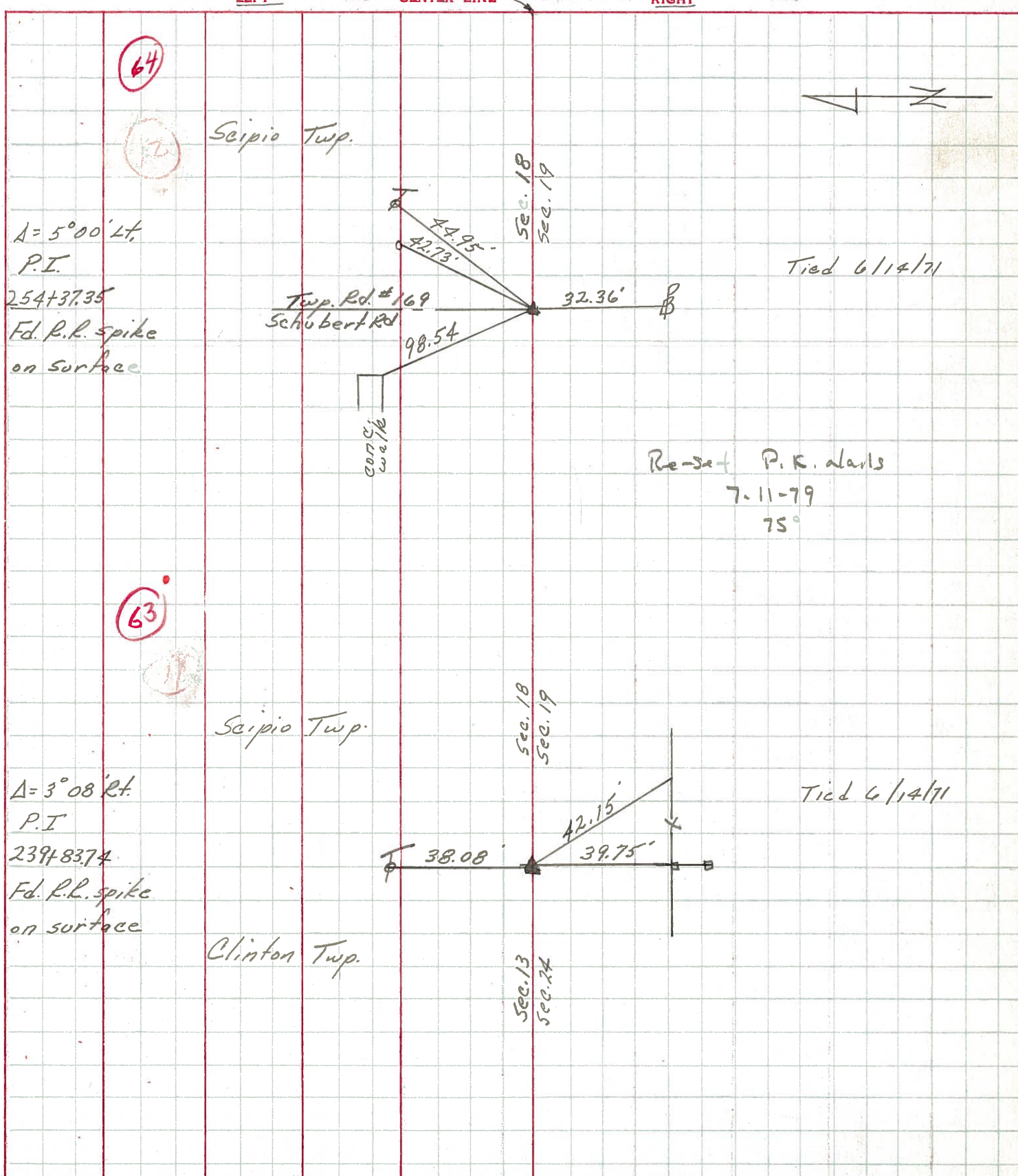
WEATHER overcast

SEC. K

TEMP. 50°

DESCRIPTION Ties for Control Points - Tiffin East Corp. to Republic

JOB NO.



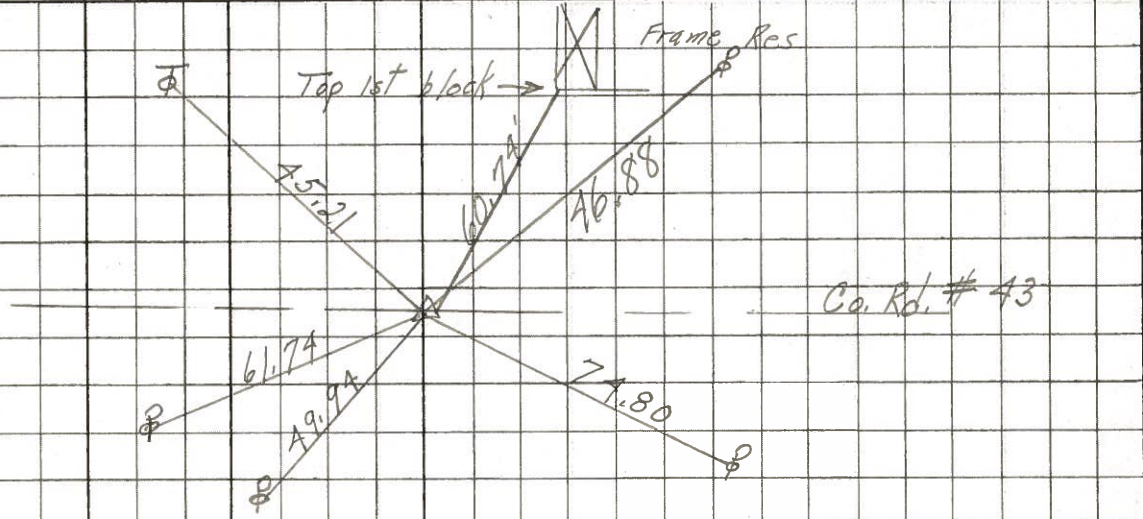
PERSONNEL	TITLE	PERSONNEL	TITLE	COUNTY	DATE
Schneider				Seneca	10-31-68
Barbour				S. R. 18	WEATHER Fair
Redding				SEC. Tiffin to Republic	TEMP. 40°
Potts					

DESCRIPTION Ties for Control Points JOB NO. _____

(66)

295+19.48
R.R. Spk.

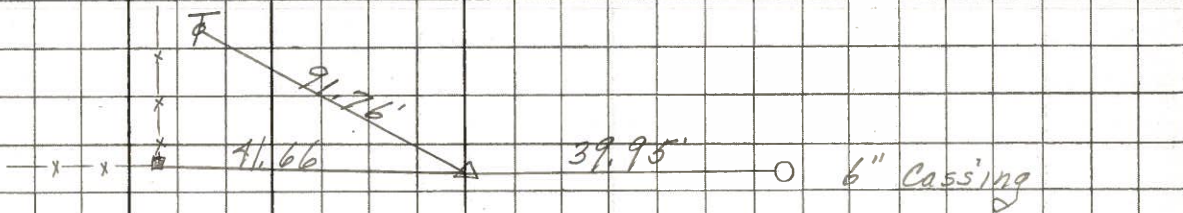
8156



(65)

268+84.38
R.R. Spk.

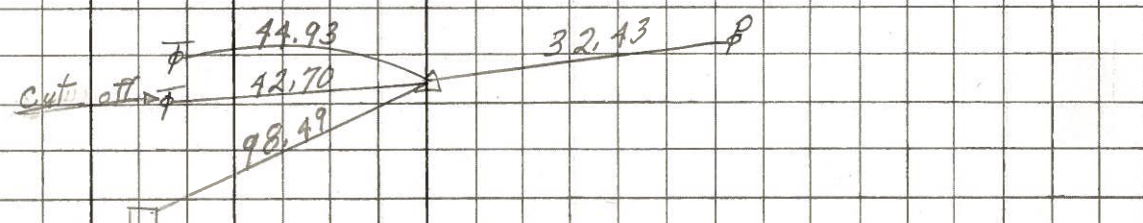
8155



(64)

254+37.35
 $\Delta = 5^\circ 0' Lt.$
R.R. Spk.

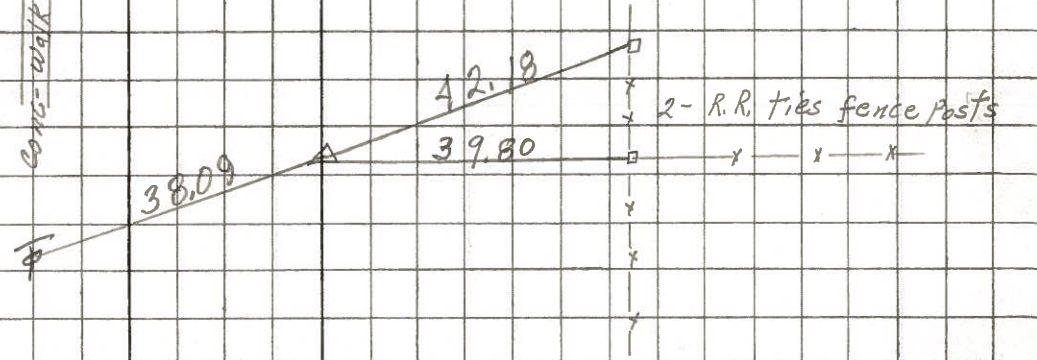
8154



(63)

239+83.74
 $\Delta = 3^\circ 08' Rt.$
R.R. Spk.

8153



PERSONNEL TITLE PERSONNEL TITLE

COUNTY Seneca

DATE 10-31-68
12-23-65

S. R. # 18

WEATHER

SEC K

TEMP.

DESCRIPTION Tiffin - Republic

JOB NO.

LEFT

CENTER LINE

RIGHT

(66)

Sta. 295 + 19.48

45.21 N. E. Tel. Pole

Found R.R. spk.

49.92 N. W. P. Pole

Co. Rd. # 43 North ~~South~~

74.80 S. W. P. Pole

46.87 S. E. P. Pole

~~# 156~~

8156

(65)

Sta. 268 + 84.38

⁹⁵
39.95 S. 6" Iron Pipe F. Post

Found R.R. spk.

⁶⁶
41.40 N. End F. Post

~~# 155~~

81.14 N. W. T. Pole

91.73 N. E. T. Pole

⁷⁶

8155

(64)

Sta. 254 + 37.35

^{32.43}
~~40.64~~ S. P. Pole

$\Delta = 50^{\circ} 0' \text{ Lt.}$

⁹³
44.95 N. E. T. Pole

Found R.R. spk.

⁴⁹
98.54 N. E. S. E. cor. Conc. Wall

~~# 154~~

42.95 R.R. tie cor. post

8154

10-31-68

(63)

Sta. 239 + 83.74

39.79 S. Anchor F. Post

$\Delta = 30^{\circ} 08' \text{ Pt.}$

¹⁸
42.15 S. E. Sq. fence post

Found R.R. spk.

38.08 N. T. Pole

⁰⁹

~~# 153~~

8153

PERSONNEL	TITLE	PERSONNEL	TITLE	PERSONNEL	TITLE	PERSONNEL	TITLE
Morrison							
McLennan							
Shurden							
Soast							

COUNTY Seneca DATE 1/14/49
 S. H. _____ WEATHER Cloudy
 SEC. _____ TEMP. 43°

DESCRIPTION P.I.'s & ANGLES S.R. # 18

LEFT CENTER LINE RIGHT

RECORDED Mon. book # 3 pg. 10-13

64



63



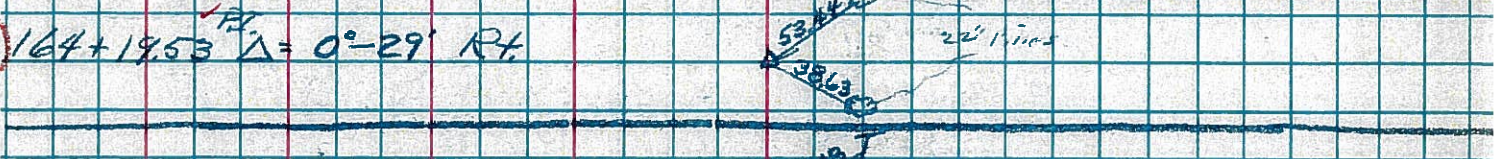
62



61



60



59



58



57

