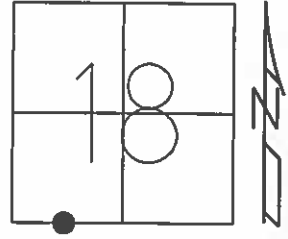


O.D.O.T. DISTRICT 2 SURVEY OFFICE (USE ONLY)

PERSONNEL \_\_\_\_\_ REFERENCE NO. 64 SHEET 6 OF 17  
 NOTES RHOADES DATE 7-8-15 ROUTE SR 18  
 H.C. O'DONNELL WEATHER SUNNY COUNTY SENECA  
 R.C. HOMAN TEMP. 61°F TOWNSHIP SCIPIO  
 \_\_\_\_\_ SECTION 18  
 \_\_\_\_\_ T 2 N R 16 E

TYPE MONUMENT RR. SPIKE  
~~ON SURFACE~~ - BELOW 3"  
~~LEFT~~ - ℄ PAV'T - RIGHT 4.5'  
6' TO RT EDGE PAVEMENT  
 S.L.M. 1068+97.59

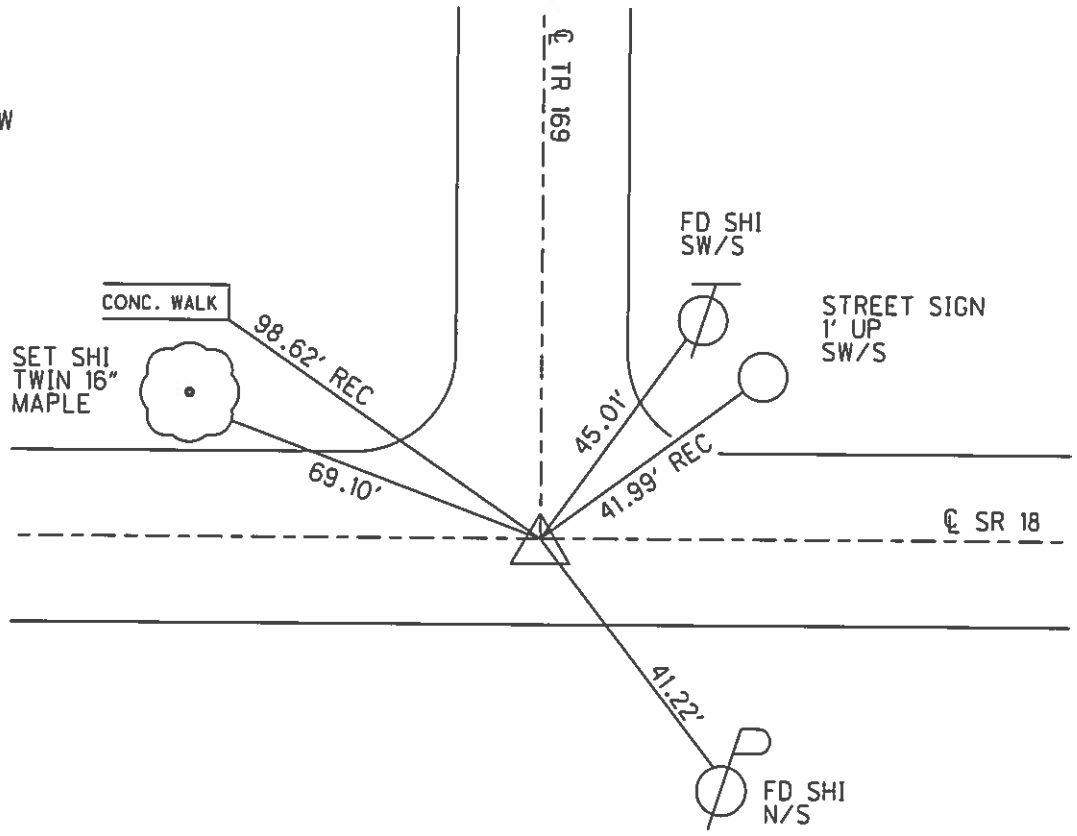


Grid: Northing: 531479.418 Easting: 1811838.8945

RECORD:  
 P.I. Δ=5°00' LT  
 STA 254+37.35  
 FD RR. SPK @ SURFACE  
 6-14-1971

SET PK/WASHER  
 8-26-1993, RCC  
 FD RR. SPK  
 3" BELOW  
 GPS, REF64  
 05-06-14, JLL, EBW  
 GPS, REF64  
 5-29-14

SET MAG/WASHER  
 GPS, NEWREF64  
 7-11-16, DCH



# O.D.O.T. DISTRICT 2 SURVEY OFFICE

PERSONNEL

REFERENCE NO. 64

SHEET 16 OF 24

NOTES CHENEY

H.C. RIPPLE

R.C. BARBOUR

GEYMAN

DATE 7-2-1993

WEATHER CLOUDY

TEMP. 80°

ROUTE #18

COUNTY SENECA

TOWNSHIP SCIPIO

SECTION 18 E. 19

T2 N R 16 E

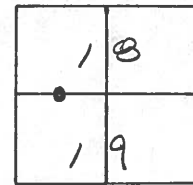
TYPE MONUMENT PK/WASHER

ON SURFACE - ~~BELOW~~ ON

~~LEFT~~ - E. PAV'T. - RIGHT 4.5' (ON E. PAV'T. T.R.#169)

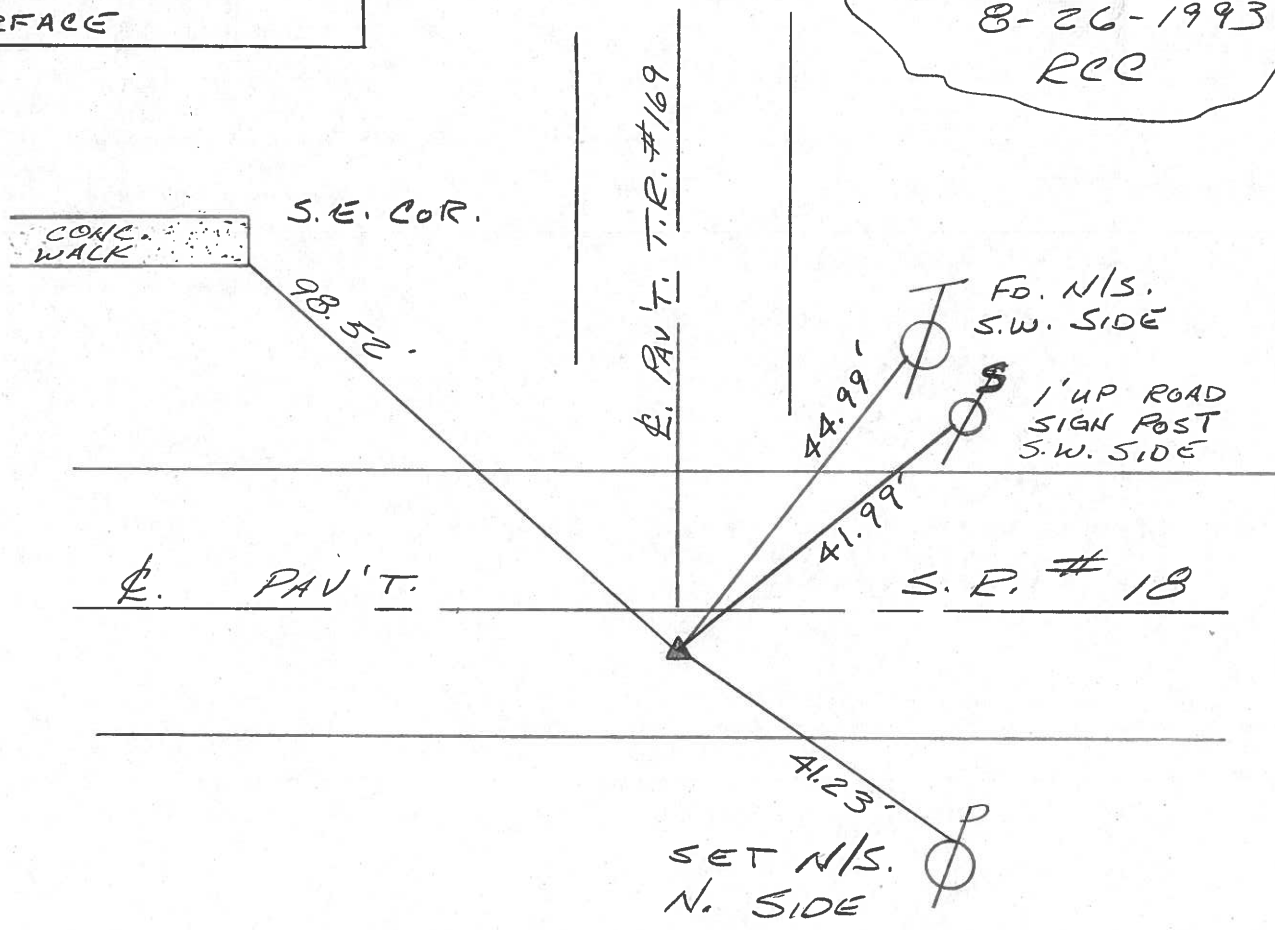
6' TO RT. EDGE PAVEMENT

S.L.M. 1068+84



RECORD: 6-14-1971  
 P.I. STA. 254+37.35  
 $\Delta = 5^{\circ}00'$  LT.  
 FD. BR. SPK. ON SURFACE

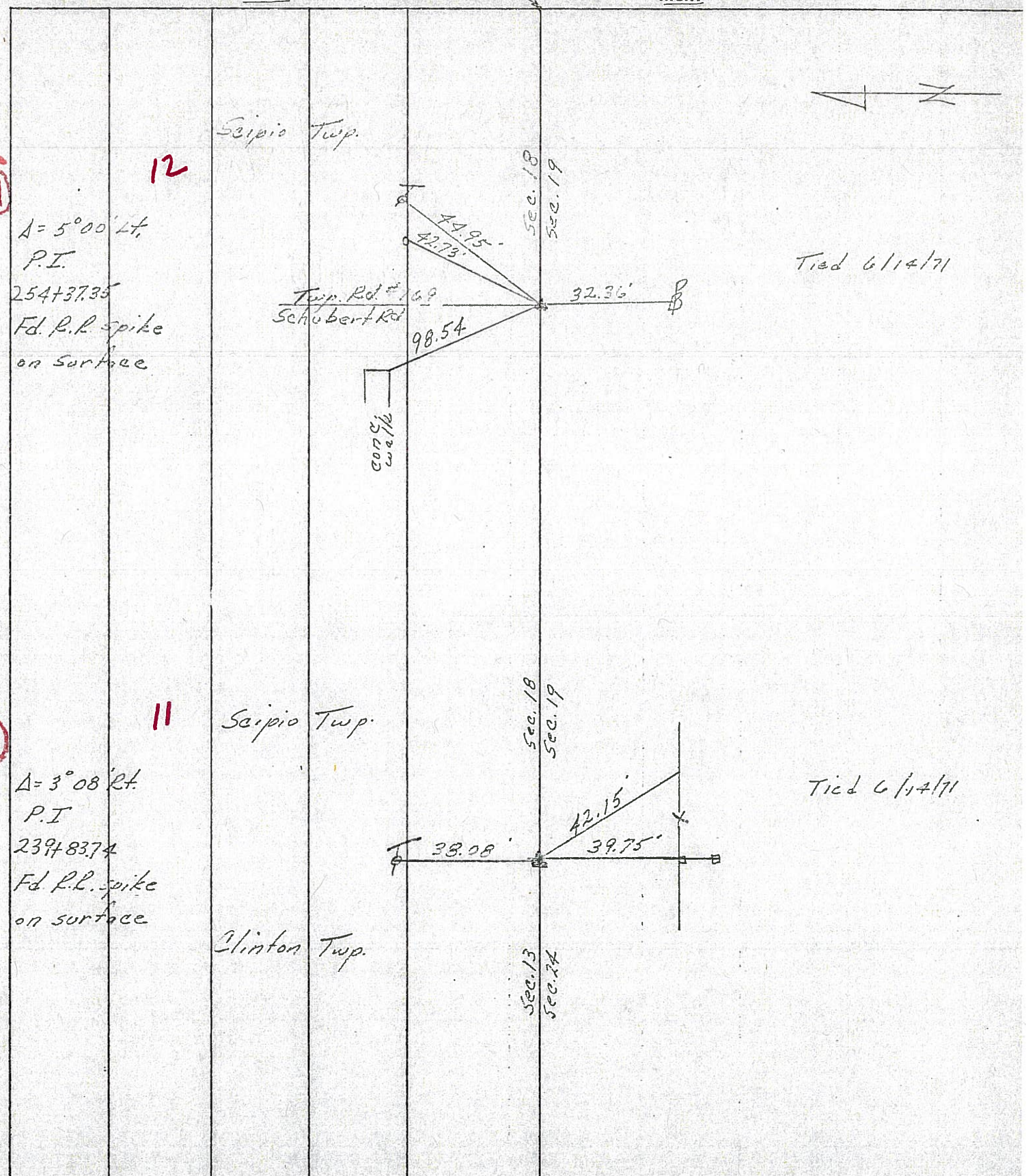
SET PK/WASHER  
 8-26-1993  
 RCC





PERSONNEL	TITLE	PERSONNEL	TITLE	COUNTY	DATE	WEATHER	TEMP.
Ash				Seneca	11/10/72	overcast	50°
Cronin				S. R. #18 (S.H. 449)			
Lippie				SEC. K			
Anderson							

DESCRIPTION *Ties for Control Points - T.T. in East Cor. to Republic* JOB NO.



(64)

12

$\Delta = 5^\circ 00' \text{ Lt.}$   
 P.I.  
 254+37.35  
 Fd. R.L. spike  
 on surface

(63)

11

$\Delta = 3^\circ 08' \text{ Rt.}$   
 P.I.  
 239+83.74  
 Fd. R.L. spike  
 on surface

Clinton Twp.



PERSONNEL TITLE PERSONNEL TITLE

Ash  
Cronin  
Ripple  
Anderson

COUNTY Seneca

DATE 11/10/72

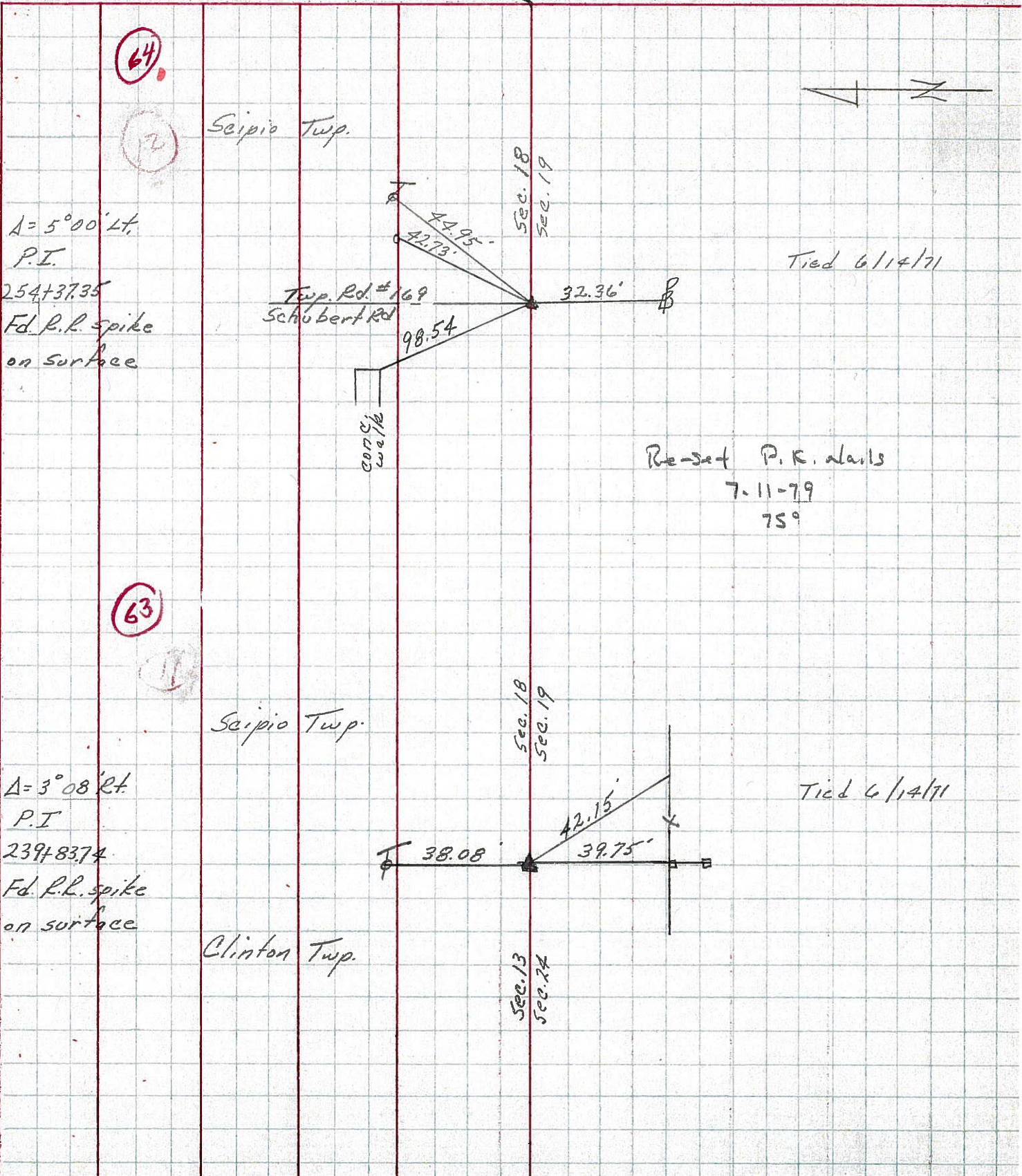
S. R. #18 (S.H. 449)

WEATHER overcast

SEC. K

TEMP. 50°

DESCRIPTION Ties for Control Points - T. Tiffin East Corp. to Republic JOB NO.



64

2

$\Delta = 5^{\circ}00' Lt.$   
P.I.  
254+37.35  
Fd. P.R. spike  
on surface

Twp. Rd. #169  
Schubert Rd

concrete well

Tied 6/14/71

Re-set P.R. nails  
7-11-79  
75°

63

11

$\Delta = 3^{\circ}08' Rt.$   
P.I.  
239+83.74  
Fd. P.R. spike  
on surface

Clinton Twp.

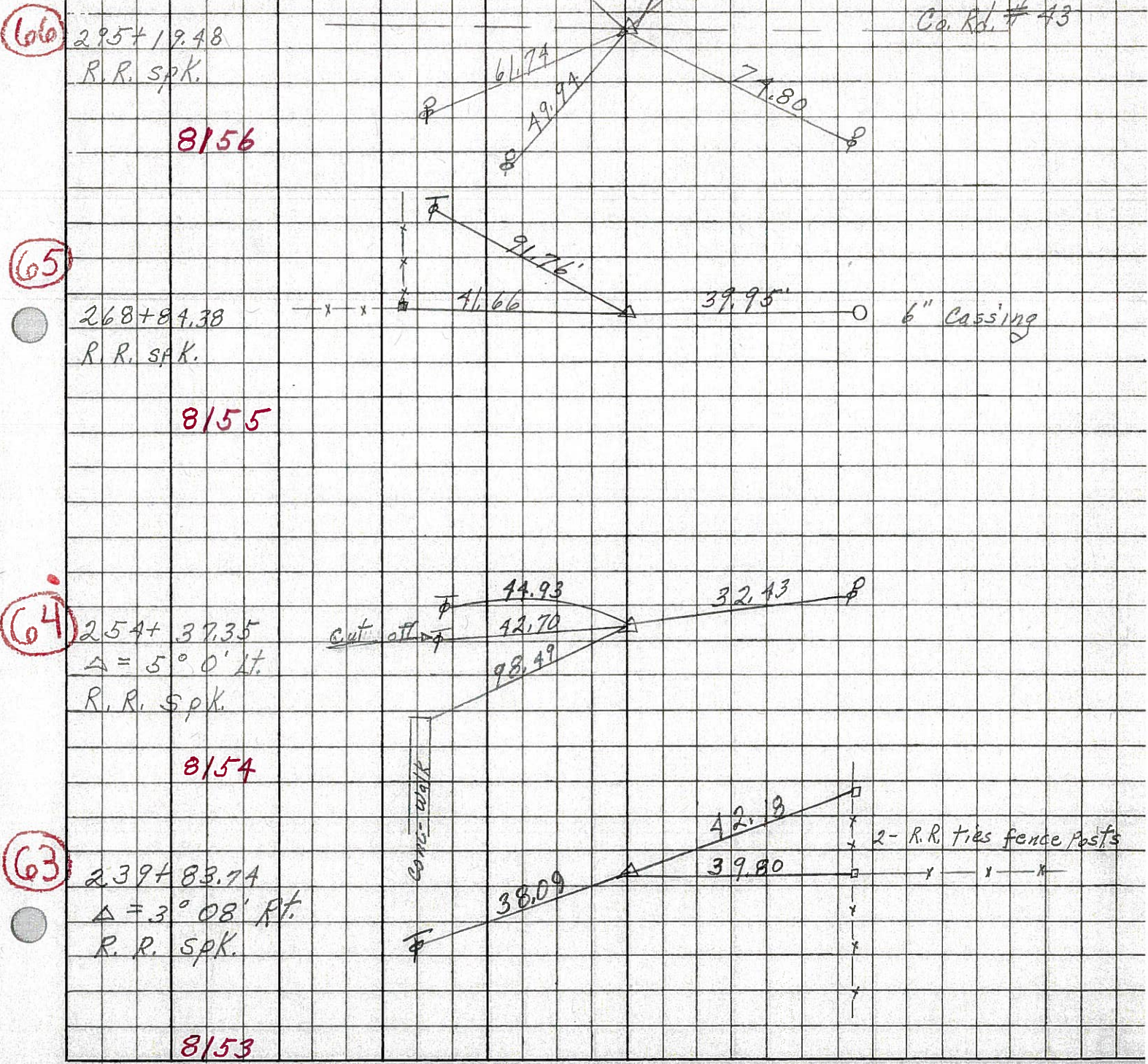
Tied 6/14/71



PERSONNEL	TITLE	PERSONNEL	TITLE	COUNTY	DATE	WEATHER	TEMP.
Schneider				Seneca	10-31-68	Fair	40°
Barbour				S. R. 18			
Redding				SEC. Tiffin to Republic			
Potts							

DESCRIPTION: Ties for Control Points

LEFT CENTER LINE RIGHT JOB NO.





PERSONNEL TITLE PERSONNEL TITLE

COUNTY Seneca

DATE 10-31-68  
12-23-65

S. R. # 18

WEATHER

SEC. K

TEMP.

DESCRIPTION Tiffin - Republic

JOB NO.

LEFT

CENTER LINE

RIGHT

(66)

Sta. 295 + 19.48

45.21 N.E. Tel. Pole

Found R.R. spk.

49.92 N.W. P. Pole

Co. Rd. # 43 North & South

74.80 S.W. P. Pole

46.87 S.E. P. Pole

~~# 8156~~

8156

(65)

Sta. 268 + 84.38

<sup>95</sup>  
39.93 S. 6" Iron Pipe F. Post

Found R.R. spk.

<sup>66</sup>  
41.40 N. End F. Post

~~# 8155~~

81.14 N.W. T. Pole

91.73 N.E. T. Pole

<sup>76</sup>

8155

(64)

Sta. 254 + 37.35

32.43  
~~40.64~~ S. P. Pole

$\Delta = 50^{\circ} 0' 11''$

<sup>93</sup>  
44.95 N.E. T. Pole

Found R.R. spk.

<sup>49</sup>  
98.54 N.E. S.E. cor. Conc. Wall

~~# 8154~~

42.98 R.R. tie cor. Post

8154

10-31-68

(63)

Sta. 239 + 83.74

39.79 S. Anchor F. Post

$\Delta = 30^{\circ} 08' 11''$

<sup>18</sup>  
42.15 S.E. Sq. Fence Post

Found R.R. spk.

38.08 N. T. Pole

<sup>09</sup>

~~# 8153~~

8153



PERSONNEL	TITLE	PERSONNEL	TITLE	PERSONNEL	TITLE	PERSONNEL	TITLE
MARRISON				COUNTY	Seneca	DATE	1/14/89
MCCORMACK				S. H.		WEATHER	Cloudy
SURDEN				SEC.		TEMP.	43°
SOAST							

DESCRIPTION P.I.'s & ANGLES S.R. # 18

LEFT CENTER LINE RIGHT

RECORDED Man. book # 3 pg. 10-13

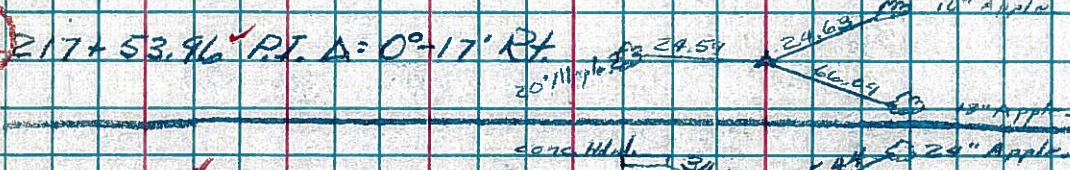
64



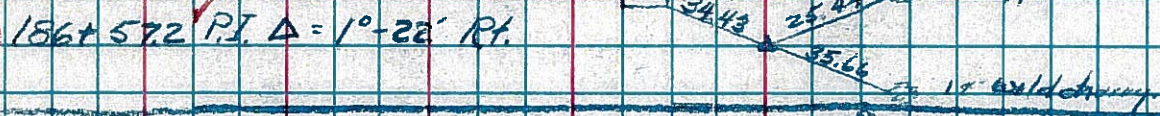
63



62



61



60



59



58



57

