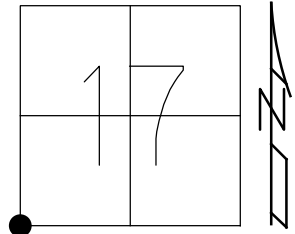


O.D.O.T. DISTRICT 2 SURVEY OFFICE (USE ONLY)

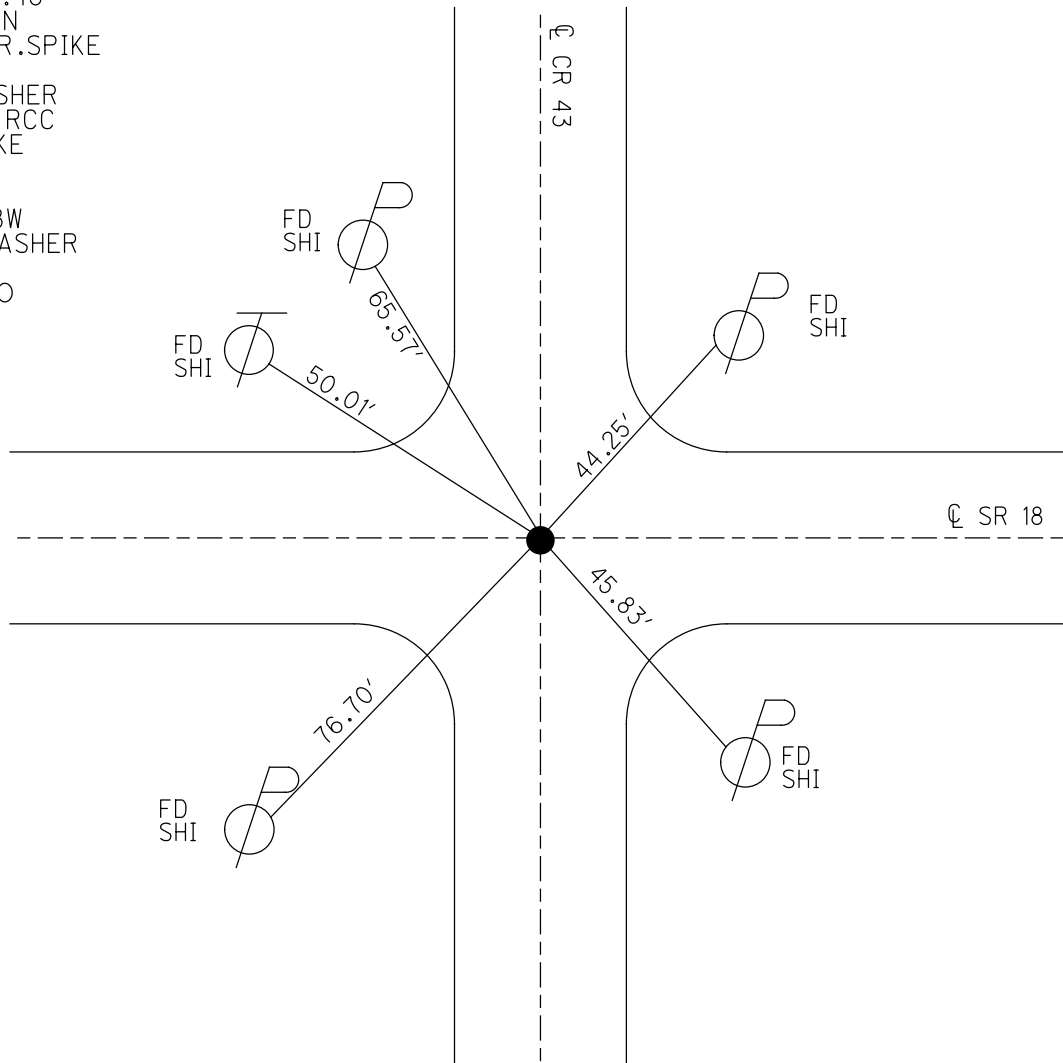
PERSONNEL \_\_\_\_\_ REFERENCE NO. 66 SHEET 8 OF 14  
 NOTES RHOADES DATE 7-8-15 ROUTE SR 18  
 H.C. O'DONNELL WEATHER SUNNY COUNTY SENECA  
 R.C. HOMAN TEMP. 61°F TOWNSHIP SCIPPIO  
 \_\_\_\_\_ SECTION 17  
 \_\_\_\_\_ T 2 N R 16 E

TYPE MONUMENT RR. SPIKE  
~~ON SURFACE~~ - BELOW 3"  
~~LEFT~~ - ☉ PAV'T - RIGHT 1'  
11' TO LT EDGE PAVEMENT  
 S.L.M. 1109+77.68

Grid: Northing: 531481.294 Easting: 1815919.0925



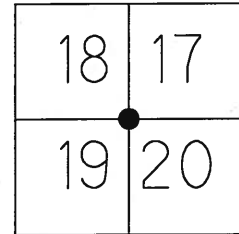
RECORD: P.I.  
 $\Delta=1^{\circ}03'$  LT  
 STA 295+19.48  
 FD 3/4" IPIN  
 SET SM. R.R.SPIKE  
 6-14-1971  
 SET PK/WASHER  
 8-26-1993, RCC  
 FD RR. SPIKE  
 3" DOWN  
 REF66  
 5-29-14, EBW  
 SET MAG/WASHER  
 NEWREF66  
 7-12-16, JFO



O.D.O.T. DISTRICT 2 SURVEY OFFICE (USE ONLY)

PERSONNEL \_\_\_\_\_ REFERENCE NO. 66 SHEET 2 OF 5  
 NOTES HOMAN DATE 07-16-08 ROUTE SR#18  
 H.C. HOMAN WEATHER SUNNY COUNTY SENECA  
 R.C. ROUSOS TEMP. +80° TOWNSHIP SCIPIO  
 \_\_\_\_\_ SECTION 17,18,19,20  
 \_\_\_\_\_ T 2 N R 16 E

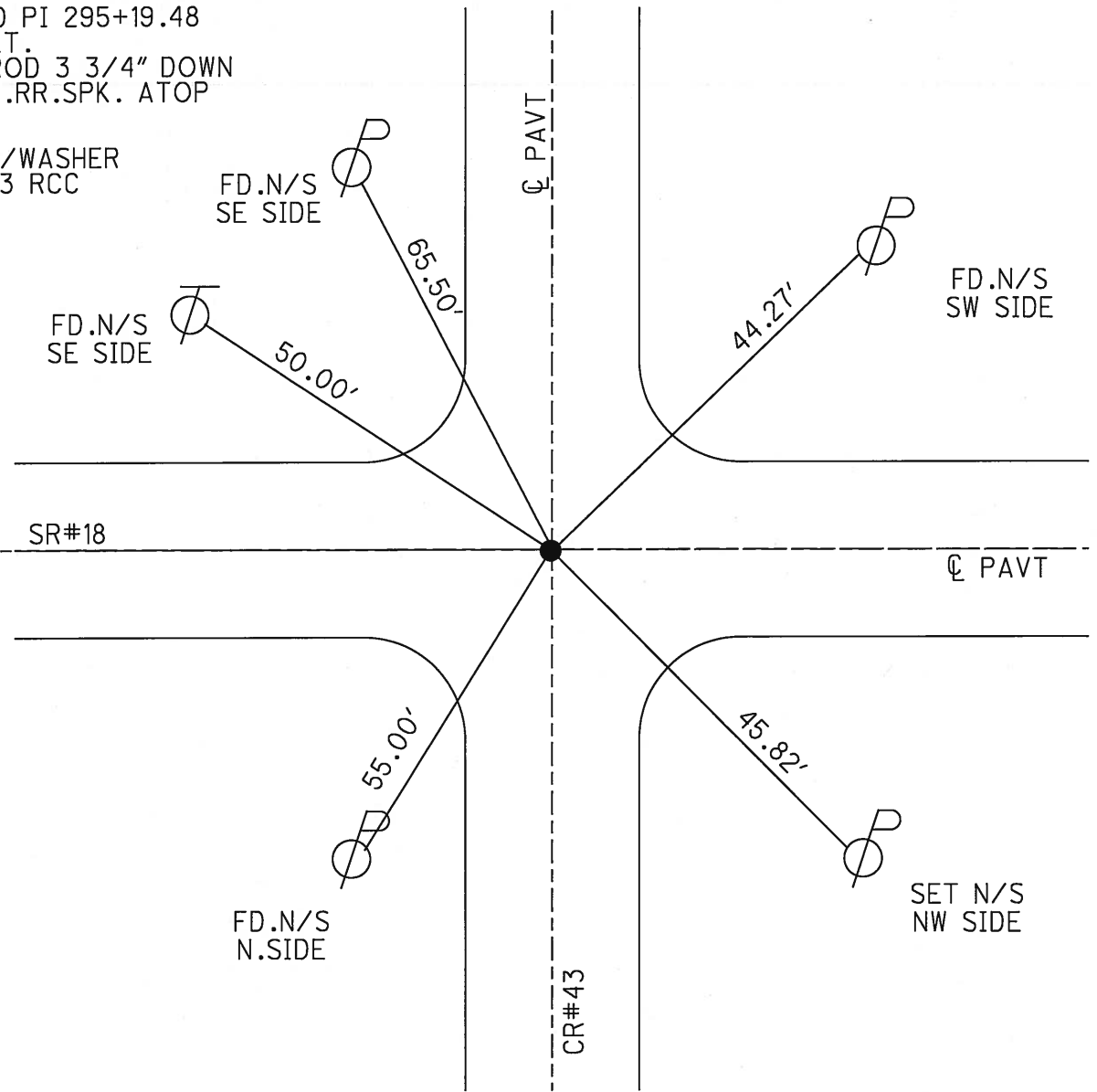
TYPE MONUMENT FD PK/WASHER  
 ON SURFACE - ~~BELOW~~ ON SURFACE  
~~LEFT~~ - C PAV'T - ~~RIGHT~~ ON CL.CR#43  
11' TO LT. EDGE PAVEMENT  
 S.L.M. 1110+91.20 REF66



Grid: Northing: 531481.33 Easting: 1815918.99

RECORD PI 295+19.48  
 01°03'LT.  
 FD. I ROD 3 3/4" DOWN  
 SET SM.RR.SP.K. ATOP  
 6-14-71

SET PK/WASHER  
 8-26-93 RCC



O.D.O.T. DISTRICT 2 SURVEY OFFICE

PERSONNEL

REFERENCE NO. 66

SHEET 18 OF 24

NOTES CHENEY

H.C. RIPPLE

DATE 7-2-1993

ROUTE #18

R.C. BARBOUR

WEATHER CLOUDY

COUNTY JENECA

GEYMAN

TEMP. 80°

TOWNSHIP SCIPIO

SECTION 17, 18, 19 & 20

T 2 N R 16 E

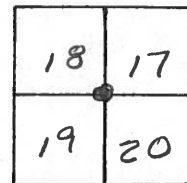
TYPE MONUMENT PK/WASHER

ON SURFACE - ~~BLOW~~ ON

~~LEFT~~ - CL PAV'T. - ~~RIGHT~~ ON (ON E. PAV'T. C.R. #43)

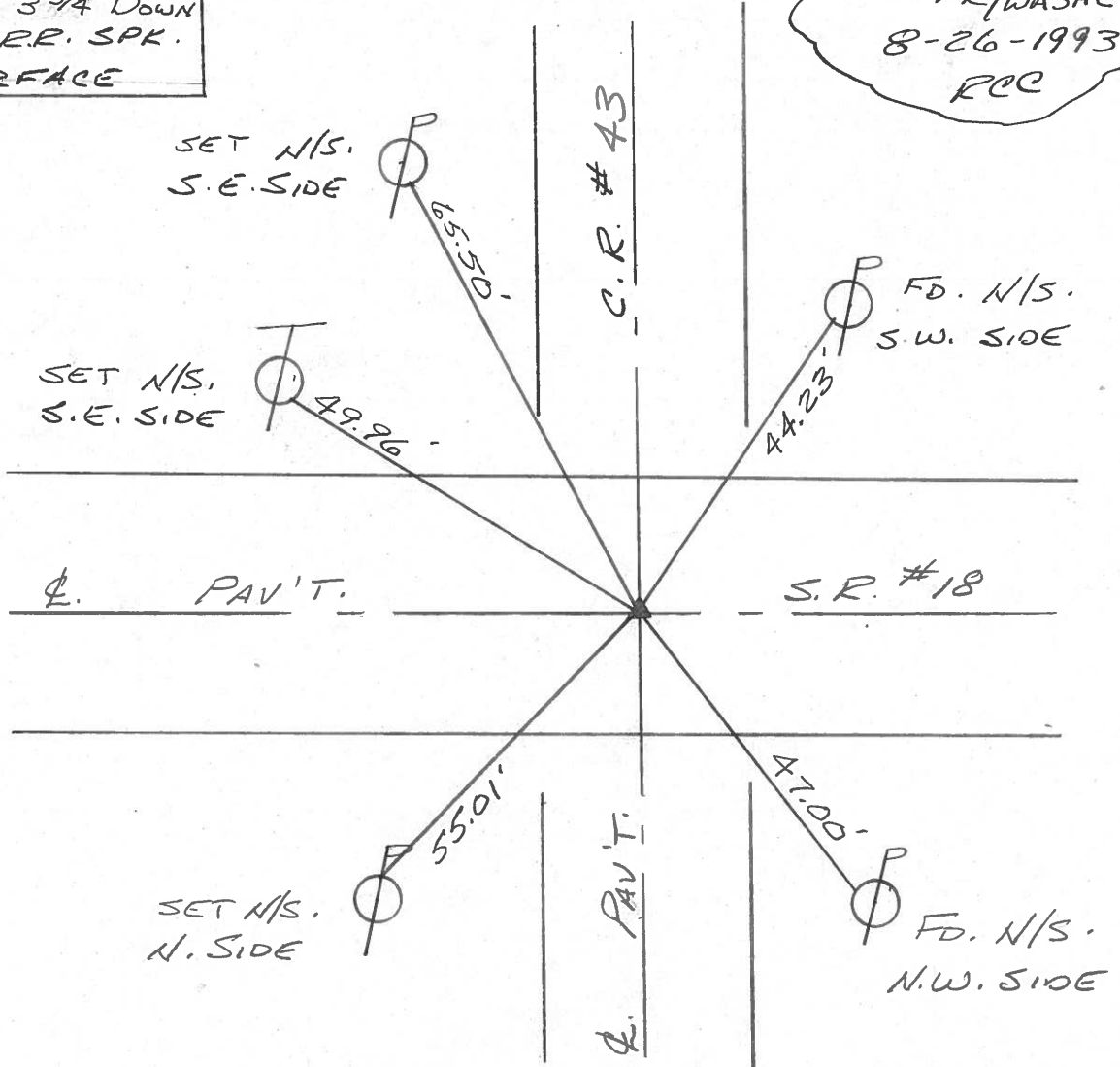
11' TO LT. EDGE PAVEMENT

S.L.M. 1109+72



RECORD: 6-14-1971  
 P.I. STA. 295+19.48  
 $\Delta = 01^{\circ}03'$  LT.  
 F.D. I. F.D. 3 3/4" DOWN  
 SET SMALL R.R. SPK.  
 ATOP @ SURFACE

SET PK/WASHER  
 8-26-1993  
 RCC



PERSONNEL TITLE PERSONNEL TITLE

Ash  
Cronin  
Ripple  
Anderson

COUNTY Seneca

DATE 11/10/72

S. R. #18 (S.H. 449)

WEATHER overcast

SEC. K

TEMP 50°

DESCRIPTION Ties for Control Points - Tiffin East Corp to Republic

JOB NO.

LEFT CENTER LINE RIGHT

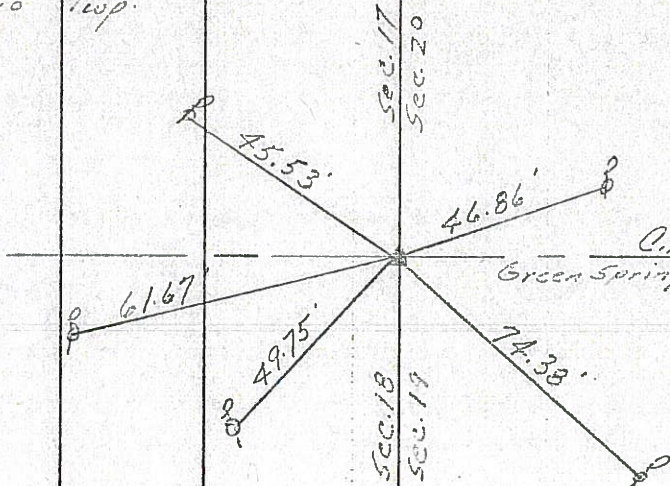


(66)

14

Scipio Twp.

$\Delta = 1^{\circ} 03' 44''$   
P.I.  
295+19.48  
Fd. I. rod  $3\frac{3}{4}''$   
below surface  
Set small R.L. spike  
at top,  $\epsilon$  to the surface



Tied 6/14/71

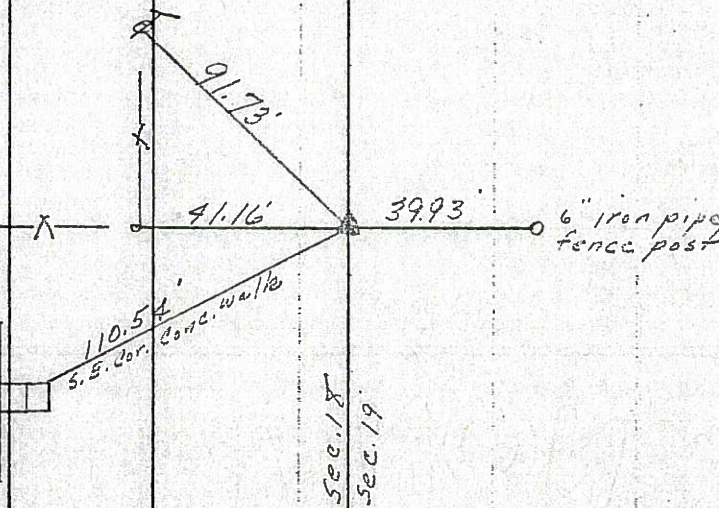
(65)

13

Scipio Twp.

$\Delta = 00^{\circ} 07' 44''$   
P.I.  
268+84.38  
Fd. R.L. spike  
on surface

1 story frame



Tied 6/14/71

PERSONNEL TITLE PERSONNEL TITLE

COUNTY *Seneca*

DATE *11/10/72*

*Ash*

*Cronin*

*Ripple*

*Anderson*

S. R. *#18 (S.H. 449)*

WEATHER *overcast*

SEC. *K*

TEMP. *50°*

DESCRIPTION *Ties for Control Points - Tiffin East Corp to Republic*

JOB NO.

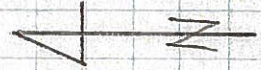
LEFT

CENTER LINE

RIGHT

**66**

*Scipio Twp.*



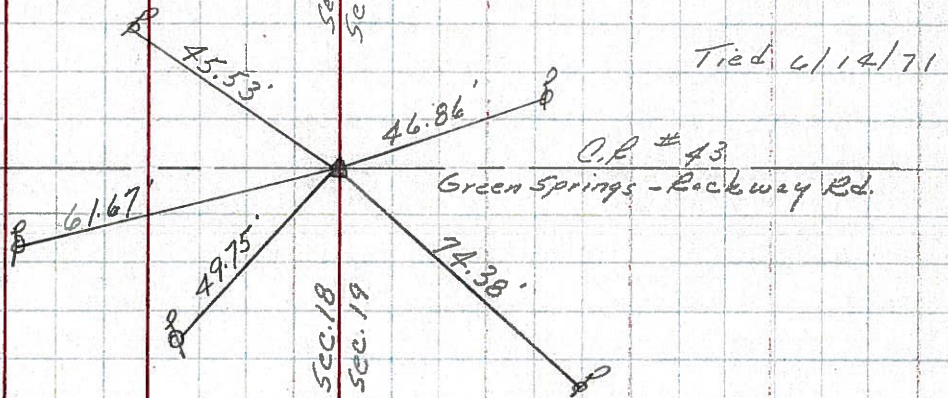
$A = 1^{\circ} 03' Lt.$

P.I.

*295+19.48*

*Fd. I. rod 3 3/4" below surface*

*Set small P.R. spike at top of the surface*



*Re-Set P.R. Nails*

*7-11-79*

*75°*

**65**

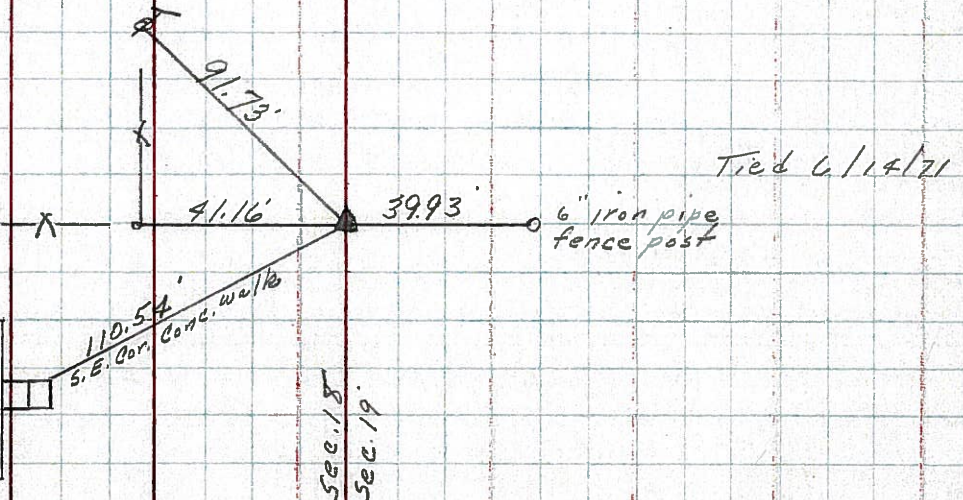
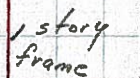
*Scipio Twp.*

$A = 00^{\circ} 07' Lt.$

P.I.

*268+84.38*

*Fd. P.R. spike on surface*

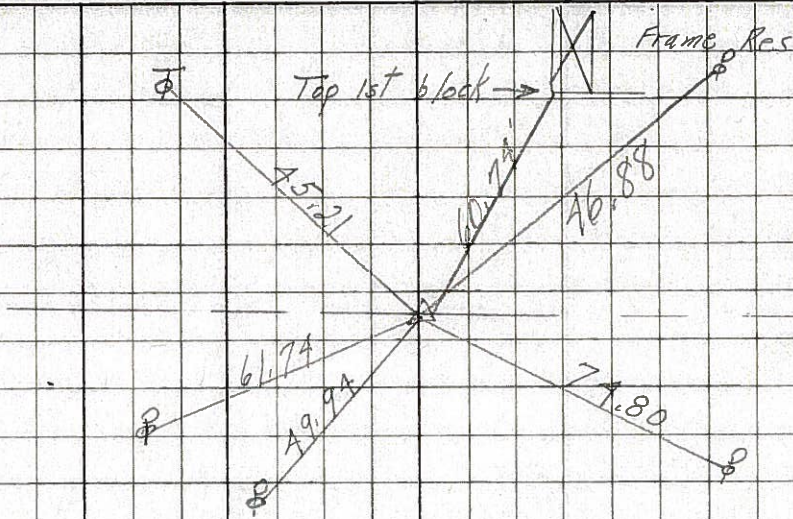


PERSONNEL	TITLE	PERSONNEL	TITLE	COUNTY	Seneca	DATE	10-31-68
Schneider				S. R.	L8	WEATHER	Fair
Barbour				SEC.	Tiffin to Republic	TEMP.	40°
Redding				DESCRIPTION	Ties for Control Points		
Potts				LEFT	CENTER LINE	RIGHT	JOB NO.

(60)

295+19.48  
R.R. SPK.

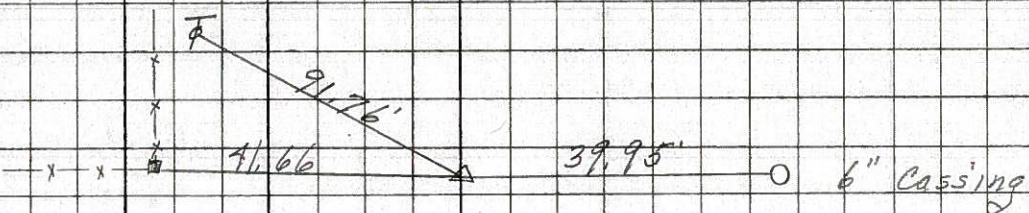
8156



(65)

268+84.38  
R.R. SPK.

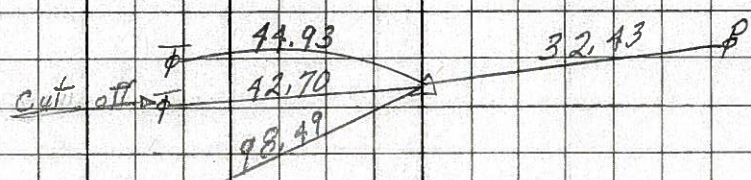
8155



(64)

254+37.35  
 $\Delta = 5^\circ 0' Lt.$   
R.R. SPK.

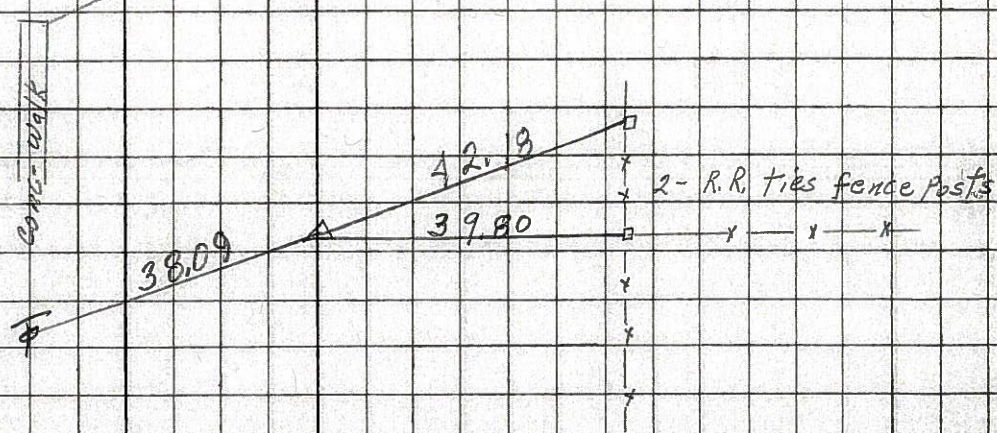
8154



(63)

239+83.74  
 $\Delta = 3^\circ 08' Rt.$   
R.R. SPK.

8153



PERSONNEL TITLE PERSONNEL TITLE

COUNTY Seneca

DATE 10-31-68  
12-23-65

S. R. # 18

WEATHER

SEC. K

TEMP.

DESCRIPTION Tiffin - Republic

JOB NO.

LEFT CENTER LINE RIGHT

(66)

sta. 295 + 19.48  
Found R.R. spk.  
Co. Rd. #43 North & South

45.21 N.E. Tel. Pole  
49.92 N.W. P. Pole  
74.80 S.W. P. Pole  
46.87 S.E. P. Pole

~~# 8156~~

8156

(65)

sta. 268 + 84.38  
Found R.R. spk.

<sup>95</sup>  
39.75 S. 6" Iron Pipe F. Post  
41.40<sup>66</sup> N. End F. Post  
~~81.14~~ N.W. T. Pole  
91.73<sup>76</sup> N.E. T. Pole

~~# 8155~~

8155

(64)

sta. 254 + 37.35  
 $\Delta = 50^{\circ} 0' Lt.$   
Found R.R. spk.

32.43  
~~40.64~~ S. P. Pole  
44.93<sup>93</sup> N.E. T. Pole  
98.54<sup>49</sup> N.E. S.E. cor. Conn. Wal.  
42.98<sup>70</sup> R.R. tie cor. Post

~~# 8154~~

8154

10-31-68

(63)

sta. 239 + 83.74  
 $\Delta = 30^{\circ} 08' Rt.$   
Found R.R. spk.

39.79 S. Anchor F. Post  
42.15<sup>18</sup> S.E. Sq. Force Post  
38.08<sup>09</sup> N. T. Pole

~~# 8153~~

8153

PERSONNEL	TITLE	PERSONNEL	TITLE	PERSONNEL	TITLE	PERSONNEL	TITLE
MORRISON	EA, I-C						
HOLCOMBE	EA, I-C						
SWORDEN	EA, I-D						
KRABILL	EA, I-C						

YTH COUNTY Sonoma DATE 3/15/49  
 S. R. WEATHER Windy  
 SEC. TEMP. +28°  
 DESCRIPTION Ref Ties Last 3 MI. S.R. #18 JOB NO. \_\_\_\_\_

