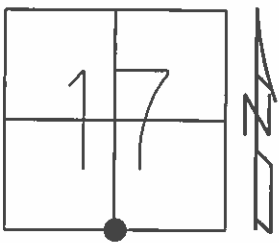


O.D.O.T. DISTRICT 2 SURVEY OFFICE (USE ONLY)

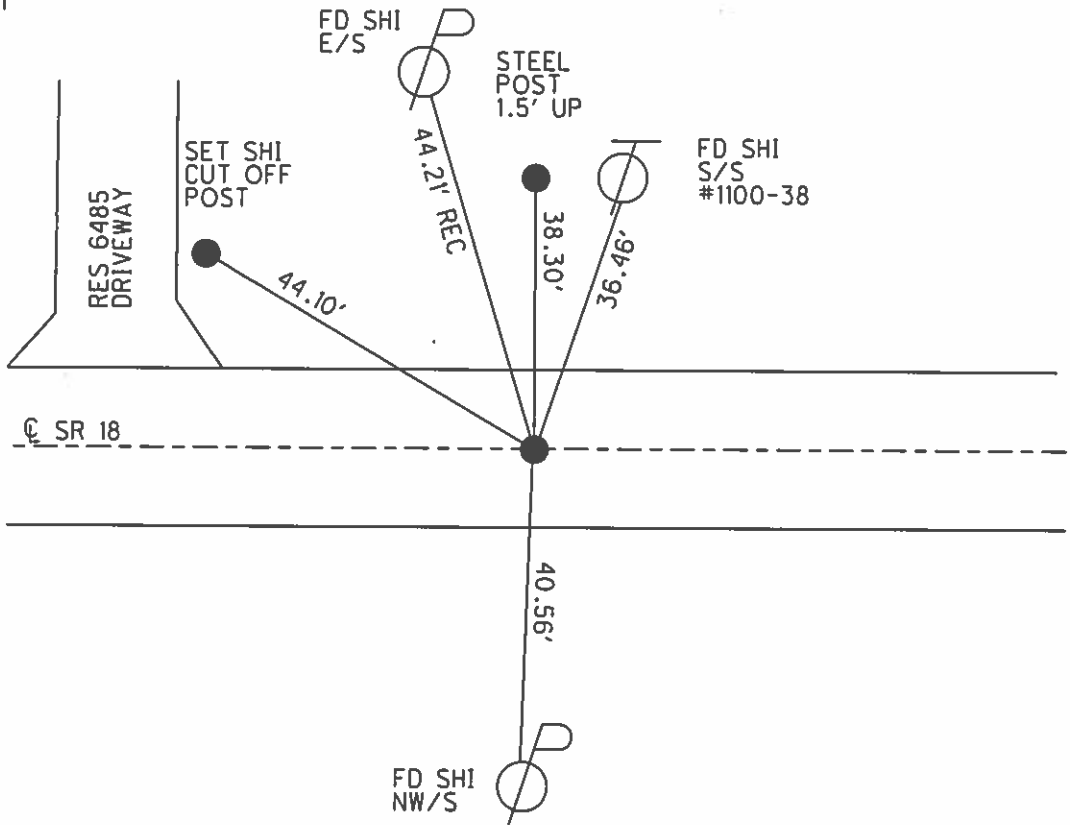
PERSONNEL \_\_\_\_\_ REFERENCE NO. 67 SHEET 9 OF 17  
 NOTES RHOADES DATE 7-8-15 ROUTE SR 18  
 H.C. O'DONNELL WEATHER SUNNY COUNTY SENECA  
 R.C. HOMAN TEMP. 61°F TOWNSHIP SCIPIO  
 \_\_\_\_\_ SECTION 17  
 \_\_\_\_\_ T 2 N R 16 E

TYPE MONUMENT PK/WASHER  
~~ON SURFACE~~ - BELOW 1.5"  
 LEFT - ☉ PAV'T - ~~RIGHT~~ 1.5'  
10' TO LT EDGE PAVEMENT  
 S.L.M. 1136+20.92



Grid: Northing: 531532.3321 Easting: 1818561.8099

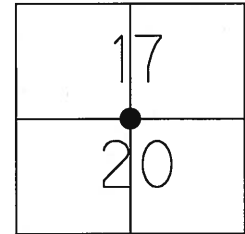
RECORD:  
 P.I. Δ=0°25' RT  
 STA 321+62.14  
 FD RR. SPIKE 4" BELOW  
 SET SM. RR. SPK. ATOP  
 6-14-1971  
  
 FD RR. SPK  
 1.5" BELOW  
 GPS, REF67  
 05-07-14, JLL, EBW  
  
 SET MAG/WASHER  
 GPS, NEWREF67  
 7-14-16, JFO



O.D.O.T. DISTRICT 2 SURVEY OFFICE (USE ONLY)

PERSONNEL	REFERENCE NO. <u>67</u>	SHEET <u>3</u> OF <u>5</u>
NOTES <u>HOMAN</u>	DATE <u>07-16-08</u>	ROUTE <u>SR#18</u>
H.C. <u>HOMAN</u>	WEATHER <u>SUNNY</u>	COUNTY <u>SENECA</u>
R.C. <u>ROUSOS</u>	TEMP. <u>+80°</u>	TOWNSHIP <u>SCIPIO</u>
		SECTION <u>17 &amp; 20</u>
		T <u>2</u> N R <u>16</u> E

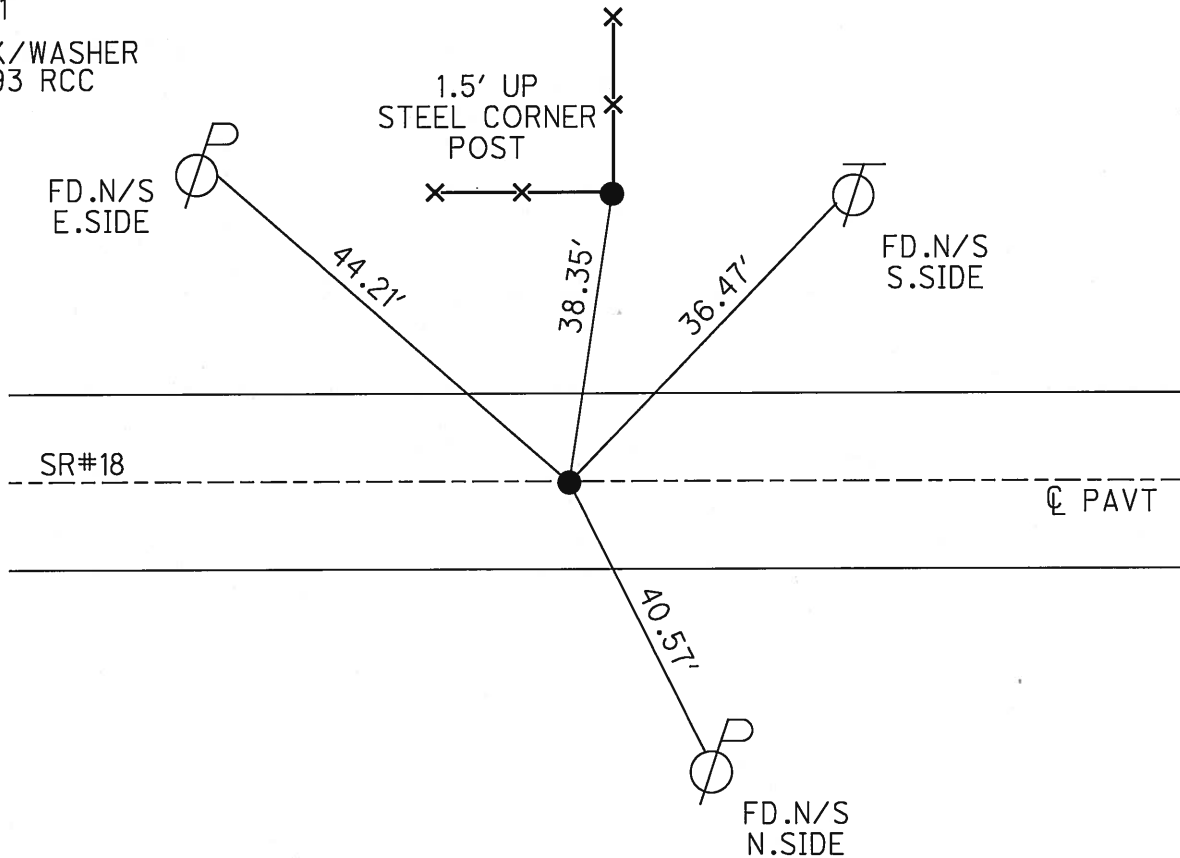
TYPE MONUMENT FD PK/WASHER  
 ON SURFACE - ~~BELOW~~ ON SURFACE  
 LEFT - ~~C PAV'T - RIGHT~~ 1.0' LT.  
10' TO LT. EDGE PAVEMENT  
 S.L.M. 1137+34.47 REF67



Grid: Northing: 531532.36 Easting: 1818561.77

RECORD PI 321+62.14  
 00°25' RT.  
 FD.RR.SP.K.4" DOWN  
 SET SM.RR.SP.K ATOP  
 6-14-71

SET PK/WASHER  
 8-26-93 RCC



O.D.O.T. DISTRICT 2 SURVEY OFFICE

PERSONNEL

REFERENCE NO. 67

SHEET 19 OF 24

NOTES CHENEY

H.C. RIPPLE

DATE 7-2-1993

ROUTE #18

R.C. BARBOUR

WEATHER Cloudy

COUNTY SENECA

GEYMAN

TEMP. 80°

TOWNSHIP Scipio

SECTION 17 & 20

T 2N R 16E

TYPE MONUMENT PK/WASHER

ON SURFACE - ~~BELOW~~ ON

LEFT - ℄ PAV'T. - RIGHT 1'

10' TO LT. EDGE PAVEMENT

S.L.M. 1134+20

17	
20	



RECORD: 6-14-1971

P.I. STA.

$\Delta = 00^\circ 25' \text{ RT.}$

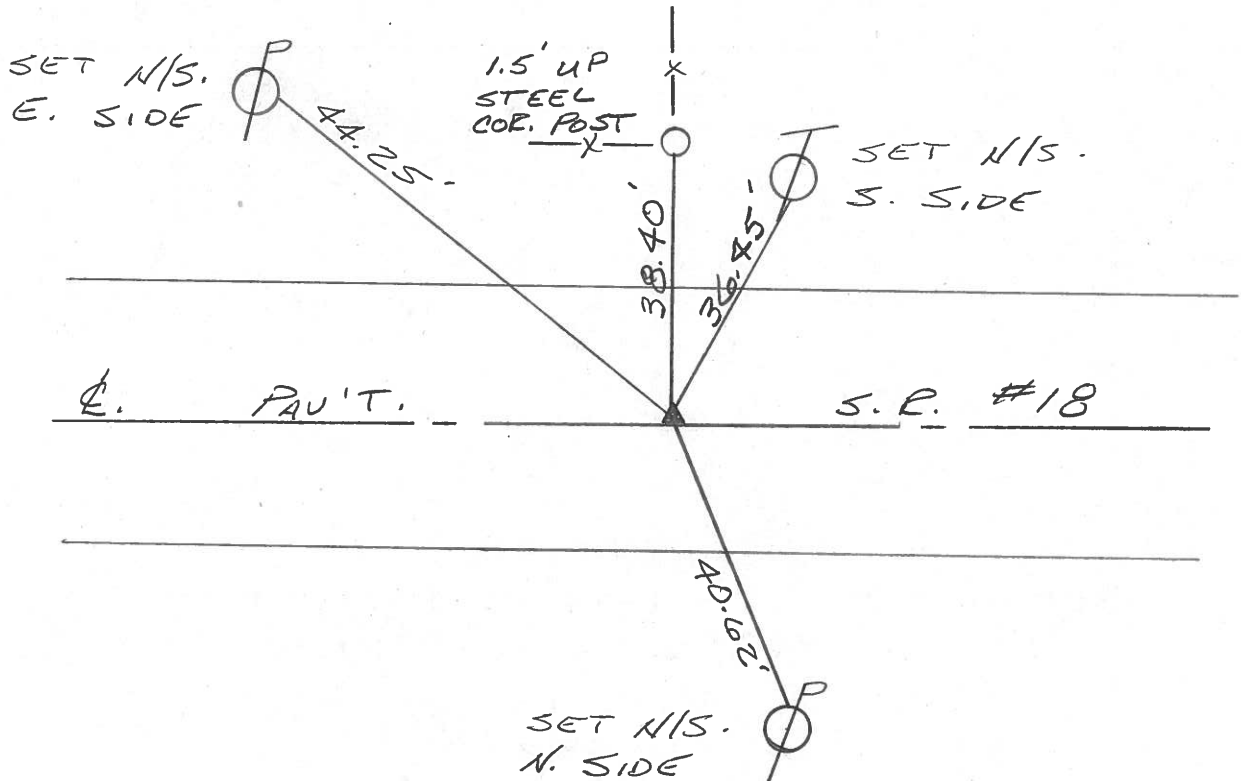
STA. 321+62.14

Fd. RR spike 4' down

set small spike at top

and to the surface

SET PK/WASHER  
8-27-1993  
RCC



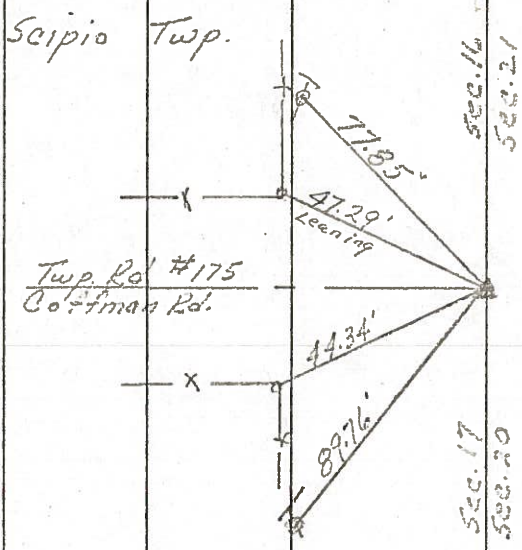
PERSONNEL	TITLE	PERSONNEL	TITLE	COUNTY	DATE	WEATHER	TEMP.
Ash				Seneca	11/10/72	overcast	47°
Cronin				S. R. #18 (S.H. 449)			
Ripolo				SEC. K			
Anderson							

DESCRIPTION Ties for Control Points - T. P. in East Corp. to Republic JOB NO. \_\_\_\_\_

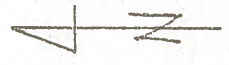
LEFT CENTER LINE RIGHT

(68)

16  
 $\Delta = 00^\circ 20' \text{ Rt.}$   
 P.I.  
 347+97.6'  
 Fd. R.R. spike  
 on surface

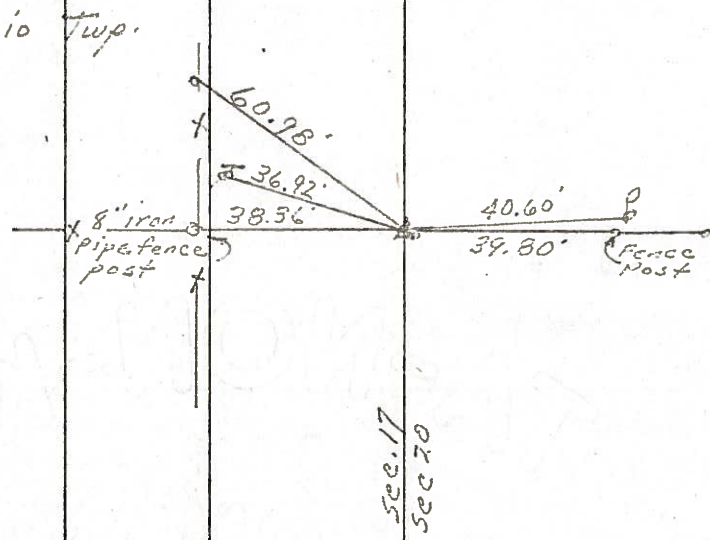


Tied 6/14/71



(67)

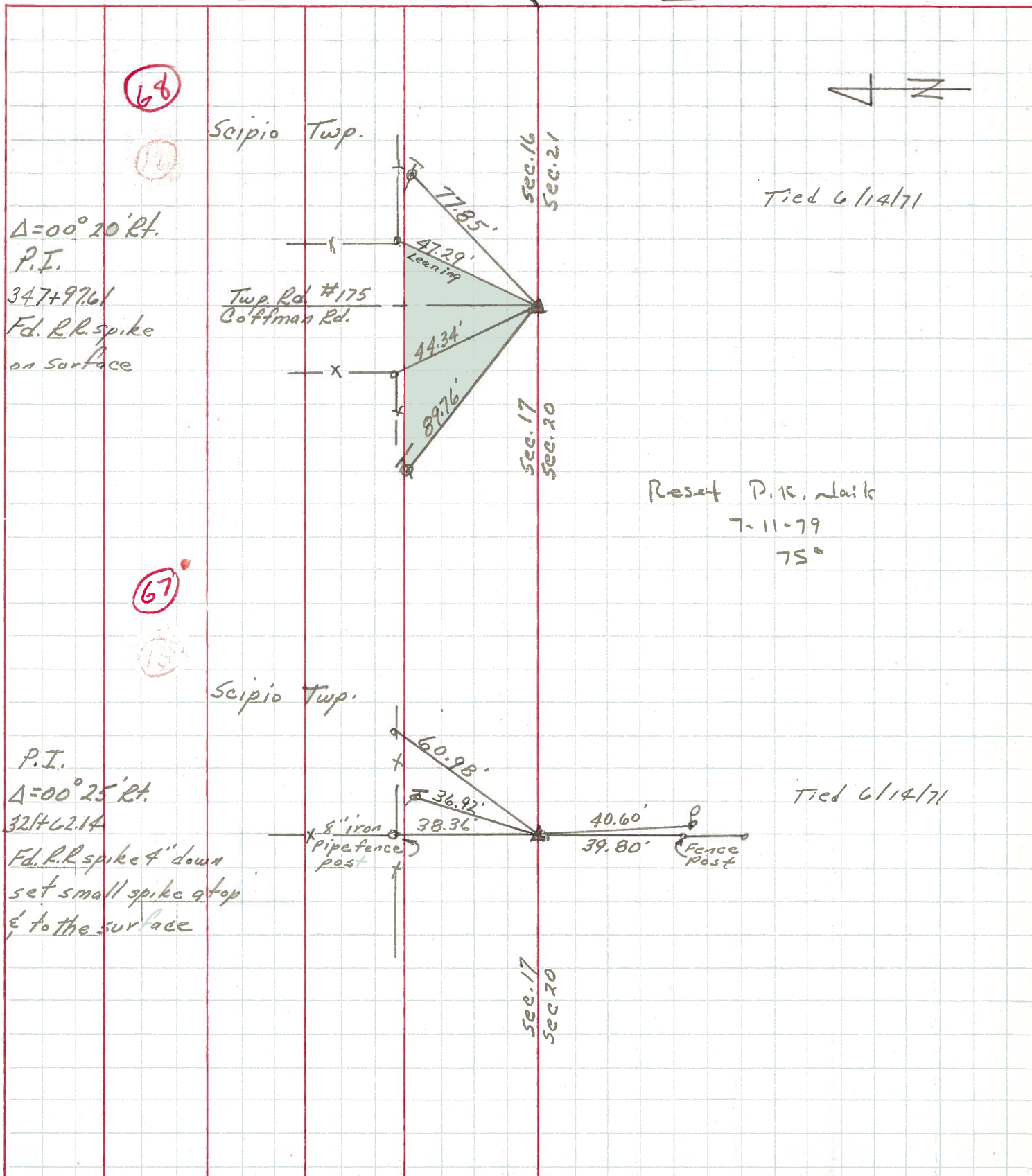
15  
 P.I.  
 $\Delta = 00^\circ 25' \text{ Rt.}$   
 321+62.14  
 Fd. R.R. spike 4" down  
 set small spike at top  
 & to the surface



Tied 6/14/71

PERSONNEL	TITLE	PERSONNEL	TITLE	COUNTY	DATE
Ash				Seneca	11/10/72
Cronin				S. R. #18 (S.H. 449)	WEATHER overcast
Ripple				SEC. K	TEMP. 47°
Anderson					

DESCRIPTION Ties for Control Points - Tiffin East Corp. to Republic JOB NO. \_\_\_\_\_

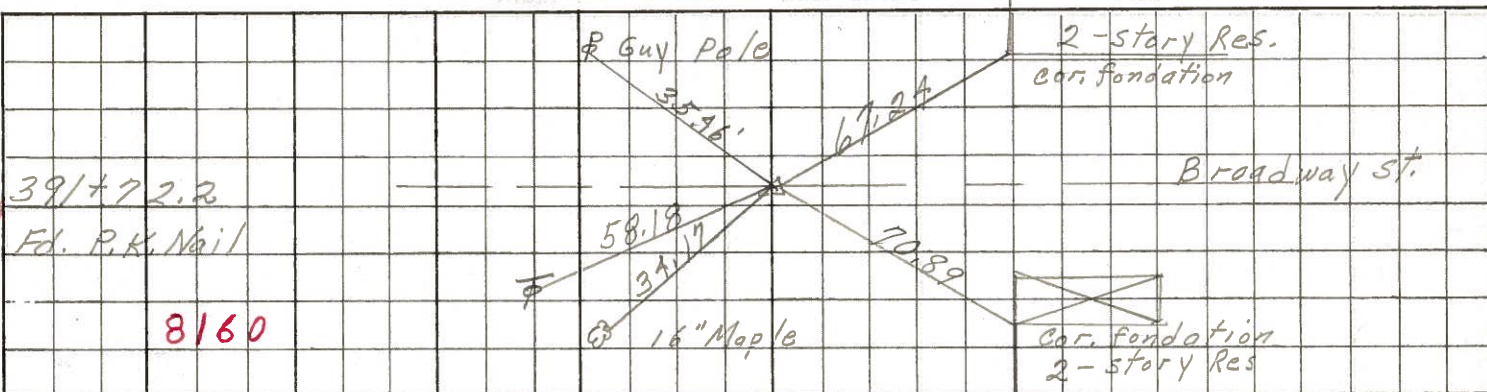




PERSONNEL TITLE PERSONNEL TITLE COUNTY Seneca DATE 10-31-68  
Schneider \_\_\_\_\_  
Barbour \_\_\_\_\_ S. R. 18 WEATHER Fair  
Redding \_\_\_\_\_  
Potts ✓ \_\_\_\_\_ SEC. Tiffin to Republic TEMP. 50°

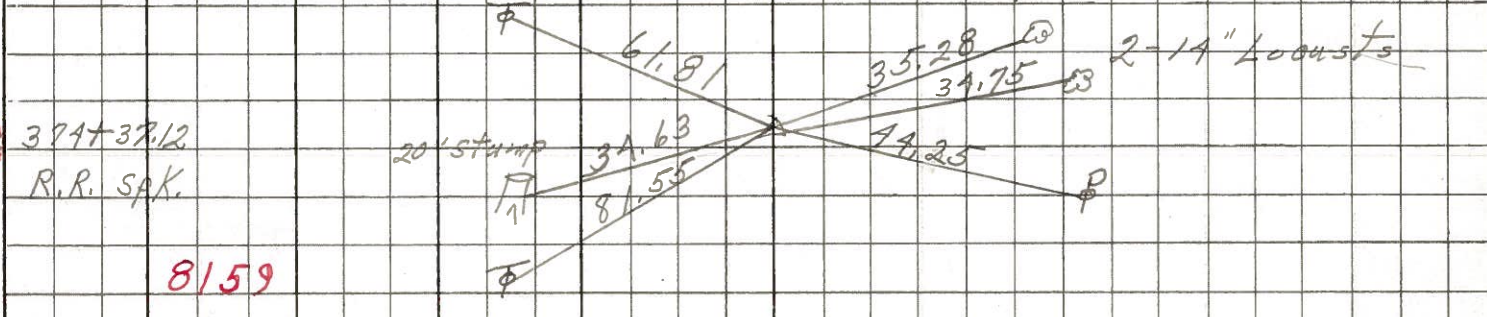
DESCRIPTION Ties for Control Points JOB NO. \_\_\_\_\_

70



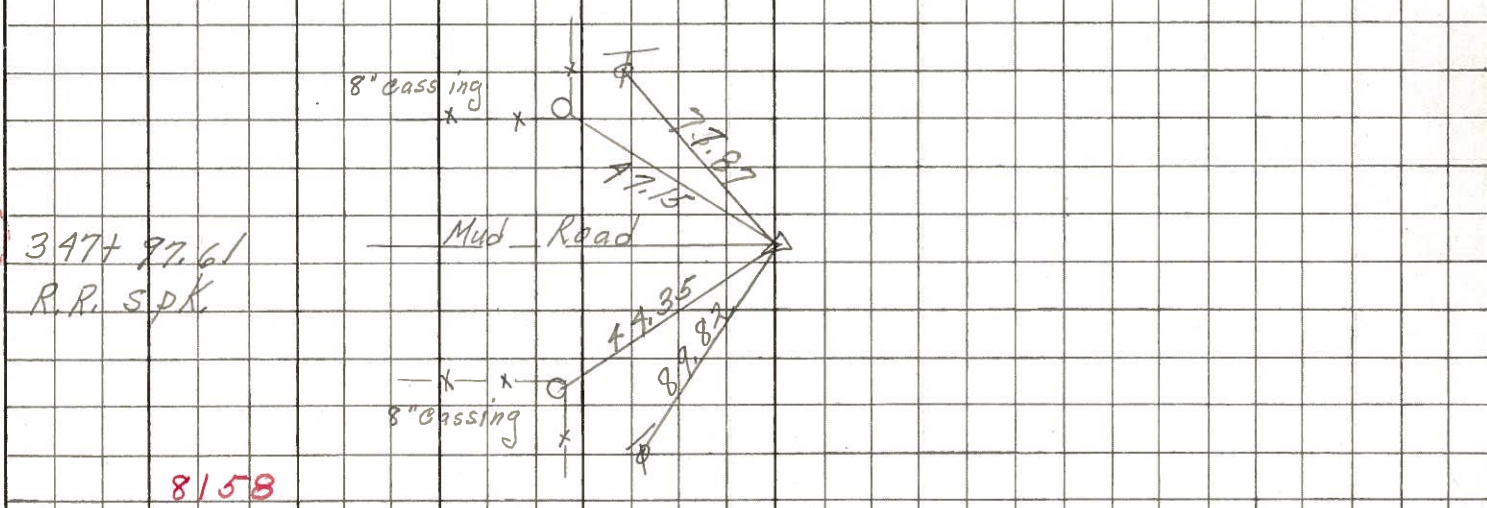
8160

69



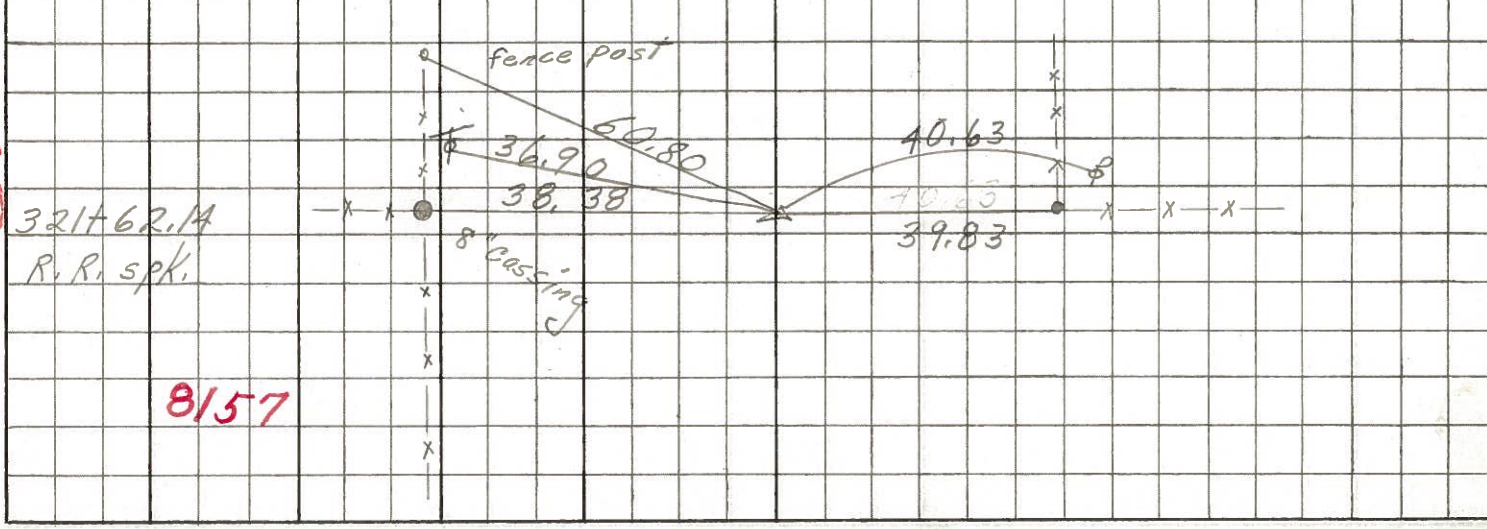
8159

68



8158

67



8157



PERSONNEL TITLE PERSONNEL TITLE

COUNTY Seneca DATE 12-23-65

S. R. #18 WEATHER

SEC. K TEMP.

DESCRIPTION Tiffin - Republic JOB NO.

LEFT CENTER LINE RIGHT

(67)

Sta. 321+62.14  
Found R.R. spk.

36.88 N.N.E. T. Pole  
38.35 N. 8" iron Pipe F. Pos  
40.62 S. P. Pole  
39.79 S. Cor Post  
60.76 N.E. Fence Post

~~8157~~

~~8150~~

8157

(68)

Sta. 347+97.61  
Found R.R. spk.

77.88 N.E. T. Pole  
47.0<sup>15</sup> N. 8" iron post. Cor. Post  
44.3<sup>35</sup> N.W. 8" " " "  
89.7<sup>82</sup> N.W. T. Pole

~~8158~~

8159

8158

(69)

Sta. 374+37.12  
Found R.R. spk.

34.63 N.W. bottle cap in 20.5' um  
34.75 S. " " in 14' locus  
44.25 SW P. Pole  
89.55 N.W.W. T. Pole  
35.28 S.E. 7 1/2" Locust  
61.81 N.E.

~~8157~~

8158

8159

(70)

Sta. 391+72.2  
Found P.K. Nail  
2" below surface  
Broadway St.

67.24 S.E. to N.W. Cor. Foundation  
20.98  
41.04 S.W. " "  
45.59 S.E. 24" Maple  
52.55 S.E.E. 16" Maple  
35.46 N.E. Guy Pole  
58.18 N.W. T. Pole  
34.17 N.W. 16" Maple

~~8159~~

8159



PERSONNEL TITLE PERSONNEL TITLE PERSONNEL TITLE PERSONNEL TITLE  
 MORRISON EA, FC COUNTY Sonoma DATE 3/15/49  
 HOLCOMBE EA, FC S. R. WEATHER windy  
 SWORDEN EA, I-D SEC. TEMP. +28°  
 KRABILL EA, FC  
 DESCRIPTION Ref. Ties Last 3 MI. S.R. #18 JOB NO.

