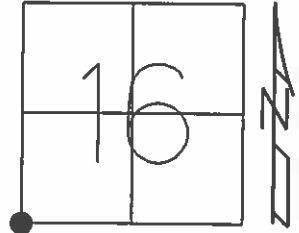


O.D.O.T. DISTRICT 2 SURVEY OFFICE (USE ONLY)

PERSONNEL _____ REFERENCE NO. 68 SHEET 10 OF 17
 NOTES RHOADES DATE 7-8-15 ROUTE SR 18
 H.C. O'DONNELL WEATHER SUNNY COUNTY SENECA
 R.C. HOMAN TEMP. 61°F TOWNSHIP SCPIO
 SECTION 16
 T 2 N R 16 E

TYPE MONUMENT RR. SPIKE
~~ON SURFACE~~ - BELOW 4"
 LEFT - CL PAV'T - ~~RIGHT~~ 1.5'
12' TO LT EDGE PAVEMENT
 S.L.M. 1162+54.53



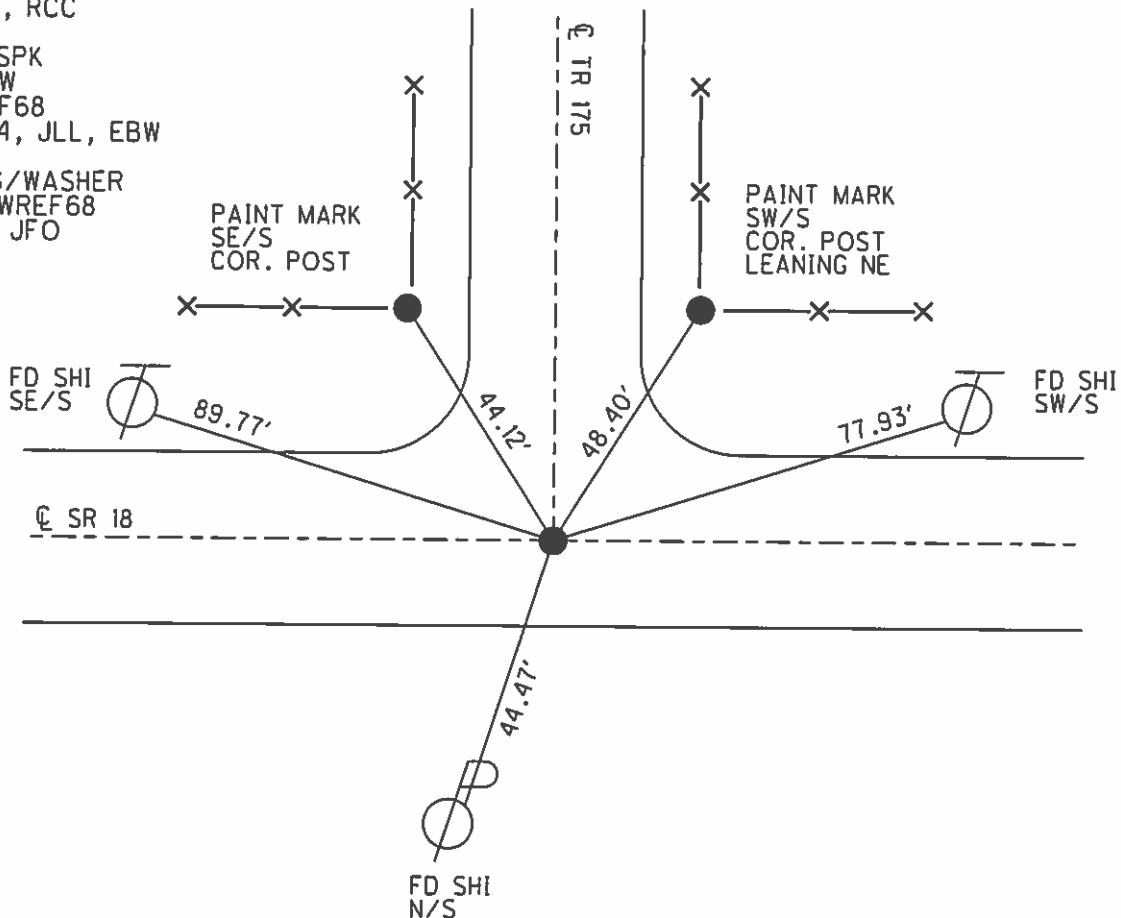
Grid: Northing: 531564.2784 Easting: 1821195.1738

RECORD:
 P.I. Δ=0°20' RT
 STA 347+97.61
 FD RR.SPIKE
 @ SURFACE
 6-14-1971

SET PK/WASHER
 8-27-93, RCC

FD RR. SPK
 3" BELOW
 GPS, REF68
 05-07-14, JLL, EBW

SET MAG/WASHER
 GPS, NEWREF68
 7-14-16, JFO



O.D.O.T. DISTRICT 2 SURVEY OFFICE (USE ONLY)

PERSONNEL _____ REFERENCE NO. 68 SHEET 4 OF 5
 NOTES HOMAN DATE 07-16-08 ROUTE SR#18
 H.C. HOMAN WEATHER SUNNY COUNTY SENECA
 R.C. ROUSOS TEMP. +80° TOWNSHIP SCIPIO
 _____ SECTION 16,17,20,21
 _____ T 2 N R 16 E

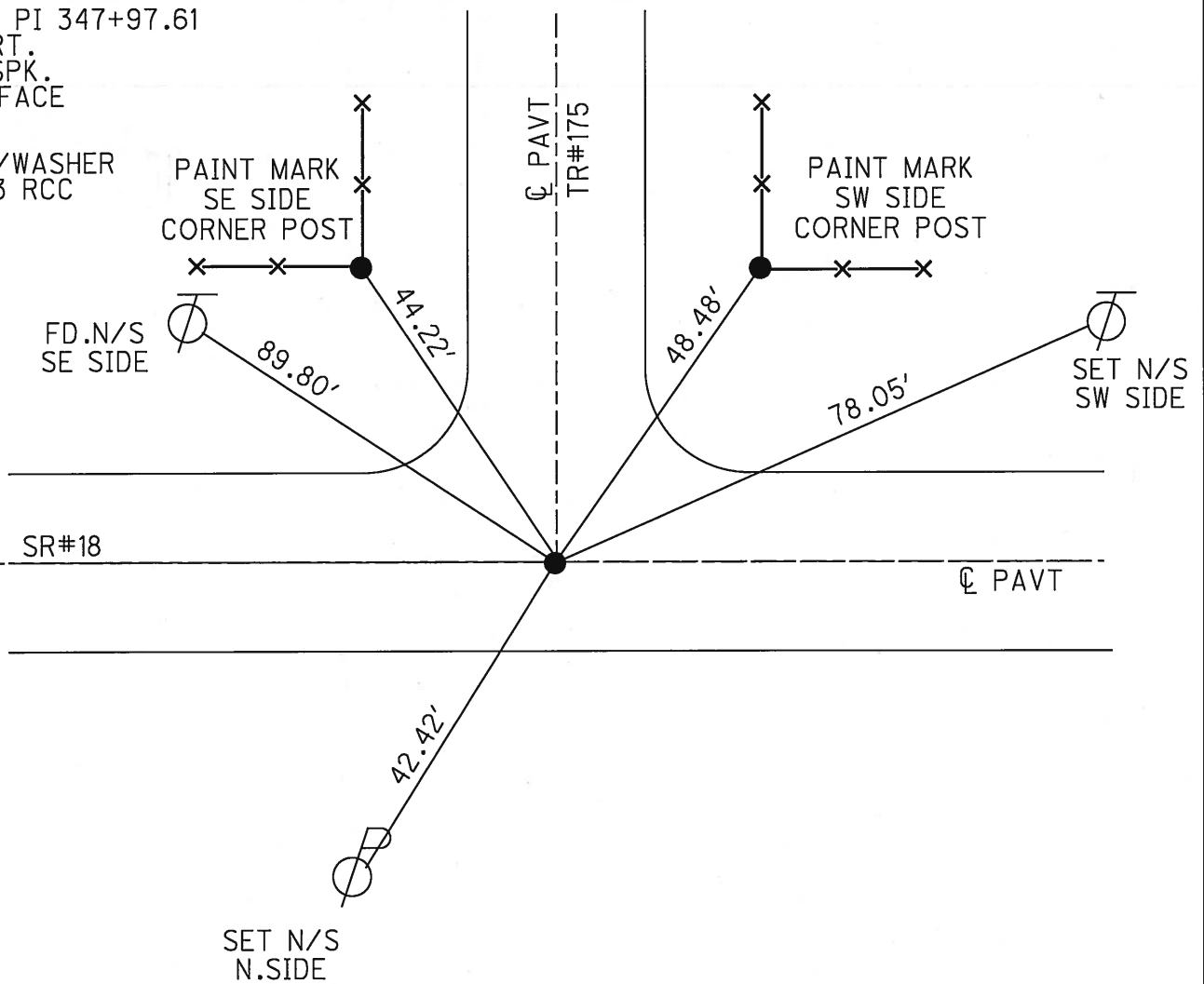
TYPE MONUMENT FD RR.SPK.
~~ON SURFACE~~ - BELOW 4" BELOW
 LEFT - ~~C PAV'T~~ - RIGHT 1' LEFT
12' TO RT. EDGE PAVEMENT
 S.L.M. 1163+68.04 REF 68
 Grid: Northing: 531564.45 Easting: 1821195.15

17	16
20	21



RECORD PI 347+97.61
 00°20'RT.
 FD.RR.SPK.
 ON SURFACE
 6-14-71

SET PK/WASHER
 8-27-93 RCC



O.D.O.T. DISTRICT 2 SURVEY OFFICE

PERSONNEL

REFERENCE NO. 68

SHEET 20 OF 24

NOTES CHENEY

H.C. RIPPLE

R.C. BARBOUR

GEYMAN

DATE 7-2-1993

WEATHER Cloudy

TEMP. 80°

ROUTE #18

COUNTY SENECA

TOWNSHIP SCIPIO

SECTION 16, 17, 20 & 21

T2N R16E

TYPE MONUMENT R.R. SPIKE

~~ON~~ SURFACE - BELOW 2"

LEFT - CL PAV'T. - RIGHT 1'

12' TO RT. EDGE PAVEMENT

S.L.M. 1162+61

17	16
20	21



RECORD: 6-14-1971

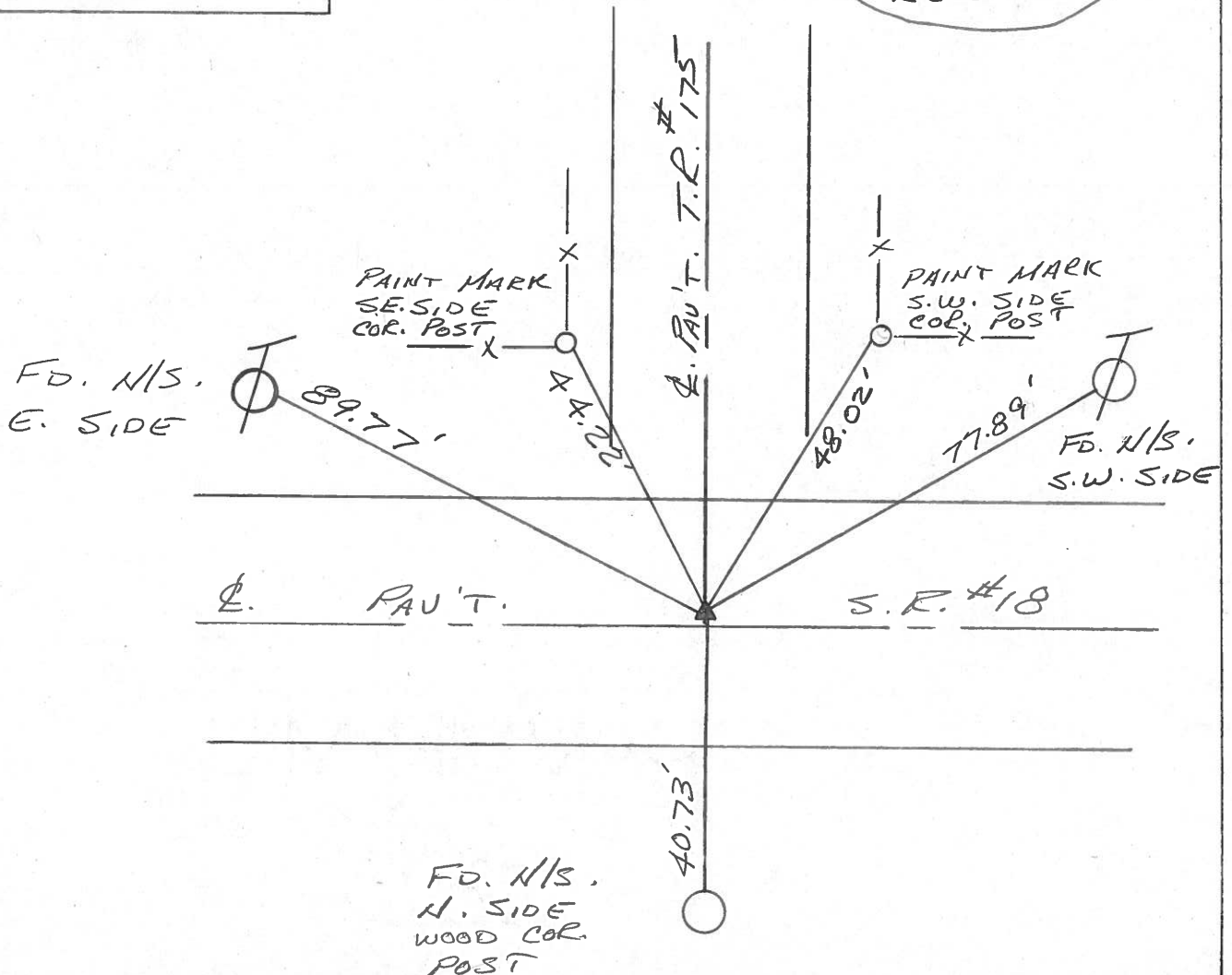
P.I. STA. 347+97.61

$\Delta = 00^{\circ} 20'$ RT.

FD. R.R. SPIKE ON

SURFACE

SET PK/WASHER
 8-27-1993
 REC



PERSONNEL TITLE PERSONNEL TITLE

Ash
Cronin
Ripple
Anderson

COUNTY Seneca

DATE 11/10/72

S. R. #18 (S.H. 449)

WEATHER overcast

SEC. K

TEMP. 47°

DESCRIPTION Ties for Control Points - T. Flin East Corp. to Republic

JOB NO.

LEFT

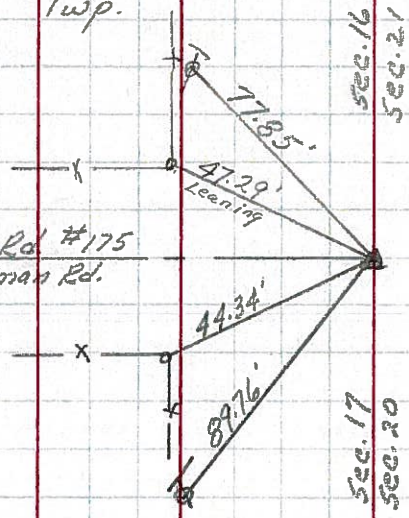
CENTER LINE

RIGHT

(68)
12
 $\Delta = 00^\circ 20' \text{ Rt.}$
P.I.
347+97.61
Fd. R.R. spike
on surface

Scipio Twp.

Twp. Rd. #175
Coffman Rd.



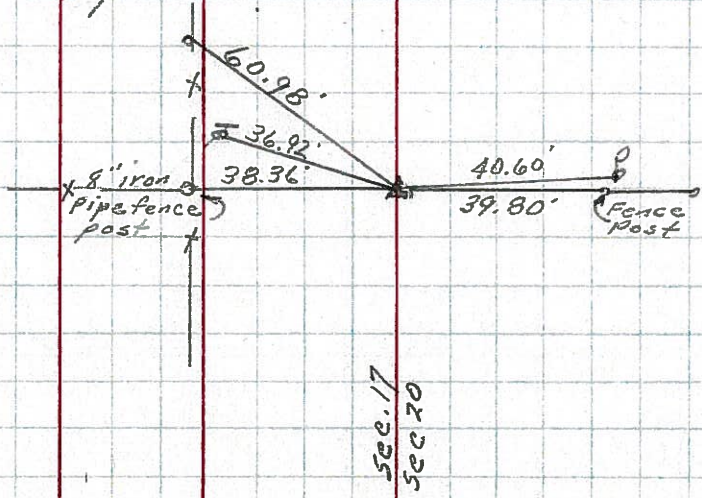
Tied 6/14/71

Reset P.I. Mark
7-11-79
75°

(67)
13
P.I.
 $\Delta = 00^\circ 25' \text{ Rt.}$
321+62.14
Fd. R.R. spike 4" down
set small spike at top
& to the surface

Scipio Twp.

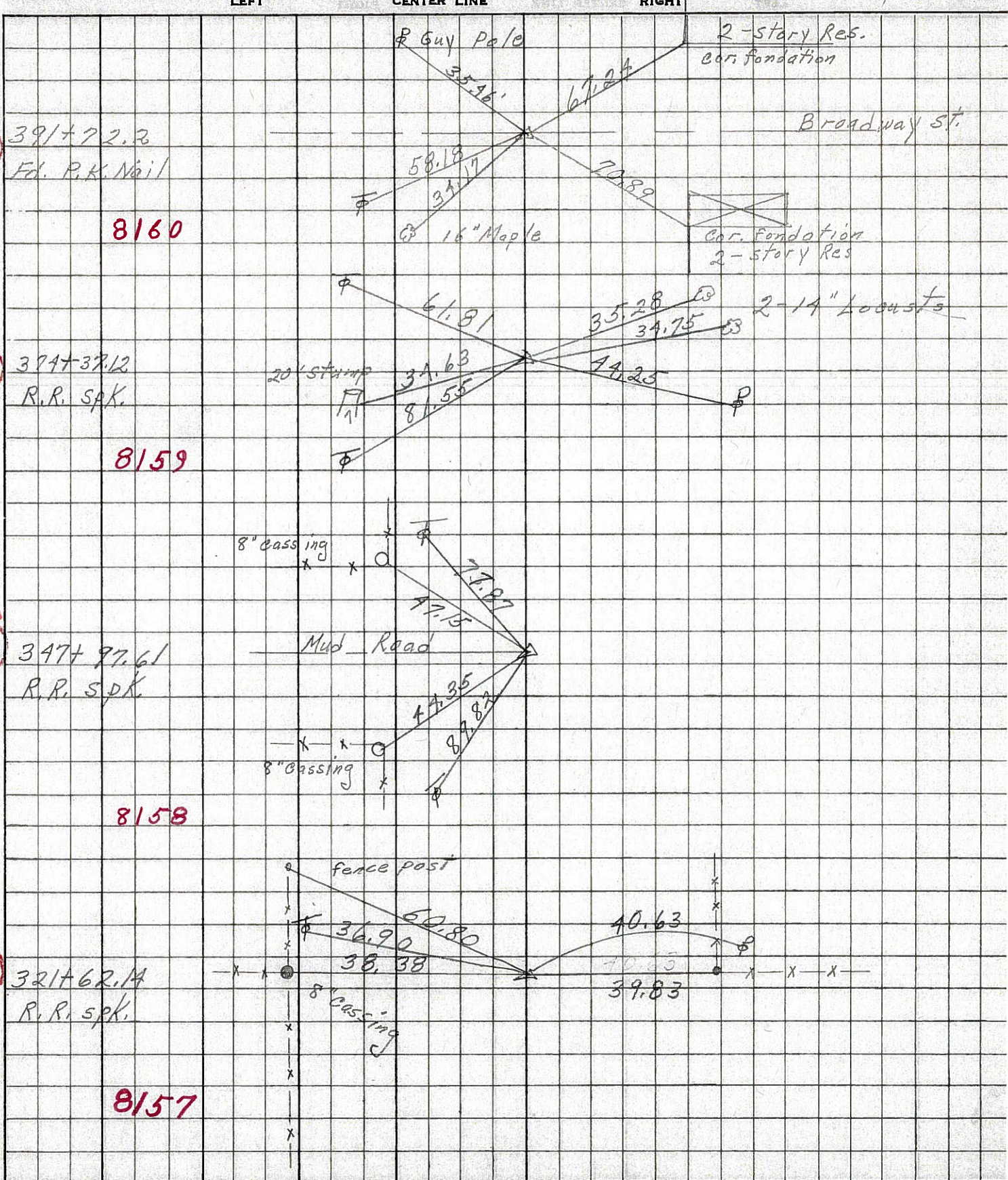
8" iron
pipe fence
post



Tied 6/14/71

PERSONNEL	TITLE	PERSONNEL	TITLE	COUNTY	<u>Seneca</u>	DATE	<u>10-31-68</u>
<u>Schneider</u>				S. R.	<u>18</u>	WEATHER	<u>Fair</u>
<u>Barbour</u>				SEC.	<u>Tiffin to Republic</u>	TEMP.	<u>50°</u>
<u>Redding</u>							
<u>Potts</u> ✓							

DESCRIPTION Ties for Control Points JOB NO. 1



8160

8159

8158

8157

70

69

68

67

PERSONNEL TITLE PERSONNEL TITLE

COUNTY Seneca DATE 12-23-68

S. R. #18 WEATHER

SEC K TEMP

DESCRIPTION Tiffin - Republic JOB NO.

LEFT CENTER LINE RIGHT

(67)

Sta. 321+62.14
Found R.R. spk

36.88 N.N.E. T. Pole
38.35 N. 8" iron Pipe F. Po.
40.62 S. P. Pole
39.79 S. Cor. Post
60.76 N.E. Fence Post

~~8157~~

~~8150~~
8157

(68)

Sta. 347+97.61
Found R.R. spk

77.88 N.E. T. Pole
47.0¹⁵₀ N.E. 8" iron post. Cor. Po.
44.3³⁵₂ N.W. 8" " " "
89.78₈₂ N.W. T. Pole

~~8158~~

~~8159~~
8158

(69)

Sta. 374+37.12
Found R.R. spk

34.62 N.W. bottle cap in 20" stub
34.75 S. " " in 14" locu
44.25 SW P. Pole
81.55 N.W.W. T. Pole
35.28 S.E. 71" Locust
61.81 N.E.

~~8157~~

~~8158~~
8159

(70)

Sta. 391+72.2
Found R.R. Nail
2" below surface
Broadway St.

69.24 S.E. to N.W. Cor. Foundati
70.98_{71.04} S.W. " "
45.59 S.E. 24" Maple
52.55 S.E.E. 16" Maple
35.46 N.E. Guy Pole
58.18 N.W. T. Pole
34.17 N.W. 16" Maple

~~8159~~

8159

PERSONNEL	TITLE	PERSONNEL	TITLE	PERSONNEL	TITLE	PERSONNEL	TITLE
MORRISON	EA, I-C						
HOLCOMBE	EA, I-C						
SWORDEN	EA, I-D						
KRABILL	EA, I-C						

COUNTY Seneca DATE 3/15/49
 S. R. WEATHER windy
 SEC. TEMP. +28°
 DESCRIPTION Ref Ties Last 3 mi. S.R. #18 JOB NO. _____

