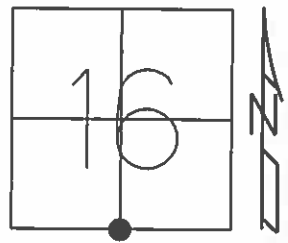


O.D.O.T. DISTRICT 2 SURVEY OFFICE (USE ONLY)

PERSONNEL \_\_\_\_\_ REFERENCE NO. 69 SHEET 11 OF 17  
 NOTES RHOADES DATE 7-8-15 ROUTE SR 18  
 H.C. O'DONNELL WEATHER SUNNY COUNTY SENECA  
 R.C. HOMAN TEMP. 61°F TOWNSHIP SCIPIO  
 \_\_\_\_\_ SECTION 16  
 \_\_\_\_\_ T 2 N R 16 E

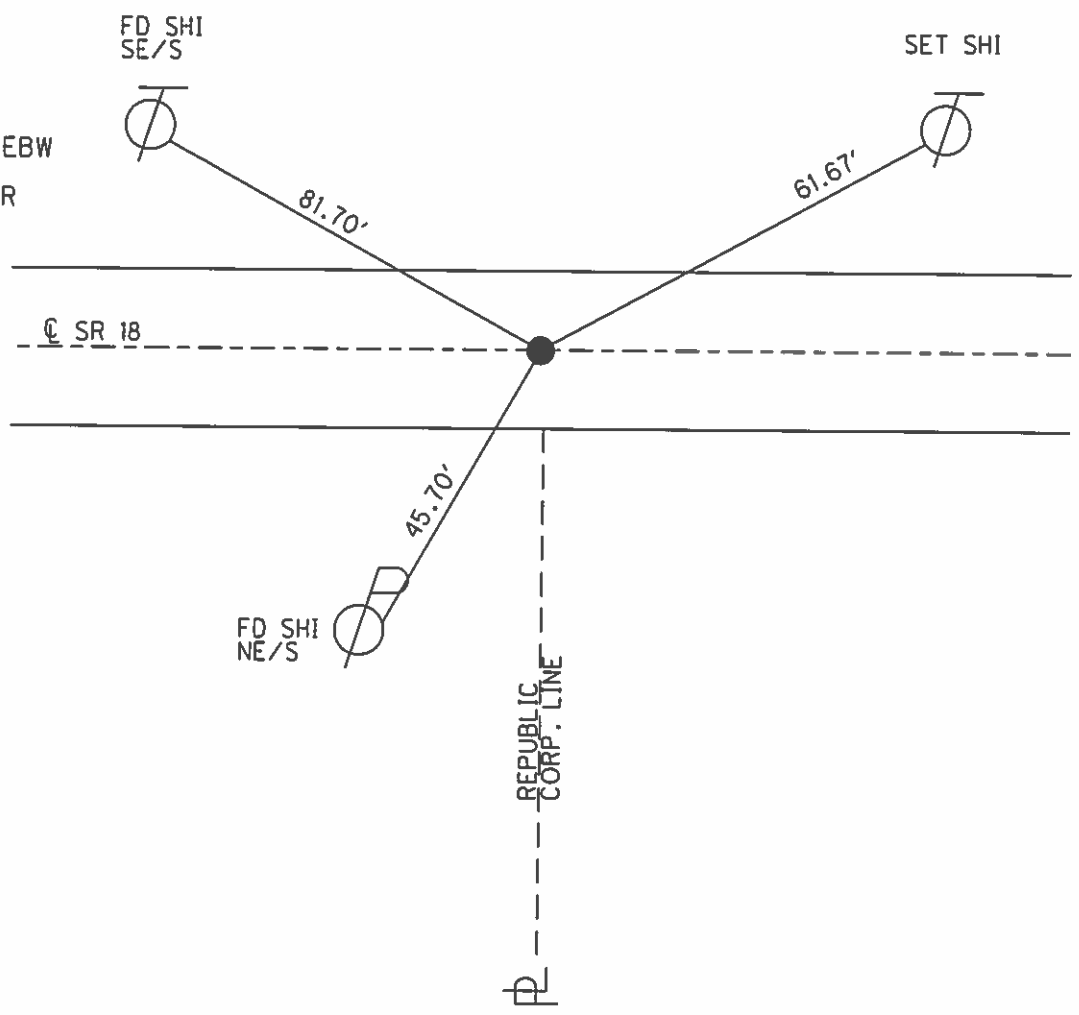
TYPE MONUMENT PK/WASHER  
~~ON SURFACE~~ - BELOW 1"  
~~LEFT~~ - ☉ PAV'T - RIGHT 1.0'  
10' TO RT EDGE PAVEMENT  
 S.L.M. 1188+93.17



Grid: Northing: 531580.8755 Easting: 1823833.8516

RECORD:  
 P.I. Δ=00°30' LT  
 STA 374+37.12  
 FD RR. SPIKE 4" DOWN  
 SET SM. RR. SPIKE ATOP  
 6-14-71

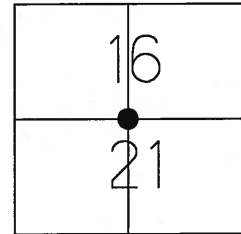
SET PK/WASHER  
 8-27-93, RCC  
 FD PK/WASHER  
 GPS, REF69  
 05-07-14, JLL, EBW  
 SET MAG/WASHER  
 GPS, NEWREF69  
 7-14-16, JFO



O.D.O.T. DISTRICT 2 SURVEY OFFICE (USE ONLY)

PERSONNEL	REFERENCE NO. <u>69</u>	SHEET <u>5</u> OF <u>5</u>
NOTES <u>HOMAN</u>	DATE <u>07-16-08</u>	ROUTE <u>SR#18</u>
H.C. <u>HOMAN</u>	WEATHER <u>SUNNY</u>	COUNTY <u>SENECA</u>
R.C. <u>ROUSOS</u>	TEMP. <u>+80°</u>	TOWNSHIP <u>SCIPIO</u>
		SECTION <u>16 &amp; 21</u>
		T <u>2</u> N R <u>16</u> E

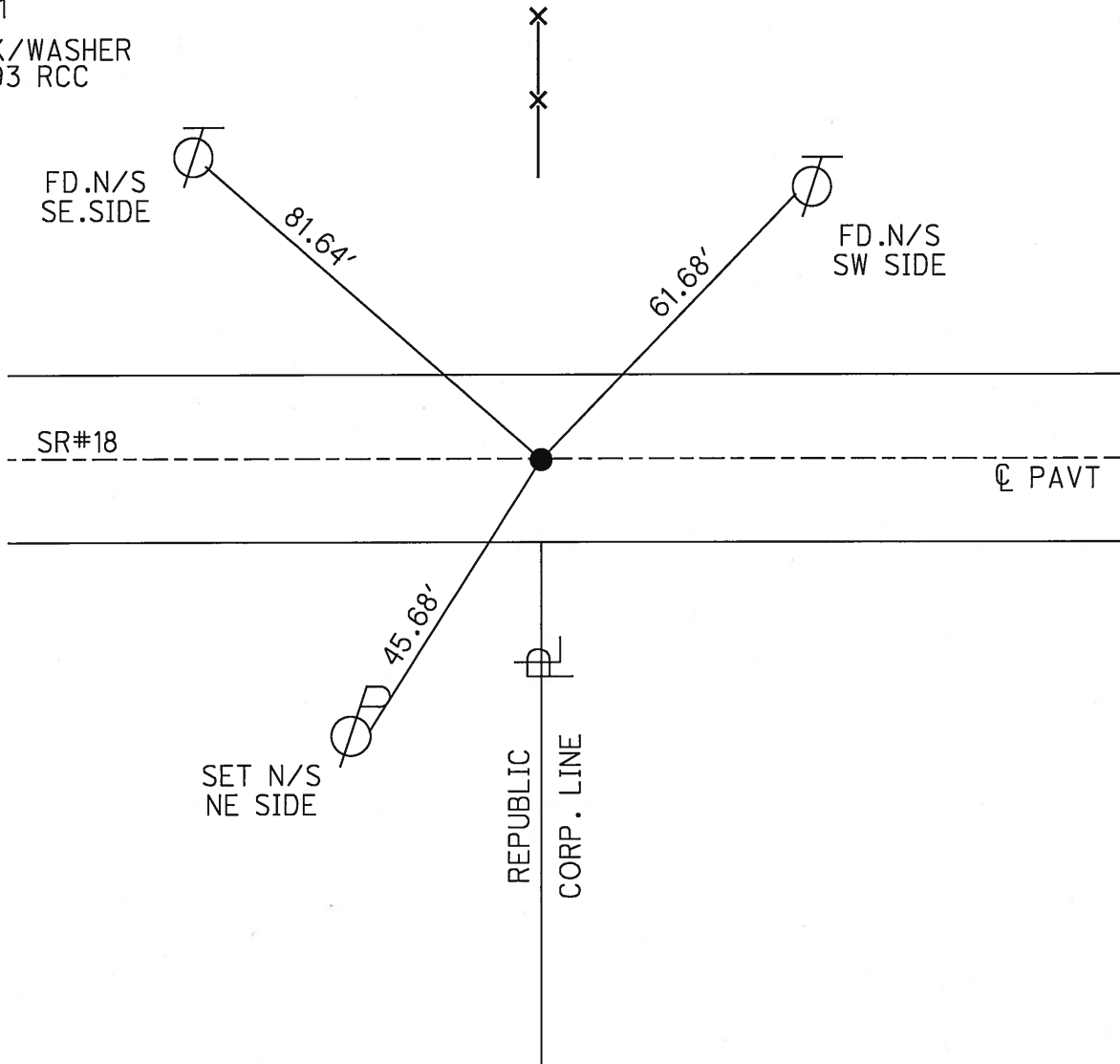
TYPE MONUMENT FD PK/WASHER  
 ON SURFACE - ~~BELOW~~ ON SURFACE  
~~LEFT = C PAV'T~~ - RIGHT 1.0' RT.  
10' TO RT. EDGE PAVEMENT  
 S.L.M. 1190+06.70 REF69



Grid: Northing: 531580.86 Easting: 1823833.76

RECORD PI 374+37.12  
 00°30'LT.  
 FD.RR.SP.K.4" DOWN  
 SET SM.RR.SP.K ATOP  
 6-14-71

SET PK/WASHER  
 8-27-93 RCC



O.D.O.T. DISTRICT 2 SURVEY OFFICE

PERSONNEL

REFERENCE NO. 69

SHEET 21 OF 24

NOTES CHENEY

H.C. RIPPLE

DATE 7-2-1993

ROUTE #18

R.C. BARBOUR

WEATHER CLOUDY

COUNTY SENECA

GEYMAN

TEMP. 85°

TOWNSHIP SCRIPHO

SECTION 16 E 21

TEN R 16 E

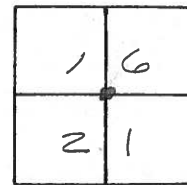
TYPE MONUMENT PK/WASHER

ON SURFACE - ~~BELOW~~ ON

~~LEFT~~ - CL PAV'T. - RIGHT 1'

10' TO Rt EDGE PAVEMENT

S.L.M. 1189+07



RECORD: 6-14-1971

P.I. STA. 374+32.12  
+37.12

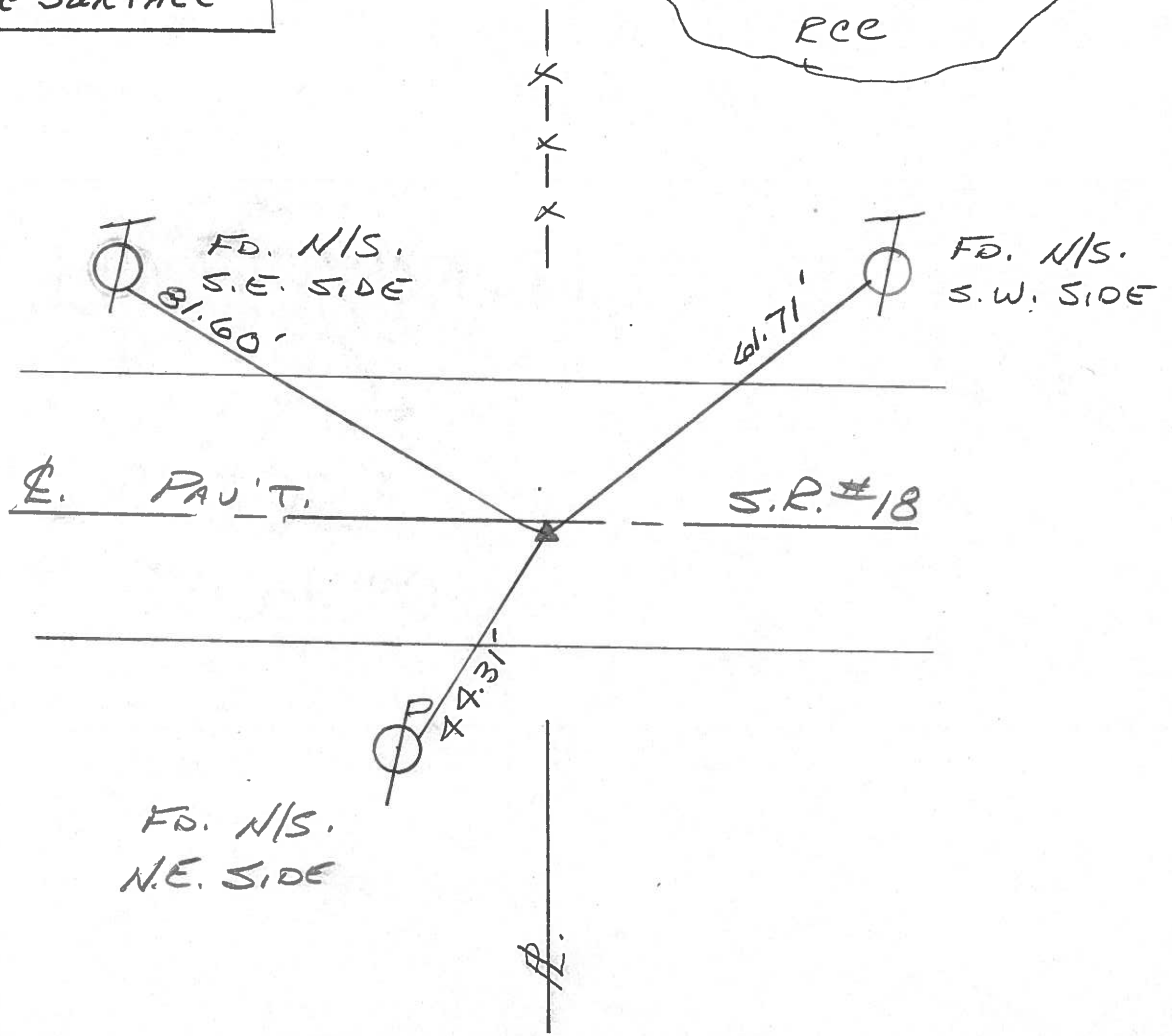
$\Delta = 00^\circ 30' \text{ LT.}$

FD. R.R. SPK. 4" down

Set small spike

AND TO THE SURFACE

SET PR/WASHER  
8-27-1993  
PCC



PERSONNEL	TITLE	PERSONNEL	TITLE
Ash			
Cronin			
Ripple			
Alderson			

COUNTY Seneca DATE 11/13/72  
 S. R. #18 (S.H. 4.49) WEATHER overcast  
 SEC. 'K' TEMP. 43°

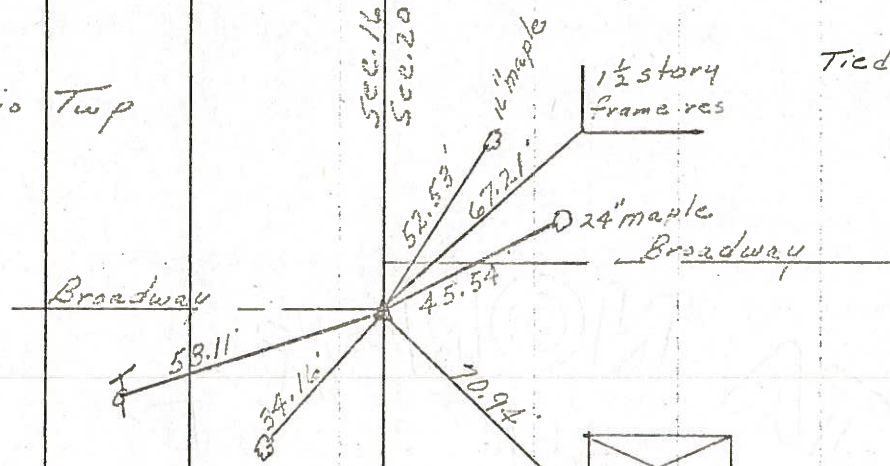
DESCRIPTION Ties for Control Points - Tiffin East Corp. to Republic JOB NO. \_\_\_\_\_

LEFT CENTER LINE RIGHT

70

$\Delta = 00^\circ 47' \text{ Rt. (Turned)}$   
 P.I  
 391472.20

Scipio Twp

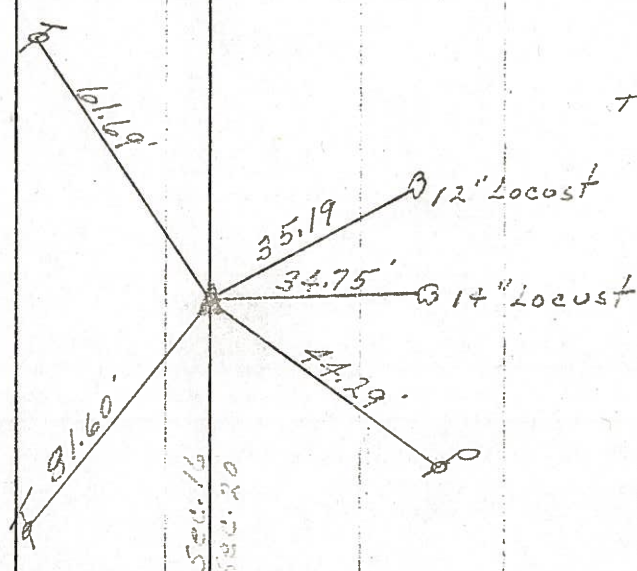


Tied 6/15/71

69

$\Delta = 00^\circ 30' \text{ Lt.}$   
 P.I  
 374+37.12  
 Fd. R.R spike 4'  
 below surface. Set  
 small spike atop  
 1/2 to the surface

Scipio Twp.



Tied 6/14/71

PERSONNEL TITLE PERSONNEL TITLE

Ash  
Cronin  
Ripple  
Anderson

COUNTY Seneca

DATE 11/13/72

S. R. #18 (S.H. 449)

WEATHER overcast

SEC. 'K'

TEMP. 43°

DESCRIPTION Ties for Control Points - Tiffin East Corp. to Republic

JOB NO.

LEFT

CENTER LINE

RIGHT

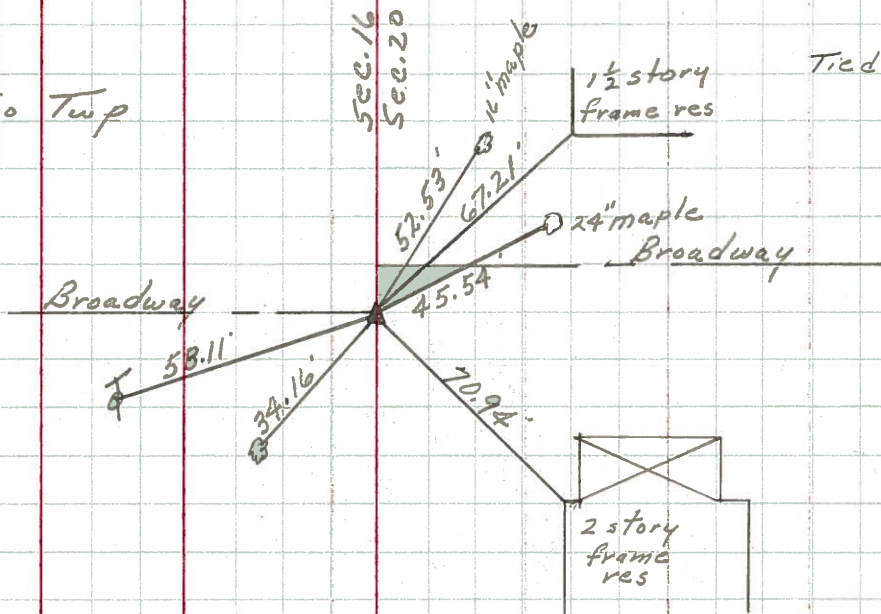


(70)

Scipio Twp

Tied 6/15/71

A=00°47' Rt. (Turned)  
P.I  
391+72.20



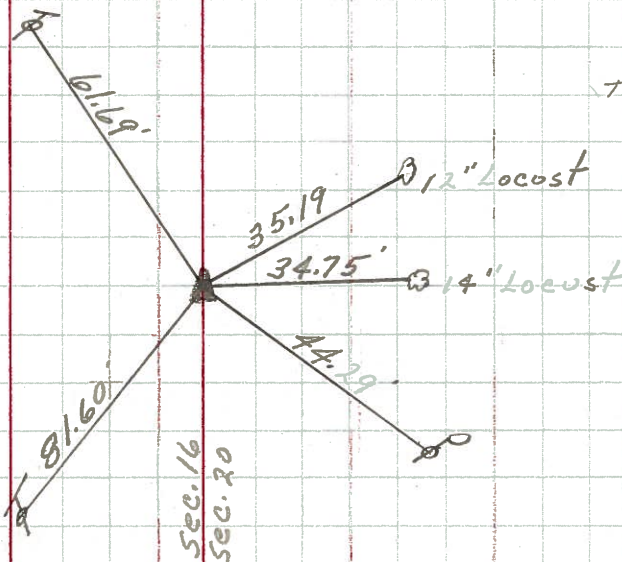
Re-set P.K. nails  
7-11-79  
75°

(69)

Scipio Twp.

Tied 6/14/71

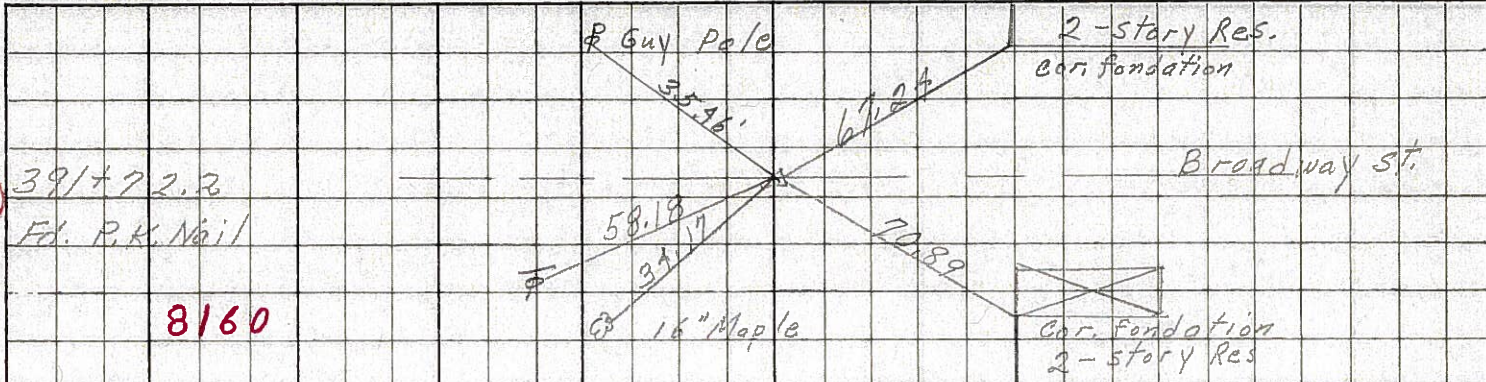
A=00°30' Lt.  
P.I  
374+37.12  
Fd. R.R. spike 4'  
below surface. Set  
small spike atop  
& to the surface



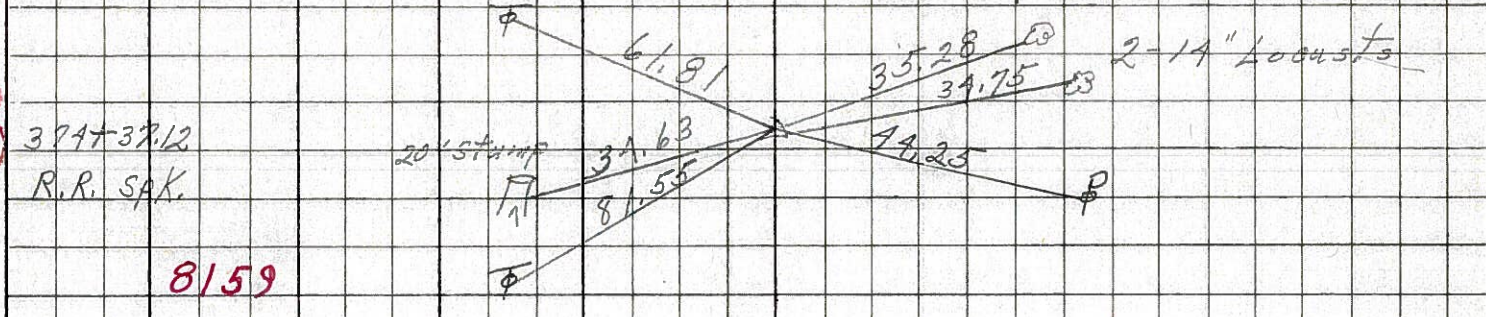
PERSONNEL	TITLE	PERSONNEL	TITLE	COUNTY	Seneca	DATE	10-31-68
Schneider				S. R.	18	WEATHER	Fair
Barbour				SEC.	Tiffin to Republic	TEMP.	50°
Redding							
Potts							

DESCRIPTION Ties for Control Points JOB NO. 6

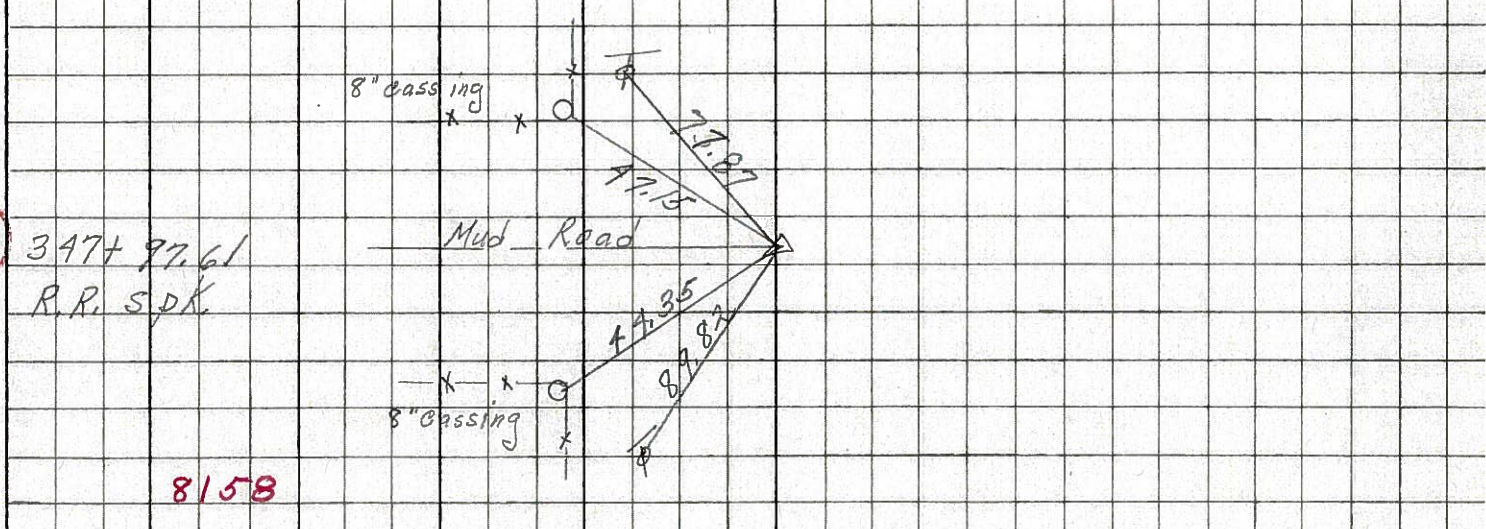
70



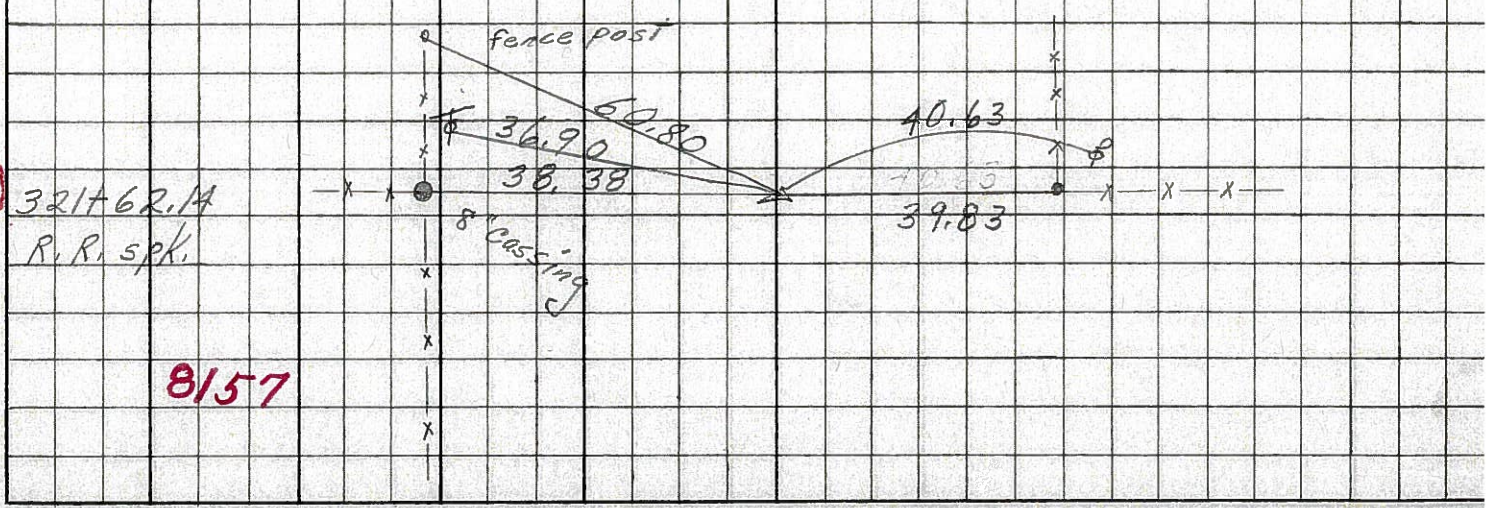
69



68



67



PERSONNEL \_\_\_\_\_ TITLE \_\_\_\_\_ PERSONNEL \_\_\_\_\_ TITLE \_\_\_\_\_

COUNTY Seneca DATE 12-23-65

S. R. #18 WEATHER \_\_\_\_\_

SEC. K TEMP \_\_\_\_\_

DESCRIPTION Tiffin - Republic JOB NO. \_\_\_\_\_

LEFT CENTER LINE RIGHT

(67)

Sta 321+62.14  
Found R.R. spk.

36.88 N.W. E. T. Pole  
38.35 N. 8" Iron Pipe Pipe  
40.62 S. P. Pole  
39.79 S. Cor. Post  
60.76 N.E. Fence Post

~~8150~~  
8157

(68)

Sta 347+97.61  
Found R.R. spk.

27.88 N.E. T. Pole  
47.00<sup>15</sup> N.E. 8" Iron post. Cor. Post  
44.32<sup>35</sup> N.W. 8" " " "  
89.78<sup>82</sup> N.W. T. Pole

~~8158~~  
8159  
8158

(69)

Sta 374+37.12  
Found R.R. spk.

34.63 N.W. bottle cap in 20" stud  
34.75 S. " " in 14" locust  
44.25 SW P. Pole  
81.55 N.W.W. T. Pole  
35.28 S.E. 7" Locust  
61.81 E N.E.

~~8157~~  
8158  
8159

(70)

Sta 391+72.2  
Found R.R. Nail  
2" below surface  
Broadway St.

67.24 S.E. to N.W. Cor. Foundation  
20.98<sup>71.54</sup> S.W. " "  
45.59 S.E. 24" Maple  
52.55 S.E.E. 16" Maple  
35.46 N.E. Guy Pole  
58.18 N.W. T. Pole  
34.17 N.W. 16" Maple

~~8159~~  
8159

PERSONNEL	TITLE	PERSONNEL	TITLE	PERSONNEL	TITLE	PERSONNEL	TITLE
MORRISON	EA, I-C						
HOLCOMBE	EA, I-C						
SWORDEN	EA, I-D						
KRABILL	EA, I-C						

COUNTY Seneca DATE 3/15/49

S. R. \_\_\_\_\_ WEATHER windy

SEC. \_\_\_\_\_ TEMP. +28°

DESCRIPTION Ref Ties Last 3 mi. S.R. #18 JOB NO. \_\_\_\_\_

