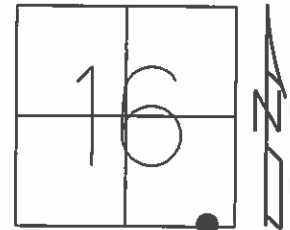


O.D.O.T. DISTRICT 2 SURVEY OFFICE (USE ONLY)

PERSONNEL _____ REFERENCE NO. 70 SHEET 13 OF 17
 NOTES RHOADES DATE 7-8-15 ROUTE SR 18
 H.C. O'DONNELL WEATHER SUNNY COUNTY SENECA
 R.C. HOMAN TEMP. 61°F TOWNSHIP SCIPIO
 _____ SECTION 16
 _____ T 2 N R 16 E

TYPE MONUMENT PK NAIL
~~ON SURFACE~~ - BELOW 3"
 LEFT - ☉ PAV'T - ~~RIGHT~~ 1'
11' TO LT EDGE PAVEMENT
 S.L.M. 1206+27.84

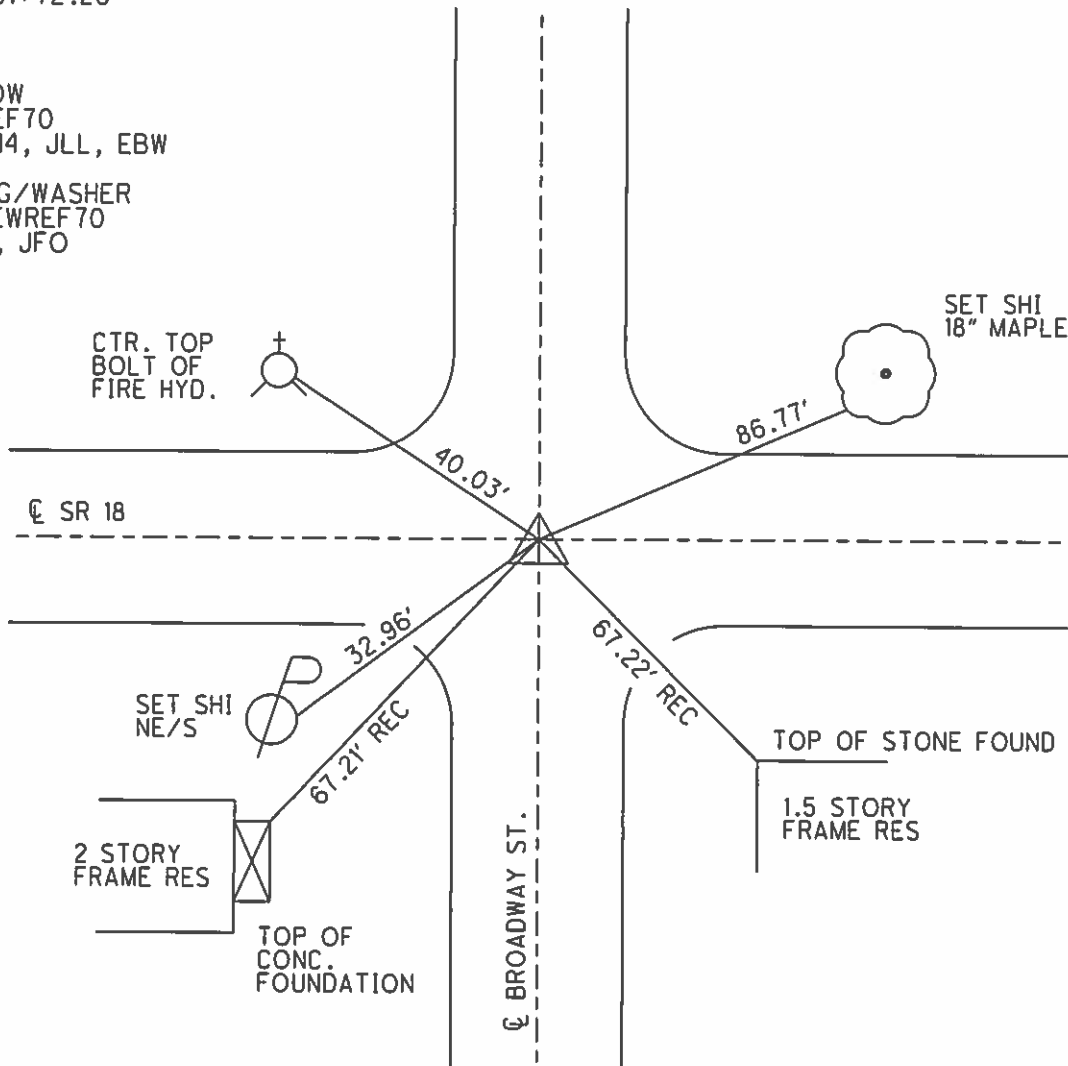


Grid: Northing: 531607.094 Easting: 1825568.2442

RECORD:
 P.I. Δ=00°47' RT. (OBS)
 STA. 391+72.20
 6-15-72

FD PK
 3" BELOW
 GPS, REF70
 05-07-14, JLL, EBW

SET MAG/WASHER
 GPS, NEWREF70
 7-14-16, JFO



O.D.O.T. DISTRICT 2 SURVEY OFFICE

PERSONNEL

REFERENCE NO. 70

SHEET 22 OF 24

NOTES CHENEY

H.C. RIPPLE

DATE 7-2-1993

ROUTE #18

R.C. BARBOUR

WEATHER CLOUDY

COUNTY SENECA

GEYMAN

TEMP. 85°

TOWNSHIP Scipio

SECTION 16 & 21

T2 N R 16 E

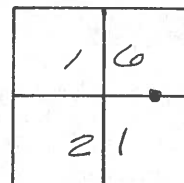
TYPE MONUMENT PK/WASHER

ON SURFACE - ~~BELOW~~ ON

~~LEFT - & PAV'T.~~ RIGHT ON

11' TO LT. EDGE PAVEMENT

S.L.M. 1206+44

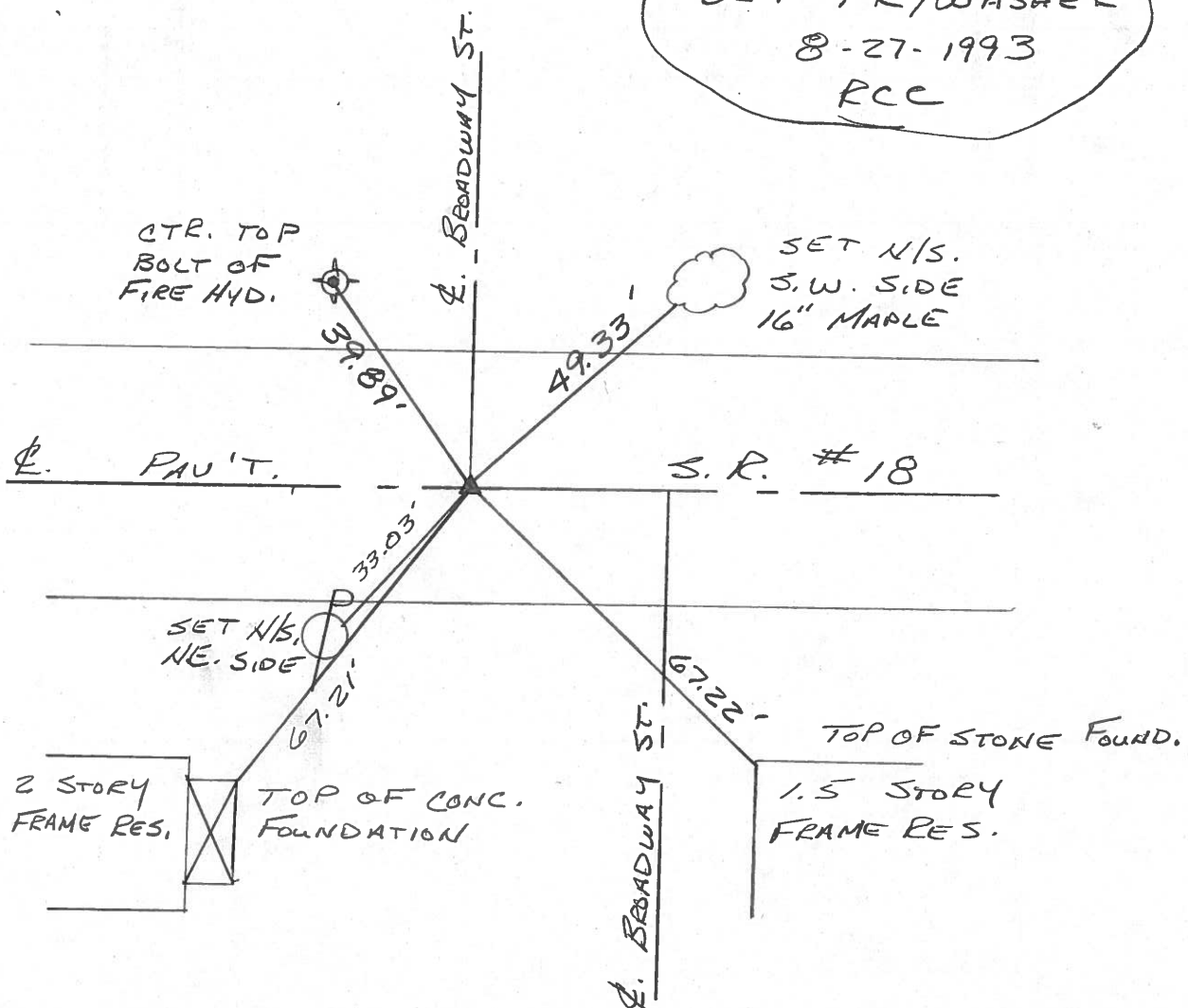


RECORD: 6-15-1971

P.I. STA. 391+72.20

$\Delta = 00^\circ 47' \text{ RT. (OBS.)}$

SET PK/WASHER
8-27-1993
RCC



PERSONNEL	TITLE	PERSONNEL	TITLE
Ash			
Crowin			
Ripole			
Anderson			

COUNTY Seneca

DATE 11/13/72

S. R. #18 (S.H. 449)

WEATHER overcast

SEC. 'K'

TEMP. 43°

DESCRIPTION Ties for Central Points - Twp. East Corp. to Republic

JOB NO.

LEFT

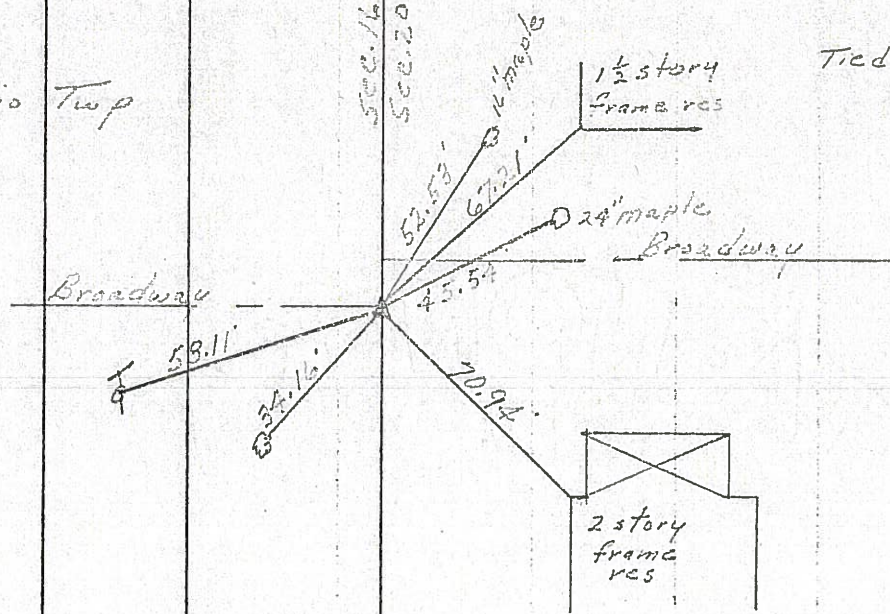
CENTER LINE

RIGHT

70

$\Delta = 00^\circ 47' \text{ Rt. (turned)}$
 P.I
 391472.20

Scipio Twp

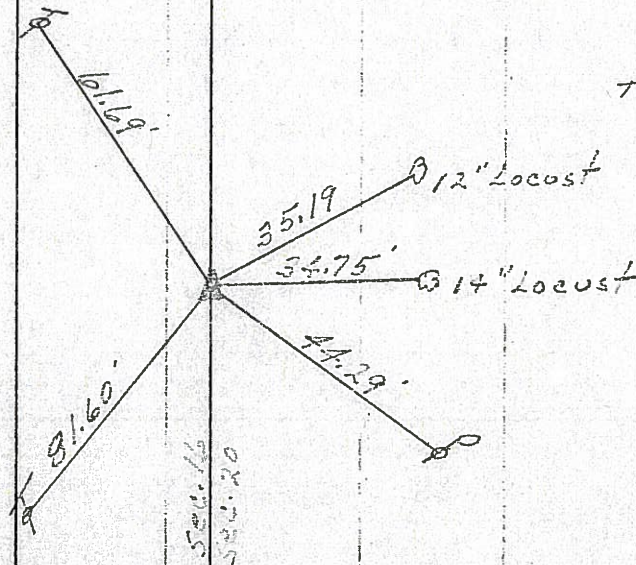


Tied 6/15/71

69

$\Delta = 00^\circ 30' \text{ Lt.}$
 P.I
 374437.12
 Fd. R.R spike 4'
 below surface. Set
 small spike atop
 4' to the surface

Scipio Twp.



Tied 6/14/71

PERSONNEL TITLE PERSONNEL TITLE

COUNTY Seneca

DATE 11/13/72

Ash

S. R. #18 (S.H. 449)

WEATHER overcast

Cronin

SEC. 'K'

TEMP. 43°

Ripple

Anderson

DESCRIPTION Ties for Control Points - Tiffin East Corp. to Republic

JOB NO.

LEFT

CENTER LINE

RIGHT



(70)

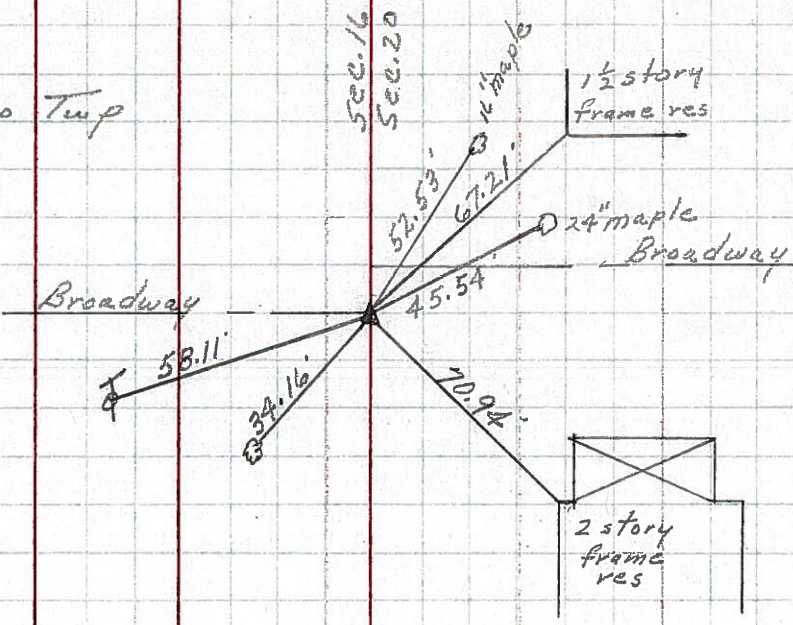
Scipio Twp

Tied 6/15/71

$\Delta = 00^\circ 47' \text{ Rt. (Turned)}$

P.I

391+72.20



Re-set P.K. nails
7-11-79
75°

(69)

Scipio Twp

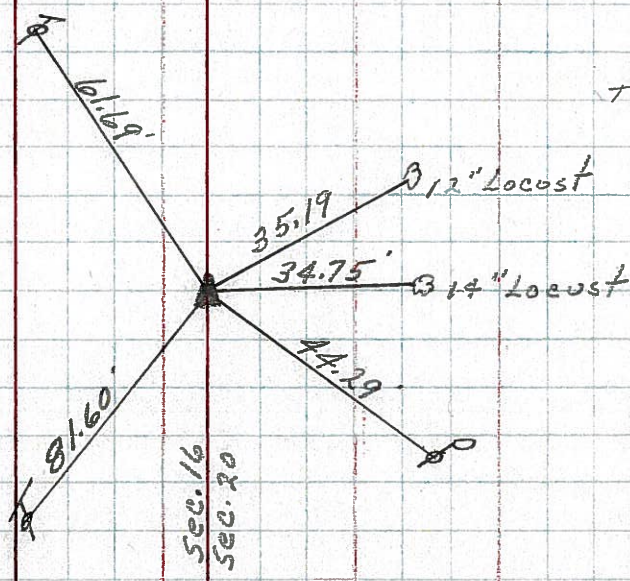
Tied 6/14/71

$\Delta = 00^\circ 30' \text{ Lt.}$

P.I

374+37.12

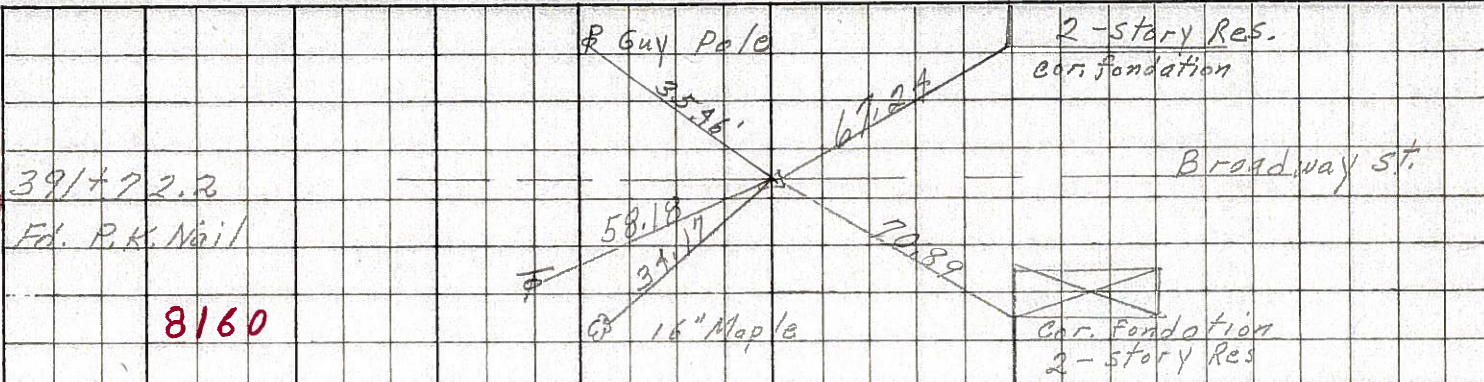
Fd. R.R. spike 1' below surface. Set small spike at top 1/2 to the surface



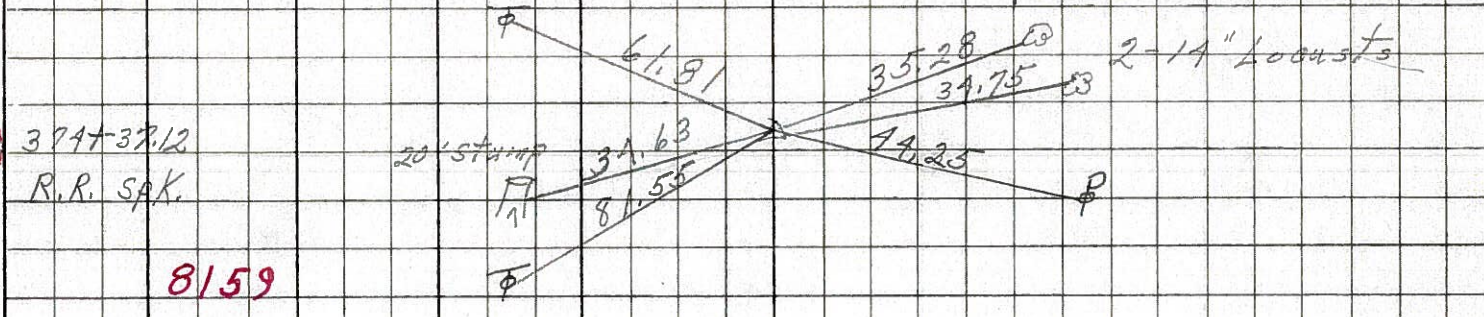
PERSONNEL	TITLE	PERSONNEL	TITLE	COUNTY	Seneca	DATE	10-31-68
Schneider				S. R.	18	WEATHER	Fair
Barbour				SEC.	Tiffin to Republic	TEMP.	50°
Redding							
Potts							

DESCRIPTION Ties for Control Points JOB NO. _____

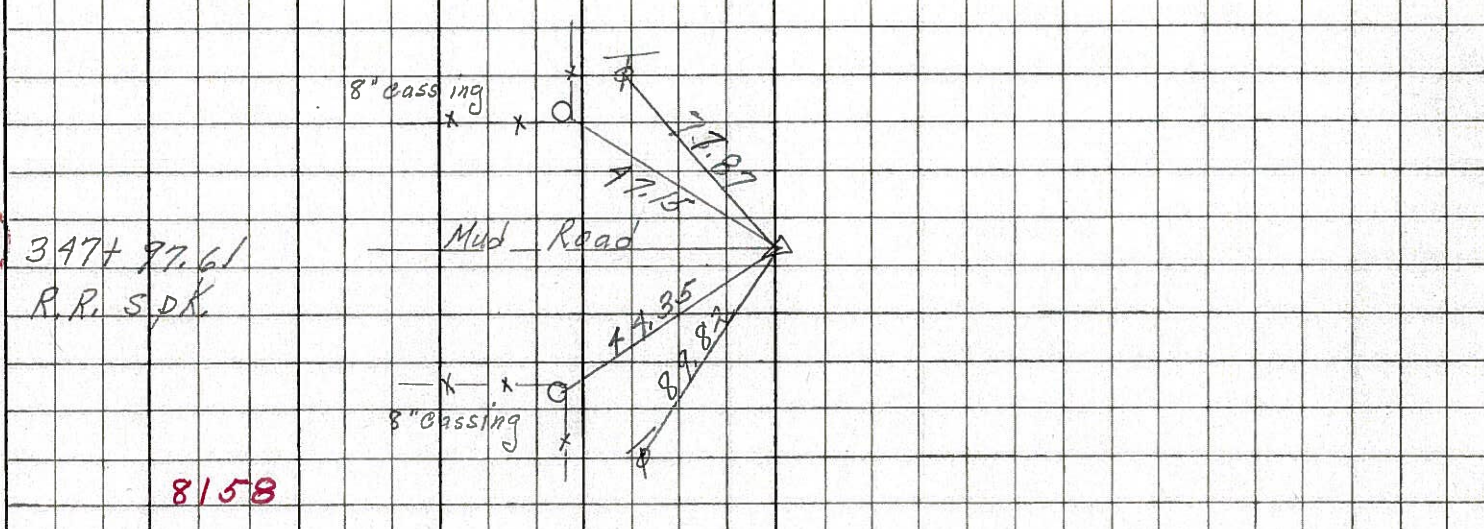
70



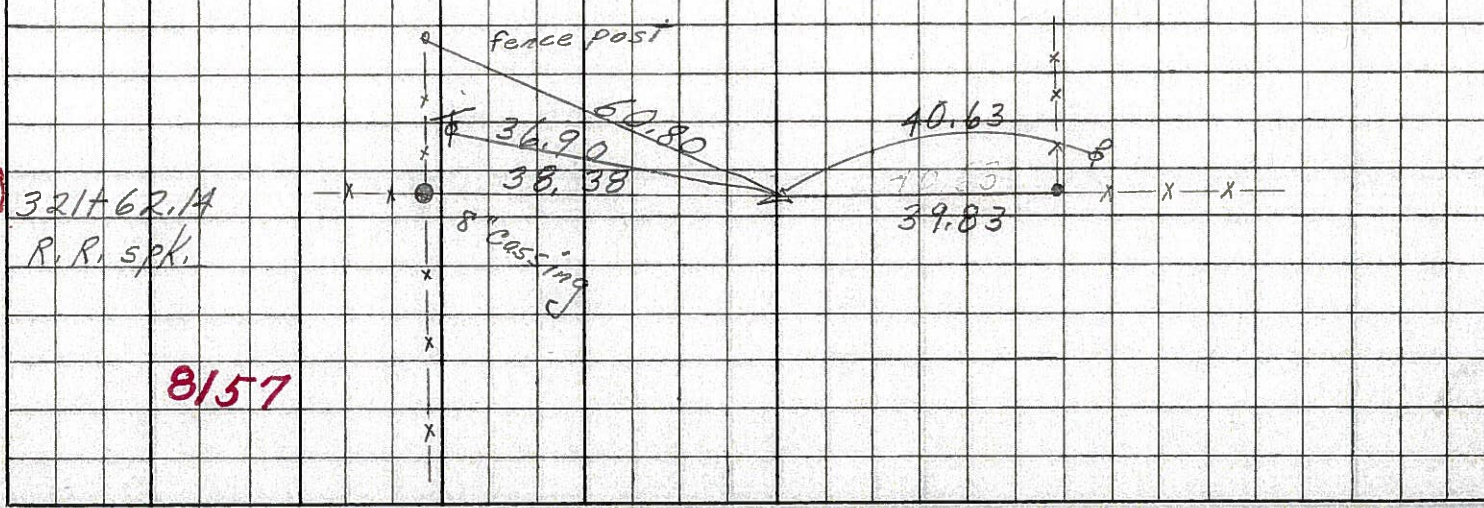
69



68



67



PERSONNEL TITLE PERSONNEL TITLE

COUNTY Seneca DATE 12-23-65

S. R. #18 WEATHER

SEC. K TEMP.

DESCRIPTION Tiffin - Republic JOB NO.

LEFT CENTER LINE RIGHT

(67)

Sta. 321+62.14
Found R.R. spk.

36.88 N.N. E. T. Pole
38.35 N. 8" iron Pipe F.P.
40.62 S. P. Pole
39.79 S. Cor Post
60.76 N.E. Fence Post

~~8157~~

~~8150~~

8157

(68)

Sta. 347+97.61
Found R.R. spk.

77.88 N.E. T. Pole
47.0¹⁵ N.E. 8" iron post. Cor. Post
44.3³⁵ N.W. 8" " " "
89.7⁸² N.W. T. Pole

~~8158~~

~~8159~~

8158

(69)

Sta. 374+37.12
Found R.R. spk.

34.63 N.W. bottle cap in 20" stud
34.75 S. " " in 14" Loam
44.25 SW P Pole
81.55 N.W.W. T. Pole
35.28 S.E. T. Locust
61.81 E N.E.

~~8157~~

8158

8159

(70)

Sta. 391+72.2
Found R.R. Nail
2" below surface
Broadway St.

67.24 S.E. to N.W. Cor. Foundation
20.98
71.04 S.W. " "
45.59 S.E. 24" Maple
52.55 S.E.E. 16" Maple
35.46 N.E. Guy Pole
58.18 N.W. T. Pole
34.17 N.W. 16" Maple

~~8159~~

8160

PERSONNEL	TITLE	PERSONNEL	TITLE	PERSONNEL	TITLE	PERSONNEL	TITLE
MORRISON	EA, I-C						
HOLCOMBE	EA, I-C						
SWORDEN	EA, I-D						
KRABILL	EA, I-C						

YTM COUNTY Seneca DATE 3/15/49

S. R. _____ WEATHER windy

SEC. _____ TEMP. +28°

DESCRIPTION Ref Ties Last 3 mi. S.R. #18 JOB NO. _____

