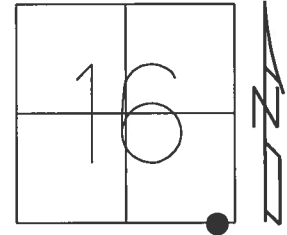


O.D.O.T. DISTRICT 2 SURVEY OFFICE (USE ONLY)

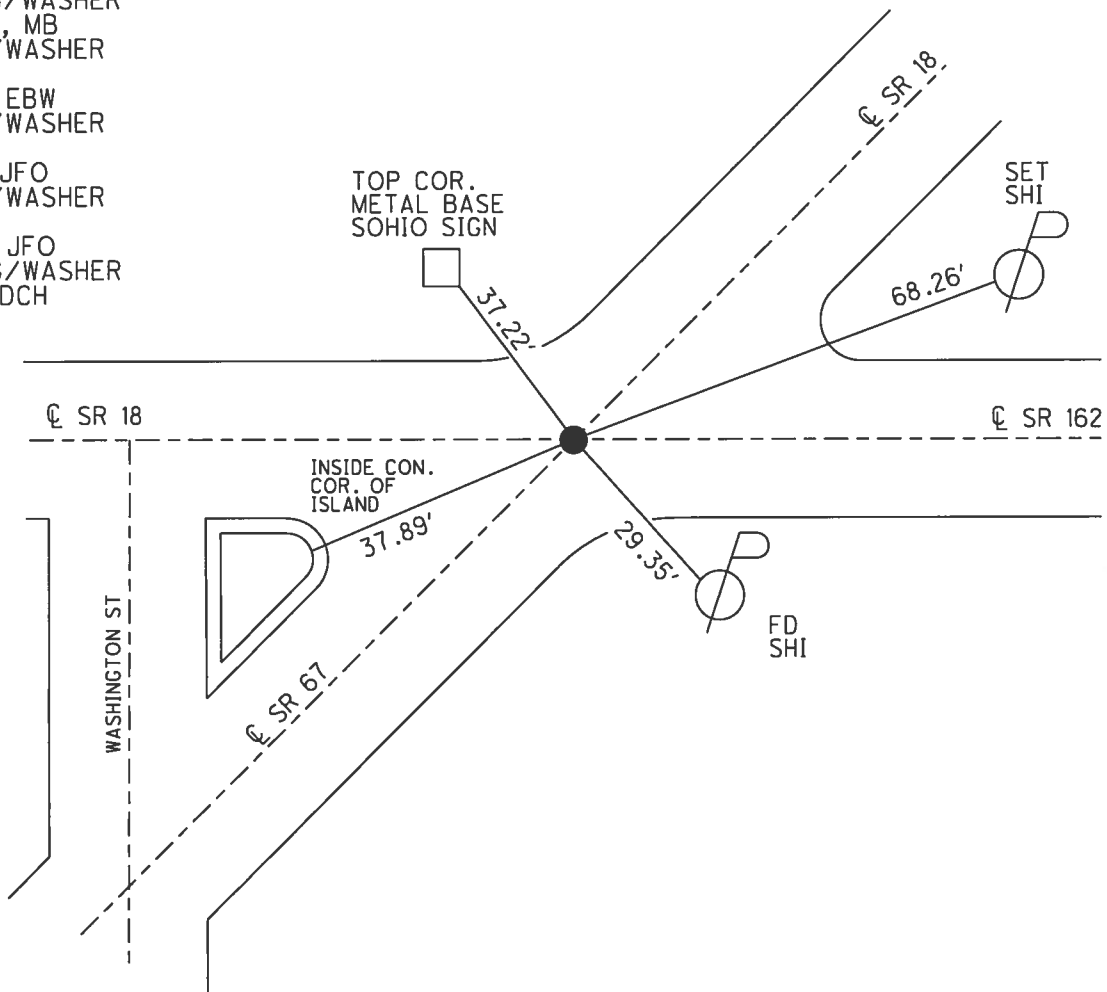
PERSONNEL	REFERENCE NO.	<u>71</u>	SHEET	<u>14</u>	OF	<u>17</u>
NOTES	RHOADES	DATE	<u>8/1/17</u>	ROUTE	<u>SR 18</u>	
H.C.	<u>HOMAN</u>	WEATHER	<u>SUNNY</u>	COUNTY	<u>SENECA</u>	
R.C.	<u>CARSON</u>	TEMP.	<u>70°</u>	TOWNSHIP	<u>SCIPPIO</u>	
	<u>POORE</u>			SECTION	<u>16</u>	
				T	<u>2</u>	R
					<u>16</u>	E

TYPE MONUMENT MAG/WASHER  
 ON SURFACE - ~~BELOW~~ ON  
 LEFT - ☉ PAV'T - ~~RIGHT~~ 1.5'  
12' TO LT EDGE PAVEMENT  
 S.L.M. 1211+58.04  
 Grid: Northing: 531607.876 Easting: 1826098.508



RECORD:  
 FD MINE SPIKE  
 3.5" DOWN ATOP  
 5/8" IPIN  
 6.5" DOWN  
 SET MAG/WASHER  
 8/18/04, MB  
 FD MAG/WASHER  
 REF71  
 5/7/14, EBW  
 FD MAG/WASHER  
 REF1  
 1/8/16, JFO  
 FD MAG/WASHER  
 REF29  
 2/5/16, JFO  
 SET MAG/WASHER  
 8/1/17, DCH

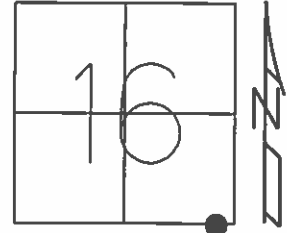
NOTE:  
 SR 162=REF 1  
 SR 67=REF 29



**O.D.O.T. DISTRICT 2 SURVEY OFFICE (USE ONLY)**

PERSONNEL \_\_\_\_\_ REFERENCE NO. 71 SHEET 14 OF 17  
 NOTES RHOADES DATE 7-8-15 ROUTE SR 18  
 H.C. O'DONNELL WEATHER SUNNY COUNTY SENECA  
 R.C. HOMAN TEMP. 61°F TOWNSHIP SCIPIO  
 \_\_\_\_\_ SECTION 16  
 \_\_\_\_\_ T 2 N R 16 E

TYPE MONUMENT MAG/WASHER  
 ON SURFACE - ~~BELOW~~ ON \_\_\_\_\_  
 LEFT - ☉ PAV'T - ~~RIGHT~~ 1.5'  
12' TO LT EDGE PAVEMENT  
 S.L.M. 1211+58.04

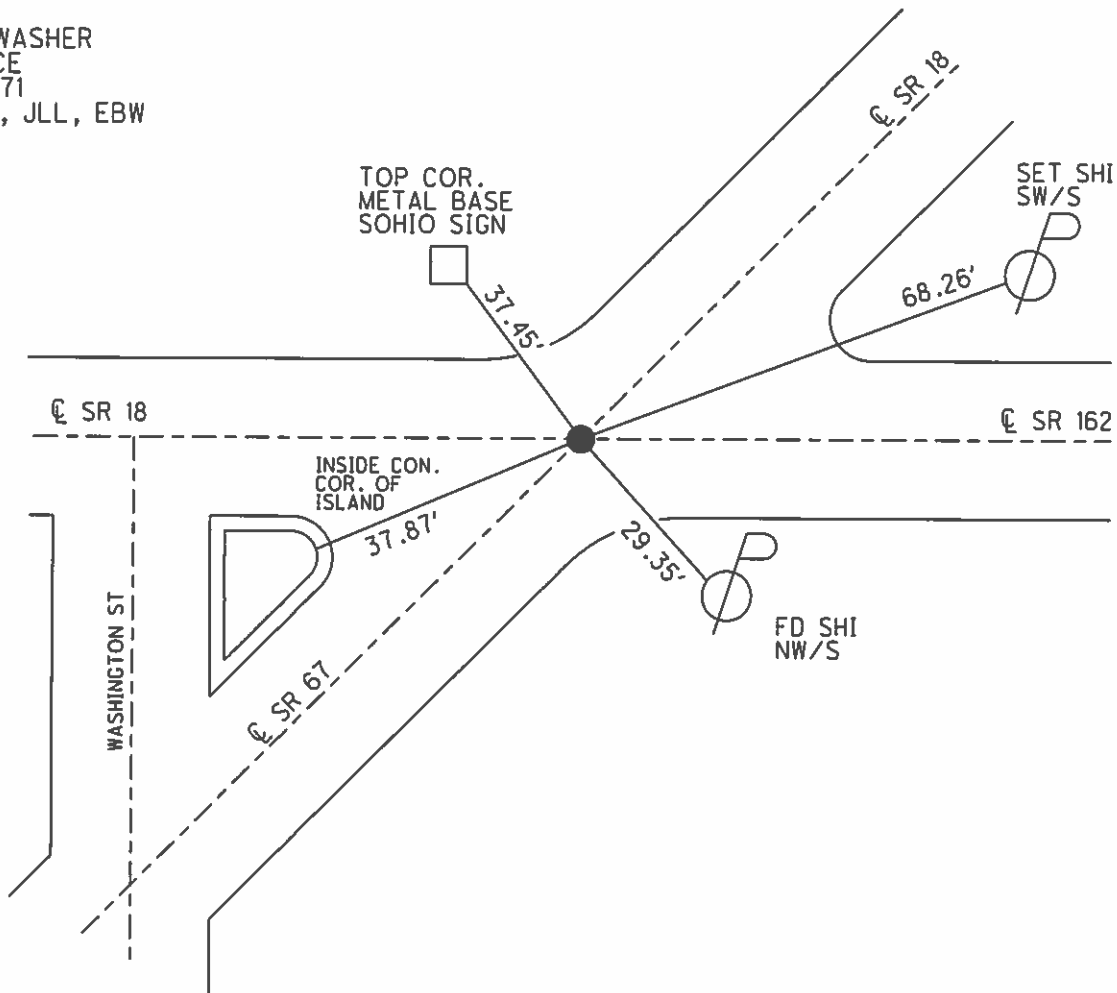


Grid: Northing: 531607.8899 Easting: 1826098.4816

RECORD:  
 FD MINE SPIKE 3.5" BELOW  
 ATOP 5/8" IRON PIN 6.5" BELOW

NOTE:  
 SR 162=REF 1  
 SR 67=REF 29

SET MAG/WASHER  
 8-18-04, MB  
 FD MAG/WASHER  
 @ SURFACE  
 GPS, REF 71  
 05-07-14, JLL, EBW



O.D.O.T. DISTRICT 2 SURVEY OFFICE

PERSONNEL

SR 18 = 71

1 ON SR 162

REFERENCE NO. 29

SHEET 3 OF 3

NOTES HOMAN

DATE 4-15-04

ROUTE SR 67

H.C. NUHFER

WEATHER SUNNY

COUNTY SENECA

R.C. ARMS

TEMP. 55°

TOWNSHIP SCIPIO

SECTION 16-21

T 2 N R 16 E

TYPE MONUMENT SEE BELOW

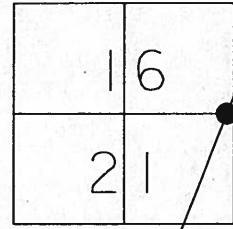
ON SURFACE - BELOW SEE BELOW

LEFT - ~~C~~ PAVT - ~~RIGHT~~ 1.5' LT

TO EDGE PAVEMENT

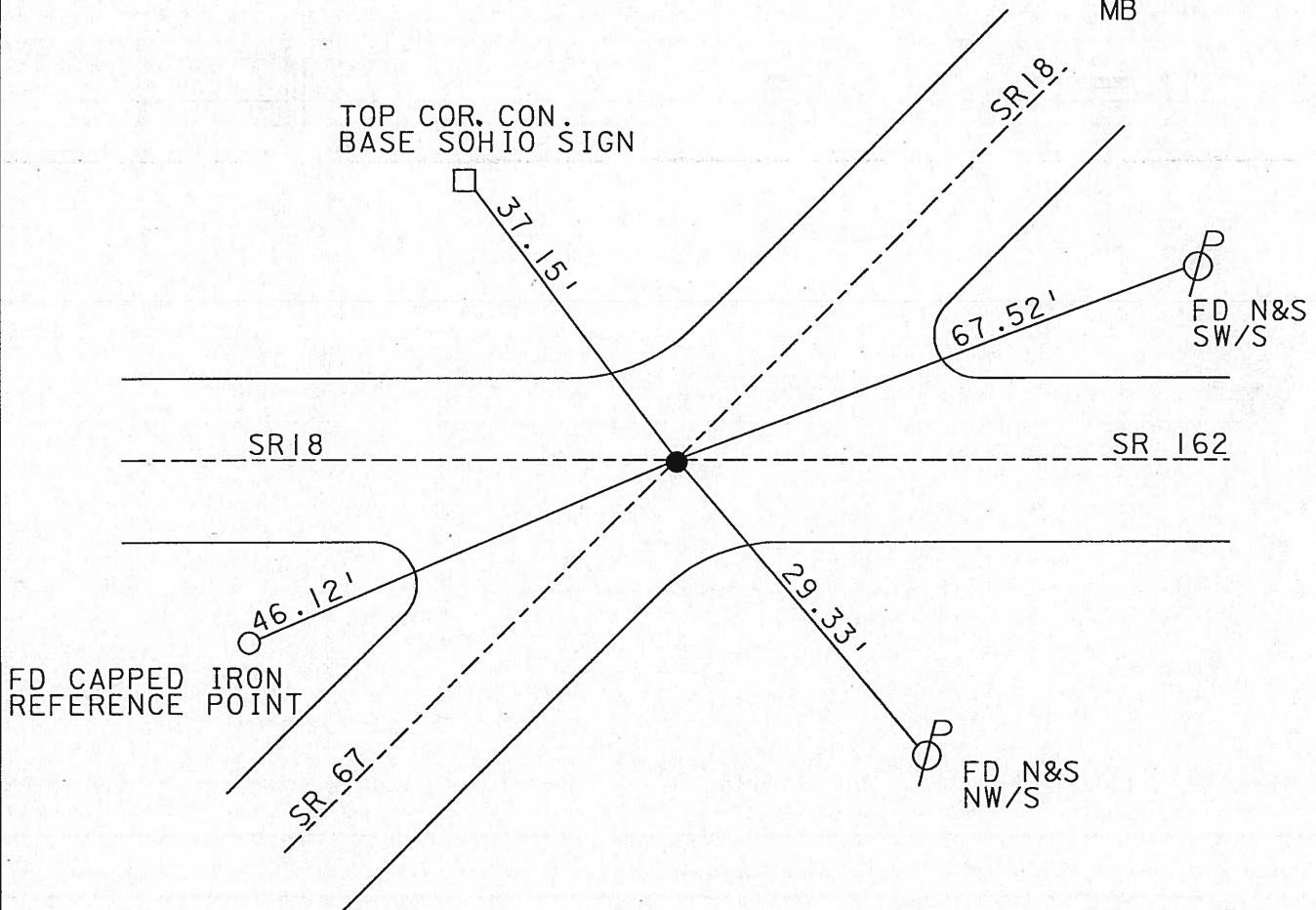
S.L.M. 584+84 ± ON SR 67 ; 0+00 ON SR 162  
12 11+75 ON SR 18

71



ED MINE SPIKE 3 1/2" DOWN OVER A  
3/8" IRON PIN 6 1/2" DOWN

SET MAG NAIL  
& WASHER  
8-18-04  
MB



# O.D.O.T. DISTRICT 2 SURVEY OFFICE

PERSONNEL

REFERENCE NO. 71

SHEET 23 OF 24

NOTES CHENEY

H.C. RIPPLE

DATE 7-2-1993

ROUTE #18

R.C. BARBOUR

WEATHER Cloudy

COUNTY SENECA

GEYMAN

TEMP. 85°

TOWNSHIP SCIPIO

SECTION 16 & 21

T 21 R 16 E

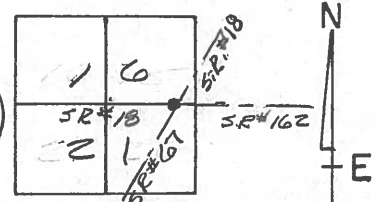
TYPE MONUMENT PK/WASHER

ON SURFACE - ~~BELOW~~ ON

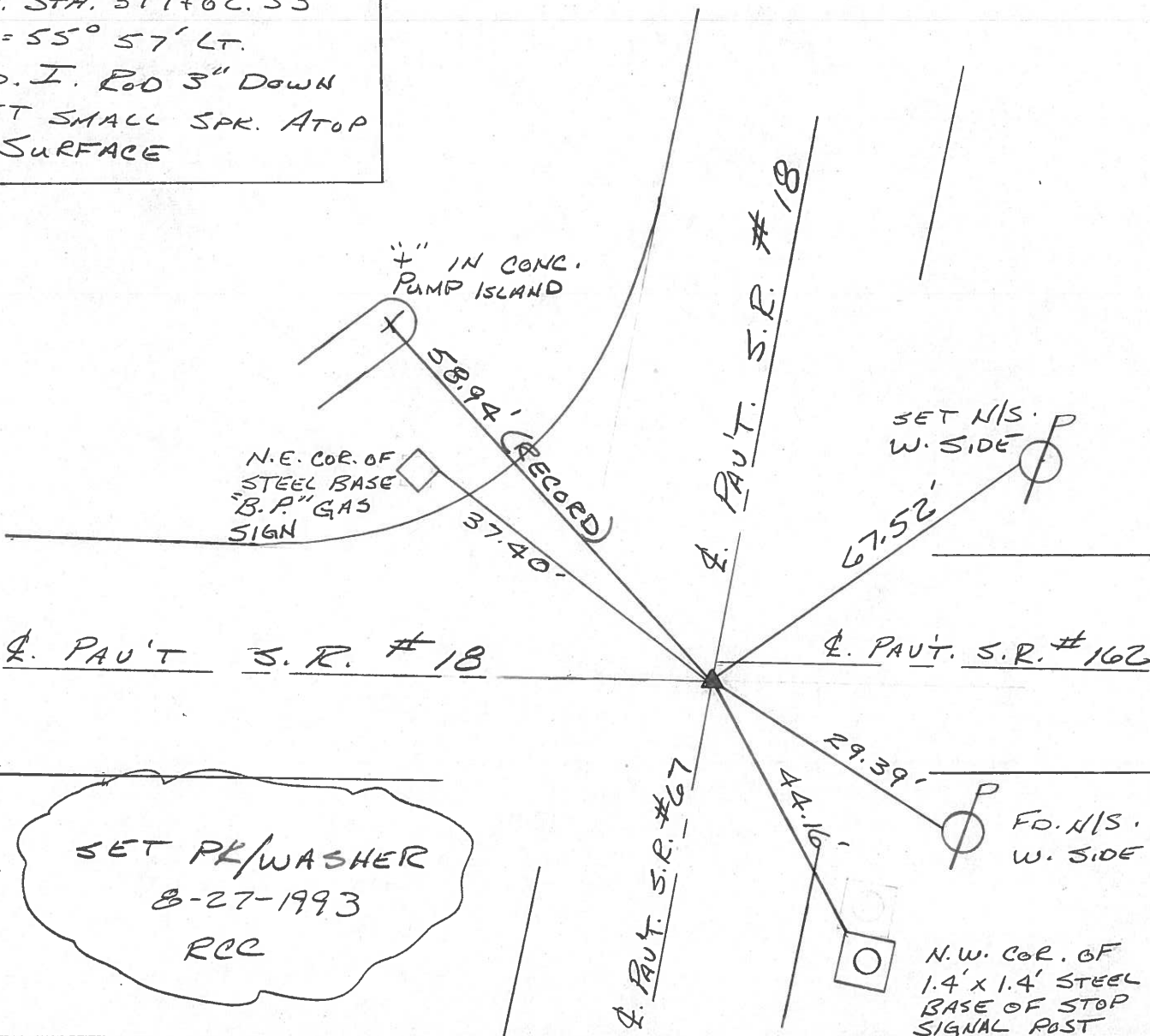
~~LEFT~~ - EDGE PAV'T. - ~~RIGHT~~ ON E. ALL S.R.'s (EXCEPT 2' S. OF E. S.R. #162)

TO EDGE PAVEMENT

S.L.M. 1211+75



RECORD: 6-15-1971  
 P.I. STA. 397+02.33  
 $\Delta = 55^\circ 57' \text{ LT.}$   
 F.D. I. ROD 3" DOWN  
 SET SMALL SPK. ATOP  
 @ SURFACE



SET PK/WASHER  
 8-27-1993  
 RCC

N.W. COR. OF  
 1.4' x 1.4' STEEL  
 BASE OF STOP  
 SIGNAL POST

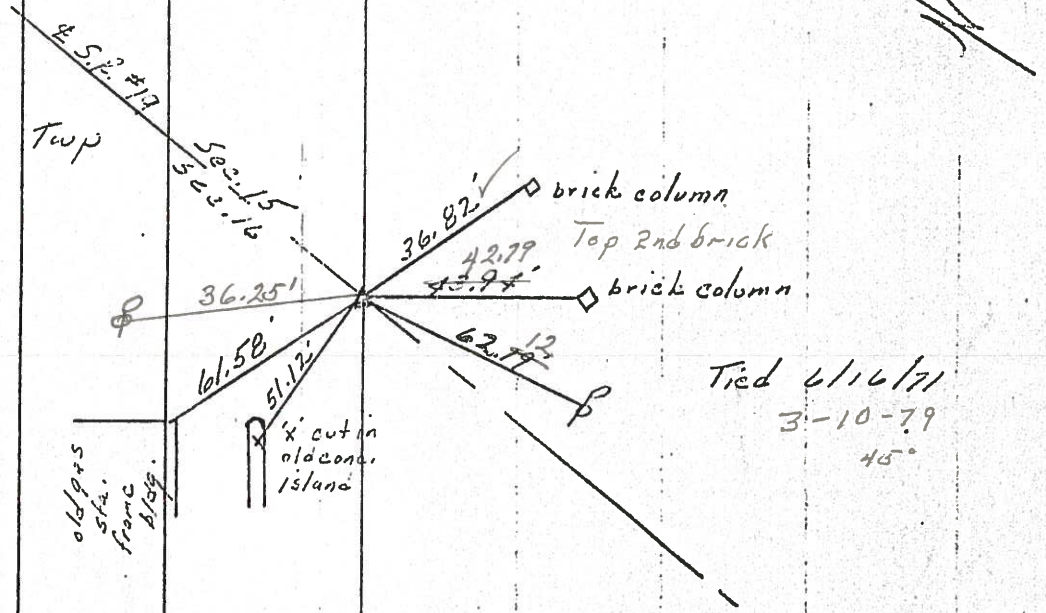
PERSONNEL	TITLE	PERSONNEL	TITLE	COUNTY	DATE	WEATHER	TEMP.
Ash				Seipio	11/15/72	overcast-snow	32°
Brown				S. R. #18 (S. 24th St.)			
Anderson				SEC. K			

DESCRIPTION: *Section from Seipio Twp. to Kilbourne St. sign post* JOB NO. \_\_\_\_\_

72

$\Delta = 00^\circ 13' R.$   
 P.I.  
 403486.66  
 P.K. Nail

Seipio Twp

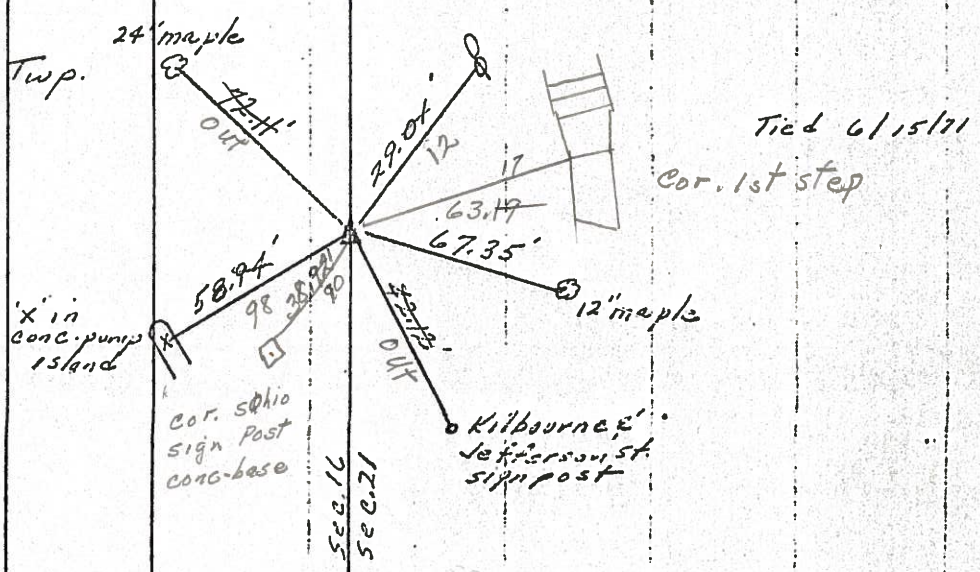


Reset P.K. Nails  
 9-11-79  
 80°

71

$\Delta = 55^\circ 57' Lt.$   
 P.I.  
 397403.33  
 Fd. Iron pin 3" below surface. set small spike at top to the surface

Seipio Twp.



drawn

PERSONNEL	TITLE	PERSONNEL	TITLE
Ash			
Cronin			
Elipole			
Anderson			

COUNTY Seneca

DATE 11/15/72

S. R. #18 (S.4449)

WEATHER overcast-snow

SEC. 'K'

TEMP. 32°

DESCRIPTION Ties for Control Points - Twp. East Cor. to Republic JOB NO.

LEFT

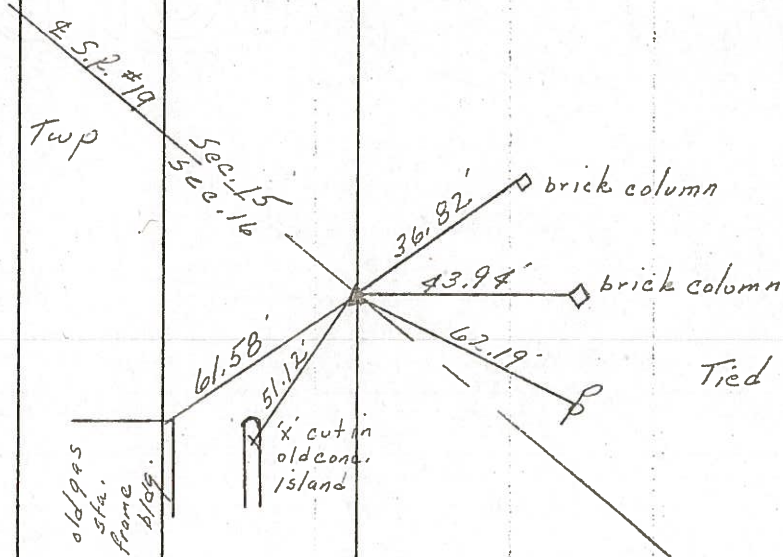
CENTER LINE

RIGHT

72

$\Delta = 00^{\circ}13'RT.$   
 P.I  
 403486.66

Scipio Twp

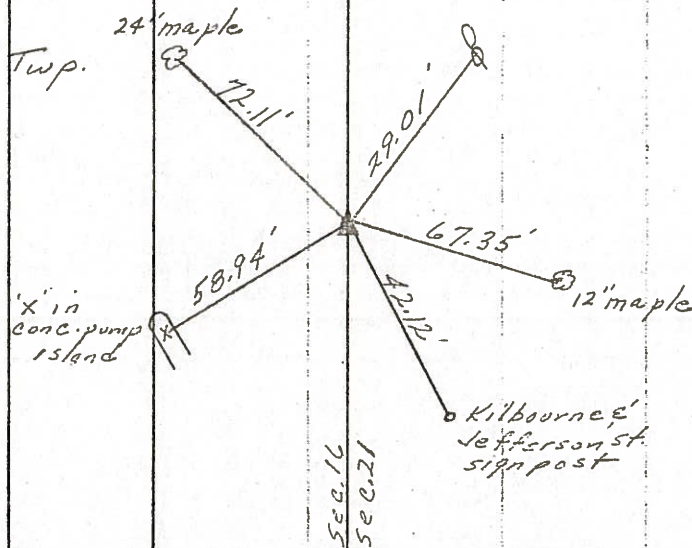


Tied 6/16/71

71

$\Delta = 55^{\circ}57'LT.$   
 P.I  
 397402.33  
 Fd. Iron pin 3"  
 below surface set  
 small spike atop  
 to the surface

Scipio Twp.



Tied 6/15/71

PERSONNEL	TITLE	PERSONNEL	TITLE
Ash			
Cronin			
Pipple			
Anderson			

COUNTY Seneca

DATE 11/15/72

S. R. #18 (S.H.449)

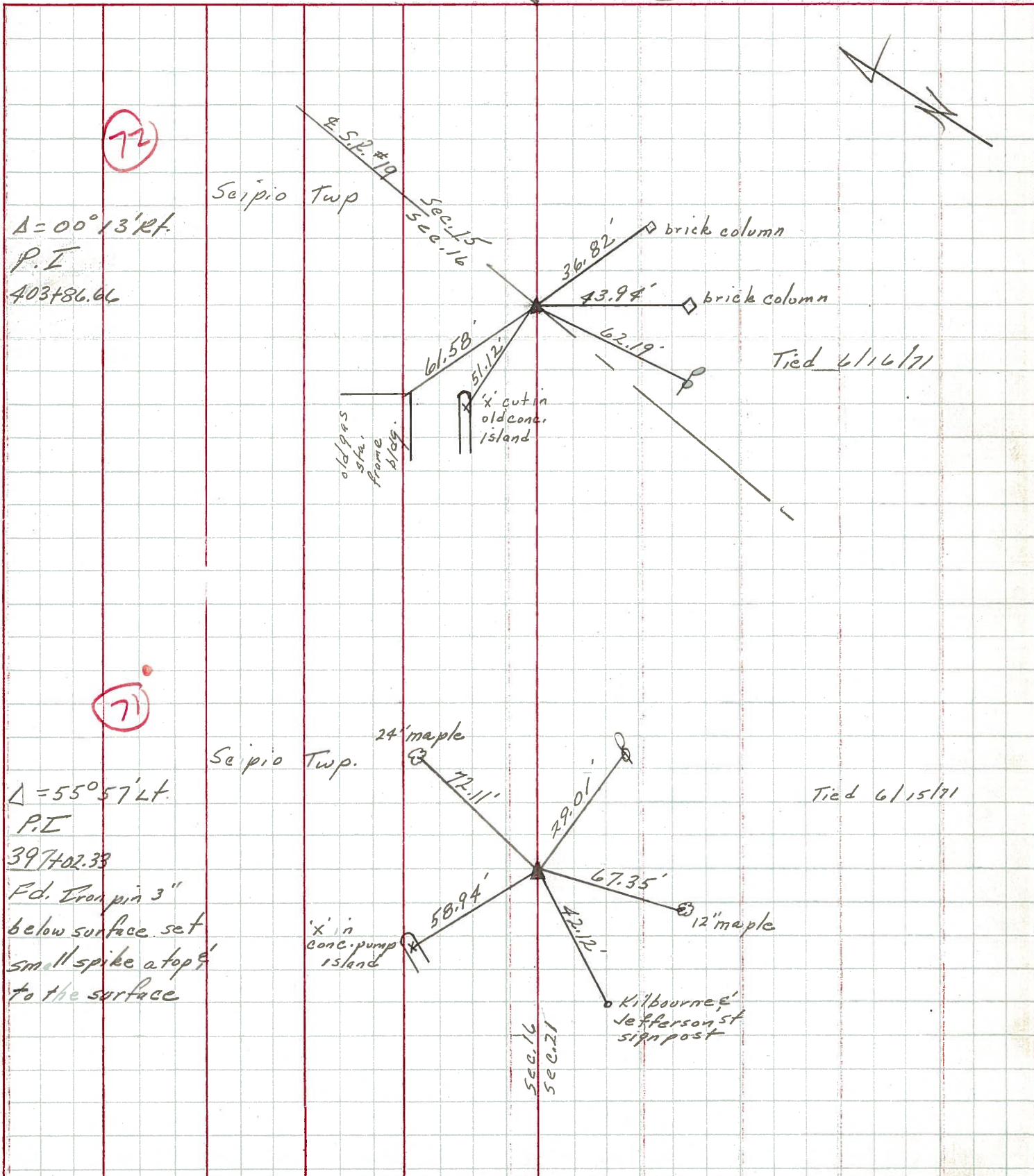
WEATHER overcast-snow

SEC. K

TEMP. 32°

DESCRIPTION Ties for Control Points - Tiffin East Corp to Republic JOB NO.

LEFT CENTER LINE RIGHT



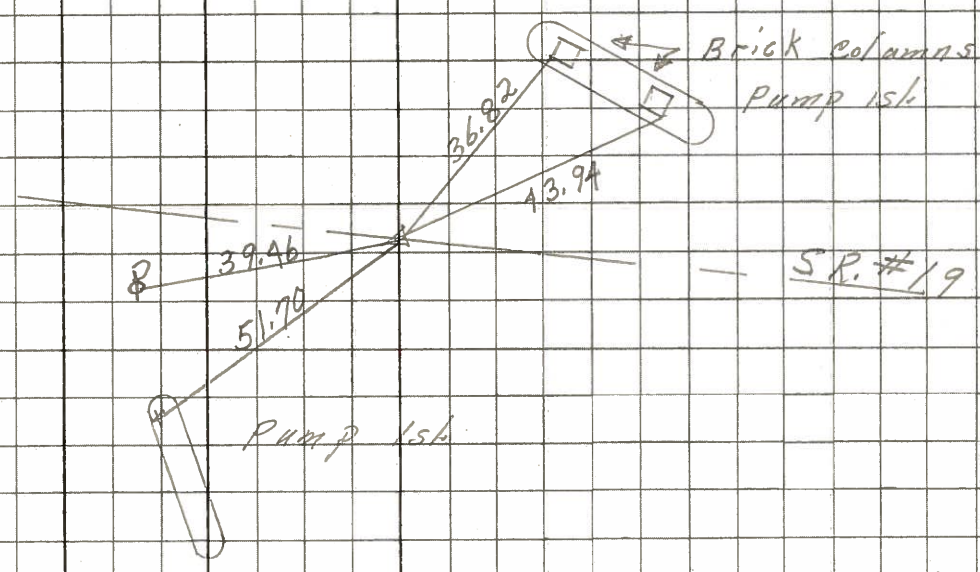
PERSONNEL	TITLE	PERSONNEL	TITLE	COUNTY	DATE	WEATHER	TEMP.
Schneider		Potts		Seneca	11-8-68	cloudy	35°
Mosser				S. R. 18			
Barbour				SEC. Tiffin to Republic			
Redding							

DESCRIPTION Ties for Control Points JOB NO. \_\_\_\_\_

72

400+ 71.35  
P.K. Nail

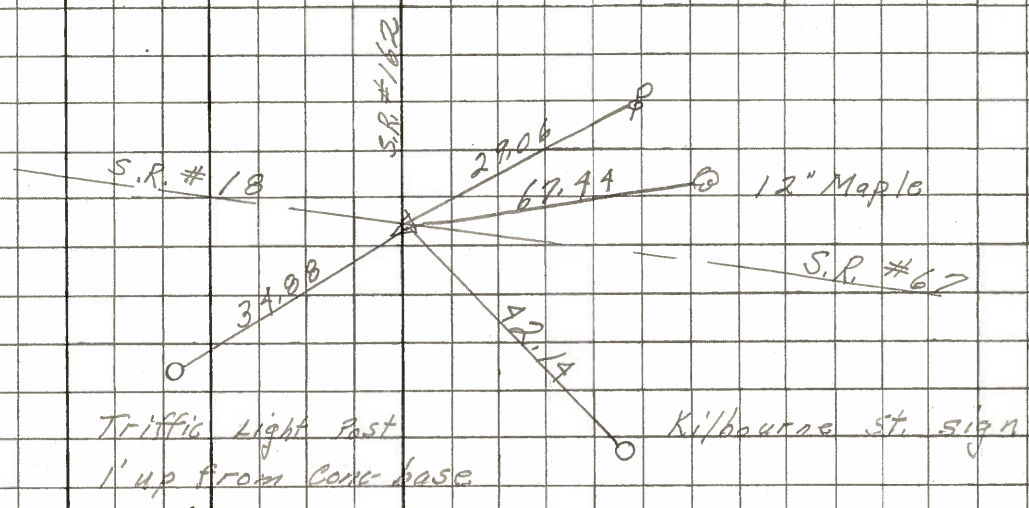
8162



71

397+ 02.33  
P.K. Nail

8161





PERSONNEL TITLE PERSONNEL TITLE

11-8-68

COUNTY Seneca

DATE 11-23-68

S. R. # 18

WEATHER

SEC. K

TEMP.

DESCRIPTION Tiffin to Republic

JOB NO.

LEFT

CENTER LINE

RIGHT

(71)

sta. 397+02.33  
Found Iron Pin  
3" below surface

29.06 S.E. Power Pole  
~~72.08 N. 24" Maple~~  
67.44 S. 12" "  
42.14 S.W. 2" Pipe Kilbuck  
34.88 N.W. 1" light Post st. Sign  
0.95' up

~~#~~

8161

(72)

sta. 400+71.35  
Found Iron Pin  
Intersection of SR #19  
#176 on SR #19

39.46 P. Pole N.W.  
61.58 Gas station N.E. cor.  
51.70 "X" in old pump 1st.  
43.94 Brick columns  
36.82 " "

~~#~~

8162

PERSONNEL TITLE PERSONNEL TITLE PERSONNEL TITLE PERSONNEL TITLE  
 MORRISON EA 1-C COUNTY Seneca DATE 3/15/49  
 HOLCOMBE EA 1-C S. R. WEATHER Windy  
 SWORDEN EA 1-D SEC. TEMP. +28°  
 KRABILL EA 1-C  
 DESCRIPTION Ref Ties Last 3 Mi. S.R. #18 JOB NO.

