

O.D.O.T. DISTRICT 2 SURVEY OFFICE (USE ONLY)

PERSONNEL

REFERENCE NO. 72

SHEET 1 OF 28

NOTES TRENKA

DATE 5-29-18

ROUTE SR 18

H.C. RHOADES

WEATHER SUNNY

COUNTY SENECA

R.C. TRENKA

TEMP. 85°

TOWNSHIP SCIPIO

SECTION 16

DWG BY JAMES PID 101281

T 2 N R 16 E

TYPE MONUMENT P.K./WASHER

~~ON SURFACE~~ - BELOW 1.5"

OFFSET Q PAVEMENT 0.5' ~~RT~~ : RT

10.5' TO RT EDGE PAVEMENT

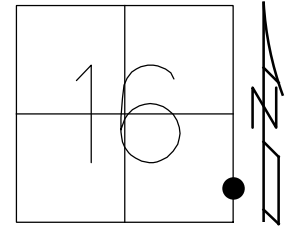
STATION: 1216+15.90

HORZ. DATUM: NAD83 2011

GEOID: NAVD88 2012A

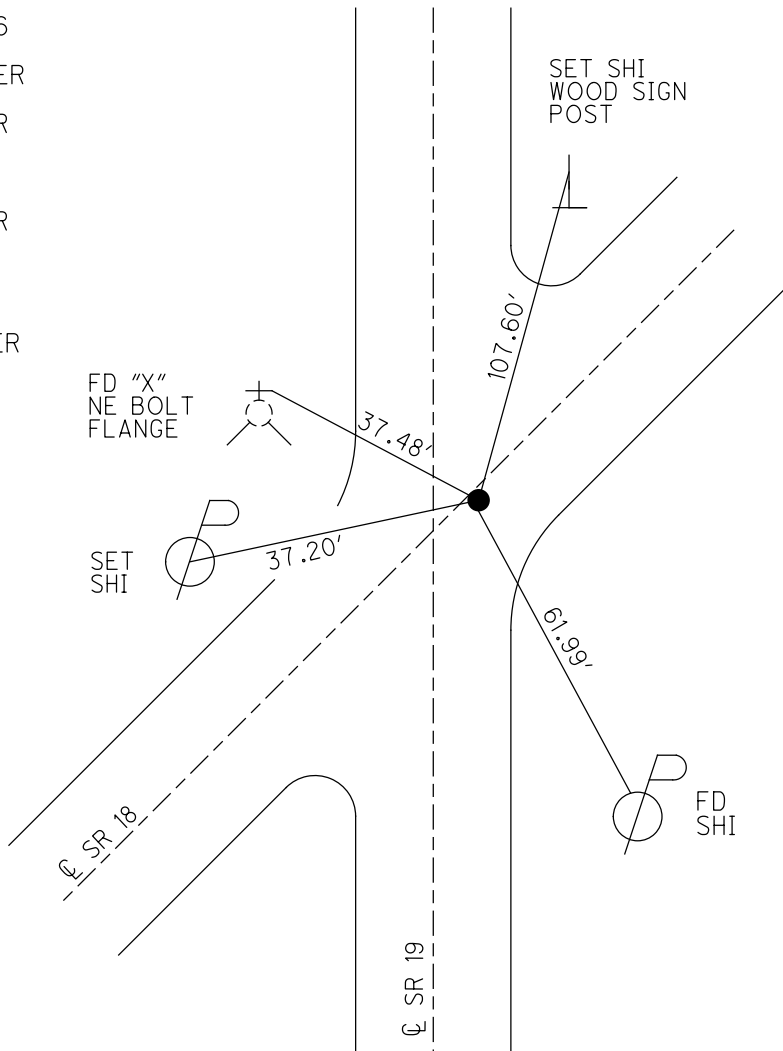
GRID: NORTHING: 532175.120

EASTING: 1826480.835



RECORD: P.I.  
 $\Delta=00^{\circ}13'$  RT  
 STA. 403+86.66  
 6-16-1971  
 SET P.K./WASHER  
 8-27-1993, RCC  
 FD P.K./WASHER  
 1.5" DOWN  
 REF72  
 5-08-14, EBW  
 FD P.K./WASHER  
 1 1/2" DOWN  
 REF72  
 2/27/17, JFO  
 5-24-18, JMR  
 SET MAG/WASHER  
 1-8-19, JFO

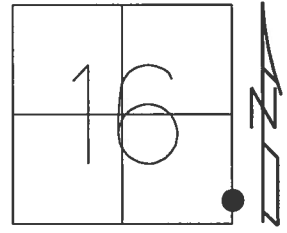
NOTE: SR 19 REF 56



O.D.O.T. DISTRICT 2 SURVEY OFFICE (USE ONLY)

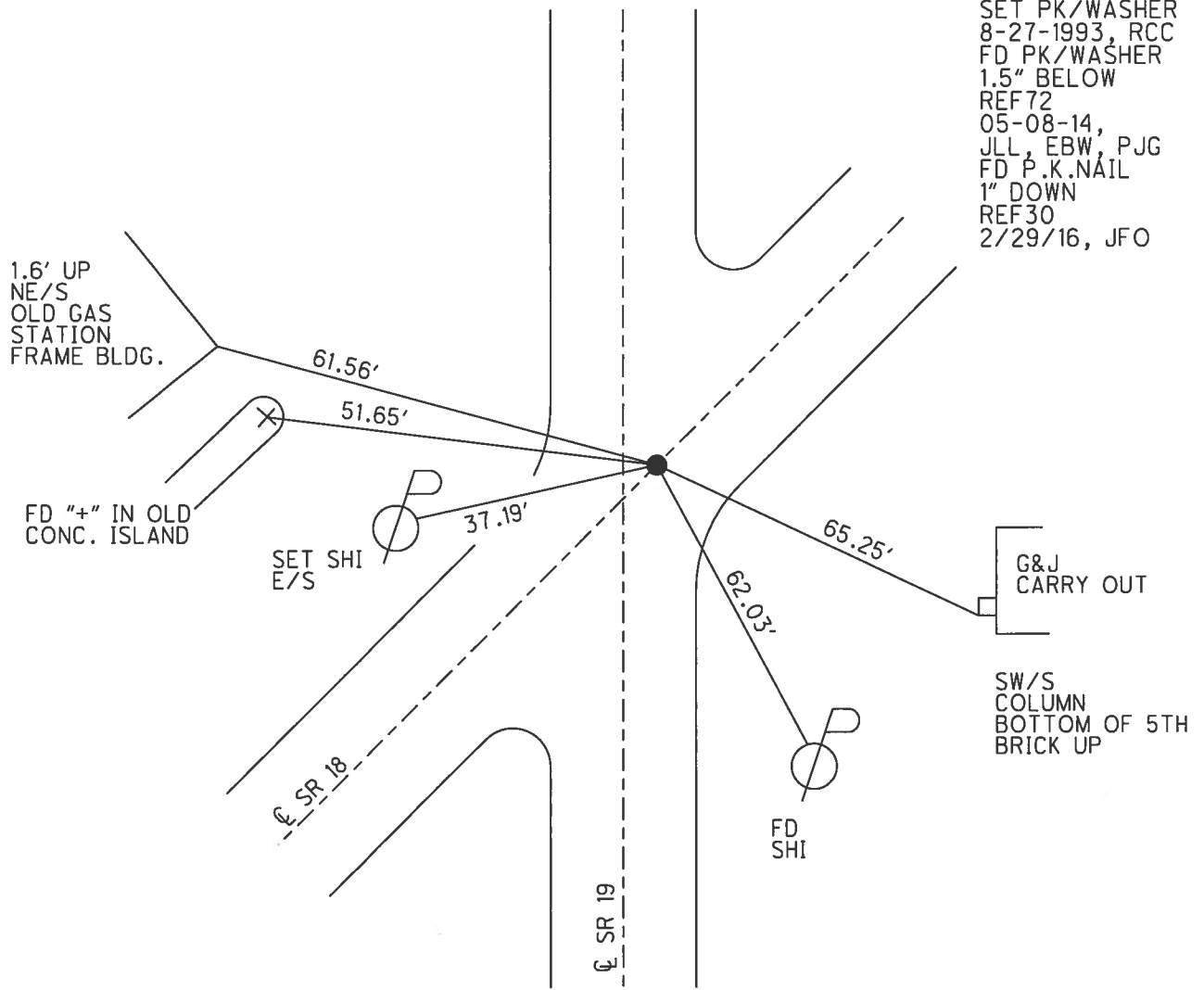
PERSONNEL \_\_\_\_\_ REFERENCE NO. 72 SHEET 15 OF 17  
 NOTES CHENEY DATE 7-2-93 ROUTE SR 18  
 H.C. RIPPLE WEATHER CLOUDY COUNTY SENECA  
 R.C. BARBOUR TEMP. 85°F TOWNSHIP SCPIO  
 \_\_\_\_\_ GEYMAN \_\_\_\_\_ SECTION 16  
 T 2 N R 16 E

TYPE MONUMENT PK/WASHER  
~~ON SURFACE~~ - BELOW 1"  
~~LEFT~~ - CL PAV'T - RIGHT 0.5'  
10.5' TO RT EDGE PAVEMENT  
 S.L.M. 1218+42.14  
 Grid: Northing: 532175.144 Easting: 1826480.850



NOTE:  
 SR 19=REF 56

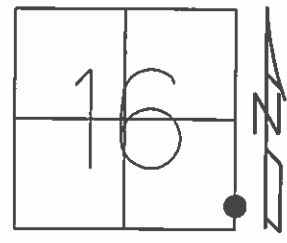
RECORD:  
 P.I.  $\Delta=00^{\circ}13'$  RT  
 STA. 403+86.66  
 6-16-1971  
 SET PK/WASHER  
 8-27-1993, RCC  
 FD PK/WASHER  
 1.5" BELOW  
 REF72  
 05-08-14,  
 JLL, EBW, PJG  
 FD P.K.NAIL  
 1" DOWN  
 REF30  
 2/29/16, JFO



**O.D.O.T. DISTRICT 2 SURVEY OFFICE (USE ONLY)**

PERSONNEL \_\_\_\_\_ REFERENCE NO. 72 SHEET 15 OF 17  
 NOTES CHENEY DATE 7-2-93 ROUTE SR 18  
 H.C. RIPPLE WEATHER CLOUDY COUNTY SENECA  
 R.C. BARBOUR TEMP. 85°F TOWNSHIP SCIPIO  
 \_\_\_\_\_ GEYMAN \_\_\_\_\_ SECTION 16  
 T 2 N R 16 E

TYPE MONUMENT PK/WASHER  
~~ON SURFACE~~ - BELOW 1"  
~~LEFT~~ - CL PAV'T - RIGHT 0.5'  
10.5' TO RT EDGE PAVEMENT  
 S.L.M. 1218+42.14



Grid: Northing: 532175.1305 Easting: 1826480.8463

RECORD:  
 P.I. Δ=00°13' RT  
 STA. 403+86.66  
 6-16-1971

NOTE:  
 SR 19=REF 56

SET PK/WASHER  
 8-27-1993, RCC  
 FD PK/WASHER  
 1.5" BELOW  
 GPS, REF 72  
 05-08-14,  
 JLL, EBW, PJG

1.6' UP  
 NE/S  
 OLD GAS  
 STATION  
 FRAME BLDG.

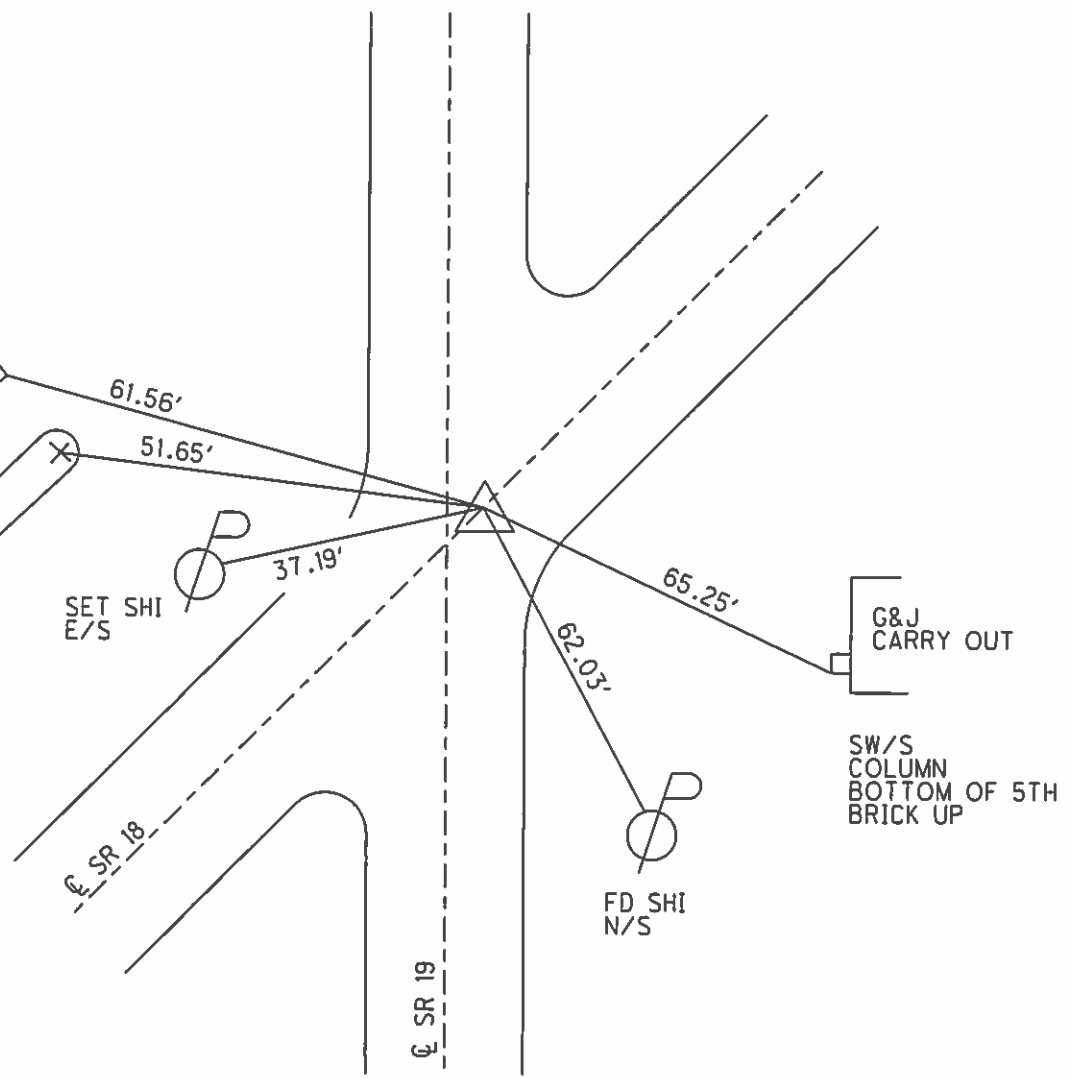
FD "+" IN OLD  
 CONC. ISLAND

SET SHI  
 E/S

G&J  
 CARRY OUT

SW/S  
 COLUMN  
 BOTTOM OF 5TH  
 BRICK UP

FD SHI  
 N/S



# O.D.O.T. DISTRICT 2 SURVEY OFFICE

PERSONNEL

REFERENCE NO. 72

SHEET 24 OF 24

NOTES CHENEY

H.C. RIPPLE

DATE 7-2-1993

ROUTE #18

R.C. BARBOUR

WEATHER CLOUDY

COUNTY SENECA

GEYMAN

TEMP. 85°

TOWNSHIP SCRIPHO

SECTION 15 & 16

T2 N R 16 E

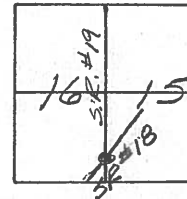
TYPE MONUMENT PK/WASHER

~~CONC~~ SURFACE - BELOW 1"

~~SET~~ - & PAU'T. - RIGHT 0.5' (3'E'LY. & S.R.#19)

10.5' TO EDGE PAVEMENT

S.L.M. 1218+62

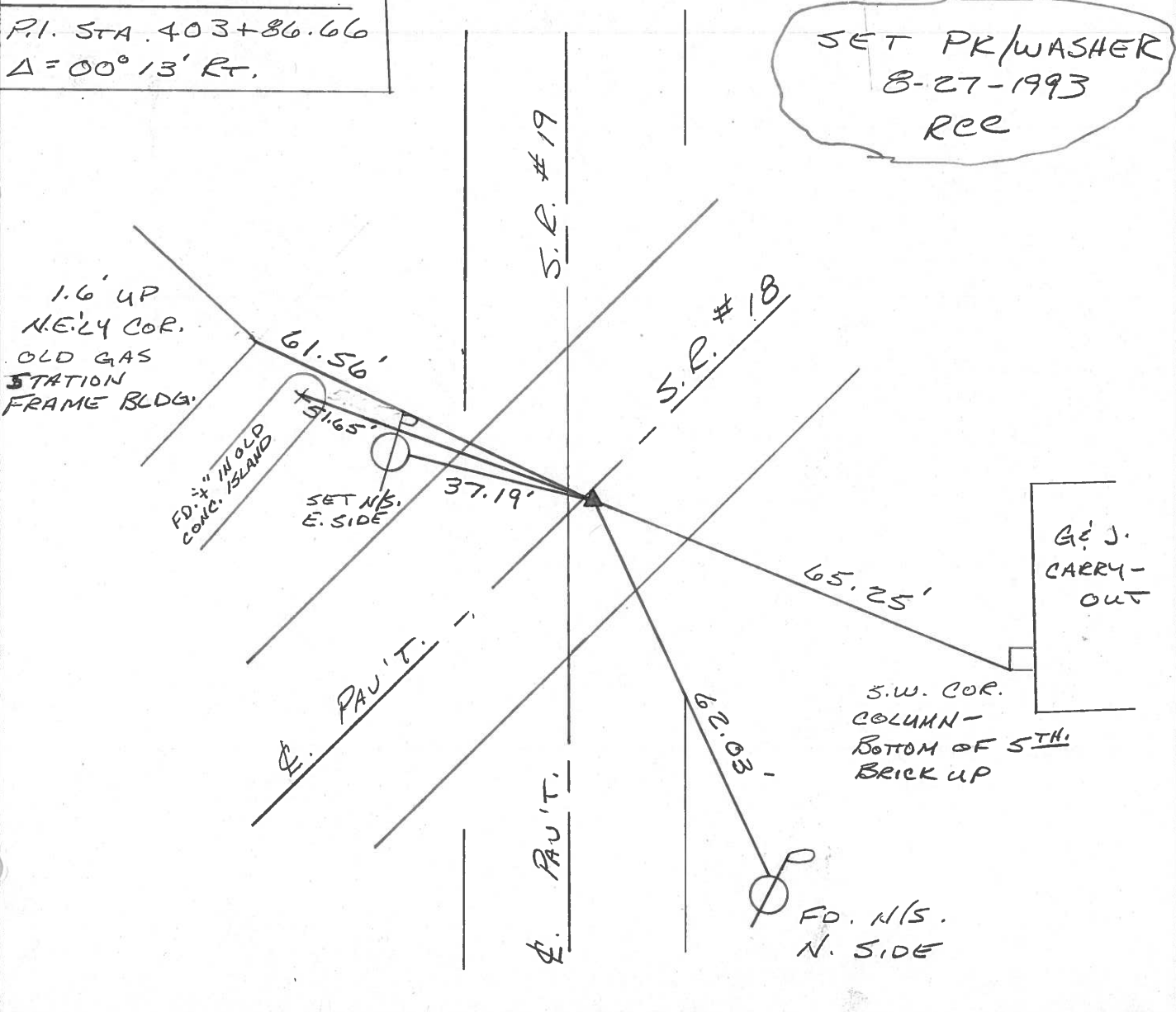


RECORD: 6-16-1971

P.I. STA. 403+86.66

$\Delta = 00^\circ 13' \text{ Rt.}$

SET PK/WASHER  
 8-27-1993  
 RCE





PERSONNEL	TITLE	PERSONNEL	TITLE
Ash			
Gronin			
Elm			
Anderson			

COUNTY Seneca

DATE 11/15/72

S. R. #18 (S.H.449)

WEATHER overcast-snow

SEC. K

TEMP. 32°

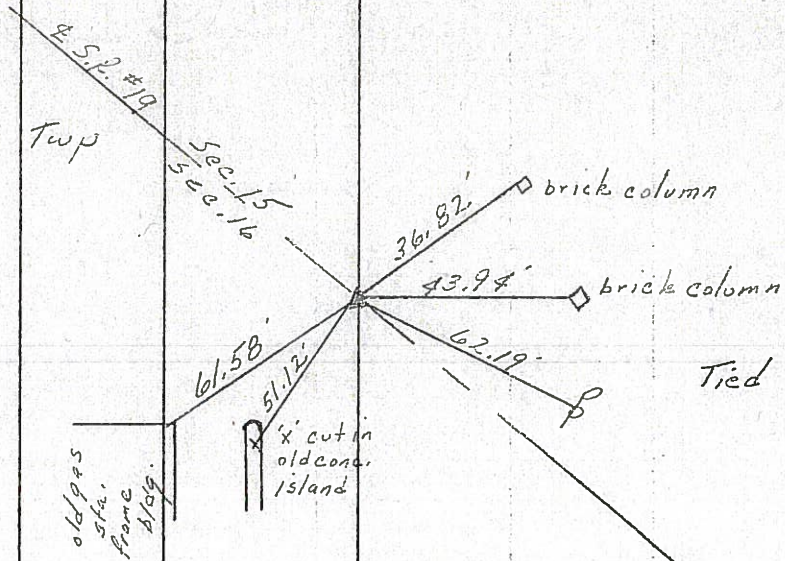
DESCRIPTION Ties for Control Points - Twp. East Corn to Revolet

LEFT CENTER LINE RIGHT

72

$\Delta = 00^{\circ}13'RT.$   
 P.I  
 403486.66

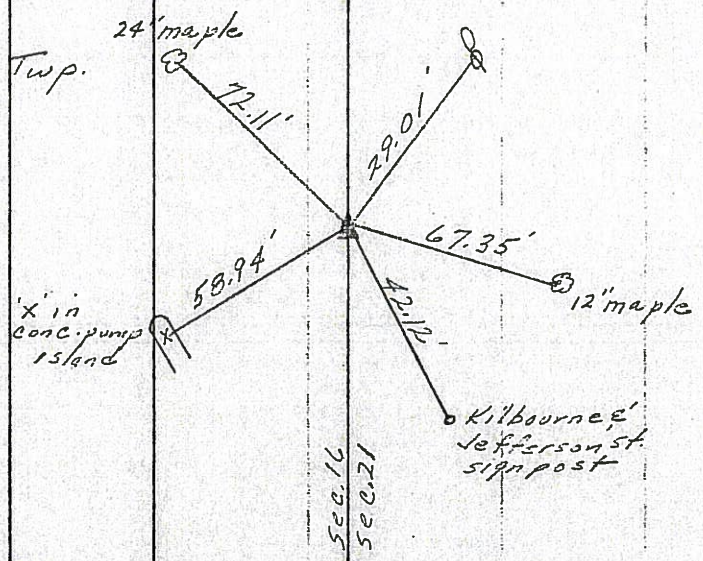
Seipio Twp



71

$\Delta = 55^{\circ}57'LT.$   
 P.I  
 397402.33  
 Fd. Iron pin 3"  
 below surface set  
 small spike atop  
 to the surface

Seipio Twp.



PERSONNEL TITLE PERSONNEL TITLE

COUNTY Seneca

DATE 11/15/72

Ash

Cronin

Ripple

Anderson

S. R. #18 (S.H.449)

WEATHER overcast-snow

SEC. K

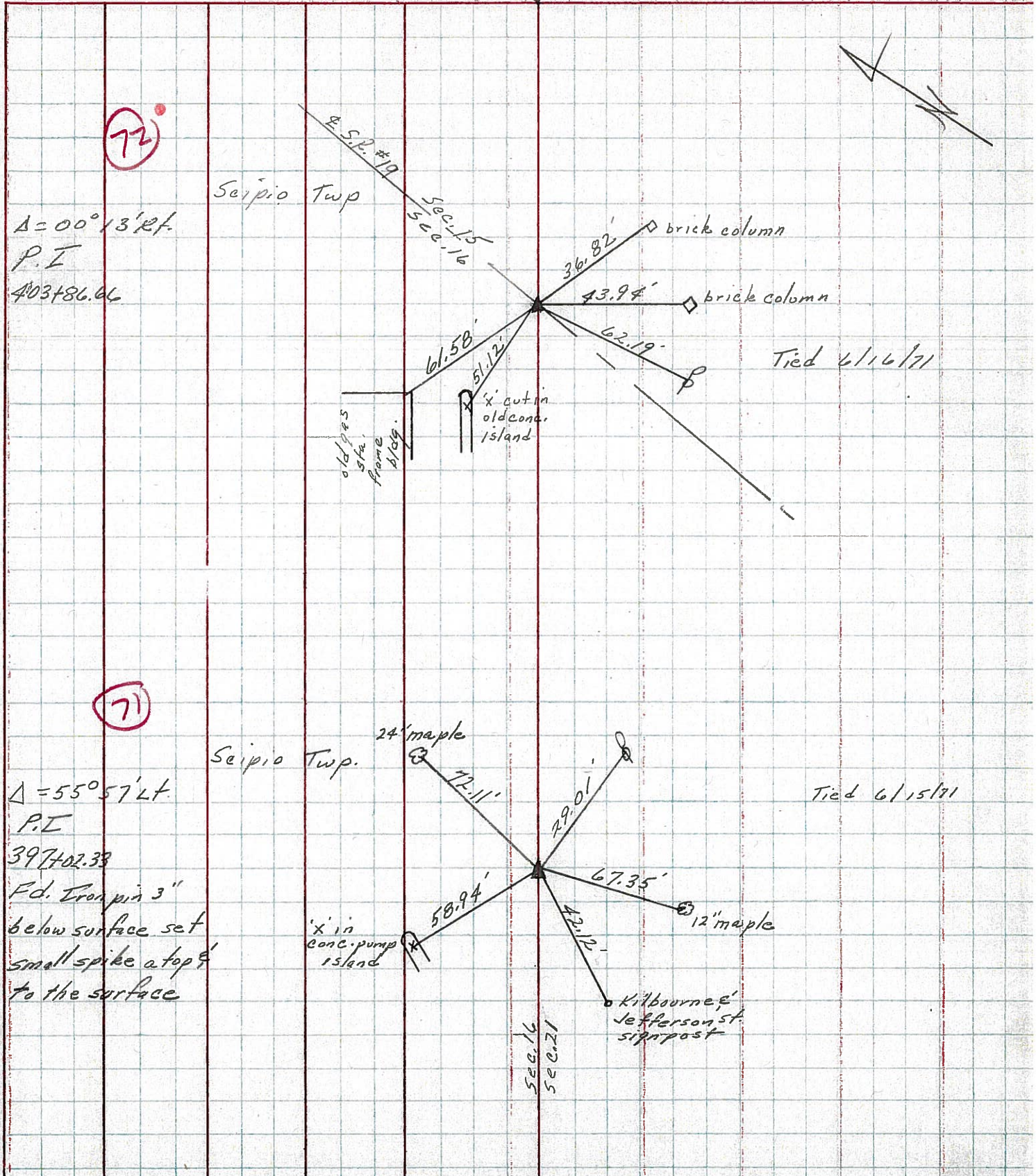
TEMP. 32°

DESCRIPTION Ties for Control Points - Tiffin East Corp to Republic JOB NO.

LEFT

CENTER LINE

RIGHT



PERSONNEL	TITLE	PERSONNEL	TITLE
Schneider		Potts	
Mosser			
Barbour			
Redding			

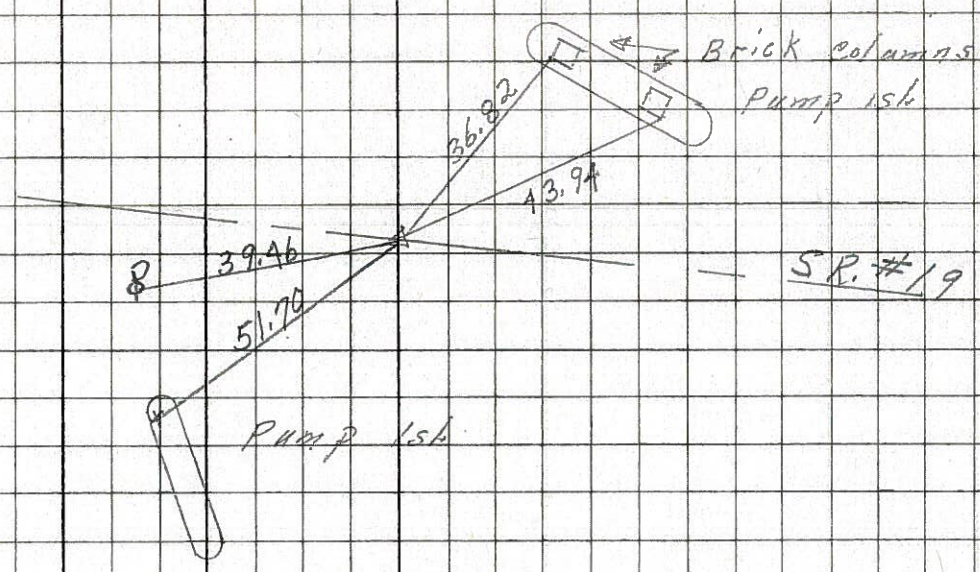
COUNTY Seneca DATE 11-8-68  
 S. R. 18 WEATHER Cloudy  
 SEC. Tiffin to Republic TEMP. 35°

DESCRIPTION Ties for Control Points JOB NO. \_\_\_\_\_  
 LEFT CENTER LINE RIGHT

72

400+ 71.35  
P.K. Nail

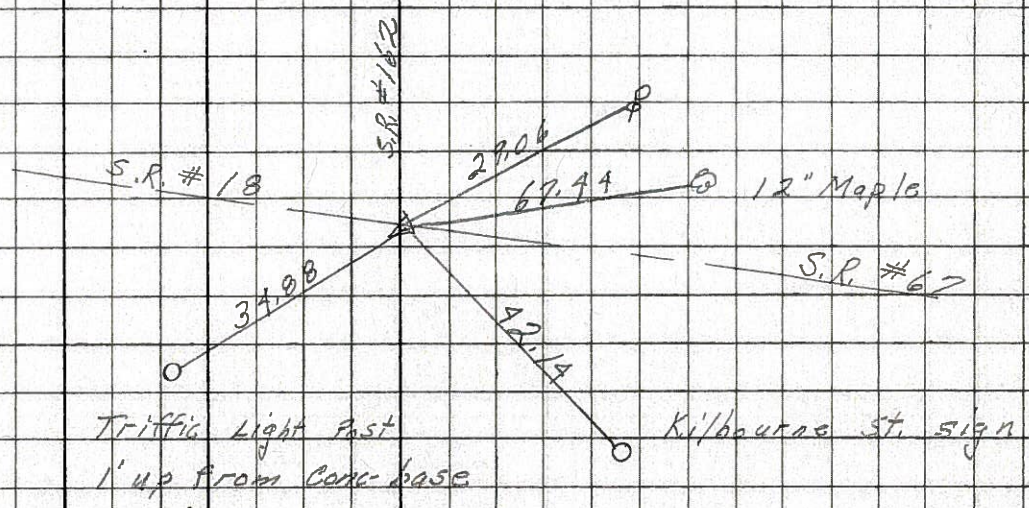
8162



71

397+ 02.33  
P.K. Nail

8161





PERSONNEL TITLE PERSONNEL TITLE

COUNTY Seneca DATE 11-23-68

S. R. # 18 WEATHER

SEC. K TEMP.

DESCRIPTION Tiffin to Republic JOB NO.

LEFT CENTER LINE RIGHT

(71)

Sta. 397+02.33  
Found Iron Pin  
3" below surface

29.06 S.E. Power Pole  
~~22.08 N. 24" Maple~~  
67.44 S. 12" "  
42.14 S.W. 2" Pipe Kilbaur.  
34.88 N.W. 6" Light Post st. Sign  
0.75' up

~~#~~

8161

(72)

Sta. 400+71.35  
Found Iron Pin  
Intersection of S.R. # 19  
# 176 on S.R. # 19

39.46 P. Pole N.W.  
61.58 Gas station N.E. cor.  
51.70 "X" in old pump 161.  
43.94 Brick columns  
36.82 " "

~~#~~

8162

PERSONNEL TITLE PERSONNEL TITLE PERSONNEL TITLE PERSONNEL TITLE  
 MORRISON EA 1-C COUNTY Seneca DATE 3/15/49  
 HOLCOMBE EA 1-C S. R. WEATHER Windy  
 SWORDEN EA 1-D SEC. TEMP. +28°  
 KRABILL EA 1-C  
 DESCRIPTION Ref Ties Last 3 mi. S.R. #18 JOB NO.

