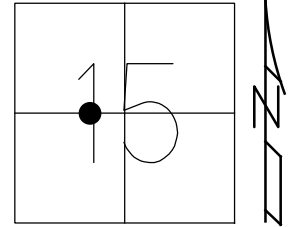


O.D.O.T. DISTRICT 2 SURVEY OFFICE (USE ONLY)

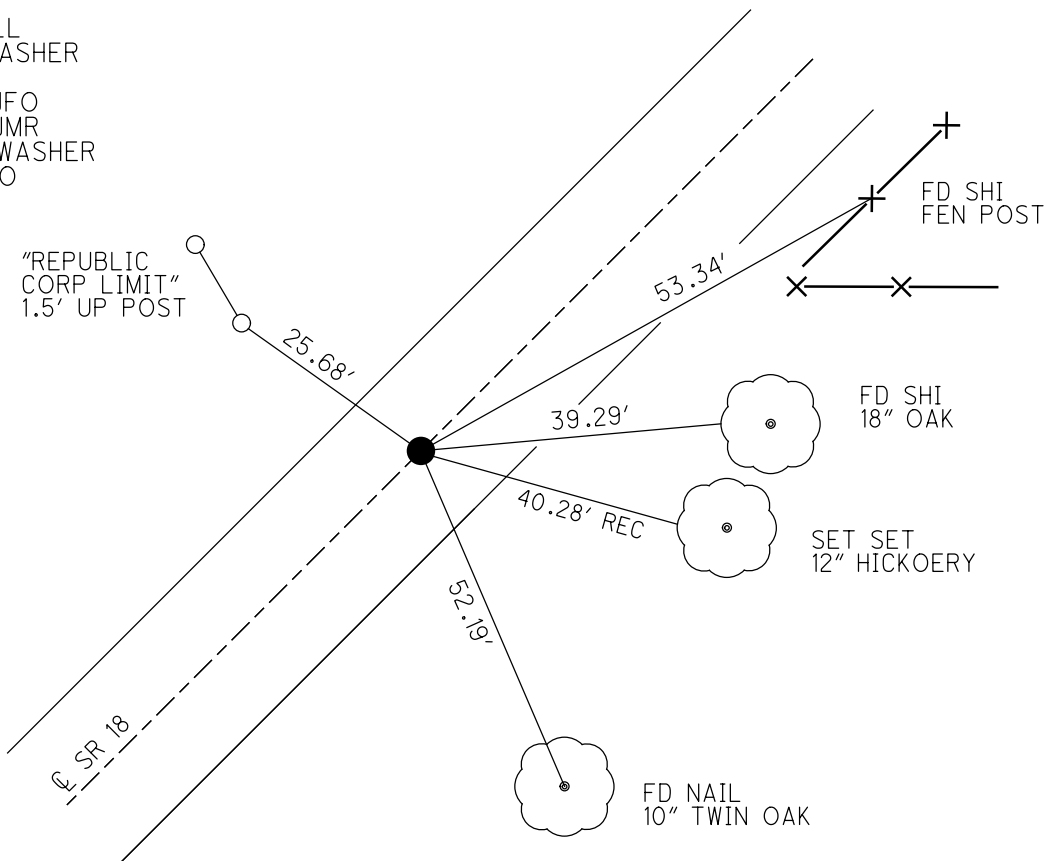
PERSONNEL	REFERENCE NO. <u>73</u>	SHEET <u>2</u> OF <u>28</u>
NOTES <u>TRENKA</u>	DATE <u>5-29-18</u>	ROUTE <u>SR 18</u>
H.C. <u>RHOADES</u>	WEATHER <u>SUNNY</u>	COUNTY <u>SENECA</u>
R.C. <u>TRENKA</u>	TEMP. <u>85°</u>	TOWNSHIP <u>SCIPIO</u>
DWG BY <u>JAMES</u>	PID <u>101281</u>	SECTION <u>15</u>
		T <u>2</u> N R <u>16</u> E

TYPE MONUMENT MAG/WASHER
 ON SURFACE - ~~BELOW~~ ON _____
 OFFSET C PAVEMENT 0.4' ~~±~~ : RT
9.8' TO RT EDGE PAVEMENT
 STATION: 1241+01.01

HORZ. DATUM: NAD83 2011 GEOID: NAVD88 2012A
 GRID: NORTHING: 534236.623 EASTING: 1827868.631



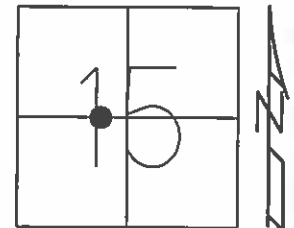
RECORD: P.O.T.
 $\Delta = 33^{\circ}56'56''$
 STA 24+84.70
 FD R.R. SPIKE
 7/15/85, CL
 7-9-02
 12-05-02, DCH
 DNF
 5-22-14, EBW
 SET MAG/WASHER
 REF73
 6-11-14, JLL
 FD MAG/WASHER
 REF73
 2-27-17, JFO
 5-29-18, JMR
 SET MAG/WASHER
 1-8-19, JFO



O.D.O.T. DISTRICT 2 SURVEY OFFICE (USE ONLY)

PERSONNEL _____ REFERENCE NO. 73 SHEET 16 OF 17
 NOTES HOFFMAN DATE 7-15-85 ROUTE SR 18
 H.C. LOEHRKE WEATHER CLEAR COUNTY SENECA
 R.C. BARNHISEL TEMP. 80°F TOWNSHIP SENIPIO
 _____ SECTION 15
 _____ T 2 N R 16 E

TYPE MONUMENT RR. SPIKE
~~ON SURFACE~~ - BELOW 3"
~~LEFT~~ - Q PAV'T - RIGHT 0.4'
9.8' TO RT EDGE PAVEMENT
 S.L.M. 1243+27.23



Grid: Northing: 534236.5960 Easting: 1827868.6880

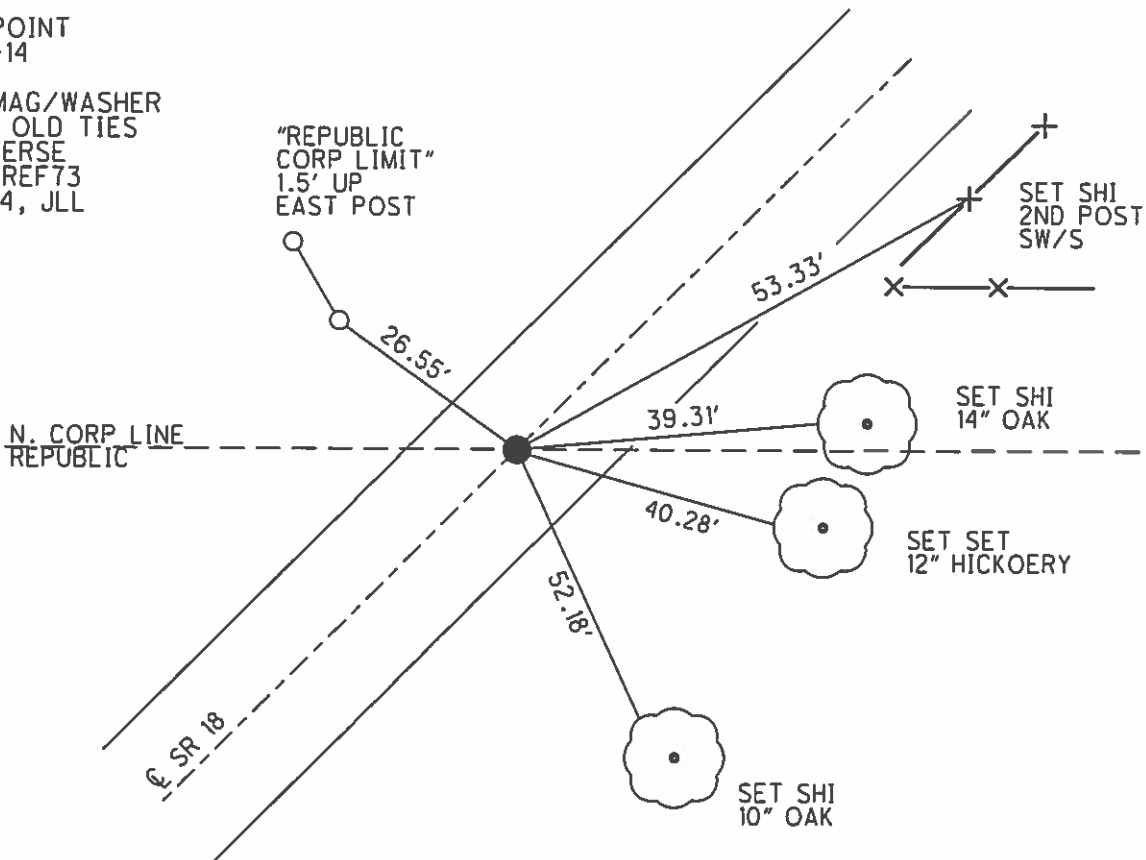
RECORD:
 P.O.T. 33°56'56"
 STA 24+84.70

FD RR. SPIKE
 7-9-02, DCH

PREVENTIVE MAINTENANCE
 CHIP & SEAL 2002
 EXISTING POINT UNCOVERED
 DATE: 12-05-02

DNF POINT
 5-22-14

SET MAG/WASHER
 FROM OLD TIES
 & INVERSE
 GPS, REF73
 6-11-14, JLL



O.D.O.T. DISTRICT 2 SURVEY OFFICE

PERSONNEL

REFERENCE NO. 73

SHEET OF

NOTES Hoffman

H.C. LOEHRKE

R.C. BARNHISEL

DATE 7-15-85

WEATHER CLEAR

TEMP. 80°

ROUTE 18

COUNTY Seneca

TOWNSHIP Scipio

SECTION 15

T 2 N R 16 E

TYPE MONUMENT R.R. SPIKE

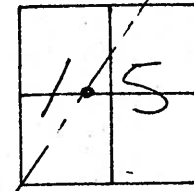
ON SURFACE - BELOW 3"

LEFT - ~~C~~ PAVT. - RIGHT 0.4'

9.8 TO RT. EDGE PAVEMENT

S.L.M. 1245+10

SET R.R. SPIKE
 @ SURFACE
 9.26-85
 SWH



Records:
 24+84.70
 P.O.T.

"Welcome To
 Republic"

N. CORP. LINE
 Republic

~~52.68~~
 GONE
 Set shi w/s
 10" OAK

~~36" Highway~~
 Fd shi se/s
 GONE
 59.51

NEAR SIDE
 1' up. on Sign
 44.84'

SR 18

53.28'
 SET shi
 2nd Post
 SW/S

~~39.32~~
 set shi w/s 14" OAK
 GONE

~~40.37~~
 set shi w/s
 10" Highway
 GONE

52.19'
 set shi NW/S
 twin 10" OAK

Fd RR SPIKE
 7-9-02
 DH

Preventive Maintenance
 Chip & Seal 2002
 Existing Point Uncovered
 Date 12-05-02

O.D.O.T. DISTRICT 2 SURVEY OFFICE

PERSONNEL

REFERENCE NO. 73

SHEET OF

NOTES Hoffman

H.C. LOEHRKE

DATE 7-15-85

ROUTE 18

R.C. BARNHISEL

WEATHER CLEAR

COUNTY Seneca

TEMP. 80°

TOWNSHIP Scipio

SECTION 15

T R

TYPE MONUMENT R.R. SPIKE

Set R.R. SPIKE

~~ON SURFACE - BELOW~~ 3"

@ surface

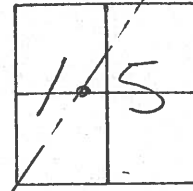
~~LEFT - PAV'T. - RIGHT~~ 0.4'

9-26-85

9.8 TO RT. EDGE PAVEMENT

SWH

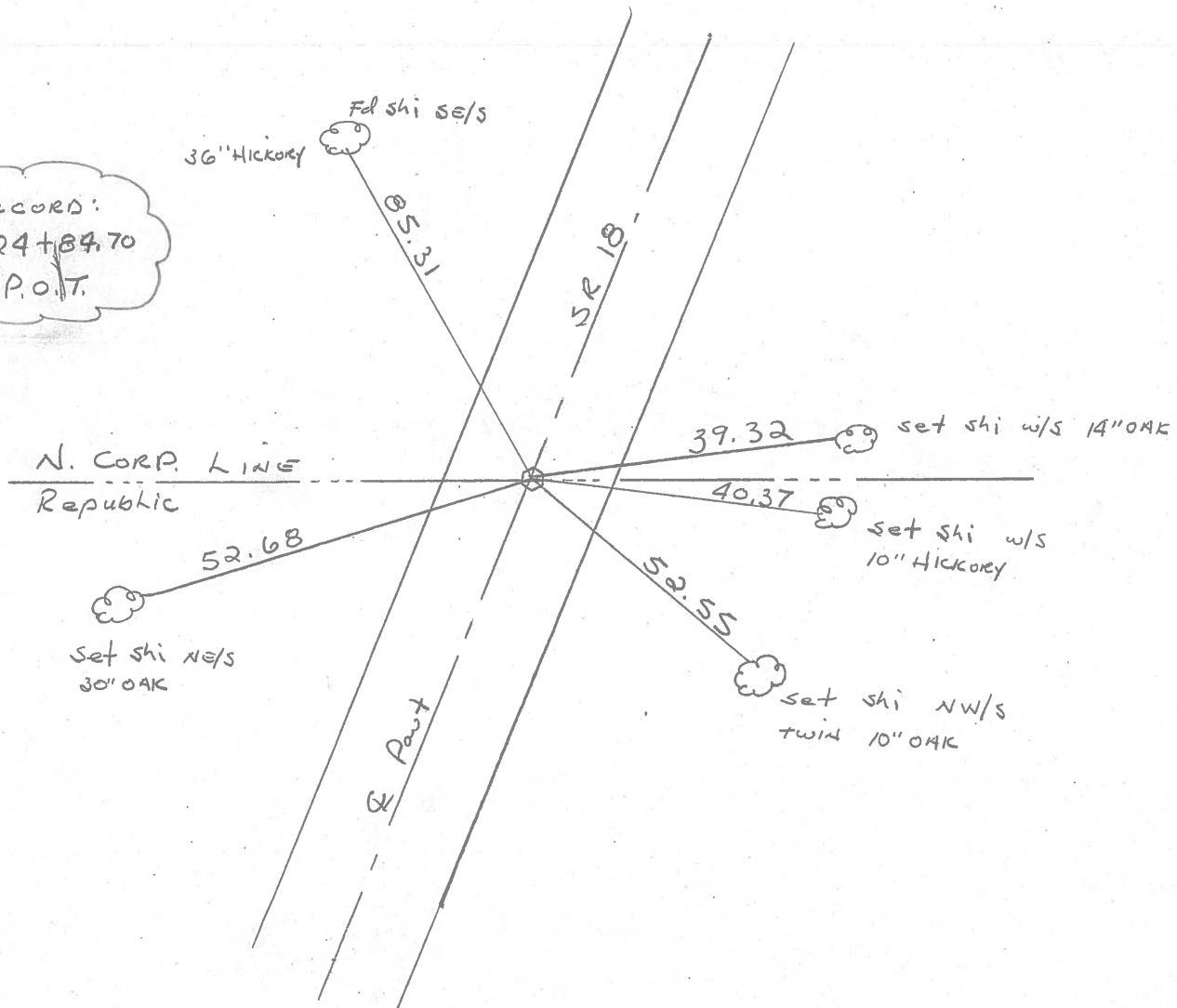
S.L.M. 1245+10



RECORD:

24+84.70

P.O.T.



PERSONNEL TITLE PERSONNEL TITLE

COUNTY Seneca

DATE 11/15/72

Ash

Cronin

Ripole

Anderson

S. R. # 18 (S.H. 267)

WEATHER overcast-snow

SEC. '4'

TEMP. 32°

DESCRIPTION Ties for Control Points - Republic to Sandusky Co. Line JOB NO. _____

LEFT

CENTER LINE

RIGHT

74

$\Delta = 00^\circ 29' Rf.$

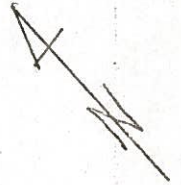
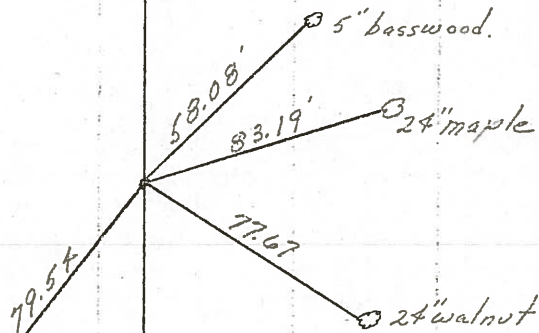
P.I.

30+83.56

Fd. R.R. spike $1\frac{1}{2}$ "
below surface, P.K.
nail & shiner atop &
on surface

Scipio Twp.
Sec. 15

chisel
marks in steel fence post



Tied 6/16/71

73

20

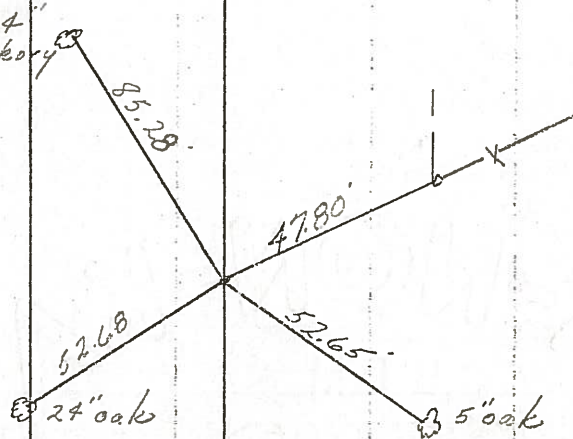
P.O.T.

N. Corp. Line - Republic

24+84.70

Fd. R.R. spike 3" below
surface. P.K. nail & shiner
atop & on surface

Scipio Twp.
Sec. 15



Tied 6/16/71

PERSONNEL TITLE PERSONNEL TITLE

COUNTY Seneca

DATE 11/15/72

Ash

Cronin

Ripple

Anderson

S. R. #1B (S.H. 267)

WEATHER overcast-snow

SEC. '4'

TEMP. 32°

DESCRIPTION

Ties for Control Points - Republic to Spindusky Co. Line

JOB NO.

LEFT

CENTER LINE

RIGHT

74

Scipio Twp.
Sec. 15

$\Delta = 00^\circ 29' R.$

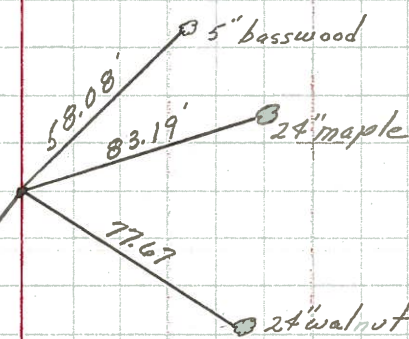
P.I.

30+83.56

Fd. R.R. spike $2\frac{1}{2}$ "
below surface, P.K.
nail & shiner atop,
on surface

chisel
mark in steel fence post

Tied 6/16/71



73

20

Scipio Twp.
Sec. 15

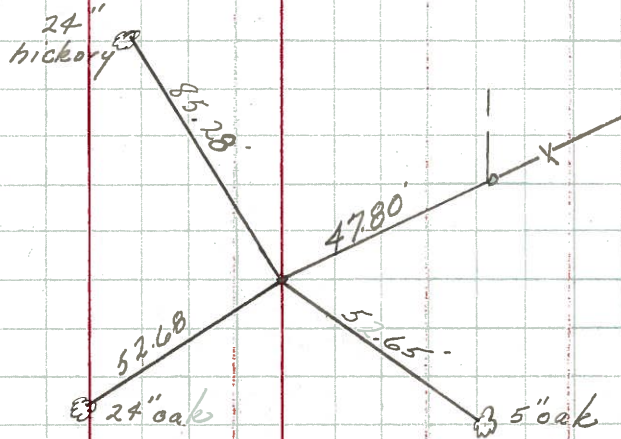
P.O.T.

N. Corp. Line - Republic

24+84.70

Fd. R.R. spike 3' below
surface, P.K. nail & shiner
atop, on surface

Tied 6/16/71

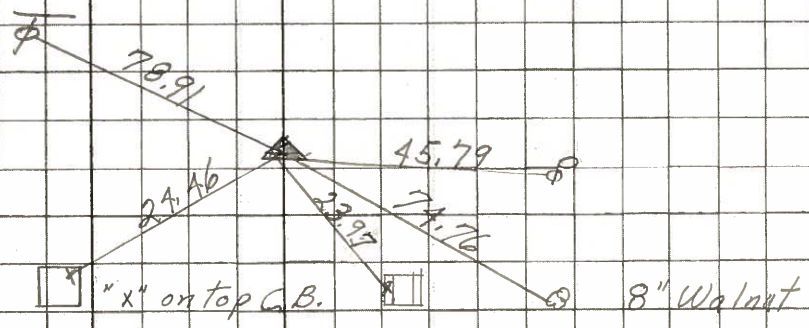


PERSONNEL TITLE PERSONNEL TITLE COUNTY Seneca DATE 11-8-68
Schneider Potts
Mosser _____ S. R. 18 WEATHER Cloudy
Barbour _____ SEC. Republic-San Co. Line TEMP. 40°
Redding _____
 DESCRIPTION Ties for Control Points JOB NO. _____

76

73+02.28
 $\Delta = 0^\circ 29' \text{ Rt.}$
 P. K. Nail

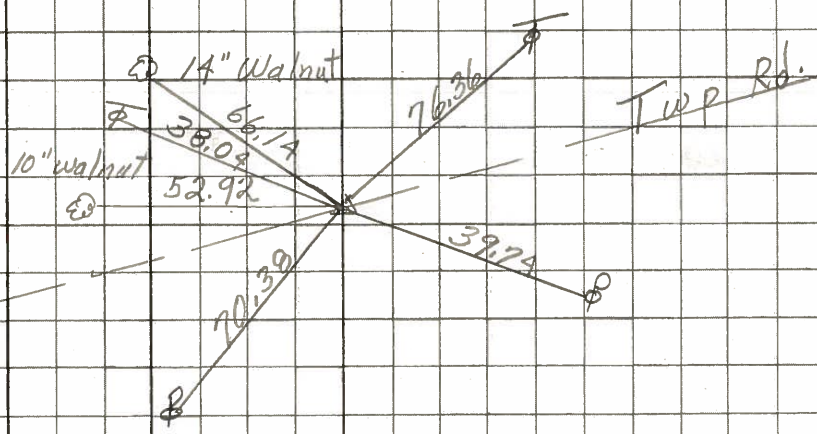
8166



75

57+07.53
 R.P. Spk.
 $\Delta = 0^\circ 11' \text{ Lt.}$

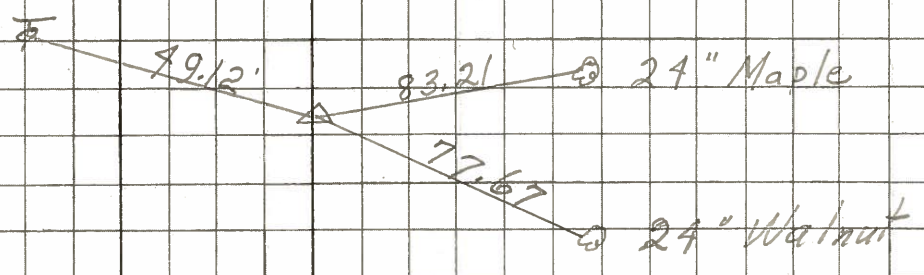
8165



74

30+83.56
 $\Delta = 0^\circ 29' \text{ Rt}$
 P. K. Nail

8164



73

P.O.T.
 North Corp Line
 24+84.7
 P. K. Nail

8163

