

O.D.O.T. DISTRICT 2 SURVEY OFFICE (USE ONLY)

PERSONNEL

REFERENCE NO. 74

SHEET 3 OF 28

NOTES TRENKA

DATE 5-29-18

ROUTE SR 18

H.C. RHOADES

WEATHER SUNNY

COUNTY SENECA

R.C. TRENKA

TEMP. 85°

TOWNSHIP SCIPIO

SECTION 15

DWG BY JAMES PID 101281

T 2 N R 16 E

TYPE MONUMENT P.K./WASHER

ON SURFACE - ~~BELOW~~ ON

OFFSET 0.2' LT : RT

10.3' TO LT EDGE PAVEMENT

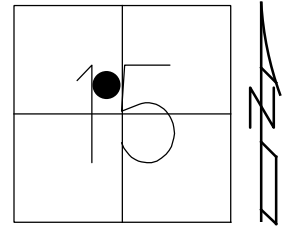
STATION: 1246+97.10

HORIZ.DATUM: NAD83 2011

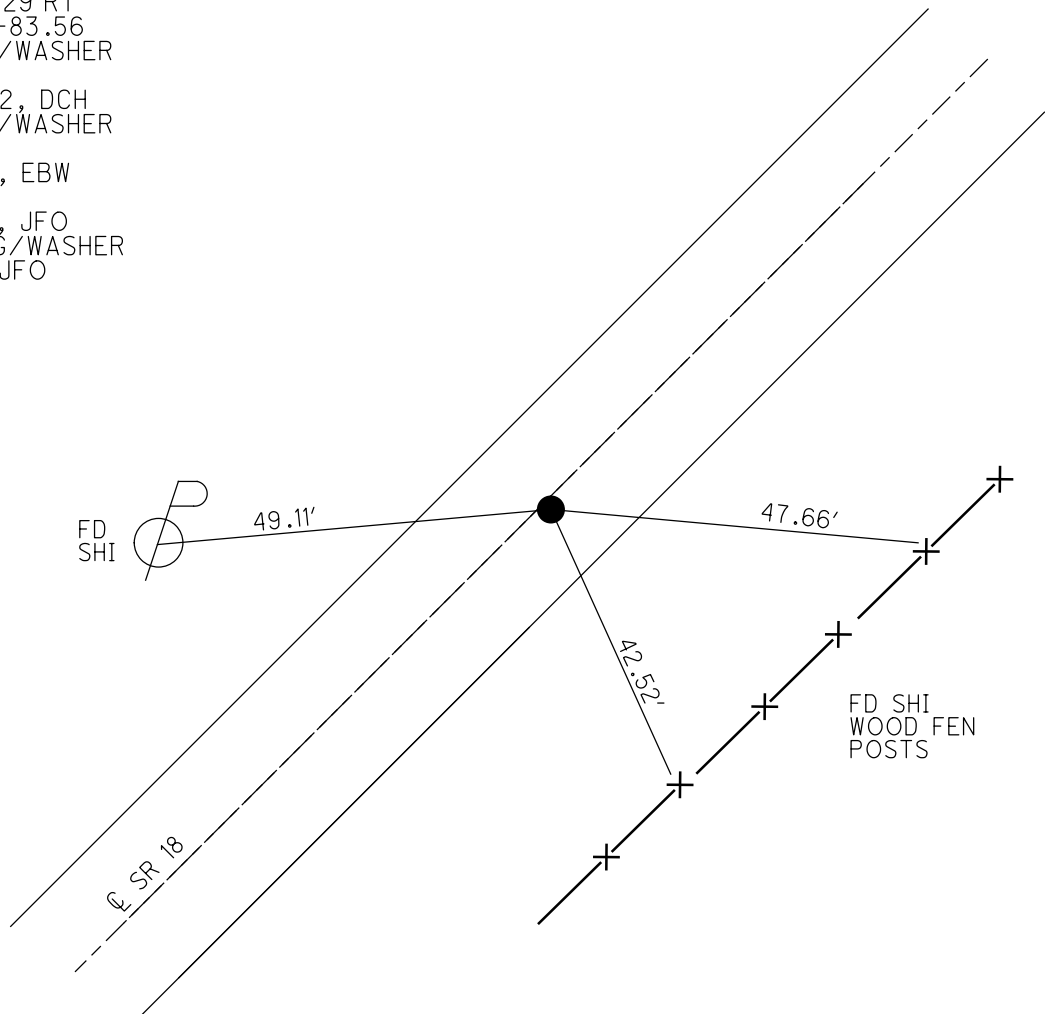
GEOID: NAVD88 2012A

GRID: NORTHING: 534731.062

EASTING: 1828201.582



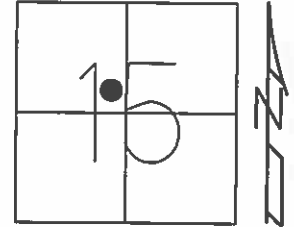
RECORD: P.I.
 $\Delta = 00^\circ 29' RT$
 STA 30+83.56
 FD P.K./WASHER
 7-9-02
 12-05-02, DCH
 FD P.K./WASHER
 REF74
 5-29-14, EBW
 REF74
 2-27-17, JFO
 SET MAG/WASHER
 1-8-19, JFO



O.D.O.T. DISTRICT 2 SURVEY OFFICE (USE ONLY)

PERSONNEL _____ REFERENCE NO. 74 SHEET 17 OF 17
 NOTES HOFFMAN DATE 7-15-85 ROUTE SR 18
 H.C. LOEHRKE WEATHER CLEAR COUNTY SENECA
 R.C. BARNHISEL TEMP. 80°F TOWNSHIP SCIPIO
 _____ SECTION 15
 _____ T 2 N R 16 E

TYPE MONUMENT PK/WASHER
 ON SURFACE - ~~BELOW~~ ON _____
~~LEFT~~ - CL PAV'T - RIGHT 0.2'
10.3" TO LT EDGE PAVEMENT
 S.L.M. 1249+23.33



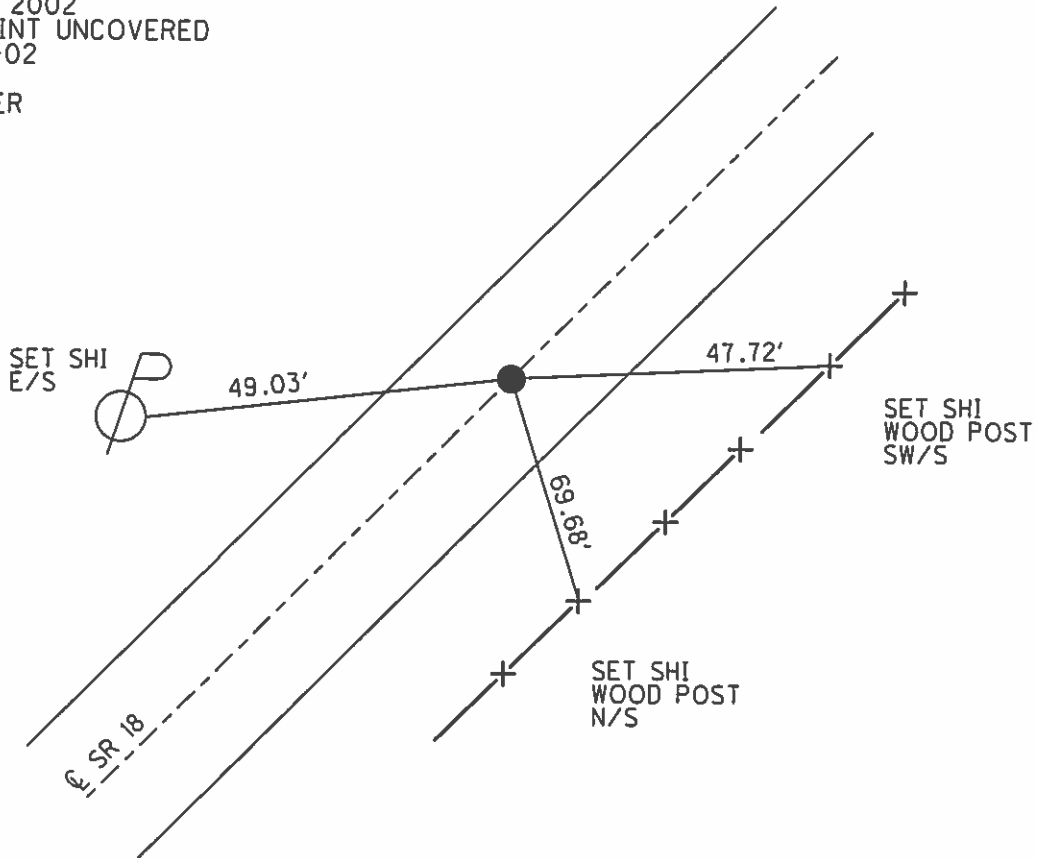
Grid: Northing: 534731.1102 Easting: 1828201.5443

RECORD:
 P.I. $\Delta=00^{\circ}29'RT$
 STA 30+83.56

FD PK/WASHER
 7-9-02, DCH

PREVENTIVE MAINTENANCE
 CHIP & SEAL 2002
 EXISTING POINT UNCOVERED
 DATE: 12-05-02

FD PK/WASHER
 @ SURFACE
 GPS, REF74
 5-29-14



O.D.O.T. DISTRICT 2 SURVEY OFFICE

PERSONNEL _____

REFERENCE NO. 74

SHEET _____ OF _____

NOTES Hoffman

H.C. LOHRKE

R.C. BARNHISEL

DATE 7-15-85

WEATHER CLEAR

TEMP. 80°

ROUTE 18

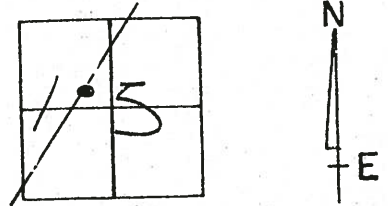
COUNTY SENECA

TOWNSHIP Scipio

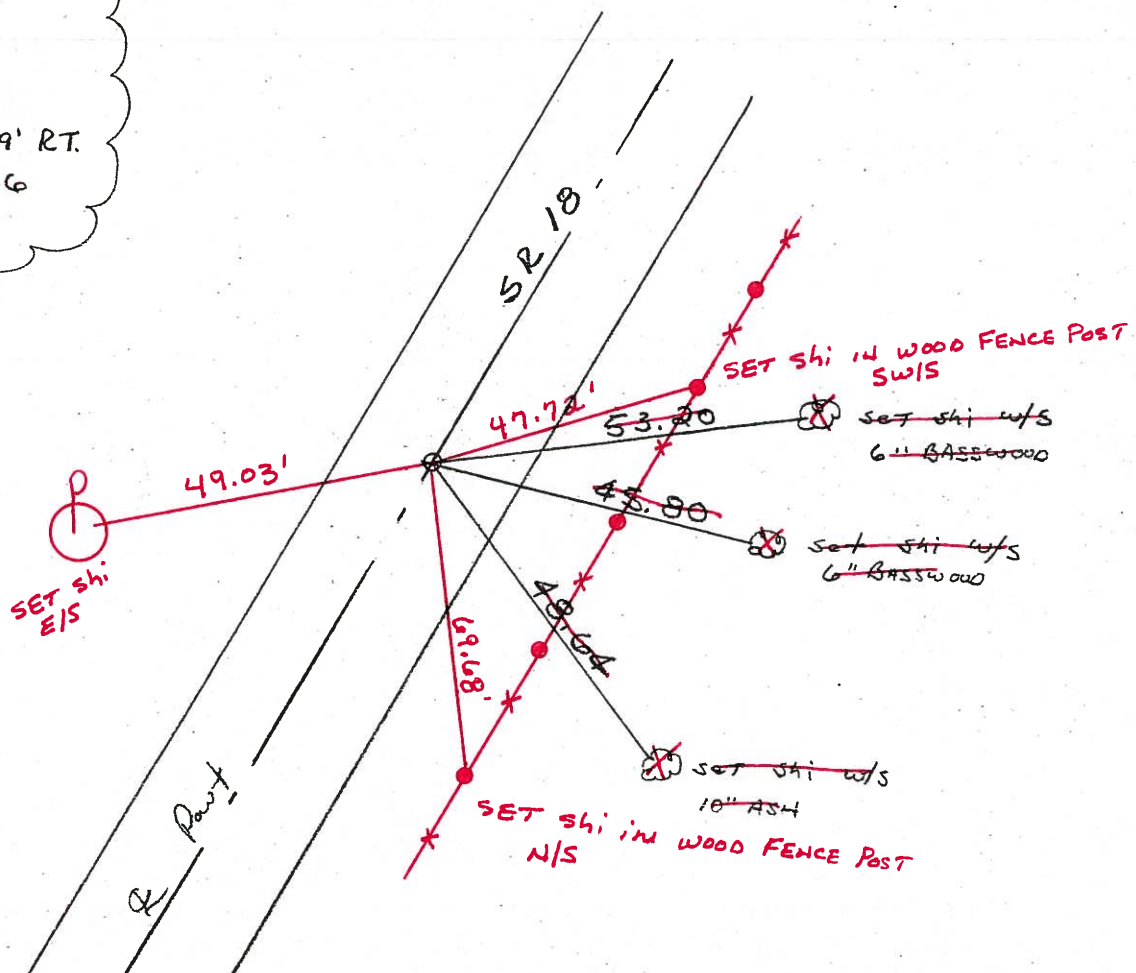
SECTION 15

T 2 N R 14 E

TYPE MONUMENT P.K. Set P.K./WASHER
 ON SURFACE BELOW yes 9-26-85 SWH
~~LEFT-C~~ PAV'T. - RIGHT 0.2'
10.3 TO RT. EDGE PAVEMENT
 S.L.M. 1251+08



RECORD:
 P.I.
 $\Delta = 0^\circ - 29' \text{ RT.}$
 $30 + 83.56$



Fd PK/Washer
 7-9-02
 DH

Preventive Maintenance
 Chip & Seal 2002
 Existing Point Uncovered
 Date 12-05-02

O.D.O.T. DISTRICT 2 SURVEY OFFICE

PERSONNEL _____

REFERENCE NO. 74

SHEET _____ OF _____

NOTES Hoffman

H.C. LOSHRKE

R.C. BARNHISEL

DATE 7-15-85

WEATHER CLEAR

TEMP. 80°

ROUTE 18

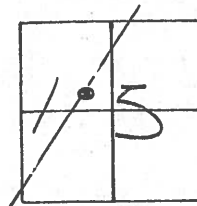
COUNTY SENECA

TOWNSHIP Scipio

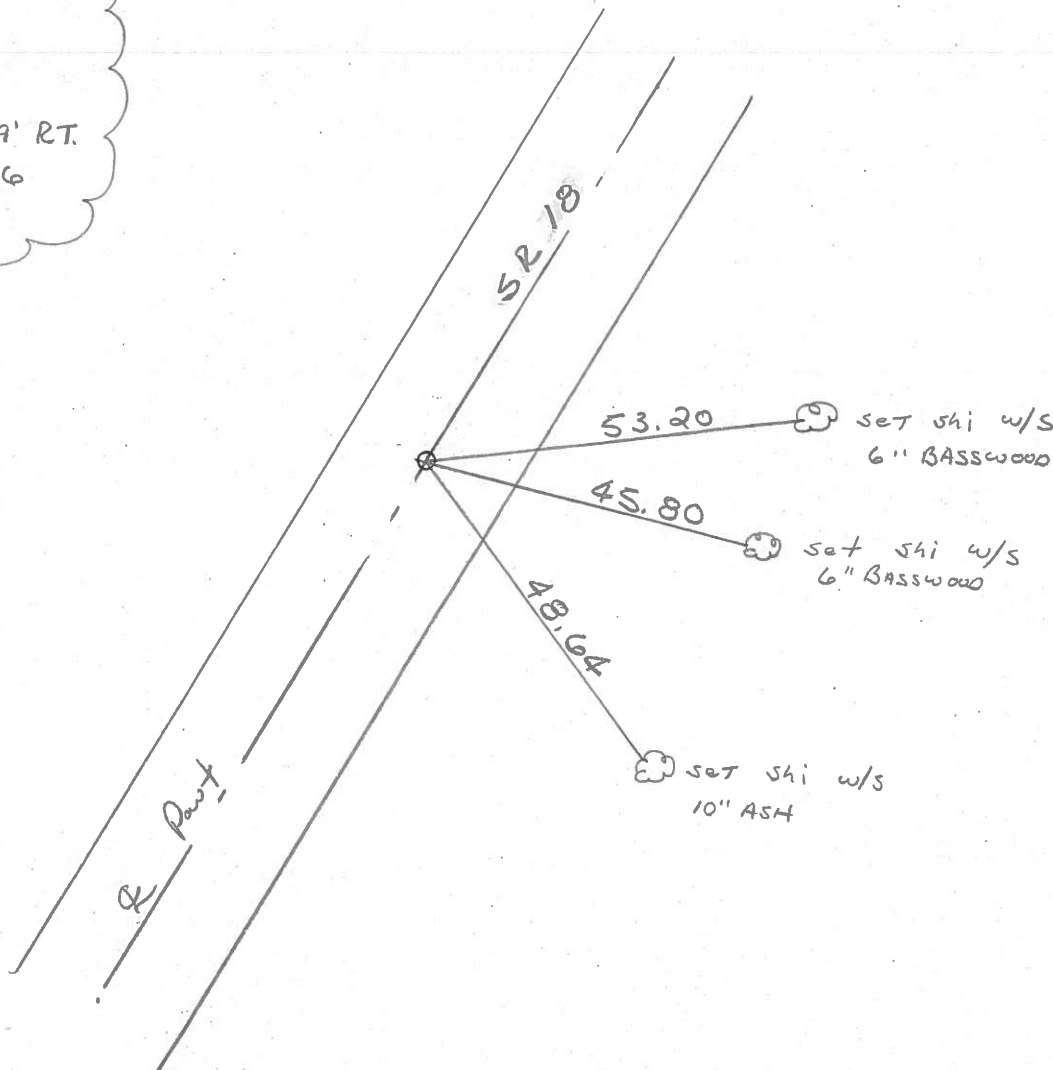
SECTION 15

T _____ R _____

TYPE MONUMENT P.K. Set P.K./WASHER
 ON SURFACE BELOW yes 9-26-85 SWH
~~LEFT-TO-PAV'T.~~ - RIGHT 0.2'
10.3 TO RT. EDGE PAVEMENT
 S.L.M. 1251+08



RECORD:
 P.I.
 $\Delta = 0^{\circ} - 29'$ RT.
 30+83.56



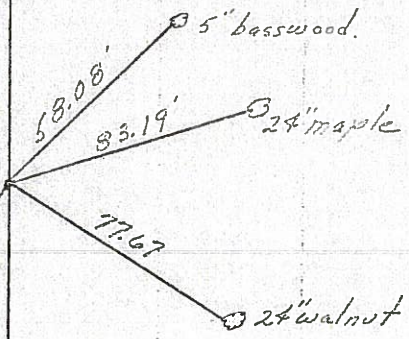
PERSONNEL	TITLE	PERSONNEL	TITLE	COUNTY	DATE
Ash				Seneca	11/15/72
Cronin				S. R. #18 (S.H. 267)	WEATHER overcast-snow
Ripple				SEC. 4	TEMP. 32°
Anderson				DESCRIPTION Ties for Control Points - Republic to Sandusky Co. Line	

74

$\Delta = 00^\circ 29' Rf.$
 P.I.
 30+83.56
 Fd R.R. spike $1\frac{1}{2}$ "
 below surface. P.K.
 nail & shiner atop &
 on surface

Scipio Twp.
Sec. 15

chisel
mark in steel fence post

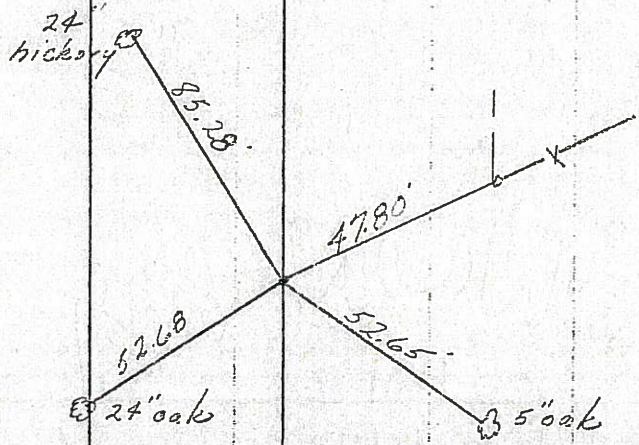


73

20

P.O.T.
 N. Corp. Line - Republic
 24+84.70
 Fd R.R. spike 3" below
 surface. P.K. nail & shiner
 atop & on surface

Scipio Twp.
Sec. 15



Tied 6/16/71

PERSONNEL TITLE PERSONNEL TITLE

COUNTY Seneca

DATE 11/15/72

Ash

Cronin

Ripple

Anderson

S. R. #18 (S.H. 267)

WEATHER overcast-snow

SEC. 4

TEMP. 32°

DESCRIPTION Ties for Control Points - Republic to Sandusky Co. Line JOB NO.

LEFT

CENTER LINE

RIGHT

74

Scipio Twp. Sec. 15

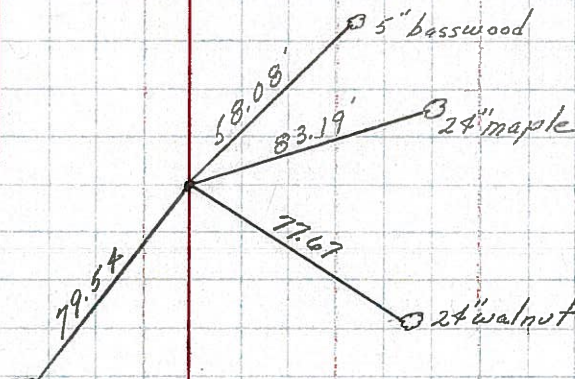
$\Delta = 00^\circ 29' R.$

P.I.

30+83.56

Fd. R.R. spike $1\frac{1}{2}$ " below surface. P.K. nail & shiner atop & on surface

chisel mark in steel fence post



Tied 6/16/71

73

20

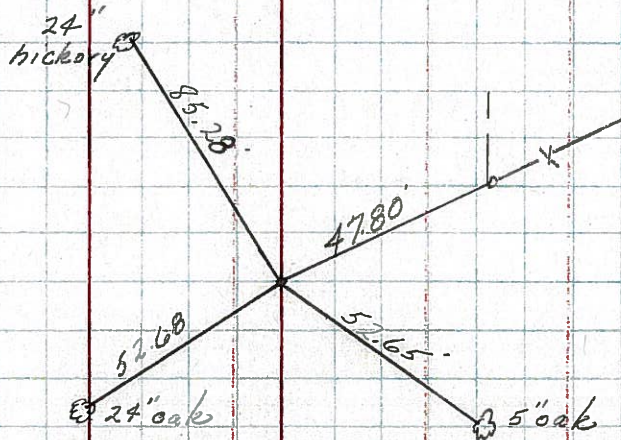
Scipio Twp. Sec. 15

P.O.T.

N. Corp. Line Republic

24+84.70

Fd. R.R. spike 3" below surface. P.K. nail & shiner atop & on surface



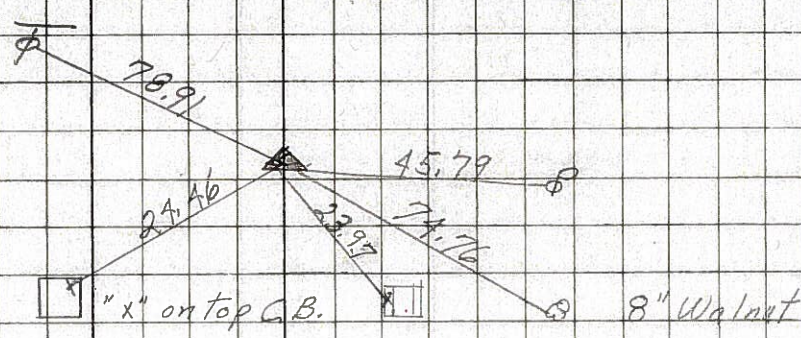
Tied 6/16/71



PERSONNEL	TITLE	PERSONNEL	TITLE	COUNTY	Seneca	DATE	11-8-68
Schneider		Potts		S. R.	18	WEATHER	Cloudy
Mosser				SEC.	Republic-San Co. Line	TEMP.	40°
Barbour				DESCRIPTION	Ties for Control Points		JOB NO.
Redding				LEFT	CENTER LINE	RIGHT	

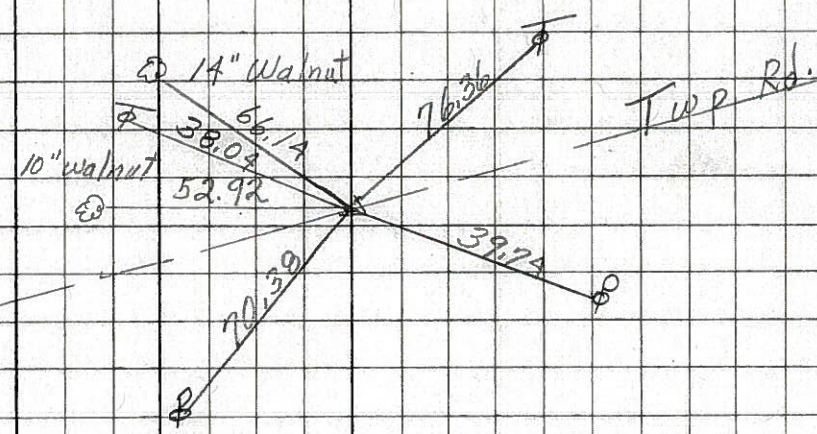
76
 73+02.28
 $\Delta = 0^\circ 29' \text{ Rt.}$
 P. K. Nail

8166



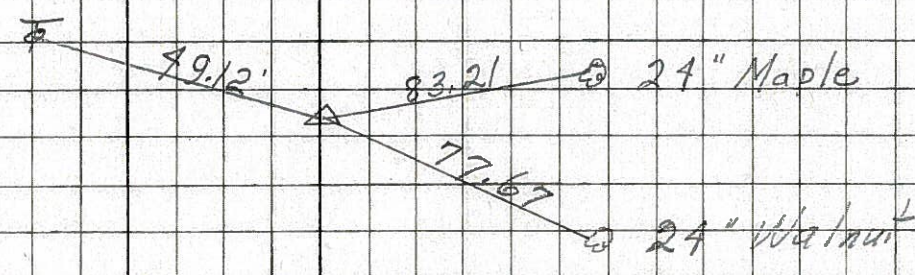
75
 57+07.53
 R.P. Spk.
 $\Delta = 0^\circ 11' \text{ Lt.}$

8165



74
 30+83.56
 $\Delta = 0^\circ 29' \text{ Rt}$
 P. K. Nail

8164



73
 P.O.T.
 North Corp Line
 24+84.7
 P. K. Nail

8163

