

O.D.O.T. DISTRICT 2 SURVEY OFFICE (USE ONLY)

PERSONNEL

REFERENCE NO. 75

SHEET 4 OF 28

NOTES TRENKA

DATE 5-29-18

ROUTE SR 18

H.C. RHOADES

WEATHER SUNNY

COUNTY SENECA

R.C. TRENKA

TEMP. 85°

TOWNSHIP SCIPPIO

SECTION 15

DWG BY JAMES PID 101281

T 2 N R 16 E

TYPE MONUMENT P.K.NAIL

ON SURFACE - ~~BELOW~~ ON

OFFSET \odot PAVEMENT ON LT : RT

- TO - EDGE PAVEMENT

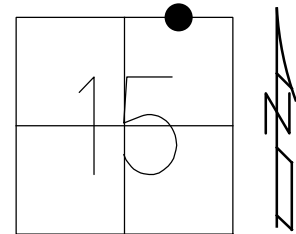
STATION: 1273+21.64

HORZ.DATUM: NAD83 2011

GEOID: NAVD88 2012A

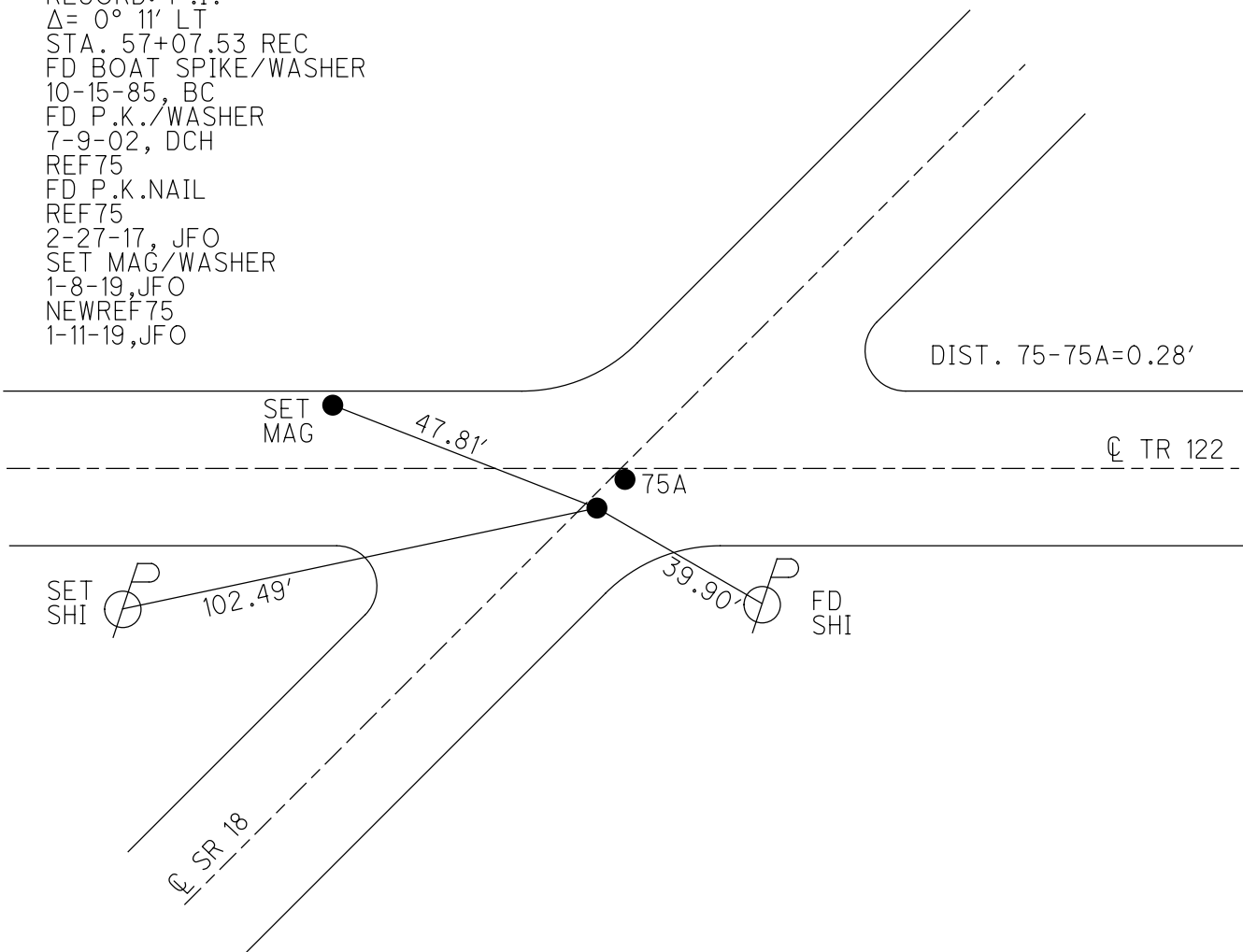
GRID: NORTHING: 536895.217

EASTING: 1829686.309



RECORD: P.I.
 $\Delta = 0^\circ 11' \text{ LT}$
 STA. 57+07.53 REC
 FD BOAT SPIKE/WASHER
 10-15-85, BC
 FD P.K./WASHER
 7-9-02, DCH
 REF 75
 FD P.K.NAIL
 REF 75
 2-27-17, JFO
 SET MAG/WASHER
 1-8-19, JFO
 NEWREF 75
 1-11-19, JFO

DIST. 75-75A=0.28'



O.D.O.T. DISTRICT 2 SURVEY OFFICE

PERSONNEL

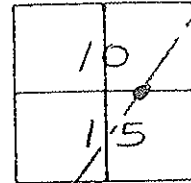
REFERENCE NO. 75 SHEET OF

NOTES CROWIN
 H.C. RIPPLE
 R.C. BARBOUR
GEYMAN

DATE 10/15/85
 WEATHER OVERCAST/WINDY
 TEMP. +53°

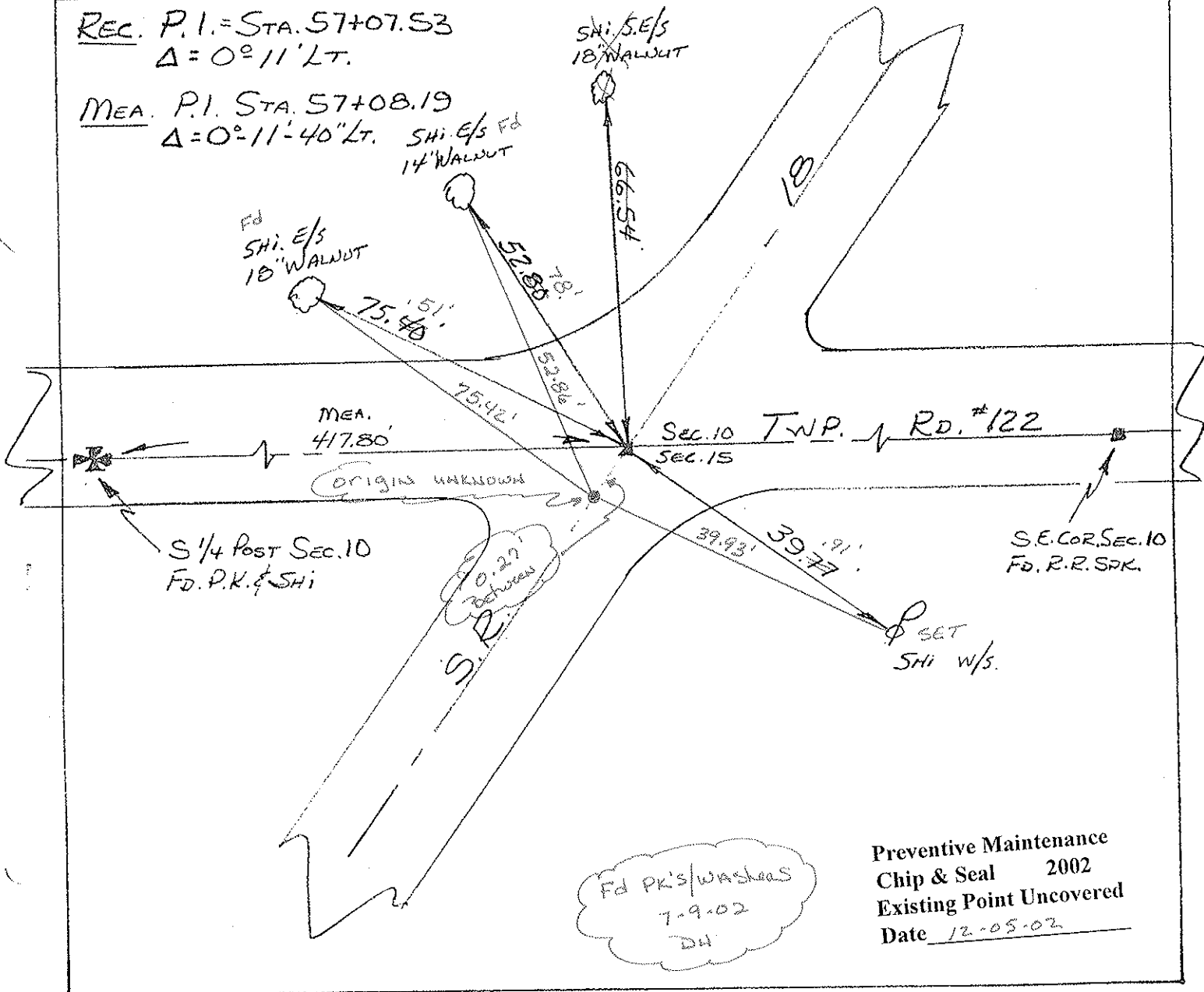
ROUTE 18
 COUNTY SENECA
 TOWNSHIP SCIPIO
 SECTION 10
 T 2 N 16 E

TYPE MONUMENT BOAT SPK. & WASHER
 ON SURFACE - BELOW YES
 LEFT - C - PAV'T. - RIGHT 0.7
 TO EDGE PAVEMENT
 S.L.M. 1277+40±



REC. P.I. = STA. 57+07.53
 $\Delta = 0^\circ 11' \text{LT.}$

MEA. P.I. STA. 57+08.19
 $\Delta = 0^\circ 11' 40'' \text{LT.}$ SHI. E/S Fd
 14" WALNUT



Fd PK's/Washers
 7-9-02
 DH

Preventive Maintenance
 Chip & Seal 2002
 Existing Point Uncovered
 Date 12-05-02

O.D.O.T. DISTRICT 2 SURVEY OFFICE

PERSONNEL

REFERENCE NO. 75

SHEET OF

NOTES CROWIN

H.C. RIPPLE

R.C. BARBOUR

GEYMAN

DATE 10/15/85

WEATHER OVERCAST/WINDY

TEMP. +58°

ROUTE 18

COUNTY SENECA

TOWNSHIP SCIPIO

SECTION 10

T R

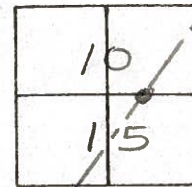
TYPE MONUMENT BOAT SPK. & WASHER

ON SURFACE - ~~BELOW~~ YES

LEFT - ~~C~~ PAV'T. - RIGHT 0.7

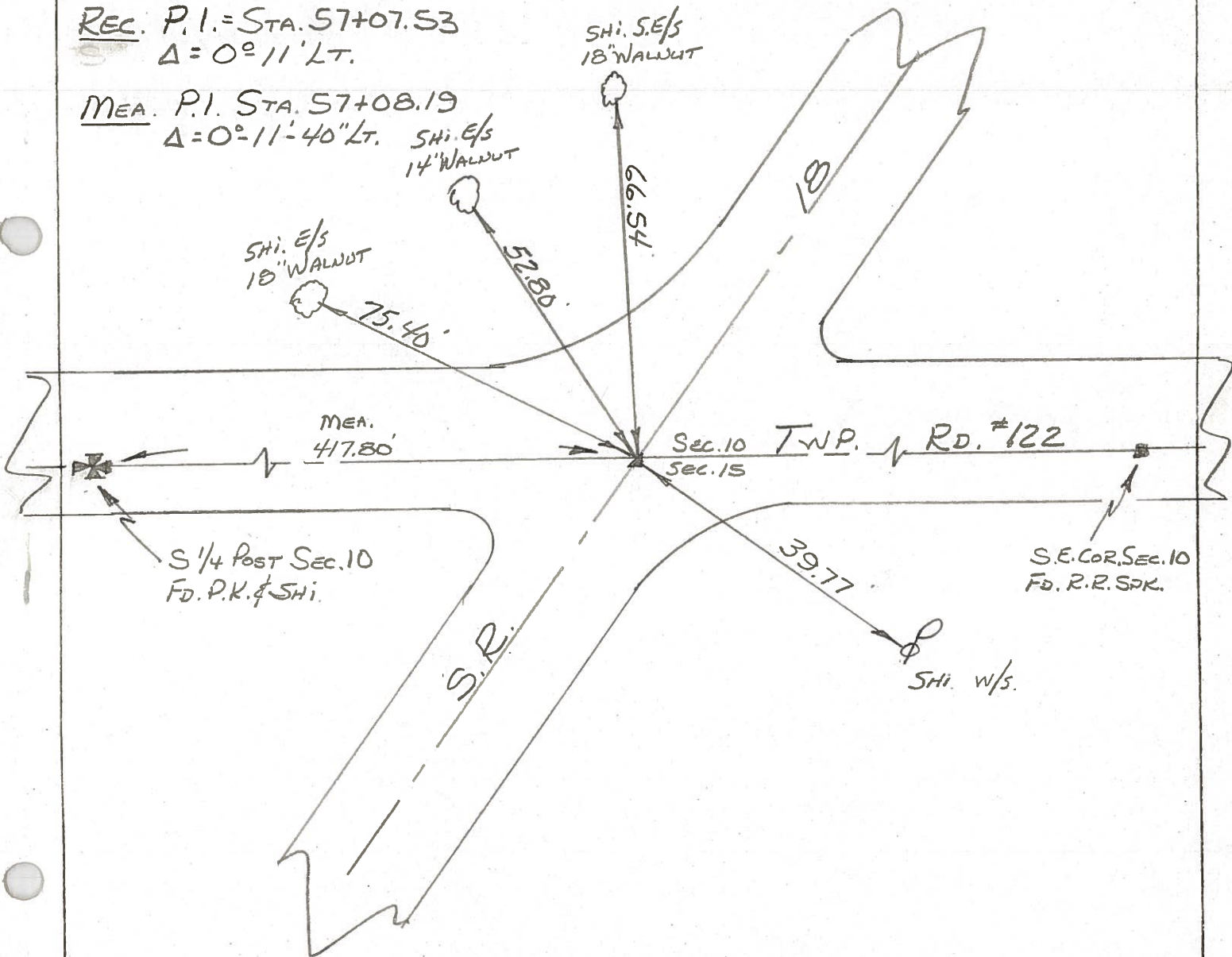
TO EDGE PAVEMENT

S.L.M. 1277+40 ±



REC. P.I. = STA. 57+07.53
Δ = 0° 11' LT.

MEA. P.I. STA. 57+08.19
Δ = 0° 11' 40" LT.



O.D.O.T. DISTRICT 2 SURVEY OFFICE

PERSONNEL _____

REFERENCE NO. 75

SHEET _____ OF _____

NOTES Hoffman

H.C. LOHRKE

DATE 7-15-85

ROUTE 18

R.C. BARNHISEL

WEATHER CLEAR

COUNTY SENECA

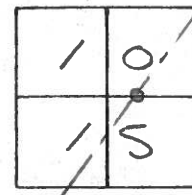
TEMP. 80°

TOWNSHIP Scipio

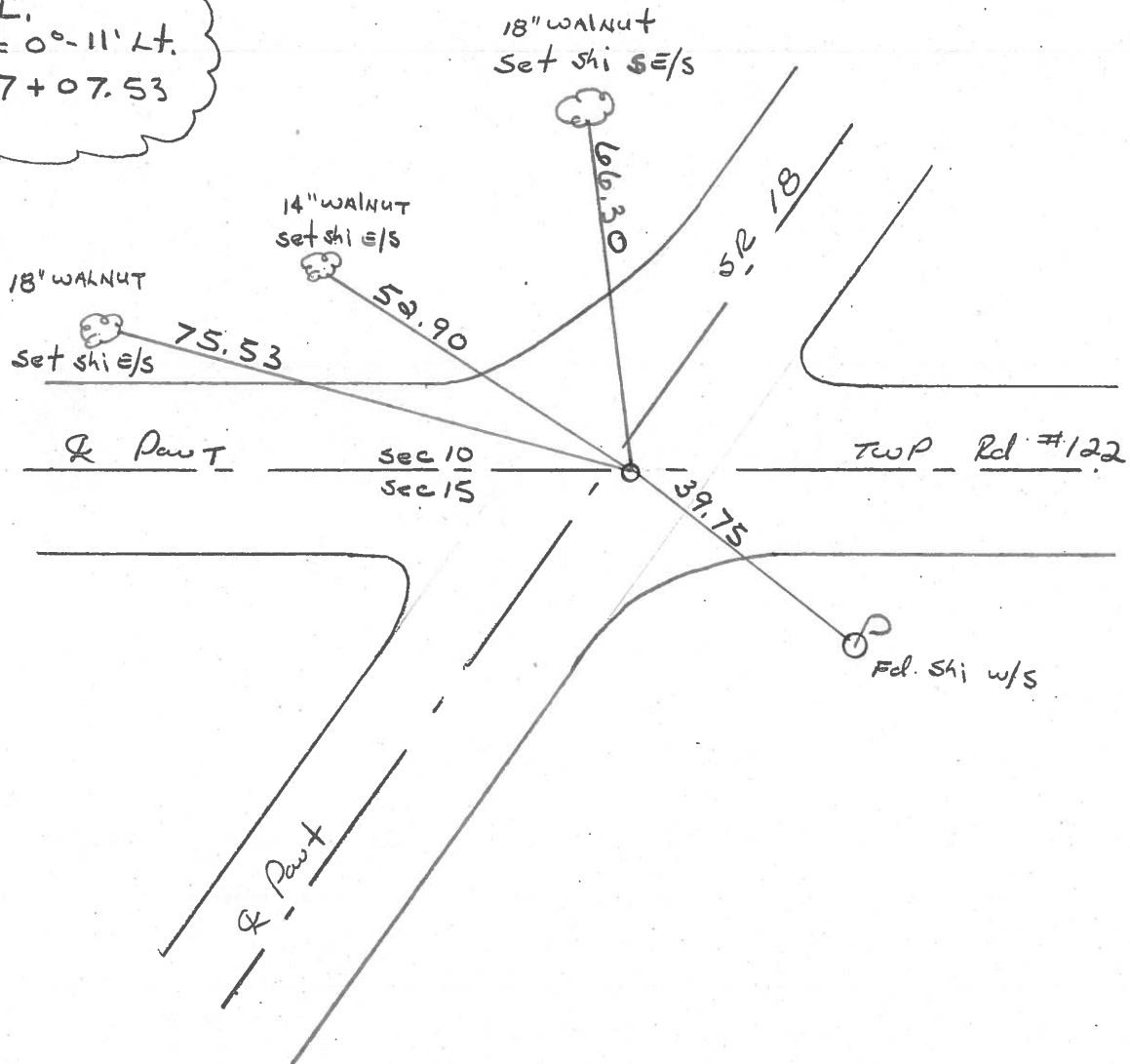
SECTION 10

T _____ R _____

TYPE MONUMENT P.K. Set P.K./WASHER
 ON SURFACE - BELOW Yes 9-26-85 SWH
~~LEFT- & PAV'T.~~ - RIGHT 0.7
 TO EDGE PAVEMENT
 S.L.M. 1277 + 40



RECORD!
 P.I.
 $\Delta = 0^\circ - 11' \text{ Lt.}$
57 + 07.53



PERSONNEL TITLE PERSONNEL TITLE

Ash
Cronin
Ripple
Anderson

COUNTY Seneca

DATE 11/16/72

S. R. # 18 (S.H. 267)

WEATHER overcast

SEC. 4

TEMP. 32°

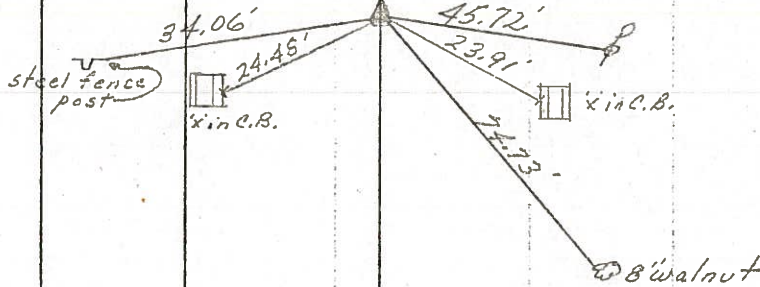
DESCRIPTION Ties for Central Points - Republic to Sandusky Co. Line JOB NO.

LEFT CENTER LINE RIGHT

76

$\Delta = 00^{\circ}29' Rt.$
P.I.
73+02.28
Fd. R.R. spike 3"
below surface. P.K.
nail & shiner at top and
on surface

Scipio Twp.
Sec. 10

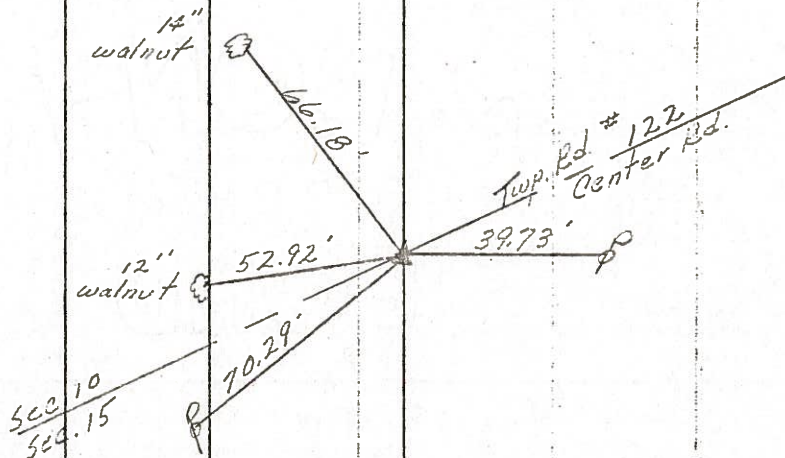


Tied 6/17/71

75

$\Delta = 00^{\circ}11' Lt.$
P.I.
57+07.53
Fd. R.R. spike 3"
below surface. P.K.
nail & shiner at top
& on the surface

Scipio Twp.



Tied 6/16/71

PERSONNEL TITLE PERSONNEL TITLE

Ash

COUNTY Seneca

DATE 11/16/72

Aronin

S. R. #18 (S.H. 267)

WEATHER overcast

Ripple

SEC. 4

TEMP. 32°

Anderson

DESCRIPTION Ties for Control Points - Republic to Sandusky Co. line JOB NO.

LEFT

CENTER LINE

RIGHT

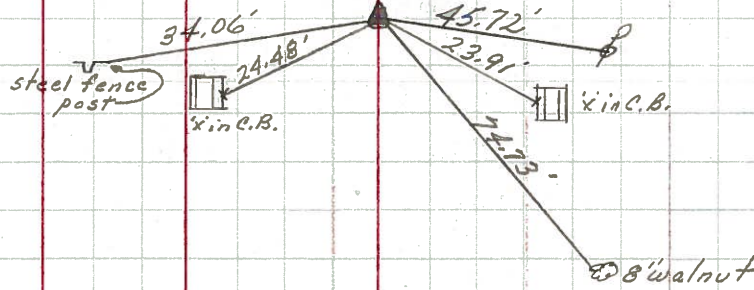
76

Scipio Twp.
Sec. 10

SEE NEW REF
2-13-84

Tied 6/17/71

$\Delta = 00^{\circ}29' Rt.$
P.I.
73+02.28
Fd. R.R. spike 3"
below surface. P.K.
nail & stimer a top and
on surface

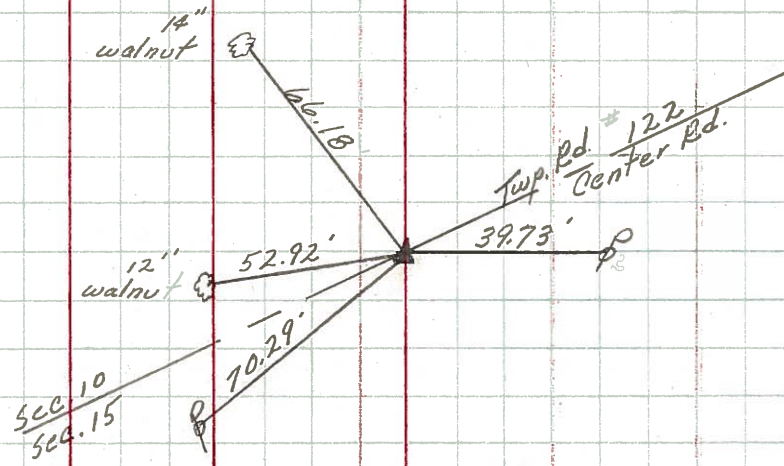


75

Scipio Twp.

Tied 6/16/71

$\Delta = 00^{\circ}11' Lt.$
P.I.
57+07.53
Fd. R.R. spike 3"
below surface. P.K.
nail & stimer a top
& on the surface

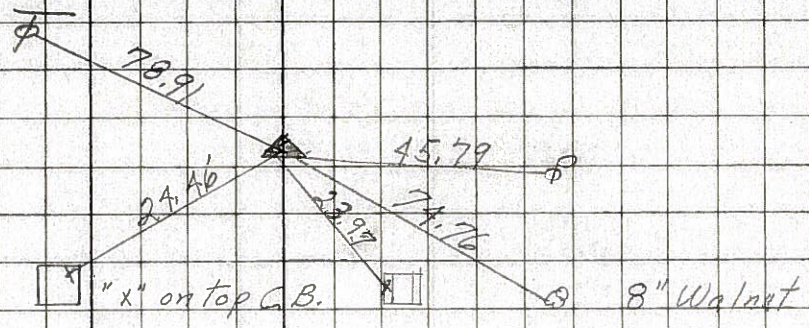


PERSONNEL	TITLE	PERSONNEL	TITLE	COUNTY	Seneca	DATE	11-8-68
Schneider		Potts		S. R.	18	WEATHER	Cloudy
Mosser				SEC.	Republic-San Co. Line	TEMP.	40°
Barbour				DESCRIPTION	Ties for Control Points		JOB NO.
Redding							

76

73+02.28
 $\Delta = 0^\circ 29' Rt.$
 P.K. Nail

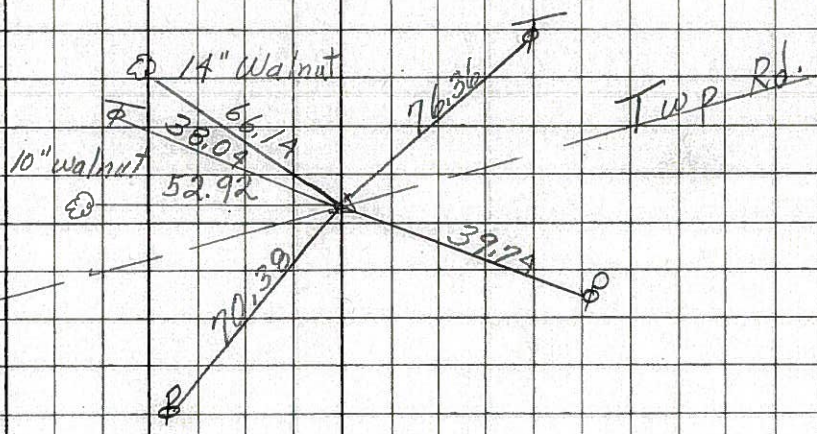
8166



75

57+07.53
 R.R. Spk.
 $\Delta = 0^\circ 11' Lt.$

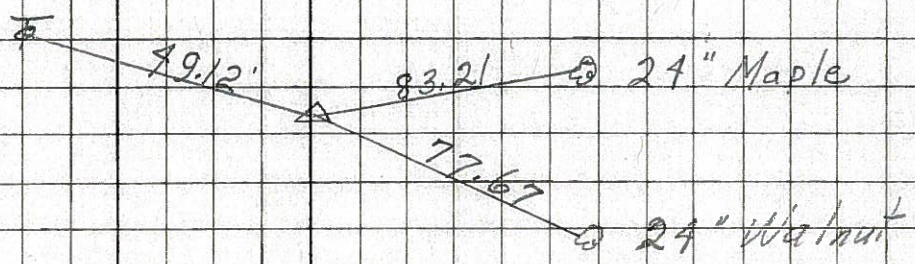
8165



74

30+83.56
 $\Delta = 0^\circ 29' Rt.$
 P.K. Nail

8164



73

P.O.T.
 North Corp Line
 24+84.7
 P.K. Nail

8163

