

O.D.O.T. DISTRICT 2 SURVEY OFFICE (USE ONLY)

PERSONNEL

REFERENCE NO. 75 A

SHEET 5 OF 28

NOTES TRENKA

DATE 5-29-18

ROUTE SR 18

H.C. RHOADES

WEATHER SUNNY

COUNTY SENECA

R.C. TRENKA

TEMP. 85°

TOWNSHIP SCIPIO

SECTION 15

DWG BY JAMES PID 101281

T 2 N R 16 E

TYPE MONUMENT P.K./WASHER

ON SURFACE - ~~BELOW~~ ON

OFFSET  $\text{C}$  PAVEMENT 0.7' ~~LT~~ : RT

- TO - EDGE PAVEMENT

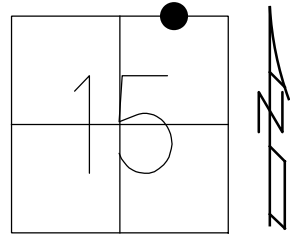
STATION: 1273+21.36

HORIZ.DATUM: NAD83 2011

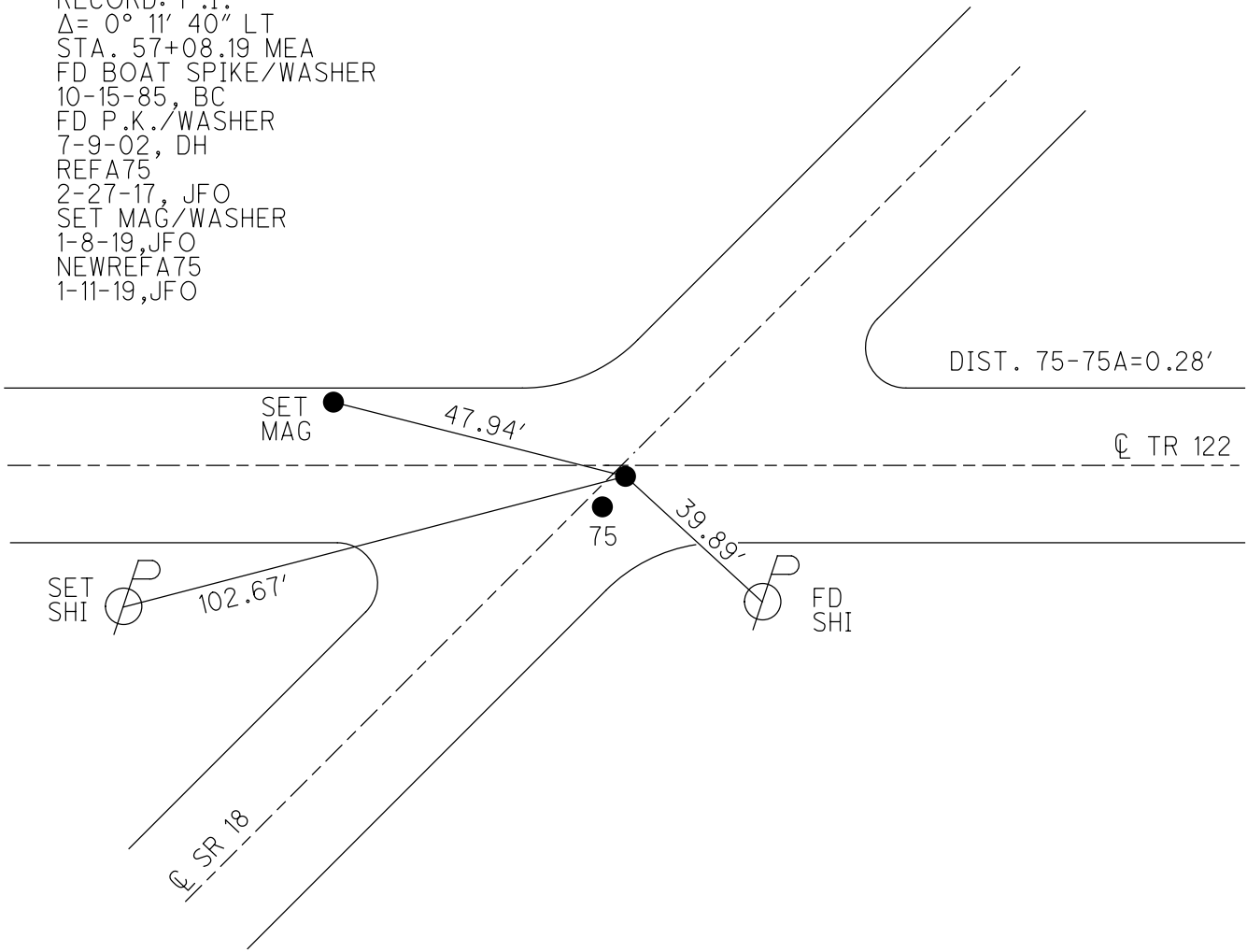
GEOID: NAVD88 2012A

GRID: NORTHING: 536895.434

EASTING: 1829686.467



RECORD: P.I.  
 $\Delta = 0^\circ 11' 40''$  LT  
 STA. 57+08.19 MEA  
 FD BOAT SPIKE/WASHER  
 10-15-85, BC  
 FD P.K./WASHER  
 7-9-02, DH  
 REFA75  
 2-27-17, JFO  
 SET MAG/WASHER  
 1-8-19, JFO  
 NEWREFA75  
 1-11-19, JFO



# O.D.O.T. DISTRICT 2 SURVEY OFFICE

PERSONNEL

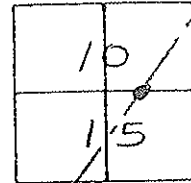
REFERENCE NO. 75 SHEET      OF     

NOTES CROWIN  
 H.C. RIPPLE  
 R.C. BARBOUR  
GEYMAN

DATE 10/15/85  
 WEATHER OVERCAST/WINDY  
 TEMP. +53°

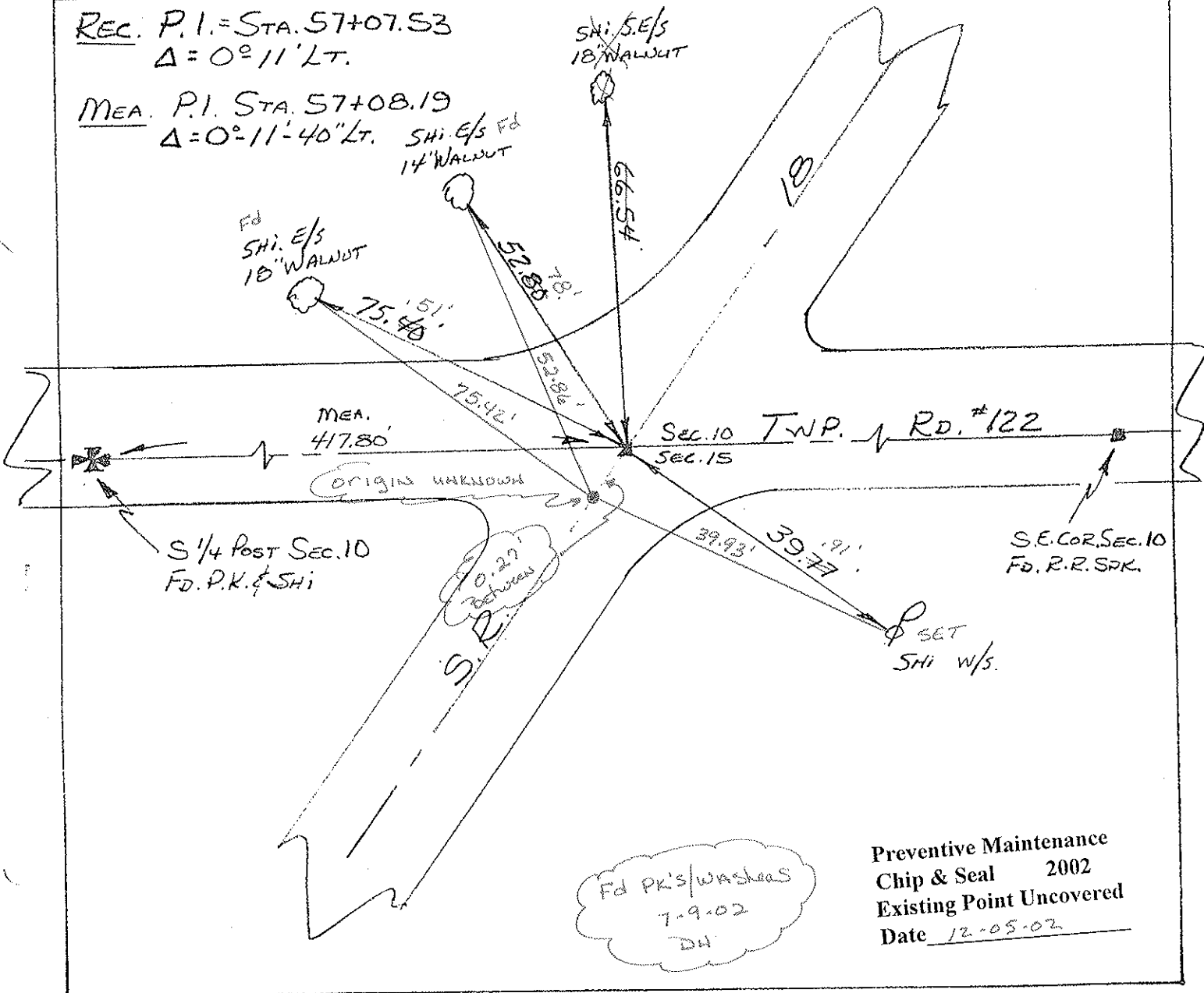
ROUTE 18  
 COUNTY SENECA  
 TOWNSHIP SCIPIO  
 SECTION 10  
 T 2 N 16 E

TYPE MONUMENT BOAT SPK. & WASHER  
 ON SURFACE - BELOW YES  
 LEFT - C - PAV'T. - RIGHT 0.7  
     TO      EDGE PAVEMENT  
 S.L.M. 1277+40±



REC. P.I. = STA. 57+07.53  
 $\Delta = 0^\circ 11' \text{LT.}$

MEA. P.I. STA. 57+08.19  
 $\Delta = 0^\circ 11' 40'' \text{LT.}$  SHI. E/S Fd  
 14" WALNUT



Fd PK's/washeas  
 7-9-02  
 DH

Preventive Maintenance  
 Chip & Seal 2002  
 Existing Point Uncovered  
 Date 12-05-02



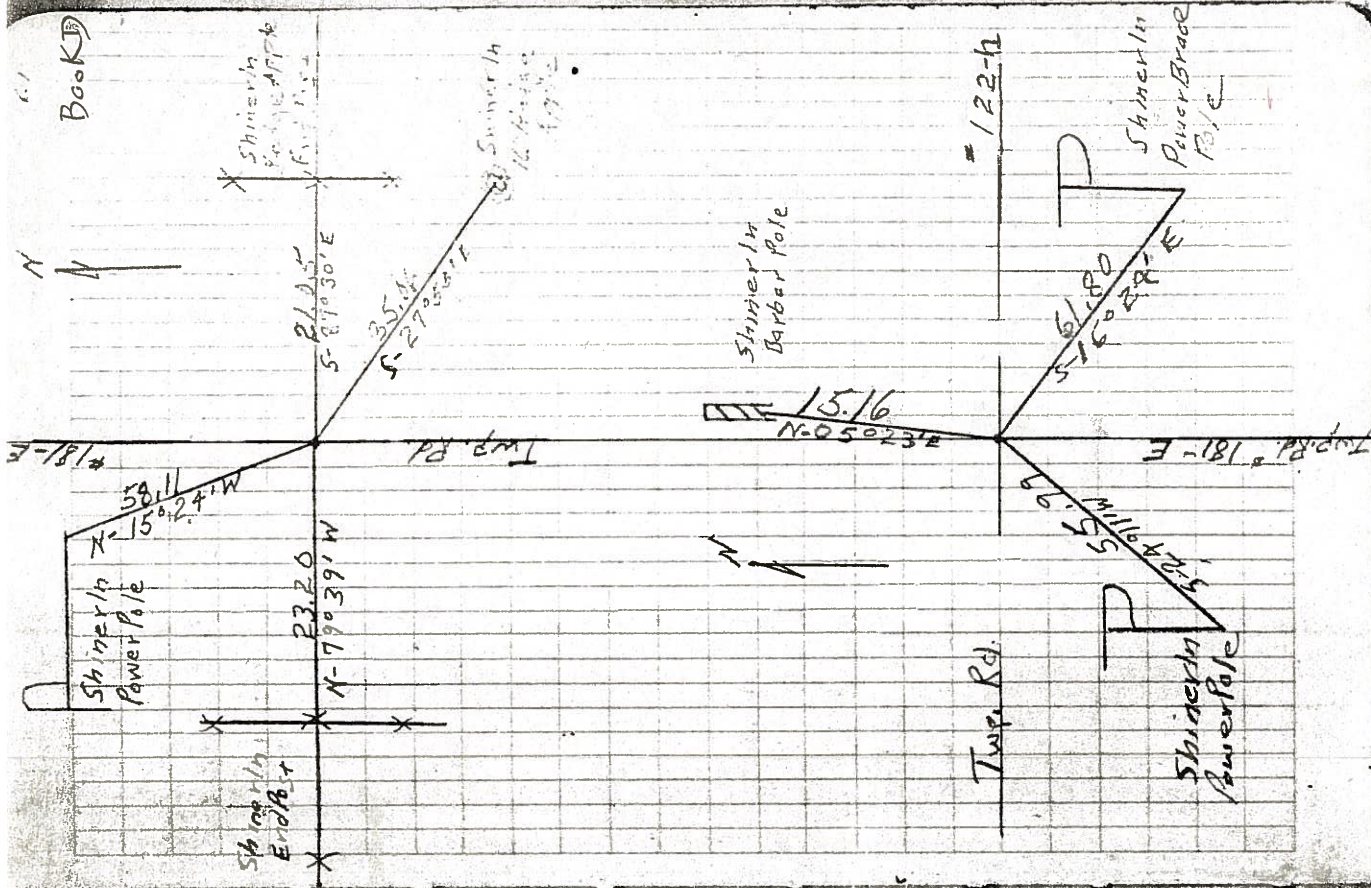
Ref. 592

found Cor. Stone 9 1/2" x 4"  
With 10" Cover. Also found  
Brick Around Stone.  
Put A 2x2 Hub With Tack  
Over High Joint.  
From Ref. # 1 in field Book 33-A  
Page 29.  
At The E/4 Post Sec 15  
In Scipio Twp.

Ref. 593

found 2x2 Hub With Iron  
Pin Drive. Down Center Of  
Hub. from Ref. # 3 in field  
Book 33-A Page 29.  
At The NE Cor. Sec 15  
In Scipio Twp.

ALSO REF # 271 IN REF BOOK 8



Book 8

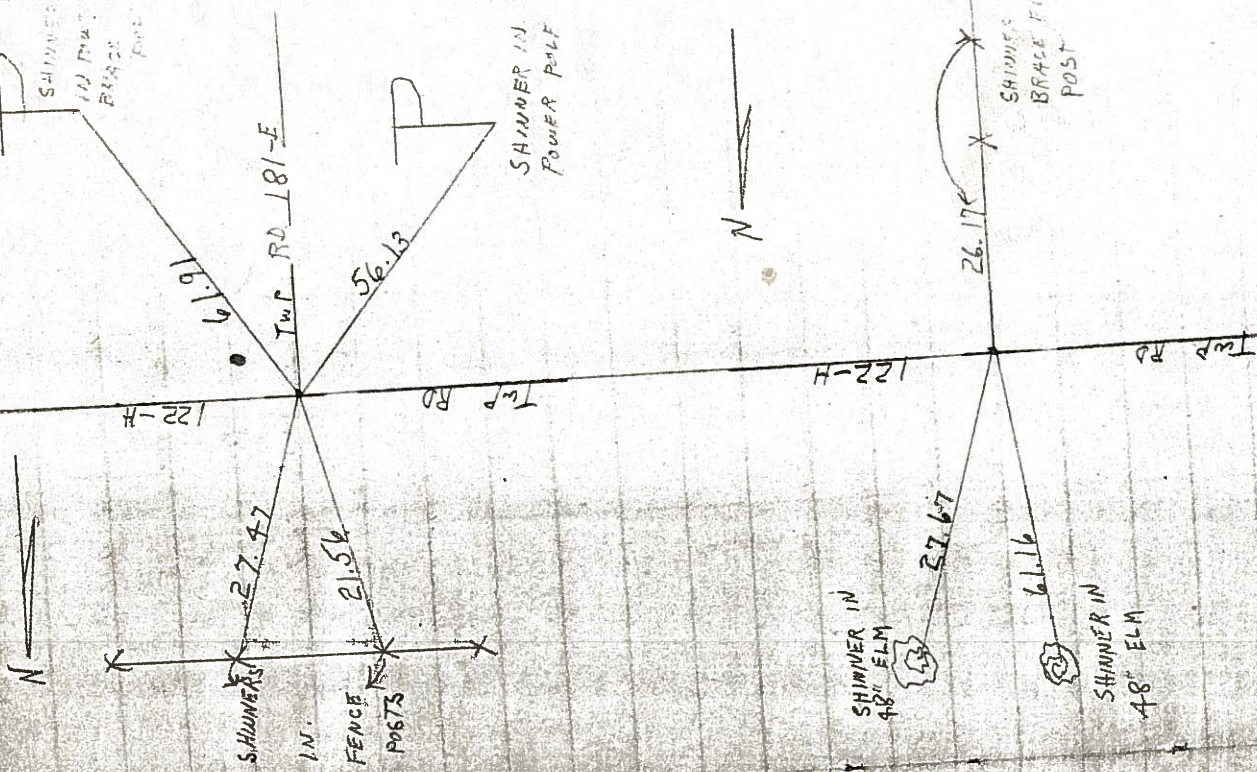


REF # 271

FOUND IRON PIN DRIVE  
THROUGH HUB FROM  
REF # 1 IN BR BOOK  
1942 AT SECTION  
CORNERS OF SEC. 10, 14  
19, 15 OF SCIPIO TWP.  
ALSO REF # 573 IN REF BOOK D

REF # 272

FOUND 2X2 HUB WITH  
STONE FROM REF # 2 IN  
BR BOOK 1942 AT NORTH  
1/4 POST OF SEC 14  
IN SCIPIO TWP. STONE  
IN SOUTH WHEEL TRACK





Field:  
G.O.  
R.W.  
S.L.

Sept 21, 1937

Fair cor.  
Gen. cor. w/ 29

Highway 181-c (N. of Tinc sec)  
Bet. sec 14 & 15 - Scipio

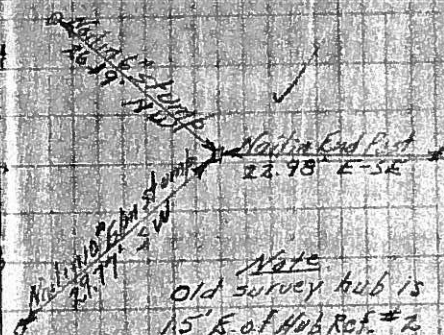
Cor. Stones  
Located - E.B.

R/W - 60'

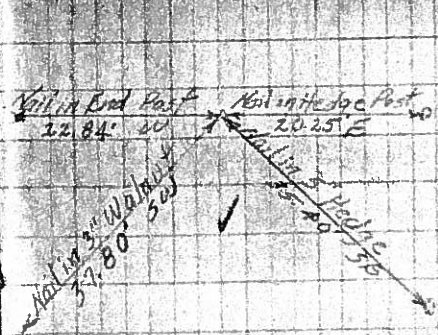
Stakes are set  
20' Rt. of E

12' T.B. Mac  
24' Rdwy.

Ref #2 - Hub & Nail. Tinc 14  
E 572 N of E 1/4 Past Sec 15  
Sta 0+00



Ref #1 - Hub over stone (concrete)  
E 1/4 Past Sec 15



Ref #3 - Hub (stone) Past 14  
Sec. cor. N.E. cor. Sec 15  
Sta. 20+73.6

