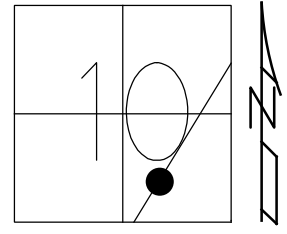


O.D.O.T. DISTRICT 2 SURVEY OFFICE (USE ONLY)

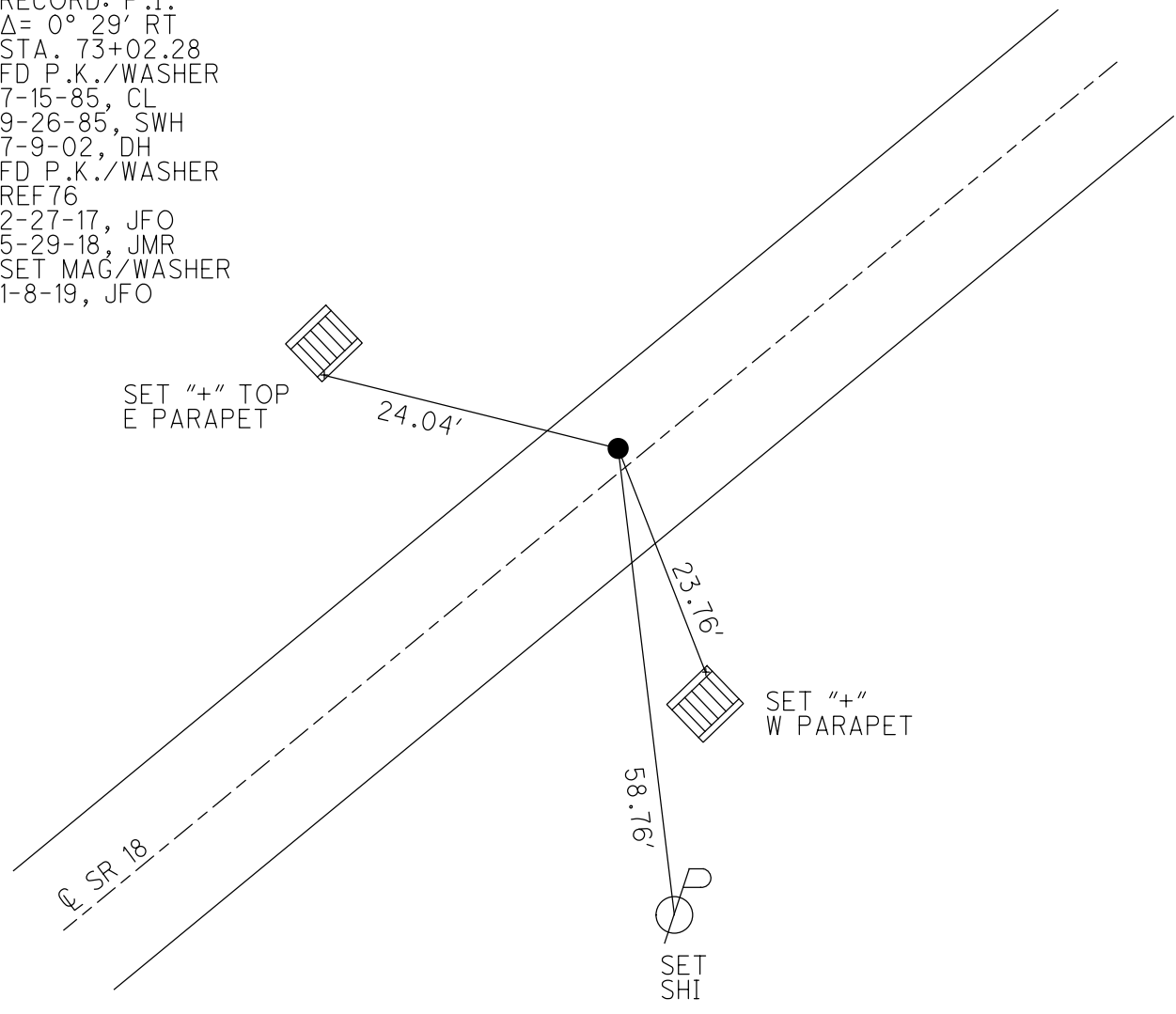
PERSONNEL _____ REFERENCE NO. 76 SHEET 6 OF 28
 NOTES TRENKA DATE 5-29-18 ROUTE SR 18
 H.C. RHOADES WEATHER SUNNY COUNTY SENECA
 R.C. TRENKA TEMP. 85° TOWNSHIP SCIPIO
 DWG BY JAMES PID 101281 SECTION 10
 T 2 N R 16 E

TYPE MONUMENT P.K./WASHER
 ON SURFACE - ~~BELOW~~ ON
 OFFSET Q PAVEMENT 0.8' LT : ~~RT~~
9.8' TO LT EDGE PAVEMENT
 STATION: 1289+15.57



HORIZ.DATUM: NAD83 2011 GEOID: NAVD88 2012A
 GRID: NORTHING: 538212.637 EASTING: 1830583.616

RECORD: P.I.
 $\Delta = 0^\circ 29' RT$
 STA. 73+02.28
 FD P.K./WASHER
 7-15-85, CL
 9-26-85, SWH
 7-9-02, DH
 FD P.K./WASHER
 REF76
 2-27-17, JFO
 5-29-18, JMR
 SET MAG/WASHER
 1-8-19, JFO



O.D.O.T. DISTRICT 2 SURVEY OFFICE

PERSONNEL _____

REFERENCE NO. 76

SHEET _____ OF _____

NOTES Hoffman

H.C. Loenkke

R.C. BARNHISEL

DATE 7-15-85

WEATHER CLEAR

TEMP. 80°

ROUTE 18

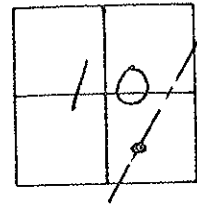
COUNTY SENECA

TOWNSHIP Scipio

SECTION 10

T. 2 N. 16 E.

TYPE MONUMENT P.K./WASHER Set P.K./WASHER
 ON SURFACE - BELOW Yes 9-26-85 SWK
 LEFT - PAV'T. - RIGHT 0.8
9.8 TO LT. EDGE PAVEMENT
 S.L.M. 1293 + 27

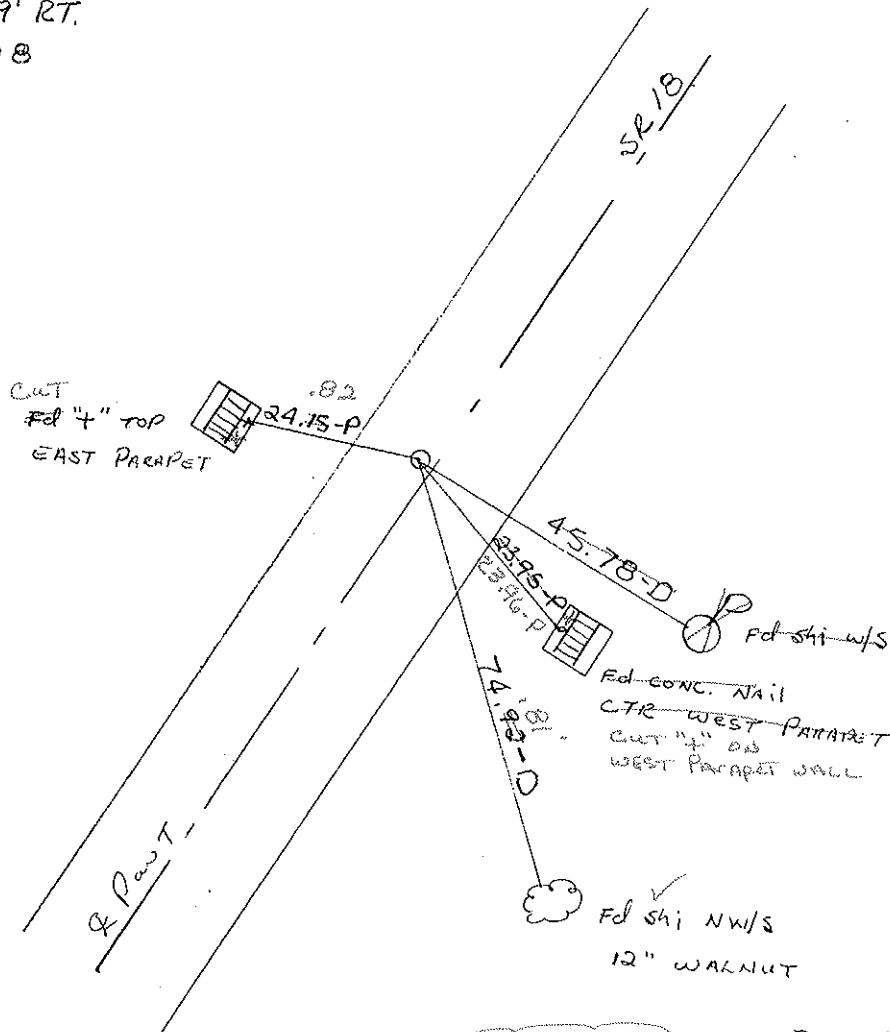


RECORD:

P.I.

$\Delta = 0^\circ - 29' RT.$

73 + 02.28



Fd PK/washer
 7-9-02
 DH

Preventive Maintenance
 Chip & Seal 2002
 Existing Point Uncovered
 Date 12-05-02

O.D.O.T. DISTRICT 2 SURVEY OFFICE

PERSONNEL

REFERENCE NO. 76

SHEET OF

NOTES Hoffman

H.C. Loehkke

R.C. BARNHISEL

DATE 7-15-85

WEATHER CLEAR

TEMP. 80°

ROUTE 18

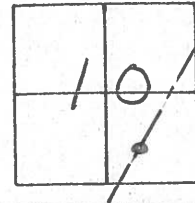
COUNTY SENeca

TOWNSHIP Scipio

SECTION 10

T R

TYPE MONUMENT P.K./WASHER Set P.K./WASHER
 ON SURFACE - BELOW yes 9-20-85 SWH
 LEFT - PAV'T. - RIGHT 0.8
9.8 TO LT. EDGE PAVEMENT
 S.L.M. 1293 + 27

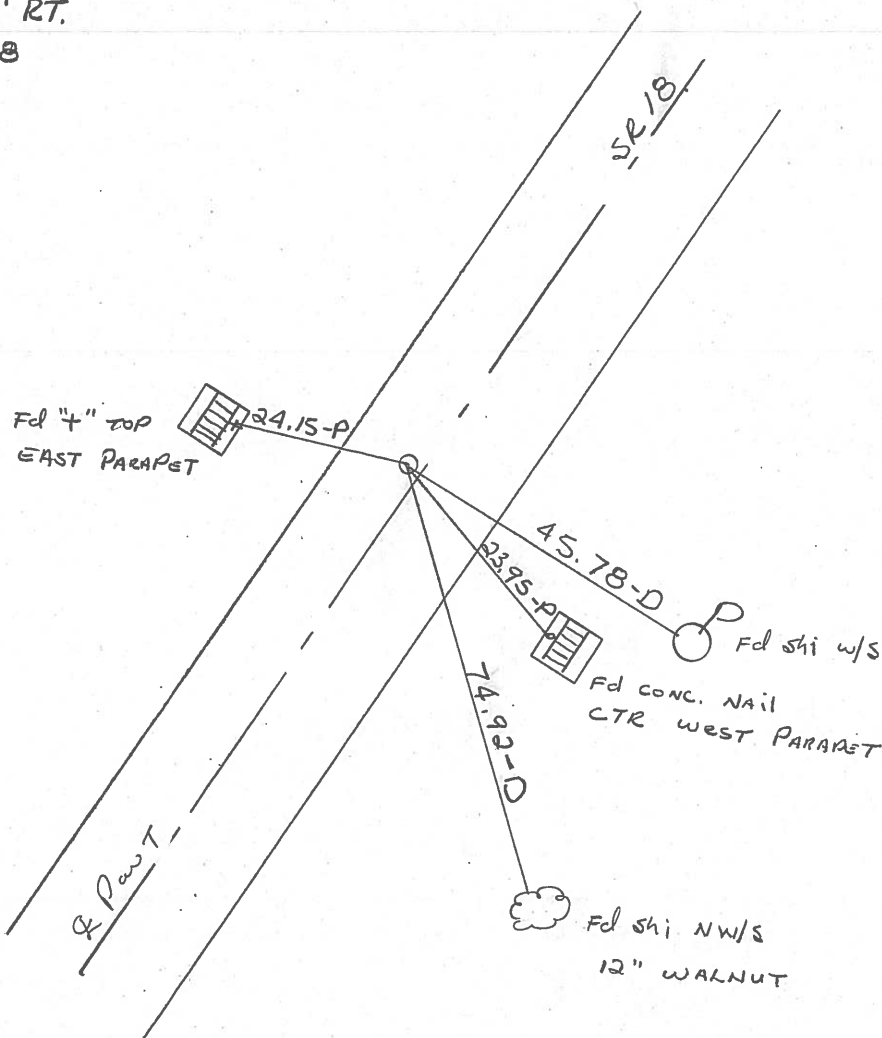


Records:

P.I.

$\Delta = 0^\circ - 29' RT.$

73 + 02.28



County SENECA S.R. 18

Date 2-13-84

Township SCIPIO

Weather RAIN

Section 10

Temp. +50°

T N, R E

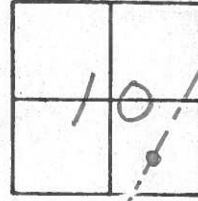
Personnel HOFFMAN

LOEHRKE R.C.

HOUSEHOLDER H.C.

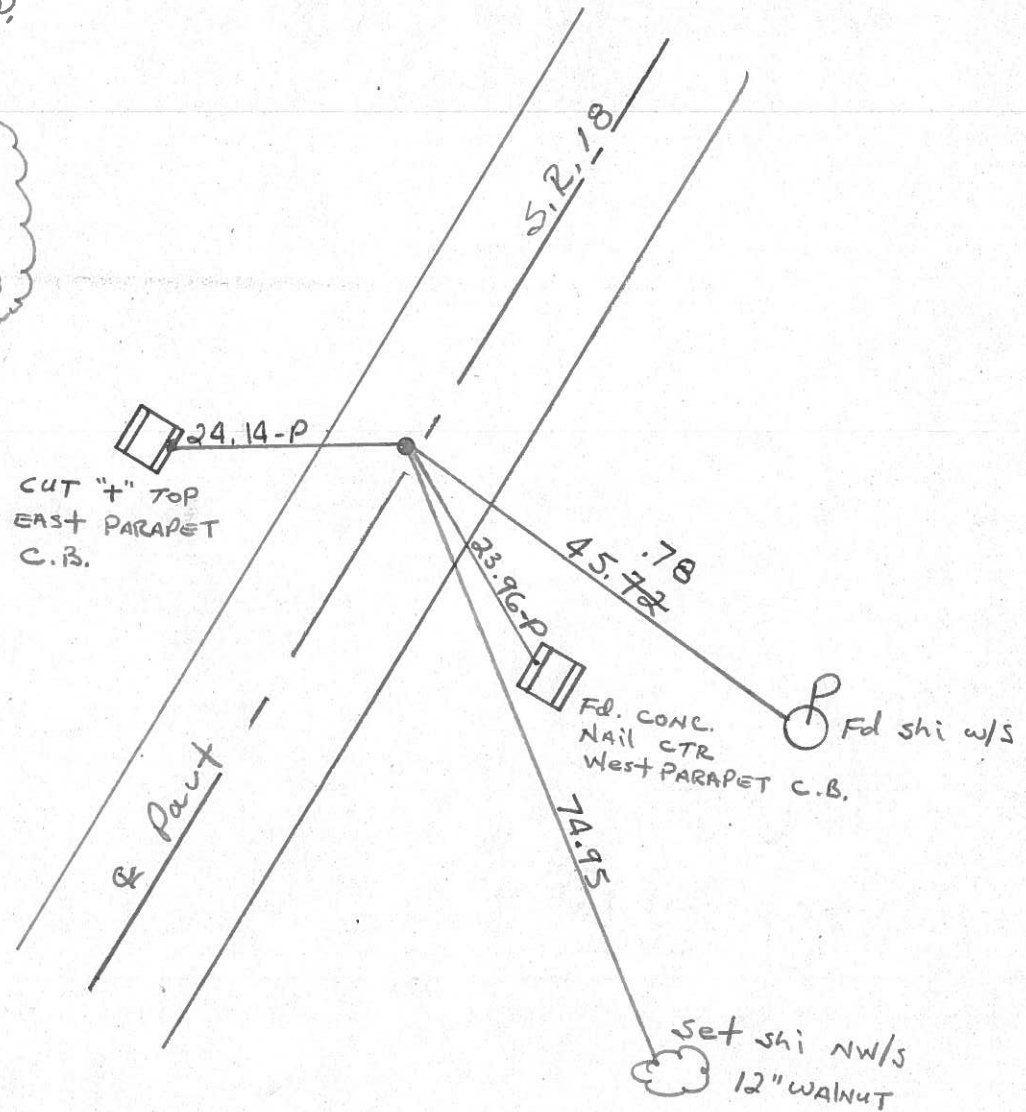
BARNHISEL

76



Fd. P.K./WASHER @ SURFACE
 0.8' Lt. of & part
 9.8' TO Lt. EP.
 11.4' TO RT. EP.

Record:
 P.I.
 $\Delta = 0^\circ - 29' \text{ Rt.}$
 STA. = 73+02.28



PERSONNEL TITLE PERSONNEL TITLE

COUNTY Seneca

DATE 11/16/72

Ash

Cromin

Burke

Anderson

S. R. # 18 (S.H. 167)

WEATHER overcast

SEC. 4

TEMP. 32°

DESCRIPTION Ties for Control Points - Republic to Sandusky Co. Line JOB NO. _____

LEFT

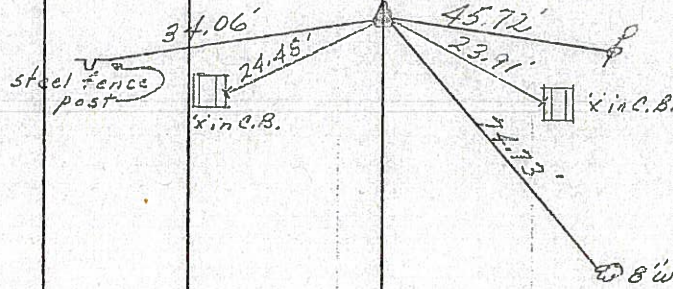
CENTER LINE

RIGHT

76

$\Delta = 00^{\circ} 29' \text{ Rt.}$
P.I.
73+02.28
Fd. R.R. spike 3"
below surface. P.K.
nail & shiner atop and
on surface

Scipio Twp.
Sec. 10

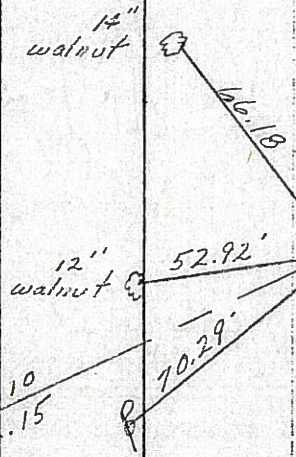


Tied 6/17/71

75

$\Delta = 00^{\circ} 11' \text{ Lt.}$
P.I.
57+07.53
Fd. R.R. spike 3"
below surface. P.K.
nail & shiner atop
& on the surface

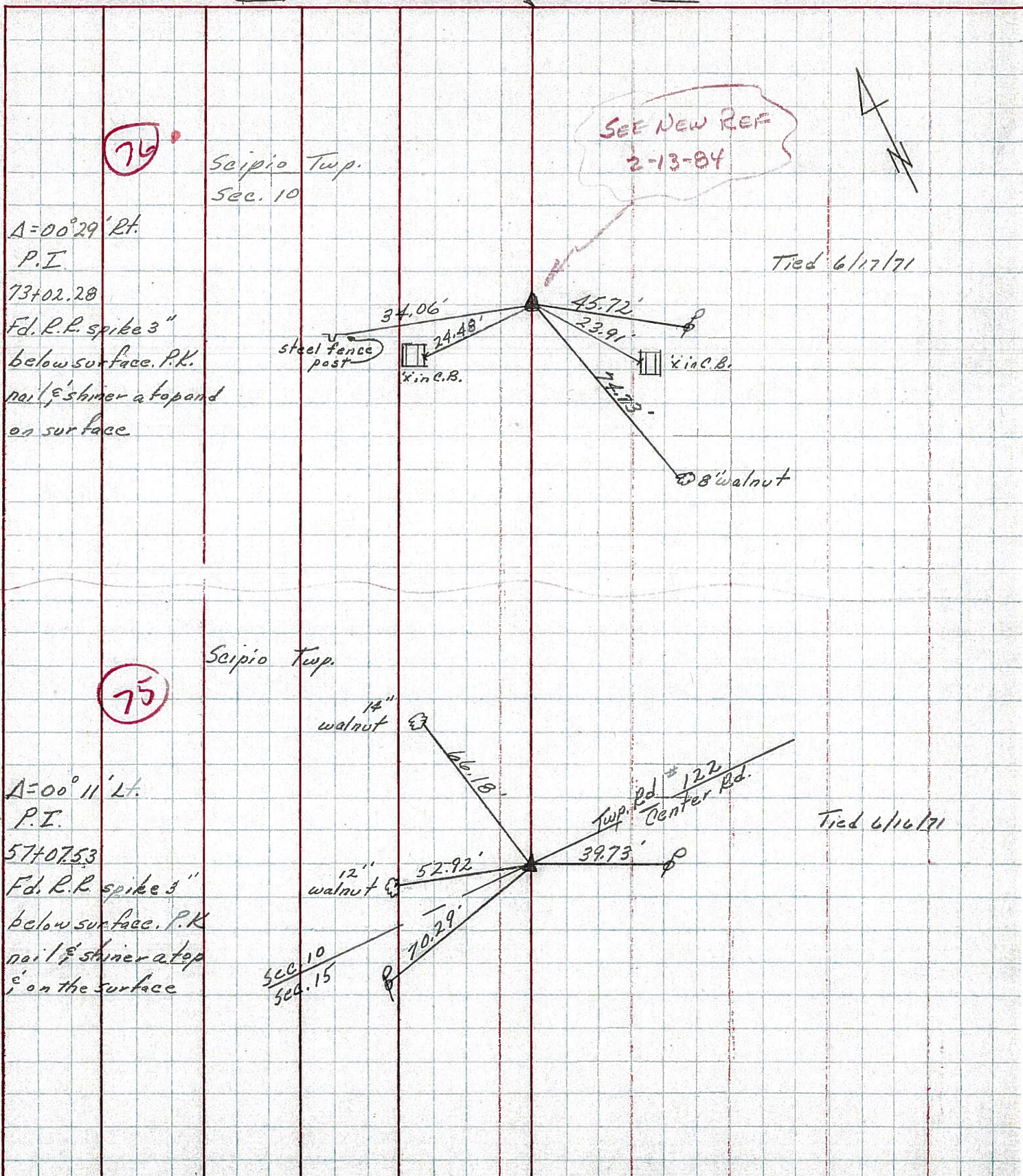
Scipio Twp.



Tied 6/17/71

PERSONNEL	TITLE	PERSONNEL	TITLE	COUNTY	DATE
Ash				Seneca	11/16/72
Cronin				S. R. #18 (S.H. 267)	WEATHER overcast
Ripple				SEC. 4	TEMP. 32°
Anderson					

DESCRIPTION Ties for Control Points - Republic to Sandusky Co. Line JOB NO. _____



PERSONNEL TITLE PERSONNEL TITLE
 Schneider _____ Potts _____
 Mosser _____
 Barbour _____
 Redding _____

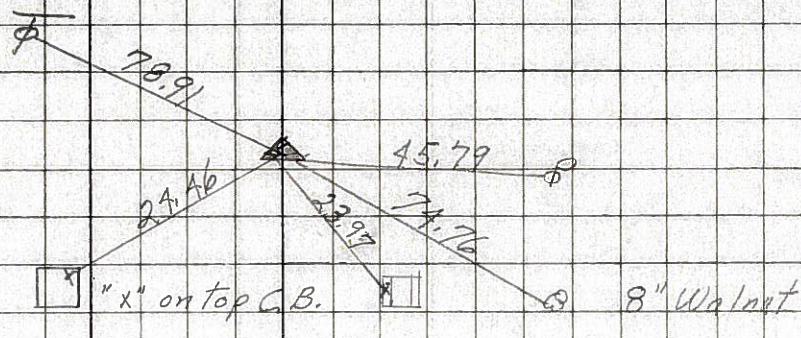
COUNTY Seneca DATE 11-8-68
 S. R. 18 WEATHER Cloudy
 SEC. Republic-San Co. Line TEMP. 40°

DESCRIPTION Ties for Control Points JOB NO. _____

76

73+02.28
 $\Delta = 0^\circ 29' Rt.$
 P.K. Nail

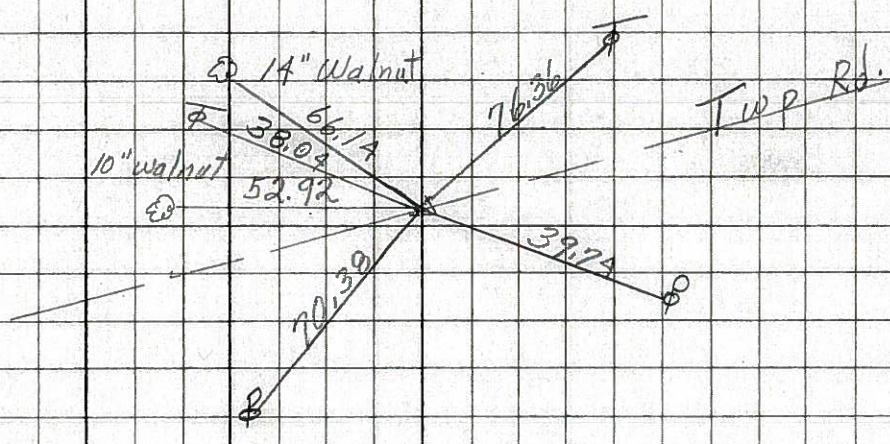
8166



75

57+07.53
 R.P. Spk.
 $\Delta = 0^\circ 11' Lt.$

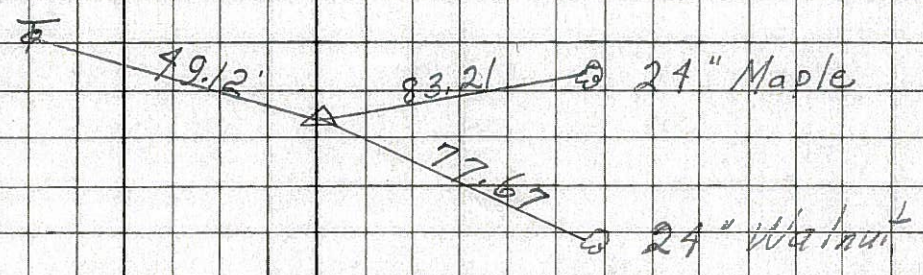
8165



74

30+83.56
 $\Delta = 0^\circ 29' Rt.$
 P.K. Nail

8164



73

P.O.T.
 North Corp Line
 24+84.7
 P.K. Nail

8163

