

O.D.O.T. DISTRICT 2 SURVEY OFFICE (USE ONLY)

PERSONNEL

REFERENCE NO. 76 A

SHEET 7 OF 28

NOTES TRENKA

DATE 5-29-18

ROUTE SR 18

H.C. RHOADES

WEATHER SUNNY

COUNTY SENECA

R.C. TRENKA

TEMP. 85°

TOWNSHIP SCPIO

SECTION 10

DWG BY JAMES

PID 101281

T 2 N R 16 E

TYPE MONUMENT 2" ALUM DISK

~~ON SURFACE~~ - BELOW 0.5"

OFFSET CL PAVEMENT ON LT : RT

10.8 TO LT EDGE PAVEMENT

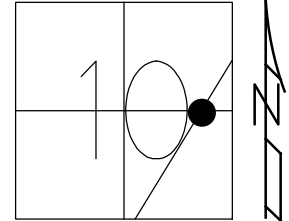
STATION: 1305+28.70

HORIZ.DATUM: NAD83 2011

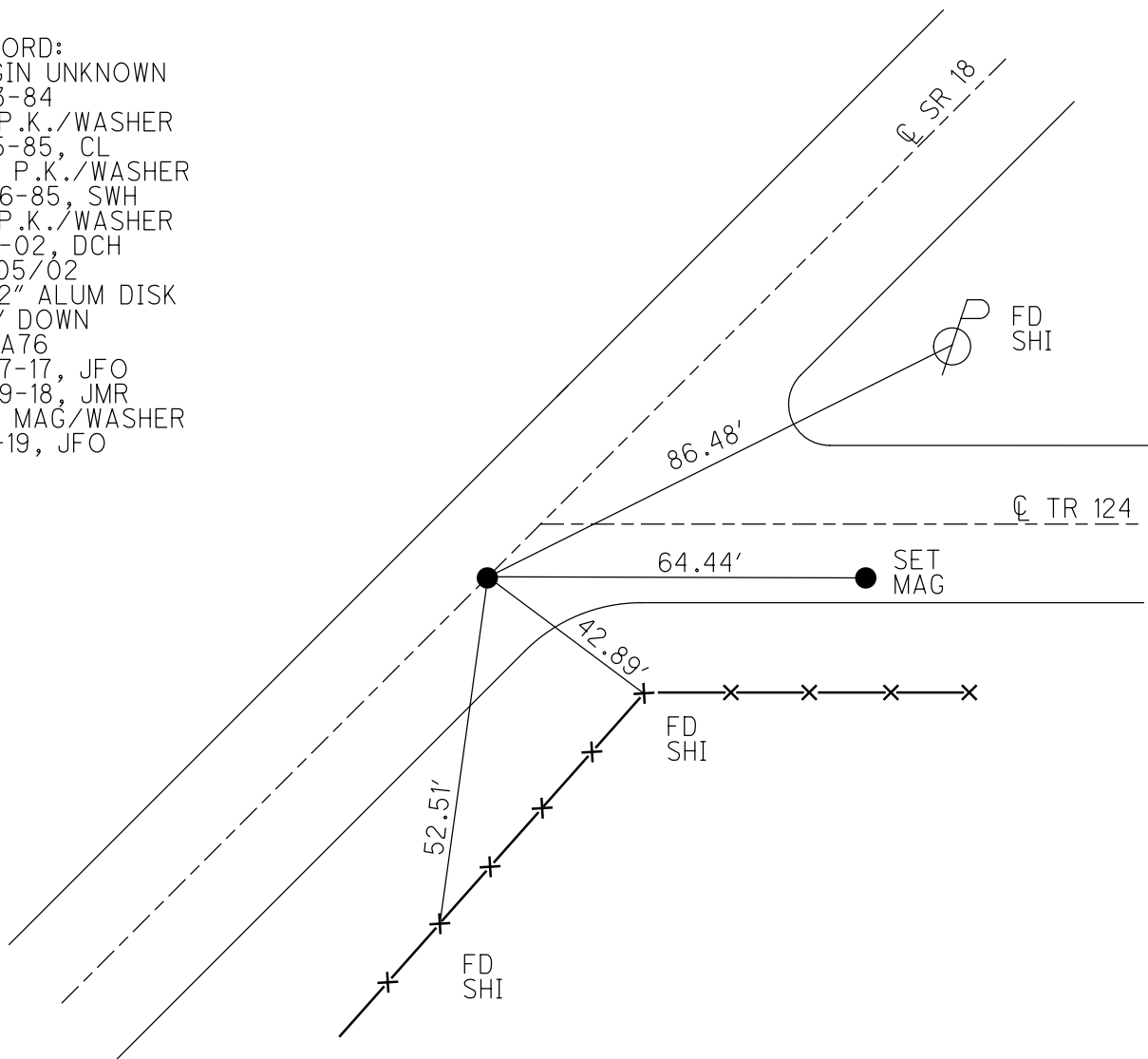
GEOID: NAVD88 2012A

GRID: NORTHING: 539538.212

EASTING: 1831502.871



RECORD:  
 ORGIN UNKNOWN  
 2-13-84  
 FD P.K./WASHER  
 7-15-85, CL  
 SET P.K./WASHER  
 9-26-85, SWH  
 FD P.K./WASHER  
 7-9-02, DCH  
 12/05/02  
 FD 2" ALUM DISK  
 1/2" DOWN  
 REFA76  
 2-27-17, JFO  
 5-29-18, JMR  
 SET MAG/WASHER  
 1-8-19, JFO



# O.D.O.T. DISTRICT 2 SURVEY OFFICE

PERSONNEL \_\_\_\_\_

REFERENCE NO. 76-A

SHEET \_\_\_\_\_ OF \_\_\_\_\_

NOTES Hoffman

H.C. LOEHRKE

R.C. BARNHISEL

DATE 7-15-85

WEATHER CLEAR

TEMP. 80°

ROUTE 18

COUNTY SENECA

TOWNSHIP Scipio

SECTION 10

T. 2 H. R 16 E

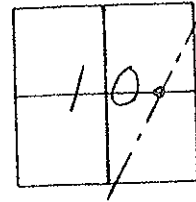
TYPE MONUMENT P.K. / SHINER SET P.K. / WASHK 9-26-85 SWH

ON SURFACE - BELOW yes

~~LEFT~~ - RIGHT yes

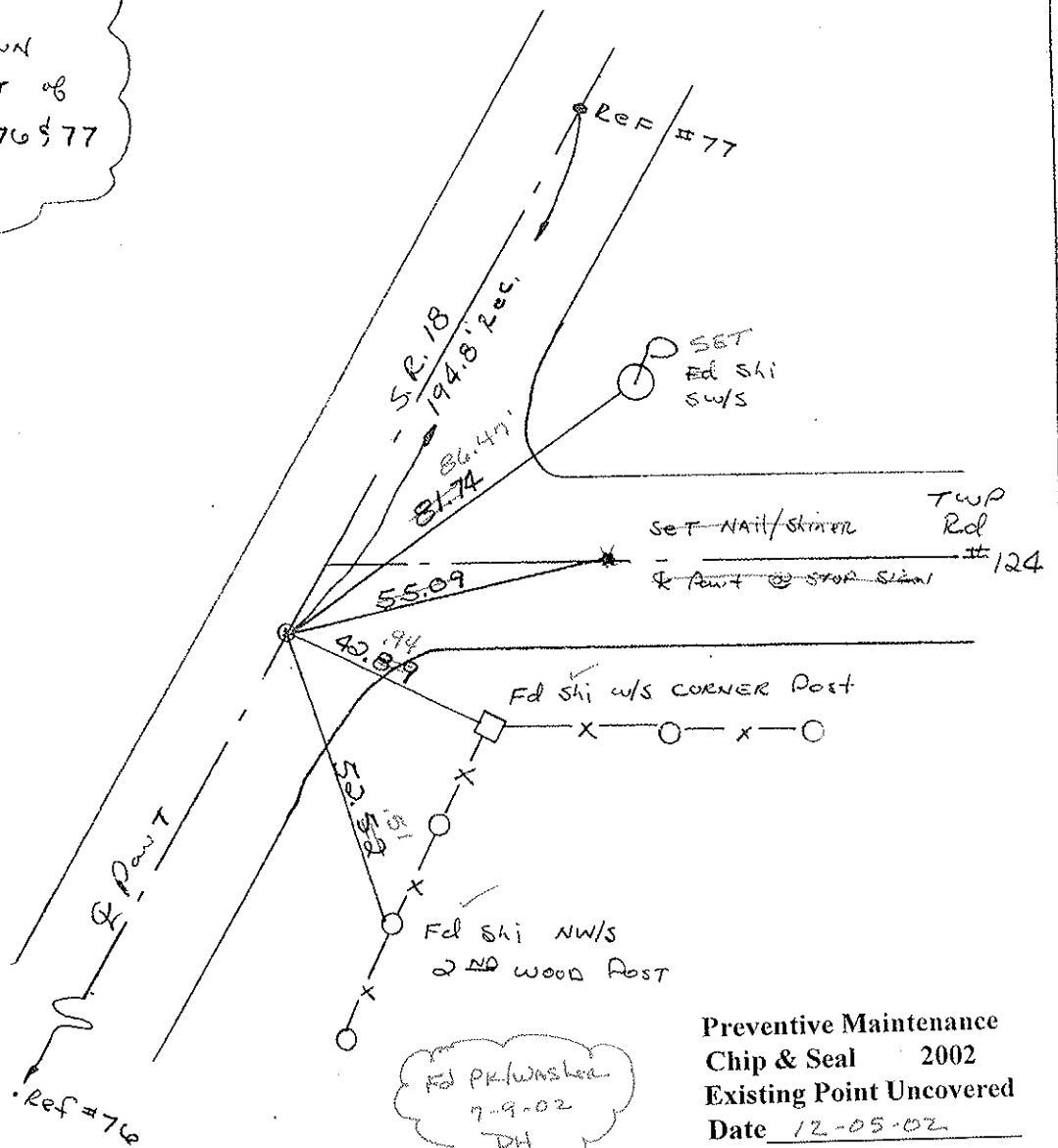
10.8 TO LT. EDGE PAVEMENT 9.0' S. of ♀ Pavt Rd #124

S.L.M. 1309+42



**Record:**

ORIGINAL IS UNKNOWN  
 P.K. IS 0.7' EAST OF  
 LINE BTW Ref 76 & 77  
 2-13-84



Preventive Maintenance  
 Chip & Seal 2002  
 Existing Point Uncovered  
 Date 12-05-02

# O.D.O.T. DISTRICT 2 SURVEY OFFICE

PERSONNEL

REFERENCE NO. 76-A

SHEET      OF     

NOTES Hoffman

H.C. LOEHRKE

R.C. BARNHISEK

DATE 7-15-85

WEATHER CLEAR

TEMP. 80°

ROUTE 18

COUNTY SENECA

TOWNSHIP Scipio

SECTION 10

T      R     

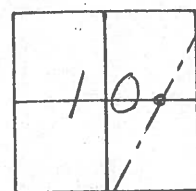
TYPE MONUMENT P.K./SHINER Set P.K./WASHER  
9-26-85 SWH

ON SURFACE - ~~BELOW~~ yes

~~LEFT- & PAVT.~~ ~~RIGHT~~ yes

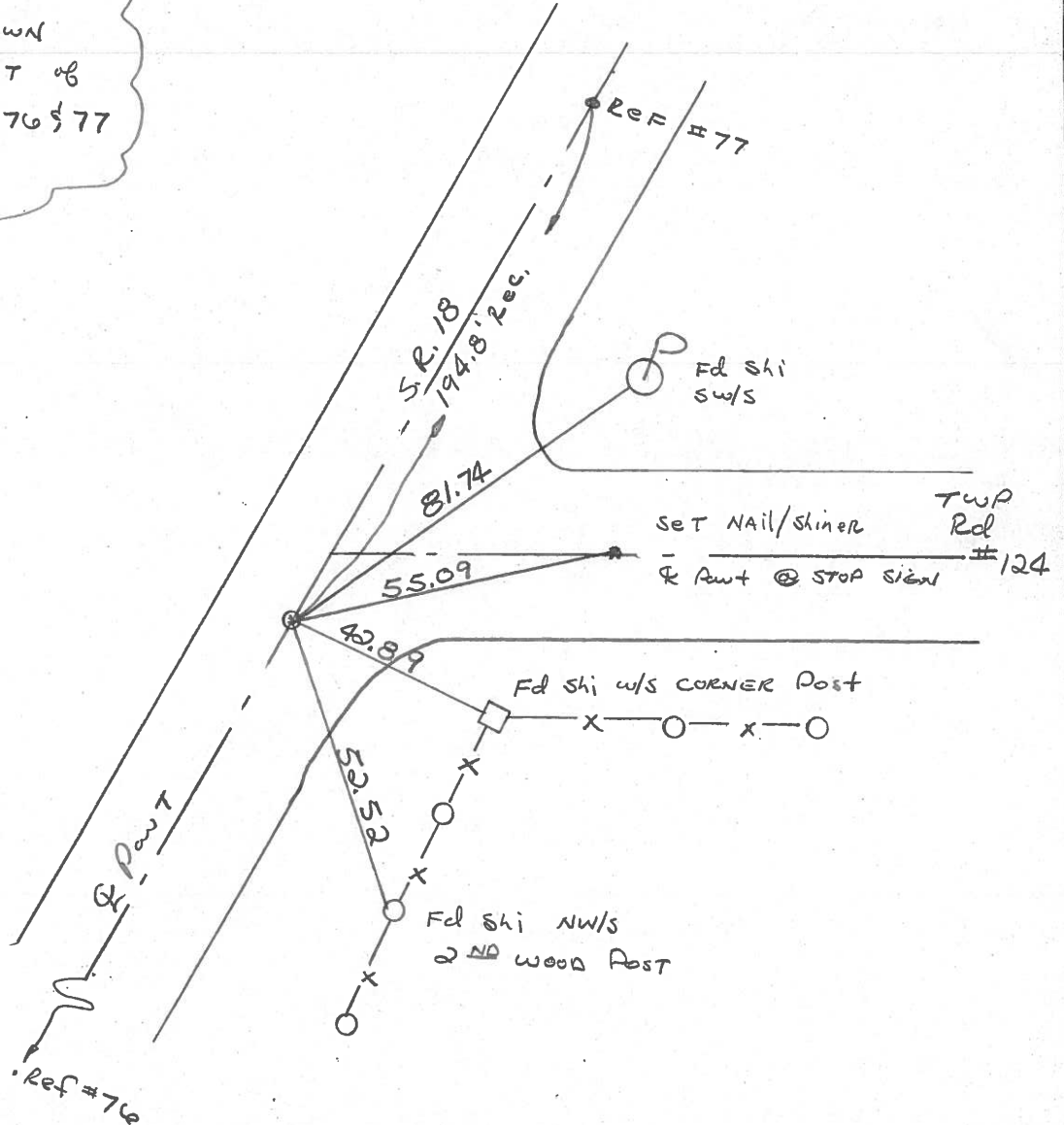
10.8 TO LT. EDGE PAVEMENT 9.0' S. of & PAVT  
Rd #124

S.L.M. 1309+42



Record:

ORIGIN IS UNKNOWN  
 P.K. IS 0.7' EAST OF  
 LINE BTW REF 76 & 77  
 2-13-84



Q.D.O.T. DISTRICT 2 SURVEY OFFICE

SHEET \_\_\_\_\_ OF \_\_\_\_\_

County Seneca S.R. 18

Date 2-13-84

Township Scipio

Weather RAIN

Section 10

Temp. +50°

T N, R E

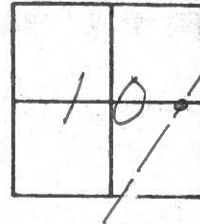
Personnel HOFFMAN

LOHRKE

HOUSEHOLDER

BARNHISEL

#76-A



Fd P.K./shiner @ SURFACE ORIGIN UNKNOWN

ON & PART S.R. 18

10.8' TO LT. EP SR18

9.0' S. of & PART TWP. Rd #124

0.7' EAST of THE LINE

BETWEEN REF POINT #76

AND REF. POINT #77

