

O.D.O.T. DISTRICT 2 SURVEY OFFICE (USE ONLY)

PERSONNEL

REFERENCE NO. 77

SHEET 8 OF 28

NOTES TRENKA
 H.C. RHOADES
 R.C. TRENKA

DATE 5-29-18
 WEATHER SUNNY
 TEMP. 80°

ROUTE SR 18
 COUNTY SENECA
 TOWNSHIP SCIPIO
 SECTION 10
 T 2 N R 16 E

DWG BY JAMES PID 101281

TYPE MONUMENT P.K./WASHER

ON SURFACE - ~~BELOW~~ ON

OFFSET Q PAVEMENT ON LT : RT
9.6' TO LT EDGE PAVEMENT

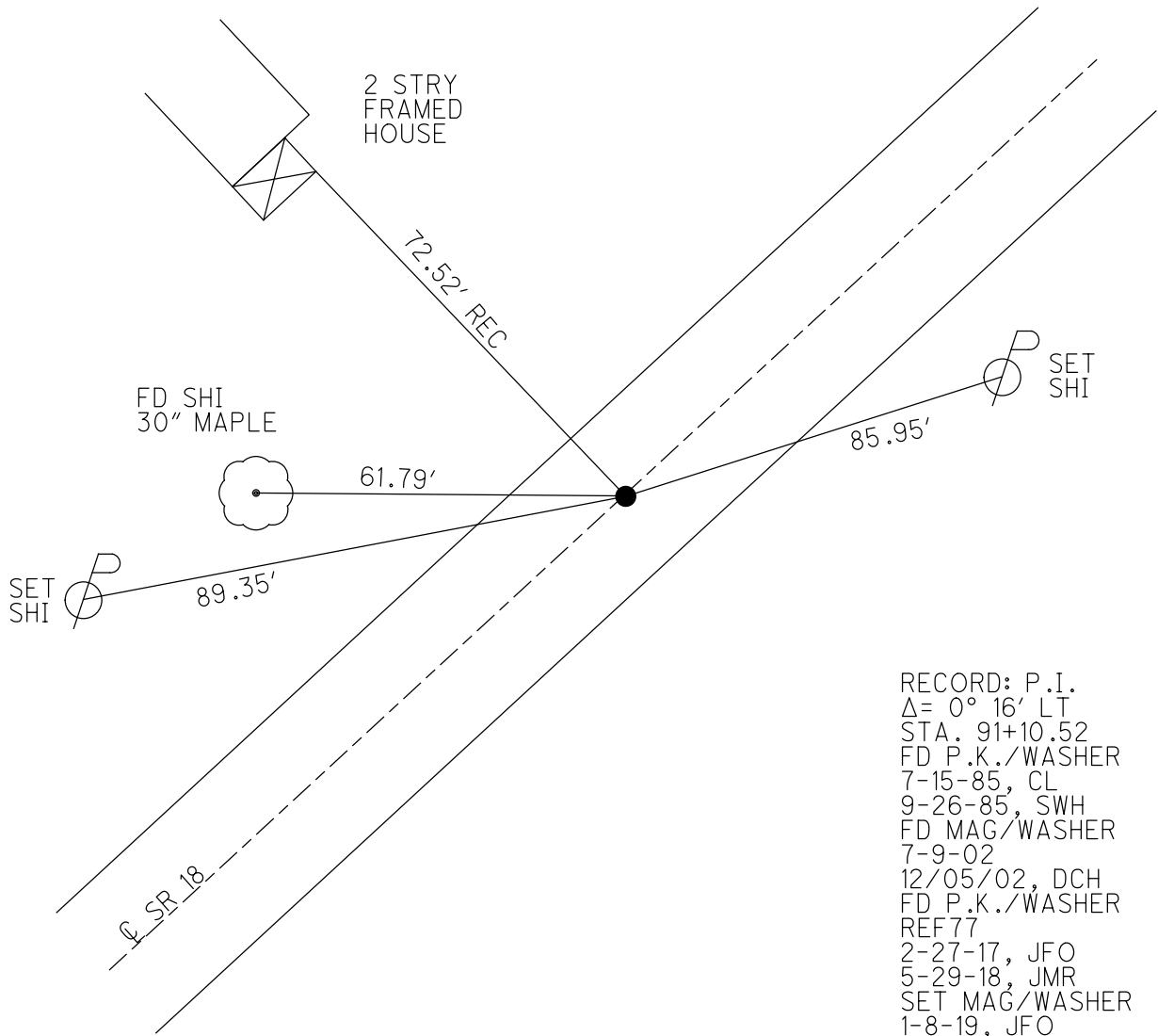
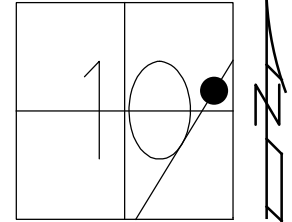
STATION: 1307+23.40

HORZ.DATUM: NAD83 2011

GEOID: NAVD88 2012A

GRID: NORTHING: 539698.579

EASTING: 1831613.294



RECORD: P.I.
 $\Delta = 0^\circ 16' \text{ LT}$
 STA. 91+10.52
 FD P.K./WASHER
 7-15-85, CL
 9-26-85, SWH
 FD MAG/WASHER
 7-9-02
 12/05/02, DCH
 FD P.K./WASHER
 REF77
 2-27-17, JFO
 5-29-18, JMR
 SET MAG/WASHER
 1-8-19, JFO

O.D.O.T. DISTRICT 2 SURVEY OFFICE

PERSONNEL

REFERENCE NO. 77

SHEET OF

NOTES Hoffman

H.C. LOEHRKE

R.C. BARNHISEL

DATE 7-15-85

WEATHER CLEAR

TEMP. 80°

ROUTE 18

COUNTY SENECA

TOWNSHIP Scipio

SECTION 10

T. 2 N. R. 16 E.

TYPE MONUMENT P.K.

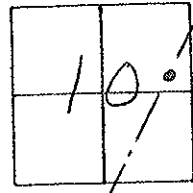
ON SURFACE - BELOW Yes

~~LEFT - C. PAV'T.~~ RIGHT Yes

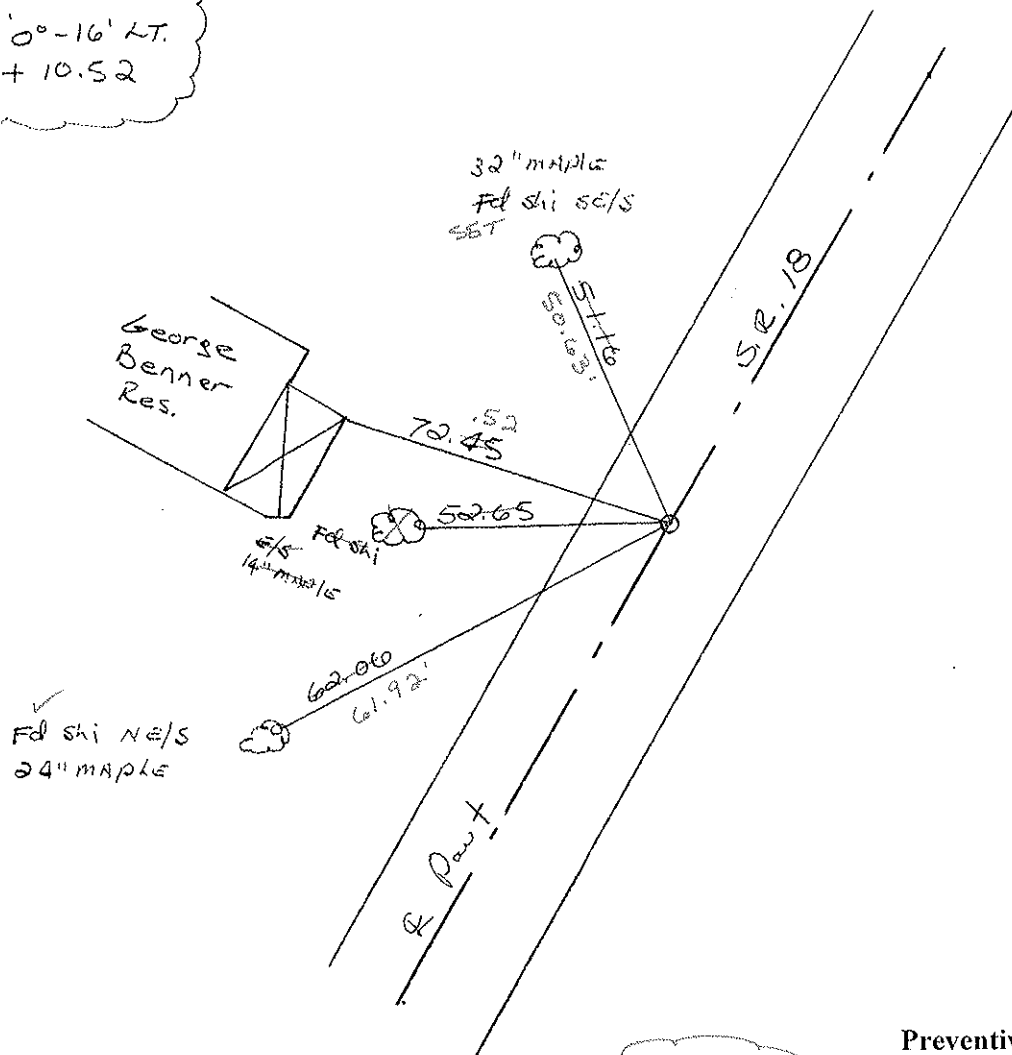
9.6' TO LT. EDGE PAVEMENT

S.L.M. 1311 + 37

Set P.K. / washer
9-26-85 SWH



Records:
P.I.
 $\Delta = 0^\circ - 16' \text{ LT.}$
91 + 10.52



Fd mag nail
7-9-02
DH

Preventive Maintenance
Chip & Seal 2002
Existing Point Uncovered
Date 12-05-02

O.D.O.T. DISTRICT 2 SURVEY OFFICE

PERSONNEL _____

REFERENCE NO. 77

SHEET _____ OF _____

NOTES Hoffman

H.C. LOENRKE

R.C. BARNHISEL

DATE 7-15-85

WEATHER CLEAR

TEMP. 80°

ROUTE 18

COUNTY SENECA

TOWNSHIP Scipio

SECTION 10

T _____ R _____

TYPE MONUMENT P.K.

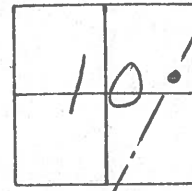
*Set P.I. / washer
9-26-85 SWM*

ON SURFACE - ~~BELOW~~ yes

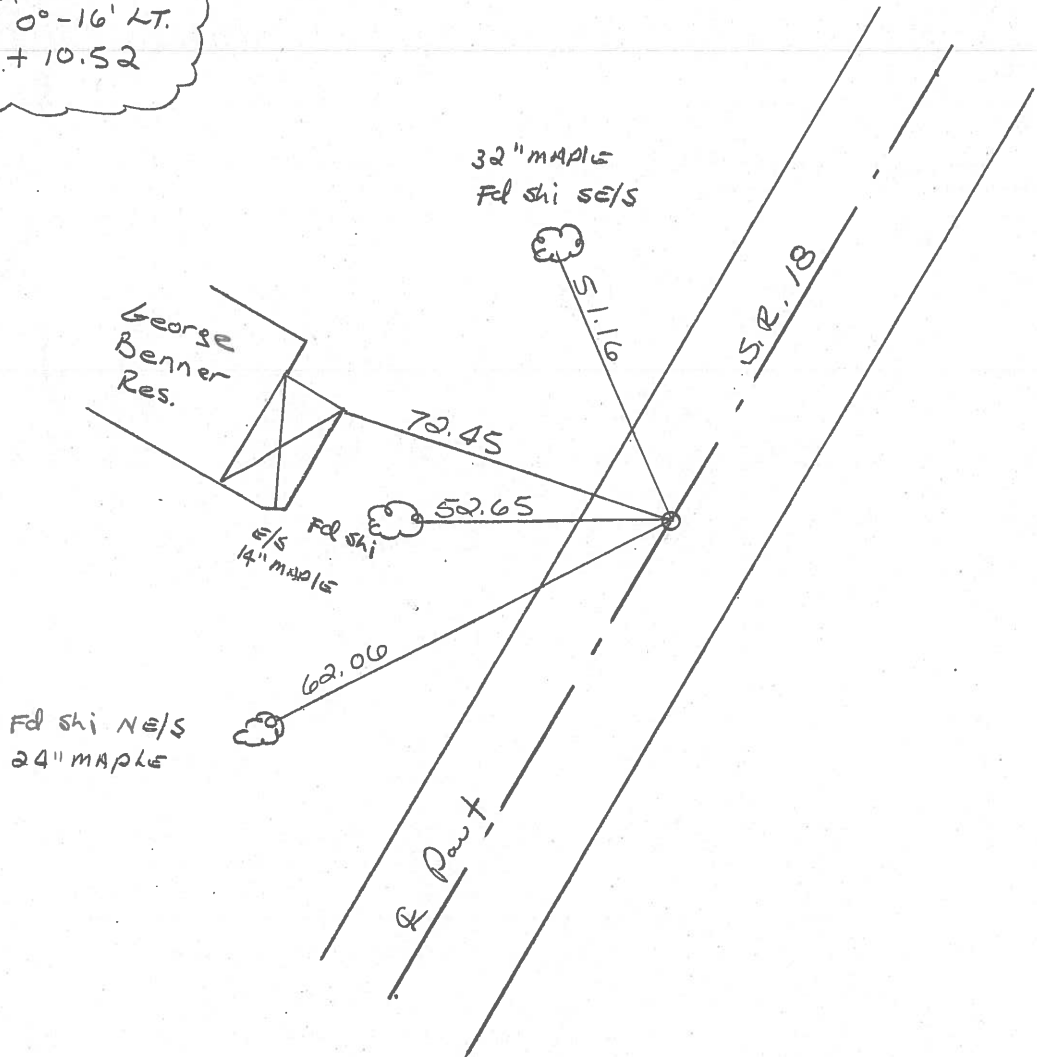
~~LEFT- & PAV'T.~~ - RIGHT yes

9.6 TO LT. EDGE PAVEMENT

S.L.M. 1311+37



Record:
P.I.
 $\Delta = 0^\circ - 16' \text{ LT.}$
91+10.52



County SENECA S.R. 18

Date 2-13-84

Township SCIPIO

Weather RAIN

Section 10

Temp. +50°

T N, R E

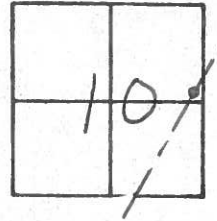
Personnel HOFFMAN

LOEHRKE R.C.

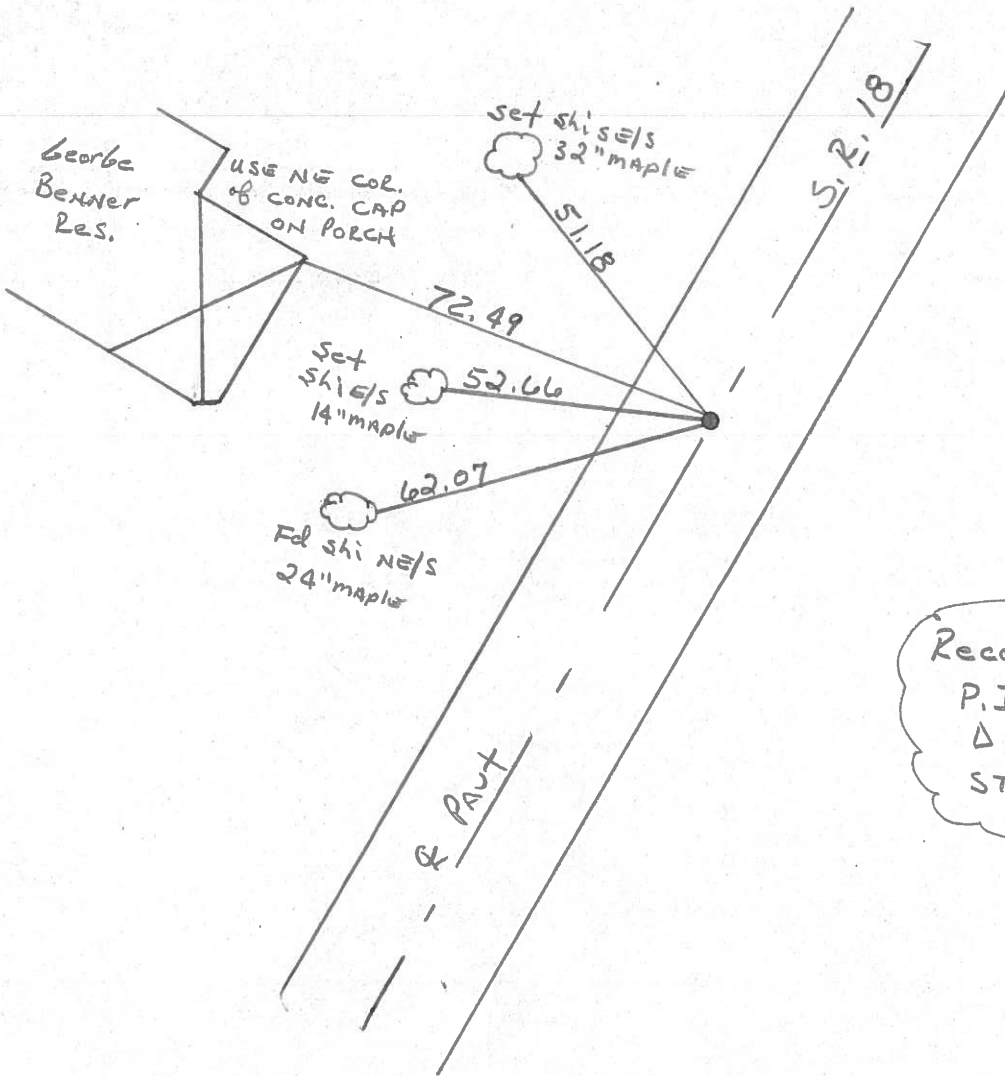
HOUSEHOLDER H.C.

BARNHISEL

77



Fd P.I. Nail @ surface
 ON & PAUT
 9.6' TO LT. EP.
 11.5' TO RT. EP.

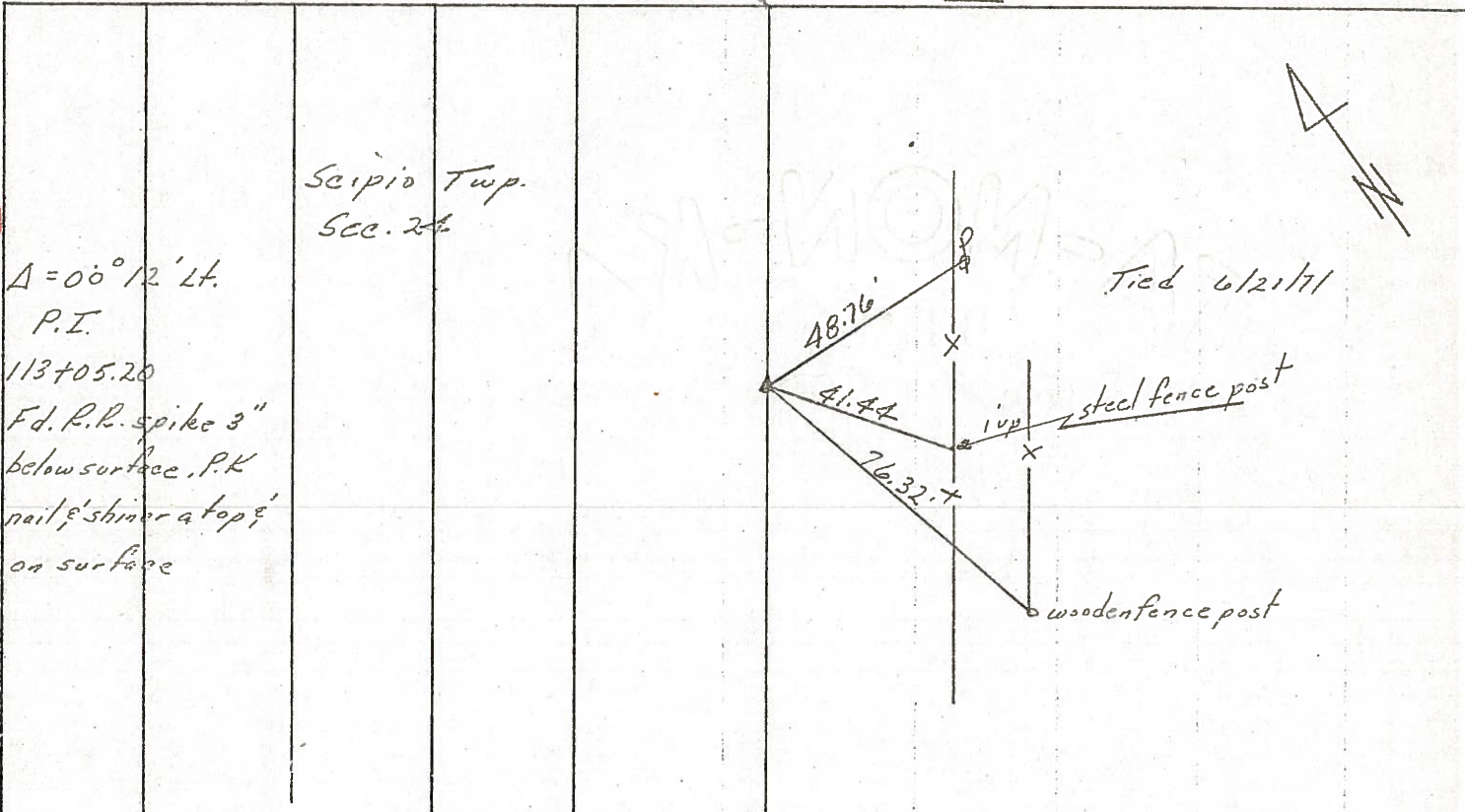


Record:
 P.I.
 $\Delta = 0^\circ - 16' \text{ LT.}$
 STA = 91 + 10.52

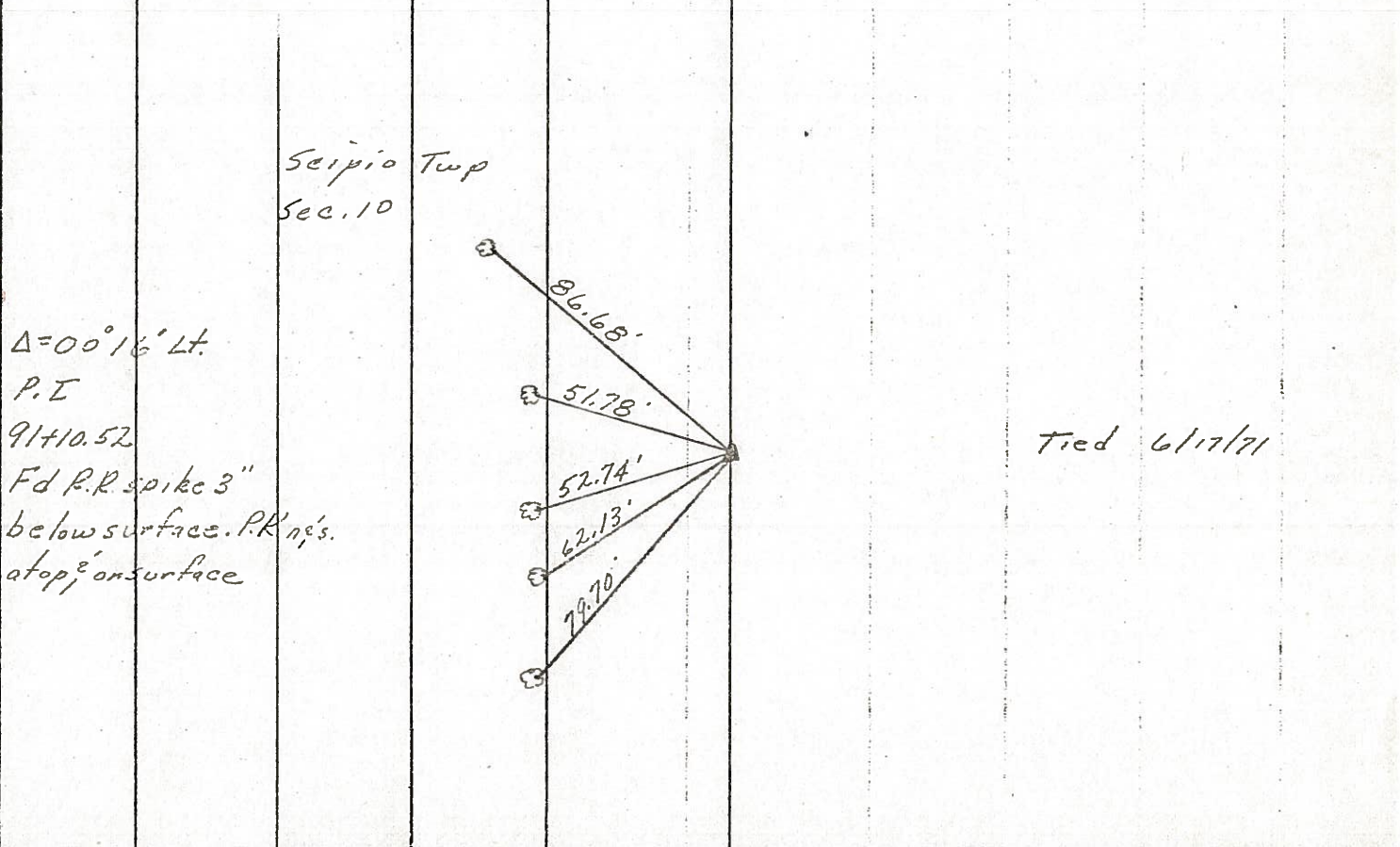
PERSONNEL	TITLE	PERSONNEL	TITLE	COUNTY	DATE
Ash				Seneca	11/16/72
Cronin				S. R. #18 (S.H. #267)	WEATHER OVERCAST
Ripple				SEC. 4	TEMP. 32°
Anderson					

DESCRIPTION *Ties for Control Points - Republic to Seneca Co. Line* JOB NO. _____

78



77



PERSONNEL TITLE PERSONNEL TITLE

Ash
Cronin
Ripple
Anderson

COUNTY Seneca

DATE 11/16/72

S. R. #18 (S.H. #267)

WEATHER overcast

SEC. 4

TEMP. 32°

DESCRIPTION Ties For Control Points - Republic to Sandusky Co. Line

JOB NO.

LEFT

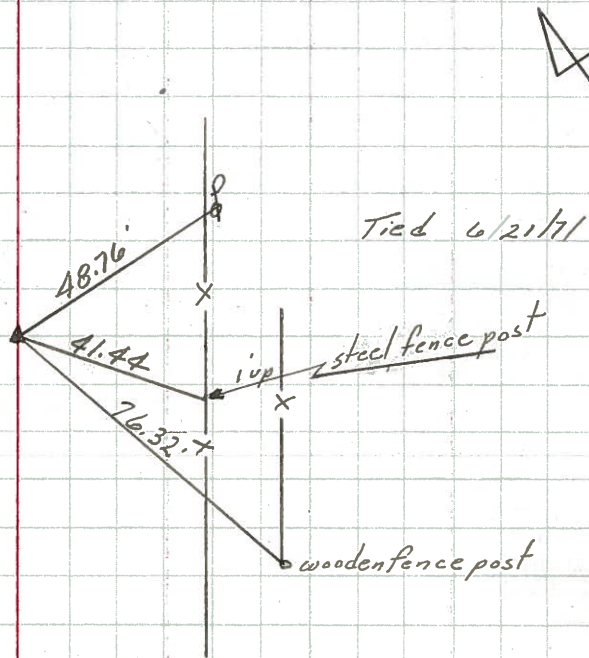
CENTER LINE

RIGHT

76

Scipio Twp.
Sec. 24 ?

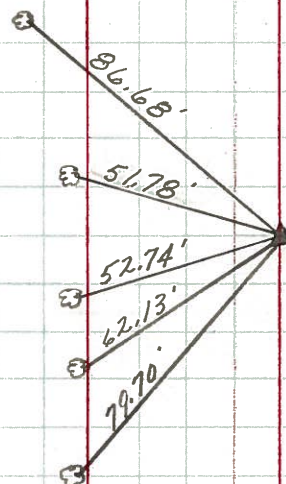
$\Delta = 00^\circ 12' Lt.$
P.I.
113+05.20
Fd. R.R. spike 3"
below surface. P.K
nail & shiner at top &
on surface



77

Scipio Twp
Sec. 10

$\Delta = 00^\circ 16' Lt.$
P.I.
91+10.52
Fd. R.R. spike 3"
below surface. P.K n.s.
atop & on surface



SEE NEW REF.
2-13-84

Tied 6/17/71

PERSONNEL	TITLE	PERSONNEL	TITLE	COUNTY	DATE
Schneider		Potts		Seneca	11-8-68
Mosser				S. R.	1 B
Barbour				WEATHER	Cloudy-snow
Redling				SEC.	Republic to Sen. Co. Line
				TEMP.	35°

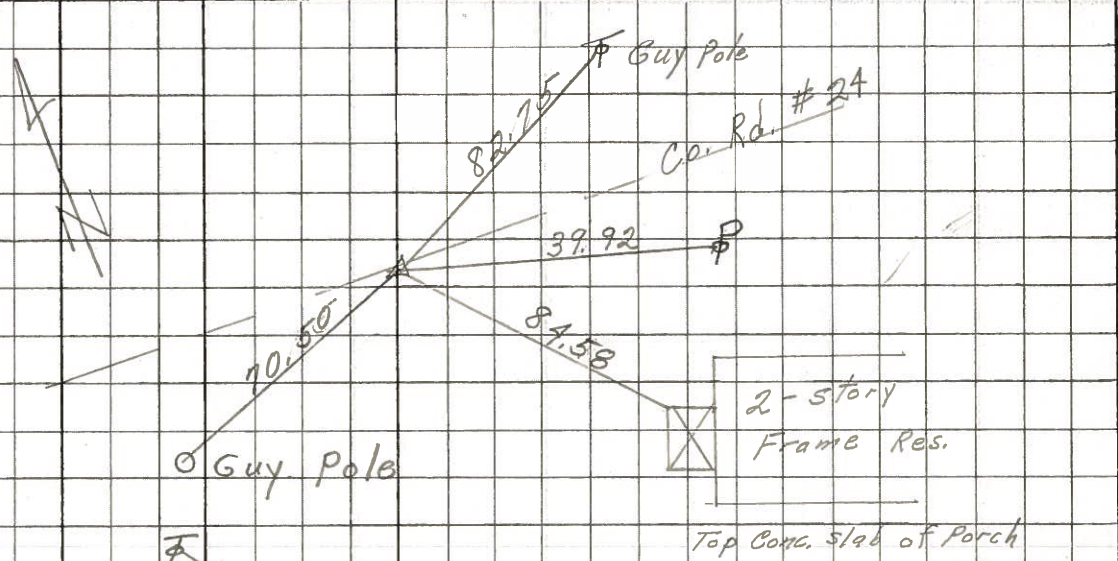
DESCRIPTION Ties for Control Points JOB NO. _____

LEFT CENTER LINE RIGHT

80

153+31.08
 Δ = 0° 34' Rt.
 P.K. Nail

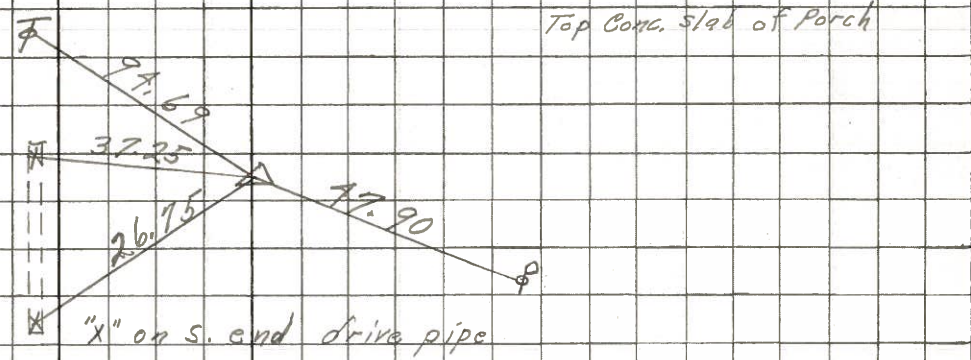
8170



79

136+40.9
 P.K. Nail
 Δ = 0° 16' Lt.

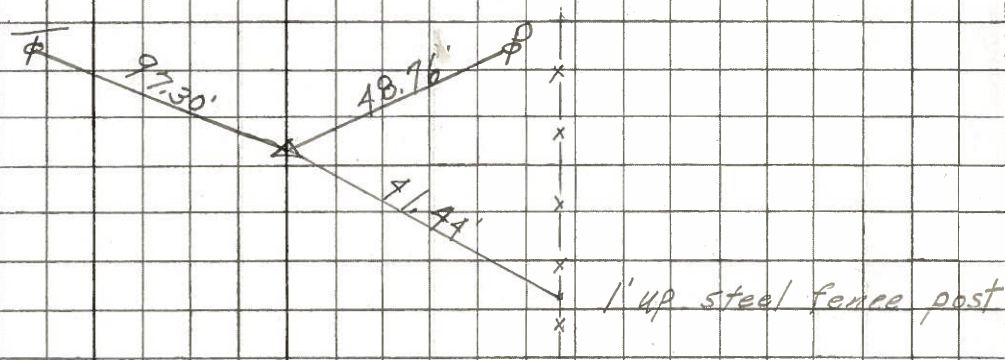
8169



78

113+05.2
 P.K. Nail
 Δ = 0° 12' Lt.

8168



77

91+10.52
 P.K. Nail
 Δ = 0° 16' Lt.

8167

