

O.D.O.T. DISTRICT 2 SURVEY OFFICE (USE ONLY)

PERSONNEL

REFERENCE NO. 78

SHEET 9 OF 28

NOTES TRENKA

DATE 5-29-18

ROUTE SR 18

H.C. RHOADES

WEATHER SUNNY

COUNTY SENECA

R.C. TRENKA

TEMP. 80°

TOWNSHIP SCIPIO

DWG BY JAMES

PID 101281

SECTION 10

T 2 N R 16 E

TYPE MONUMENT P.K./WASHER

ON SURFACE - ~~BELOW~~ ON

OFFSET Q PAVEMENT ON LT : RT

10.0' TO RT EDGE PAVEMENT

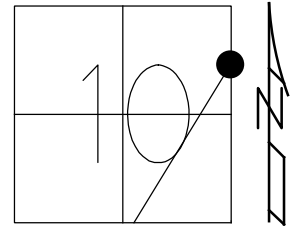
STATION: 1328+64.27

HORZ.DATUM: NAD83 2011

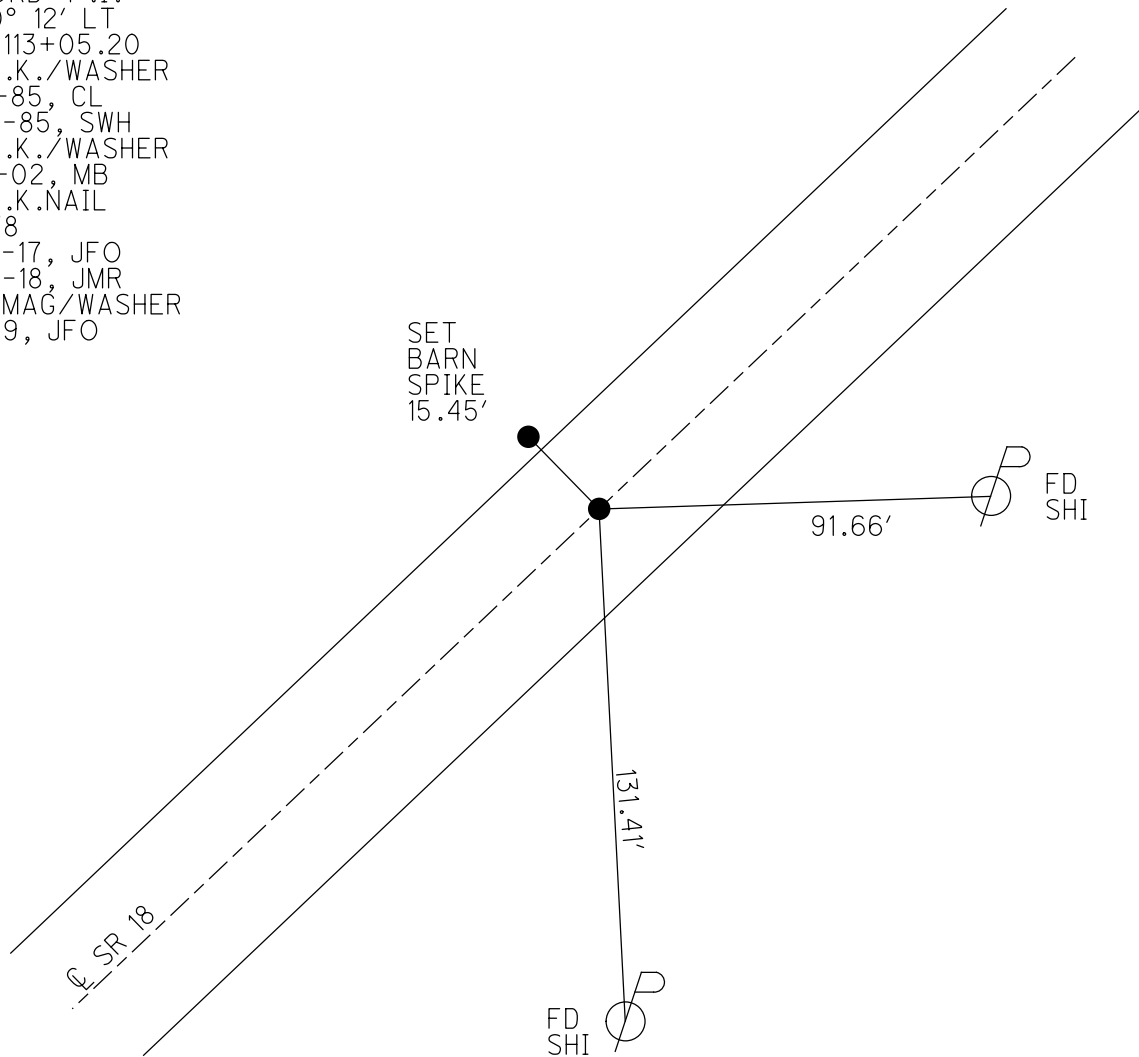
GEOID: NAVD88 2012A

GRID: NORTHING: 541464.307

EASTING: 1832823.885



RECORD: P.I.
 $\Delta = 0^\circ 12' \text{ LT}$
 STA 113+05.20
 FD P.K./WASHER
 7-15-85, CL
 9-26-85, SWH
 FD P.K./WASHER
 7-31-02, MB
 FD P.K.NAIL
 REF78
 2-27-17, JFO
 5-29-18, JMR
 SET MAG/WASHER
 1-8-19, JFO

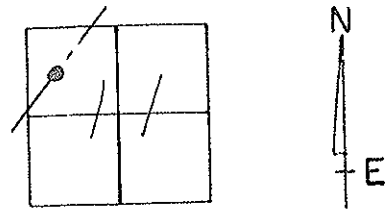


O.D.O.T. DISTRICT 2 SURVEY OFFICE

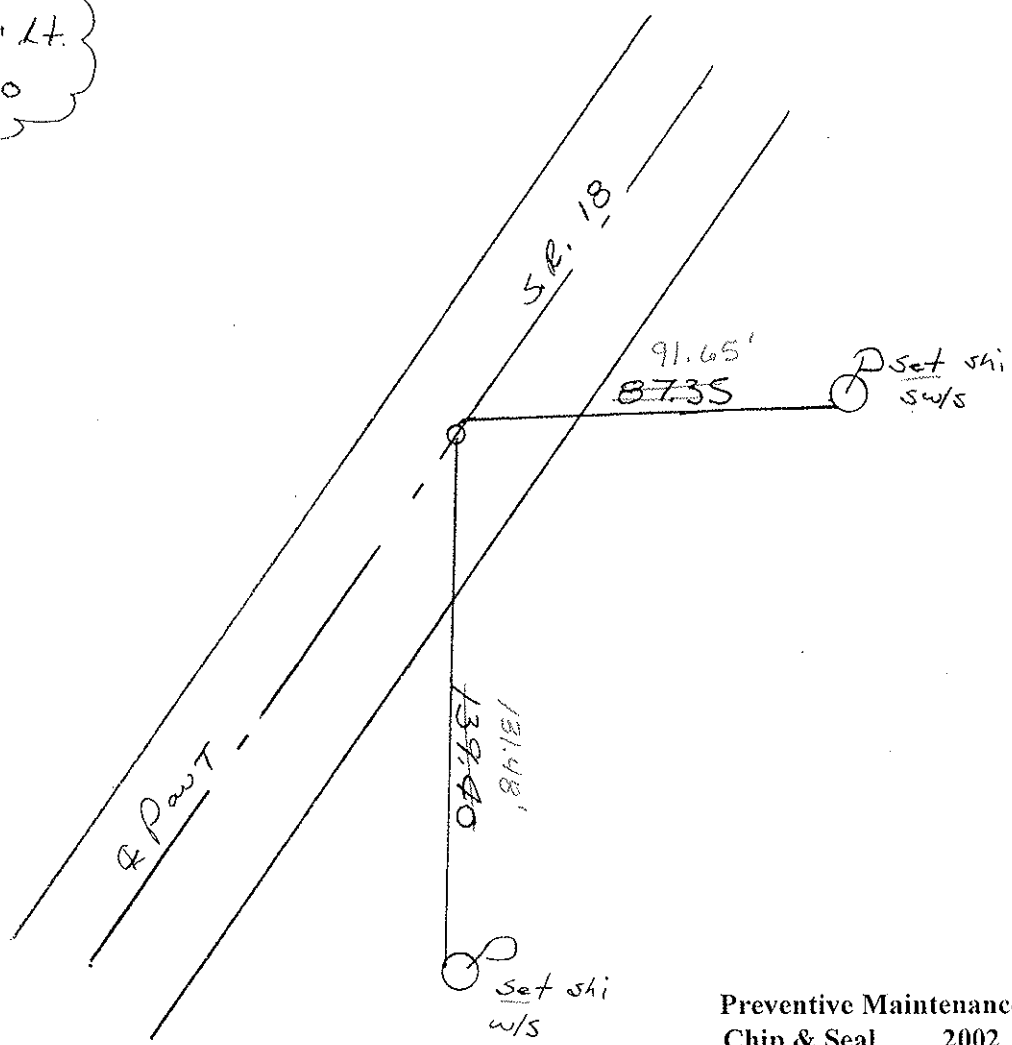
PERSONNEL _____ REFERENCE NO. 78 SHEET _____ OF _____

NOTES Hoffman DATE 7-15-85 ROUTE 18
 H.C. Loehrke WEATHER Clear COUNTY Seneca
 R.C. Barnhisel TEMP. 80° TOWNSHIP Scipio
 SECTION 11
 T Z N R 16 E

TYPE MONUMENT P.K. Set P.K./WASHER
 ON SURFACE - BELOW Yes 9-26-85 SWM
 LEFT- & PAW'T. - RIGHT Yes
10.0 TO RT EDGE PAVEMENT
 S.L.M. 1333 + 78



RECORD!
 P.I.
 $\Delta = 0^\circ - 12' Lt.$
 113 + 05.20



FD PK NAIL
 7-31-02
 MB

Preventive Maintenance
 Chip & Seal 2002
 Existing Point Uncovered
 Date 12-05-02

O.D.O.T. DISTRICT 2 SURVEY OFFICE

PERSONNEL _____

REFERENCE NO. 78

SHEET _____ OF _____

NOTES Hoffman

H.C. LOETRKE

DATE 7-15-85

ROUTE 18

R.C. BARNHISEL

WEATHER CLEAR

COUNTY SENECA

TEMP. 80°

TOWNSHIP Scipio

SECTION 11

T _____ R _____

TYPE MONUMENT P.K.

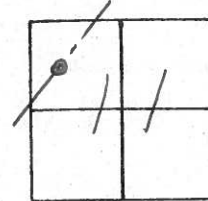
Set P.K./WASHER
9-26-85 sw/s

ON SURFACE - ~~BELOW~~ yes

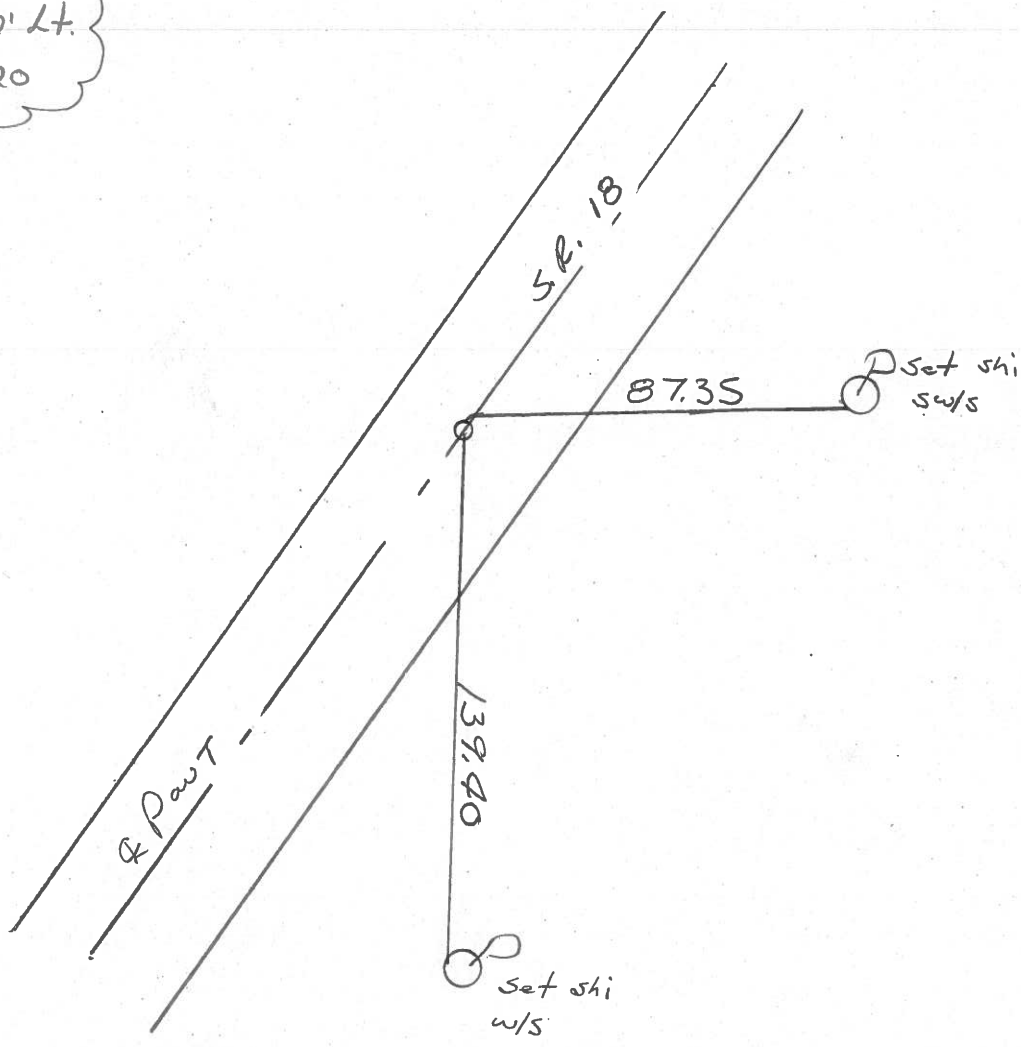
LEFT - ~~C~~ PAV'T. - ~~RIGHT~~ yes

10.0 TO RT EDGE PAVEMENT

S.L.M. 1333 + 78



RECORD:
P.I.
 $\Delta = 0^\circ - 12' \text{ Lt.}$
113 + 05.20



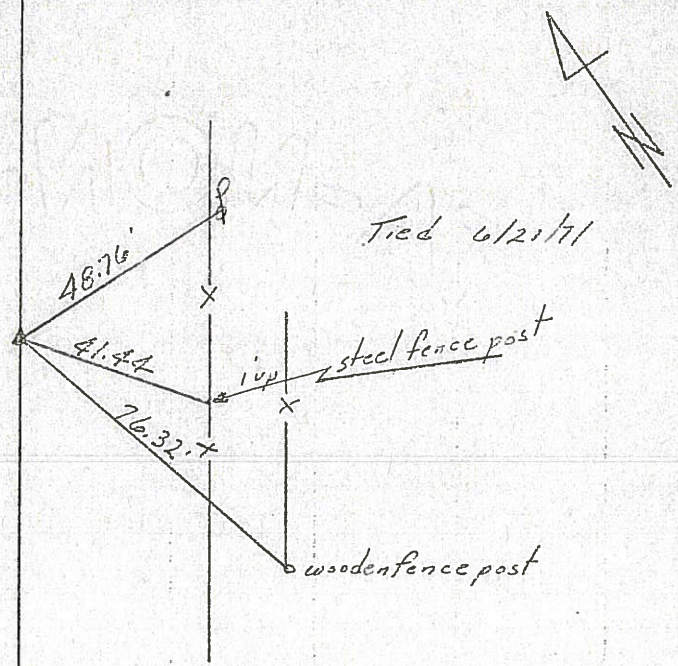
PERSONNEL	TITLE	PERSONNEL	TITLE	COUNTY	DATE
Ash				Seneca	11/16/72
Cronin				S. R. #18 (S.H. #267)	WEATHER overcast
Ripple				SEC. 4	TEMP. 32°
Anderson					

DESCRIPTION Ties for Control Points - Republic to Sandusky Co. Line JOB NO. _____

78

$\Delta = 00^{\circ} 12' Lt.$
 P.I.
 113+05.20
 Fd. R.R. spike 3"
 below surface. P.K.
 nail & shiner at top &
 on surface

Scipio Twp.
 Sec. 24

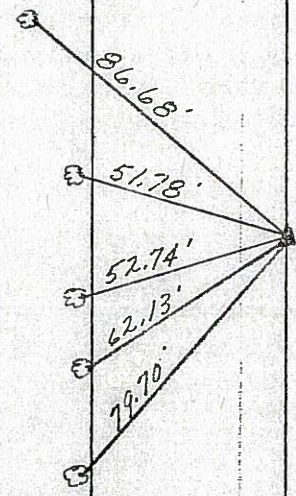


Tied 6/21/71

77

$\Delta = 00^{\circ} 16' Lt.$
 P.I.
 91+10.52
 Fd. R.R. spike 3"
 below surface. P.K. n's.
 at top & on surface

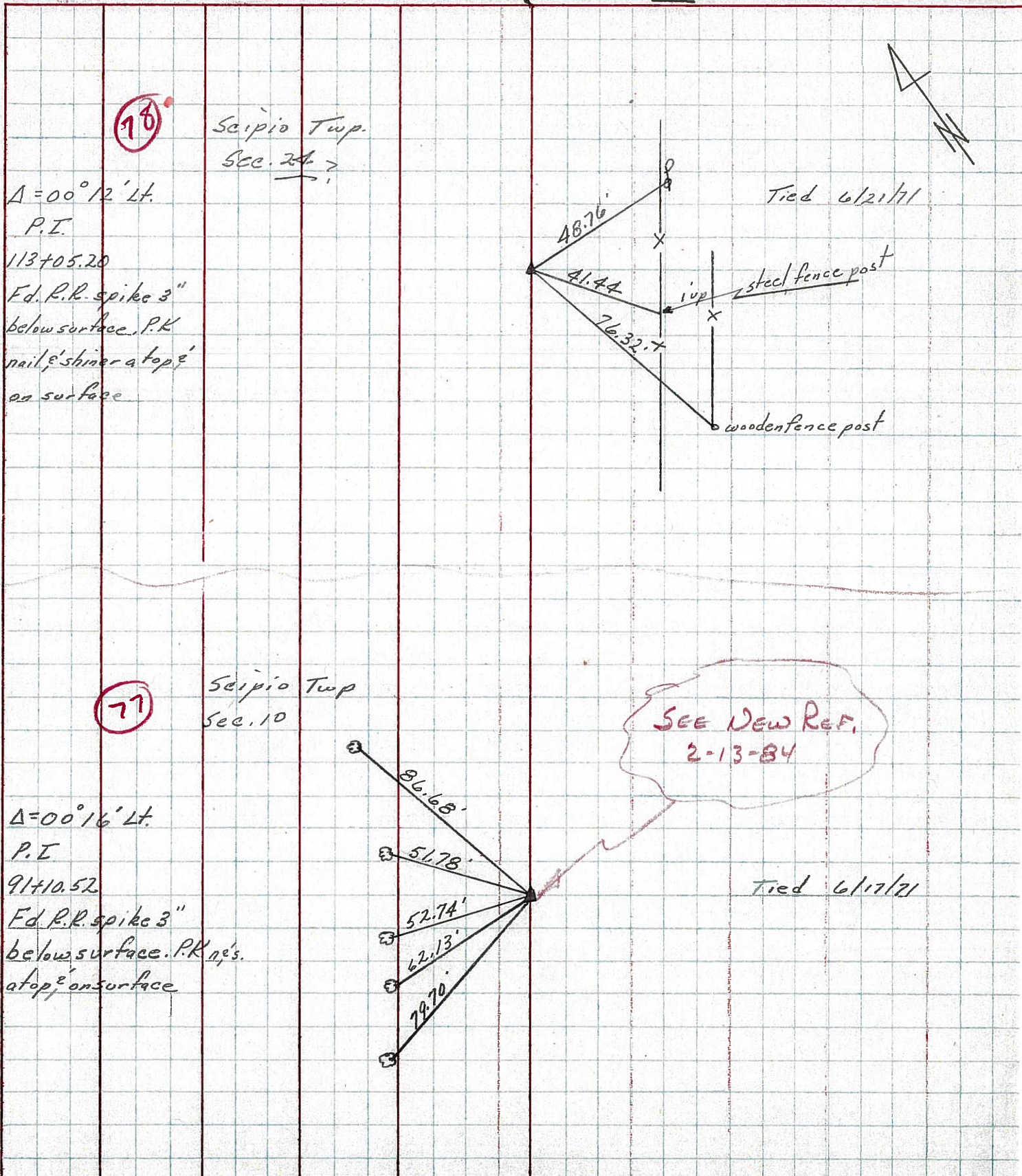
Scipio Twp
 Sec. 10



Tied 6/17/71

PERSONNEL	TITLE	PERSONNEL	TITLE	COUNTY	DATE
Asb				Seneca	11/16/72
Cronin				S. R. #18 (S.H. #267)	WEATHER overcast
Ripple				SEC. 4	TEMP. 32°
Anderson					

DESCRIPTION Ties for Control Points - Republic to Sandusky Co. Line JOB NO. _____



PERSONNEL	TITLE	PERSONNEL	TITLE	COUNTY	Seneca	DATE	11-8-68
Schneider		Potts		S. R.	18	WEATHER	Cloudy - snow
Mosser				SEC. Republic to Sen. Co. Line		TEMP.	35°
Barbour							
Redding							

DESCRIPTION Ties for Control Points JOB NO. _____

