

O.D.O.T. DISTRICT 2 SURVEY OFFICE (USE ONLY)

PERSONNEL

REFERENCE NO. 79

SHEET 10 OF 28

NOTES TRENKA

DATE 5-29-18

ROUTE SR 18

H.C. RHOADES

WEATHER SUNNY

COUNTY SENECA

R.C. TRENKA

TEMP. 80°

TOWNSHIP SCIPIO

SECTION 2

DWG BY JAMES PID 101281

T 2 N R 16 E

TYPE MONUMENT P.K./WASHER

ON SURFACE - ~~BELOW~~ ON

OFFSET 0.2' ~~LT~~ RT

10' TO RT EDGE PAVEMENT

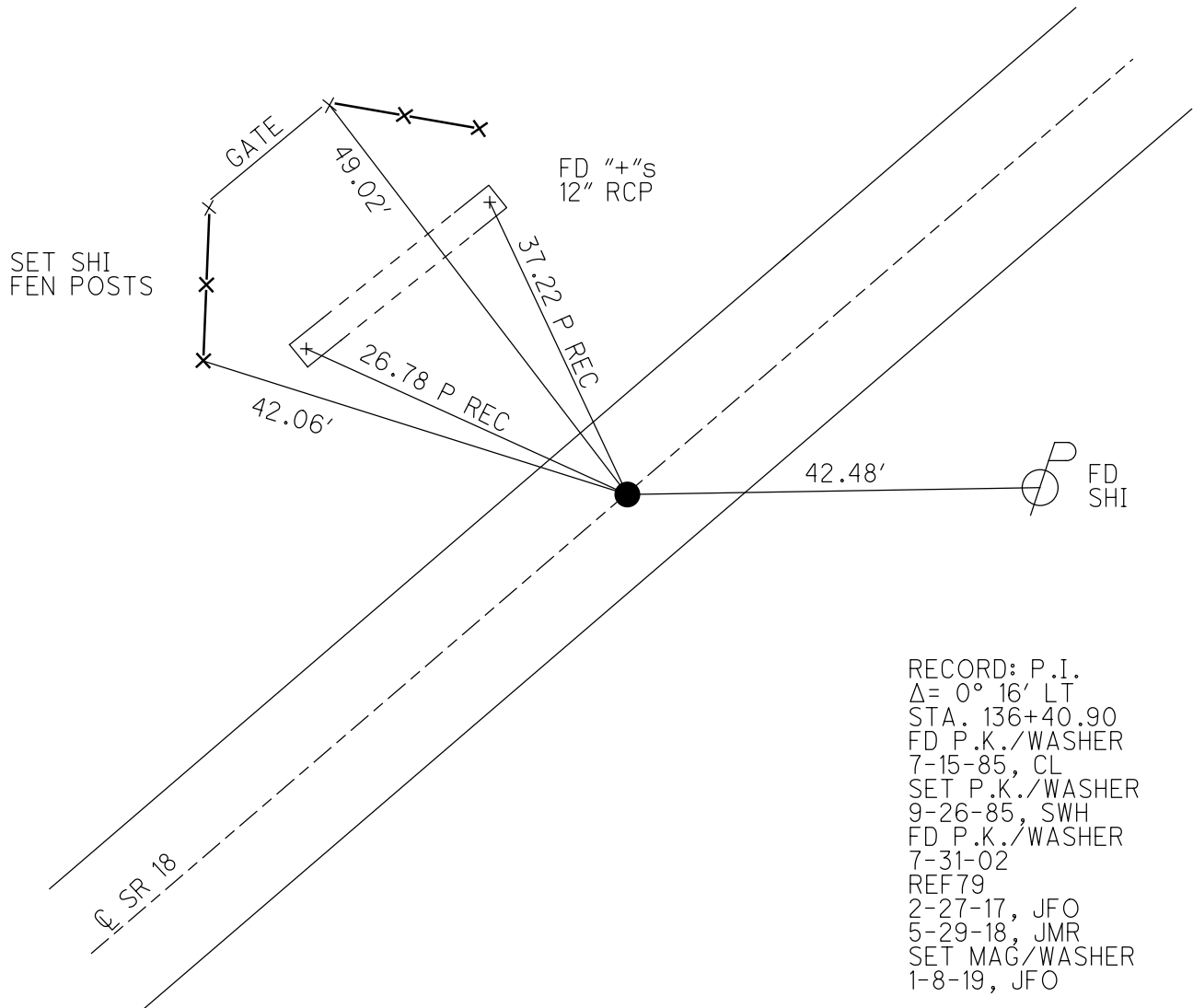
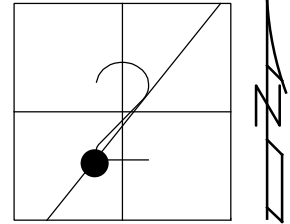
STATION: 1352+52.85

HORZ.DATUM: NAD83 2011

GEOID: NAVD88 2012A

GRID: NORTHING: 543439.441

EASTING: 1834167.070



RECORD: P.I.
 $\Delta = 0^\circ 16' \text{ LT}$
 STA. 136+40.90
 FD P.K./WASHER
 7-15-85, CL
 SET P.K./WASHER
 9-26-85, SWH
 FD P.K./WASHER
 7-31-02
 REF79
 2-27-17, JFO
 5-29-18, JMR
 SET MAG/WASHER
 1-8-19, JFO

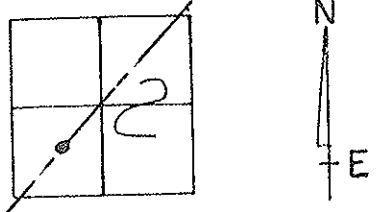
O.D.O.T. DISTRICT 2 SURVEY OFFICE

PERSONNEL _____ REFERENCE NO. 79 SHEET _____ OF _____

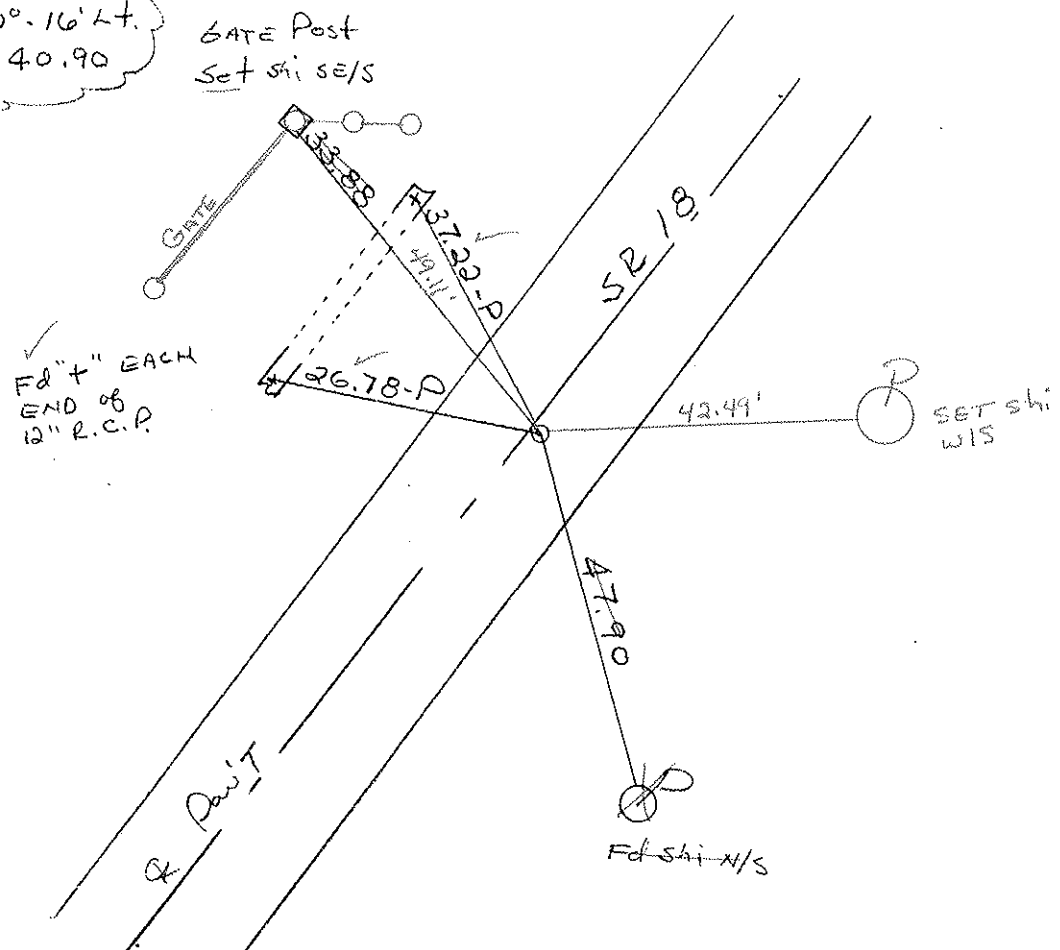
NOTES Hoffman ROUTE 18
 H.C. LOCHKE DATE 7-15-85 COUNTY SENECA
 R.C. BARNHISEL WEATHER Cloudy TOWNSHIP Scipio
 _____ TEMP. 75° SECTION 2
 _____ T 2 N R 16 E

TYPE MONUMENT P.K./WASHER
 ON SURFACE - ~~BELOW~~ yes
 LEFT - ~~C~~ PAV'T. - RIGHT 0.2
10.0 TO RT EDGE PAVEMENT
 S.L.M. 1356+69

Set P.K./WASHER
 9-26-85 SWH



RECORD:
 P.I.
 $\Delta = 0^\circ - 16' Lt.$
 136+40.90



Fd PK NAIL
 7-31-02
 MIB

Preventive Maintenance
 Chip & Seal 2002
 Existing Point Uncovered
 Date 12-05-02

O.D.O.T. DISTRICT 2 SURVEY OFFICE

PERSONNEL _____

REFERENCE NO. 79

SHEET _____ OF _____

NOTES Hoffman

H.C. Loehke

R.C. BARNHISEL

DATE 7-15-85

WEATHER Cloudy

TEMP. 75°

ROUTE 18

COUNTY SENECA

TOWNSHIP Scipio

SECTION 2

T _____ R _____

TYPE MONUMENT P.K./WASHER

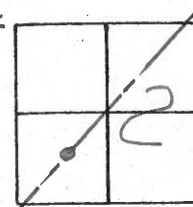
ON SURFACE - BELOW yes

LEFT - PAV'T. - RIGHT 0.2'

10.0 TO RT. EDGE PAVEMENT

S.L.M. 1356 + 69

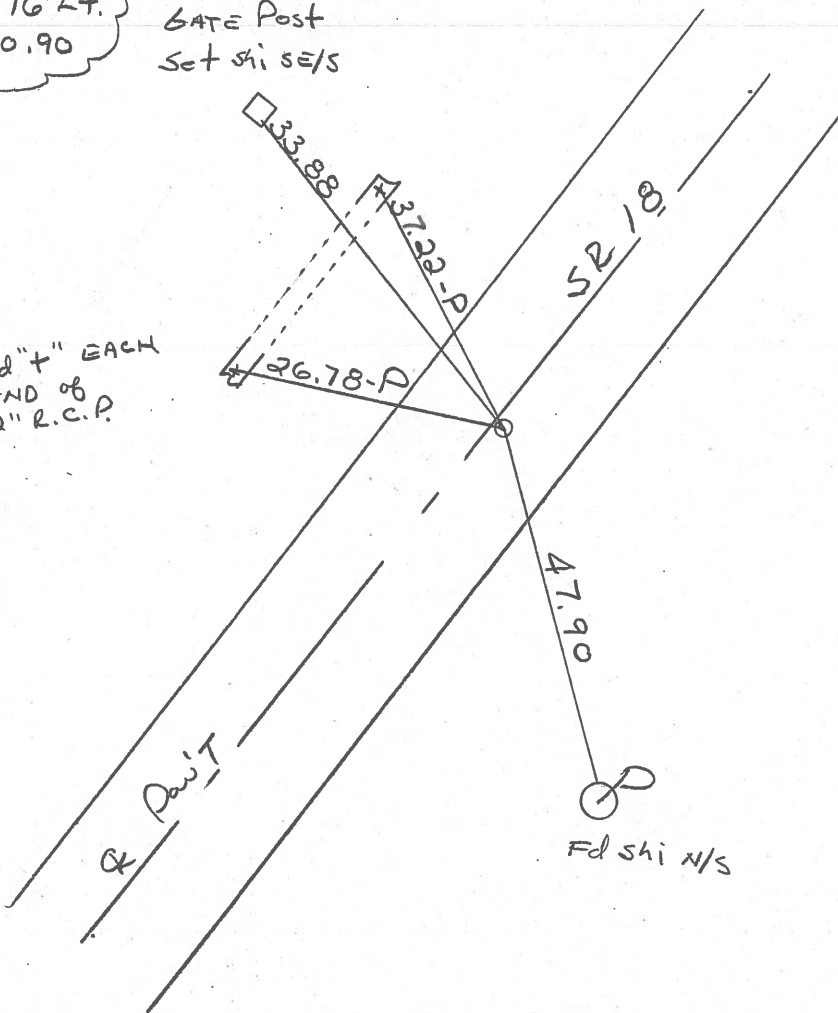
Set P.K./WASHER
9-26-85 SWH



RECORD:
P.I.
 $\Delta = 0^\circ - 16' 44''$
136 + 40.90

GATE Post
Set shi SE/S

Fd "t" EACH
END of
12" R.C.P.

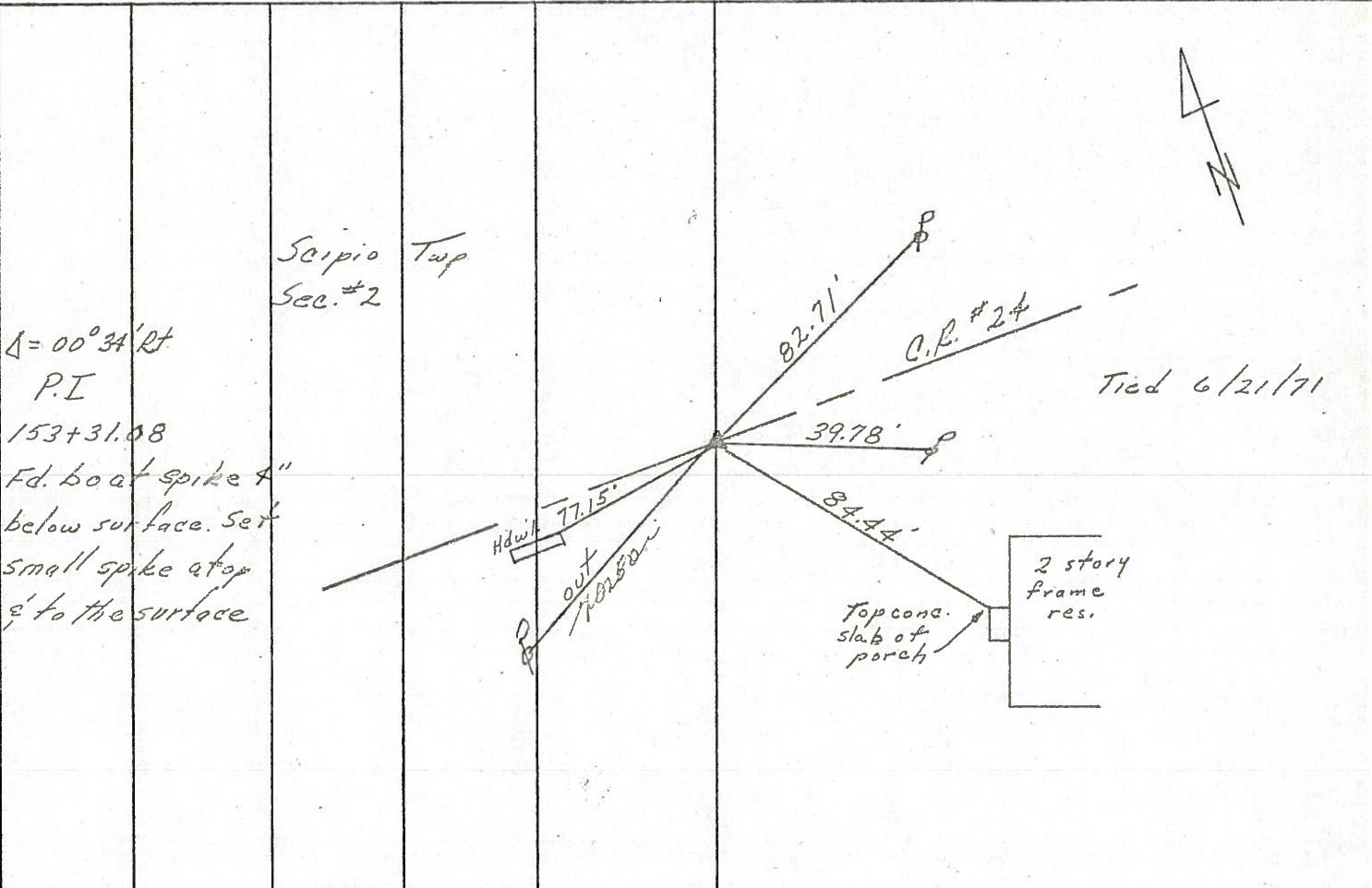


Fd shi N/S

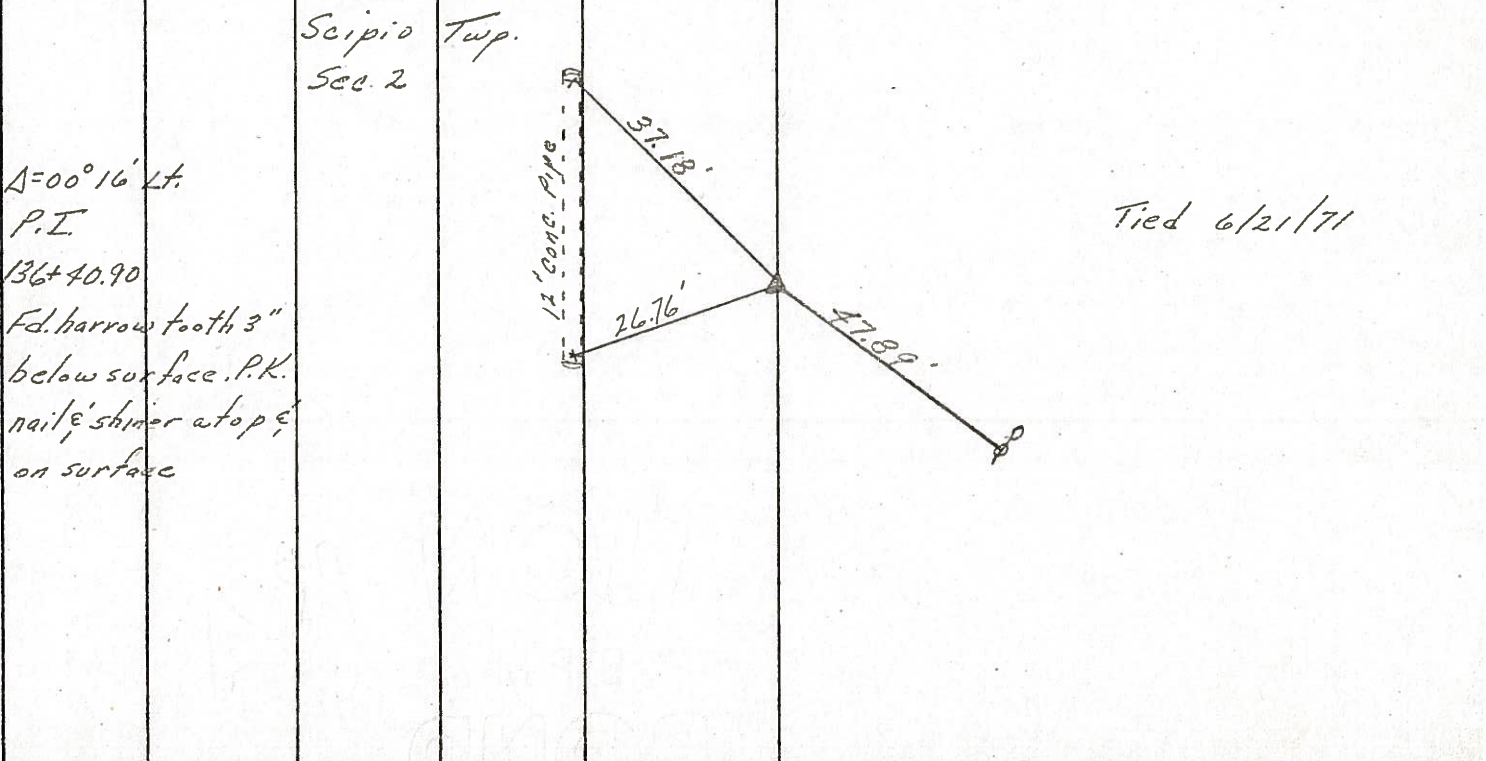
PERSONNEL	TITLE	PERSONNEL	TITLE	COUNTY	DATE
Ash				Seneaw	11/17/72
Cronin				S. R. #18 (S.R. #267)	WEATHER cloudy
Rypple				SEC. '4'	TEMP. 34°
Anderson					

DESCRIPTION Ties for Control Points - Republic to Sandusky Co. Line JOB NO. _____

80

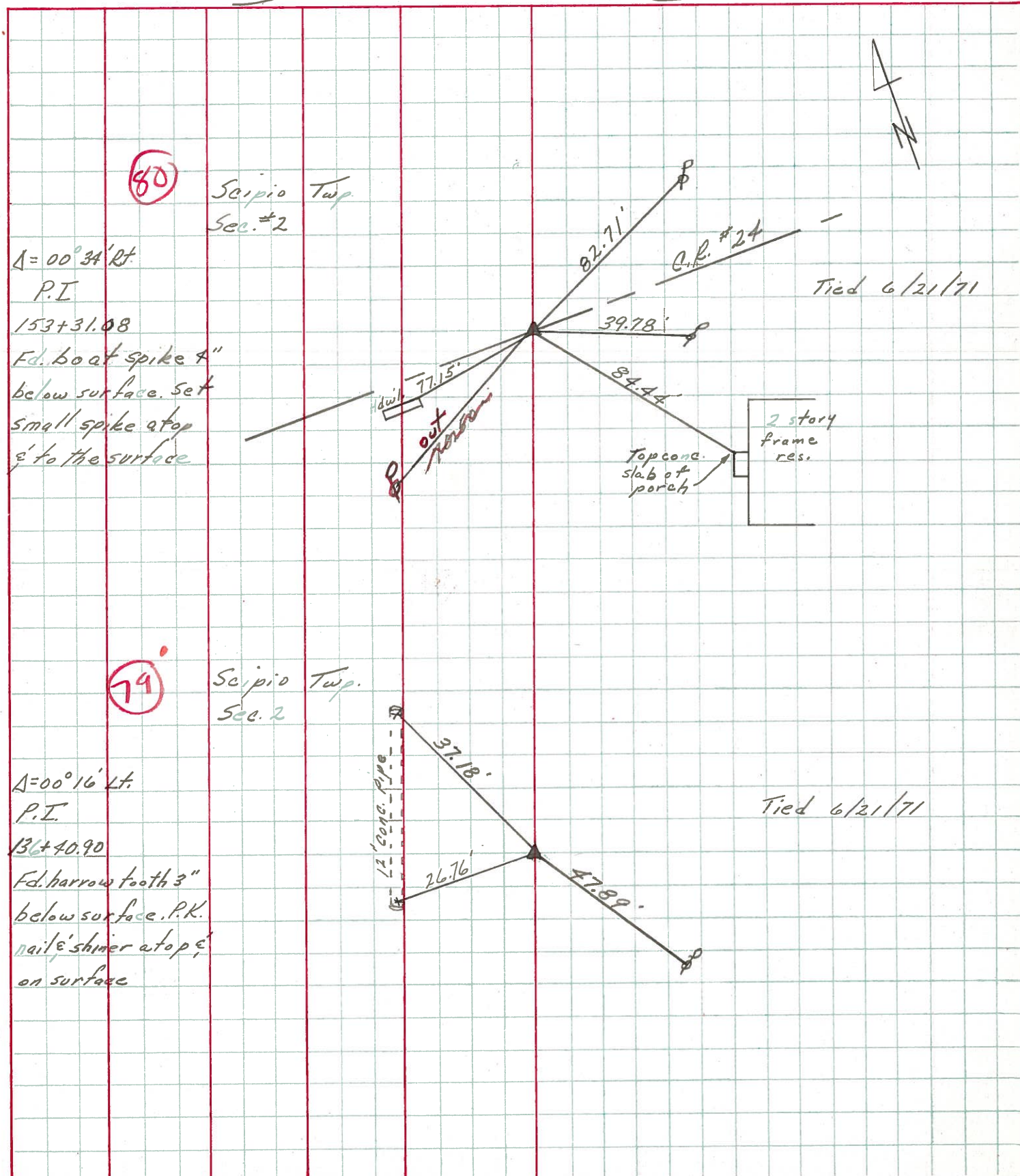


79



PERSONNEL	TITLE	PERSONNEL	TITLE	COUNTY	DATE
Ash				Seneca	11/17/72
Cronin				S. R. #18 (S.R. #267)	WEATHER cloudy
Ripple				SEC. '4'	TEMP. 34°
Anderson					

DESCRIPTION: Ties for Control Points - Republic to Sandusky Co. Line



PERSONNEL	TITLE	PERSONNEL	TITLE	COUNTY	DATE
<u>Schneider</u>		<u>Potts</u>		<u>Seneca</u>	<u>11-8-68</u>
<u>Mosser</u>				S. R. <u>1 B</u>	WEATHER <u>Cloudy-snow</u>
<u>Barbour</u>				SEC. <u>Republic to Sen. Co. Line</u>	TEMP. <u>35°</u>
<u>Redding</u>					

DESCRIPTION Ties for Control Points JOB NO. _____

80

153+31.08
 $\Delta = 0^\circ 34' \text{ Rt.}$
 P.K. Nail

8170

79

136+40.9
 P.K. Nail
 $\Delta = 0^\circ 16' \text{ Lt.}$

8169

78

113+05.2
 P.K. Nail
 $\Delta = 0^\circ 12' \text{ Lt.}$

8168

77

91+10.53
 P.K. Nail
 $\Delta = 0^\circ 16' \text{ Lt.}$

8167

