

O.D.O.T. DISTRICT 2 SURVEY OFFICE (USE ONLY)

PERSONNEL

REFERENCE NO. 80

SHEET 11 OF 28

NOTES TRENKA

DATE 5-29-18

ROUTE SR 18

H.C. RHOADES

WEATHER SUNNY

COUNTY SENECA

R.C. TRENKA

TEMP. 80°

TOWNSHIP SCIPIO

SECTION 2

DWG BY JAMES PID 101281

T 2 N R 16 E

TYPE MONUMENT P.K./WASHER

~~ON SURFACE~~ - BELOW 3"

OFFSET Q PAVEMENT ON LT : RT

- TO - EDGE PAVEMENT

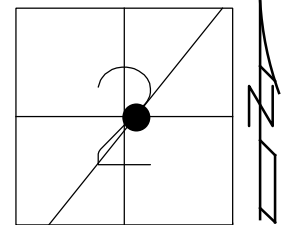
STATION: 1369+43.14

HORZ.DATUM: NAD83 2011

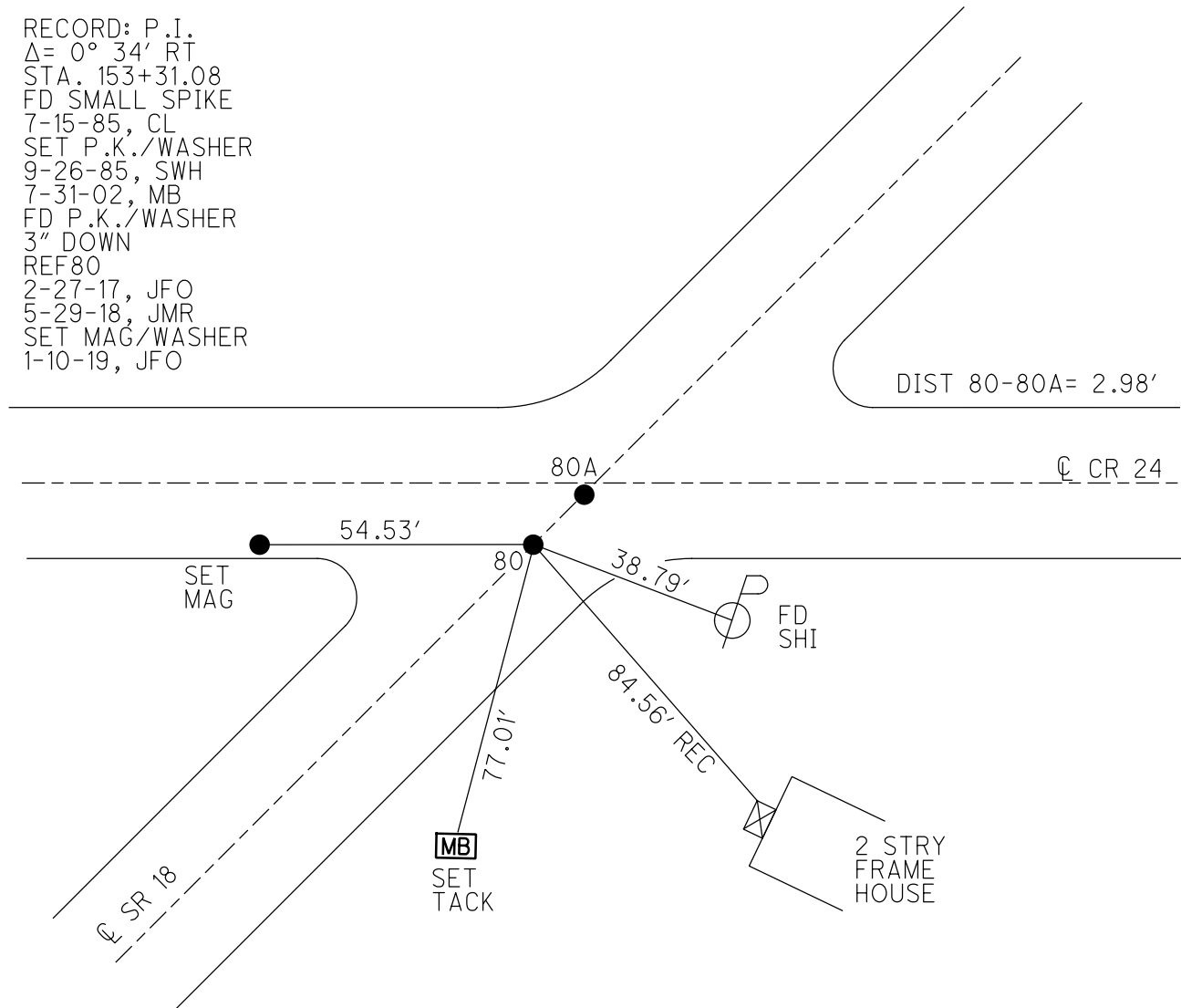
GEOID: NAVD88 2012A

GRID: NORTHING: 544841.816

EASTING: 1835110.693



RECORD: P.I.
 $\Delta = 0^\circ 34' RT$
 STA. 153+31.08
 FD SMALL SPIKE
 7-15-85, CL
 SET P.K./WASHER
 9-26-85, SWH
 7-31-02, MB
 FD P.K./WASHER
 3" DOWN
 REF80
 2-27-17, JFO
 5-29-18, JMR
 SET MAG/WASHER
 1-10-19, JFO



DIST 80-80A= 2.98'

Q CR 24

54.53'

80A

80

38.79'

84.56' REC

77.01'

SET MAG

FD SHI

MB
SET TACK

2 STRY
FRAME
HOUSE

Q SR 18

O.D.O.T. DISTRICT 2 SURVEY OFFICE

PERSONNEL _____

REFERENCE NO. 80

SHEET _____ OF _____

NOTES Loffman

H.C. Loehcke

R.C. BARNHISEL

DATE 7-15-85

WEATHER Cloudy

TEMP. 75°

ROUTE 18

COUNTY Seneca

TOWNSHIP Scipio

SECTION 2

T2 NR 16 E

TYPE MONUMENT SMALL SPK (A)

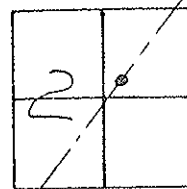
ON SURFACE - BELOW Yes

LEFT - to PAVT. - RIGHT Yes [3.5' S of Rd 24 EAST]

TO EDGE PAVEMENT

S.L.M. 1373+57

Set P.K./WASHER @ BOTH POINTS 7-26-85 SLOK



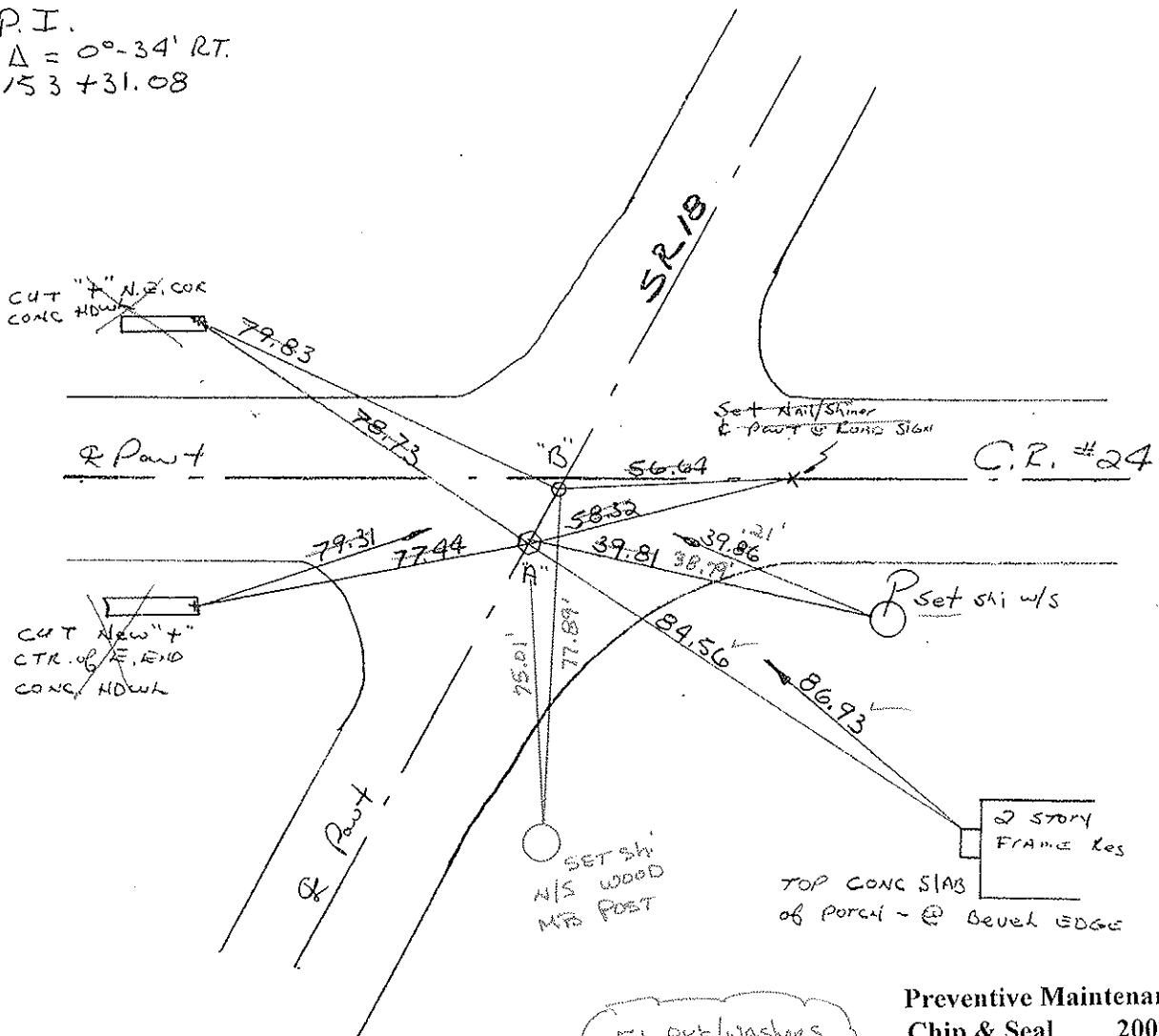
Record: (A)

P.I.

$\Delta = 0^{\circ}-34' RT.$

153 + 31.08

"B" = Fd P.K. @ SURFACE - ORIGIN UNKNOWN
2.96' North of "A"



Fd P.K./WASHERS
 7-31-02
 MB

Preventive Maintenance
 Chip & Seal 2002
 Existing Point Uncovered
 Date 12-05-02

O.D.O.T. DISTRICT 2 SURVEY OFFICE

PERSONNEL

REFERENCE NO. 80

SHEET OF

NOTES Hoffman

H.C. LOEHKE

DATE 7-15-85

ROUTE 18

R.C. BAHNISEH

WEATHER Cloudy

COUNTY Seneca

TEMP. 75°

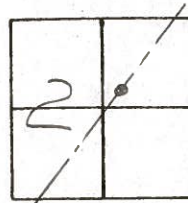
TOWNSHIP Scipio

SECTION 2

T 2 N 16 E

TYPE MONUMENT SMALL SPK (A)
 ON SURFACE - BELOW yes
 LEFT- & PAV'T. - RIGHT yes [3.5' S of Rd 24 EAST]
 TO EDGE PAVEMENT
 S.L.M. 1373+57

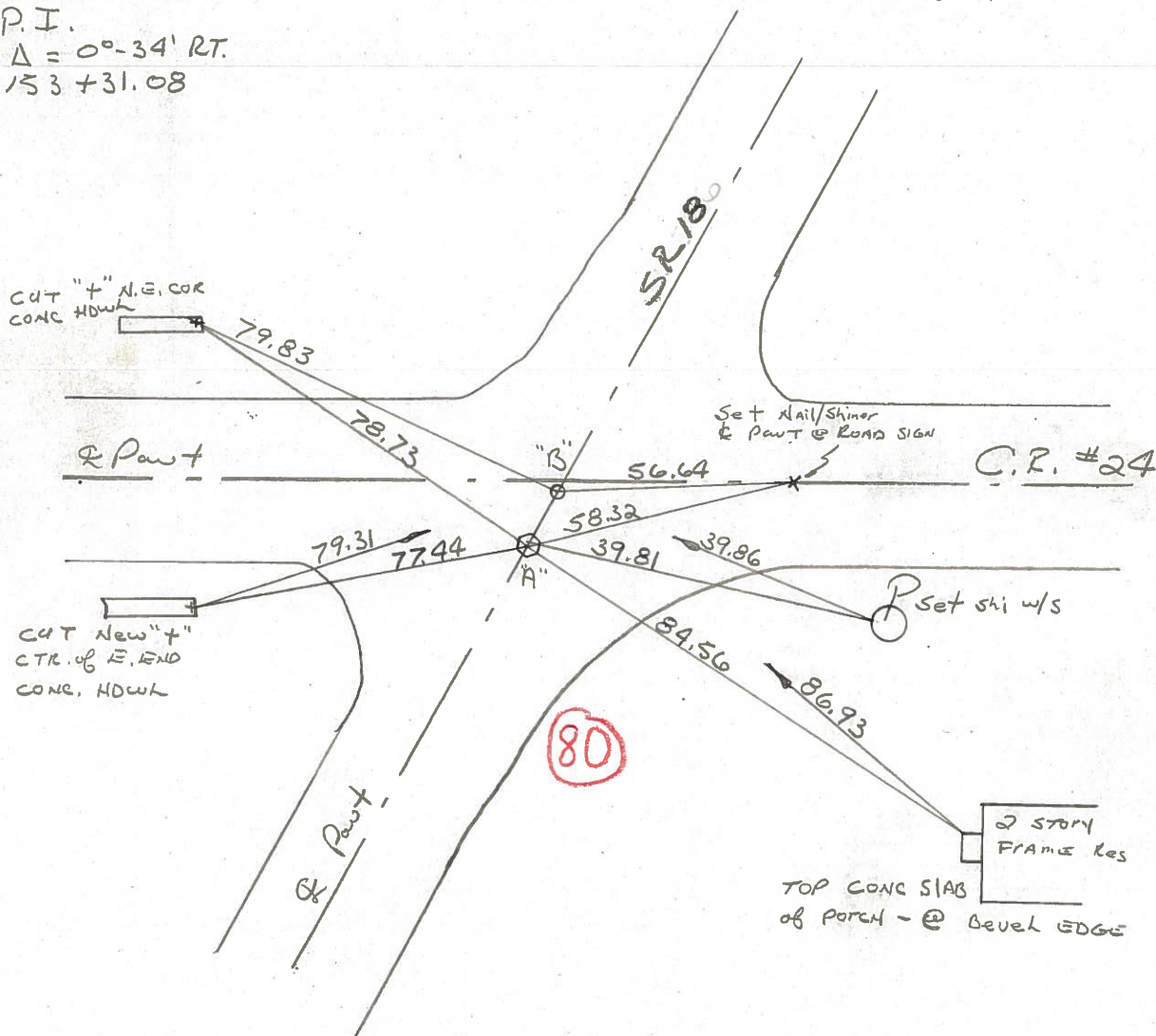
Set P.K./WASHER
 @ BOTH POINTS
 9-26-85
 SCAL



Record: (A)

P.I.
 $\Delta = 0^\circ - 34' RT.$
 153 + 31.08

"B" = Fd P.K. @ SURFACE - ORIGIN UNKNOWN
 2.96' Northerly of "A"



PERSONNEL	TITLE	PERSONNEL	TITLE	COUNTY	DATE
Ash				Seneca	11/17/72
Cronin				S. R. #18 (S.R. #267)	WEATHER cloudy
Pypple				SEC. 4	TEMP. 34°
Anderson					

DESCRIPTION Ties for Control Points - Republic to Sandosky Co. Line JOB NO. _____

80

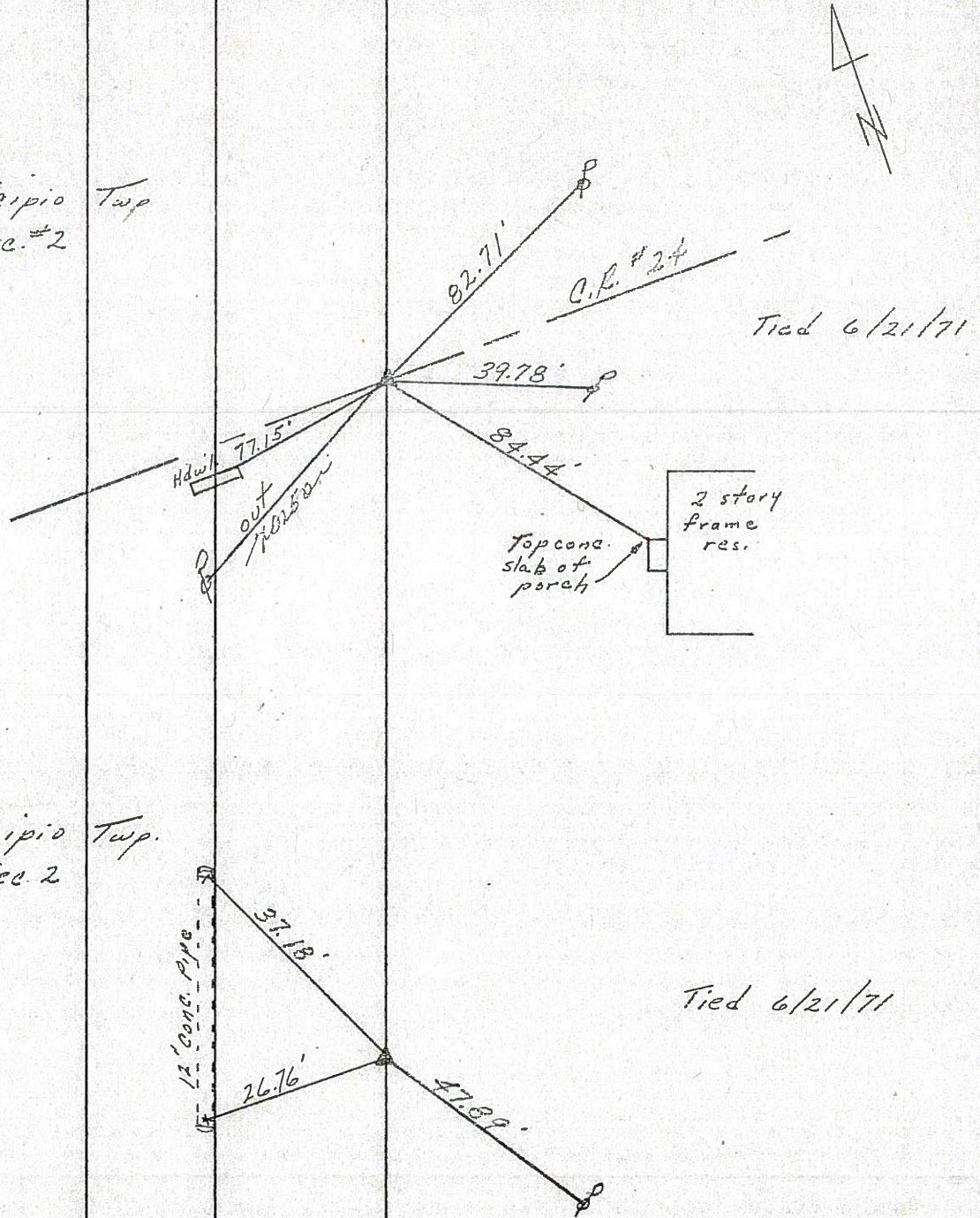
$\Delta = 00^{\circ}34'RT$
 P.I.
 153+31.08
 Fd. boat spike 4"
 below surface. Set
 small spike atop
 & to the surface

Scipio Twp.
 Sec. #2

Scipio Twp.
 Sec. 2

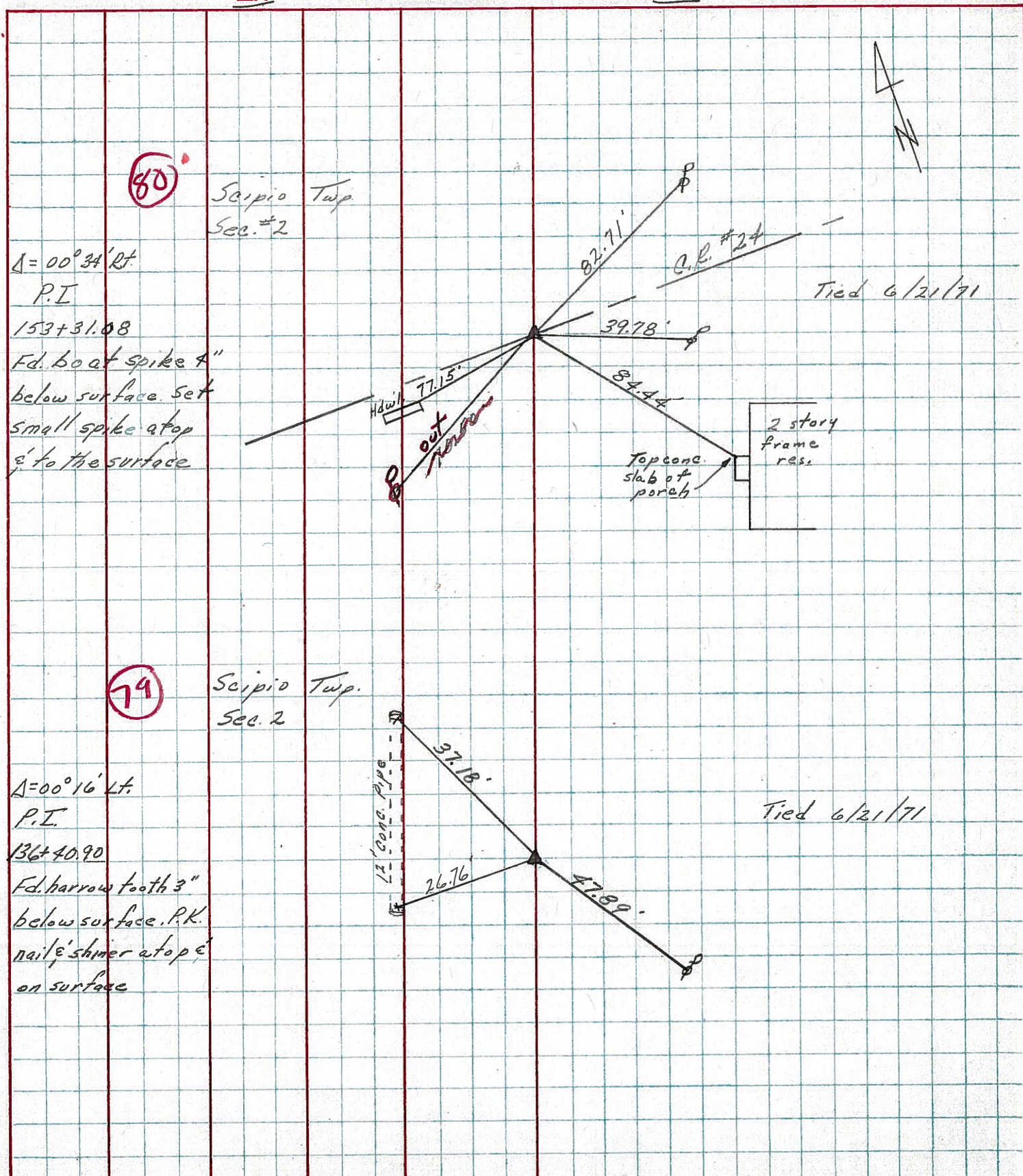
$\Delta = 00^{\circ}16'Lt.$
 P.I.
 136+40.90
 Fd. harrow tooth 3"
 below surface. P.K.
 nail & shiner atop &
 on surface

79



PERSONNEL	TITLE	PERSONNEL	TITLE	COUNTY	DATE
Ash				Seneca	11/17/72
Cronin				S. R. #18 (S.R. #267)	WEATHER cloudy
Lypple				SEC. '4'	TEMP. 34°
Anderson					

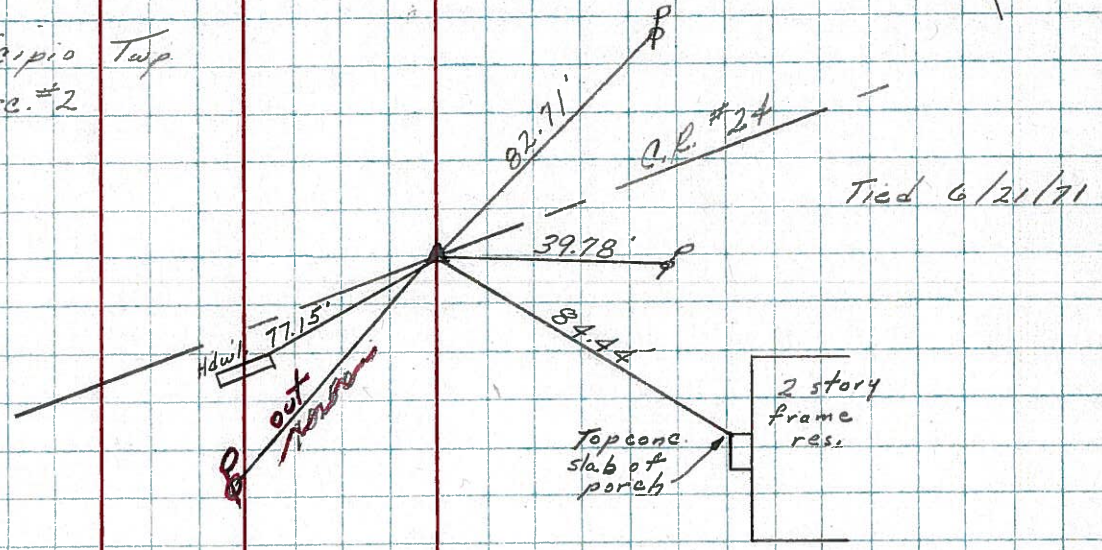
DESCRIPTION Ties for Control Points - Republic to Sandusky Co. Line JOB NO. _____



70

Scipio Twp.
Sec. #2

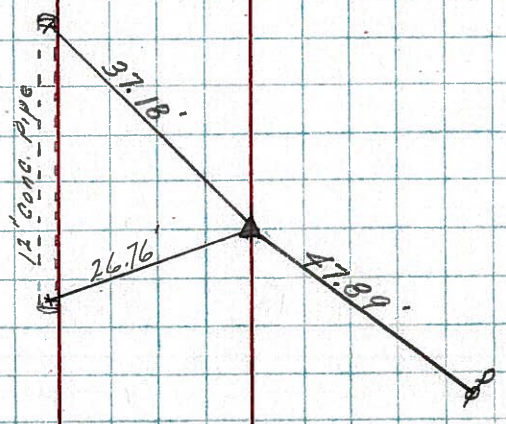
$\Delta = 00^\circ 34' \text{ Rt.}$
P.I.
153 + 31.08
Fd. boat spike 4"
below surface. Set
small spike at top
& to the surface



79

Scipio Twp.
Sec. 2

$\Delta = 00^\circ 16' \text{ Lt.}$
P.I.
136 + 40.90
Fd. harrow tooth 3"
below surface. P.K.
nail & shiner at top &
on surface



PERSONNEL	TITLE	PERSONNEL	TITLE	COUNTY	Seneca	DATE	11-8-68
Schneider		Potts		S. R.	18	WEATHER	Cloudy-snow
Mosser				SEC. Republic to Sen. Co. Line		TEMP.	35°
Barbour							
Redding							
DESCRIPTION	Ties for Control Points				JOB NO.		

