

O.D.O.T. DISTRICT 2 SURVEY OFFICE (USE ONLY)

PERSONNEL

REFERENCE NO. 81

SHEET 13 OF 28

NOTES TRENKA

DATE 5-29-18

ROUTE SR 18

H.C. RHOADES

WEATHER SUNNY

COUNTY SENECA

R.C. TRENKA

TEMP. 80°

TOWNSHIP SCIPIO

SECTION 2

DWG BY JAMES PID 101281

T 2 N R 16 E

TYPE MONUMENT P.K./WASHER

~~ON SURFACE~~ - BELOW 3"

OFFSET 0.6' RT : RT

9.5' TO RT EDGE PAVEMENT

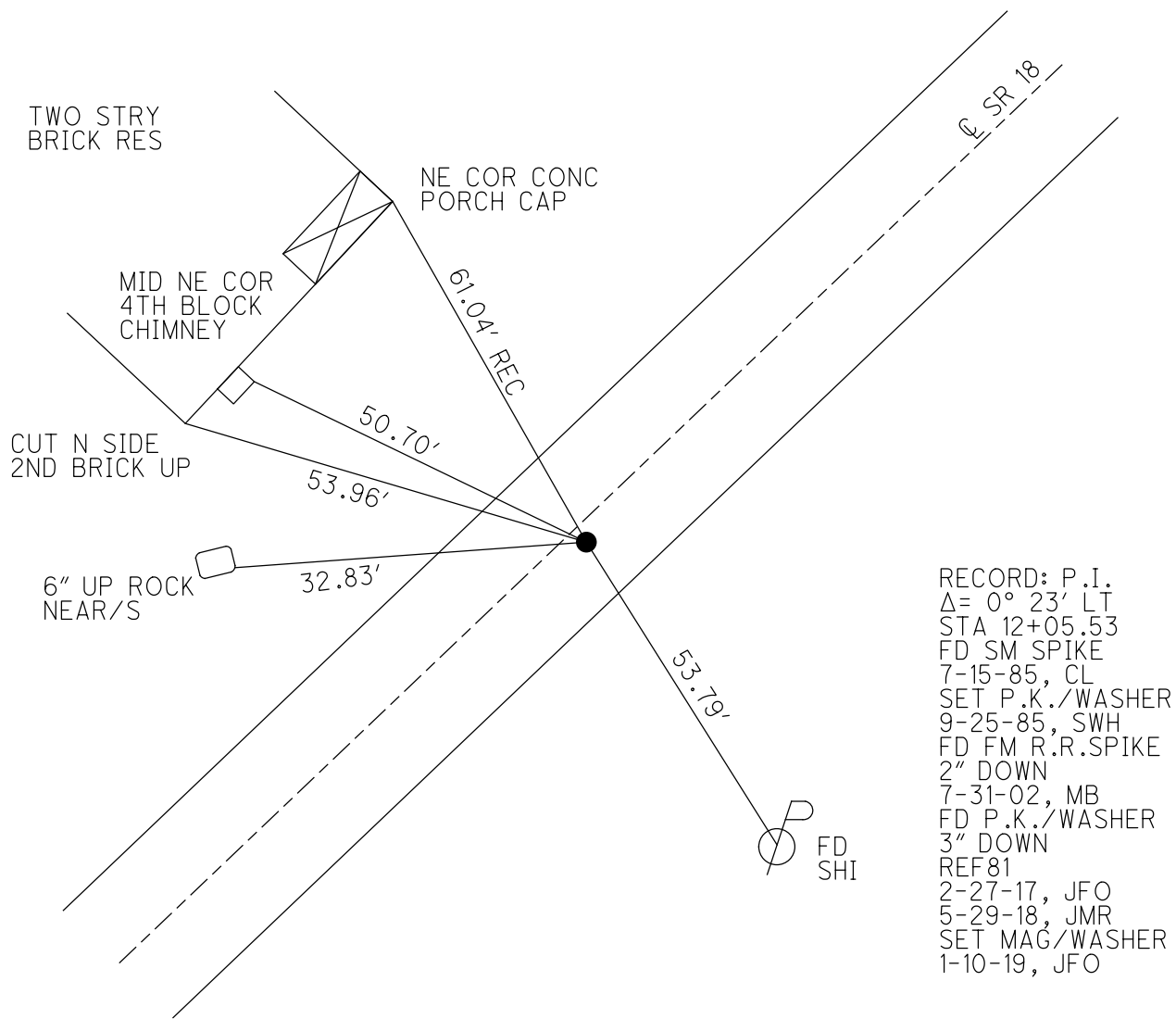
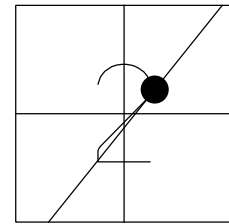
STATION: 1381+50.64

HORZ.DATUM: NAD83 2011

GEOID: NAVD88 2012A

GRID: NORTHING: 545837.450

EASTING: 1835793.888



RECORD: P.I.  
 $\Delta = 0^\circ 23' \text{ LT}$   
 STA 12+05.53  
 FD SM SPIKE  
 7-15-85, CL  
 SET P.K./WASHER  
 9-25-85, SWH  
 FD FM R.R.SPIKE  
 2" DOWN  
 7-31-02, MB  
 FD P.K./WASHER  
 3" DOWN  
 REF81  
 2-27-17, JFO  
 5-29-18, JMR  
 SET MAG/WASHER  
 1-10-19, JFO



# O.D.O.T. DISTRICT 2 SURVEY OFFICE

PERSONNEL \_\_\_\_\_

REFERENCE NO. 81

SHEET \_\_\_\_\_ OF \_\_\_\_\_

NOTES Hoffman

H.C. LOENKLE

DATE 7-15-85

ROUTE 18

R.C. BARNHISEL

WEATHER Cloudy

COUNTY SENESCA

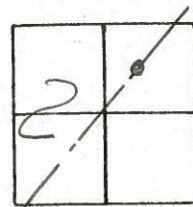
TEMP. 75°

TOWNSHIP Scipio

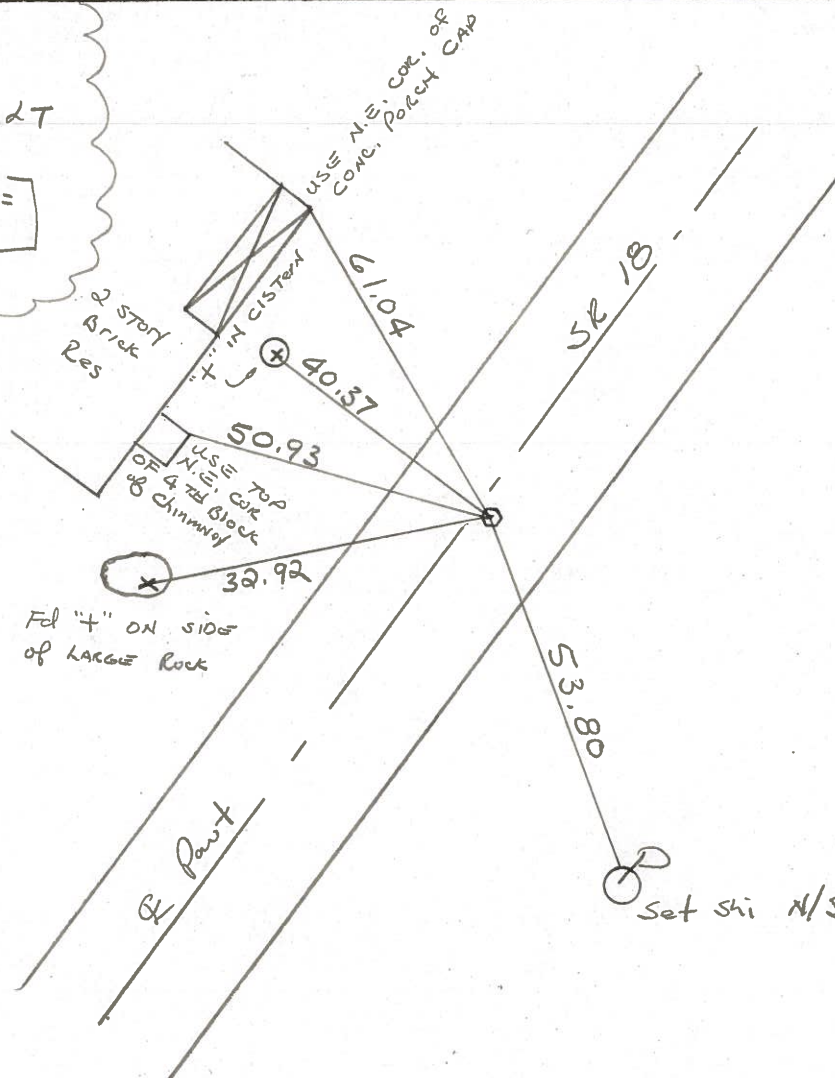
SECTION 2

T 2 N R 16 E

TYPE MONUMENT SMALL SPK Set P.K./WASHER  
 ON SURFACE - ~~BELOW~~ yes 9-25-85 SWN  
~~LEFT - L PAV'T.~~ - RIGHT 0.6  
9.5 TO RT EDGE PAVEMENT  
 S.L.M. 1385+68



Record:  
 P.I.  
 $\Delta = 0^\circ - 23' 27''$   
 12. + 05.53  
 [ 153 + 31.08 BK = ]  
 0 + 00 AH



Fd "t" ON SIDE  
 OF LARGE ROCK

Set shi N/S

PERSONNEL	TITLE	PERSONNEL	TITLE	COUNTY	DATE
Ash				Seneca	11/17/72
Cronin				S. R. #18 (S.H. #267)	WEATHER overcast
Ripple				SEC. H	TEMP. 34°
Anderson					

DESCRIPTION Ties for Control Points - Republic to Sandosky Co. line JOB NO. \_\_\_\_\_

LEFT

CENTER LINE

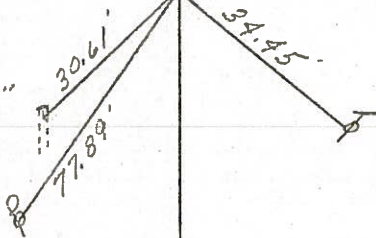
RIGHT

(82)

$\Delta = 00^\circ 25' \text{ Rt.}$   
 P.I.  
 42+39  
 Fd. R.R. spike  $1\frac{1}{2}''$   
 below surface. P.K.  
 nail & shiner at top  
 on surface

Adams Twp.  
 Sec. #36

x in 12"  
 C.M.P.



Tied 6/21/71

(81)

$\Delta = 00^\circ 23' \text{ Lt.}$   
 P.I.  
 12+05.53  
 Fd. R.R. spike  $1\frac{1}{2}''$   
 below surface. Set  
 small spike at top

Scipio Twp.  
 Sec. #2

2 story  
 brick  
 res.

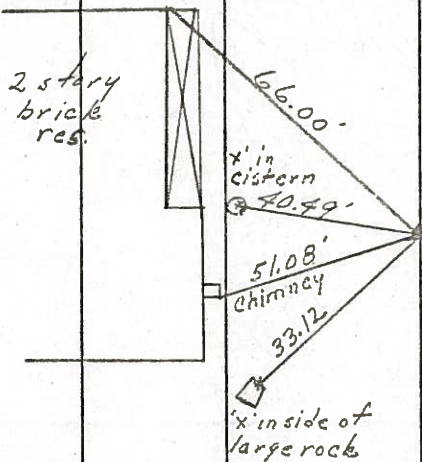
x in  
 cistern

50.49'

51.08'  
 chimney

33.12'

x inside of  
 large rock



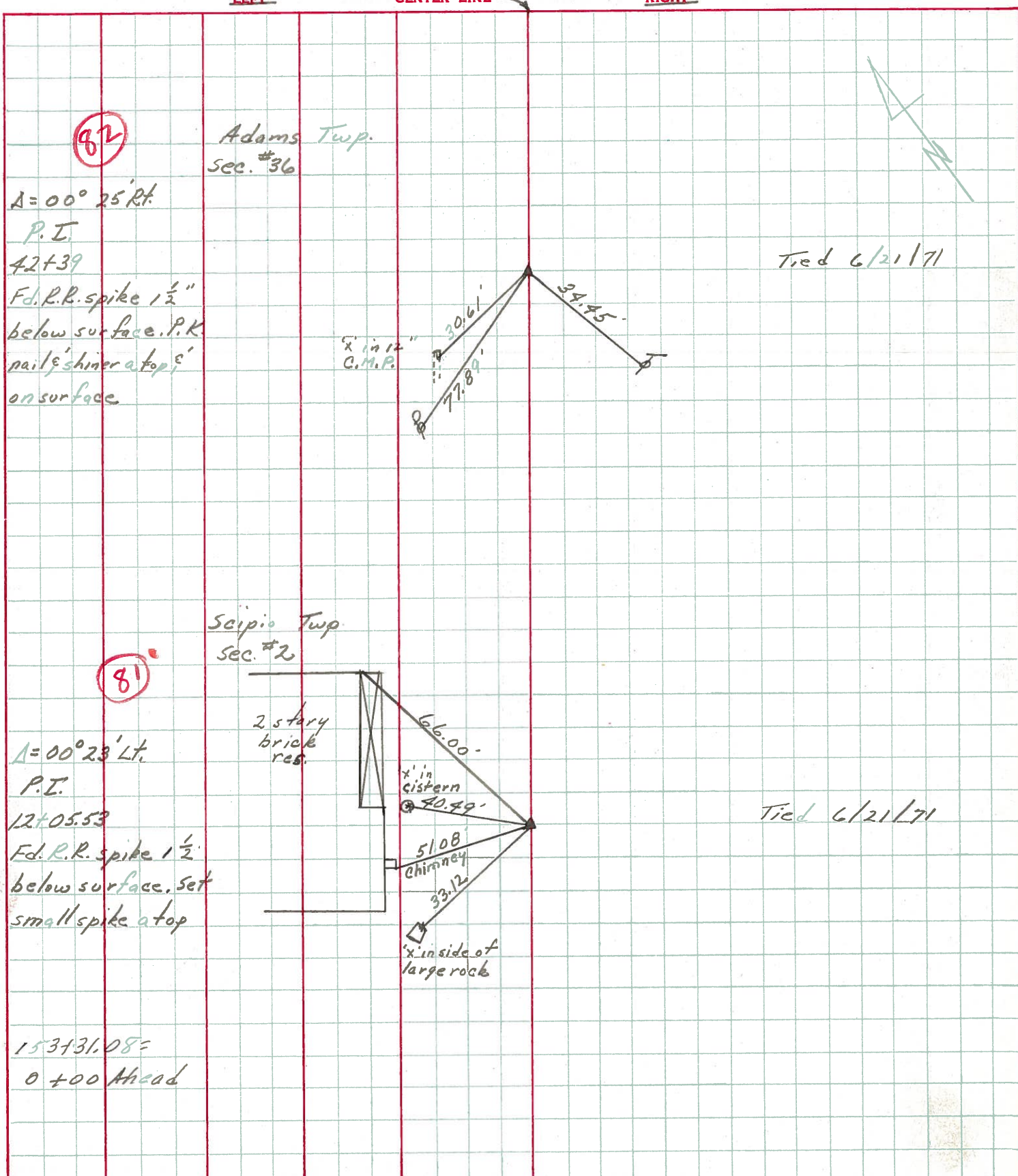
Tied 6/21/71

153+31.08'  
 0 +00 Ahead



PERSONNEL	TITLE	PERSONNEL	TITLE	COUNTY	DATE
Ash				Seneca	11/17/72
Cronin				S. R. #18 (S.H. #267)	WEATHER overcast
Ripple				SEC. 4	TEMP. 34°
Anderson					

DESCRIPTION Ties for Control Points - Republic to Sandosky Co. Line JOB NO. \_\_\_\_\_



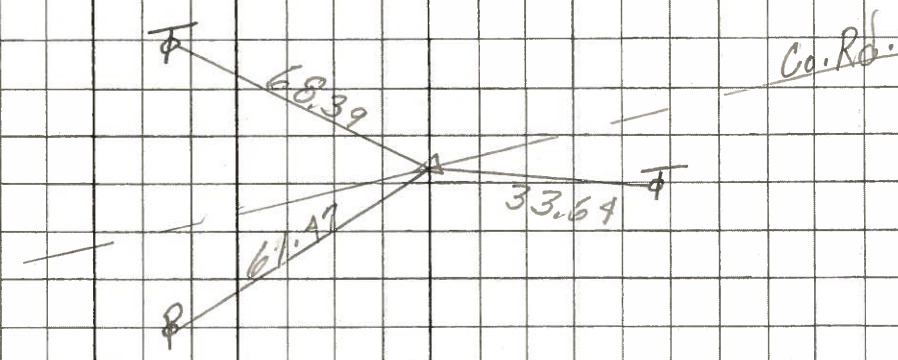
PERSONNEL	TITLE	PERSONNEL	TITLE	COUNTY	Seneca	DATE	11-12-68
Schneider		Potts		S. R.	18	WEATHER	Cold - snow
Mosser				SEC. Republic to Sen. Co. Line		TEMP.	38°
Barbour							
Redding							

DESCRIPTION Ties for Control Points JOB NO. \_\_\_\_\_

85

97+17.45  
P.K. Nail  
 $\Delta = 0^\circ 21' Lt$

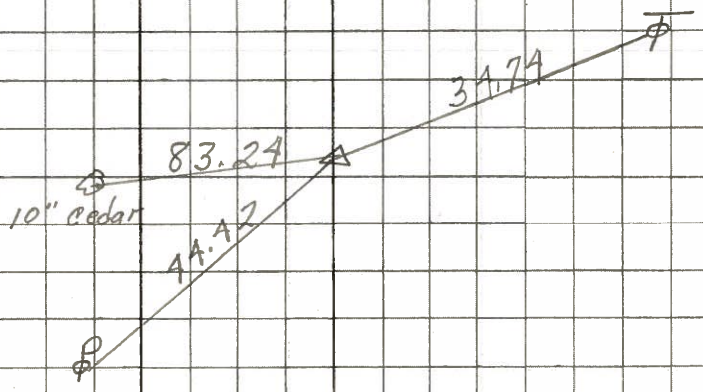
8174



84

72+05.52  
P.K. Nail  
 $\Delta = 0^\circ 19' Rt.$

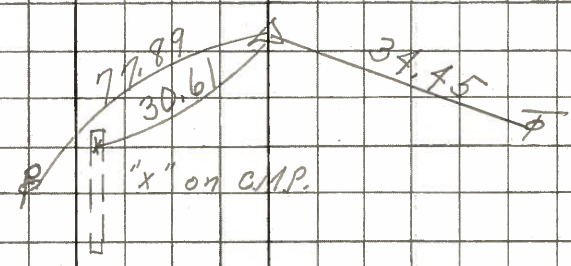
8173



82

42+39  
 $\Delta = 0^\circ 25' Rt.$   
P.K. Nail

8172



81

12+05.53  
P.K. Nail  
 $\Delta = 0^\circ 23' Lt.$

8171

