

O.D.O.T. DISTRICT 2 SURVEY OFFICE (USE ONLY)

PERSONNEL

REFERENCE NO. 82

SHEET 15 OF 28

NOTES RHOADES

DATE 5-29-18

ROUTE SR 18

H.C. O'DONNELL

WEATHER SUNNY

COUNTY SENECA

R.C. HAGEMEYER  
TRENKA

TEMP. 80°

TOWNSHIP ADAMS

DWG BY JAMES PID 101281

SECTION 36

T 2 N R 16 E

TYPE MONUMENT P.K./WASHER

~~ON SURFACE~~ - BELOW 3"

OFFSET  $\odot$  PAVEMENT 0.3' ~~RT~~ : RT

9.5' TO RT EDGE PAVEMENT

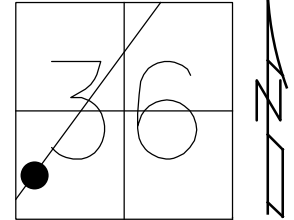
STATION: 1411+82.10

HORZ. DATUM: NAD83 2011

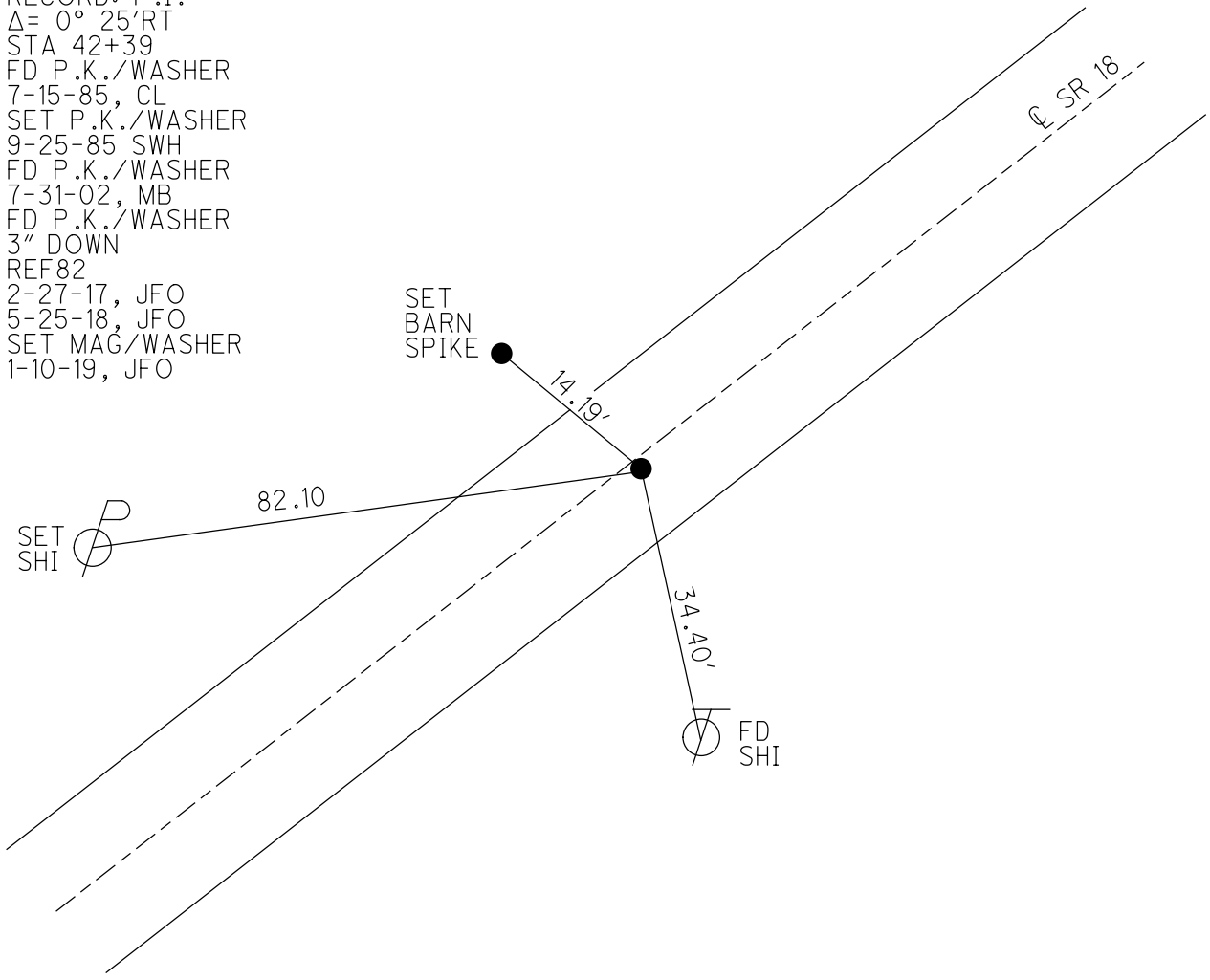
GEOID: NAVD88 2012A

GRID: NORTHING: 548347.013

EASTING: 1837494.435



RECORD: P.I.  
 $\Delta = 0^\circ 25' RT$   
 STA 42+39  
 FD P.K./WASHER  
 7-15-85, CL  
 SET P.K./WASHER  
 9-25-85 SWH  
 FD P.K./WASHER  
 7-31-02, MB  
 FD P.K./WASHER  
 3" DOWN  
 REF 82  
 2-27-17, JFO  
 5-25-18, JFO  
 SET MAG/WASHER  
 1-10-19, JFO



# O.D.O.T. DISTRICT 2 SURVEY OFFICE

PERSONNEL

REFERENCE NO. 82

SHEET \_\_\_\_\_ OF \_\_\_\_\_

NOTES Hoffman

H.C. LOENKKE

R.C. BARNHISEL

DATE 7-15-85

WEATHER Cloudy

TEMP. 75°

ROUTE 18

COUNTY SENECA

TOWNSHIP ADAMS

SECTION 36

T3 NR 16 E

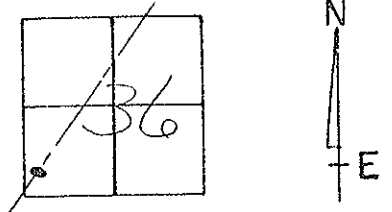
TYPE MONUMENT P.K. Set P.K./WASHER

ON SURFACE - ~~BELOW~~ Yes 9-25-85 scok

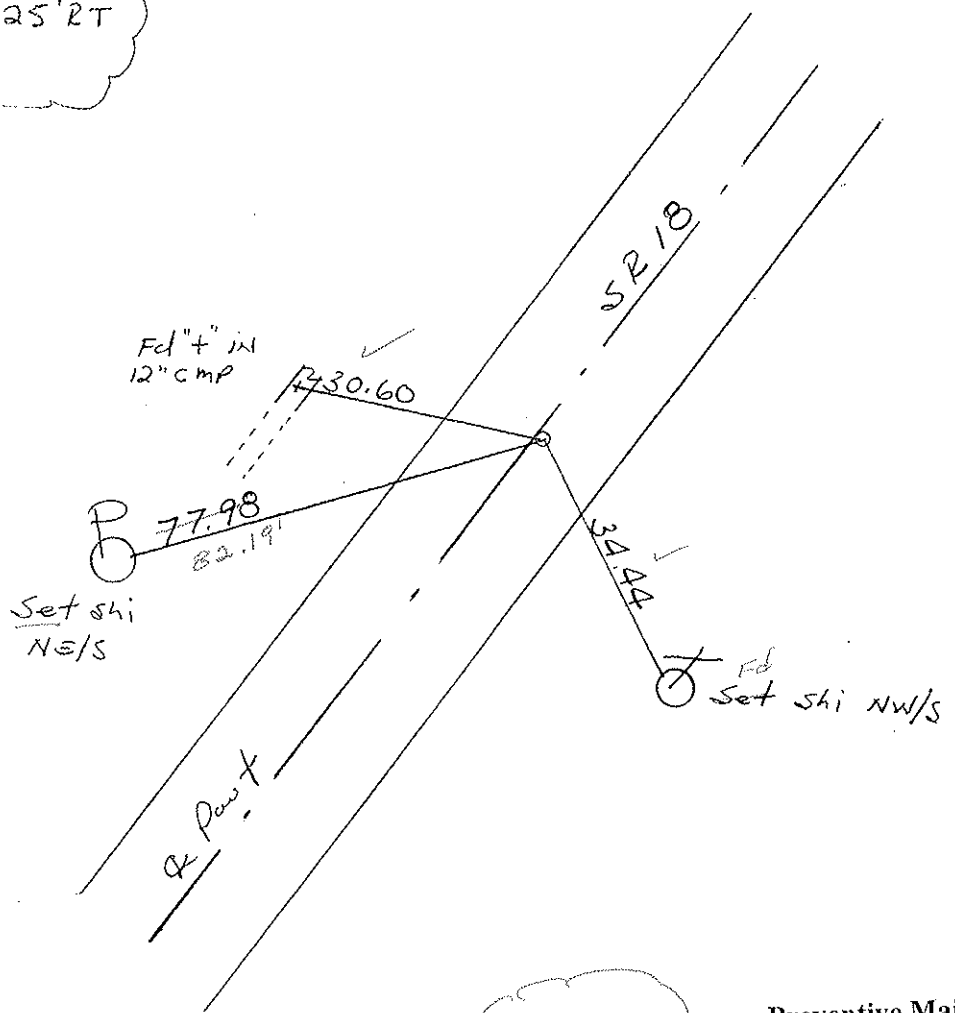
~~LEFT - RIGHT~~ PAV'T. - RIGHT 0.3

9.5 TO RT. EDGE PAVEMENT

S.L.M. 1416 + 02



Record!  
 P.I.  
 $\Delta = 0^\circ - 25' RT$   
 42+39



Fd PK NAIL  
 7-31-02  
 MB

Preventive Maintenance  
 Chip & Seal 2002  
 Existing Point Uncovered  
 Date 12-05-02

# O.D.O.T. DISTRICT 2 SURVEY OFFICE

PERSONNEL \_\_\_\_\_

REFERENCE NO. 82

SHEET \_\_\_\_\_ OF \_\_\_\_\_

NOTES Hoffman

H.C. LOENKKE

DATE 7-15-85

ROUTE 18

R.C. BARNHISEL

WEATHER Cloudy

COUNTY SENECA

TEMP. 75°

TOWNSHIP ADAMS

SECTION 36

T3 NR 16 E

TYPE MONUMENT P.K.

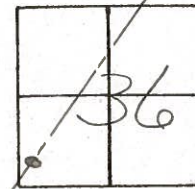
*Set P.K./WASHER  
9-25-85 SWK*

ON SURFACE - ~~BELOW~~ yes

~~LEFT - C PAV'T.~~ - RIGHT 0.3

9.5 TO RT EDGE PAVEMENT

S.L.M. 1416 + 02

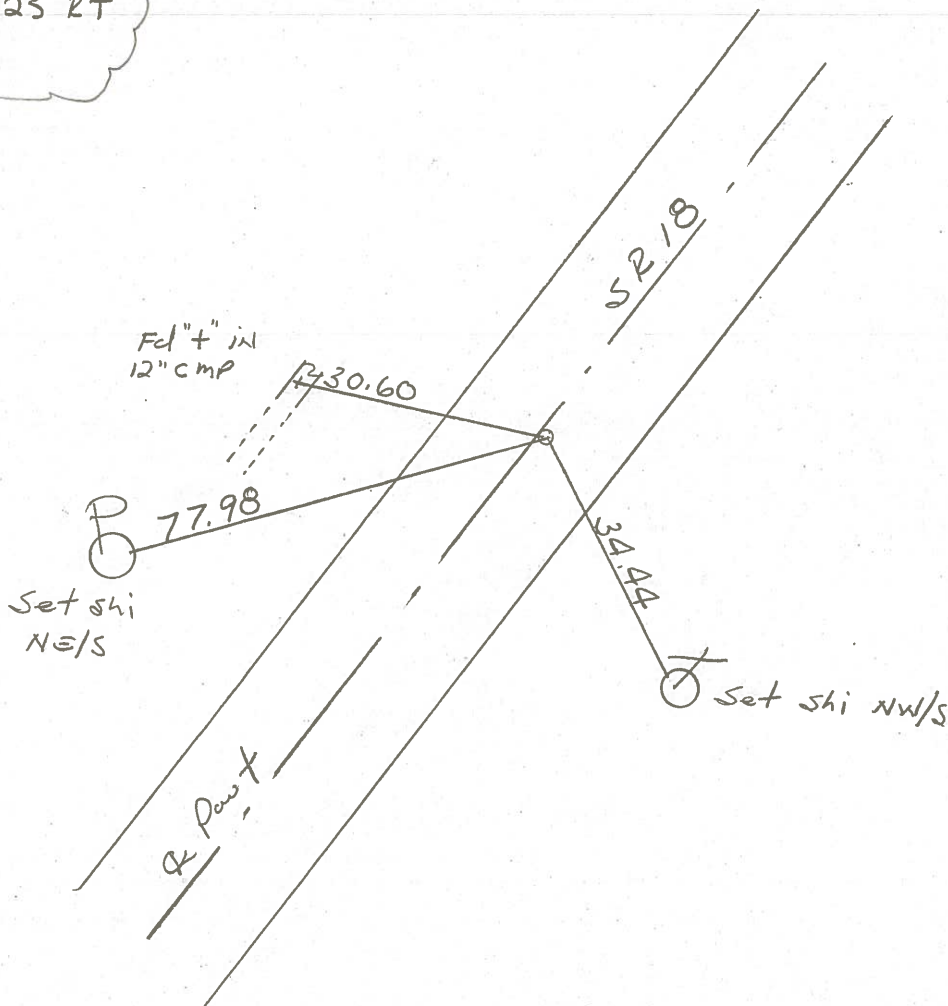


Record!

P.I.

$\Delta = 0^\circ - 25' 27''$

42+39



PERSONNEL	TITLE	PERSONNEL	TITLE
Ash			
Cronin			
Ripple			
Anderson			

COUNTY Seneca DATE 11/17/72  
 S. R. #18 (S.H. #207) WEATHER overcast  
 SEC. H TEMP. 34°

DESCRIPTION Ties for Control Points - Republic to Sandusky Co. Line JOB NO. \_\_\_\_\_

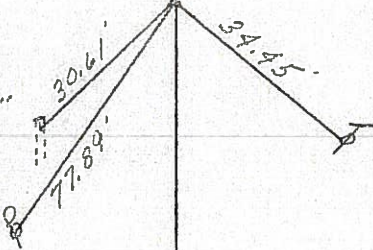
LEFT CENTER LINE RIGHT

82

$\Delta = 00^{\circ} 25' \text{ Rt.}$   
 P.I.  
 42+39  
 Fd. R.R. spike  $1\frac{1}{2}''$   
 below surface. P.K.  
 nail & shiner at top  
 on surface

Adams Twp.  
 Sec. #36

x in C.M.P.

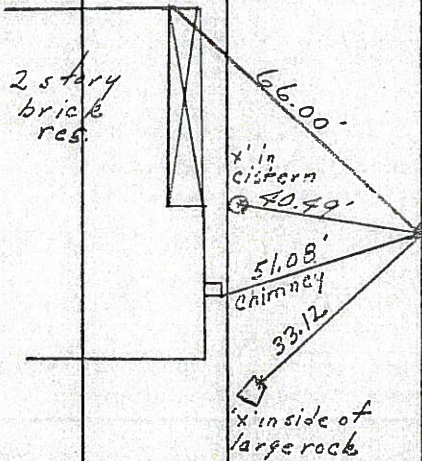


Tied 6/21/71

81

$\Delta = 00^{\circ} 23' \text{ Lt.}$   
 P.I.  
 12+05.53  
 Fd. R.R. spike  $1\frac{1}{2}''$   
 below surface. Set  
 small spike at top

Scipio Twp  
 Sec #2



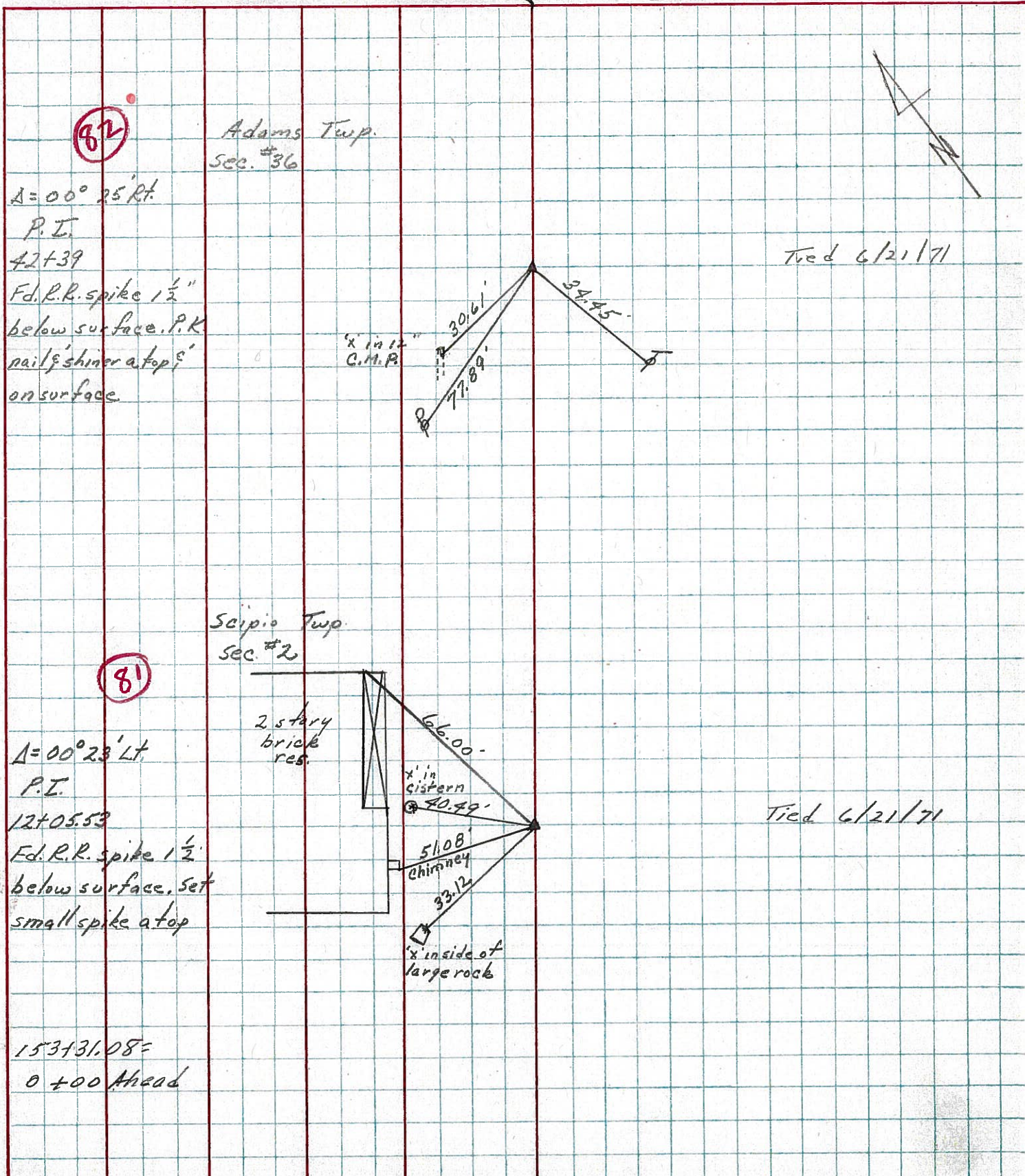
Tied 6/21/71

153+31.08=  
 0+00 Ahead

PERSONNEL	TITLE	PERSONNEL	TITLE
Ash			
Cronin			
Ripple			
Anderson			

COUNTY Seneca DATE 11/17/72  
 S. R. #18 (S.H. #267) WEATHER overcast  
 SEC. H TEMP. 34°

DESCRIPTION Ties for Control Points - Republic to Sandosky Co. Line JOB NO. \_\_\_\_\_



PERSONNEL	TITLE	PERSONNEL	TITLE	COUNTY	DATE	WEATHER	TEMP.
Schneider		Potts		Seneca	11-12-68	Cold - snow	38°
Mosser				S. R. 18			
Barbour				SEC. Republic to Sen. Co. Line			
Redding							

DESCRIPTION: Ties for Control Points

