

O.D.O.T. DISTRICT 2 SURVEY OFFICE (USE ONLY)

PERSONNEL

REFERENCE NO. 83

SHEET 16 OF 28

NOTES RHOADES

DATE 5-25-18

ROUTE SR 18

H.C. O'DONNELL

WEATHER SUNNY

COUNTY SENECA

R.C. HAGEMEYER

TEMP. 78°

TOWNSHIP ADAMS

TRENKA

SECTION 36

DWG BY JAMES

PID 101281

T 3 N R 16 E

TYPE MONUMENT P.K./WASHER

~~ON SURFACE~~ - BELOW 3"

OFFSET Q PAVEMENT ON _____ LT : RT

9.2' TO LT EDGE PAVEMENT

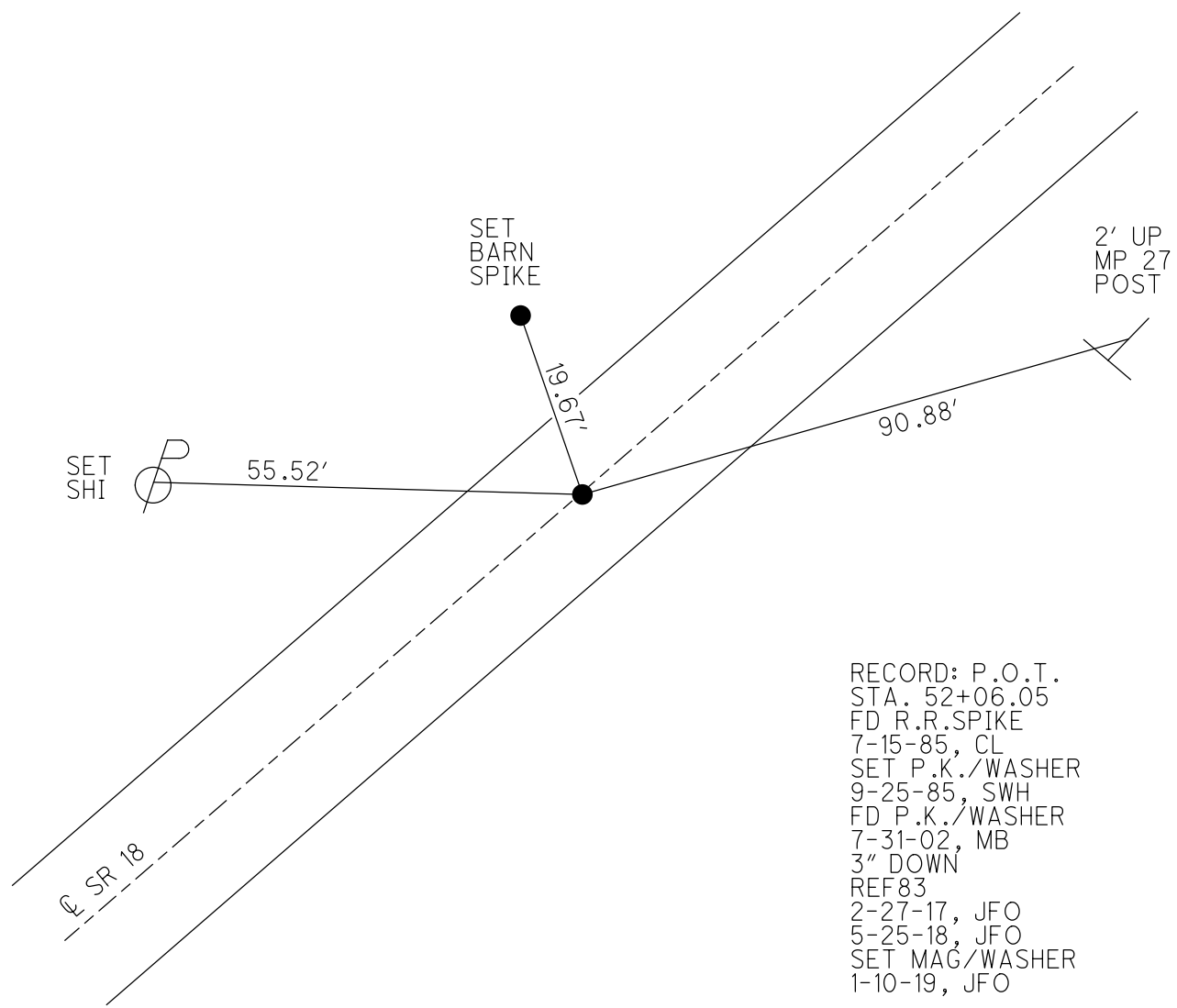
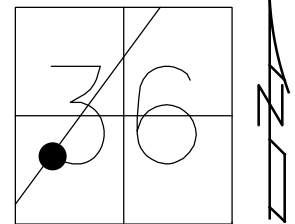
STATION: 1421+49.43

HORZ.DATUM: NAD83 2011

GEOID: NAVD88 2012A

GRID: NORTHING: 549144.542

EASTING: 1838041.865



RECORD: P.O.T.
 STA. 52+06.05
 FD R.R.SPIKE
 7-15-85, CL
 SET P.K./WASHER
 9-25-85, SWH
 FD P.K./WASHER
 7-31-02, MB
 3" DOWN
 REF83
 2-27-17, JFO
 5-25-18, JFO
 SET MAG/WASHER
 1-10-19, JFO

O.D.O.T. DISTRICT 2 SURVEY OFFICE

PERSONNEL _____

REFERENCE NO. 83

SHEET _____ OF _____

NOTES Hoffman

H.C. LOEHRKE

R.C. BARNHISEL

DATE 7-15-85

WEATHER Cloudy

TEMP. 75°

ROUTE 18

COUNTY SENECA

TOWNSHIP ADAMS

SECTION 36

T3 N R 16 E

TYPE MONUMENT P.R. SPIKE

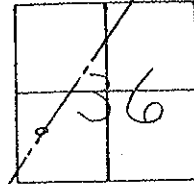
Set P.K./WASHER
9-25-85 SOK

ON SURFACE - ~~BELOW~~ yes

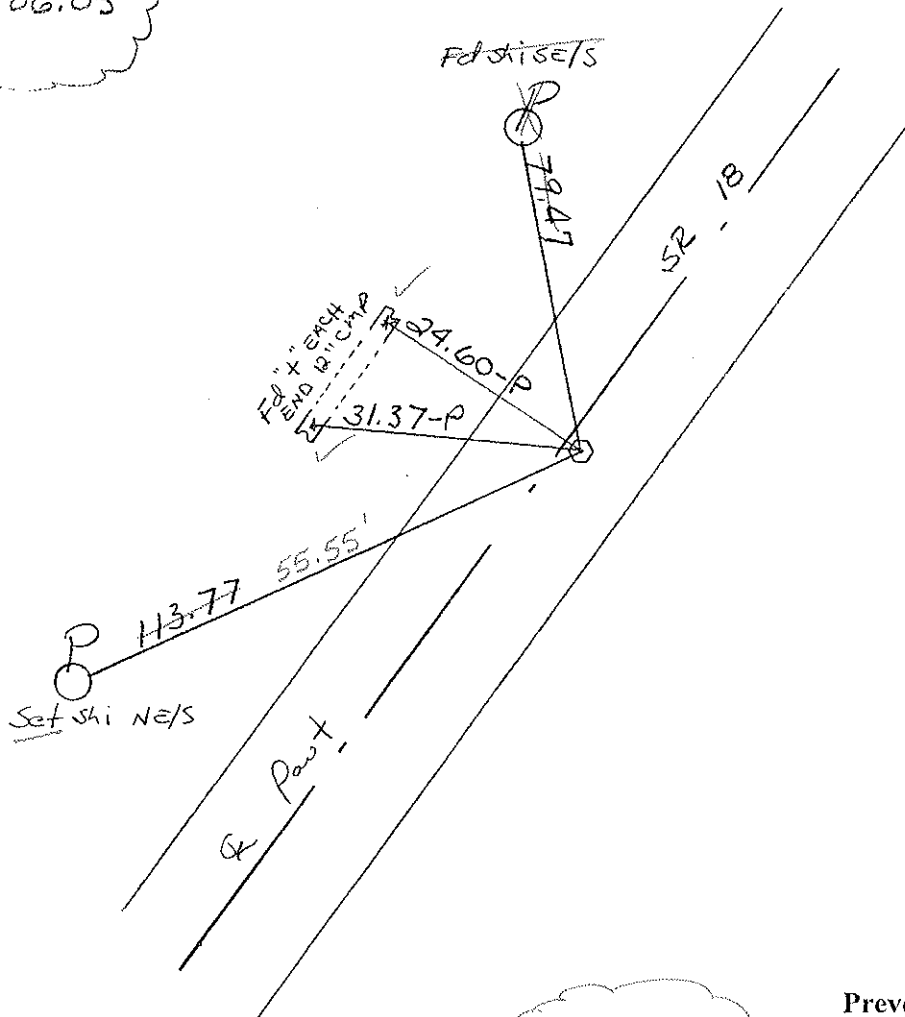
~~LEFT - C PAVT.~~ - RIGHT 0.4 ON E

9.2 TO LT EDGE PAVEMENT

S.L.M. 1425+69



Record!
P.O.T.
52+06.05



Fd PK NAIL
 7-31-02
 MB

Preventive Maintenance
 Chip & Seal 2002
 Existing Point Uncovered
 Date 12-05-02

O.D.O.T. DISTRICT 2 SURVEY OFFICE

PERSONNEL

REFERENCE NO. 83

SHEET OF

NOTES Hoffman

H.C. Loehrke

R.C. BARNHISEL

DATE 7-15-85

WEATHER Cloudy

TEMP. 75°

ROUTE 18

COUNTY SENECA

TOWNSHIP ADAMS

SECTION 36

T3 N R 16 E

TYPE MONUMENT P.R. SPIKE

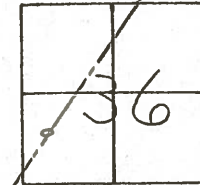
ON SURFACE - BELOW yes

~~LEFT -~~ PAV'T. - RIGHT 0.4

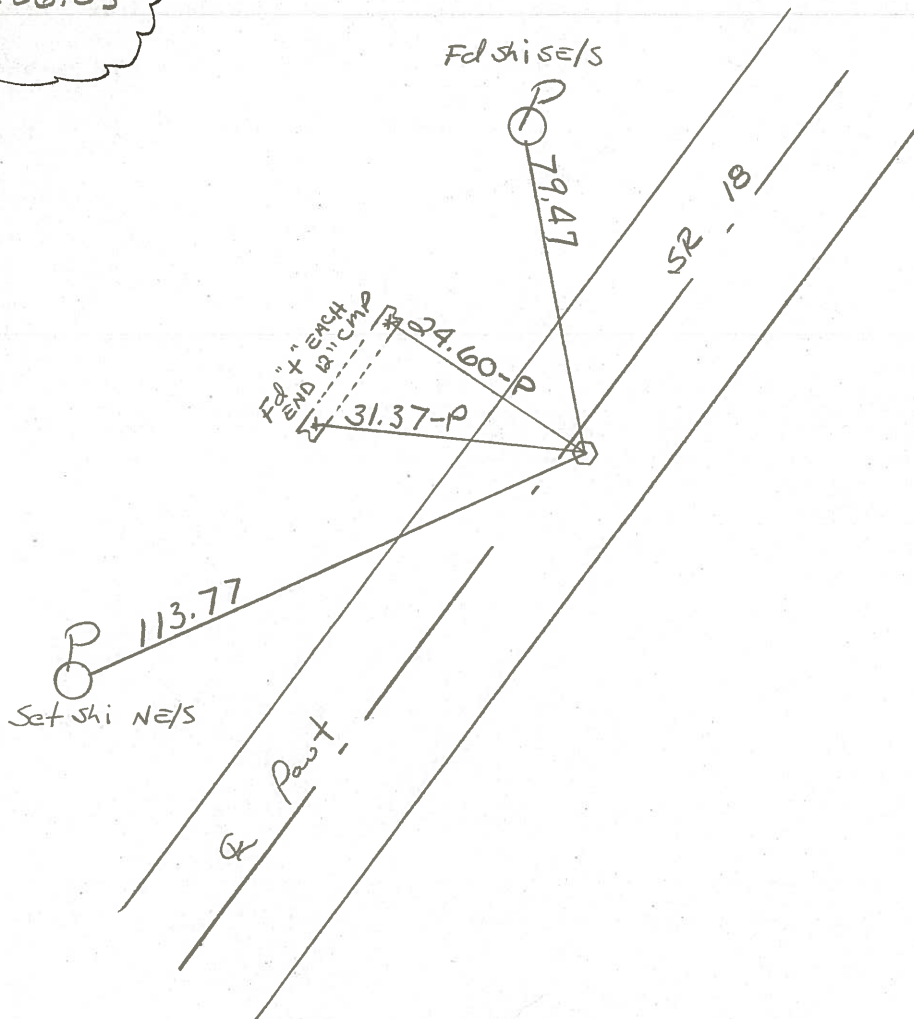
9.2 TO LT. EDGE PAVEMENT

S.L.M. 1425+69

Set P.K./WASHER
9-25-85 SKH



Record!
P.O.T.
52+06.05



PERSONNEL TITLE PERSONNEL TITLE

Ash
 Cronin
 Ripple
 Anderson

COUNTY Seneca

DATE 11/20/72

S. R. #18 (S.H. 267)

WEATHER cloudy

SEC. 4

TEMP. 35°

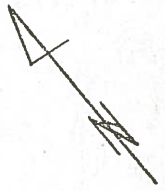
DESCRIPTION Ties for Control Points - Republic to Sandusky Co. Line

JOB NO.

LEFT

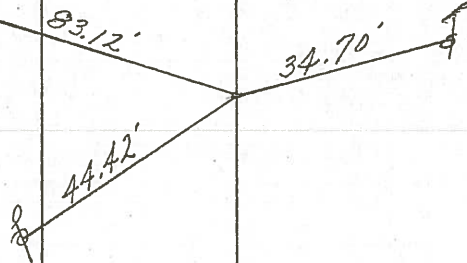
CENTER LINE

RIGHT



Adams Twp.
 Sec. 56

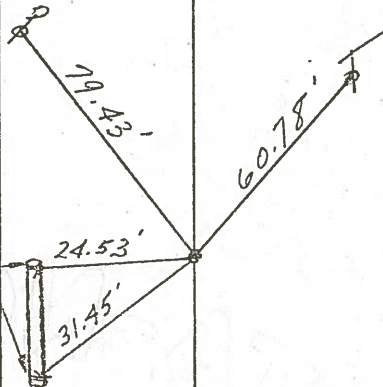
10" cedar
 nail only
 1.9' up from
 ground



Tied 6/22/71

Adams Twp.
 Sec. 36

cut in end
 of 12" c.m.p.



Fd. tied 11/20/72
 Fd. from 1940 Plans

84

$\Delta = 00^{\circ} 19' \text{ Rt.}$
 P.I.
 72+05.52
 Fd. R.R. spike 1 1/2"
 below surface. P.K.
 nail & shiner atop &
 on surface

83

P.O.T
 52+06.05
 Fd. iron pin 6"
 below surface
 Set R.R. spike
 atop & to surface

PERSONNEL	TITLE	PERSONNEL	TITLE	COUNTY	DATE
Ash				Seneeca	11/20/72
Cronin				S. R. #18 (S.H. 267)	WEATHER cloudy
Ripple				SEC. 4'	TEMP. 35°
Anderson					

DESCRIPTION Ties for Control Points - Republic to Sandusky Co. Line JOB NO. _____

