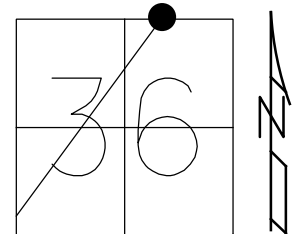


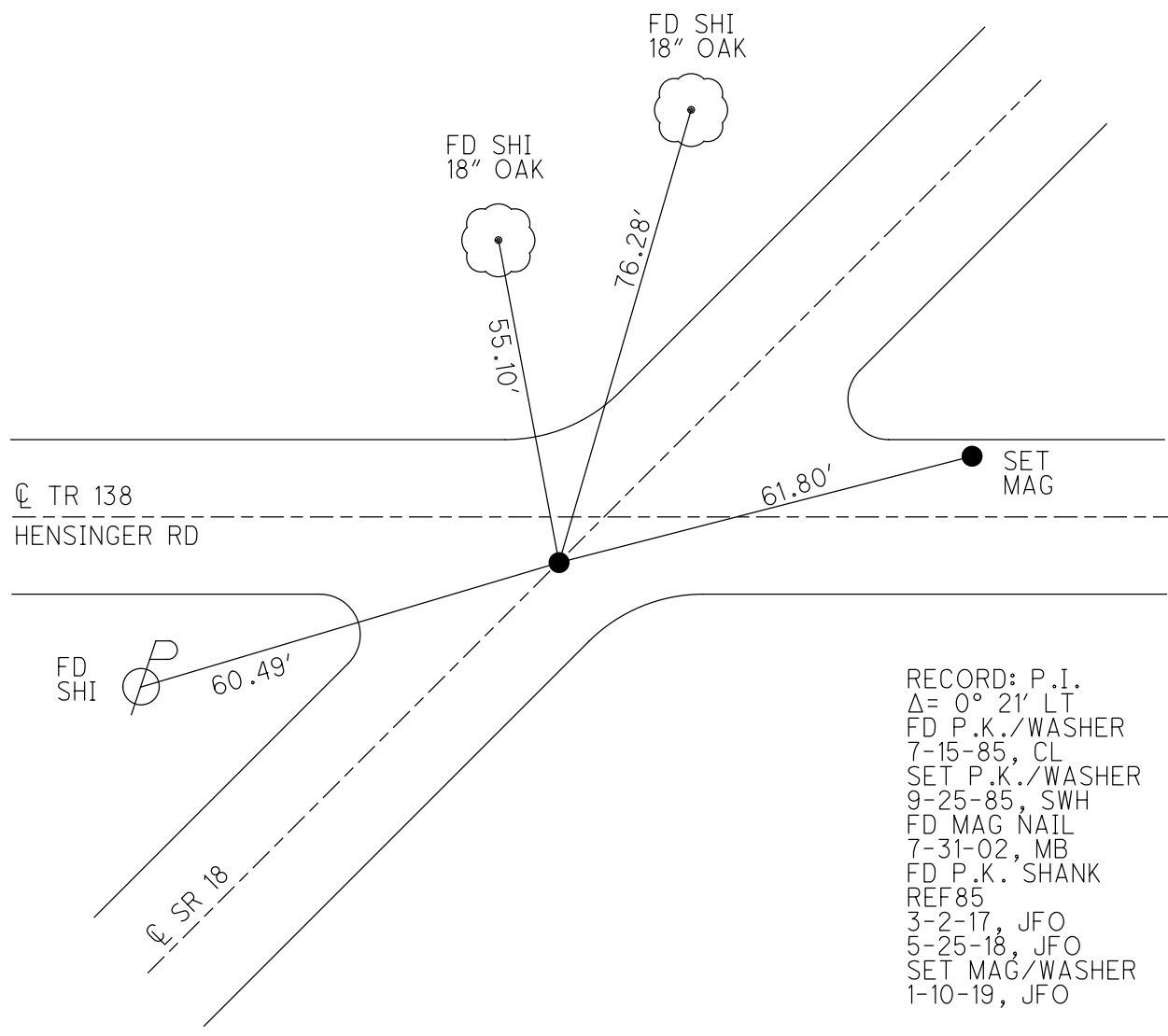
O.D.O.T. DISTRICT 2 SURVEY OFFICE (USE ONLY)

PERSONNEL \_\_\_\_\_ REFERENCE NO. 85 SHEET 18 OF 28  
 NOTES RHOADES DATE 5-25-18 ROUTE SR 18  
 H.C. O'DONNELL WEATHER SUNNY COUNTY SENECA  
 R.C. HAGEMeyer TEMP. 78° TOWNSHIP ADAMS  
           TRENKA SECTION 36  
 DWG BY JAMES PID 101281 T 3 N R 16 E

TYPE MONUMENT P.K. SHANK  
~~ON SURFACE~~ - BELOW 0.1'  
 OFFSET  $\varnothing$  PAVEMENT ON \_\_\_\_\_ LT : RT  
 \_\_\_\_\_ TO \_\_\_\_\_ EDGE PAVEMENT  
 STATION: 1466+59.12



HORZ.DATUM: NAD83 2011 GEOID: NAVD88 2012A  
 GRID: NORTHING: 552853.096 EASTING: 1840607.763



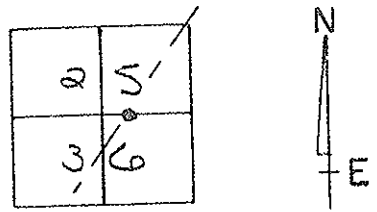
RECORD: P.I.  
 $\Delta = 0^\circ 21' LT$   
 FD P.K./WASHER  
 7-15-85, CL  
 SET P.K./WASHER  
 9-25-85, SWH  
 FD MAG NAIL  
 7-31-02, MB  
 FD P.K. SHANK  
 REF85  
 3-2-17, JFO  
 5-25-18, JFO  
 SET MAG/WASHER  
 1-10-19, JFO

# O.D.O.T. DISTRICT 2 SURVEY OFFICE

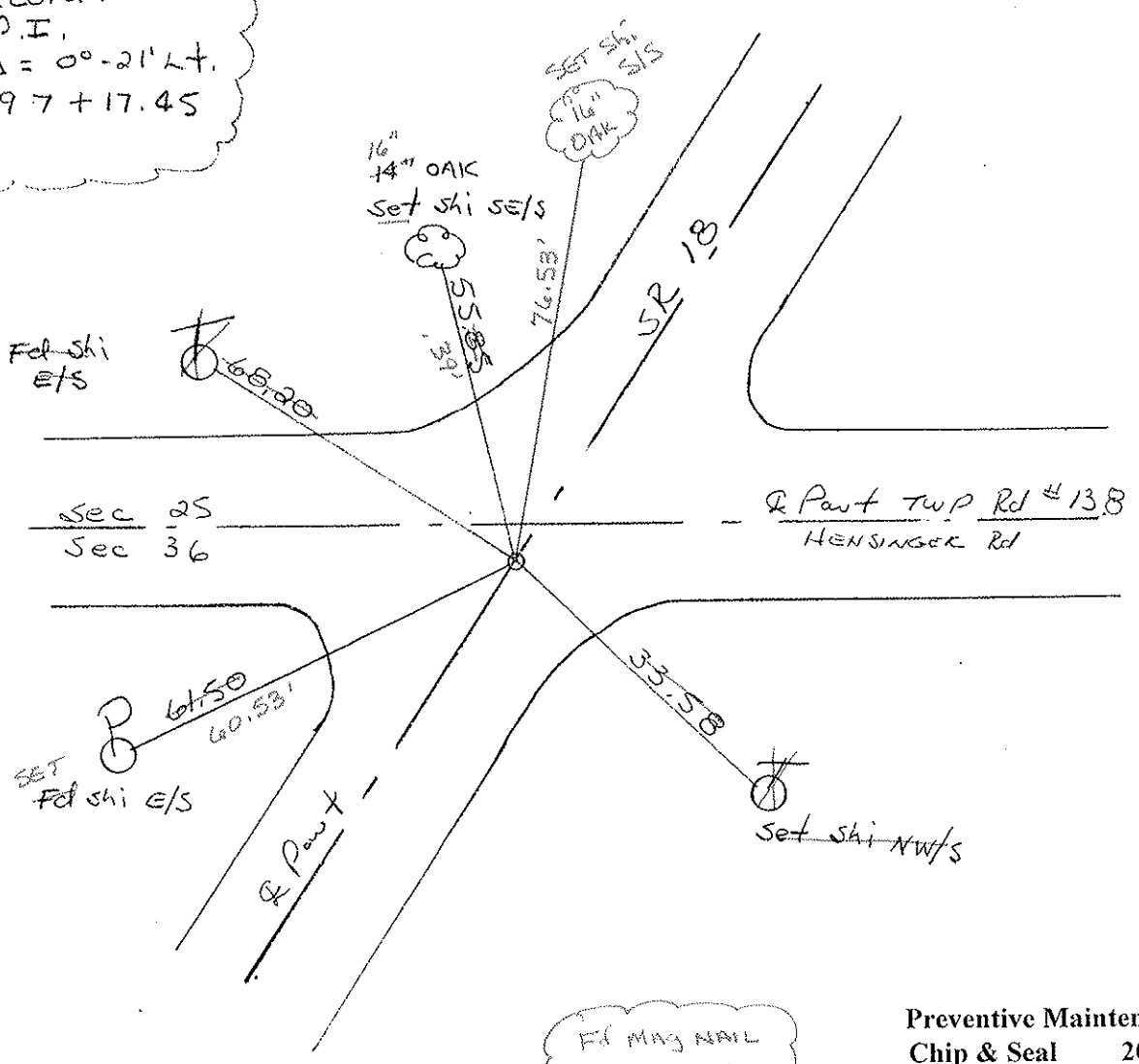
PERSONNEL \_\_\_\_\_ REFERENCE NO. 85 SHEET \_\_\_\_\_ OF \_\_\_\_\_

NOTES Hoffman DATE 7-15-85 ROUTE 18  
 H.C. LOEHKE WEATHER Cloudy COUNTY SENECA  
 R.C. BAENHISEL TEMP. 75° TOWNSHIP ADAMS  
 SECTION 25  
 T3 N R 16 E

TYPE MONUMENT P.K. Set P.K. / washer  
9-25-85 SWN  
 ON SURFACE - ~~BELOW~~ yes  
~~LEFT - C. PAV'T. - RIGHT~~ yes  
TO EDGE PAVEMENT 2.7' S. of the Pav't  
Rd # 138 EAST  
 S.L.M. 1470 + 83



Record:  
 P.I.  
 $\Delta = 00-21' Lt.$   
 97 + 17.45



Fd MAG NAIL  
 7-31-02  
 MB

Preventive Maintenance  
 Chip & Seal 2002  
 Existing Point Uncovered  
 Date 12-06-02

PERSONNEL	TITLE	PERSONNEL	TITLE	COUNTY	DATE
Ash				Seneca	11/20/72
Cranin				S. R. # 18 (S.H. #267)	WEATHER cloudy
Ripple				SEC. 'H'	TEMP. 37°
Anderson					

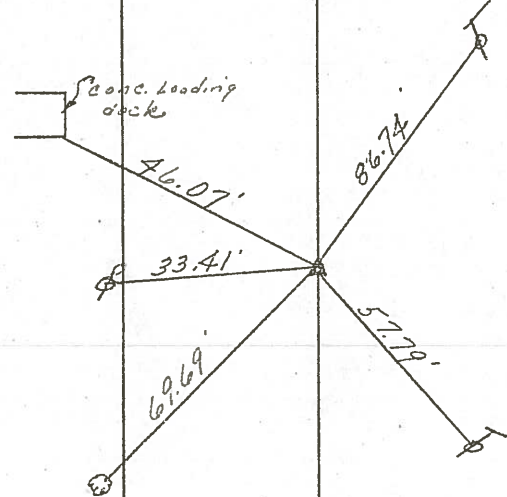
DESCRIPTION Ties for Control Points - Republic to Sand. Co. line JOB NO. \_\_\_\_\_

LEFT CENTER LINE RIGHT

86

112 + 04.10  
 $\Delta = 00^\circ 18' \text{ Rt.}$   
 P.I.  
 Fd. iron pin 3"  
 below surface. Set  
 small spike atop &  
 on surface

Adams Twp  
 Sec. 25



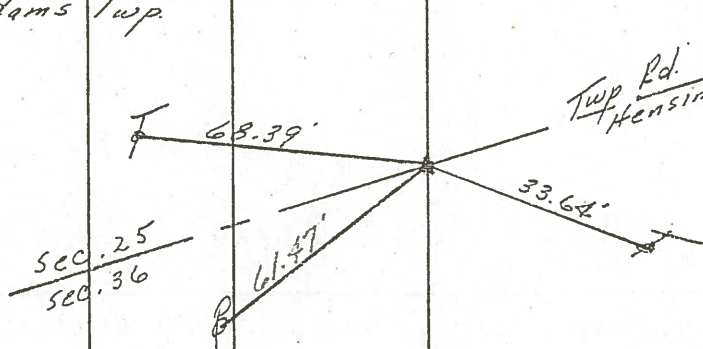
Tied 6/22/71

85

30

$\Delta = 00^\circ 21' \text{ Lt.}$   
 P.I.  
 97 + 17.45  
 Fd. P.R. spike 1 1/2"  
 below surface P.R.  
 nail & shiner atop &  
 on surface

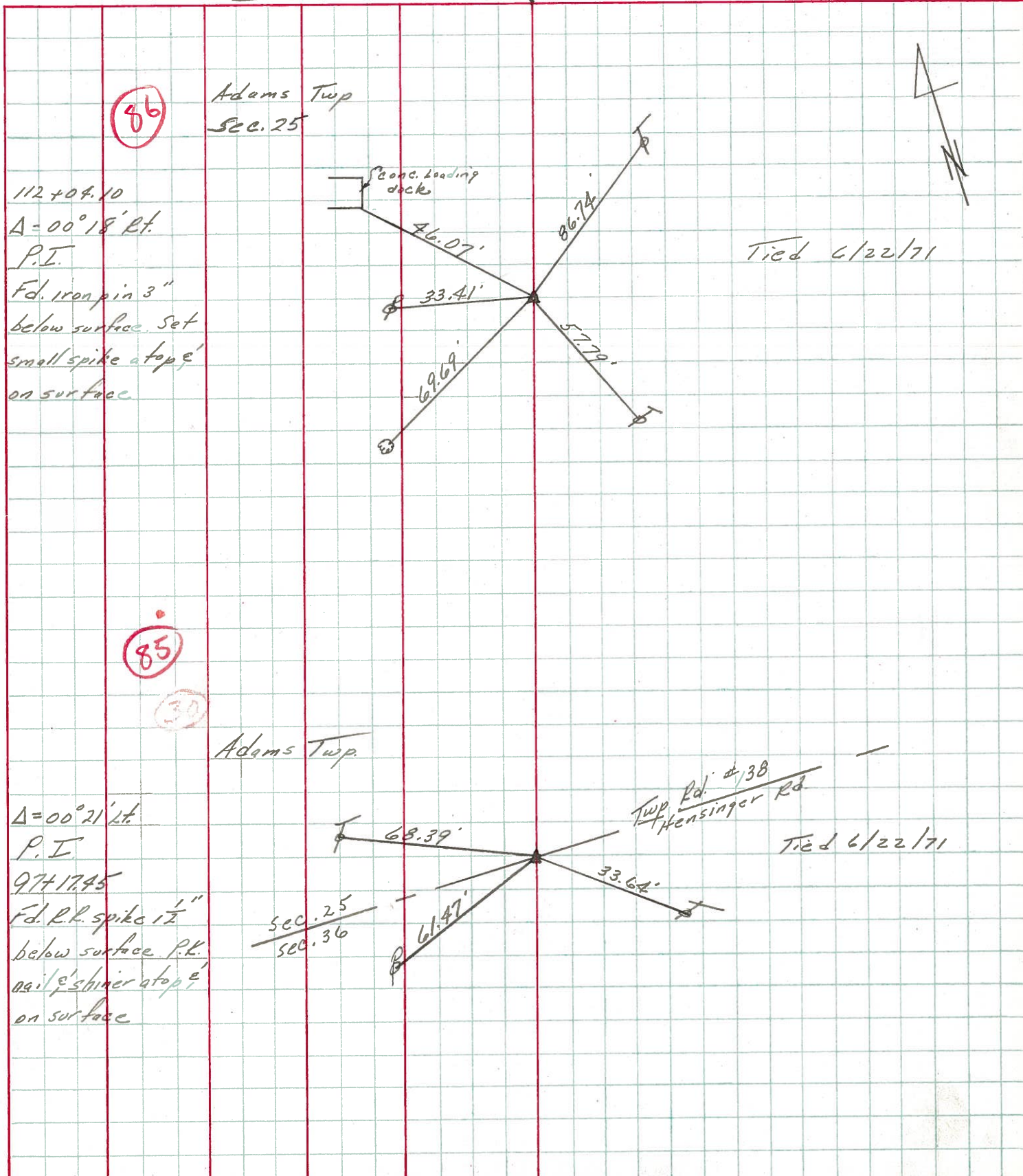
Adams Twp



Tied 6/22/71

PERSONNEL	TITLE	PERSONNEL	TITLE	COUNTY	DATE
Ash				Seneca	11/20/72
Cronin				S. R. # 18 (S.H. # 267)	WEATHER cloudy
Ripple				SEC. 4'	TEMP. 37°
Anderson					

DESCRIPTION Ties for Control Points - Republic to Sand. Co. Line JOB NO. \_\_\_\_\_



PERSONNEL	TITLE	PERSONNEL	TITLE	COUNTY	DATE
Schnieder		Potts		Seneca	11-12-68
Mosser				S. R. 18	WEATHER Cold-snow
Barbour				SEC. Republic to Sen. Co. Line	TEMP. 38°
Redding					

DESCRIPTION Ties for Control Points JOB NO. \_\_\_\_\_

