

O.D.O.T. DISTRICT 2 SURVEY OFFICE (USE ONLY)

PERSONNEL \_\_\_\_\_ REFERENCE NO. 86 SHEET 19 OF 28  
 NOTES RHOADES DATE 5-25-18 ROUTE SR 18  
 H.C. O'DONNELL WEATHER SUNNY COUNTY SENECA  
 R.C. HAGEMeyer TEMP. 78° TOWNSHIP ADAMS  
           TRENKA SECTION 25  
 DWG BY JAMES PID 101281 T 3 N R 16 E

TYPE MONUMENT P.K. SHANK

~~ON SURFACE~~ - BELOW 2.5"

OFFSET  $\varnothing$  PAVEMENT 0.6' LT : ~~RT~~

9.2' TO LT EDGE PAVEMENT

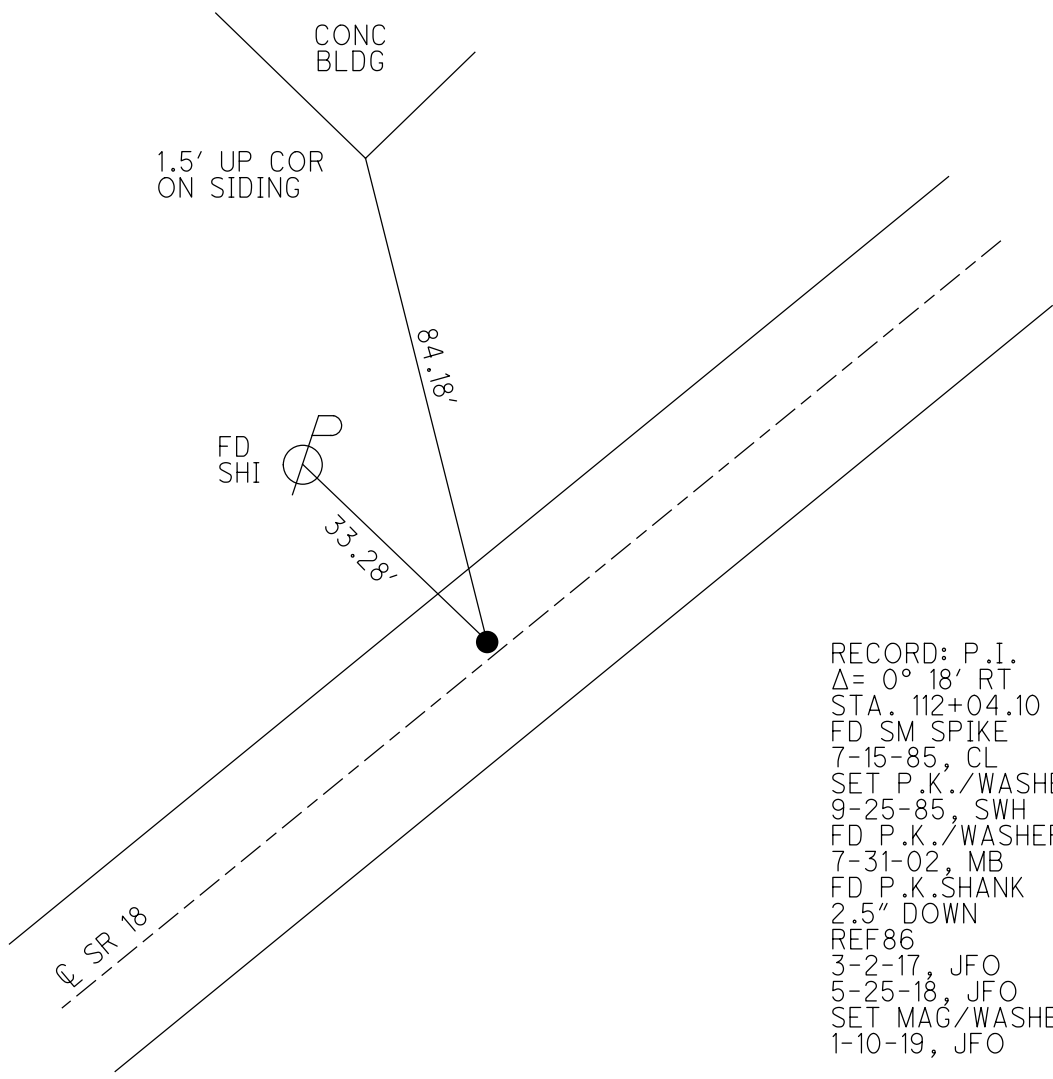
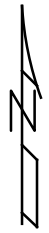
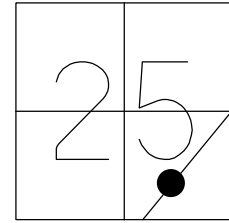
STATION: 1481+47.75

HORIZ.DATUM: NAD83 2011

GEOID: NAVD88 2012A

GRID: NORTHING: 554080.094

EASTING: 1841450.666



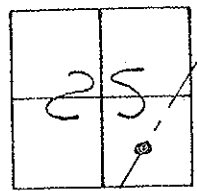
RECORD: P.I.  
 $\Delta = 0^\circ 18' RT$   
 STA. 112+04.10  
 FD SM SPIKE  
 7-15-85, CL  
 SET P.K./WASHER  
 9-25-85, SWH  
 FD P.K./WASHER  
 7-31-02, MB  
 FD P.K.SHANK  
 2.5" DOWN  
 REF86  
 3-2-17, JFO  
 5-25-18, JFO  
 SET MAG/WASHER  
 1-10-19, JFO

# O.D.O.T. DISTRICT 2 SURVEY OFFICE

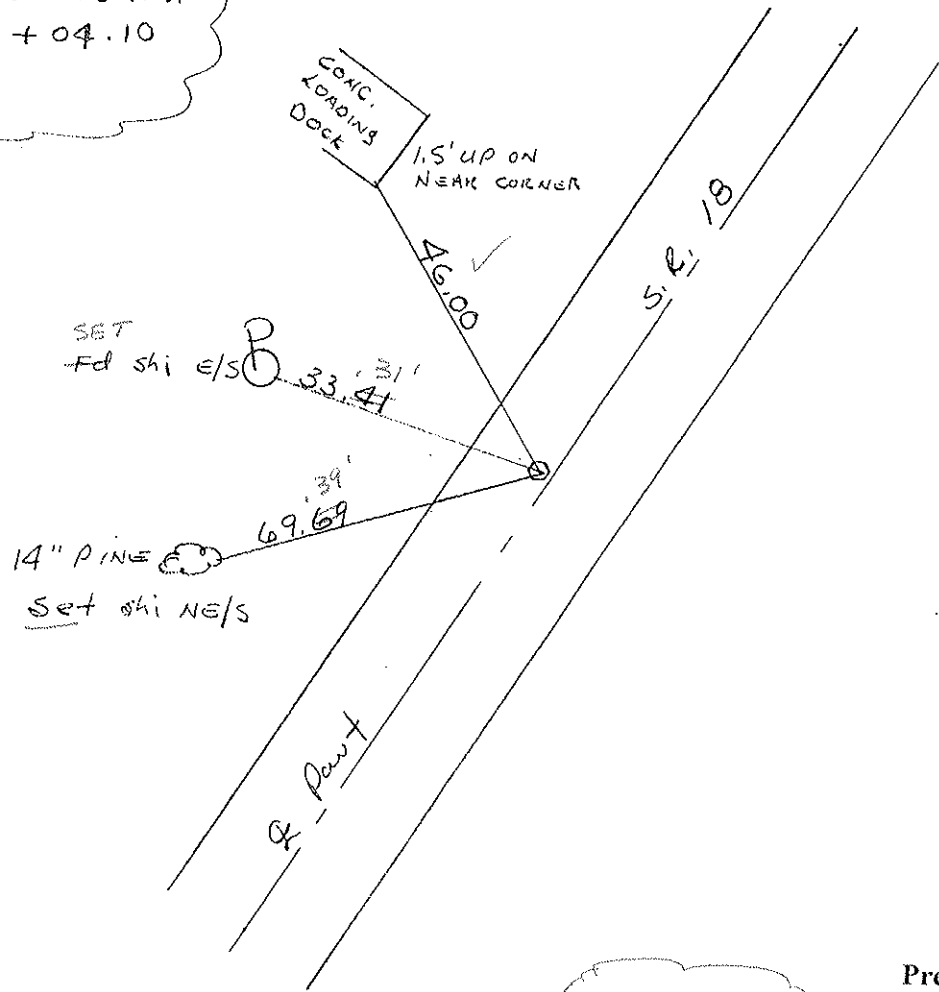
PERSONNEL \_\_\_\_\_ REFERENCE NO. 86 SHEET \_\_\_\_\_ OF \_\_\_\_\_

NOTES Hoffman DATE 7-15-85 ROUTE 18  
 H.C. LOEHLKE WEATHER Cloudy COUNTY SENCA  
 R.C. BARNHISEL TEMP. 75° TOWNSHIP ADAMS  
 SECTION 25  
T3 NR 16 E

TYPE MONUMENT SMALL SPIKE Set PK/WASHER  
 ON SURFACE - ~~BELOW~~ yes 9-25-85 SWK  
 LEFT - ~~C~~ PAWT. - RIGHT 0.6  
9.2 TO LT. EDGE PAVEMENT  
 S.L.M. 1485 + 72



RECORD!  
 P.I.  
 $\Delta = 0^\circ - 18' RT.$   
 112 + 04.10



Set PK/WASHER  
 7-31-02  
 MB

Preventive Maintenance  
 Chip & Seal 2002  
 Existing Point Uncovered  
 Date 12-06-02

# O.D.O.T. DISTRICT 2 SURVEY OFFICE

PERSONNEL \_\_\_\_\_

REFERENCE NO. 86

SHEET \_\_\_\_\_ OF \_\_\_\_\_

NOTES Hoffman

H.C. LOEHRKE

DATE 7-15-85

ROUTE 18

R.C. BARNHISEL

WEATHER Cloudy

COUNTY SENCA

TEMP. 75°

TOWNSHIP ADAMS

SECTION 25

T3 N R 16 E

TYPE MONUMENT SMALL SPIKE

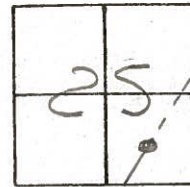
Set PK/WASHER  
9-25-85 SWH

ON SURFACE - BELOW yes

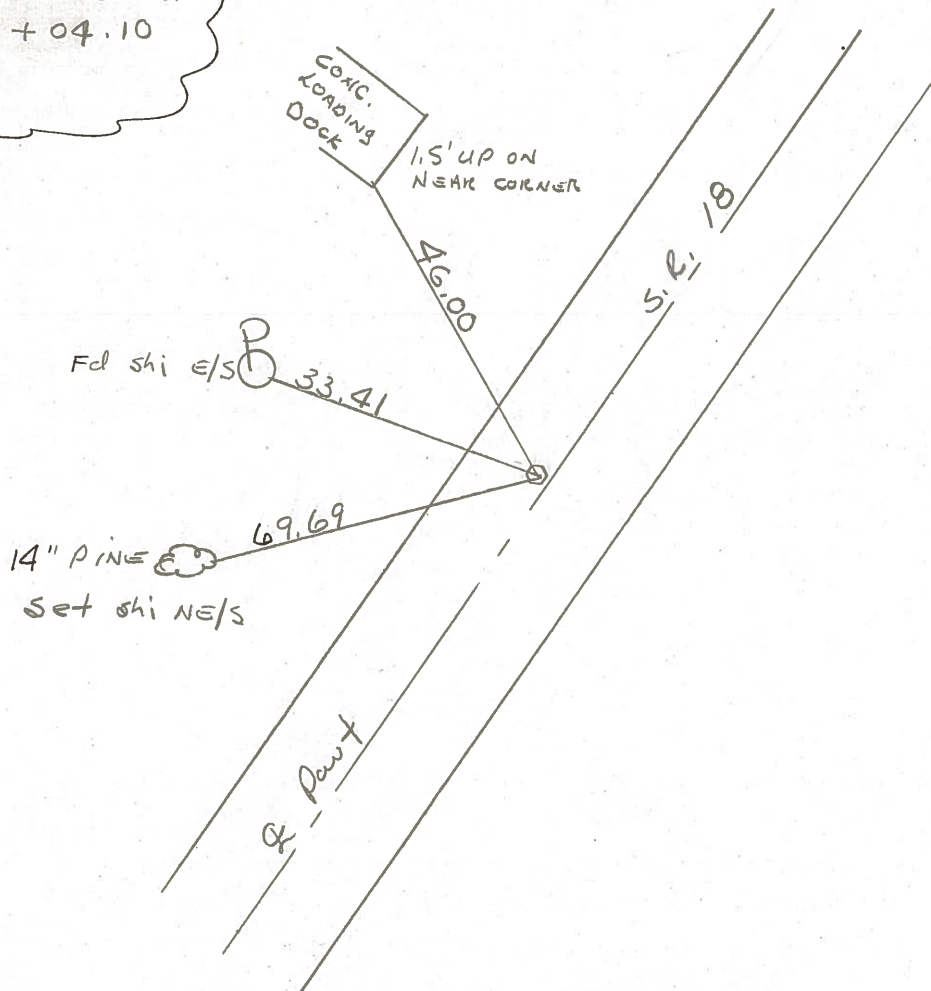
LEFT - PAV'T. - RIGHT 0.6

9.2 TO LT. EDGE PAVEMENT

S.L.M. 1485 + 72



RECORD!  
P.I.  
 $\Delta = 0^\circ - 18' RT.$   
112 + 04.10



PERSONNEL	TITLE	PERSONNEL	TITLE
Ash			
Cronin			
Ripple			
Anderson			

COUNTY Seneca DATE 11/20/72  
 S. R. # 18 (S.H. #267) WEATHER cloudy  
 SEC. H' TEMP. 37°

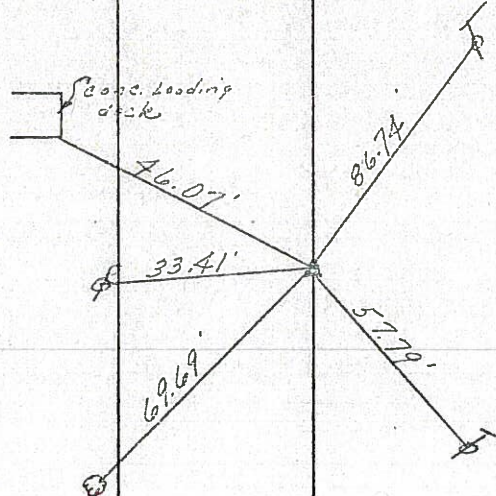
DESCRIPTION Ties for Control Points - Republic to Sand. Co. line JOB NO. \_\_\_\_\_

LEFT CENTER LINE RIGHT

86

112+04.10  
 $\Delta = 00^\circ 18' \text{ Lt.}$   
 P.I.  
 Fd. iron pin 3"  
 below surface. Set  
 small spike atop  
 on surface

Adams Twp  
 Sec. 25



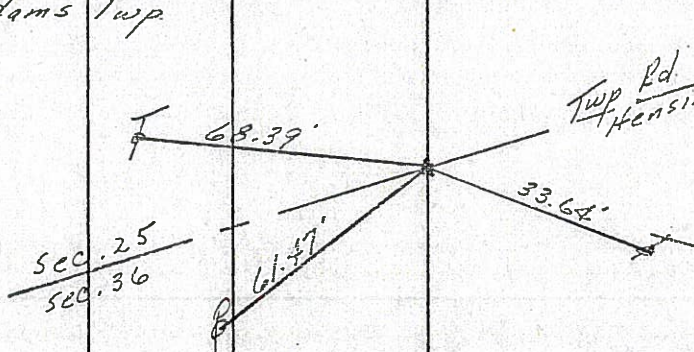
Tied 6/22/71

85

97+17.45  
 $\Delta = 00^\circ 21' \text{ Lt.}$   
 P.I.  
 Fd. P.L. spike 1 1/2"  
 below surface P.L.  
 nail & shiner atop  
 on surface

30

Adams Twp

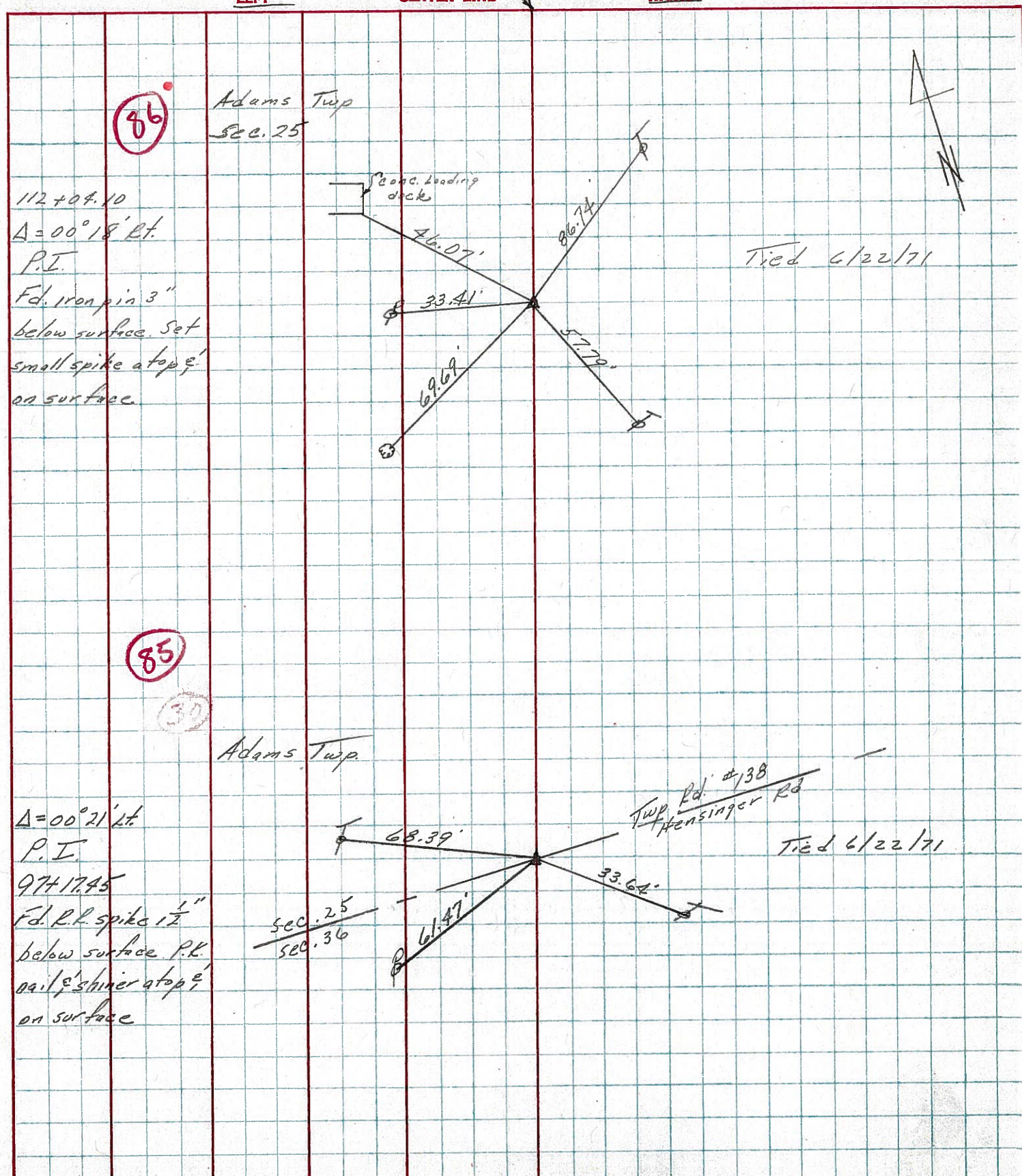


Twp Rd. #138  
 Hensinger Rd.

Tied 6/22/71

PERSONNEL	TITLE	PERSONNEL	TITLE	COUNTY	DATE
Ash				Seneca	11/20/72
Cranin				S. R. # 18 (S.H. #267)	WEATHER cloudy
Ripple				SEC. H'	TEMP. 37°
Anderson					

DESCRIPTION Ties for Control Points - Republic to Sand. Co. line JOB NO. \_\_\_\_\_



PERSONNEL	TITLE	PERSONNEL	TITLE	COUNTY	Seneca	DATE	11-13-68
Schneider		Potts		S. R.	18	WEATHER	Cold
Mosser				SEC	Republic to Sen. Co. Line	TEMP.	25°
Barbour				DESCRIPTION	Ties for Control Points		JOB NO.
Redding							

LEFT CENTER LINE RIGHT

89 154+44.88  
P.K. Nail  
 $\Delta = 0^\circ 27' Lt.$

8178

88 140+69.66  
P.K. Nail  
 $\Delta = 11^\circ 40' Rt.$

8177

87 127+04.06  
P.K. Nail  
 $\Delta = 0^\circ 30' Rt.$

8176

86 112+04.1  
P.K. Nail  
 $\Delta = 0^\circ 18' Rt.$

8175

