

O.D.O.T. DISTRICT 2 SURVEY OFFICE (USE ONLY)

PERSONNEL \_\_\_\_\_ REFERENCE NO. 87 SHEET 20 OF 28  
 NOTES RHOADES DATE 5-25-18 ROUTE SR 18  
 H.C. O'DONNELL WEATHER SUNNY COUNTY SENECA  
 R.C. HAGEMEYER TEMP. 78° TOWNSHIP ADAMS  
TRENKA SECTION 25  
 DWG BY JAMES PID 101281 T 3 N R 16 E

TYPE MONUMENT P.K./WASHER

~~ON SURFACE~~ - BELOW 3"

OFFSET Q PAVEMENT 1.0' LT : ~~RT~~  
9.2' TO LT EDGE PAVEMENT

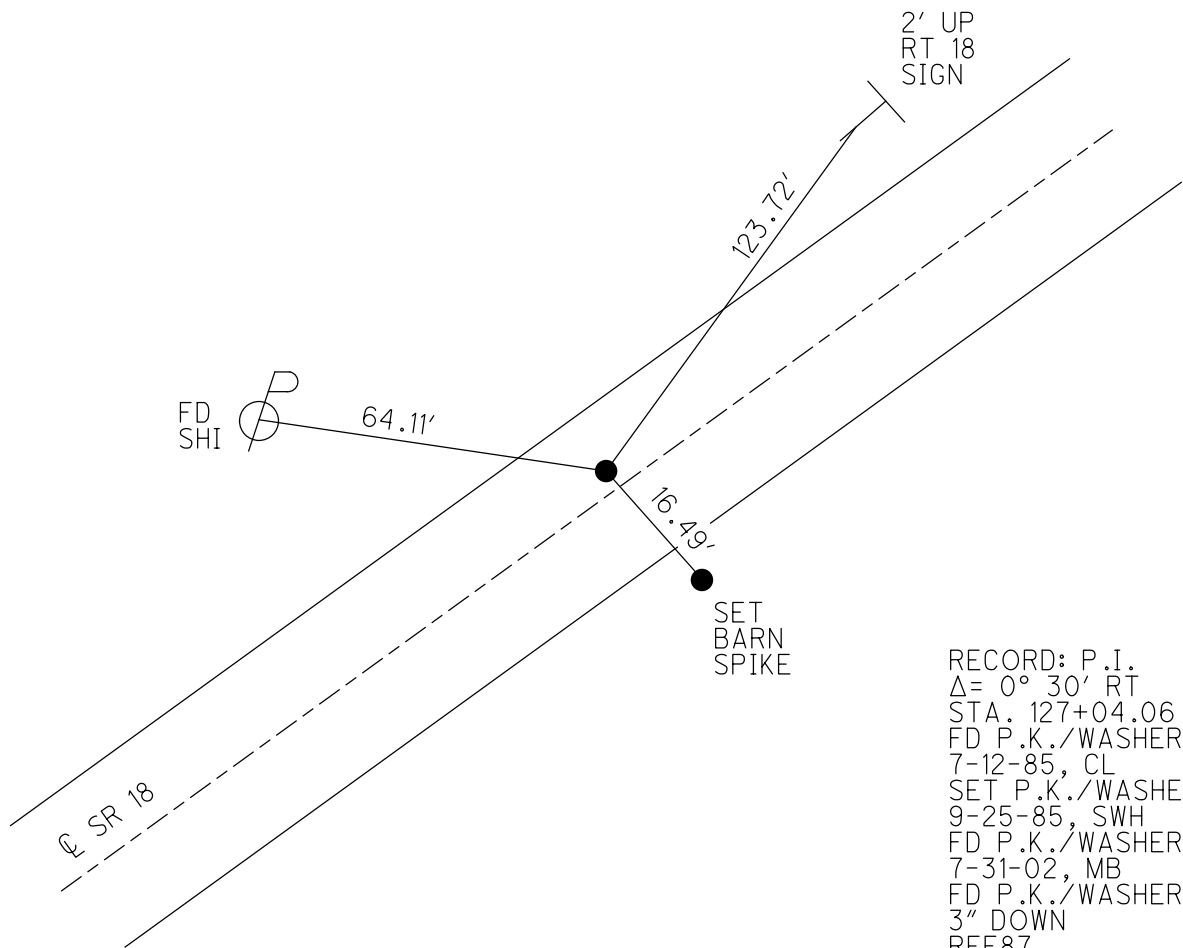
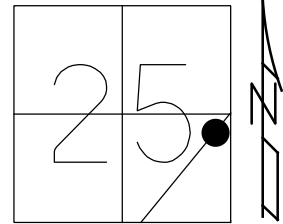
STATION: 1496+47.05

HORZ.DATUM: NAD83 2011

GEOID: NAVD88 2012A

GRID: NORTHING: 555311.606

EASTING: 1842305.809



RECORD: P.I.  
 $\Delta = 0^{\circ} 30' RT$   
 STA. 127+04.06  
 FD P.K./WASHER  
 7-12-85, CL  
 SET P.K./WASHER  
 9-25-85, SWH  
 FD P.K./WASHER  
 7-31-02, MB  
 FD P.K./WASHER  
 3" DOWN  
 REF87  
 3-2-17, JFO  
 5-25-18, JFO  
 SET MAG/WASHER  
 1-14-19, JFO

# O.D.O.T. DISTRICT 2 SURVEY OFFICE

PERSONNEL \_\_\_\_\_ REFERENCE NO. 87 SHEET \_\_\_\_\_ OF \_\_\_\_\_

NOTES Hoffman DATE 7-12-85 ROUTE 18

H.C. LOEHRKE WEATHER CLEAR COUNTY Seneca

R.C. BARNHISEL TEMP. 80° TOWNSHIP ADAMS

SECTION 25

T3 NR 16 E

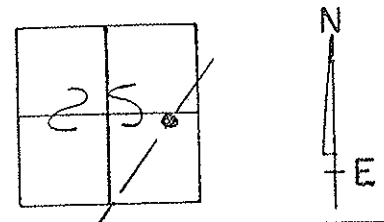
TYPE MONUMENT P.K. Set PK/WASHER 9.25-85 SWK

ON SURFACE - ~~BELOW~~ yes

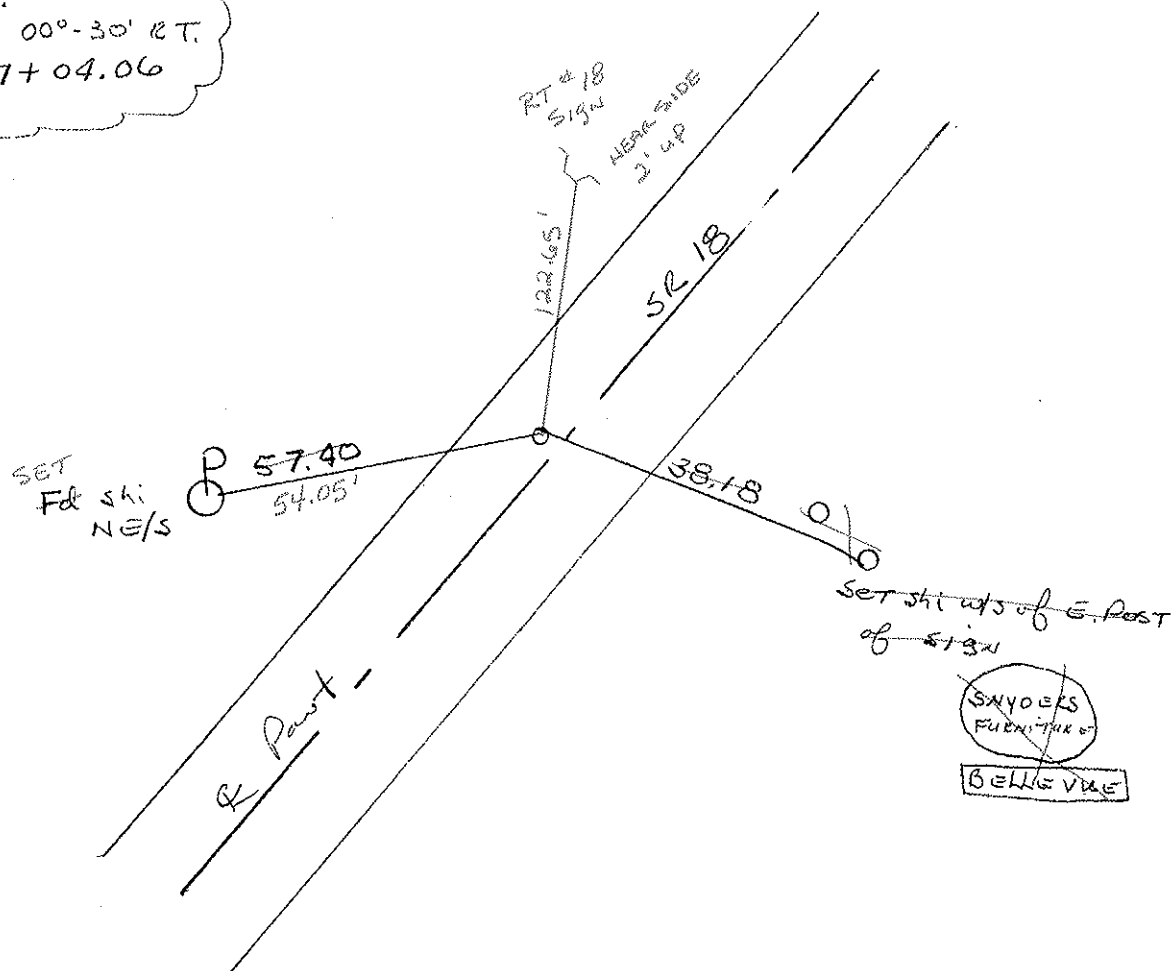
LEFT - ~~PAV'T.~~ - RIGHT 1.0

9.2 TO LT EDGE PAVEMENT

S.L.M. 1500 + 75



RECORD:  
P.I.  
 $\Delta = 00^\circ - 30' \text{ RT.}$   
127 + 04.06



F& SKI/WASHER  
7-31-02  
MTB

Preventive Maintenance  
Chip & Seal 2002  
Existing Point Uncovered  
Date 12-06-02

# O.D.O.T. DISTRICT 2 SURVEY OFFICE

PERSONNEL

REFERENCE NO. 87

SHEET      OF     

NOTES Hoffman

H.C. LOEHKE

R.C. BARNHISEL

DATE 7-12-85

WEATHER CLEAR

TEMP. 80°

ROUTE 18

COUNTY Seneca

TOWNSHIP ADAMS

SECTION 25

T3 NR 16 E

TYPE MONUMENT P.K.

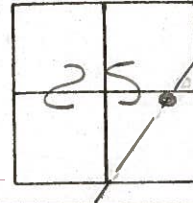
Set P.K./WASHER  
9.25-85 SWH

ON SURFACE - BELOW yes

LEFT - PAV'T. - RIGHT 1.0

9.2 TO LT EDGE PAVEMENT

S.L.M. 1500 + 75

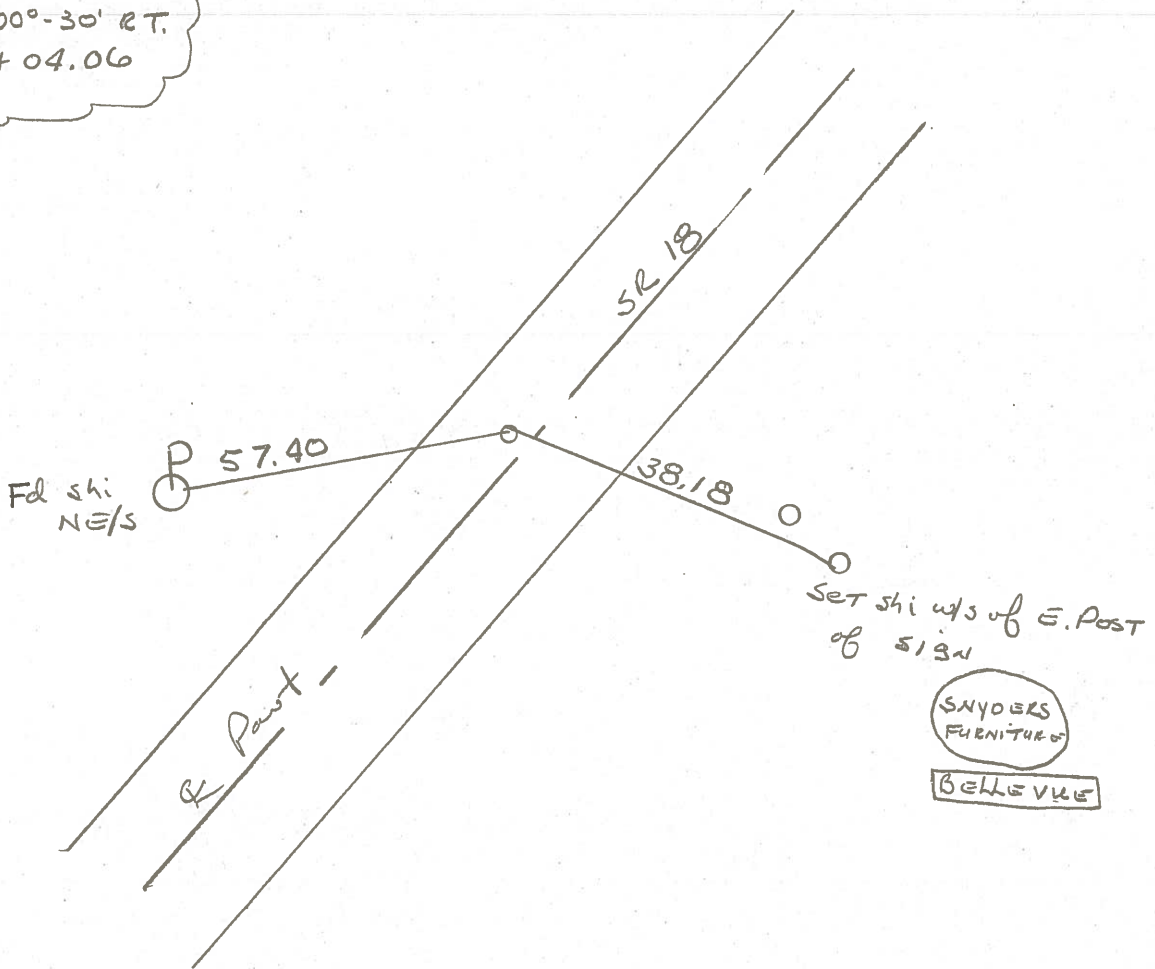


RECORDS:

P.I.

$\Delta = 00^{\circ} - 30' RT.$

127 + 04.06



PERSONNEL TITLE PERSONNEL TITLE

COUNTY Seneca DATE 11/20/72

Ash  
Cronin  
Ripple  
Anderson

S. R. #18 (S.H. 267) WEATHER cloudy  
SEC. H TEMP. 37°

DESCRIPTION Ties for Control Points - Republic to Sandusky Co. Line JOB NO.

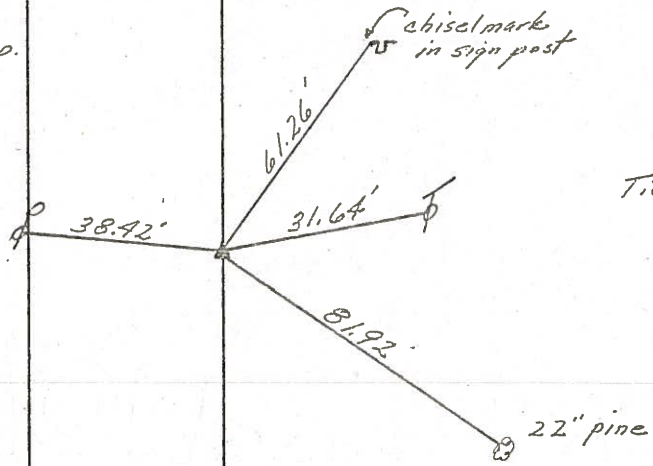
LEFT CENTER LINE RIGHT

Thompson Twp.  
Sec. 30

Adams Twp.  
Sec. 25

88

$\Delta = 11^\circ 40' \text{ Rt.}$   
P.I  
140 + 69.66  
Fd. R.R. spike 4"  
below surface. set  
small spike atop  
& on surface

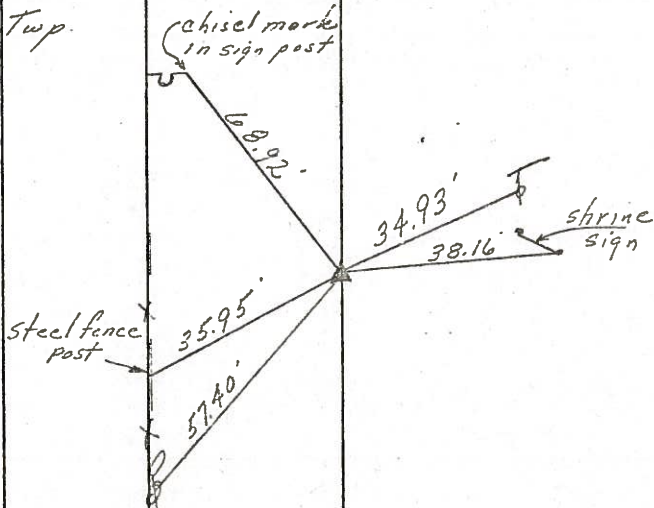


Tied 6/22/71



87

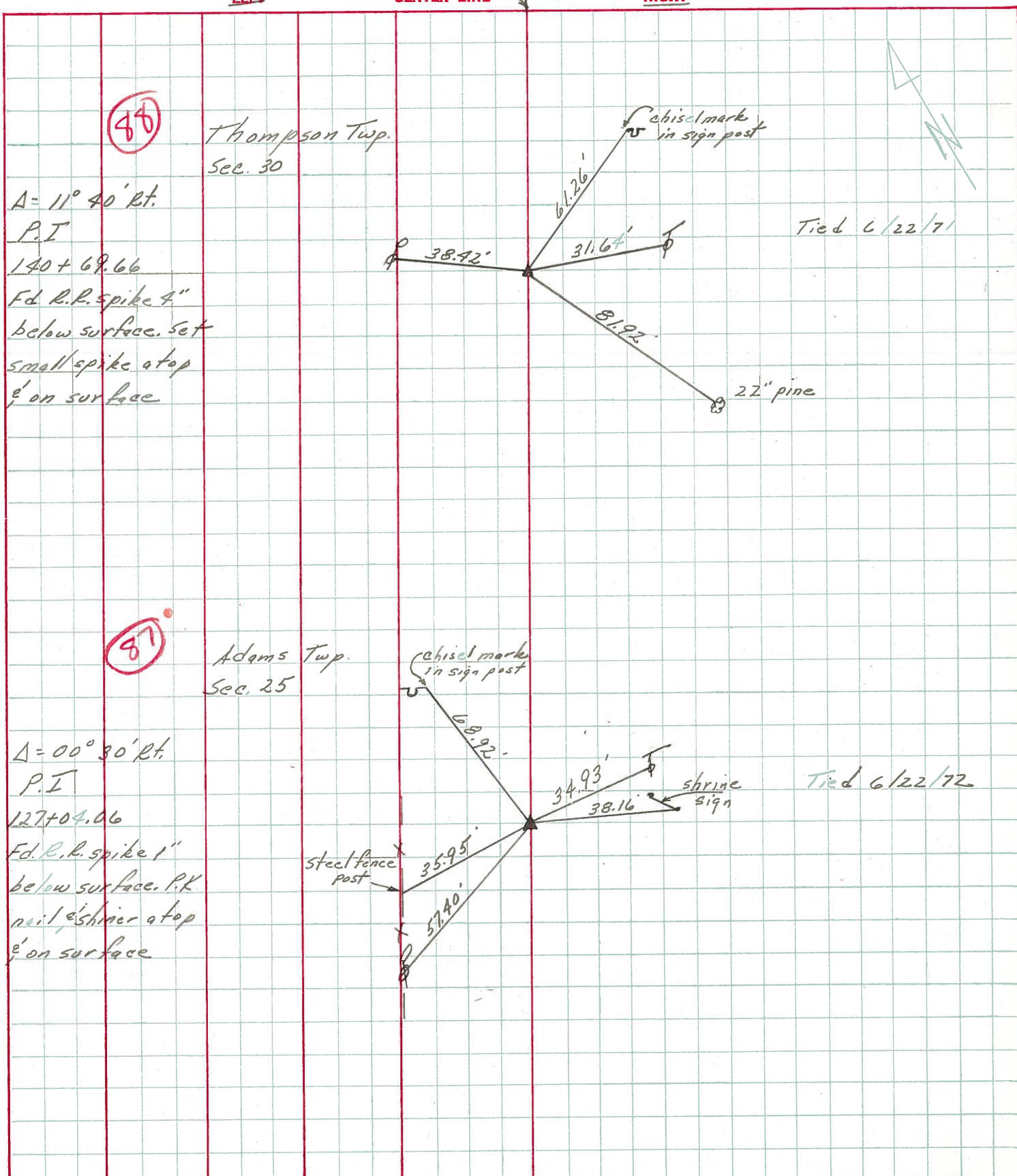
$\Delta = 00^\circ 30' \text{ Rt.}$   
P.I  
127 + 04.06  
Fd. R.R. spike 1"  
below surface. P.K  
nail, & shiner atop  
& on surface



Tied 6/22/72

PERSONNEL	TITLE	PERSONNEL	TITLE	COUNTY	DATE
Ash				Seneca	11/20/72
Cronin				S. R. #18 (S.H. #267)	WEATHER cloudy
Ripple				SEC. H	TEMP. 37°
Anderson					

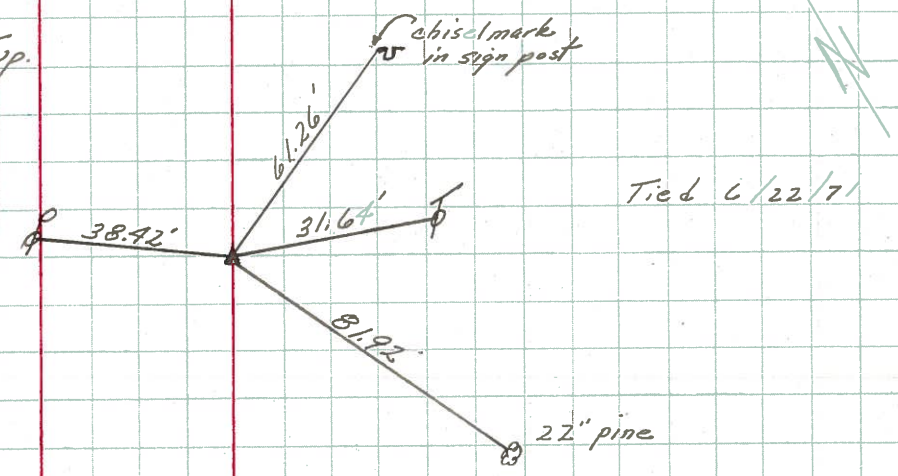
DESCRIPTION Ties for Control Points - Republic to Sandusky Co. Line JOB NO. \_\_\_\_\_



86

Thompson Twp.  
Sec. 30

$\Delta = 11^\circ 40' \text{ Rt.}$   
 P.I.  
 140 + 69.66  
 Fd. R.R. spike 4"  
 below surface. Set  
 small spike atop  
 & on surface

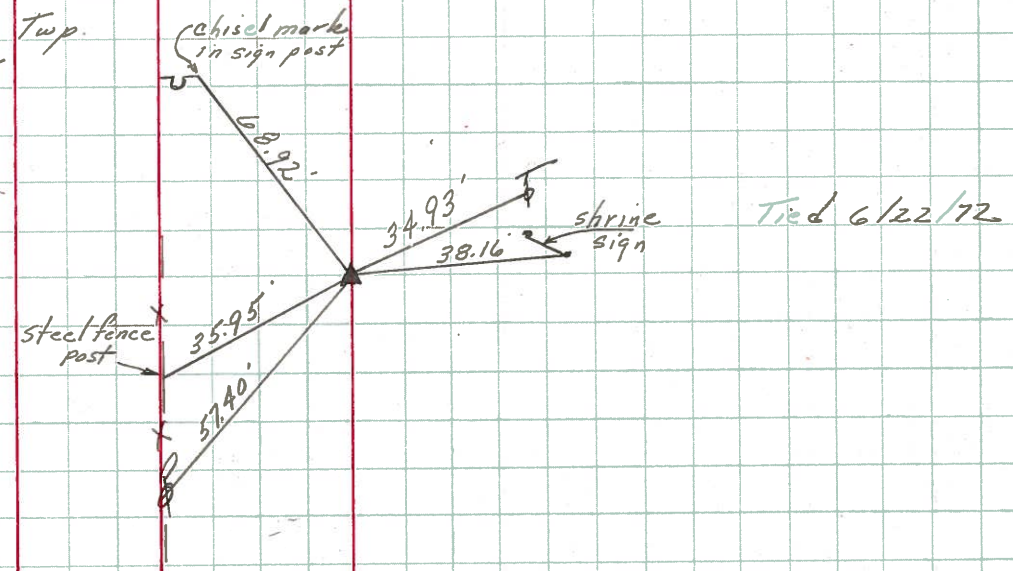


Tied 6/22/72

87

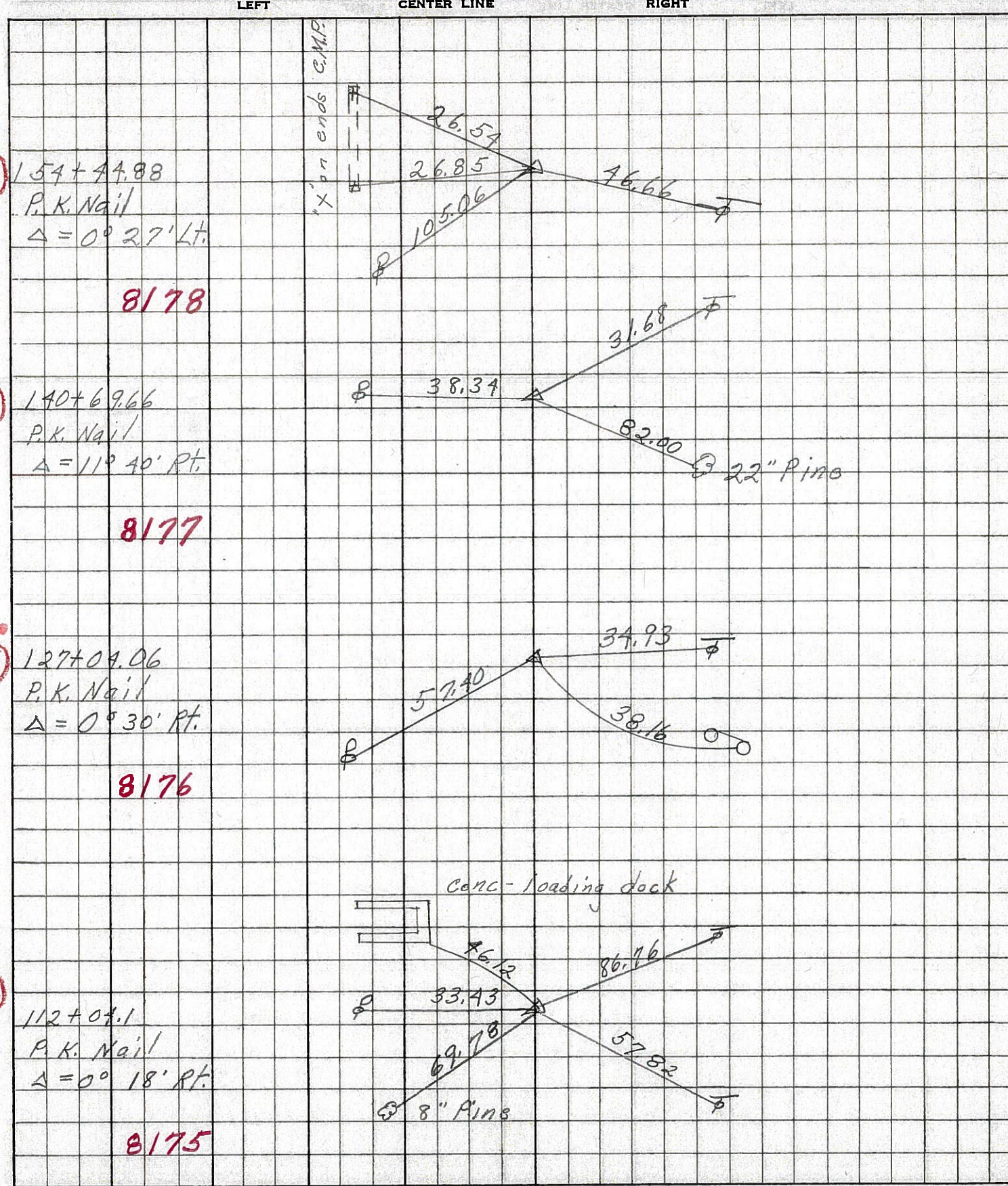
Adams Twp.  
Sec. 25

$\Delta = 00^\circ 30' \text{ Rt.}$   
 P.I.  
 127 + 04.06  
 Fd. R.R. spike 1"  
 below surface. P.K.  
 nail & shiner atop  
 & on surface



Tied 6/22/72

PERSONNEL	TITLE	PERSONNEL	TITLE	COUNTY	Seneca	DATE	11-13-68
Schneider		Potts		S. R.	18	WEATHER	Cold
Mosser				SEC	Republic to Sen. Co. line	TEMP.	25°
Barbour				DESCRIPTION	Ties for Control Points		
Redding						JOB NO.	



89

88

87

86

8178

8177

8176

8175