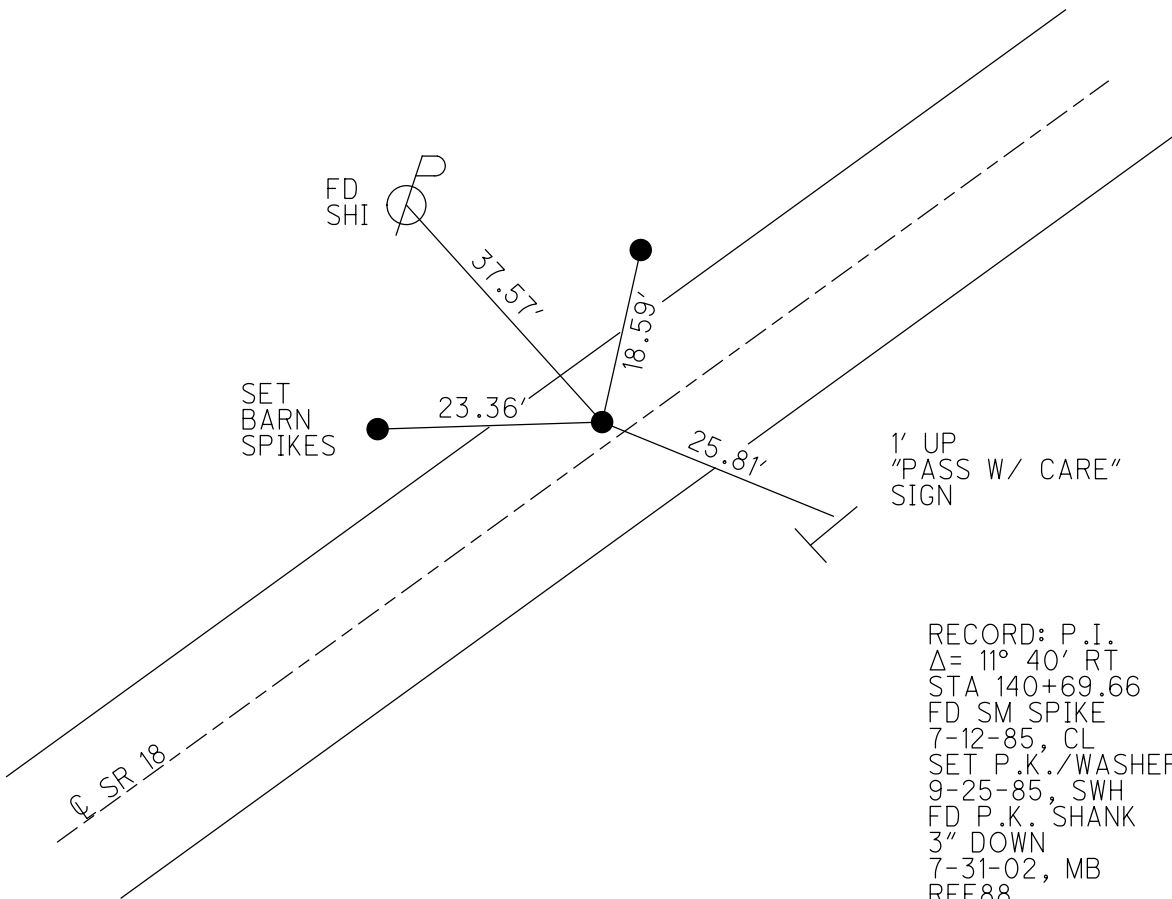
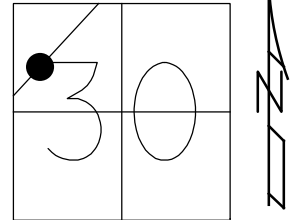


O.D.O.T. DISTRICT 2 SURVEY OFFICE (USE ONLY)

PERSONNEL _____ REFERENCE NO. 88 SHEET 21 OF 28
 NOTES RHOADES DATE 5-24-18 ROUTE SR 18
 H.C. O'DONNELL WEATHER SUNNY COUNTY SENECA
 R.C. TRENKA TEMP. 78° TOWNSHIP THOMPSON
 SECTION 30
 DWG BY JAMES PID 101281 T 3 N R 16 E

TYPE MONUMENT P.K. SHANK
~~ON SURFACE~~ - BELOW 3"
 OFFSET ϕ PAVEMENT 4.5' LT : ~~RT~~
5.3' TO LT EDGE PAVEMENT
 STATION: 1510+11.37

HORZ.DATUM: NAD83 2011 GEOID: NAVD88 2012A
 GRID: NORTHING: 556422.924 EASTING: 1843097.228



RECORD: P.I.
 $\Delta = 11^\circ 40'$ RT
 STA 140+69.66
 FD SM SPIKE
 7-12-85, CL
 SET P.K./WASHER
 9-25-85, SWH
 FD P.K. SHANK
 3" DOWN
 7-31-02, MB
 REF88
 3-2-17, JFO
 5-24-18, JFO
 SET MAG/WASHER
 1-14-19, JFO

O.D.O.T. DISTRICT 2 SURVEY OFFICE

PERSONNEL _____

REFERENCE NO. 88

SHEET _____ OF _____

NOTES Hoffman

H.C. LOEHRKE

R.C. BACHMISEL

DATE 7-12-85

WEATHER CLEAR

TEMP. 80°

ROUTE 18

COUNTY SENeca

TOWNSHIP Thompson

SECTION 30

T 3 N R 16 E

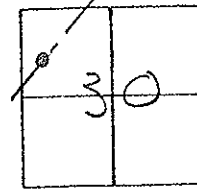
TYPE MONUMENT SMALL SPIKE Set P.K./WASHER 9-25-85 SWM

ON SURFACE - ~~BELOW~~ YES

LEFT - ~~PAV'T.~~ - RIGHT 4.5'

5.3' TO LT. EDGE PAVEMENT

S.L.M. 1514 + 41

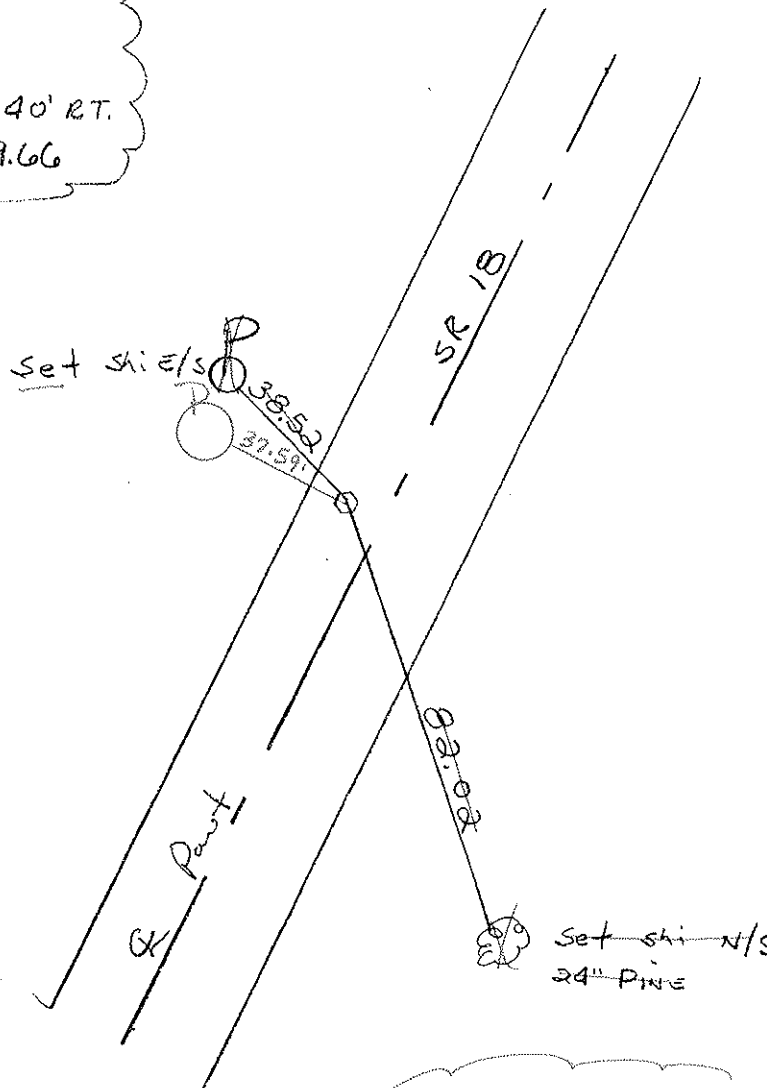


RECORD:

P.I.

$\Delta = 11^\circ - 40' \text{ RT.}$

140 + 69.66



Fd Shank of Sm RR Spk
 3" down
 7-31-02
 MB

Preventive Maintenance
 Chip & Seal 2002
 Existing Point Uncovered
 Date 12-06-02

O.D.O.T. DISTRICT 2 SURVEY OFFICE

PERSONNEL

REFERENCE NO. 88

SHEET OF

NOTES Hoffman

H.C. LOEHKE

R.C. BARNHISEL

DATE 7-12-85

WEATHER Clear

TEMP. 80°

ROUTE 18

COUNTY Seneca

TOWNSHIP Thompson

SECTION 30

T 3 N R 16 E

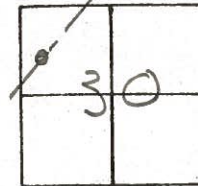
TYPE MONUMENT SMALL SPIKE Set P.K. / WASHER

ON SURFACE - BELOW YES 9-25-85 SWA

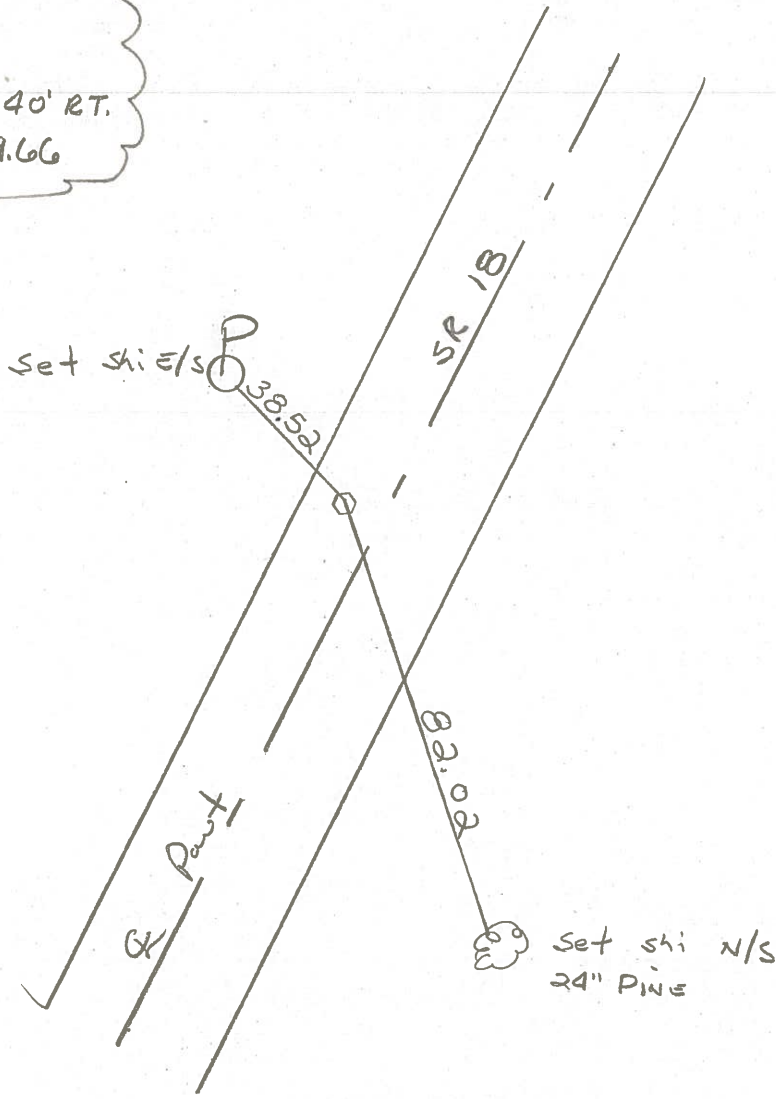
LEFT - PAV'T. - RIGHT 4.5'

5.3' TO LT. EDGE PAVEMENT

S.L.M. 1514 + 41



RECORD:
P.I.
 $\Delta = 11^\circ - 40' RT.$
140 + 69.66



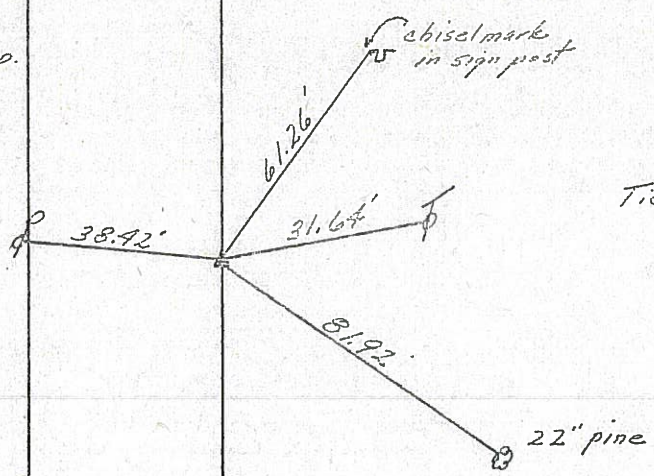
PERSONNEL	TITLE	PERSONNEL	TITLE	COUNTY	DATE
Ash				Seneca	11/20/72
Cronin				S. R. # 18 (S.H. 267)	WEATHER cloudy
Ripple				SEC. H	TEMP. 37°
Anderson					

DESCRIPTION *Ties for Control Points - Republic to Sandusky Co. Line* JOB NO.

88

$\Delta = 11^\circ 40' \text{ Rt.}$
 P.I
 140 + 69.66
 Fd. R.R. spike 4"
 below surface. Set
 small spike atop
 & on surface

Thompson Twp.
 Sec. 30

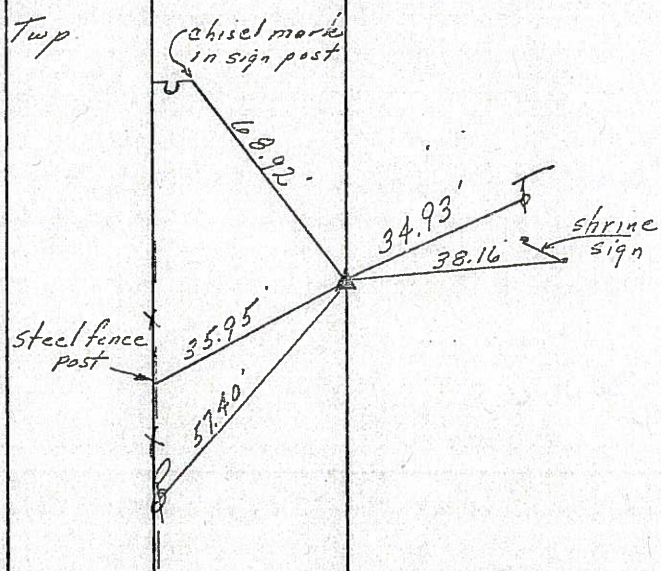


Tied 6/22/71

87

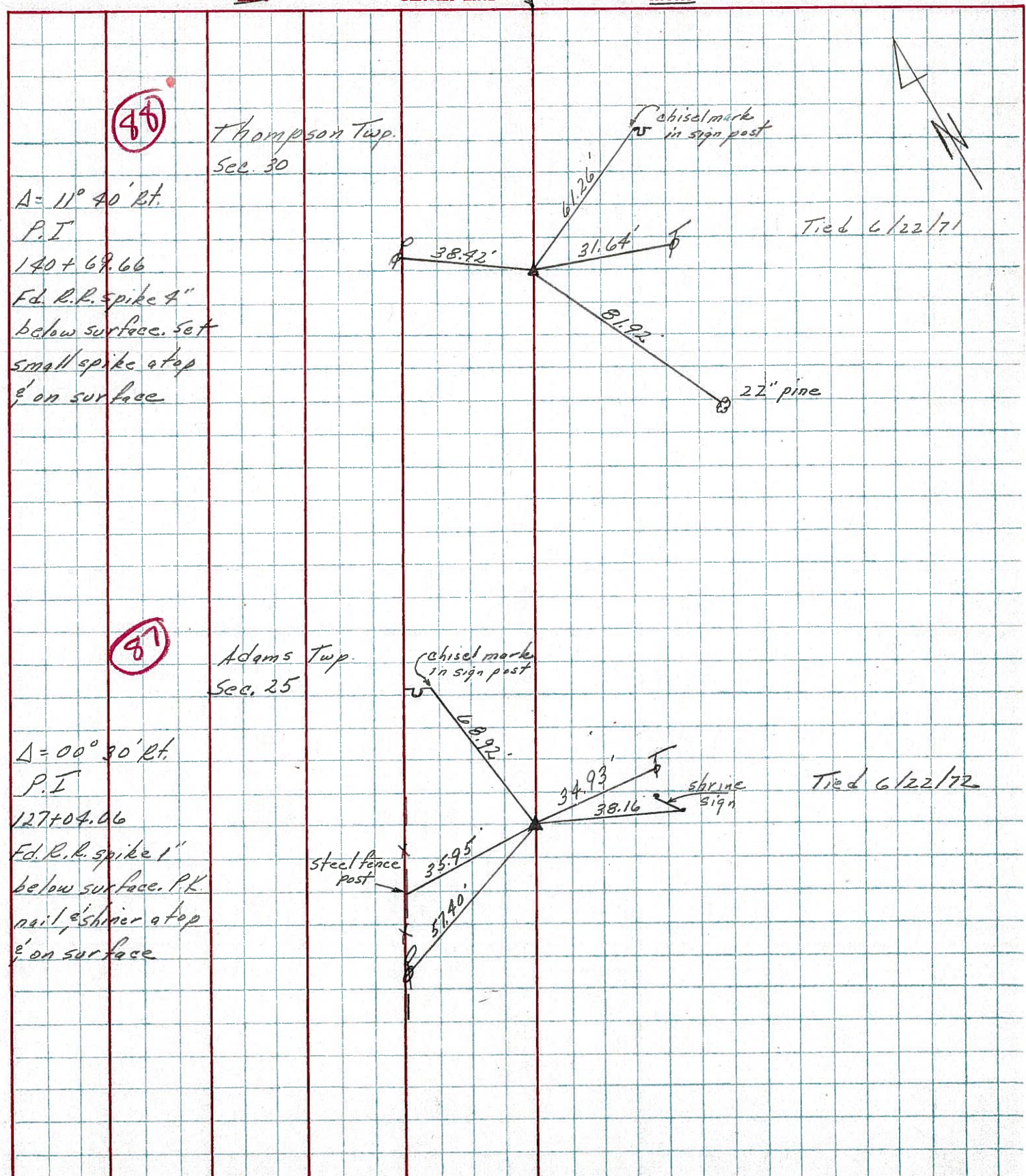
$\Delta = 00^\circ 30' \text{ Rt.}$
 P.I
 127 + 04.06
 Fd. R.R. spike 1"
 below surface. P.K
 nail & shrine atop
 & on surface

Adams Twp.
 Sec. 25



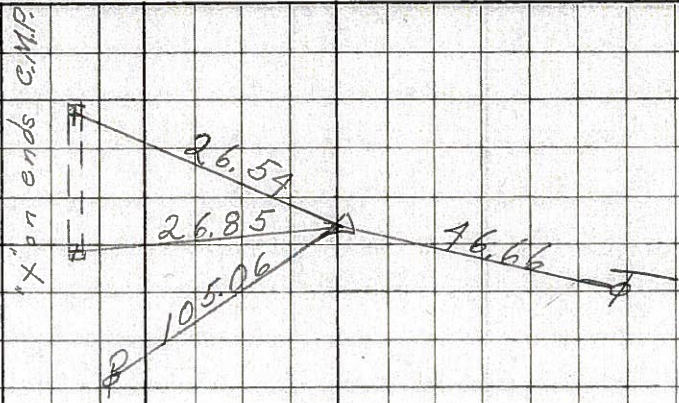
Tied 6/22/72

PERSONNEL	TITLE	PERSONNEL	TITLE	COUNTY	Seneca	DATE	11/20/72
Ash				S. R.	# 18 (S.H. # 267)	WEATHER	cloudy
Cronin				SEC.	H	TEMP.	37°
Ripple				DESCRIPTION <u>Ties for Control Points - Republic to Sandusky Co. Line</u>			
Anderson				JOB NO.			



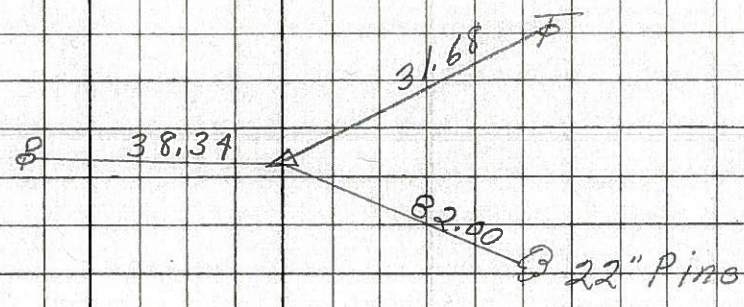
PERSONNEL	TITLE	PERSONNEL	TITLE	COUNTY	DATE
Schneider		Potts		Seneca	11-13-68
Mosser				S. R. 18	WEATHER cold
Barbour				SEC Republic to Sen. G. Line	TEMP. 25°
Redding					
DESCRIPTION	Ties for Control Points			JOB NO.	
	LEFT	CENTER LINE	RIGHT		

89 157+44.88
P.K. Nail
 $\Delta = 0^\circ 27' Lt.$



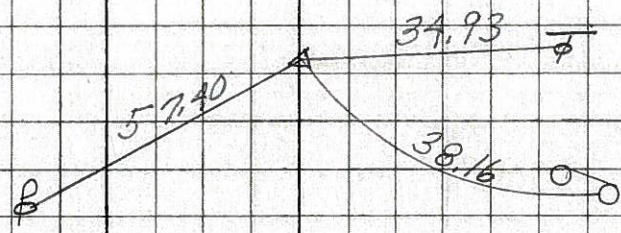
8178

88 140+69.66
P.K. Nail
 $\Delta = 11^\circ 40' Rt.$



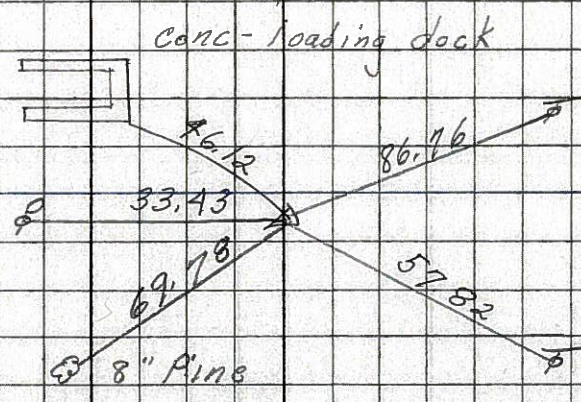
8177

87 127+04.06
P.K. Nail
 $\Delta = 0^\circ 30' Rt.$



8176

86 112+04.1
P.K. Nail
 $\Delta = 0^\circ 18' Rt.$



8175